

2024 Traffic Engineering Report

Year 2025 Toll Bridge Traffic Volume and Revenue Projection

CONTRACT NO. C-761A TRAFFIC ENGINEERING CONSULTANT



Submitted To:

Delaware River Joint Toll Bridge Commission
Administration Building
1199 Woodside Road, Yardley, PA 19067-1334

Pennoni Project No. DRJTX21004
February 18, 2025

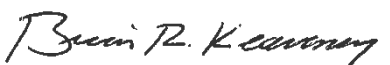

Brian Keaveney, PE
PENNA. REG. P.E. NO. 053079



TABLE OF CONTENTS

Executive Summary	1
Introduction	2
Historical Traffic Volumes	4
Current Toll Rates	6
Comparison of 2024 Actual vs Projected Toll Volumes	7
2025 Projected Traffic Volumes	9
Historical Volumes	9
Snow Adjustments.....	10
Major Developments.....	10
Roadway Construction Projects.....	10
Projected Volumes	11
2025 Toll Revenue Projections	12

LIST OF TABLES

Table 1: Bridges Owned and Operated by the Delaware River Joint Toll Bridge Commission	2
Table 2: Current Toll Structure Per Vehicle Type.....	6
Table 3: 2025 Toll Traffic Volume Projections	11
Table 4: 2025 Toll Revenue Forecasts	13
Table 5: Volume Comparison – 2024 to 2025.....	14
Table 6: Revenue Comparison – 2024 to 2025	14
Table 7: Actual Revenue and Expenditures for 2024.....	15
Table 8: Projected Revenue and Expenditures for 2025	16

LIST OF FIGURES

Figure 1: DRJTBC Bridge Locations
Figure 2: 2024 Volume by Class
Figure 3: Total Yearly DRJTBC Westbound Toll Bridge Volumes (2003-2024)
Figure 4: Total Yearly DRJTBC Westbound Toll Bridge Truck Volumes (2003-2024)
Figure 5: 2024 Assessed Tolls by Class
Figure 6: 2024 Forecasted and Actual Toll Volume
Figure 7: 2024 Forecasted and Actual Assessed Tolls
Figure 8: Historical Westbound Toll Bridge Volumes By Bridge (2019-2024)
Figure 9: Monthly Historical and Projected Revenues (2019-2024)

Executive Summary

The Delaware River Joint Toll Bridge Commission (Commission) owns and operates a total of twenty (20) bridges over the Delaware River within roughly 140 miles extending from the Philadelphia-Bucks County line north to the New Jersey/New York state border. Pennoni Associates Inc. (Pennoni) has been retained by the Commission to develop traffic volume and revenue forecasts for eight (8) toll bridges under its jurisdiction. The traffic and revenue forecasts are provided to assist the Commission in determining if the projected 2025 revenues satisfy the conditions of the Current Bond Indenture, which requires the following under Section 501 (a):

Section 501(a) of the Commission’s Bond Indenture states “The Commission covenants that at all times it will establish and maintain a schedule of tolls for vehicular traffic over the system, and will collect tolls, so that the Net Revenues in each fiscal year will at all times be at least sufficient to provide funds in an amount not less than (1) the greater of: (i) one hundred thirty percent (130%) of the Annual Debt Service for such fiscal year on account of all Applicable Long-Term Indebtedness then outstanding under the provisions of this Indenture, or (ii) one hundred percent (100%) of the Maximum Annual Debt Service on all Applicable Long-Term Indebtedness, plus (A) the amount of required transfers from the Revenue Fund to the credit of the Reserve Maintenance Fund pursuant to the Annual Capital Budget, and (B) an amount sufficient to restore any deficiency in the Debt Service Reserve Fund within an eighteen (18) month period; plus (2) the amount of any Short-Term Indebtedness outstanding pursuant to Section 703(a)(2); plus (3) the amount of Net Revenues in excess of the sum of the amounts set forth in clauses (1) and (2), together with Other Revenues pledged to the payment of Subordinated Indebtedness, shall be sufficient to pay the Annual Debt Service for any Subordinated Indebtedness.”

In December 2020, the Commission adopted a Financial Resilience Policy which established a “Target Debt Coverage Ratio” of 2.0 and calls for an assessment of the need for a toll adjustment if the Debt Coverage Ratio is projected to fall below 1.75.

The past few years have seen an unprecedented number of changes to both toll bridge traffic volume and toll bridge traffic revenues. The 2020 Covid-19 pandemic led to the greatest single event change in toll volumes and revenues, with a 24% reduction in toll volumes and a 9.4% reduction in toll revenue across the eight (8) toll bridges in 2020 alone. In addition to the Covid-19 pandemic, several other local and global events have contributed to variation in traffic patterns over the past five years including: the introduction of Toll by Plate, toll rate changes, oil price fluctuations, the rise and decline of work-from-home, interruptions in supply chains, the 2024 collapse of the Francis Scott Key Bridge, and the 2023 collapse of the Philadelphia I-95 bridge at Cottman Avenue.

The 2025 base volumes, by month for each vehicle class, were forecasted at each bridge based on an evaluation of the post-pandemic monthly toll volumes. A seasonalized forecasting model was developed based on historical data trends. This model was based on extrapolating primarily January 2022 to December 2024 toll volumes, weighted towards more recent values, which produced forecasted 2025 volumes.

The forecasted toll volume and assessed tolls each of the eight (8) toll bridges are summarized in **Table ES-1**.

Table ES-1: 2025 Toll Volume and Assessed Toll Forecasts

Bridge	2025 Toll Volume Forecast	2025 Assessed Toll Forecast
Trenton-Morrisville	8,643,151	\$28,632,029.66
Scudder Falls	8,423,459	\$18,988,711.70
New Hope-Lambertville	1,754,496	\$4,853,839.80
Interstate 78	11,297,639	\$84,071,563.71
Easton-Phillipsburg	5,419,893	\$15,547,103.50
Portland-Columbia	1,328,965	\$4,492,835.10
Delaware Water Gap (I-80)	9,995,575	\$48,774,185.39
Milford-Montague	1,223,552	\$2,586,669.34
Total	48,086,730	\$207,946,938.20

The sum of year 2025 projected assessed bridge tolls are **\$207,946,938.20**. The projected Net Revenue is **\$102,653,192.52** and the Annual Debt Service is **\$48,594,469.00**. Comparing the projected Net Revenue to the Annual Debt Service, the projected Net Revenue is 211% of the Annual Debt Service (**Debt Service Coverage Ratio of 2.11**). The requirement that the Net Revenue for the preceding fiscal year be greater than 130% of the Annual Debt Service is met. The Commission’s resolution to maintain a minimum Debt Service Coverage Ratio of 2.0 is also met.

Introduction

Pennoni has been retained by the Commission to develop traffic volume and revenue forecasts for eight (8) toll bridges under its jurisdiction. The traffic and revenue forecasts are provided to assist the Commission in determining if the projected 2025 revenues will be enough to satisfy the conditions of Section 501 (a) of the Current Bond Indenture.

The Commission owns and operates a total of twenty (20) bridges over the Delaware River within roughly 140 miles extending from the Philadelphia-Bucks County line north to the New Jersey/New York state border. The eight (8) toll bridges, ten (10) toll-supported vehicular bridges and two (2) toll-supported pedestrian bridges under the jurisdiction of the Commission are listed below from south to north.

Table 1: Bridges Owned and Operated by the Delaware River Joint Toll Bridge Commission

TOLL BRIDGES	TOLL-SUPPORTED BRIDGES
Southern Region	
Trenton-Morrisville (U.S. Route 1)	Lower Trenton
Scudder Falls (Interstate 295)	Calhoun Street
New Hope-Lambertville (U.S. Route 202)	Washington Crossing
	New Hope-Lambertville (Route 179)
	Centre Bridge-Stockton
	Lumberville–Raven Rock (Pedestrian Only)
Central Region	
Interstate 78	Uhlerstown-Frenchtown
Easton-Phillipsburg (U.S. Route 22)	Upper Black Eddy-Milford
	Riegelsville
	Northampton Street
	Riverton-Belvidere
Northern Region	
Portland-Columbia	Portland-Columbia (Pedestrian Only)
Delaware Water Gap (Interstate 80)	
Milford-Montague	

The locations of the Commission bridges are illustrated in **Figure 1**.

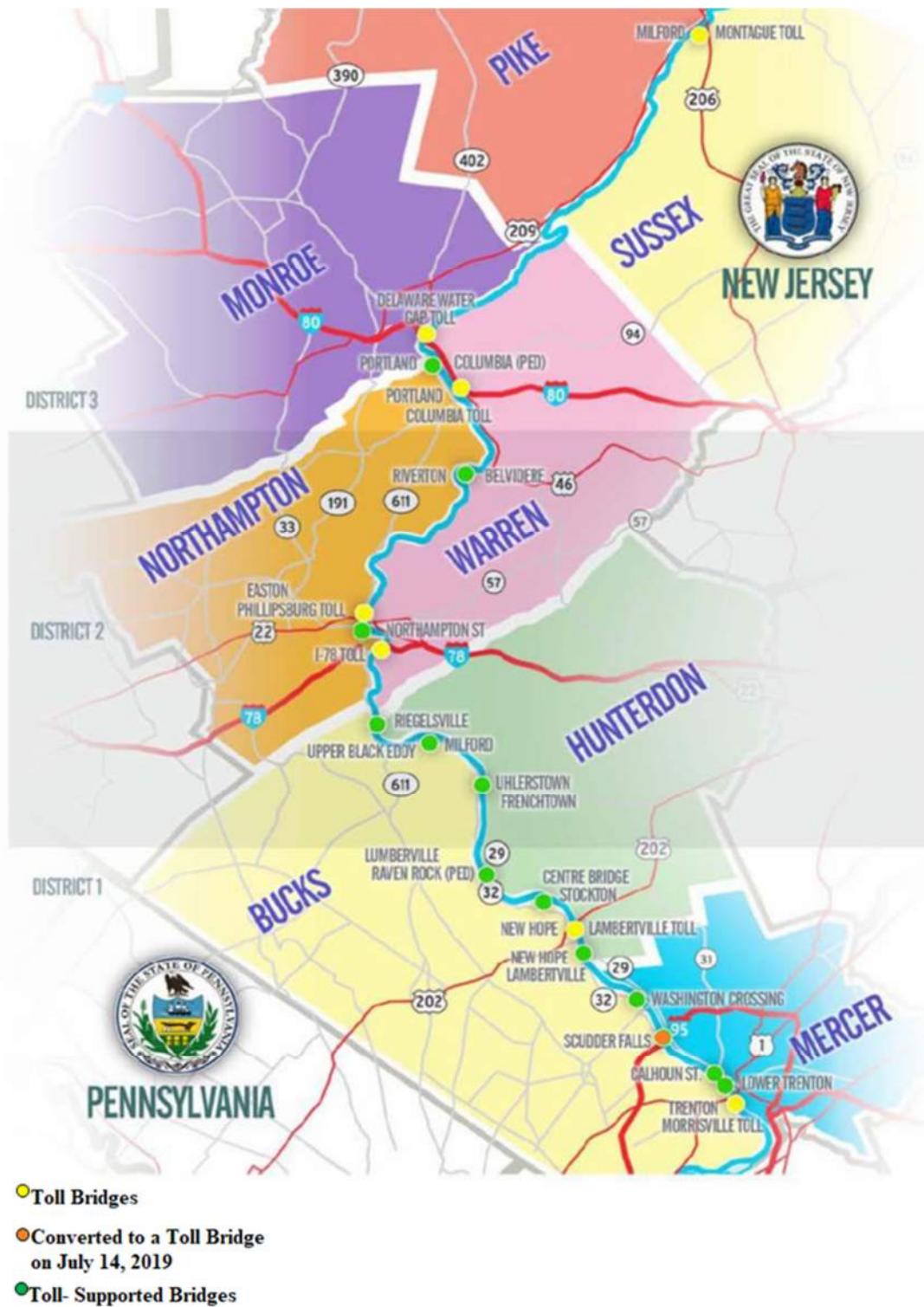


Figure 1: DRJTBC Bridge Locations

Historical Traffic Volumes

The Commission provided historical traffic volumes for the ten (10) toll-supported bridges and the eight (8) toll bridges carrying vehicular traffic. Scudder Falls Bridge was a toll-supported bridge until July 14, 2019, at which time it was converted to a toll bridge.

Recorded traffic volumes crossing the toll-supported bridges (both directions) are summarized in **Table A-1** within **Appendix A**. **Tables A-2 through A-23** summarize toll-supported bridge volumes (both directions) by year and month. Where volume data was not available, traffic volumes were estimated and are shown in red. All toll-supported bridges except for the Upper Black Eddy-Milford Bridge have weight restrictions prohibiting large trucks.

The Lower Trenton, Calhoun Street and Northampton Street Toll-supported Bridges carried between 6.2 and 6.5 million vehicles in 2024. The New Hope-Lambertville Bridge carried 2.2 million vehicles in 2024, which was down approximately 2 million vehicles due to the detour of eastbound traffic associated with the ongoing bridge rehabilitation. The remaining toll-supported bridges generally carried from 1.1 to 2.4 million vehicles in 2024.

At the toll-supported bridges, there are typically fluctuations in volumes from year to year. In a typical year, the overall volume on toll-supported bridges can vary up or down by up to 2%, with individual bridges experiencing even larger fluctuations in traffic. In 2020, the combined traffic on the toll supported bridges fell approximately 4.5 million vehicles (-13.6%) as a result of the Covid-19 Pandemic. In 2021, combined traffic on the toll supported bridges increased 3.28 million vehicles (+11.6%) over 2020. In 2022 and 2023, the traffic stabilized with the overall volume on toll-supported bridges returning to the historical pattern and varied by less than 2%. In 2024, the combined traffic on the toll supported bridges decreased by approximately 202,000 vehicles (-0.64%) which was within the normal range of variation based on historical data.

Historical recorded traffic volumes for the eight toll bridges (westbound direction) are summarized by vehicular class in **Tables A-24 through A-45** within **Appendix A**.

Before the Covid-19 pandemic, between 2003 and 2019, traffic volumes on the seven (7) legacy toll bridges increased from 34,007,789 in 2003 to 41,008,029 in 2019. This represents a combined average growth rate (CAGR) of 1.2% per year over those 16 years. Passenger cars represented approximately 85% of the overall traffic volume and increased from 29,105,960 in 2003 to 35,004,774 in 2019, a CAGR of 1.2% per year. Trucks increased from 4,901,829 in 2003 to 6,003,255 in 2019, a CAGR of 1.3% per year.

In 2020, despite a full year of Scudder Falls Bridge being a toll bridge, there was an estimated 24% reduction in toll volumes and a 9.4% reduction in toll revenue across the eight (8) toll bridges due to the Covid-19 pandemic. In 2021, the toll bridge traffic volumes began to recover from the pandemic and increased significantly by 11.9%. In 2022, the recovery from the Covid-19 pandemic continued and toll bridge traffic volume increased approximately 4.4% from 42,884,142 in 2021 to 44,760,833 in 2022.

In 2023, the recovery from the Covid-19 pandemic stabilized. Toll bridge traffic volume increased approximately 3.0% from 44,760,520 in 2022 to 46,114,499 in 2023, marking the first year reaching the pre-pandemic 2019 toll volume of 44,991,153, which included only 170 days of toll volume from the Scudder Falls Bridge. From 2022 to 2023, the passenger car volume increased approximately 4.4% (+1,662,605) and the truck volume decreased approximately -4.4% (-308,626).

In 2024, the overall toll bridge traffic volume increased approximately 1.4% from 46,114,499 in 2023 to 46,763,591. The passenger car volume increased approximately 0.8% (+313,082) and the truck volume increased approximately 5.0% (+336,010).

The Interstate 78 Toll Bridge continued to carry the largest traffic volume (11.2 million toll paying westbound vehicles). The Trenton-Morrisville (US Route 1) and Delaware Water Gap (I-80) carried 8.2 and 9.7 million toll-paying (westbound) vehicles, respectively. Scudder Falls carried 8.0 million toll-paying (westbound) vehicles and Easton-Phillipsburg had 5.3 million toll-paying (westbound) vehicles. The remaining three (3) toll bridges each carried between 1.2 million and 1.7 million toll-paying (westbound) vehicles.

Passenger cars represent the largest percentage of vehicles crossing the toll bridges at approximately 84.94%. Five (5) axle tractor-trailers are the most common truck type, representing approximately 9.62% of vehicles crossing toll bridges during 2024. Two (2) axle trucks represent the next largest portion of trucks at approximately 3.02%.

The vehicle class breakdown is illustrated in **Figure 2**.

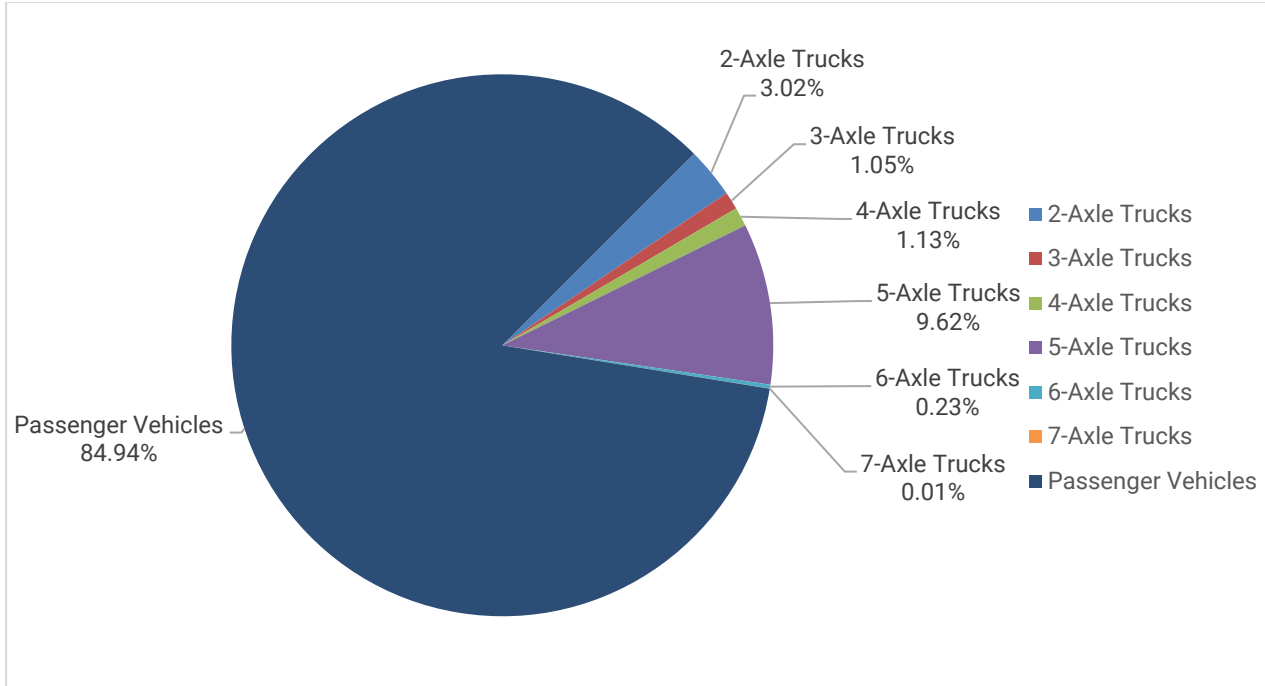


Figure 2: 2024 Volume by Class

Historical volumes on the toll bridges for the years 2003-2024 are graphically summarized according to total vehicles, passenger vehicles, and trucks on **Figure 3** and **Figure 4**.

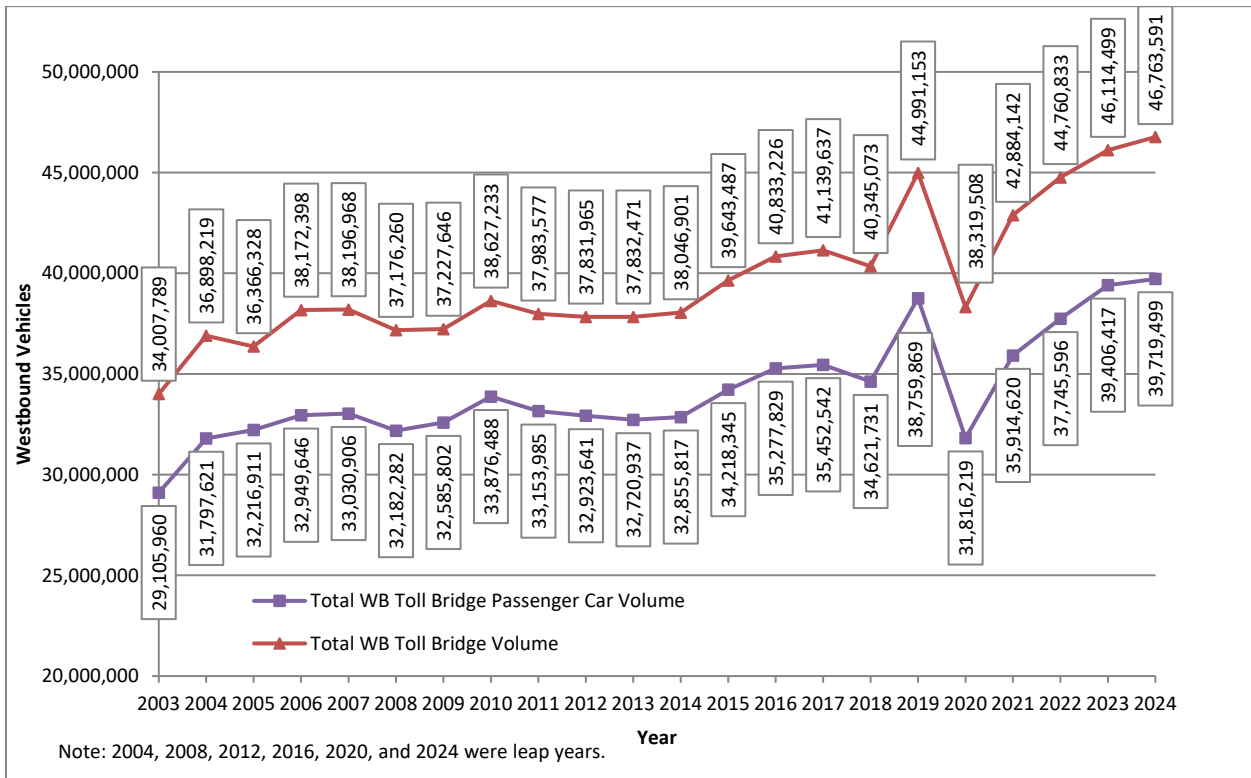


Figure 3: Total Yearly DRJTCB Westbound Toll Bridge Volumes (2003-2024)

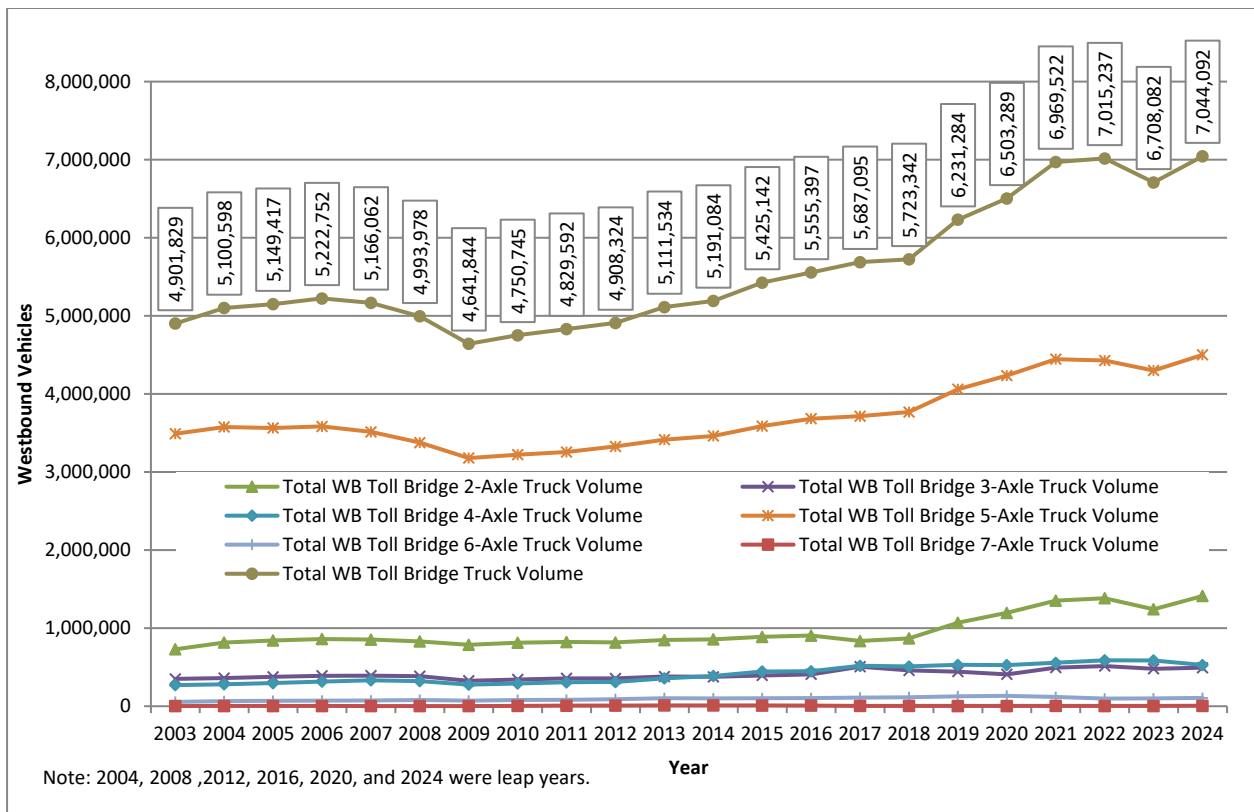


Figure 4: Total Yearly DRJTBC Westbound Toll Bridge Truck Volumes (2003-2024)

Current Toll Rates

On March 29, 2021, the Delaware River Joint Toll Bridge Commission approved a two-stage system-wide toll adjustment to address traffic and revenue declines caused by the Covid-19 health crisis, to fund future needed capital projects, and to comply with the Commission’s Financial Resilience Policy. On April 11, 2021, the first stage of the system wide adjustment was implemented with a new toll structure taking effect across all eight (8) toll bridges.

On January 7, 2024, the second stage of the system-wide toll adjustment was implemented with changes to the E-ZPass rates for both passenger vehicles and passenger vehicles with trailers, and the elimination of the E-ZPass commuter discount. The current toll structure is shown in **Table 2**.

Table 2: Current Toll Structure Per Vehicle Type

Vehicle Type	All Toll Bridges	
	Toll-By-Plate	E-ZPass
Passenger Vehicles	\$ 3.00	\$ 1.50
Passenger vehicle w/ Trailer	\$ 5.00	\$ 3.50
2-Axle Trucks	\$ 10.00	\$ 9.00
3-Axle Trucks	\$ 15.00	\$ 13.50
4-Axle Trucks	\$ 20.00	\$ 18.00
5-Axle Trucks	\$ 25.00	\$ 22.50
6-Axle Trucks	\$ 30.00	\$ 27.00
7-Axle Trucks	\$ 35.00	\$ 31.50

In addition to the implementation of a new toll structure, the Commission converted its entire network of toll bridges to cashless all-electronic toll (AET) collections as of January 2025. The transition began with a phased-in introduction of TOLL-BY-PLATE functionality at the Commission’s seven conventional E-ZPass/cash tolling points in January 2024. Scudder Falls Bridge has had AET since July 2019. On June 17th, 2024, the three (3) lowest-volume toll bridges (New Hope-Lambertville, Portland-Columbia, and Milford-Montague) ceased cash collections and became solely all-electronic E-ZPass and TOLL BY PLATE transactions. The remaining four bridges ceased cash collections on January 13, 2025.

In 2024, five (5) axle tractor-trailers provide the greatest source of assessed tolls at \$102.5 million, representing approximately 50.32% of total assessed tolls. Passenger cars are the next greatest source of assessed tolls at \$68.9 million, representing approximately 33.80% of total assessed tolls. Two (2) axle trucks, three (3) axle tractor-trailers, and four (4) axle tractor-trailers generate \$12.9 million (6.34%), \$6.7 million (3.31%), and \$9.6 million (4.73%) in total assessed tolls, respectively.

The assessed tolls breakdown for 2024 by vehicle class is illustrated in **Figure 5**.

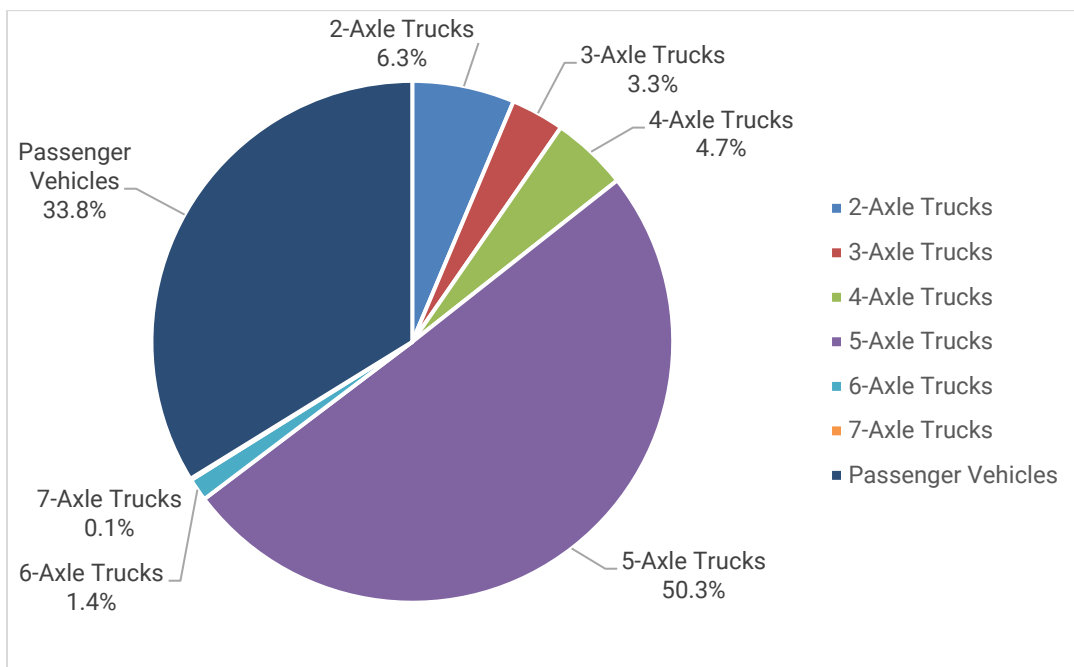


Figure 5: 2024 Assessed Tolls by Class

Comparison of 2024 Actual vs Projected Toll Volumes

The projected 2024 toll volumes were developed using seasonalized forecasting from actual post Covid-19 volumes and projected a total volume of 47,408,518 vehicles and total toll revenue of \$192,171,177.

The actual 2024 total volume was 46,763,591 vehicles, which was 644,927 (-1.36%) vehicles less than projected. The overall passenger car volume of 39,719,499 fell short of projections by 1,125,542 vehicles (-2.76%) and the overall truck volume of 7,044,092 vehicles exceeded the 2024 projections by 480,620 (6.82%).

The easing inflation pressure, increased consumer spending, and lowered federal interest rates have contributed to a period of stabilization and recovery in the trucking industry following a nationwide decline of 3-5% in freight volume in 2022 and 2023.

The actual 2024 total volume of 46,763,591 vehicles was an increase of 649,092 vehicles (1.41%) over the 2023 toll volumes. The overall passenger car volume of 39,719,500 was an increase of 313,083 vehicles (0.79%) and the overall truck volume of 7,044,091 vehicles was an increase of 336,009 (5.01 %) when compared to the 2023 volumes. Taking into account that 2024 was a leap year, average daily toll volumes increased 1,428 vehicles (1.13%) with daily passenger car traffic increasing 560 vehicles (0.52%) and daily truck traffic increasing 868 vehicles (4.72) % when compared to 2023.

With the introduction of TOLL-BY-PLATE on all toll bridges in 2024, except at the Scudder Falls Toll Bridge which already had TOLL-BY-PLATE, there is an associated increase in uncollectible tolls, referred to as “leakage”. Leakage can be caused by issues such as un-processable transactions due to poor license-plate images, good license plate images with incorrect or unrecoverable owner-of-record information, and limited regulations regarding the ability to collect from “out-of-jurisdiction” users, among other things.

TOLL-BY-PLATE was available alongside cash collection at all bridges until June 17, 2024 when the New Hope-Lambertville, Portland-Columbia, and Milford-Montague toll bridges ended cash collection. The remaining toll bridges ended cash collection on January 13, 2025. Based on available information for the Toll-By-Plate payment option and with cash collection still available at some bridges, a system-wide toll collection rate of 97% was anticipated. The 97% toll collection rate was utilized to project the 2024 toll revenue. The actual 2024 revenue is calculated utilizing a system wide collection rate of 95.6%, representing a leakage rate of 4.4% across the system.

The 2024 net toll revenue, with 4.4% leakage, is \$194,742,832.74, which is \$2,571,655.31 (1.34%) more than projected despite utilizing the higher leakage rate. The overall passenger car revenue of \$65,817,040.97 is \$2,876,017.77 (-4.19%) less than the projection and the overall truck revenue of \$128,925,791.77 exceeded projections by \$5,447,673.08 (4.41%).

A monthly comparison of overall traffic volume is illustrated in **Figure 6**. A monthly comparison of revenue is illustrated in **Figure 7**.

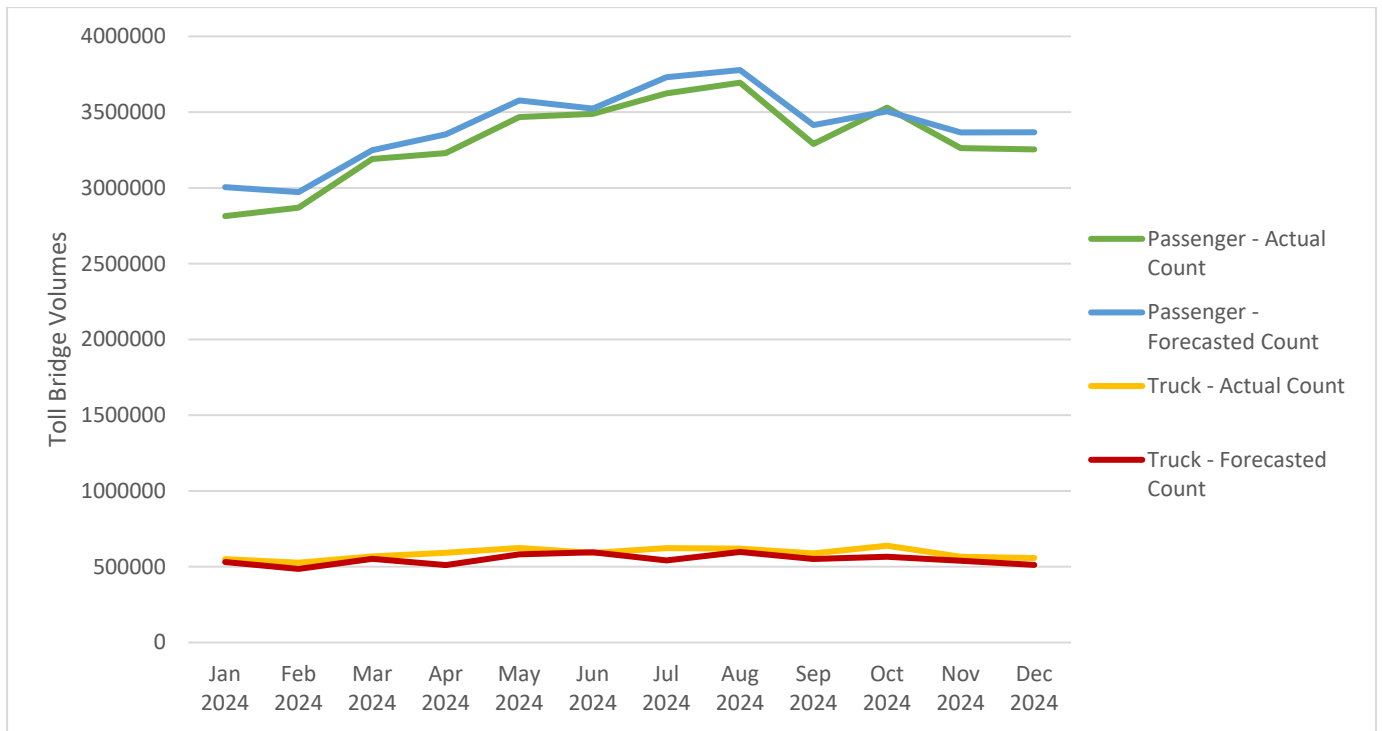


Figure 6: 2024 Forecasted and Actual Toll Volume

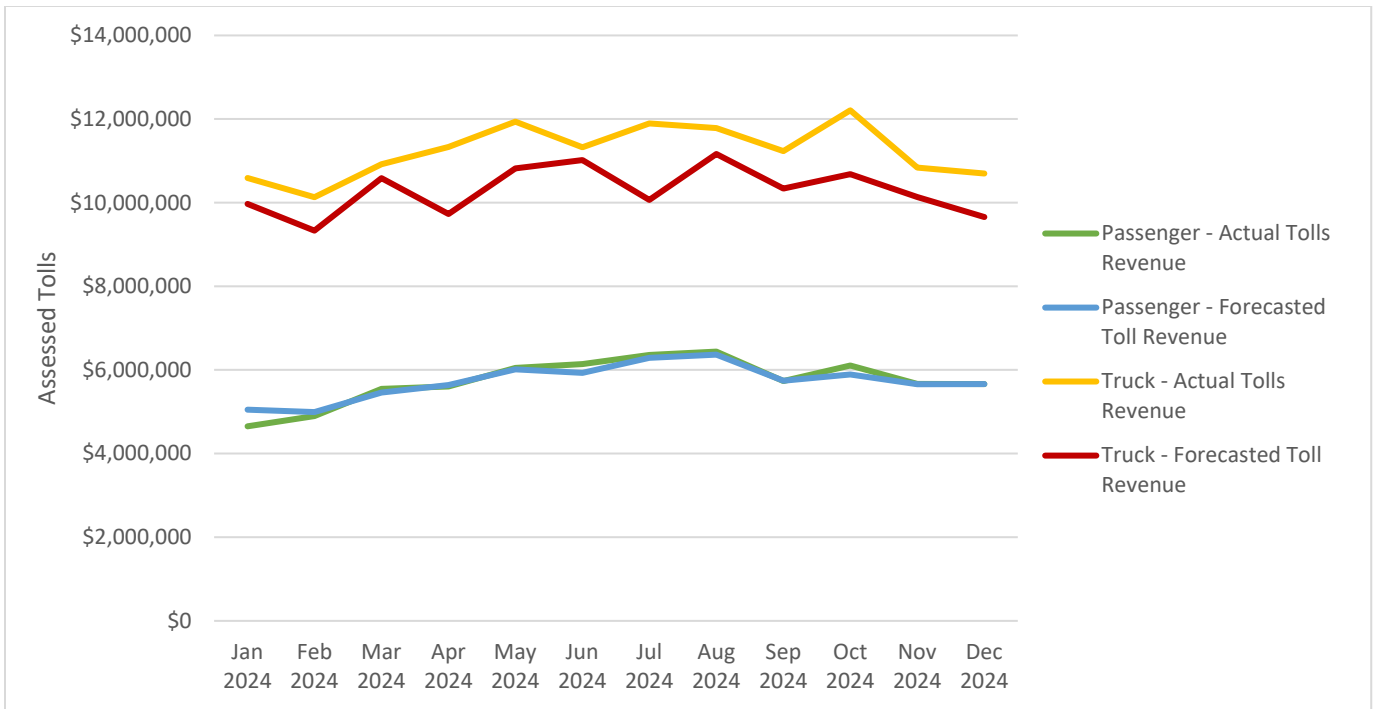


Figure 7: 2024 Forecasted and Actual Assessed Tolls

2025 Projected Traffic Volumes

Historical Volumes

Pennoni maintains a database of recorded toll volumes which dates to 2003. In previous iterations of the Toll Bridge Traffic Volume and Revenue Projection Report, projected traffic volumes would be developed based upon on the previous year-end volumes and the application of an annual background growth rate for each vehicle class at each bridge, and targeted adjustments to account for increases or decreases in toll volumes attributable to construction projects, snow events, and other events which may have diverted motorists from their regular route. Historical volumes from 2019 to 2024 are shown in **Figure 8**.

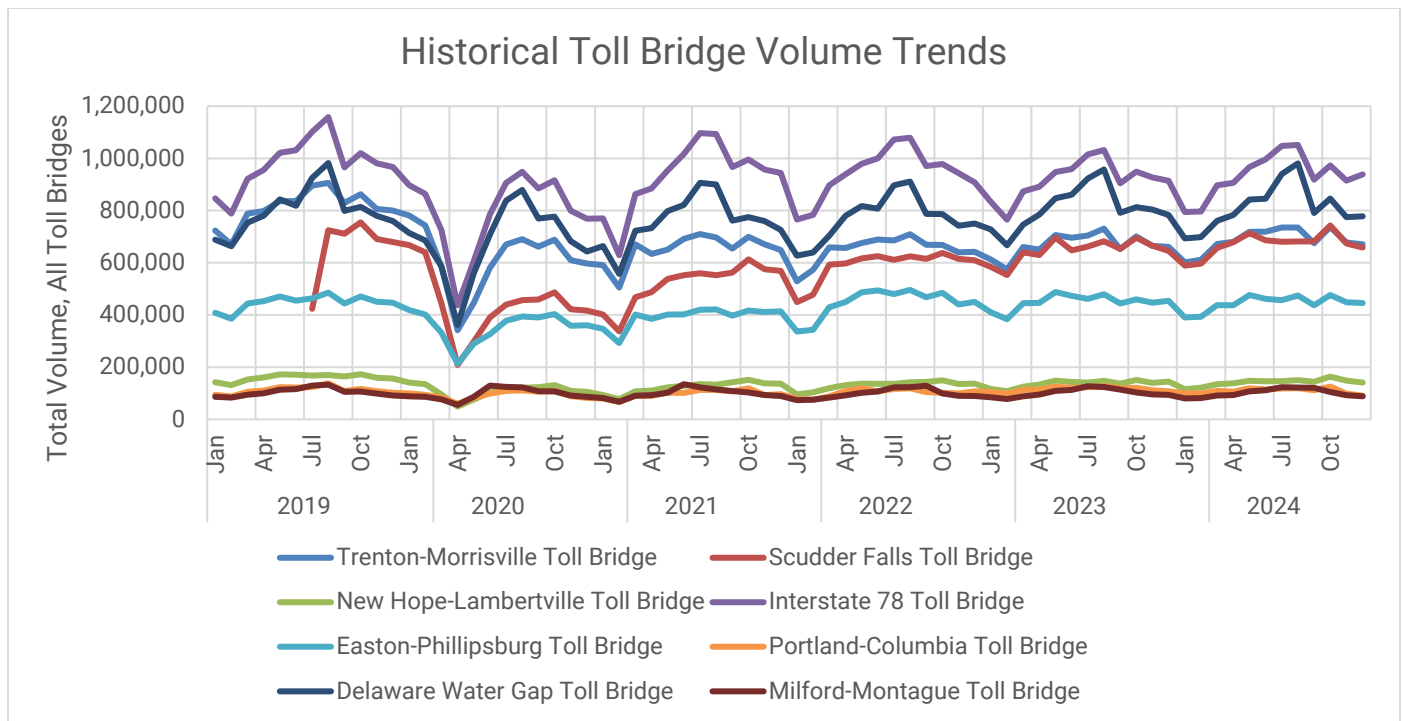


Figure 8: Historical Westbound Toll Bridge Volumes by Bridge (2019-2024)

Snow Adjustments

Although there were storm events in 2024, the number and severity of events were consistent with the average over recent years. The related impacts of the snow events on daily volumes and revenues at the toll bridges are not considered significant, in comparison to previous years, and do not merit the application of any targeted adjustments.

Major Developments

County planning/engineering offices for the eight (8) counties along the Delaware River within the study area (Bucks, Northampton, Monroe, and Pike counties in Pennsylvania and Mercer, Hunterdon, Sussex, and Warren counties in New Jersey) were contacted to request information regarding any large developments that could, upon completion, have a major effect on toll bridge volumes.

In Falls Township, Bucks County, Phase 3 of the Keystone Trade Center is currently under development, which is comprised of approximately 2,715,000 SF of industrial warehouse space. The impact of the warehouse has been applied to the forecasted 2025 toll volumes for the Trenton-Morrisville toll bridge. As a result, an additional 109,800 passenger vehicles and 59,740 trucks for Trenton-Morrisville toll bridge will be added to the 2025 forecasted toll volumes as an adjustment.

There are several large warehouse projects under consideration in Warren and Hunterdon Counties, but none that are anticipated to be completed in 2025.

Mercer County identified two (2) large residential developments that will be completed and fully occupied in 2025, which include 1,077-unit and 379-unit residential developments located in Hopewell Township. Both developments were partially occupied in 2024. The associated impact of the completion of these housing developments in Hopewell Township have been incorporated into the forecasted 2025 toll volumes for the Scudder Falls Bridge. As a result, an additional 52,608 passenger vehicles for Scudder Falls Bridge will be added to the 2025 forecasted toll volumes as an adjustment.

In addition, a 215,00 SF Warehouse in Hamilton Township was completed in late 2024 and is anticipated to be occupied in 2025. The impact of the warehouse has been applied to the forecasted 2025 toll volumes for the Trenton-Morrisville toll bridge. As a result, an additional 13,572 passenger vehicles and 4,496 trucks for Trenton-Morrisville Bridge are included in the 2025 forecasted toll volumes as an adjustment.

Roadway Construction Projects

Pennoni coordinated with the Commission and County planning/engineering offices to identify significant roadway construction projects near the bridges. In addition, the Pennsylvania Department of Transportation (PennDOT) Transportation Improvement Program (TIP) and New Jersey TIP were also reviewed.

PennDOT and NJDOT have various projects scheduled in the vicinity of toll bridges during the 2025 calendar year. None of the identified projects are anticipated to divert toll bridge traffic or anticipated to result in long term disruption in traffic flow and do not warrant the application of targeted adjustments.

In 2024, the Delaware River Joint Toll Bridge Commission began the rehabilitation of the New Hope-Lambertville Toll-Supported Bridge. The project allowed uninterrupted westbound vehicular travel and did not impact the westbound volumes or revenue at the adjacent Route 202 New Hope-Lambertville Toll Bridge. Therefore, no targeted adjustments were applied.

In 2025, the Delaware River Joint Toll Bridge Commission will continue the rehabilitation of the New Hope-Lambertville Toll-Supported Bridge. From January 10th to 23rd there was a full bridge closure resulting in a portion of the westbound traffic being diverted to the Route 202 New Hope-Lambertville Toll Bridge, which is located approximately 1 mile to the north. As a result, a targeted adjustment of 36,473 vehicles was applied to the Route 202 New Hope-Lambertville Toll Bridge.

In 2025, the Delaware River Joint Toll Bridge Commission will also begin the rehabilitation of the Uhlerstown-Frenchtown Toll-Supported Bridge. There is no indication that there will be a significant impact to westbound volumes or that revenue at the nearest toll bridges (Route 202 New Hope-Lambertville Toll Bridge approximately 12 miles south and the Interstate 78 Toll Bridge approximately 16 miles north) will be affected. Therefore, no targeted adjustments were applied.

Projected Volumes

Projections were developed for each vehicle class and bridge via a seasonalized weighted exponential forecasting model with post-pandemic volume data. Other forecasting methods/models were also tested, including various regression models over specific time periods, deseasonalizing post pandemic data, comparing pre-pandemic with post pandemic data, and other combinations of the previously mentioned. Overall, the chosen model significantly outperformed the other models across several metrics. As a result, all the growth rates are formed from a data-driven seasonalized weighted exponential of the post-pandemic volumes. This model differs from previous years by only relying on 2022 to 2024 volume data. While there is a greater chance of overfitting by relying more heavily on the past 3 years of volume data, the historical pre-pandemic volume data no longer matches current traffic trends closely enough to warrant inclusion in the final model. Statistical tests were run to determine the ideal month to consider post-pandemic, with early 2022 outperforming other months between 2021 and 2024.

The 2025 total toll volume projection of 48,086,730 represents a 2.83% increase over the 2024 volumes. Passenger vehicles are projected to increase 1,237,651 (3.12%) and trucks are projected to increase 85,488 (1.21%) over 2024 volumes.

Table 3 summarizes 2025 volume projections and adjustments by bridge.

Tables B-1 through B-8 in **Appendix B** summarize 2025 volume projections and adjustments by bridge and vehicle class.

Table 3: 2025 Toll Traffic Volume Projections

Region	Bridge	2025 Base Toll Volume	Development / Construction Adjustment	2025 Forecasted Toll Volume
Southern	Trenton-Morrisville	8,455,543	187,608	8,643,151
Southern	Scudder Falls	8,370,851	52,608	8,423,459
Southern	New Hope-Lambertville	1,718,023	36,473	1,754,496
Central	Interstate 78	11,297,639	0	11,297,639
Central	Easton-Phillipsburg	5,419,893	0	5,419,893
Northern	Portland-Columbia	1,328,965	0	1,328,965
Northern	Delaware Water Gap (I-80)	9,995,575	0	9,995,575
Northern	Milford-Montague	1,223,552	0	1,223,552
	Total	47,810,041	276,689	48,086,730

2025 Toll Revenue Projections

Projected tolls for the eight (8) toll bridges are developed from the forecasted volumes and average toll rates for each of the bridges. The average toll rates were developed specific to each vehicle class on each toll bridge using total toll revenue collected and total recorded toll volumes from January 2024 through December 2024.

The monthly historical and projected assessed tolls for 2019-2025 are illustrated in **Figure 9**.

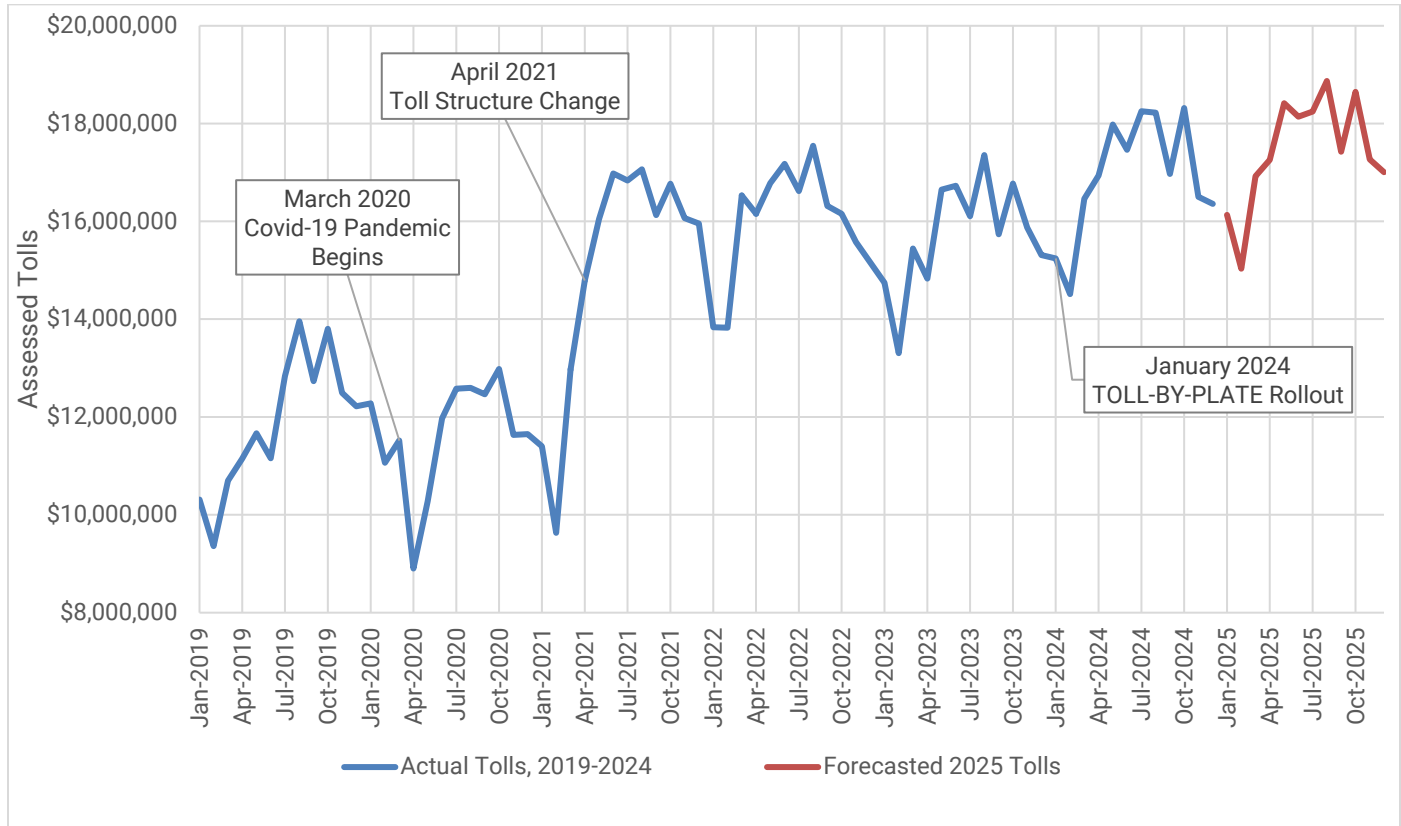


Figure 9: Monthly Historical and Projected Revenues (2019-2025)

With the introduction of TOLL-BY-PLATE and elimination of cash collection on all bridges as of January 13, 2025, the system wide toll collection rate for 2025 is anticipated to be 93%. This represents a 7% leakage rate across the system.

The projected toll forecasts, estimated uncollectable tolls, and net revenues are illustrated in **Table 4**.

The 2025 assessed toll projection of \$207,946,938.20 represents a 2.07% increase over the 2024 assessed tolls. Assessed passenger vehicle tolls are projected to increase by \$2,124,527.42 (3.09%) and assessed truck tolls are projected to increase by \$2,096,789.38 (1.55%) over 2024.

With a 7% leakage rate, the 2025 net toll revenue projection of \$193,390,652.52 represents a 0.69% reduction over the 2024 net toll revenue. Net toll revenue from passenger vehicles is projected to increase \$192,008.47 (0.29%) and net toll revenue from trucks is projected to decrease \$1,544,188.69 (-1.20%) compared to 2024.

Table 4: 2025 Toll Revenue Forecasts

Bridge	2025 Assessed Toll Forecast	7% Uncollectable Tolls	2025 Net Toll Revenue Forecast
Trenton-Morrisville	\$28,632,029.66	\$2,004,242.08	\$26,627,787.58
Scudder Falls	\$18,988,711.70	\$1,329,209.82	\$17,659,501.88
New Hope-Lambertville	\$4,853,839.80	\$339,768.79	\$4,514,071.01
Interstate 78	\$84,071,563.71	\$5,885,009.46	\$78,186,554.25
Easton-Phillipsburg	\$15,547,103.50	\$1,088,297.24	\$14,458,806.26
Portland-Columbia	\$4,492,835.10	\$314,498.46	\$4,178,336.64
Delaware Water Gap (I-80)	\$48,774,185.39	\$3,414,192.98	\$45,359,992.41
Milford-Montague	\$2,586,669.34	\$181,066.85	\$2,405,602.49
Total	\$207,946,938.20	\$14,556,285.68	\$193,390,652.52

Table 5 compares the 2024 toll volume for each bridge with the projected 2025 toll volume. As indicated, the overall toll traffic volumes are projected to increase by approximately 1,364,481 vehicles over 2024.

Table 6 compares the 2024 assessed tolls for each bridge with the projected 2025 assessed tolls. As indicated, the overall assessed tolls are projected to increase by approximately \$4,269,947.27 over the actual 2024 assessed tolls.

Table 7 is provided in response to Section 501(a)(1) of the Commission’s Bond Indenture and provides Total Revenue, Operating Expenses, Net Revenue, and Annual Debt Service for 2024. The actual calculated Debt Service Coverage Ratio for 2024 was 2.55. The requirement that the Net Revenue for the preceding fiscal year be greater than 130% of the Annual Debt Service is met. The Commission’s resolution to maintain a minimum Debt Service Coverage Ratio of 2.0 is also met.

Table 8 lists the projected revenues and expenditures for the year 2025. The sum of the year 2025 projected assessed tolls is \$207,946,938.20, the projected Net Revenue is \$102,653,192.52 and the Annual Debt Service is \$48,594,469.00. Comparing the projected Net Revenue to the Annual Debt Service, the projected Net Revenue is 211% of the Annual Debt Service (Debt Service Coverage Ratio of 2.11). The requirement that the Net Revenue for the fiscal year be greater than 130% of the Annual Debt Service is projected to be met. The Commission’s resolution to maintain a minimum Debt Service Coverage Ratio of 2.0 is also projected to be met.

Table 5: Volume Comparison – 2024 to 2025

Bridge	2024 Toll Volume	2025 Projected Volume	% Change in Toll Volume
Trenton-Morrisville	8,231,688	8,643,151	5.00%
Scudder Falls	8,039,032	8,423,459	4.78%
New Hope-Lambertville	1,697,155	1,754,496	3.38%
Interstate 78	11,199,188	11,297,639	0.88%
Easton-Phillipsburg	5,334,468	5,419,893	1.60%
Portland-Columbia	1,312,186	1,328,965	1.28%
Delaware Water Gap (I-80)	9,732,990	9,995,575	2.70%
Milford-Montague	1,216,884	1,223,552	0.55%
Total	46,763,591	48,086,730	2.83%

Table 6: Revenue Comparison – 2024 to 2025

Bridge	2024 Assessed Tolls	2025 Projected Assessed Tolls	% Change in Tolls
Trenton-Morrisville	\$26,955,818.25	\$28,632,029.66	6.22%
Scudder Falls	\$18,447,112.11	\$18,988,711.70	2.94%
New Hope-Lambertville	\$4,636,217.42	\$4,853,839.80	4.69%
Interstate 78	\$83,526,532.10	\$84,071,563.71	0.65%
Easton-Phillipsburg	\$15,044,672.24	\$15,547,103.50	3.34%
Portland-Columbia	\$4,444,624.39	\$4,492,835.10	1.08%
Delaware Water Gap (I-80)	\$48,099,622.50	\$48,774,185.39	1.40%
Milford-Montague	\$2,571,022.39	\$2,586,669.34	0.61%
Total	\$203,725,621.40	\$207,946,938.20	2.07%

Table 7: Actual Revenue and Expenditures for 2024

Region	Bridge	2024 Volume	2024 Revenue
Southern	Trenton-Morrisville	8,231,688	\$ 26,955,818.25
Southern	Scudder Falls	8,039,032	\$ 18,447,112.11
Southern	New Hope-Lambertville	1,697,155	\$ 4,636,217.42
Central	Interstate 78	11,199,188	\$ 83,526,532.10
Central	Easton-Phillipsburg	5,334,468	\$ 15,044,672.24
Northern	Portland-Columbia	1,312,186	\$ 4,444,624.39
Northern	Delaware Water Gap	9,732,990	\$ 48,099,622.50
Northern	Milford-Montague	1,216,884	\$ 2,571,022.39
	Total	46,763,591	\$ 203,725,621.40
	2024 Assessed Tolls	(From Above)	\$ 203,725,621.40
	4.4% Uncollectable Toll Revenue		\$ (8,982,788.66)
	2024 Net Toll Revenue		\$ 194,742,832.74
	E-ZPass Service Fee		\$ 3,020,946.93
	Interest Income		\$ 12,405,908.31
	Other Income		\$ 704,156.38
	1. Total Revenue - 2024		\$ 210,873,844.36
	2. Operating Expenses - 2024		\$ 84,050,900.40
	3. Net Revenue	(Line 1 - Line 2)	\$ 126,822,943.96
	4. Annual Debt Service		\$ 49,641,519.00
	5. 130% of Annual Debt Service		\$ 64,533,974.70
	6. Calculated Debt	(Line 3 / Line 4)	2.55
	Service Coverage Ratio		
<p>Therefore, the requirement that the Net Revenue for the preceding fiscal year be greater than 130% of the Annual Debt Service is met, satisfying the requirements of the current Commission's Bond Indenture, Section 501(a)(1). The Commission's resolution to maintain a minimum Debt Service Coverage Ratio of 2.0 is also met.</p>			

Table 8: Projected Revenue and Expenditures for 2025

Region	Bridge	2025 Volume	2025 Revenue
Southern	Trenton-Morrisville	8,643,151	\$ 28,632,029.66
Southern	Scudder Falls	8,423,459	\$ 18,988,711.70
Southern	New Hope-Lambertville	1,754,496	\$ 4,853,839.80
Central	Interstate 78	11,297,639	\$ 84,071,563.71
Central	Easton-Phillipsburg	5,419,893	\$ 15,547,103.50
Northern	Portland-Columbia	1,328,965	\$ 4,492,835.10
Northern	Delaware Water Gap	9,995,575	\$ 48,774,185.39
Northern	Milford-Montague	1,223,552	\$ 2,586,669.34
	Total	48,086,730	\$ 207,946,938.20
	2025 Assessed Tolls		\$ 207,946,938.20
	7.0% Estimated Uncollectable Toll Revenue		\$ (14,556,285.68)
	2025 Net Toll Revenue		\$ 193,390,652.52
	E-ZPass Service Fee Estimate (2025 Budgeted)		\$ 3,508,370.00
	Interest Income (2025 Budgeted)		\$ 11,370,630.00
	Other Income		\$ 242,000.00
	1. Total Revenue - 2025		\$ 208,511,652.52
	2. Operating Expenses - 2025 (2025 Budgeted)		\$ 105,858,460.00
	3. Net Revenue (Line 1 - Line 2)		\$ 102,653,192.52
	4. Annual Debt Service (2025 Budgeted)		\$ 48,594,469.00
	5. 130% of Annual Debt Service		\$ 63,172,809.70
	6. Calculated Debt Service Coverage Ratio (Line 3 / Line 4)		2.11

Therefore, the requirement that the Net Revenue for the preceding fiscal year be greater than 130% of the Annual Debt Service is met, satisfying the requirements of the current Commission's Bond Indenture, Section 501(a)(1). The Commission's resolution to maintain a minimum Debt Service Coverage Ratio of 2.0 is also met.

**Appendix A:
Historical Traffic Volumes
DRJTBC Toll-Supported and Toll Bridges**



Table A-1 Toll-Supported Bridge Volumes

Year	Lower Trenton	Caloun Street	Sudder Falls	Washington Crossing	New Hope Lambertville	Centre Bridge-Stockton	Ulenstown-Frenchtown	Upper Black Millford	Regelsville	Northampton Street	Riverton-Belvidere	Total
2003	6,432,733	7,234,336	20,482,074	2,544,878	5,806,922	2,088,050	1,546,014	1,567,454	1,152,919	8,527,665	1,971,130	59,354,175
2004	6,313,867	6,907,528	20,687,029	2,701,686	3,552,437	2,139,209	1,528,210	1,617,459	1,142,907	8,349,450	1,939,005	56,876,787
2005	6,057,304	6,754,817	20,105,105	2,111,283	4,950,542	1,890,227	1,412,626	1,483,576	1,227,479	8,145,063	1,883,071	56,021,093
2006	6,060,563	6,677,433	20,427,805	2,380,890	5,138,287	1,783,713	1,394,485	1,442,110	1,240,064	8,443,099	1,871,083	56,859,532
2007	6,789,956	6,757,686	21,326,836	2,500,349	5,318,588	1,187,451	1,425,424	1,384,089	1,251,535	8,390,862	1,615,672	57,948,448
2008	6,726,150	6,742,932	21,321,390	2,593,982	5,122,435	1,618,165	1,401,665	1,262,696	1,227,108	7,869,191	1,732,702	57,618,416
2009	6,615,922	6,703,922	20,840,592	2,516,585	4,897,198	1,674,056	1,434,618	1,332,822	1,181,285	7,871,852	1,760,905	56,829,757
2010	7,324,978	3,893,390	21,239,105	2,112,012	5,219,813	1,751,187	1,508,144	1,353,173	1,124,800	7,663,089	1,749,958	54,939,649
2011	6,012,330	5,931,173	20,991,631	2,579,297	5,214,660	1,650,683	1,702,129	806,174	1,206,324	7,256,278	1,562,252	54,912,931
2012	5,869,917	6,123,919	21,528,302	2,577,391	5,244,046	1,756,908	1,479,234	1,276,062	1,215,335	7,377,827	1,576,668	56,025,609
2013	5,872,699	6,163,988	21,257,596	2,734,607	5,163,319	1,756,904	1,502,857	1,220,444	1,216,726	7,607,257	1,628,895	56,125,292
2014	5,745,830	6,176,515	21,335,578	2,693,020	5,047,719	1,702,911	1,452,756	1,336,774	1,168,556	7,507,977	1,605,873	55,773,509
2015	5,843,036	6,438,469	21,594,797	2,650,661	4,967,825	1,712,404	1,464,058	1,365,146	1,221,325	7,279,251	1,600,423	56,137,395
2016	5,452,648	6,361,380	22,084,483	2,743,743	4,871,416	1,680,965	1,595,402	1,346,356	1,245,987	7,068,617	1,626,062	56,077,059
2017	5,595,983	6,010,841	21,464,166	2,176,756	4,786,392	1,693,360	1,614,224	1,302,321	1,198,278	6,814,146	1,825,044	54,481,511
2018	5,488,706	5,780,752	19,270,764	2,190,365	4,901,050	1,685,542	1,749,734	1,270,627	1,171,876	6,244,710	1,798,051	51,552,177
2019	5,661,752	5,612,283	9,696,749	2,660,916	4,598,108	1,815,971	1,960,389	1,267,348	1,174,668	6,158,266	1,851,291	42,457,741
2020	5,212,653	4,820,191	-	2,038,656	3,763,235	1,642,982	1,443,708	1,161,077	1,030,592	5,541,755	1,638,772	28,293,621
2021	5,895,098	5,557,182	-	2,329,415	4,454,221	1,582,589	1,625,464	1,232,463	1,134,040	6,015,807	1,748,510	31,574,789
2022	6,066,614	5,652,332	-	2,864,164	4,363,049	1,679,263	1,619,623	1,295,440	1,139,392	4,998,463	1,799,940	31,478,281
2023	6,494,020	4,969,518	-	2,609,702	4,455,814	1,496,619	1,544,632	1,271,238	1,130,386	6,045,269	1,505,595	31,522,794
2024	6,579,917	6,175,380	-	2,433,393	2,186,048	1,689,490	1,778,984	1,413,657	1,066,664	6,503,027	1,494,173	31,320,733

Table A-2 2003 Toll-Supported Bridge Volumes

Month	Lower Trenton	Cahoon Street	Scudder Falls	Washington Crossing	New Hope-Lambertville	Centre Bridge-Stockton	Uhlertown-Fronttown	Upper Black Eddy-Milford	Riegelville	Northampton Street	Riverton-Belvidere	Total
January	474,869	550,000	1,599,968	196,664	429,548	157,104	117,000	100,000	79,000	974,041	143,833	4,822,027
February	443,845	521,260	1,356,222	164,661	377,167	122,798	95,028	101,033	78,494	555,358	128,562	3,944,428
March	548,534	640,157	1,693,978	207,462	482,877	159,330	123,253	128,069	96,178	685,567	161,045	4,926,450
April	538,237	636,833	1,731,919	214,795	488,760	178,486	127,826	132,334	100,623	689,978	167,730	5,007,521
May	564,018	650,000	1,803,229	221,906	514,736	189,238	138,952	144,159	105,264	722,607	179,714	5,233,823
June	551,801	611,738	1,774,949	220,403	509,340	188,205	138,492	140,910	100,064	700,702	176,310	5,112,914
July	579,269	639,029	1,825,107	234,055	535,268	203,903	152,565	148,691	105,971	721,007	185,300	5,330,165
August	569,290	626,182	1,797,945	223,958	527,067	195,991	147,191	145,387	103,158	720,548	176,188	5,232,905
September	547,070	596,817	1,725,191	219,640	482,969	178,125	133,080	136,146	94,722	691,376	168,274	4,973,410
October	573,398	621,353	1,849,644	236,089	522,009	188,364	136,929	141,315	100,340	724,195	177,738	5,271,374
November	515,313	568,435	1,689,946	205,939	478,800	173,185	124,837	128,857	94,727	673,099	157,195	4,810,333
December	527,089	572,532	1,633,976	199,306	458,381	153,321	110,861	120,553	94,378	669,187	149,241	4,688,825
Total	6,432,733	7,234,336	20,482,074	2,544,878	5,806,922	2,088,050	1,546,014	1,567,454	1,152,919	8,527,665	1,971,130	59,354,175

Table A-3 2004 Toll-Supported Bridge Volumes

Month	Lower Trenton Street	Cahoon Street	Scudder Falls	Washington Crossing	New Hope-Lambertville	Centre Bridge-Stockton	Ulsterstown-Franctown	Upper Black Eddy-Milford	Riegelsville	Northampton Street	Riverton-Belvidere	Total
January	474,869	545,773	1,558,639	215,643	131,272	158,320	104,599	112,951	89,299	647,096	139,963	4,178,424
February	491,631	541,831	1,584,203	220,054	157,576	162,945	108,568	114,563	86,645	646,150	141,661	4,255,827
March	543,079	599,213	1,773,426	244,549	137,807	181,410	122,478	128,366	97,390	718,412	160,225	4,706,355
April	532,424	594,358	1,802,794	250,560	154,061	193,391	130,759	141,162	97,980	724,557	164,864	4,786,910
May	548,806	619,033	1,841,026	270,327	143,402	214,181	143,818	149,292	100,696	750,157	174,202	4,954,940
June	537,692	609,804	1,831,365	250,175	301,416	196,765	139,959	146,241	97,578	708,925	171,847	4,991,767
July	533,218	584,653	1,758,351	231,474	426,710	188,715	146,966	149,039	98,234	716,311	174,983	5,008,654
August	536,367	555,972	1,811,783	221,746	436,722	185,161	144,138	144,543	97,182	720,922	170,090	5,024,626
September	547,070	534,777	1,789,294	199,741	390,205	166,567	125,187	133,017	89,810	634,981	160,925	4,771,574
October	573,398	587,641	1,459,900	216,130	443,149	177,050	133,368	142,999	98,574	714,031	170,631	4,716,871
November	515,313	556,841	1,740,078	190,649	409,346	159,500	116,295	127,600	92,094	675,077	153,783	4,736,576
December	480,000	577,632	1,736,170	190,638	420,771	155,204	112,075	127,686	97,425	692,831	155,831	4,746,263
Total	6,313,867	6,907,528	20,687,029	2,701,686	3,552,437	2,139,209	1,528,210	1,617,459	1,142,907	8,349,450	1,939,005	56,878,787

Table A-4 2005 Toll-Supported Bridge Volumes

Month	Lower Trenton Street	Cahoon Street	Scudder Falls	Washington Crossing	New Hope- Lambertville	Centre Bridge- Stockton	Uitertown- Frantstown	Upper Black Eddy-Milford	Riegelville	Northampton Street	Riverton- Belvidere	Total
January	474,869	520,094	1,566,950	175,523	369,422	130,496	98,147	115,312	85,589	615,480	136,364	4,288,246
February	436,839	506,071	1,521,736	167,777	359,028	126,870	95,552	109,768	82,146	599,385	135,497	4,140,669
March	543,079	580,142	1,766,709	192,763	405,788	148,274	113,344	126,969	94,544	692,465	155,279	4,819,356
April	532,424	527,249	1,131,518	21,035	385,277	145,725	103,752	116,299	99,691	591,668	147,988	3,802,626
May	548,806	604,119	1,877,850	183,915	441,442	182,304	128,463	137,669	114,644	716,255	167,351	5,102,818
June	537,692	601,724	1,858,574	198,817	436,210	182,171	127,998	132,171	116,004	710,299	165,285	5,066,945
July	533,218	599,309	1,786,565	202,953	427,856	188,107	138,408	135,112	114,466	700,001	170,799	4,996,794
August	510,000	598,063	1,858,505	201,975	437,261	180,094	134,231	131,779	110,654	741,908	162,021	5,066,491
September	482,514	558,116	1,662,649	202,075	417,298	160,857	125,248	125,340	103,239	690,890	160,440	4,688,666
October	504,022	560,559	1,745,874	200,667	439,579	172,000	125,108	124,343	104,940	710,506	166,786	4,854,384
November	472,857	541,370	1,654,746	186,307	417,122	145,307	116,073	116,732	99,694	678,235	159,536	4,587,979
December	480,984	558,001	1,673,429	177,476	414,259	128,022	106,302	112,082	101,868	697,971	155,725	4,606,119
Total	6,057,304	6,754,817	20,105,105	2,111,283	4,950,542	1,890,227	1,412,626	1,483,576	1,227,479	8,145,063	1,883,071	56,021,093

Table A-5 2006 Toll-Supported Bridge Volumes

Month	Lower Trenton	Cahoon Street	Scudder Falls	Washington Crossing	New Hope- Lambertville	Centre Bridge- Stockton	Uhlertown- Frenchtown	Upper Black Eddy-Milford	Riegelville	Northampton Street	Riverton- Belvidere	Total
January	474,869	542,134	1,647,638	180,403	392,376	113,462	106,700	109,085	97,553	692,038	156,259	4,512,517
February	460,026	506,035	1,512,963	162,729	329,479	114,662	96,112	101,386	90,141	657,336	144,571	4,175,440
March	523,914	581,075	1,776,740	191,241	429,947	145,430	116,468	118,054	105,674	743,968	167,761	4,900,272
April	504,442	559,811	1,734,750	195,203	444,336	154,511	120,327	121,299	107,097	739,970	164,243	4,845,989
May	527,000	581,547	1,826,526	212,848	464,451	169,518	130,353	135,000	111,162	753,909	173,749	5,086,063
June	512,623	600,000	1,788,813	205,000	450,000	165,000	128,000	111,000	106,000	691,000	173,000	4,930,436
July	506,000	558,000	1,700,000	200,000	445,000	159,000	115,000	141,000	104,618	670,000	163,480	4,762,098
August	522,121	570,908	1,826,859	212,444	458,066	159,240	115,004	145,038	105,974	703,761	162,924	4,982,339
September	507,037	539,572	1,687,969	208,244	432,513	149,144	119,096	116,836	101,082	676,601	156,138	4,694,232
October	522,611	562,501	1,511,747	224,156	445,294	156,057	123,489	120,092	104,976	713,693	122,807	4,607,423
November	491,981	529,549	1,703,521	193,677	409,206	148,027	110,682	109,788	100,046	679,434	130,358	4,606,269
December	507,939	546,301	1,710,279	194,945	437,619	149,662	113,254	113,532	105,741	721,389	155,793	4,756,454
Total	6,060,563	6,677,433	20,427,805	2,380,890	5,138,287	1,783,713	1,394,485	1,442,110	1,240,064	8,443,099	1,871,083	56,859,532

Table A-6 2007 Toll-Supported Bridge Volumes

Month	Lower Trenton	Cahoon Street	Scudder Falls	Washington Crossing	New Hope-Lambertville	Centre Bridge-Stockton	Uitertown-Fronttown	Upper Black Eddy-Milford	Riegelville	Northampton Street	Riverton-Belvidere	Total
January	524,204	542,687	1,685,485	192,444	419,839	41,725	109,786	105,158	96,816	693,543	118,486	4,530,173
February	469,357	473,726	1,500,683	171,680	367,118	37,041	93,879	91,227	85,694	605,955	102,020	3,998,380
March	563,583	565,893	1,757,094	200,232	441,053	42,871	112,786	110,080	100,047	719,066	122,695	4,735,400
April	552,445	553,288	1,753,484	199,323	440,986	52,777	116,939	111,931	104,787	725,886	124,217	4,736,063
May	610,088	605,582	1,907,911	228,224	485,112	-	135,253	125,821	114,212	757,722	152,232	5,122,157
June	588,576	597,164	1,873,937	219,692	459,198	144,609	129,958	121,992	110,936	716,876	140,936	5,103,874
July	585,804	594,745	1,840,925	214,810	469,964	156,410	134,273	128,239	111,487	703,747	140,140	5,080,544
August	607,531	606,545	1,899,467	215,831	473,885	153,788	131,437	128,664	110,141	718,414	150,648	5,196,351
September	560,732	550,187	1,757,370	209,360	449,773	151,546	124,988	122,259	104,853	679,051	145,880	4,855,999
October	604,763	581,938	1,895,727	231,077	464,487	148,710	125,436	121,808	109,742	714,884	153,385	5,151,957
November	568,910	535,795	1,769,634	208,935	426,255	132,809	108,631	111,020	102,463	686,364	137,410	4,788,226
December	553,963	550,136	1,685,119	208,741	420,918	125,165	102,058	105,890	100,357	669,354	127,623	4,649,324
Total	6,789,956	6,757,686	21,326,836	2,500,349	5,318,588	1,187,451	1,425,424	1,384,089	1,251,535	8,390,862	1,615,672	57,948,448

Estimated figures due to adjustments shown in italics and adjusted figures due to counter malfunction rounded
 Centre Bridge - Stockton Bridge weekday closures for TS-429A (Jan-May, Nov) and the count station loop detectors were replaced in May
 Riverton - Belvidere Bridge weekend and weekday closures for TS-371A (Jan-July, Oct-Nov)
 Increase in traffic volume on Lower Trenton Bridge is a result of construction on the Trenton - Morrisville Toll Bridge (T-380B)

Table A-7 2008 Toll-Supported Bridge Volumes

Month	Lower Trenton	Cahoon Street	Scudder Falls	Washington Crossing	New Hope-Lambertville	Centre Bridge-Stockton	Ulenstown-Frenchtown	Upper Black Eddy-Milford	Riegelville	Northampton Street	Riverton-Belvidere	Total
January	549,171	546,405	1,713,675	212,292	401,420	118,394	107,030	104,657	100,513	684,793	136,459	4,674,809
February	517,339	518,435	1,599,753	196,860	374,271	104,984	95,233	90,579	93,440	633,000	120,662	4,344,555
March	581,858	576,991	1,757,169	213,822	418,575	127,589	111,371	106,873	107,891	669,907	143,026	4,815,072
April	584,031	577,733	1,819,802	232,002	434,746	135,471	116,558	108,559	112,799	636,451	149,179	4,907,331
May	589,750	585,529	1,853,292	236,178	459,526	145,187	126,709	117,382	114,937	666,428	154,320	5,049,238
June	579,166	570,037	1,809,912	222,609	447,505	146,138	124,312	114,459	110,376	683,685	148,997	4,957,196
July	585,286	581,134	1,827,359	206,636	457,613	143,615	131,454	114,257	102,929	684,172	154,410	4,988,865
August	581,026	574,488	1,813,596	217,165	463,633	150,120	129,548	114,789	104,825	664,408	152,225	4,965,823
September	551,811	553,676	1,815,570	216,066	424,235	137,923	116,167	102,073	98,494	635,448	147,383	4,798,846
October	557,418	577,329	1,826,723	233,058	443,608	140,967	126,718	98,207	103,852	672,295	156,041	4,936,216
November	508,556	517,250	1,690,526	197,744	395,624	136,819	112,026	92,901	89,294	605,825	136,633	4,483,198
December	540,738	563,926	1,794,014	209,550	401,679	130,957	104,539	97,961	87,757	632,779	133,367	4,697,266
Total	6,726,150	6,742,932	21,321,390	2,593,982	5,122,435	1,618,165	1,401,665	1,262,696	1,227,108	7,869,191	1,732,702	57,618,416

Estimated figures due to adjustments shown in red and adjusted figures due to counter malfunction rounded
 Increase in traffic volume on Lower Trenton Bridge (January and February) is a result of construction on the Trenton - Morrisville Toll Bridge (T-380B)

Table A-8 2009 Toll-Supported Bridge Volumes

Month	Lower Trenton Street	Calhoun Street	Scudder Falls	Washington Crossing	New Hope-Lambertville	Centre Bridge-Stockton	Uhlertown-Frenchtown	Upper Black Eddy-Millford	Riegelville	Northampton Street	Riverton-Belvidere	Total
January	518,115	553,851	1,609,018	199,361	350,943	116,074	97,639	92,981	79,741	603,279	126,110	4,347,112
February	500,303	490,991	1,522,087	189,393	351,147	115,328	96,407	91,060	77,190	591,359	125,656	4,150,921
March	565,748	555,634	1,707,097	220,540	384,131	132,470	110,887	103,561	88,307	666,954	144,833	4,680,162
April	579,305	582,724	1,827,731	224,781	403,555	143,491	119,268	110,797	94,754	684,941	152,173	4,923,520
May	588,519	590,292	1,831,390	224,827	426,904	164,146	131,358	120,087	97,028	705,446	161,272	5,041,269
June	579,191	551,107	1,823,098	214,028	417,571	146,159	126,641	116,651	105,790	684,546	157,903	4,922,685
July	588,155	580,735	1,734,852	218,537	448,893	142,686	140,607	123,648	113,477	661,319	160,559	4,913,467
August	574,407	572,997	1,812,943	207,522	448,977	160,092	133,636	122,459	110,022	682,176	152,663	4,977,894
September	541,100	559,584	1,739,818	210,094	421,046	155,092	127,499	117,161	103,864	638,612	151,627	4,765,497
October	559,056	568,089	1,796,426	216,949	432,672	137,538	126,932	116,117	107,958	642,662	154,067	4,858,467
November	513,799	537,297	1,724,337	198,432	411,658	128,515	116,369	108,037	101,092	585,296	139,078	4,563,910
December	508,224	560,621	1,711,797	192,122	399,701	132,464	107,376	110,263	102,062	725,262	134,964	4,684,856
Total	6,615,922	6,703,922	20,840,592	2,516,585	4,897,198	1,674,056	1,434,618	1,332,822	1,181,285	7,871,852	1,760,905	56,829,760

Estimated figures due to adjustments shown in red and adjusted figures due to counter malfunction rounded
 Traffic counters down throughout parts of 2009 at Calhoun Street, Scudder Falls, Centre Bridge-Stockton, and Uhlertown-Frenchtown bridges. Data interpolated from 2008 and available 2009 volumes.

Table A-9 2010 Toll-Supported Bridge Volumes

Month	Lower Trenton	Calloun Street 6 & 8	Sudder Falls 68	Washington Crossing 5 & 11	New Hope- Lambertville 1	Centre bridge- Stockton 24	Uitertown- Frenchtown	Upper Black Eddy-Milford 7	Riegelsville 10 12	Northampton Street 3 & 15	Riverton- Belvidere 13	Total
January	505,216	525,777	1,622,222	193,667	386,056	121,208	108,185	67,832	100,602	628,261	132,997	4,392,023
February	420,113	442,974	1,322,783	151,557	315,160	93,665	86,271	80,974	82,136	546,184	111,426	3,653,243
March	540,038	559,360	1,784,640	208,013	420,393	134,889	122,100	107,565	106,859	677,653	149,459	4,810,969
April	545,730	545,724	1,787,227	215,526	434,548	151,596	127,780	111,332	111,965	635,633	153,757	4,820,818
May	643,378	438,223	1,848,946	228,829	464,086	165,562	139,825	124,231	111,742	676,601	161,399	5,002,822
June	808,530	-	1,896,540	230,280	460,795	158,409	136,229	123,778	110,293	658,975	160,369	4,744,198
July	809,276	-	1,858,277	221,809	470,331	167,510	144,780	126,866	112,437	668,408	162,045	4,741,739
August	792,494	-	1,953,898	54,554	498,091	165,966	140,583	123,130	109,481	662,140	155,544	4,655,881
September	718,152	-	1,864,598	-	473,995	158,501	134,987	123,972	83,554	622,533	149,984	4,330,276
October	547,704	463,826	1,854,118	219,395	460,605	157,605	134,242	132,048	61,668	622,346	159,386	4,812,943
November	500,631	454,447	1,757,295	203,246	419,620	141,121	119,611	120,105	53,808	609,965	125,704	4,505,553
December	493,716	463,059	1,688,561	185,136	416,133	135,155	113,551	111,340	80,255	654,390	127,888	4,469,184
Total	7,324,978	3,893,390	21,239,105	2,112,012	5,219,813	1,751,187	1,508,144	1,353,173	1,124,800	7,663,089	1,749,958	54,939,649

Note Estimated figures due to adjustments shown in red. Data interpolated from 2009 and available 2010 volumes.

1. Counters down 1-29-10 to 1-31-10. Data interpolated.
2. WB Counter down from 1-24-10 to 1-31-10. Data interpolated.
3. Counters down 1-30-10 to 1-31-10. Data interpolated.
4. WB Counter down 2-1-10 to 2-21-10. Data interpolated.
5. Counter down 3-16-10 to 3-18-10. Data interpolated.
6. Counter down 4-26-10 to 4-31-10. Data interpolated.
7. Counters down 4-1-10 to 4-30-10. Data interpolated from 2009.
8. Calloun Street TSB closed from 5-24-10 to 9-24-10 for rehabilitation under Contract No. TS-442A. Counters not in service.
9. Washington Crossing TSB closed from 8-9-10 to 9-24-10 for rehabilitation under Contract No. TS-447B. Counters not in service.
10. Riegelsville TSB closed 8:00 PM Fri 9-17-10 to 7:00 AM Mon 9-20-10 under Contract No. TS-445A. Counters not in service.
11. Counters down 11-1-10 to 11-30-10. July 2010 data interpolated decreased by 5%.
12. Bridge closed on weekends due to construction under Contract No. TS-445A.
13. Counters down 11-2-10 to 11-19-10. Data interpolated.
14. Counter down 12-1-10 to 12-22-10. 2009 data interpolated and decreased by 1%.
15. Counter down 12-22-10 to 12-31-10. Data interpolated.

Table A-10 2011 Toll-Supported Bridge Volumes

Month	Trenton 4, 9	Calhoun Street 4	Scudder Falls 4, 8	Washington Crossing 4, 7, 10	New Hope-Lambertville 14, 12	Centre Bridge-Stockton 4, 9	Upper Black Eddy-Milford 3, 5, 13	Riegelsville 11	Northampton Street 2, 6	Riverton-Baldere 6	Total	
January	454,207	423,944	1,519,742	190,750	367,151	107,382	134,996	32,113	83,659	543,466	114,464	3,971,874
February	452,895	414,858	1,518,049	182,367	356,796	111,898	145,651	-	84,020	526,198	109,248	3,901,980
March	521,286	502,380	1,787,602	223,717	432,676	138,240	172,162	-	103,601	626,165	136,482	4,644,311
April	508,511	496,777	1,770,925	221,167	439,602	143,141	177,187	-	105,298	624,676	135,163	4,622,447
May	527,912	519,601	1,831,806	234,476	470,055	157,269	166,907	37,109	104,711	632,516	140,625	4,822,987
June	525,360	522,741	1,855,875	240,178	472,979	160,962	138,074	107,577	104,881	619,199	143,058	4,890,884
July	553,312	526,005	1,735,386	228,556	489,785	171,187	151,753	113,069	110,486	638,816	144,880	4,863,235
August	494,056	517,411	1,797,836	226,796	417,678	144,017	137,823	104,803	106,993	628,242	140,103	4,715,758
September	495,172	494,016	1,774,737	215,325	430,645	115,310	114,430	107,139	97,415	579,830	123,982	4,548,001
October	506,289	511,946	1,836,021	220,539	472,071	132,639	129,159	104,644	106,238	615,244	125,118	4,759,908
November	478,616	488,835	1,785,893	191,278	431,199	127,140	117,083	98,224	97,899	593,369	121,915	4,531,451
December	494,714	512,659	1,777,759	204,148	434,023	141,498	116,904	101,496	101,123	628,557	127,214	4,640,095
Total	6,012,330	5,931,173	20,991,631	2,579,297	5,214,660	1,650,683	1,702,129	806,174	1,206,324	7,256,278	1,562,252	54,912,931

Note Estimated figures due to adjustments shown in red. Data interpolated from 2010 and available 2011 volumes.

1. Counters down 1-22-11 to 1-31-11. Data interpolated.
2. Counters down 1-1-11 to 1-10-11. Data interpolated.
3. Upper Black Eddy TSB closed from 1-11-11 to 5-20-11 for rehabilitation under Contract NO. TS-444A. Counters not in service.
4. Counters down 5-4-11 to 5-9-11. Data interpolated.
5. Bridge closed 5-1-11 to late 5-20-11 due to construction Contract TS-444A.
6. Counters down 5-2-11 to 5-9-11. Data interpolated.
7. Counter down 6-10-11 to 6-30-11. Data interpolated.
8. Counter down 7-13-11 to 7-19-11. Data interpolated.
9. Lower Trenton TSB and Centre Bridge-Stockton TSB closed 8-28-11 and 8-29-11 due to Tropical Storm Irene.
10. Counters down 9-1-11 to 9-30-11. August 2011 data interpolated.
11. Riegelsville TSB counters down 10-29-11 to 10-31-11. Data interpolated.
12. Counters down from 12-1-11 to 12-31-11. 2010 data increased by 4%.
13. Counter down 12-13-11 to 12-19-11. Data interpolated.

Table A-11 2012 Toll-Supported Bridge Volumes

Month	Lower Trenton 5/6/7/8/11	Calhoun Street 5/11	Scudder Falls 2/6/11	Washington Crossing 11	New Hope 1/2/3/4/9/11	Centre bridge Stockton 9/11	Uhlertown-Frenchtown 9/11	Upper Black Eddy-Milford 11	Riegelsville 10/11	Northampton Street 11	Riverton-Balders 10/11	Total
January	474,869	481,371	1,698,191	197,694	394,433	126,775	111,245	97,224	92,591	597,256	120,915	4,392,563
February	466,263	457,680	1,662,240	192,157	385,348	123,173	108,228	91,759	89,500	585,264	121,751	4,283,363
March	516,832	528,184	1,831,777	216,154	427,093	143,301	124,544	106,824	101,660	653,300	137,245	4,786,914
April	495,441	508,970	1,813,583	219,137	429,274	146,949	121,262	109,151	102,018	632,293	133,459	4,711,537
May	522,724	540,787	1,898,727	244,175	463,196	161,320	134,237	107,648	107,894	650,028	140,796	4,971,532
June	506,054	524,078	1,862,440	232,752	468,811	163,758	134,921	115,864	103,819	632,505	139,470	4,884,472
July	491,709	540,339	1,818,435	225,167	471,801	165,525	140,495	126,131	107,111	627,771	137,895	4,852,379
August	507,063	540,075	1,875,634	232,334	468,335	161,490	138,014	113,500	106,828	636,225	138,704	4,918,202
September	474,731	507,868	1,733,390	216,314	442,148	153,166	126,419	114,732	100,500	599,845	132,486	4,601,598
October	480,782	504,980	1,887,184	212,749	452,091	155,271	121,641	105,970	106,614	602,558	127,438	4,757,277
November	460,145	485,239	1,747,797	192,580	411,466	123,136	106,928	95,158	96,435	573,668	121,990	4,414,541
December	473,303	504,348	1,698,904	196,179	430,050	133,045	111,300	92,102	100,365	587,114	124,520	4,451,230
Total	5,869,917	6,123,919	21,528,302	2,577,391	5,244,046	1,756,908	1,479,234	1,276,062	1,215,335	7,377,827	1,576,668	56,025,610

Note Estimated figures due to adjustments shown in red. Data interpolated from 2011 and available 2012 volumes.

1. Counters down 1-1-12 to 1-31-12. Jan. 2011 data interpolated & increased by 6.8%.
2. Counter down 2-1-12 to 2-29-12. 2011 data interpolated & increased by 3.4%.
3. Counter down 3-1-12 to 3-31-12. 2011 data decreased by 2.2 %.
4. Counter down 4-1-12 to 4-8-12. Data interpolated.
5. Counter down 6-1-12 to 6-30-12. May 2012 data interpolated.
6. Counter down 7-1-12 to 7-12-12. Data interpolated.
7. Counter down 8-10-12 to 8-20-12. Data interpolated.
8. Counter down 9-27-12 to 9-30-12. Data interpolated.
9. Reduced traffic due to river flooding 9-8-11 and/or 9-9-11.
10. Counter down 10-1-12 to 10-31-12. Sept. 2012 data interpolated.
11. Hurricane Sandy 10-29-12 to 10-31-12.

Note : There were 29 days in Feb. 2012

Table A-12 - 2013 Toll-Supported Bridge Volumes

Month	Lower Trenton	Calhoun Street	Scudder Falls 13, 17, 18	Washington Crossing 3, 4, 8, 10, 14, 18	New Hope Lambertville 19	Centre Bridge Stockton 6, 11, 15	Uhlertown- Frenchtown	Upper Black Eddy-Milford	Reesville	Northampton Street 22	Riverton- Belvidere 5, 7, 9, 12, 16	Total
January	468,157	488,649	1,688,533	214,898	396,979	124,922	109,473	87,555	95,123	572,839	115,653	4,362,781
February	432,244	454,601	1,526,735	188,897	355,108	110,097	98,170	78,325	87,479	536,070	111,296	3,979,022
March	495,060	521,854	1,749,752	218,420	416,174	133,307	118,809	93,747	101,423	618,477	130,980	4,598,002
April	502,554	524,620	1,800,434	228,209	428,626	147,236	125,910	99,358	108,449	624,219	136,711	4,726,326
May	527,148	549,770	1,887,031	253,796	467,685	158,870	139,551	107,813	114,089	650,047	149,200	5,005,000
June	507,560	531,022	1,807,823	236,542	467,720	163,040	137,604	105,617	109,498	633,710	144,494	4,844,631
July	523,626	539,757	1,820,340	253,815	472,025	164,407	145,066	109,265	110,790	674,887	150,741	4,964,719
August	521,752	536,135	1,772,337	253,897	467,565	160,158	142,635	112,205	104,778	700,048	145,510	4,917,020
September	484,625	508,983	1,672,206	224,118	433,592	153,819	130,178	111,839	97,090	656,245	143,836	4,616,531
October	507,566	526,698	2,090,418	244,916	445,212	181,837	132,782	112,482	101,622	683,916	148,277	5,175,727
November	444,246	492,010	1,747,797	222,320	411,467	137,653	115,532	103,082	94,655	659,958	132,570	4,561,290
December	458,162	489,889	1,694,190	194,779	401,167	121,558	107,147	99,156	91,730	596,841	119,627	4,374,246
Total	5,872,699	6,163,988	21,257,596	2,734,607	5,163,319	1,756,904	1,502,857	1,220,444	1,216,726	7,607,257	1,628,895	56,125,293

Note Estimated figures due to adjustments shown in red. Data interpolated from 2012 and available 2013 volumes.

- (1) Counter down 1-2-13 to 1-10-13. Data interpolated.
- (2) Counter down 3-12-13 to 3-17-13. Data interpolated.
- (3) Counter down 4-12-13 to 4-30-13. April 2012 data interpolated.
- (4) Counter down 5-1-13 to 5-10-13. Data interpolated.
- (5) Counter down 5-27-13 to 5-31-13. Data interpolated.
- (6) Counter down 6-7-13 to 6-13-13. Data interpolated.
- (7) Counter down 6-1-13 to 6-3-13. Data interpolated.
- (8) Counter down 8-1-13 to 8-31-13. 2012 data interpolated and increased by 1%.
- (9) Counter down 8-18-13 to 8-27-13. Data interpolated.
- (10) Counter down 9-1-13 to 9-30-13. 2012 data interpolated and increased by 2.9%.
- (11) Westbound loop down 9-8-13 to 9-28-13. 2012 data interpolated and increased by 2.9%.
- (12) Traffic volume increase on Northampton St. & Riverton-Belvidere TSB due to T437A Easton-Phillipsburg TB Rehabilitation.
- (13) Counter down 10-1-13 to 10-31-13. 2102 data interpolated and increased by 10.6%.
- (14) Counter down 10-1-13 to 10-6-13. Data interpolated.
- (15) Counter down 10-25-13 to 10-29-13. Data interpolated.
- (16) Counter down 10-21-13 to 10-27-13. Data interpolated.
- (17) Roadway loops malfunctioned, used November 2012 data.

(18) Counter down 12-1-13 to 12-31-13. December 2012 data interpolated and decreased by 1%.

(19) Counter down 12-26-13 to 12-31-13. Data interpolated.

Table A-13 2014 Toll-Supported Bridge Volumes

Month	Lower Trenton 5-13 12-16-14	Calhoun Street 17-20	Scudder Falls 1-6, 20, 21-22	Washington Crossing 2-7, 11	New Hope 3-6, 12, 14	Centre bridge 4-9	Uhlertown-18	Upper Black Eddy-Millford	Reeselsville	Northampton Street	Riverton-Belvidere	Total
January	426,045	450,443	1,618,515	206,538	384,784	110,302	98,421	97,111	85,311	554,593	113,499	4,145,563
February	392,463	421,180	1,423,149	160,342	333,177	103,182	82,215	87,154	75,677	484,722	97,729	3,660,990
March	471,452	515,904	1,733,798	234,140	395,149	130,231	109,048	107,965	93,762	620,164	127,493	4,539,106
April	484,449	523,238	1,804,908	239,368	421,974	145,533	120,796	114,538	101,605	663,041	136,128	4,755,578
May	511,371	548,937	1,871,679	247,587	461,981	160,950	135,140	117,878	108,149	641,673	148,849	4,954,194
June	496,583	544,854	1,845,009	245,338	454,488	161,336	134,997	117,228	103,402	665,154	145,169	4,913,558
July	541,442	544,547	1,853,754	240,911	460,861	163,677	142,904	125,490	103,402	665,455	148,427	4,990,870
August	518,511	538,599	1,848,570	235,174	460,161	158,285	141,126	123,432	102,648	685,201	143,271	4,954,978
September	486,900	511,167	1,790,519	232,663	424,113	149,318	129,754	112,382	99,603	646,665	139,979	4,723,063
October	505,005	555,735	1,913,984	236,072	439,894	154,150	131,335	118,441	102,703	654,654	148,836	4,960,809
November	444,544	494,140	1,762,046	201,317	393,794	131,853	112,498	105,802	93,097	605,880	126,299	4,471,270
December	467,064	527,771	1,869,646	213,569	417,343	134,094	114,523	109,353	99,197	620,775	130,194	4,703,529
Total	5,745,830	6,176,515	21,335,578	2,693,020	5,047,719	1,702,911	1,452,756	1,336,774	1,168,556	7,507,977	1,605,873	55,773,508

Note Estimated figures due to adjustments shown in red. Data interpolated from 2013 and available 2014 volumes.

- (1) Counter down 1-1-14 to 1-31-14. Data interpolated and decreased by 5.75%
- (2) Counter down 1-1-14 to 1-31-14. Data interpolated and decreased by 5.75%
- (3) Counter down 1-1-14 to 1-31-14. 2013 data interpolated and decreased by 4.3%
- (4) Counter down 1-21-14 to 1-31-14. Data interpolated.
- (5) Counter down 2-1-14 to 2-9-14. Data interpolated.
- (6) Counter down 2-1-14 to 2-28-14. Data interpolated and decreased by 6.6%.
- (7) Counter down 2-18-14 to 2-28-14. Data interpolated.
- (8) Counter down 2-1-14 to 2-28-14. Data interpolated and decreased by 6.0%.
- (9) Counter down 2-1-14 to 2-28-14. Data interpolated and decreased by 6.0%.
- (10) Counter down 3-1-14 to 3-31-14. 2013 data interpolated and decreased by 0.5%.
- (11) Counter down 3-25-14 to 3-31-14. Data interpolated.
- (12) Counter down 3-24-14 to 3-31-14. Data interpolated.
- (13) Counter down 6-28-14 to 6-30-14. Data interpolated.
- (14) Counter down 6-28-14 to 6-30-14. Data interpolated.
- (15) Counter down 7-1-14 to 7-31-14. 2013 data interpolated and increased by 3.4%.
- (16) Counter down 8-1-14 to 8-31-14. 2013 data interpolated.
- (17) Counter down 8-28-14 to 8-31-14. Data interpolated.
- (18) Counter down 8-1-14 to 8-4-14. Data interpolated.
- (19) Counter down 9-1-14 to 9-12-14. Data interpolated.
- (20) Counter down 9-1-14 to 9-13-14. Data interpolated.
- (21) Counter down 10-20-14 to 10-31-14. Data interpolated.
- (22) Counter down 11-13-14. Data interpolated and increased by 1.0%

Table A-14 2015 Toll-Supported Bridge Volumes

Month	Trenton 1-5-7 10-12-13-17	Calhoun Street	Scudder Falls 2-6-8-19	Washington Crossing 11-13-15-21	New Hope- Lambertville 3-9	Centre Bridge- Stockton 18-20	Uhrstrom- Frenchtown	Upper Black Eddy-Milford 14	Reelsville	Northampton Street	Riverton- Baldwinsville 4	Total
January	445,608	476,461	1,748,388	184,976	366,507	110,665	98,782	96,931	87,884	573,837	110,199	4,300,237
February	417,189	460,599	1,518,415	174,083	329,726	100,048	88,850	89,199	81,977	523,343	103,299	3,886,728
March	482,273	512,458	1,795,912	195,456	384,323	119,416	102,578	103,672	94,272	593,164	122,587	4,506,112
April	507,274	541,313	1,822,369	222,746	414,253	144,485	119,878	110,828	106,181	630,158	136,211	4,755,696
May	543,362	585,296	1,883,644	238,100	459,873	162,195	136,204	117,368	113,774	651,809	145,019	5,036,644
June	517,071	569,404	1,871,514	228,339	435,235	152,838	130,809	120,642	107,618	628,256	141,746	4,903,472
July	566,888	576,937	1,872,875	259,250	454,303	162,239	144,710	129,286	112,381	642,430	147,850	5,069,149
August	531,097	557,877	1,828,984	238,186	447,311	166,788	134,669	133,071	111,614	627,891	144,590	4,922,078
September	462,730	548,564	1,763,540	242,685	416,533	156,108	131,473	120,382	101,734	600,683	141,432	4,685,864
October	482,294	564,504	1,882,717	249,653	434,368	160,867	132,559	121,716	104,033	617,208	147,080	4,896,999
November	448,008	508,149	1,786,427	206,254	405,690	137,834	121,556	110,172	99,023	582,929	129,155	4,535,196
December	439,241	536,908	1,820,012	210,934	419,702	138,921	121,990	111,879	100,834	607,542	131,255	4,639,218
Total	5,843,036	6,438,469	21,594,797	2,650,661	4,967,825	1,712,404	1,464,058	1,365,146	1,221,325	7,279,251	1,600,423	56,137,393

Note Estimated figures due to adjustments shown in red. Data interpolated from 2014 and available 2015 volumes.

- (1) Counter down 1-1-15 to 1-31-15. 2014 data interpolated and increased by 3.8%.
- (2) Counter down 1-1-15 to 1-31-15. 2013 data interpolated and increased by 3.8%.
- (3) Counter down 1-16-15 to 1-31-15. Data interpolated.
- (4) Counter down 1-6-15 to 1-13-15. Data interpolated.
- (5) Counter down 2-1-15 to 2-28-15. 2014 data interpolated and increased by 6.3%.
- (6) Counter down 2-1-15 to 2-28-15. Data interpolated.
- (7) Counter down 3-1-15 to 3-31-15. 2014 data interpolated and increased by 2.2%.
- (8) Counter down 3-1-15 to 3-31-15. 2013 data interpolated and increased by 2.2%.
- (9) Counter down 3-1-15 to 3-31-15. 2014 data interpolated and decreased by (2.5%).
- (10) - Traffic Counter was removed on 4/21/15 as part of the TS-639B Lower Trenton TSB Approach Roadway Improvements. Traffic data interpolated using May 2014 data and factored by 6.94%.
- (11) - Counter down 5/2/15 - 5/8/15, data interpolated.
- (12) Counter down 6-1-15 to 6-30-15 due to paving contract TS639B. 2104 data interpolated and increased by 3.48%.
- (13) Counter down 6-29-15 to 6-30-15. Data interpolated.
- (14) Counter down WB 6-9-15 to 6-30-15. 2014 data interpolated.
- (15) Counter down 8-1-15 to 8-31-15 due to paving Contract TS-639B. 2013 data interpolated and increased by 3.0%.
- (16) Counter down 8-1-15 to 8-31-15. 2014 data interpolated and increased by 3.0%.
- (17) Counter down 9-1-15 to 9-8-15. Data interpolated.
- (18) Counter down 9-1-14 to 9-13-14. Data interpolated.
- (19) Counter down 10-19-15 to 10-31-15. Data interpolated.
- (20) Counter down 10-1-15 to 10-31-15. 2014 data interpolated and increased by 4%.
- (21) Eastbound & Westbound data reversed. Counter not corrected correctly.

Table A-15 2016 Toll-Supported Bridge Volumes

Month	Trenton ²	Calhoun Street 13, 15	Scudder Falls 1, 4, 15, 16, 17, 18, 22, 26, 30	Washington Crossing 7, 9, 10, 12, 14, 17, 19	New Hope 2, 5, 20, 28, 32	Centre Bridge 24, 29, 33	Uhlertown-Stockton 18, 21, 24, 29, 33	Uhlertown-Frenchtown	Upper Black Eddy-Milford	Reesville	Northampton Street 25	Riverton-Baldere	Total
January	413,128	487,419	1,685,535	191,725	329,126	115,096	105,297	99,914	88,754	545,485	120,113	4,181,592	
February	406,614	472,030	1,713,515	188,306	377,946	114,602	104,840	96,356	88,395	543,510	118,303	4,224,417	
March	431,844	547,279	1,836,367	224,098	396,076	132,117	129,676	114,083	102,962	619,076	138,094	4,671,672	
April	434,170	539,164	1,852,400	229,991	404,580	140,625	131,783	104,321	104,441	610,023	137,115	4,688,613	
May	462,786	562,880	1,903,617	247,991	425,356	146,298	146,385	116,495	109,762	624,494	145,224	4,891,288	
June	482,837	565,905	1,911,111	239,314	436,988	151,910	148,302	124,580	113,653	617,102	144,360	4,936,062	
July	493,990	561,460	1,826,439	237,498	445,360	145,583	149,302	125,271	116,049	629,082	144,855	4,874,889	
August	493,674	546,340	1,909,386	250,774	432,949	160,515	145,685	120,943	114,075	617,089	143,873	4,935,303	
September	467,287	542,042	1,828,913	252,415	409,372	153,147	142,878	118,860	104,715	574,013	139,516	4,733,157	
October	469,855	525,574	1,930,354	257,466	421,441	154,140	142,246	112,945	104,651	587,031	141,114	4,846,816	
November	444,548	499,155	1,880,559	215,885	397,668	134,951	126,200	109,875	98,187	542,444	127,388	4,576,860	
December	451,915	512,132	1,806,287	208,281	394,553	131,983	122,808	102,713	100,343	559,268	126,107	4,516,390	
Total	5,452,648	6,361,380	22,084,483	2,743,743	4,871,416	1,680,965	1,595,402	1,346,356	1,245,987	7,068,617	1,626,062	56,077,059	

Note Estimated figures due to adjustments shown in red. Data interpolated from 2015 and available 2016 volumes.

- (1) Counter down 1-1-16 to 1-19-16. Data interpolated
- (2) Counter down 1-1-16 to 1-14-16. Data interpolated.
- (3) Counter down 2-19-16 to 2-23-16. Data interpolated.
- (4) Counter down 2-1-16 to 2-29-16. 2015 data interpolated and increased by 12.5%.
- (5) Counter down 2-1-16 to 2-29-16. 2015 data increased by 5.0%.
- (6) Counter down 3-1-16 to 3-9-16 & 3-28-16 to 3-31-16. Data interpolated.
- (7) Counter down 3-1-16 to 3-31-16. 2015 data interpolated and increased by 12.6%.
- (8) Counter down 4-1-16 to 4-8-16. Data interpolated.
- (9) Counter down 4-1-16 to 4-30-16. Data interpolated & increased by 4%.
- (10) Counter down 5/1/16 - 5/5/16. Data interpolated.
- (11) Counter down 6-1-16 to 6-4-16. Data interpolated.
- (12) Counter down 6-1-16 to 6-30-16. Data interpolated & increased by 3.75%.
- (13) Counter down 7-25-16 to 7-31-16. Data interpolated.
- (14) Counter down 7-1-16 to 7-31-16. 2015 data interpolated.
- (15) Counter down 8-1-16 to 8-8-16. 2. Data interpolated.
- (16) Counter down 8-26-16 to 8-31-16. Data interpolated.
- (17) Counter down 8-1-16 to 8-31-16. 2014 data interpolated and increased by 4.5%.
- (18) Counter down 8-1-16 to 8-31-16. 2015 data interpolated and decreased by 3.0%.
- (19) Counter down 9-1-16 to 9-30-16. 2015 data interpolated & increased by 4.0%.
- (20) Counter down 9-1-16 to 9-30-16. 2015 data interpolated & decreased by -2.0%.
- (21) Counter down 9-1-16 to 9-30-16. 2015 data interpolated & decreased by -2.0%.
- (22) Counter down 10-1-16 to 10-31-16. 2015 data interpolated & increased by 3.5%.
- (23) Counter down 10-1-16 to 10-31-16. 2015 data interpolated & increased by 3.5%.
- (24) Counter down 10-1-16 to 10-31-16. 2014 data interpolated.
- (25) Counter down 10-16-16 to 10-31-16. Data interpolated.
- (26) Counter down, used Nov. 2015 data and increased by 3.96%
- (27) Counter down 11/21/16 - 11/30/16, data interpolated.
- (28) Counter down, used Nov. 2015 data and increased by 3.96%
- (29) Counter down, used Nov. 2015 data and decreased by 2.29%
- (30) Counter down 12-1-16 to 12-31-16. 2015 data interpolated.
- (31) Counter down 12-1-16 to 12-31-16. 2015 data interpolated.
- (32) Counter down 12-1-16 to 12-31-16. 2015 data interpolated and decreased by 6.0%.
- (33) Counter down 12-1-16 to 12-31-16. 2015 data interpolated and decreased by 6.0%.

Table A-16 2017 Toll-Supported Bridge Volumes

Month	Lower Trenton	Calton Street	Scudder Falls ¹	Washington Crossing ²	New Hope- Lambertville	Centre bridge- Stockton	Uklesstown- Frenchtown	Upper Black Eddy-Milford	Reebersville	Northampton Street ²	Riverton- Belvidere	Total
January	441,068	487,759	1,760,371	164,802	391,982	114,283	114,820	104,279	90,129	536,732	119,620	4,325,845
February	434,828	485,466	1,686,423	159,997	356,677	106,160	119,457	98,340	85,712	576,877	134,551	4,244,488
March	465,811	521,347	1,804,646	169,155	382,710	120,956	129,805	102,045	92,177	589,618	152,466	4,530,736
April	466,585	509,789	1,820,751	185,248	410,708	145,931	140,030	111,304	102,423	588,406	168,656	4,649,831
May	491,325	510,749	1,874,788	196,032	435,433	156,464	144,449	117,575	105,696	540,153	173,942	4,746,606
June	492,695	506,457	1,866,923	197,690	451,042	161,131	133,807	117,105	108,683	544,001	171,481	4,751,015
July	488,261	485,475	1,788,722	189,485	425,284	163,373	150,857	114,490	108,674	539,497	160,015	4,614,133
August	491,902	511,159	1,870,566	191,718	381,959	159,334	142,075	113,577	107,782	607,523	154,803	4,732,398
September	466,429	498,926	1,736,494	186,726	374,584	151,077	129,981	107,307	102,183	574,116	145,091	4,472,914
October	471,706	505,793	1,834,498	194,007	391,610	150,498	148,744	110,526	102,940	582,054	156,631	4,649,007
November	444,418	491,399	1,746,968	177,906	376,271	135,072	140,451	102,870	95,509	556,951	143,457	4,411,272
December	440,955	496,522	1,673,015	163,990	408,132	129,081	119,748	102,903	96,370	578,218	144,331	4,353,265
Total	5,595,983	6,010,841	21,464,166	2,176,756	4,786,392	1,693,360	1,614,224	1,302,321	1,198,278	6,814,146	1,825,044	54,481,510

Note Estimated figures due to adjustments shown in red. Data interpolated from 2016 and available 2017 volumes.

(1) New counter not recording correct NB LL traffic. 2015/16 data interpolated and increased by 17%.

(2) Counter down in the EB RL from 1-1-17 to 1-15-17. 2015 data interpolated

(3) Error with counter on 7-18-17. Data interpolated.

Table A-17 2018 Toll-Supported Bridge Volumes

Month	Lower Trenton	Calhoun Street 4	Scudder Falls 1,2,5	Washington Crossing	New Hope- Lambertville 3,6	Centre Bridge- Stockton	Uhlenstrom- Frenchtown	Upper Black Eddy-Milford	Reebersville	Northampton Street	Riverton- Belvidere	Total
January	420,701	472,577	1,554,131	164,381	471,953	115,397	111,865	96,959	87,004	539,951	137,306	4,172,225
February	406,882	449,608	1,367,638	150,472	413,051	108,772	104,694	89,325	80,983	499,361	125,967	3,796,753
March	446,416	477,203	1,470,884	163,011	444,517	124,305	127,743	101,591	92,754	512,041	148,786	4,109,251
April	474,106	503,330	1,668,438	184,881	429,129	138,930	161,732	108,908	103,465	515,527	158,500	4,446,946
May	503,217	531,477	1,693,111	195,129	418,663	154,115	177,358	115,352	107,145	547,795	162,440	4,605,802
June	486,214	497,570	1,745,881	193,100	370,990	156,367	170,319	111,594	107,564	543,547	159,478	4,542,624
July	485,249	495,080	1,694,966	188,561	349,250	158,741	178,771	112,730	107,031	545,991	161,346	4,477,716
August	486,965	505,319	1,710,731	193,851	356,798	154,128	169,384	112,364	103,320	543,552	156,200	4,492,612
September	448,998	474,296	1,587,924	192,007	366,166	144,770	152,966	105,321	95,423	501,765	149,660	4,219,296
October	464,993	488,399	1,635,968	204,130	424,273	153,767	142,407	109,627	99,370	506,537	155,923	4,385,394
November	428,623	432,762	1,578,119	182,012	422,477	137,839	122,958	102,429	93,150	483,587	140,570	4,124,526
December	436,342	453,131	1,562,973	178,830	433,783	138,411	129,537	104,427	94,667	505,056	141,875	4,179,032
Total	5,488,706	5,780,752	19,270,764	2,190,365	4,901,050	1,685,542	1,749,734	1,270,627	1,171,876	6,244,710	1,798,051	51,552,176

Note Estimated figures due to adjustments shown in red. Data interpolated from 2017 and available 2018 volumes.

- (1) Scudder Falls bridge under construction since June 2017.
- (2) Counter down 3-3-18 to 3-15-18. Data interpolated.
- (3) Counter miscounted on 8 days. Data interpolated.
- (4) Counter down 4-16-18 and 4-17-18 due to power failure. Data interpolated.
- (5) Northbound counter error 4-25-18 to 4-29-18. Data interpolated.
- (6) Traffic Counts at NH-L were determined to be incorrect. The sensor at the facility was recalibrated.

Table A-18 2019 Toll-Supported Bridge Volumes

Month	Lower Trenton	Calhoun Street	Scudder Falls 12	Washington Crossing	New Hope- Lambertville 4	Centre Bridge- Stockton	Uhlenstown- Frenchtown 3,6	Upper Black Eddy-Milford	Reebersville	Northampton Street 57	Riverton- Belvidere	Total
January	427,734	424,302	1,503,716	160,929	378,643	120,697	129,124	96,387	84,919	487,946	135,710	3,950,107
February	395,774	396,802	1,356,928	153,128	348,599	107,232	129,112	88,979	78,983	453,910	126,065	3,635,512
March	463,662	459,538	1,529,699	192,485	418,890	131,431	154,761	103,942	93,799	518,329	154,144	4,220,680
April	464,454	475,326	1,545,930	211,385	399,685	147,235	174,155	107,880	99,815	513,660	157,065	4,296,590
May	485,541	493,964	1,579,224	233,317	384,459	169,751	191,628	114,098	107,059	528,616	168,997	4,456,654
June	481,275	483,056	1,593,141	229,031	367,586	166,442	186,208	110,076	107,683	534,018	169,830	4,428,346
July	520,453	508,784	588,111	262,922	357,426	172,158	189,273	112,428	108,809	549,490	169,976	3,539,830
August	507,960	526,146	-	279,397	378,733	174,952	179,496	111,486	108,317	547,340	168,486	2,982,313
September	479,092	485,789	-	243,548	360,985	162,850	151,397	104,544	98,146	506,795	158,383	2,751,529
October	493,882	484,464	-	255,524	399,213	164,314	169,750	109,978	101,504	507,892	160,609	2,847,130
November	466,685	456,074	-	224,876	385,550	154,101	155,391	104,447	94,824	498,655	144,902	2,685,505
December	475,240	418,038	-	214,374	418,339	144,808	150,094	103,103	90,810	511,615	137,124	2,663,545
Total	5,661,752	5,612,283	9,696,749	2,660,916	4,598,108	1,815,971	1,960,389	1,267,348	1,174,668	6,158,266	1,851,291	42,457,741

Note Estimated figures due to adjustments shown in red. Data interpolated from 2018 and available 2019 volumes.

- (1) Traffic Counter was deactivated July 10 when PA bound traffic was moved to new bridge.
- (2) On July 14, 2019, Scudder Falls became a Toll Bridge.
- (3) 3/19 Data Interpolated
- (4) In July traffic counts at NH-L were determined to be incorrect. The sensor at the facility was recalibrated.
- (5) Counter down from May 1 - 9. Data interpolated.
- (6) Counter down from May 19-22. Data interpolated.
- (7) Counter error 4/25-4/30. Data interpolated.

Table A-19 2020 Toll-Supported Bridge Volumes

Month	Lower Trenton	Calhoun Street	Washington Crossing	New Hope-Lambertville	Centre Bridge-Stockton	Ulitestown-Frenchtown	Upper Black Eddy-Milford	Regelesville	Northampton Street	Riverton-Belvidere	Total
January	468,822	399,227	214,425	397,885	138,403	144,350	100,222	88,178	496,517	139,877	2,587,906
February	451,368	372,476	201,682	377,181	133,311	144,727	96,294	83,604	477,350	131,985	2,469,978
March	406,603	353,001	154,831	321,073	120,579	121,882	89,897	78,619	438,965	128,179	2,213,629
April	310,632	279,121	95,798	215,055	96,117	86,823	72,692	63,957	352,956	101,135	1,674,286
May	403,762	375,040	139,688	251,795	130,650	121,626	92,888	84,130	437,554	131,539	2,168,672
June	445,194	441,431	183,815	206,398	149,119	130,247	97,470	90,765	458,801	143,397	2,346,637
July	483,129	478,167	177,802	289,461	154,046	120,808	104,274	95,239	505,666	152,787	2,561,379
August	480,256	463,279	178,688	326,852	156,843	122,808	106,214	94,565	503,622	151,456	2,584,583
September	456,258	459,063	182,684	342,132	151,520	114,273	103,583	92,113	479,923	149,123	2,530,672
October	468,582	427,797	193,008	376,486	157,334	119,990	106,338	95,413	491,923	152,374	2,589,245
November	421,934	383,685	164,074	327,305	132,073	118,155	96,798	84,186	451,350	131,881	2,311,441
December	416,113	387,904	152,161	331,612	122,987	98,019	94,407	79,823	447,128	125,039	2,255,193
Total	5,212,653	4,820,191	2,038,656	3,763,235	1,642,982	1,443,708	1,161,077	1,030,592	5,541,755	1,638,772	28,293,621

Notes:

- On 3/19/20, Due to COVID-19 Pandemic, PA Governor Wolf Orders Closure of Non-Life-Sustaining Businesses at 8 p.m. On 3/23/20, Gov. Wolf begins to issue Stay at Home Orders to specific counties. These restrictions were eased on June 5.
- On 3/21/20 Due to COVID-19 Pandemic, NJ Governor Murphy Announces Statewide Stay at Home Order, Closure of All Non-Essential Retail Businesses. These restrictions were eased on June 9.

Table A-20 2021 Toll-Supported Bridge Volumes

Month	Lower Trenton	Calhoun Street	Washington Crossing ¹	New Hope-Lambertville	Centre Bridge-Stockton	Ulitestown-Frenchtown	Upper Black Eddy-Milford ³	Regelesville	Northampton Street	Riverton-Belvidere	Total
January ¹	419,057	386,951	144,752	310,912	114,232	99,797	93,105	77,539	438,911	120,416	2,205,672
February ^{1,2}	349,154	350,053	108,192	237,480	85,775	67,774	71,632	62,874	367,200	95,476	1,795,610
March	460,466	446,897	165,540	343,734	130,413	120,562	100,298	88,253	480,046	139,945	2,476,154
April	489,842	452,701	177,701	352,949	142,090	141,127	104,271	93,230	516,643	146,870	2,617,424
May	535,904	493,537	201,879	397,520	162,030	156,927	111,602	102,845	558,390	161,156	2,881,790
June	538,611	481,821	209,491	397,165	163,892	152,070	109,429	103,747	541,902	159,056	2,857,184
July	551,150	515,891	217,871	415,298	172,726	155,590	112,044	106,573	549,604	167,076	2,963,823
August	536,030	499,680	241,178	387,067	162,109	148,006	106,282	103,187	534,918	160,250	2,878,707
September	507,481	457,855	210,069	401,288	110,406	146,634	103,825	99,505	505,902	154,257	2,697,222
October	521,889	492,009	231,780	446,422	116,933	163,236	111,782	103,753	524,076	159,008	2,870,888
November	490,844	480,039	217,149	385,140	110,960	140,361	103,232	97,150	490,563	142,575	2,658,013
December	494,670	499,748	203,813	379,246	111,023	133,380	104,961	95,384	507,652	142,425	2,672,302
Total	5,895,098	5,557,182	2,329,415	4,454,221	1,582,589	1,625,464	1,232,463	1,134,040	6,015,807	1,748,510	31,574,789

Note Estimated figures due to adjustments shown in red. Data interpolated from 2020 and available 2021 volumes.

(1) 1/31 to 2/2 - Nor'easter Snowstorm. Traffic volume lower than normal.

(2) 2/7 and 2/18 - Snowstorms. Traffic volume lower than normal.

(3) 3/14 - Traffic Counter Error. Data interpolated

(4) Sensor lost in lightning strike on 7/7 and unavailable until 7/23. Data interpolated

Table A-21 2022 Toll-Supported Bridge Volumes

Month	Lower Trenton ^{2,4}	Calhoun Street	Washington Crossing	New Hope-Lambertville	Centre Bridge-Stackton	Ulitestown-Frenchtown	Upper Black Eddy-Milford	Regelesville	Northampton Street ²	Riverton-Belvidere ⁵	Total
January ¹	435,837	436,890	158,207	304,508	86,724	95,513	92,761	78,274	455,715	122,287	2,266,716
February	452,657	450,624	176,763	319,081	96,878	108,541	89,799	80,360	458,039	123,610	2,356,370
March	517,828	517,639	203,343	367,720	115,107	141,442	102,576	93,750	512,781	138,014	2,710,200
April	517,948	505,937	226,561	369,881	127,259	154,517	107,843	102,667	434,742	138,532	2,685,888
May	535,257	510,815	232,351	388,236	134,620	153,664	111,493	107,212	404,971	134,008	2,712,627
June	533,083	486,481	533,083	235,845	392,449	130,326	152,260	109,315	104,557	416,671	3,094,070
July	537,803	470,873	229,379	410,191	125,837	145,104	111,657	99,851	418,475	128,740	2,677,910
August	545,720	474,703	234,506	407,795	116,284	139,557	109,365	99,942	434,082	129,995	2,691,949
September	510,236	456,745	227,606	388,144	114,211	138,673	105,745	94,651	449,088	120,416	2,605,515
October	515,457	449,165	231,907	403,687	128,964	147,856	108,531	95,509	465,195	124,046	2,670,317
November	476,007	439,469	209,531	374,991	119,856	133,618	100,948	89,199	422,648	111,370	2,477,637
December	488,781	452,991	200,927	392,970	121,074	130,812	102,462	88,662	438,170	112,251	2,529,100
Total	6,066,614	5,652,332	2,864,164	4,363,049	1,679,263	1,619,623	1,295,440	1,139,392	4,998,463	1,799,940	31,478,299

Notes:

- (1) 1/29 - Snowstorm. Traffic volume lower than normal.
- (2) Lane closed from 3/16 - 3/31
- (3) Counter connection lost 4-25 to 4-30. Data interpolated
- (4) Counter connection lost 6-22 to 6-27. Data interpolated
- (5) Counter connection lost 6-6 to 6-14. Data interpolated

Table A-22 2023 Toll-Supported Bridge Volumes

Month	Lower Trenton 1, 3	Calhoun Street 2	Washington Crossing 4, 5	New Hope-Lambertville	Centre Bridge-Stockton 7, 12	Ullertown-Frentham 6, 14	Upper Black Eddy-Milford 8, 13	Riegelville 9	Northampton Street 10	Riverton-Belvidere 11	Total
January	483,228	445,357	198,400	357,441	107,819	126,621	96,763	83,351	441,610	110,979	2,451,569
February	465,301	420,876	184,552	325,888	100,633	117,042	91,032	77,802	421,591	104,297	2,309,014
March	540,188	476,697	215,143	376,476	119,564	135,771	102,348	89,335	500,518	122,203	2,678,243
April	533,576	437,571	225,349	380,545	129,211	125,462	106,495	94,661	500,256	127,261	2,660,387
May	569,722	474,561	251,780	409,158	147,092	117,200	118,035	106,776	534,635	139,247	2,868,206
June	556,493	468,560	240,446	403,164	138,766	95,030	110,324	104,248	531,089	136,116	2,784,236
July	583,815	422,840	236,949	389,800	142,324	149,892	110,694	103,490	540,487	148,316	2,828,607
August	586,634	379,006	241,541	381,457	129,401	143,744	113,857	102,814	531,814	139,453	2,749,720
September	544,510	356,130	212,189	349,005	122,610	142,695	107,575	97,396	499,587	123,908	2,555,604
October	560,019	377,266	231,812	377,170	119,517	122,125	109,635	97,228	520,086	126,279	2,641,137
November	529,902	357,592	185,455	344,335	108,034	135,622	99,969	82,731	498,669	113,041	2,455,350
December	540,632	353,062	186,087	361,375	131,648	133,428	104,511	90,554	524,927	114,496	2,540,721
Total	6,494,020	4,969,518	2,609,702	4,455,814	1,496,619	1,544,632	1,271,238	1,130,386	6,045,269	1,505,595	31,522,794

Notes:

- (1) Counter malfunction (power surge). 4-13 Data interpolated
- (2) Counter malfunction (power surge). 4-13 to 4-17 Data interpolated
- (3) Counter issue 6-15 to 6-16. Data interpolated
- (4) Counter connection lost 6-14 to 6-30. Data interpolated
- (5) Counter connection lost 7-1 to 7-31. Data interpolated
- (6) Counter connection lost 7-1 to 7-31. Data interpolated
- (7) Bridge Street closed by NJDOT 8-28 to 8-31
- (8) New counter installed 8-29 to 8-31. Data interpolated
- (9) New counter installed 8-29 to 8-30. Data interpolated
- (10) New counter installed 8-17. Data interpolated
- (11) New counter installed 8-30 to 8-31. Data interpolated
- (12) Power outage. 9-23 to 9-25 Data interpolated
- (13) Power outage. 9-23 to 9-24 data is low
- (14) Data interpolated 10-20 to 10-20

Table A-23 2024 Toll-Supported Bridge Volumes

Month	Lower Tenton	Calhoun Street	Washington Crossing ⁷	New Hope-Lambertville ¹	Centre Bridge ⁴	Ulenstown ⁶	Upper Black Eddy-Milford	Regetsville	Northampton Street	Riverton-Beverly ^{2,5}	Total
January	500,717	407,971	161,152	295,923	105,824	122,316	86,415	73,024	494,614	98,709	2,346,664
February	504,650	398,847	175,627	182,120	114,794	117,247	88,468	74,699	496,385	102,272	2,255,109
March	560,306	522,942	196,988	160,820	132,252	130,883	102,318	85,723	554,577	117,804	2,564,613
April	560,928	510,183	206,891	181,476	136,946	120,945	103,020	88,776	546,907	122,680	2,578,752
May	580,406	549,280	223,447	192,304	151,519	119,896	115,940	97,159	562,538	136,104	2,728,593
June	574,489	541,172	220,716	192,338	150,473	97,406	115,350	95,134	553,824	134,683	2,675,585
July	579,649	549,600	220,063	202,374	149,326	136,554	117,634	99,283	568,492	139,050	2,762,025
August	567,905	557,423	212,938	202,452	145,407	191,701	144,316	96,166	560,818	136,746	2,815,872
September	551,001	535,050	203,885	205,845	148,646	187,279	138,612	88,775	532,056	128,088	2,719,237
October	560,336	560,839	218,961	111,563	165,780	200,208	147,130	95,783	560,670	137,555	2,758,825
November	520,113	519,391	199,204	123,395	145,634	182,915	133,874	87,327	528,962	120,472	2,561,287
December	519,417	522,682	193,521	135,438	142,889	171,635	120,580	84,815	543,184	120,011	2,554,172
Total	6,579,917	6,175,380	2,433,393	2,186,048	1,689,490	1,778,984	1,413,657	1,066,664	6,503,027	1,494,173	31,320,733

Notes:

- (1) Eastbound traffic detour 1/30 thru 12-31
- (2) Data interpolated from 2023 data 3/1 to 4/30
- (3) Data interpolated from 2023 data 1/1 to 6/30
- (4) Power outage, 4-3 to 4-5 Data interpolated
- (5) Data interpolated 5-17 to 5-23
- (6) Westbound traffic diverted from bridge due to storm damage
- (7) Data interpolated 10/16

Table A-24 - 2003 Toll Bridge Volumes

Class	Trenton-Morrisville		New Hope-Lambertville		Interstate 78		Easton-Phillipsburg		Portland-Columbia		Delaware Water Gap (I-80)		Milford-Montague		Total	
Passenger Car	5,768,483	1,414,641	6,541,760	5,011,429	1,082,374	8,057,439	1,229,834	29,105,960								
2-axle truck	145,020	39,377	199,840	154,235	27,528	143,521	21,418	730,939								
3-axle truck	60,411	21,936	102,434	62,981	9,415	87,427	5,139	349,743								
4-axle truck	46,618	7,097	115,586	41,555	5,795	52,233	2,145	271,029								
5-axle truck	165,587	26,497	1,891,300	259,050	28,508	1,108,058	10,626	3,489,626								
6-axle truck	1,404	799	30,728	3,841	226	19,127	119	56,244								
7-axle truck	122	42	1,101	205	5	981	41	2,497								
special permit	69	1	809	75	10	780	7	1,751								
Total	6,187,714	1,510,390	8,883,558	5,533,371	1,153,861	9,469,566	1,269,329	34,007,789								

Table A-26 - 2005 Toll Bridge Volumes

Class	Trenton-Morrisville		New Hope-Lambertville		Interstate 78		Easton-Phillipsburg		Portland-Columbia		Delaware Water Gap (I-80)		Milford-Montague		Total	
Passenger Car	6,588,111	1,700,215	7,226,070	5,690,754	1,217,782	8,493,107	1,300,872	32,216,911								
2-axle truck	172,109	50,979	231,076	173,094	29,958	161,724	23,234	842,174								
3-axle truck	74,247	26,248	99,176	64,105	10,874	95,818	5,244	375,712								
4-axle truck	55,136	7,052	119,102	42,727	6,780	63,106	1,887	295,790								
5-axle truck	185,618	26,682	1,922,988	263,496	34,076	1,120,941	10,014	3,563,815								
6-axle truck	1,876	718	38,604	5,826	705	20,884	99	68,712								
7-axle truck	132	48	1,420	252	12	1,246	24	3,134								
special permit	-	4	12	-	-	64	-	80								
Total	7,077,229	1,811,946	9,638,448	6,240,254	1,300,187	9,956,890	1,341,374	37,366,328								

Table A-27 - 2006 Toll Bridge Volumes

Class	Trenton-Morrisville		New Hope-Lambertville		Interstate 78		Easton-Phillipsburg		Portland-Columbia		Delaware Water Gap (I-80)		Milford-Montague		Total	
Passenger Car	6,805,085	1,720,641	7,605,954	5,702,051	1,221,400	8,590,643	1,303,872	32,949,646								
2-axle truck	181,550	56,265	236,629	168,505	30,743	162,397	24,278	860,367								
3-axle truck	78,038	31,139	104,217	64,531	10,287	95,676	5,228	389,116								
4-axle truck	58,329	6,938	127,958	48,881	8,645	63,265	1,946	315,962								
5-axle truck	194,518	26,910	1,943,206	250,482	34,464	1,124,054	9,380	3,583,014								
6-axle truck	1,769	757	41,381	6,699	589	19,712	78	70,985								
7-axle truck	136	52	1,485	177	13	1,376	18	3,257								
special permit	-	1	8	-	-	42	-	51								
Total	7,319,425	1,842,703	10,060,838	6,241,326	1,306,141	10,057,165	1,344,800	38,172,398								

Table A-29 - 2008 Toll Bridge Volumes

Class	Trenton-Morrisville		New Hope-Lambertville		Interstate 78		Easton-Phillipsburg		Portland-Columbia		Delaware Water Gap (I-80)		Milford-Montague		Total	
Passenger Car	6,107,545	1,758,949	7,559,187	5,925,210	1,274,654	8,290,964	1,265,773	32,182,282								
2-axle truck	175,125	55,234	230,345	159,893	29,250	153,827	26,692	830,366								
3-axle truck	85,360	24,051	103,599	61,563	12,887	92,137	4,486	384,083								
4-axle truck	65,417	6,669	116,043	60,317	8,791	62,497	1,569	321,303								
5-axle truck	171,432	25,391	1,831,467	215,992	32,306	1,090,089	8,917	3,375,594								
6-axle truck	1,776	749	49,371	3,055	295	24,637	129	80,012								
7-axle truck	33	23	1,379	71	12	1,036	8	2,562								
special permit	-	1	8	-	-	49	-	58								
Total	6,606,688	1,871,067	9,891,399	6,426,101	1,358,195	9,715,236	1,307,574	37,176,260								

Table A-30 - 2009 Toll Bridge Volumes

Class	Trenton-Morrisville	New Hope-Lambertville	Interstate 78	Easton-Phillipsburg	Portland-Columbia	Delaware Water Gap (I-80)	Milford-Montague	Total
Passenger Car	6,295,506	1,853,211	7,791,397	5,755,012	1,242,932	8,389,765	1,257,979	32,585,802
2-axle truck	168,865	57,087	216,745	146,489	28,857	146,366	22,466	786,875
3-axle truck	65,994	19,705	94,012	48,270	9,132	85,801	3,645	326,559
4-axle truck	49,557	5,645	105,485	54,877	9,403	49,796	1,475	276,238
5-axle truck	144,868	25,843	1,737,739	207,313	29,159	1,026,829	7,466	3,179,217
6-axle truck	1,531	540	45,027	2,424	255	20,928	93	70,798
7-axle truck	27	42	1,195	62	45	736	8	2,115
special permit	-	-	10	-	-	32	-	42
Total	6,726,348	1,962,073	9,991,610	6,214,447	1,319,783	9,720,253	1,293,132	37,227,646

Table A-31 - 2010 Toll Bridge Volumes

Class	Trenton-Morrisville		New Hope-Lambertville		Interstate 78		Easton-Phillipsburg		Portland-Columbia		Delaware Water Gap (I-80)		Milford-Montague		Total	
Passenger Car	7,371,984	1,821,912	7,991,887	5,804,769	1,325,985	8,286,185	1,273,766	33,876,488								
2-axle truck	193,415	55,412	212,663	149,537	29,753	150,526	22,285	813,591								
3-axle truck	72,859	19,344	98,774	47,222	11,088	90,065	3,223	342,575								
4-axle truck	57,380	7,372	124,014	36,986	11,769	51,605	1,554	290,680								
5-axle truck	160,172	25,637	1,793,766	184,522	32,033	1,018,100	6,889	3,221,119								
6-axle truck	1,697	589	47,625	2,379	331	26,319	83	79,023								
7-axle truck	30	45	2,722	45	11	856	8	3,717								
special permit	-	-	6	-	-	34	-	40								
Total	7,857,537	1,930,311	10,271,457	6,225,460	1,410,970	9,623,690	1,307,808	38,627,233								

Table A-32 - 2011 Toll Bridge Volumes

Class	Trenton-Morrisville	New Hope-Lambertville	Interstate 78	Easton-Phillipsburg	Portland-Columbia	Delaware Water Gap (I-80)	Milford-Montague	Total
Passenger Car	7,297,867	1,808,633	8,279,687	5,346,229	1,287,540	7,919,943	1,214,086	33,153,985
2-axle truck	199,949	57,104	231,071	141,994	27,959	143,266	21,084	822,427
3-axle truck	69,632	18,764	114,082	46,092	11,676	92,400	3,511	356,157
4-axle truck	57,171	7,819	132,317	34,920	13,088	59,447	1,821	306,583
5-axle truck	185,598	26,562	1,882,116	159,328	31,001	964,013	6,921	3,255,539
6-axle truck	1,298	648	50,761	2,002	503	26,614	65	81,891
7-axle truck	47	41	5,210	55	11	1,585	7	6,956
special permit	-	-	10	3	-	25	1	39
Total	7,811,562	1,919,571	10,695,254	5,730,623	1,371,778	9,207,293	1,247,496	37,983,577

Table A-33 - 2012 Toll Bridge Volumes

Class	Trenton-Morrisville	New Hope-Lambertville	Interstate 78	Easton-Phillipsburg	Portland-Columbia	Delaware Water Gap (I-80)	Milford-Montague	Total
Passenger Car	7,423,733	1,772,789	8,516,402	5,008,615	1,212,285	7,811,528	1,178,289	32,923,641
2-axle truck	202,073	56,313	237,075	134,725	26,370	140,092	20,052	816,700
3-axle truck	64,620	18,497	124,013	39,826	14,919	90,847	3,314	356,036
4-axle truck	59,455	8,279	136,607	31,832	9,931	62,679	1,828	310,611
5-axle truck	182,376	28,552	1,968,650	129,756	29,726	981,139	7,051	3,327,250
6-axle truck	1,958	549	57,156	1,432	692	27,984	65	89,836
7-axle truck	35	47	6,161	41	-	1,570	16	7,870
special permit	-	-	6	3	-	12	-	21
Total	7,934,250	1,885,026	11,046,070	5,346,230	1,293,923	9,115,851	1,210,615	37,831,965

Table A-34 - 2013 Toll Bridge Volumes

Class	Trenton-Morrisville	New Hope-Lambertville	Interstate 78	Easton-Phillipsburg	Portland-Columbia	Delaware Water Gap (I-80)	Milford-Montague	Total
Passenger Car	7,470,065	1,814,421	8,428,174	4,794,140	1,119,966	7,884,760	1,209,411	32,720,937
2-axle truck	212,161	61,816	249,998	132,598	25,120	144,228	21,446	847,367
3-axle truck	80,413	18,863	138,341	40,400	11,067	86,797	4,075	379,956
4-axle truck	70,723	8,328	156,674	38,460	11,084	69,827	1,926	357,022
5-axle truck	185,706	29,138	2,034,255	127,619	25,886	1,004,042	7,168	3,413,814
6-axle truck	1,847	562	66,916	1,499	272	31,819	69	102,984
7-axle truck	47	50	8,278	34	1	1,945	9	10,364
special permit	-	-	4	-	-	23	-	27
Total	8,020,962	1,933,178	11,082,640	5,134,750	1,193,396	9,223,441	1,244,104	37,832,471

Table A-35 - 2014 Toll Bridge Volumes

Class	Trenton-Morrisville		New Hope-Lambertville		Interstate 78		Easton-Phillipsburg		Portland-Columbia		Delaware Water Gap (I-80)		Milford-Montague		Total	
Passenger Car	7,548,671	1,841,656	8,635,506	4,632,064	1,112,912	7,857,877	1,227,131	32,855,817								
2-axle truck	221,314	58,705	257,506	124,212	25,392	145,374	23,744	856,247								
3-axle truck	82,788	19,042	138,758	33,180	13,410	85,446	3,255	375,879								
4-axle truck	84,678	8,306	179,539	30,567	9,432	73,267	1,678	387,467								
5-axle truck	187,757	31,532	2,095,950	106,925	28,828	1,003,255	6,995	3,461,242								
6-axle truck	1,724	664	67,456	1,138	234	28,559	78	99,853								
7-axle truck	93	48	8,209	26	2	1,995	5	10,378								
special permit	-	-	-	-	-	18	-	18								
Total	8,127,025	1,959,953	11,382,924	4,928,112	1,190,210	9,195,791	1,262,886	38,046,901								

Table A-36 - 2015 Toll Bridge Volumes

Class	Trenton-Morrisville		New Hope-Lambertville		Interstate 78		Easton-Phillipsburg		Portland-Columbia		Delaware Water Gap (I-80)		Milford-Montague		Total	
Passenger Car	8,038,843	1,844,341	8,871,099	4,918,925	1,145,772	8,119,795	1,279,570	34,218,345								
2-axle truck	227,189	58,188	267,863	128,646	30,307	149,928	26,109	888,230								
3-axle truck	84,844	18,851	148,869	35,904	14,105	86,845	3,634	393,052								
4-axle truck	89,944	8,907	194,941	33,621	22,181	93,206	1,752	444,552								
5-axle truck	185,240	32,369	2,177,626	114,555	32,311	1,037,847	7,649	3,587,597								
6-axle truck	1,363	858	68,988	1,102	441	28,995	147	101,894								
7-axle truck	116	60	7,725	34	65	1,787	17	9,804								
special permit	-	1	4	1	-	7	-	13								
Total	8,627,539	1,963,575	11,737,115	5,232,788	1,245,182	9,518,410	1,318,878	39,643,487								

Table A-38 - 2017 Toll Bridge Volumes

Class	Trenton-Morrisville		New Hope-Lambertville		Interstate 78		Easton-Phillipsburg		Portland-Columbia		Delaware Water Gap (I-80)		Milford-Montague		Total	
Passenger Car	8,792,379	1,851,362	8,960,571	5,052,071	1,182,950	8,340,246	1,272,963	35,452,542								
2-axle truck	178,084	43,800	302,155	84,107	18,402	190,428	17,630	834,606								
3-axle truck	117,937	20,706	195,795	37,038	9,232	121,285	3,944	505,937								
4-axle truck	105,696	8,507	217,754	31,129	27,739	123,696	3,175	517,696								
5-axle truck	233,724	35,319	2,270,796	127,787	34,608	1,002,276	9,206	3,713,716								
6-axle truck	2,113	1,090	72,822	1,351	458	32,774	100	110,708								
7-axle truck	206	40	3,260	37	17	852	19	4,431								
special permit	-	-	1	-	-	-	-	1								
Total	9,430,139	1,960,824	12,023,154	5,333,520	1,273,406	9,811,557	1,307,037	41,139,637								

Table A-39 - 2018 Toll Bridge Volumes

Class	Trenton-Morrisville		New Hope-Lambertville		Interstate 78		Easton-Phillipsburg		Portland-Columbia		Delaware Water Gap (I-80)		Milford-Montague		Total	
Passenger Car	8,666,684	1,814,580	8,547,937	5,061,475	1,194,251	8,090,093	1,246,711	34,621,731								
2-axle truck	188,743	48,750	289,230	102,681	20,224	200,331	18,852	868,811								
3-axle truck	121,963	17,568	157,744	36,431	8,258	111,971	3,972	457,907								
4-axle truck	90,330	10,433	232,953	32,661	36,793	103,545	2,460	509,175								
5-axle truck	247,458	35,519	2,286,670	128,918	36,399	1,022,806	9,991	3,767,761								
6-axle truck	2,237	1,312	75,832	1,257	541	33,759	139	115,077								
7-axle truck	216	52	2,913	46	23	1,352	9	4,611								
special permit	-	-	-	-	-	-	-	-								
Total	9,317,631	1,928,214	11,593,279	5,363,469	1,296,489	9,563,857	1,282,134	40,345,073								

Table A-40 - 2019 Toll Bridge Volumes

Class	Toll Bridge										Total
	Trenton-Morrisville	Scudder Falls ¹	New Hope-Lambertville	Interstate 78	Easton-Phillipsburg	Portland-Columbia	Delaware Water Gap (I-80)	Milford-Montague			
Passenger Car	9,020,765	3,755,095	1,797,330	8,604,157	5,061,537	1,219,644	8,086,043	1,215,298			38,759,869
2-axle truck	264,266	89,199	57,592	299,728	115,778	23,238	199,027	20,720			1,069,548
3-axle truck	111,137	20,146	13,373	155,643	41,056	9,194	86,906	5,005			442,460
4-axle truck	82,849	16,902	12,203	239,891	35,542	45,295	93,434	3,692			529,808
5-axle truck	270,288	100,048	38,426	2,371,213	121,652	40,568	1,105,723	11,166			4,059,084
6-axle truck	2,134	1,471	1,789	85,125	1,205	577	34,358	192			126,851
7-axle truck	232	263	30	1,513	49	32	1,408	6			3,533
special permit	-	-	-	-	-	-	-	-			-
Total	9,751,671	3,983,124	1,920,743	11,757,270	5,376,819	1,338,548	9,606,899	1,256,079			44,991,153

(1) The conversion of the Scudder Falls Bridge (I-295) from a toll-supported facility to a tolled facility began on July 14, 2019.

Table A-41 - 2020 Toll Bridge Volumes

Class	Toll Bridge										Total
	Trenton-Morrisville	Scudder Falls	New Hope-Lambertville	Interstate 78	Easton-Phillipsburg	Portland-Columbia	Delaware Water Gap (I-80)	Milford-Montague			
Passenger Car	6,555,750	4,902,761	1,191,055	6,328,369	3,966,048	1,028,804	6,722,245	1,121,187			31,816,219
2-axle truck	326,814	169,342	48,158	296,731	115,665	23,360	193,771	21,878			1,195,719
3-axle truck	105,403	42,697	14,108	135,606	35,583	8,407	62,502	4,036			408,342
4-axle truck	93,982	27,614	11,871	256,104	31,342	25,499	76,840	3,831			527,083
5-axle truck	310,184	183,657	37,237	2,426,564	115,438	37,332	1,113,832	10,692			4,234,936
6-axle truck	2,701	2,467	1,922	92,029	970	196	34,000	117			134,402
7-axle truck	190	462	35	1,297	49	7	759	8			2,807
special permit	-	-	-	-	-	-	-	-			-
Total	7,395,024	5,329,000	1,304,386	9,536,700	4,265,095	1,123,605	8,203,949	1,161,749			38,319,508

Table A-42 - 2021 Toll Bridge Volumes

Class	Trenton-Morrisville	Scudder Falls	New Hope-Lambertville	Interstate 78	Easton-Phillipsburg	Portland-Columbia	Delaware Water Gap (I-80)	Milford-Montague	Total
Passenger Car	6,945,708	5,763,196	1,355,336	7,736,341	4,376,912	1,061,878	7,520,295	1,154,954	35,914,620
2-axle truck	290,951	207,907	52,322	352,795	127,740	27,095	266,814	26,812	1,352,436
3-axle truck	138,927	51,626	14,942	158,175	38,004	9,850	78,708	3,831	494,063
4-axle truck	105,191	31,377	11,298	249,344	34,450	30,838	90,130	3,557	556,185
5-axle truck	337,187	157,024	38,193	2,593,758	131,456	40,667	1,135,604	11,250	4,445,139
6-axle truck	3,353	3,188	1,884	76,637	1,150	237	31,154	114	117,717
7-axle truck	269	440	33	2,461	172	19	587	1	3,982
special permit	-	-	-	-	-	-	-	-	-
Total	7,821,586	6,214,758	1,474,008	11,169,511	4,709,884	1,170,584	9,123,292	1,200,519	42,884,142

Table A-43 - 2022 Toll Bridge Volumes

Class	Trenton-Morrisville		Scudder Falls		New Hope-Lambertville		Interstate 78		Easton-Phillipsburg		Portland-Columbia		Delaware Water Gap (I-80)		Milford-Montague		Total	
Passenger Car	6,878,426	6,682,110	1,443,620	7,881,054	4,996,490	1,092,595	7,629,929	1,141,372	37,745,596									
2-axle truck	323,853	174,198	52,695	367,869	131,890	27,999	275,426	29,229	1,383,159									
3-axle truck	146,112	38,357	15,097	177,618	37,267	11,938	85,157	4,018	515,564									
4-axle truck	128,408	30,633	10,032	242,083	39,784	45,572	88,644	3,181	588,337									
5-axle truck	315,298	142,133	41,273	2,585,047	151,827	45,073	1,138,478	8,367	4,427,496									
6-axle truck	3,401	2,060	2,537	58,508	1,039	353	29,575	131	97,604									
7-axle truck	175	387	44	1,363	224	19	862	3	3,077									
special permit	-	-	-	-	-	-	-	-	-									
Total	7,795,673	7,069,878	1,565,298	11,313,542	5,358,521	1,223,549	9,248,071	1,186,301	44,760,833									

**Appendix B:
2024 Toll Bridge Volume and Revenues
Projection Summary Worksheets
DRJTBC Toll Bridges**



Table B-1: Trenton-Morrisville Toll Bridge Volume and Revenue Projections

Class	2024 Volume (Leap Year)	% Growth from 2024 to 2025	2025 Base Projected Volume	Development / Construction Adjustment	2025 Projected Volume
Passenger	7,375,839	3.30%	7,627,810	123,372	7,751,182
2-Axle Trucks	275,906	1.76%	280,839	0	280,839
3-Axle Trucks	136,864	-12.73%	121,413	0	121,413
4-Axle Trucks	112,576	-24.10%	90,716	0	90,716
5-Axle Trucks	319,227	0.18%	319,801	64,236	384,037
6-Axle Trucks	8,900	23.09%	11,572	0	11,572
7-Axle Trucks	2,376	29.95%	3,392	0	3,392
Total	8,231,688	2.65%	8,455,543	187,608	8,643,151

Class	2024 Volume (Leap Year)	2024 Assessed Tolls	2025 Projected Volume	2025 Projected Assessed Tolls	% Change from 2024
Passenger	7,375,839	\$12,885,555.25	7,751,182	\$13,541,277.67	5.09%
2-Axle Trucks	275,906	\$2,519,714.00	280,839	\$2,564,774.86	1.79%
3-Axle Trucks	136,864	\$1,872,633.00	121,413	\$1,661,225.67	-11.29%
4-Axle Trucks	112,576	\$2,061,128.00	90,716	\$1,660,882.19	-19.42%
5-Axle Trucks	319,227	\$7,297,382.50	384,037	\$8,778,909.31	20.30%
6-Axle Trucks	8,900	\$243,564.00	11,572	\$316,687.93	30.02%
7-Axle Trucks	2,376	\$75,841.50	3,392	\$108,272.03	42.76%
Total	8,231,688	\$26,955,818.25	8,643,151	\$28,632,029.66	6.22%

Table B-2: Scudder Falls Toll Bridge Volume and Revenue Projections

Class	2024 Volume (Leap Year)	% Growth from 2024 to 2025	2025 Base Projected Volume	Development / Construction Adjustment	2025 Projected Volume
Passenger	7,628,558	4.24%	7,966,232	52,608	8,018,840
2-Axle Trucks	205,680	-1.05%	203,540	0	203,540
3-Axle Trucks	37,190	-3.09%	36,076	0	36,076
4-Axle Trucks	27,346	-2.02%	26,805	0	26,805
5-Axle Trucks	137,771	-1.60%	135,603	0	135,603
6-Axle Trucks	2,246	3.73%	2,333	0	2,333
7-Axle Trucks	241	8.02%	262	0	262
Total	8,039,032	3.96%	8,370,851	52,608	8,423,459

Class	2024 Volume (Leap Year)	2024 Assessed Tolls	2025 Projected Volume	2025 Projected Assessed Tolls	% Change from 2024
Passenger	7,628,558	\$12,361,484.81	8,018,840	\$12,993,906.42	5.12%
2-Axle Trucks	205,680	\$1,869,418.30	203,540	\$1,849,967.91	-1.04%
3-Axle Trucks	37,190	\$506,115.00	36,076	\$490,954.69	-3.00%
4-Axle Trucks	27,346	\$499,792.00	26,805	\$489,904.37	-1.98%
5-Axle Trucks	137,771	\$3,140,695.00	135,603	\$3,091,272.21	-1.57%
6-Axle Trucks	2,246	\$61,284.00	2,333	\$63,657.86	3.87%
7-Axle Trucks	241	\$8,323.00	262	\$9,048.24	8.71%
Total	8,039,032	\$18,447,112.11	8,423,459	\$18,988,711.70	2.94%

Table B-3: New Hope-Lambertville Toll Bridge Volume and Revenue Projections

Class	2024 Volume (Leap Year)	% Growth from 2024 to 2025	2025 Base Projected Volume	Development / Construction Adjustment	2025 Projected Volume
Passenger	1,555,092	0.59%	1,564,394	34,997	1,599,391
2-Axle Trucks	68,438	12.46%	78,178	0	78,178
3-Axle Trucks	14,116	2.97%	14,548	1,476	16,024
4-Axle Trucks	10,193	0.25%	10,219	0	10,219
5-Axle Trucks	45,618	2.76%	46,912	0	46,912
6-Axle Trucks	3,656	2.06%	3,733	0	3,733
7-Axle Trucks	42	-7.69%	39	0	39
Total	1,697,155	1.21%	1,718,023	36,473	1,754,496

Class	2024 Volume (Leap Year)	2024 Assessed Tolls	2025 Projected Volume	2025 Projected Assessed Tolls	% Change from 2024
Passenger	1,555,092	\$2,496,617.42	1,599,391	\$2,567,737.10	2.85%
2-Axle Trucks	68,438	\$622,721.00	78,178	\$711,345.77	14.23%
3-Axle Trucks	14,116	\$192,264.00	16,024	\$218,251.51	13.52%
4-Axle Trucks	10,193	\$186,844.00	10,219	\$187,320.60	0.26%
5-Axle Trucks	45,618	\$1,037,120.00	46,912	\$1,066,538.94	2.84%
6-Axle Trucks	3,656	\$99,300.00	3,733	\$101,391.38	2.11%
7-Axle Trucks	42	\$1,351.00	39	\$1,254.50	-7.14%
Total	1,697,155	\$4,636,217.42	1,754,496	\$4,853,839.80	4.69%

Table B-4: Interstate 78 Toll Bridge Volume and Revenue Projections

Class	2024 Volume (Leap Year)	% Growth from 2024 to 2025	2025 Base Projected Volume	Development / Construction Adjustment	2025 Projected Volume
Passenger	7,835,620	1.04%	7,917,850	0	7,917,850
2-Axle Trucks	365,452	2.18%	373,594	0	373,594
3-Axle Trucks	159,972	-14.31%	139,943	0	139,943
4-Axle Trucks	222,073	5.36%	234,655	0	234,655
5-Axle Trucks	2,555,243	0.53%	2,568,865	0	2,568,865
6-Axle Trucks	59,180	1.96%	60,361	0	60,361
7-Axle Trucks	1,648	30.49%	2,371	0	2,371
Total	11,199,188	0.87%	11,297,639	0	11,297,639

Class	2024 Volume (Leap Year)	2024 Assessed Tolls	2025 Projected Volume	2025 Projected Assessed Tolls	% Change from 2024
Passenger	7,835,620	\$14,112,122.10	7,917,850	\$14,260,213.04	1.05%
2-Axle Trucks	365,452	\$3,350,743.00	373,594	\$3,425,405.30	2.23%
3-Axle Trucks	159,972	\$2,188,452.00	139,943	\$1,914,450.91	-12.52%
4-Axle Trucks	222,073	\$4,055,130.00	234,655	\$4,284,860.57	5.67%
5-Axle Trucks	2,555,243	\$58,159,405.00	2,568,865	\$58,469,452.77	0.53%
6-Axle Trucks	59,180	\$1,605,015.00	60,361	\$1,637,044.78	2.00%
7-Axle Trucks	1,648	\$55,665.00	2,371	\$80,136.34	43.96%
Total	11,199,188	\$83,526,532.10	11,297,639	\$84,071,563.71	0.65%

Table B-5: Easton-Phillipsburg Toll Bridge Volume and Revenue Projections

Class	2024 Volume (Leap Year)	% Growth from 2024 to 2025	2025 Base Projected Volume	Development / Construction Adjustment	2025 Projected Volume
Passenger	4,937,936	1.33%	5,004,681	0	5,004,681
2-Axle Trucks	142,940	0.96%	144,320	0	144,320
3-Axle Trucks	39,271	9.11%	43,208	0	43,208
4-Axle Trucks	34,214	-9.84%	31,149	0	31,149
5-Axle Trucks	178,137	8.19%	194,018	0	194,018
6-Axle Trucks	1,929	22.62%	2,493	0	2,493
7-Axle Trucks	41	-70.83%	24	0	24
Total	5,334,468	1.58%	5,419,893	0	5,419,893

Class	2024 Volume (Leap Year)	2024 Assessed Tolls	2025 Projected Volume	2025 Projected Assessed Tolls	% Change from 2024
Passenger	4,937,936	\$8,449,668.24	5,004,681	\$8,563,880.55	1.35%
2-Axle Trucks	142,940	\$1,308,465.00	144,320	\$1,321,097.46	0.97%
3-Axle Trucks	39,271	\$540,492.00	43,208	\$594,677.45	10.03%
4-Axle Trucks	34,214	\$625,206.00	31,149	\$569,198.04	-8.96%
5-Axle Trucks	178,137	\$4,066,877.50	194,018	\$4,429,441.58	8.92%
6-Axle Trucks	1,929	\$52,644.00	2,493	\$68,036.03	29.24%
7-Axle Trucks	41	\$1,319.50	24	\$772.39	-41.46%
Total	5,334,468	\$15,044,672.24	5,419,893	\$15,547,103.50	3.34%

Table B-6: Portland-Columbia Toll Bridge Volume and Revenue Projections

Class	2024 Volume (Leap Year)	% Growth from 2024 to 2025	2025 Base Projected Volume	Development / Construction Adjustment	2025 Projected Volume
Passenger	1,166,581	1.21%	1,180,811	0	1,180,811
2-Axle Trucks	37,036	7.68%	40,119	0	40,119
3-Axle Trucks	13,736	0.05%	13,743	0	13,743
4-Axle Trucks	46,154	-4.15%	44,314	0	44,314
5-Axle Trucks	48,267	2.53%	49,520	0	49,520
6-Axle Trucks	400	10.71%	448	0	448
7-Axle Trucks	12	-20.00%	10	0	10
Total	1,312,186	1.26%	1,328,965	0	1,328,965

Class	2024 Volume (Leap Year)	2024 Assessed Tolls	2025 Projected Volume	2025 Projected Assessed Tolls	% Change from 2024
Passenger	1,166,581	\$1,965,208.89	1,180,811	\$1,989,180.57	1.22%
2-Axle Trucks	37,036	\$337,108.00	40,119	\$365,169.99	8.32%
3-Axle Trucks	13,736	\$188,121.00	13,743	\$188,216.88	0.05%
4-Axle Trucks	46,154	\$844,748.00	44,314	\$811,070.82	-3.99%
5-Axle Trucks	48,267	\$1,098,082.50	49,520	\$1,126,588.48	2.60%
6-Axle Trucks	400	\$10,971.00	448	\$12,287.53	12.00%
7-Axle Trucks	12	\$385.00	10	\$320.83	-16.67%
Total	1,312,186	\$4,444,624.39	1,328,965	\$4,492,835.10	1.08%

Table B-7: Delaware Water Gap (I-80) Toll Bridge Volume and Revenue Projections

Class	2024 Volume (Leap Year)	% Growth from 2024 to 2025	2025 Base Projected Volume	Development / Construction Adjustment	2025 Projected Volume
Passenger	8,050,287	3.12%	8,309,421	0	8,309,421
2-Axle Trucks	283,667	-3.20%	274,869	0	274,869
3-Axle Trucks	87,610	1.12%	88,600	0	88,600
4-Axle Trucks	72,583	-4.02%	69,781	0	69,781
5-Axle Trucks	1,208,482	1.11%	1,222,077	0	1,222,077
6-Axle Trucks	29,314	1.31%	29,703	0	29,703
7-Axle Trucks	1,047	6.85%	1,124	0	1,124
Total	9,732,990	2.63%	9,995,575	0	9,995,575

Class	2024 Volume (Leap Year)	2024 Assessed Tolls	2025 Projected Volume	2025 Projected Assessed Tolls	% Change from 2024
Passenger	8,050,287	\$14,596,064.50	8,309,421	\$15,065,903.23	3.22%
2-Axle Trucks	283,667	\$2,601,479.00	274,869	\$2,520,793.52	-3.10%
3-Axle Trucks	87,610	\$1,198,498.50	88,600	\$1,212,041.62	1.13%
4-Axle Trucks	72,583	\$1,328,222.00	69,781	\$1,276,947.23	-3.86%
5-Axle Trucks	1,208,482	\$27,542,802.50	1,222,077	\$27,852,649.41	1.12%
6-Axle Trucks	29,314	\$795,288.00	29,703	\$805,841.56	1.33%
7-Axle Trucks	1,047	\$37,268.00	1,124	\$40,008.82	7.35%
Total	9,732,990	\$48,099,622.50	9,995,575	\$48,774,185.39	1.40%

Table B-8: Milford-Montague Toll Bridge Volume and Revenue Projections

Class	2024 Volume (Leap Year)	% Growth from 2024 to 2025	2025 Base Projected Volume	Development / Construction Adjustment	2025 Projected Volume
Passenger	1,169,586	0.46%	1,174,974	0	1,174,974
2-Axle Trucks	32,996	5.88%	35,057	0	35,057
3-Axle Trucks	3,833	-10.75%	3,461	0	3,461
4-Axle Trucks	2,386	-23.37%	1,934	0	1,934
5-Axle Trucks	7,689	0.13%	7,699	0	7,699
6-Axle Trucks	385	7.00%	414	0	414
7-Axle Trucks	9	30.77%	13	0	13
Total	1,216,884	0.54%	1,223,552	0	1,223,552

Class	2024 Volume (Leap Year)	2024 Assessed Tolls	2025 Projected Volume	2025 Projected Assessed Tolls	% Change from 2024
Passenger	1,169,586	\$1,986,223.89	1,174,974	\$1,995,373.94	0.46%
2-Axle Trucks	32,996	\$301,530.00	35,057	\$320,364.21	6.25%
3-Axle Trucks	3,833	\$52,914.00	3,461	\$47,778.59	-9.71%
4-Axle Trucks	2,386	\$44,098.00	1,934	\$35,744.15	-18.94%
5-Axle Trucks	7,689	\$175,485.00	7,699	\$175,713.22	0.13%
6-Axle Trucks	385	\$10,467.00	414	\$11,255.43	7.53%
7-Axle Trucks	9	\$304.50	13	\$439.80	44.43%
Total	1,216,884	\$2,571,022.39	1,223,552	\$2,586,669.34	0.61%

**Appendix C:
Toll Bridge Revenue and Expenditure
Projection Summary Worksheets
DRJTBC Toll Bridges**



Table C-1: Actual Revenue and Expenditures for 2024

Region	Bridge	2024 Volume		2024 Revenue
Southern	Trenton-Morrisville	8,231,688	\$	26,955,818.25
Southern	Scudder Falls	8,039,032	\$	18,447,112.11
Southern	New Hope-Lambertville	1,697,155	\$	4,636,217.42
Central	Interstate 78	11,199,188	\$	83,526,532.10
Central	Easton-Phillipsburg	5,334,468	\$	15,044,672.24
Northern	Portland-Columbia	1,312,186	\$	4,444,624.39
Northern	Delaware Water Gap	9,732,990	\$	48,099,622.50
Northern	Milford-Montague	<u>1,216,884</u>	\$	<u>2,571,022.39</u>
	Total	46,763,591	\$	203,725,621.40
	2024 Assessed Tolls		\$	203,725,621.40
	4.4% Uncollectable Toll Revenue		\$	(8,982,788.66)
	2024 Net Toll Revenue		\$	194,742,832.74
	E-ZPass Service Fee		\$	3,020,946.93
	Interest Income		\$	12,405,908.31
	Other Income		\$	<u>704,156.38</u>
	1. Total Revenue - 2024		\$	210,873,844.36
	2. Operating Expenses - 2024		\$	<u>84,050,900.40</u>
	3. Net Revenue	(Line 1 - Line 2)	\$	126,822,943.96
	4. Annual Debt Service		\$	49,641,519.00
	5. 130% of Annual Debt Service		\$	64,533,974.70
	6. Calculated Debt Service Coverage Ratio	(Line 3 / Line 4)		2.55

Therefore, the requirement that the Net Revenue for the preceding fiscal year be greater than 130% of the Annual Debt Service is met, satisfying the requirements of the current Commission's Bond Indenture, Section 501(a)(1). The Commission's resolution to maintain a minimum Debt Service Coverage Ratio of 2.0 is met.

Table C-2: Projected Revenue and Expenditures for 2025

Region	Bridge	2025 Volume		2025 Revenue
Southern	Trenton-Morrisville	8,643,151	\$	28,632,029.66
Southern	Scudder Falls	8,423,459	\$	18,988,711.70
Southern	New Hope-Lambertville	1,754,496	\$	4,853,839.80
Central	Interstate 78	11,297,639	\$	84,071,563.71
Central	Easton-Phillipsburg	5,419,893	\$	15,547,103.50
Northern	Portland-Columbia	1,328,965	\$	4,492,835.10
Northern	Delaware Water Gap	9,995,575	\$	48,774,185.39
Northern	Milford-Montague	<u>1,223,552</u>	\$	<u>2,586,669.34</u>
	Total	48,086,730	\$	207,946,938.20
	2025 Assessed Tolls		\$	207,946,938.20
	7.0% Estimated Uncollectable Toll Revenue		\$	(14,556,285.68)
	2025 Net Toll Revenue		\$	193,390,652.52
	E-ZPass Service Fee	(2025 Budgeted)	\$	3,508,370.00
	Interest Income	(2025 Budgeted)	\$	11,370,630.00
	Other Income	(2025 Budgeted)	\$	242,000.00
	1. Total Projected Revenue - 2025		\$	208,511,652.52
	2. Operating Expenses	(2025 Budgeted)	\$	<u>105,858,460.00</u>
	3. Net Revenue	(Line 1 - Line 2)	\$	102,653,192.52
	4. Annual Debt Service	(2025 Budgeted)	\$	48,594,469.00
	5. 130% of Annual Debt Service		\$	63,172,809.70
	6. Calculated Debt Service Coverage Ratio	(Line 3 / Line 4)		2.11
<p>Therefore, the requirement that the Net Revenue for the preceding fiscal year be greater than 130% of the Annual Debt Service is met, satisfying the requirements of the current Commission's Bond Indenture, Section 501(a)(1). The Commission's resolution to maintain a minimum Debt Service Coverage Ratio of 2.0 is met.</p>				