

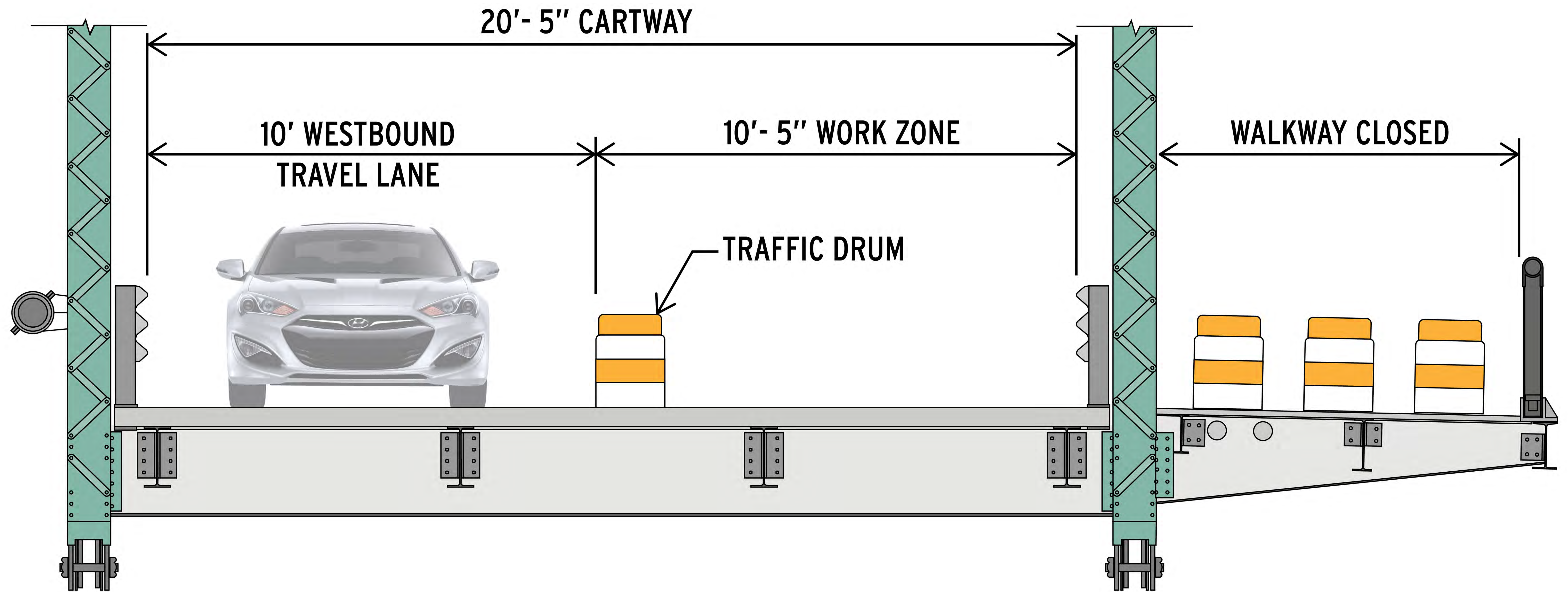


Delaware River
Joint Toll Bridge
Commission

STAGING

MAINTENANCE & PROTECTION OF TRAFFIC

Eastbound Traffic Detoured January - April 2024



STAGE 1 - PORTION OF BRIDGE CLOSED
(LOOKING EAST)

WALKWAY TO REMAIN CLOSED DURING STAGE 1,
SHUTTLE SERVICE WILL BE PROVIDED FOR PEDESTRIANS

PUBLIC OPEN HOUSE MEETINGS

NEW HOPE - LAMBERTVILLE TOLL-SUPPORTED BRIDGE REHABILITATION

Borough of New Hope, PA & City of Lambertville, NJ | Contract C-694A, Capital Project 1430A

Scan For Project
Information

