

DELAWARE RIVER
JOINT TOLL BRIDGE COMMISSION
MINUTES
MEETING OF FEBRUARY 25, 2008

DELAWARE RIVER JOINT TOLL BRIDGE COMMISSION

MEMBERS OF THE COMMISSION

NEW JERSEY

HONORABLE DAVID R. DEGEROLAMO
Chairman

HONORABLE DONALD HART

HONORABLE HARRY ZIKAS, JR

HONORABLE WILLIAM J. HODAS
Secretary-Treasurer

HONORABLE THOMAS SUMNERS, JR

PENNSYLVANIA

HONORABLE GAETAN J. ALFANO
Vice Chairman

HONORABLE MELISSA HELLER

HONORABLE J. ALAN FOWLER

HONORABLE BERNARD GRIGGS, JR.

HONORABLE JOHN PREVOZNIK

Revised 10/07

DELAWARE RIVER JOINT TOLL BRIDGE COMMISSION

STANDING COMMITTEES

FINANCE, INSURANCE, MANAGEMENT OPERATIONS

PENNSYLVANIA: Alfano, Fowler

NEW JERSEY: Hart*, Zikas

HUMAN RESOURCES, AFFIRMATIVE ACTION AND TRAINING AND SAFETY

PENNSYLVANIA: Griggs, Fowler

NEW JERSEY: Hodas*, Sumners

PROJECTS, PROPERTY AND EQUIPMENT

PENNSYLVANIA: Griggs*, Alfano

NEW JERSEY: Hart, Hodas

CONTRACTS SUB-COMMITTEE

PENNSYLVANIA: Griggs*, Alfano

NEW JERSEY: DeGerolamo, Hodas

CAI COMMITTEE

PENNSYLVANIA: Alfano, Fowler

NEW JERSEY: DeGerolamo*, Hart

AUDIT COMMITTEE

PENNSYLVANIA: Prevoznik*, Heller

NEW JERSEY: DeGerolamo,

PROFESSIONAL SERVICES COMMITTEE

PENNSYLVANIA: Alfano*, Heller

NEW JERSEY: Sumners, Zikas

*Chairman of Committee

DELAWARE RIVER JOINT TOLL BRIDGE COMMISSION
RECAPITULATION OF COMMITTEE MEMBERSHIP
2008

DeGerolamo	(1)	Ex-Officio of all Committees
Alfano	(1)	Finance, Insurance, Management Operations Committee
	(2)	Projects, Property and Equipment Committee
	(3)	Contracts Sub-Committee
	(4)	Professional Services Committee
	(5)	CAI Committee
Fowler	(1)	Finance, Insurance, Management Operations Committee
	(2)	Human Resources, Affirmative Action and Training and Safety Committee
	(3)	CAI Committee
Griggs	(1)	Human Resources, Affirmative Action and Training and Safety Committee
	(2)	Projects, Property and Equipment Committee (Chairman)
	(3)	Contracts Sub-Committee (Chairman)
Hart	(1)	Finance, Insurance Management and Operations Committee (Chairman)
	(2)	Projects, Property and Equipment Committee
	(3)	CAI Committee
Heller	(1)	Professional Services Committee
	(2)	Audit Committee
Hodas	(1)	Human Resources, Affirmative Action and Training and Safety Committee (Chairman)
	(2)	Projects, Property and Equipment Committee
	(3)	Contracts Sub-Committee
Prevoznik	(1)	Audit Committee (Chairman)
Sumners	(1)	Professional Services Committee
	(2)	Human Resources
Zikas	(1)	Finance, Insurance, Management Operations Committee
	(2)	Professional Services

DELAWARE RIVER JOINT TOLL BRIDGE COMMISSION

PROFESSIONAL ASSOCIATES

CONSULTING ENGINEERS

TRANSSYSTEM/LICHTENSTEIN CONSULTING ENGINEERS
Paramus, New Jersey

LEGAL COUNSEL

FOX ROTHSCHILD, LLP
Philadelphia, Pennsylvania

FLORIO, PERRUCCI, STEINHARDT & FADER
Phillipsburg, NJ

EMPLOYMENT COUNSEL

STRADLEY, RONON, STEVENS & YOUNG
Philadelphia, PA

WOLFF AND SAMSON
West Orange, NJ

AUDITOR

MERCADIEN
Princeton, New Jersey

FINANCIAL ADVISOR

VACANT

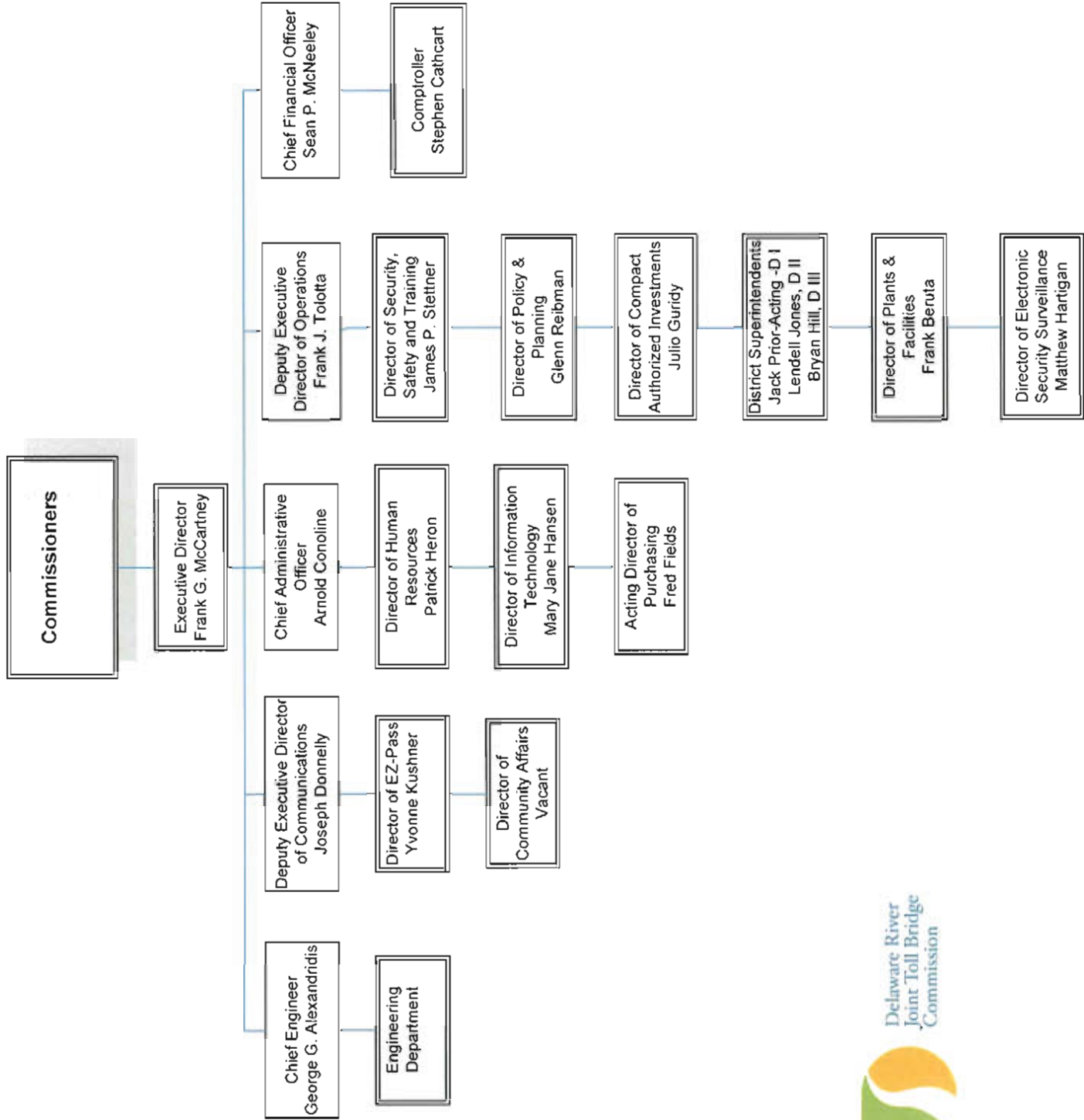
COMMUNICATIONS CONSULTANT

BELLEVUE COMMUNICATIONS
Philadelphia, PA

INVESTMENT MANAGEMENT

COMMERCE CAPITAL MARKETS
Philadelphia, PA

Revised 2008



DELAWARE RIVER JOINT TOLL BRIDGE COMMISSION

Meeting of February 25, 2008

INDEX TO MINUTES

	PAGE
1. Call to Order	1
2. Appearances.....	1 - 2
3. Roll Call.....	2
4. Welcoming Remarks of Chairman	2
5. Introduce any Comments from the Public	3
6. Executive Director's Report	3 - 4
7. Approval of Minutes for Meeting held January 28, 2008	4
8. Operations Report-Month of January 2008	4 - 5
9. Rejection of Bids-Five (5) LED Full-Color Lane Assignment Displays	5
10. Promotion of Toll Corporal to Toll Sergeant- Trenton-Morrisville Toll Bridge – Leo Plenski	5 - 6
11. Promotion of Toll Collector to Toll Corporal- Trenton-Morrisville Toll Bridge-David Haggerty	6
12. Appointment of Marvin Dovberg, Toll Collector- Trenton Morrisville Toll Bridge	6 - 7
13. Appointment of Gary Reading to Bridge Officer Position, Southern Division Toll Supported Bridges.....	7
14. Appointment of Bryan Culbertson to Bridge Officer Position- Southern Division Toll Supported Bridges.....	7 - 8
15. Appointment of Mark Leary to Bridge Officer Position- Southern Division Toll Supported Bridges.....	8

DELAWARE RIVER JOINT TOLL BRIDGE COMMISSION

Meeting of February 25, 2008

INDEX TO MINUTES

	PAGE
16. Appointment of Kevin Raike to Bridge Officer Position- Southern Division Toll Supported Bridges.....	9
17. Appointment of Sean McCarthy to Toll Collector Position- New Hope-Lambertville Toll Bridge.....	9 - 10
18. Appointment of Sandy Doran to Toll Collector Position- I-78 Toll Bridge	10
19. Appointment of Stacy Smith to Secretary II Position at Easton-Phillipsburg Toll Bridge	10 - 11
20. Acceptance of 2007 Annual Inspection Report Submitted by the General Engineering Consultant.....	11
21. Presentation by Transystem/Lichtenstein regarding the 2007 Annual Inspection Report	11
22. 2008 Capital Plan.....	11 - 12
23. I-78 Roadway Rehabilitation Design, Approval of Consultant Agreement Modification No. 6.....	12
24. I-78 Open Road Tolling (ORT) Lanes Design, Approval of Modification No. 4	12 - 13
25. Delaware Water Gap Toll Bridge Bearing Remediation and Deck Study	13
26. ETC System Spare Parts	14 - 15
27. GEDP-Sponsorship Agreement	15
28. Approval for Payment of Invoice; Florio, Perrucci, Steinhardt & Fader, New Jersey Legal Counsel	15 - 16
29. Approval for Payment of Invoice; Fox Rothschild, Pennsylvania Legal Counsel	16

DELAWARE RIVER JOINT TOLL BRIDGE COMMISSION

Meeting of February 25, 2008

INDEX TO MINUTES

	PAGE
30. Approval for Payment of Invoices; Wolff and Samson, NJ Labor Counsel	16 - 17
31. Introduce Any Comments From the Public	17
32. Scheduling of the March 2008 Meeting	17
33. Adjournment.....	17

DELAWARE RIVER JOINT TOLL BRIDGE COMMISSION

Meeting of February 25, 2008

CALL TO ORDER

The Regular Monthly Meeting of the Delaware River Joint Toll Bridge Commission was Called to Order at the Inn at Lambertville Station, 11 Bridge Street, Lambertville, New Jersey 08530 in the Riverside Room, on Monday, February 25, 2008 at 11:27 a.m., pursuant to notice properly forwarded to each member in compliance with the By-Laws. David DeGerolamo, Chairman, presided at this Meeting. The Commission met in Executive Session to discuss legal and personnel matters prior to this meeting.

APPEARANCES

COMMISSION MEMBERS:

Hon. Gaetan Alfano (Pennsylvania)
Hon. David DeGerolamo (New Jersey)
Hon. J. Alan Fowler (Pennsylvania)
Hon. Donald Hart (New Jersey)
Hon. Melissa Heller (Pennsylvania)
Hon. John Prevoznik (Pennsylvania)
Hon. Thomas Sumners, (New Jersey)
Hon. Harry Zikas, Jr. (New Jersey)
Hon. William Hodas (New Jersey)

COMMISSION MEMBERS ABSENT:

Hon. Bernard Griggs (Pennsylvania)

COMMISSION GENERAL COUNSEL:

Marcel Groen Fox Rothschild, Pennsylvania Legal Counsel
Levin Czubaroff, Fox Rothschild, Pennsylvania Legal Counsel
Mark Peck, Florio, Perrucci, Steinhardt and Fader (New Jersey Legal Counsel)

COMMISSION LABOR COUNSEL:

Jonathan Bloom, Stradley Ronon, Pennsylvania Labor Counsel
John Casey, Wolff and Samson, New Jersey Labor Counsel

GOVERNORS REPRESENTATIVES:

James Carey, New Jersey Governor's Office

DELAWARE RIVER JOINT TOLL BRIDGE COMMISSION

Meeting of February 25, 2008

REPRESENTING THE COMMISSION'S COMMUNICATIONS CONSULTANTS: BELLEVUE COMMUNICATIONS

Pete Peterson, Bellevue Communications

COMMISSION STAFF MEMBERS:

Frank G. McCartney, Executive Director
Frank J. Tolotta, Deputy Executive Director of Operations
George Alexandridis, Chief Engineer
Sean McNeeley, Chief Financial Officer
Stephen Cathcart, Comptroller
Patrick Heron, Director of Human Resources
Joseph Donnelly, Deputy Executive Director of Communications
Arnold Conoline, Chief Administrative Officer
Richard McClellan, Assistant Director of Community Affairs

OTHERS:

Mark Salimena , CDR
Dennis Enright, NW Financial
Phillip Norcross, Parker McCay
Marc Feller, Dilworth Paxson
Ron Giamario, Transystem Lichtenstien
Bill Clark, Transystem Lichtenstien
John Araneo, Chas H. Sells Inc
Richard Welsh, Wachovia
Kathy Diringer, NJDOT
Michael Haggerty, Stockton Borough
Ed Peers, HDR Engineering
Curt Yeske, Trenton Times

ROLL CALL

Frank G. McCartney, Executive Director, in his capacity as Secretary for this Meeting, called the Roll, and at the conclusion thereof, reported that there was a quorum present--there being four members present from Pennsylvania and five members present from New Jersey.

WELCOMING REMARKS OF CHAIRMAN

Chairman DeGerolamo welcomed those persons whose identities are set forth hereinabove under "Appearances".

DELAWARE RIVER JOINT TOLL BRIDGE COMMISSION

Meeting of February 25, 2008

INTRODUCE ANY COMMENTS FROM THE PUBLIC

Chairman DeGerolamo addressed the meeting and invited any comments from the Public or Press on items pertaining to today's Agenda.

EXECUTIVE DIRECTOR'S REPORT

2007 Annual Inspection Report – In a few minutes, we will have a brief presentation on the 2007 annual inspection report, which was completed by the Commission's General Engineering Consultant TranSystems / Lichtenstein. As Commissioners are aware, we conduct inspections of each of our bridges every two years, with our toll bridges being inspected in odd years and out toll-supported bridges being inspected in even years. This is consistent with federal guidelines.

As such, this year's report contains the findings of the 2007 inspections of the Commission's toll bridges, as well as additional inspections of some select toll-supported bridges.

The report, although showing that all of our bridges are safe, does highlight some ongoing capital improvement needs of the Commission. It also reinforces the need for the Commission's comprehensive capital improvement program. Which brings me to our 2008 capital budget.

2008 Capital Budget -- Today Commissioner's will be asked to vote on a \$150.7 million capital budget for 2008. The capital budget serves as a guideline for capital projects in the coming year and, I might add, is a requirement of our bond indentures. It is important to note that this is not an appropriation of funding, but more of a framework for capital expenditures in the coming year. Each individual project must also be approved separately by the Commission through votes on construction and engineering contract awards.

The Commission, through our \$950 million capital program, is continuing to make significant investments in our infrastructure to ensure safe and efficient travel for New Jersey and Pennsylvania residents across the Delaware River. By the year 2015, the Commission will have conducted rehabilitation or other significant improvement efforts on each of our twenty Delaware River crossings, improving safety, reducing congestion, and extending the life of these bridge structures. We take our commitment and responsibility to the travelling public very seriously.

This capital budget moves our capital program forward. There will be highlights during the presentation of the specific projects.

Milford-Montague Toll Bridge Rehabilitation -- In other capital project news, the work on the Milford-Montague Toll Bridge is proceeding on schedule. The Commission delivered presentations on the project on February 4 and February 19 in Milford and Montague, which I understand were very well received by local elected officials and the public.

The contractor has been able to mobilize very quickly and, as a result, the bridge will be limited to one-lane of traffic beginning March 10th, earlier than the previous projected closure date of April 1st. This lane will be closed until the summer moratorium on construction that will run from the Thursday before Memorial Day until after Labor Day. The summer moratorium, I

DELAWARE RIVER JOINT TOLL BRIDGE COMMISSION

Meeting of February 25, 2008

would like to remind Commissioners, was implemented to address community concerns about increased summer traffic over the bridge. It is another example of our ongoing commitment to work with local communities and the public to make accommodations and compromises.

I-78 – The Commission's rehabilitation of I-78 on the New Jersey side moved into a new stage this month. Effective February 18, the shoulders were eliminated and the lanes narrowed. Also, earlier this month, the Commission reduced the speed limit from 65 miles per hour to 50 miles per hour to help ensure the safety of the travelling public and our contractors. State police will begin a strict enforcement policy of the new speed limit this week.

In the coming months, we will continue drilling and slurry grouting. Slab stabilization activities will commence on March 3rd and full depth slab replacements will commence on March 17th.

Trenton Morrisville (Route 1) Toll Bridge Rehabilitation – I am pleased to report that work on the Route 1 Toll Bridge rehabilitation project is proceeding on schedule and on budget. We are on track to move to Phase 2 of the rehabilitation project in early April. We expect some traffic conditions to improve at that stage, as we will have completed work on the toll plaza replacement. In addition, the northbound lanes of Route 1 will have been rehabilitated, which will make for a much smoother ride and improved throughput on the bridge.

APPROVAL OF MINUTES

FOR COMMISSION MEETING HELD JANUARY 28, 2008

R: 1482-02-08 - ADM-01-02-08

Chairman DeGerolamo addressed the meeting and invited the introduction of a Resolution approving the Minutes of the Commission Meeting held January 28, 2008.

At the conclusion of the review, Commissioner Prevoznik and Commissioner Hart seconded the adoption of the following Resolution:

"RESOLVED, by the Delaware River Joint Toll Bridge Commission, at its Regular Meeting assembled this 25th day of February 2008, that the Minutes of the Commission Meeting held January 28, 2008, be and the same hereby are approved."

Chairman DeGerolamo invited questions on the Resolution. No further questions were presented and the Resolution was unanimously adopted.

OPERATIONS REPORT-MONTH OF JANUARY 2008

R: 1483-02-08 - ADM-02-02-08

Chairman DeGerolamo addressed the meeting and asked if there were any questions on any of the reports contained in the "Operations Report".

DELAWARE RIVER JOINT TOLL BRIDGE COMMISSION

Meeting of February 25, 2008

At the conclusion of the review, Commissioner Zikas moved and Commissioner Hodas seconded the adoption of the following Resolution:

"RESOLVED, by the Delaware River Joint Toll Bridge Commission, at it's Regular Meeting assembled this 25th day of February that the Commission, via this Resolution, acknowledges receipt, understanding and authorizes filing of the report entitled, 'Operations Report, Month of January 2008, as set forth in the Supplement to the Minutes of this Meeting."

Chairman DeGerolamo invited questions on the Resolution. No questions were presented and the Resolution was unanimously adopted.

REJECTION OF BIDS- FIVE (5) LED FULL-COLOR LANE ASSIGNMENT DISPLAYS

R: 1484-02-08- PURCH-01-02-08

Chairman DeGerolamo addressed the Meeting and asked the Commission Members if, after their review, there were any questions.

At the conclusion of the review, Commissioner Hart moved and Commissioner Alfano seconded the adoption of the following Resolution:

"RESOLVED, by the Delaware River Joint Toll Bridge Commission, at it's Regular Meeting assembled this 25th day of February 2008, that the Commission, via this Resolution, authorizes the Executive Director to reject all bids, in the best interest of the Commission."

Chairman DeGerolamo invited questions on the Resolution. No questions were presented and the Resolution was unanimously adopted.

PROMOTION OF TOLL CORPORAL TO TOLL SERGEANT-TRENTON MORRISVILLE TOLL BRIDGE - LEO PLENSKI

R:1485-01-08 – HR-01-02-08

Chairman DeGerolamo addressed the Meeting and asked the Commission Members if, after their review, there were any questions.

ALFANO RECUSED

Commissioner Alfano addressed the meeting and said:

"Madam Court Reporter, please note that I have to recuse myself from any vote involving Leo Plenski, and that I have not participated in any discussions involving the promotion of Leo Plenski and the reason is the potential conflict of interest. I understand Mr. Plenski is an elected official in Bristol Borough, and my law firm represents Bristol Borough with certain matters, so I'm recusing myself on that."

DELAWARE RIVER JOINT TOLL BRIDGE COMMISSION

Meeting of February 25, 2008

At the conclusion of the review Commissioner Hart moved and Commissioner Fowler seconded the adoption of the following Resolution:

"RESOLVED, by The Delaware River Joint Toll Bridge Commission, at it's Regular Meeting assembled this 25th day of February 2008, that the Commission, via this Resolution, approves the appointment of Toll Corporal Leo Plenski to the Toll Sergeant position in District I at the Trenton-Morrisville Toll Bridge with compensation fixed at \$56,946 per annum, which is the 4th step within the salary range for the Toll Sergeant position (\$49,194-\$62,790), pending satisfactory completion of the required personnel processing."

Chairman DeGerolamo invited questions on the Resolution. No questions were presented, and the Resolution was adopted.

PROMOTION OF TOLL COLLECTOR TO TOLL CORPORAL TRENTON MORRISVILLE TOLL BRIDGE- DAVID HAGGERTY

R:1486-02-08 – HR-02-02-08

Chairman DeGerolamo addressed the Meeting and asked the Commission Members if, after their review, there were any questions.

At the conclusion of the review Commissioner Sumners moved and Commissioner Hodas seconded the adoption of the following Resolution:

"RESOLVED, by The Delaware River Joint Toll Bridge Commission, at it's Regular Meeting assembled this 25th day of February 2008, that the Commission, via this Resolution, authorizes the appointment of Toll Collector David Haggerty to the Toll Corporal position in District I at the Trenton-Morrisville Toll Bridge with compensation fixed at \$46,852 per annum, which is within the salary range for the Toll Corporal position (\$42,500-\$54,240), pending satisfactory completion of the required personnel processing."

Chairman DeGerolamo invited questions on the Resolution. No questions were presented, and the Resolution was unanimously adopted.

APPOINTMENT OF MARVIN DOYBERG, TOLL COLLECTOR-TRENTON MORRISVILLE TOLL BRIDGE

R:1487-02-08 – HR-03-02-08

Chairman DeGerolamo addressed the Meeting and asked the Commission Members if, after their review, there were any questions.

At the conclusion of the review Commissioner Fowler moved and Commissioner Sumners seconded the adoption of the following Resolution:

DELAWARE RIVER JOINT TOLL BRIDGE COMMISSION

Meeting of February 25, 2008

"RESOLVED, by The Delaware River Joint Toll Bridge Commission, at it's Regular Meeting assembled this 25th day of February 2008, that the Commission, via this Resolution, authorizes the appointment of Marvin Dovberg to the position of Toll Collector at the Trenton-Morrisville Toll Bridge with compensation fixed at \$35,635 annum, which is the minimum step in range for the Toll Collector position (\$35,635 - \$45,481), pending satisfactory completion of the required personnel processing; and

"FURTHER RESOLVED, that the Commission authorizes the Executive Director to effect the employment of Marvin Dovberg to the Toll Collector position, pending satisfactory completion of the required personnel processing."

Chairman DeGerolamo invited questions on the Resolution, No questions were presented, and the Resolution was unanimously adopted.

APPOINTMENT OF GARY READING TO BRIDGE OFFICER POSITION, SOUTHERN DIVISION TOLL SUPPORTED BRIDGES

R: 1488-02-08 - HR-04-02-08

Chairman DeGerolamo addressed the Meeting and asked the Commission Members if, after their review, there were any questions.

At the conclusion of the review Commissioner Hodas moved and Commissioner Fowler seconded the adoption of the following Resolution:

"RESOLVED, by The Delaware River Joint Toll Bridge Commission, at it's Regular Meeting assembled this 25th day of February 2008, that the Commission, via this Resolution, authorizes the appointment of Gary Reading to the position of Bridge Officer in Southern Division with compensation fixed at \$32,321 per annum, which is the minimum step in range for the Bridge Officer position (\$32,321-\$41,247), pending satisfactory completion of the required personnel processing; and

"FURTHER RESOLVED, that the Commission authorizes the Executive Director to effect the employment of Gary Reading to the Bridge Officer position, pending satisfactory completion of the required personnel processing."

Chairman DeGerolamo invited questions on the Resolution, No questions were presented, and the Resolution was unanimously adopted.

APPOINTMENT OF BRYAN CULBERTSON TO BRIDGE OFFICER POSITION, SOUTHERN DIVISION TOLL SUPPORTED BRIDGES

R:1489-02-08 – HR-05-02-08

Chairman DeGerolamo addressed the Meeting and asked the Commission Members if, after their review, there were any questions.

DELAWARE RIVER JOINT TOLL BRIDGE COMMISSION

Meeting of February 25, 2008

At the conclusion of the review Commissioner Hart moved and Commissioner Alfano seconded the adoption of the following Resolution:

"RESOLVED, by The Delaware River Joint Toll Bridge Commission, at it's Regular Meeting assembled this 25th day of February 2008, that the Commission, via this Resolution, authorizes the appointment of Bryan Culbertson to the position of Bridge Officer in Southern Division with compensation fixed at \$32,321 per annum, which is the minimum step in range for the Bridge Officer position (\$32,321-\$41,247), pending satisfactory completion of the required personnel processing; and

"FURTHER RESOLVED, that the Commission authorizes the Executive Director to effect the employment of Bryan Culbertson to the Bridge Officer position, pending satisfactory completion of the required personnel processing."

Chairman DeGerolamo invited further questions on the Resolution, but no further questions were presented. The Resolution was unanimously adopted.

APPOINTMENT OF MARK LEARY TO BRIDGE OFFICER POSITION, SOUTHERN DIVISION TOLL SUPPORTED BRIDGES

R:1490-02-08 – HR-06-02-08

Chairman DeGerolamo addressed the Meeting and asked the Commission Members if, after their review, there were any questions.

At the conclusion of the review Commissioner Hart moved and Commissioner Sumners seconded the adoption of the following Resolution:

"RESOLVED, by The Delaware River Joint Toll Bridge Commission, at it's Regular Meeting assembled this 25th day of February 2008, that the Commission, via this Resolution, authorizes the appointment of Mark Leary to the position of Bridge Officer in Southern Division with compensation fixed at \$32,321 per annum, which is the minimum step in range for the Bridge Officer position (\$32,321-\$41,247), pending satisfactory completion of the required personnel processing; and

"FURTHER RESOLVED, that the Commission authorizes the Executive Director to effect the employment of Mark Leary to the Bridge Officer position, pending satisfactory completion of the required personnel processing."

Chairman DeGerolamo invited further questions on the Resolution, but no further questions were presented. The Resolution was unanimously adopted.

DELAWARE RIVER JOINT TOLL BRIDGE COMMISSION

Meeting of February 25, 2008

APPOINTMENT OF KEVIN RAIKE TO BRIDGE OFFICER POSITION, SOUTHERN DIVISION TOLL SUPPORTED BRIDGES

R:1491-02-08 – HR-07-02-08

Chairman DeGerolamo addressed the Meeting and asked the Commission Members if, after their review, there were any questions.

At the conclusion of the review Commissioner Sumners moved and Commissioner Hodas seconded the adoption of the following Resolution:

“RESOLVED, by The Delaware River Joint Toll Bridge Commission, at it’s Regular Meeting assembled this 25th day of February 2008, that the Commission, via this Resolution, authorizes the appointment of Kevin Raika to the position of Bridge Officer at the Southern Division Toll Supported Bridge with compensation fixed at \$32,321 per annum, which is the minimum step in range for the Bridge Officer position (\$32,321-\$41,247), pending satisfactory completion of the required personnel processing; and

“FURHTER RESOLVED, That the Commission authorizes the Executive Director to effect the employment of Kevin Raika to the Bridge Officer position, pending satisfactory completion of the required personnel processing.”

Chairman DeGerolamo invited further questions on the Resolution, but no further questions were presented. The Resolution was unanimously adopted.

APPOINTMENT OF SEAN MCCARTHY TO TOLL COLLECTOR POSITION – NEW HOPE -LAMBERTVILLE TOLL BRIDGE

R:1492-02-08 – HR-08-02-08

Chairman DeGerolamo addressed the Meeting and asked the Commission Members if, after their review, there were any questions.

At the conclusion of the review Commissioner Hart moved and Commissioner Alfano seconded the adoption of the following Resolution:

“RESOLVED, by The Delaware River Joint Toll Bridge Commission, at it’s Regular Meeting assembled this 25th day of February 2008, that the Commission, via this Resolution, authorizes the appointment of Sean McCarthy to the position of Toll Collector at the New Hope-Lambertville Toll Bridge with compensation fixed at \$35,635 annum, which is the minimum step in range for the Toll Collector position (\$35,635 - \$45,481), pending satisfactory completion of the required personnel processing; and

“FURTHER RESOLVED, that the Commission authorizes the Executive Director to effect the employment of Sean McCarthy to the Toll Collector position, pending satisfactory completion of the required personnel processing.”

DELAWARE RIVER JOINT TOLL BRIDGE COMMISSION

Meeting of February 25, 2008

Chairman DeGerolamo invited further questions on the Resolution, but no further questions were presented. The Resolution was unanimously adopted.

APPOINTMENT OF SANDY DORAN TO TOLL COLLECTOR POSITION – I-78 TOLL BRIDGE

R:1493-02-08 – HR-09-02-08

Chairman DeGerolamo addressed the Meeting and asked the Commission Members if, after their review, there were any questions.

At the conclusion of the review Commissioner Zikas moved and Commissioner Hart seconded the adoption of the following Resolution:

“RESOLVED, by The Delaware River Joint Toll Bridge Commission, at it’s Regular Meeting assembled this 25th day of February 2008, that the Commission, via this Resolution, authorizes the appointment of Sandy Doran to the position of Toll Collector at the I-78 Toll Bridge with compensation fixed at \$35,635 per annum, which is the minimum step in range for the Toll Collector position (\$35,635 – \$45,481), pending satisfactory completion of the required personnel processing; and

“FURTHER RESOLVED, that the Commission authorizes the Executive Director to effect the employment of Sandy Doran to the Toll Collector position, pending satisfactory completion of the required personnel processing.”

Chairman DeGerolamo invited further questions on the Resolution, but no further questions were presented. The Resolution was unanimously adopted.

APPOINTMENT OF STACY SMITH TO SECRETARY II POSITION AT EASTON PHILLIPSBURG TOLL BRIDGE

R:1494-02-08 – HR-10-02-08

Chairman DeGerolamo addressed the Meeting and asked the Commission Members if, after their review, there were any questions.

At the conclusion of the review Commissioner Fowler moved and Commissioner Hodas seconded the adoption of the following Resolution:

“RESOLVED, by The Delaware River Joint Toll Bridge Commission, at it’s Regular Meeting assembled this 25th day of February 2008, that the Commission, via this Resolution, authorizes the appointment of Stacy Smith to the position of Secretary II at Easton-Phillipsburg with compensation fixed at \$33,942 per annum, which is the minimum step in range for the Secretary II position (\$33,942-\$43,317), pending satisfactory completion of the required personnel processing; and

DELAWARE RIVER JOINT TOLL BRIDGE COMMISSION

Meeting of February 25, 2008

“FURTHER RESOLVED, that the Commission authorizes the Executive Director to effect the employment of Stacy Smith to the Secretary II position, pending satisfactory completion of the required personnel processing.”

Chairman DeGerolamo invited further questions on the Resolution, but no further questions were presented. The Resolution was unanimously adopted.

ACCEPTANCE OF 2007 ANNUAL INSPECTION REPORT SUBMITTED BY THE GENERAL ENGINEERING CONSULTANT

R: 1495-02-08 – ENG-01-02-08

Chairman DeGerolamo addressed the Meeting and asked the Commission Members if, after their review, there were any questions.

At the conclusion of the review Commissioner Sumners moved and Commissioner Alfano seconded the adoption of the following Resolution:

“RESOLVED, by The Delaware River Joint Toll Bridge Commission, at it’s Regular Meeting assembled this 25th day of February 2008, that the Commission, via this Resolution, authorizes receipt, filing, and acceptance of 2007 Annual Inspection Report as prepared by the Commission’s General Engineering Consultant TranSystems | Lichtenstein.”

Chairman DeGerolamo invited further questions on the Resolution, but no further questions were presented. The Resolution was unanimously adopted.

PRESENTATION BY TRANSYSTEM/LICHTENSTEIN REGARDING THE 2007 ANNUAL INSPECTION REPORT

Representatives from Transystem/Lichtenstein, presented to the Commissioners, a brief overview and explanation of the findings, in the 2007 Annual Inspection report.

2008 CAPITAL PLAN

R:1496-02-08 – ADM-04-02-08

Chairman DeGerolamo addressed the Meeting and asked the Commission Members if, after their review, there were any questions.

At the conclusion of the review Commissioner Sumners moved and Commissioner Alfano seconded the adoption of the following Resolution:

“RESOLVED, by the Delaware River Joint Toll Bridge Commission, at its Regular Meeting assembled this 25th day of February 2008, that the Commission, via this Resolution, adopts the 2008 Capital Plan in the amount of \$150,677,000; and

DELAWARE RIVER JOINT TOLL BRIDGE COMMISSION

Meeting of February 25, 2008

“FURTHER RESOLVED, identifies the General Reserve Fund as the source of funds required.”

Chairman DeGerolamo invited further questions on the Resolution, but no further questions were presented. The Resolution was unanimously adopted

I-78 ROADWAY REEHABILITATION DESIGN, APPROVAL OF CONSULTANT AGREEMENT MODIFICATION NO. 6

R: 1497-02-08 – ENG-03-02-08

Chairman DeGerolamo addressed the Meeting and asked the Commission Members if, after their review, there were any questions.

At the conclusion of the review Commissioner Sumners moved and Commissioner Hart seconded the adoption of the following Resolution:

“RESOLVED, by The Delaware River Joint Toll Bridge Commission, at it’s Regular Meeting assembled this 25th day of February 2008, that the Commission, via this Resolution, authorize the Executive Director to execute Consultant Agreement Modification No. 6 in the amount of \$91,354.09 and increase the total contract value for the I-78 Roadway Rehabilitation Design, Contract C-424A from a not-to-exceed amount of \$2,914,382.65 to \$3,005,736.74, an increase of 3.13%; and

“RESOLVED, Identify the General Reserve Fund as the source of funds required for payment of any invoices; and

“FURTHER RESOLVED, The Executive Director is hereby authorized to approve and execute Modification No. 6 on behalf of the DRJTBC.”

Chairman DeGerolamo invited further questions on the Resolution, but no further questions were presented. The Resolution was unanimously adopted.

I-78 OPEN ROAD TOLLING (ORT) LANES DESIGN APPROVAL OF MODIFICATION NO. 4

R: 1498-02-08 – ENG-04-02-08

Chairman DeGerolamo addressed the Meeting and asked the Commission Members if, after their review, there were any questions.

At the conclusion of the review Commissioner Hart moved and Commissioner Alfano seconded the adoption of the following Resolution:

“RESOLVED, By The Delaware River Joint Toll Bridge Commission, at it’s Regular Meeting assembled this 25th day of February 2008, that the Commission, via this Resolution, authorize

DELAWARE RIVER JOINT TOLL BRIDGE COMMISSION

Meeting of February 25, 2008

the Executive Director to execute Contract Modification No. 4 in the amount of \$56,766 and to increase the total contract value for the I-78 Open Road Tolling (ORT) Lanes Design, Contract C-427B from a not to exceed amount of \$4,125,172 to \$4,181,938, an increase of 1.4%; and

“RESOLVED, Identify the General Reserve Fund as the source of funds required for payment of any invoices; and

“FURTHER RESOLVED, The Executive Director is hereby authorized to approve and execute Modification No. 4 on behalf of the DRJTBC.”

Chairman DeGerolamo invited further questions on the Resolution, but no further questions were presented. The Resolution was unanimously adopted.

DELAWARE WATER GAP TOLL BRIDGE BEARING REMEDIATION AND DECK STUDY

R: 1499-02-08 – ENG-05-02-08

Chairman DeGerolamo addressed the Meeting and asked the Commission Members if, after their review, there were any questions.

At the conclusion of the review Commissioner Hodas moved and Commissioner Sumners seconded the adoption of the following Resolution:

“RESOLVED, by The Delaware River Joint Toll Bridge Commission, at it’s Regular Meeting assembled this 25th day of February 2008, that the Commission, via this Resolution, authorizes the Executive Director, in consultation with the Chair and Vice Chair of the Commission, to award the contract to the Consultant whose proposal has been deemed qualified through the RFLOI procurement process and determined to be fair, reasonable and in the best interest of the Commission. This award is to be ratified by the full Commission at the next available Commission Meeting following award by the Executive Director; and

“RESOLVED, Identify the General Reserve Fund as the source of funds required for payment of any invoices; and

“FURTHER RESOLVED, “The Executive Director is hereby authorized to approve and execute all necessary contracts on behalf of the Commission.”

Chairman DeGerolamo invited further questions on the Resolution, but no further questions were presented. The Resolution was unanimously adopted.

DELAWARE RIVER JOINT TOLL BRIDGE COMMISSION

Meeting of February 25, 2008

ETC SYSTEM SPARE PARTS

R: 1500-02-08 – ADM-03-02-08

Chairman DeGerolamo addressed the Meeting and asked the Commission Members if, after their review, there were any questions.

At the conclusion of the review Commissioner Sumners moved and Commissioner Alfano seconded the adoption of the following Resolution:

“WHEREAS, the Delaware River Joint Toll Bridge Commission (the Commission) was created, as a body corporate and politic, by a compact between the State of New Jersey and the Commonwealth of Pennsylvania, with the consent of the Congress of the United States (the “Compact”); and

“WHEREAS, the Commission constitutes a public corporation instrumentality of the State of New Jersey and the Commonwealth of Pennsylvania; and

“WHEREAS, the laws of the State of New Jersey and the Commonwealth of Pennsylvania do not apply to the Commission unless complimentary legislation is enacted in both States and approved by Congress; and

“WHEREAS, the Commission nevertheless maintains a practice of receiving bids for ordinary goods and services, consistent with the laws of the State of New Jersey and the Commonwealth of Pennsylvania; and ordinarily awards such purchases after a public bid to the lowest responsive bidder; and

“WHEREAS, the Commission has entered into a contract with TransCore, LP to perform maintenance on the Electronic Toll Collection system; and

WHEREAS, a highly orchestrated spare parts program and a high state of equipment reliability is required to maintain high lane availability on a 24/7 basis; and

“WHEREAS, the Spare Parts List includes DVAS camera servers to replace the existing servers that have reached the end of their useful life; and

“WHEREAS, TransCore, LP is the only vendor who can provide the necessary spare parts support and replacement equipment compatible with the existing ETC equipment to maintain the ETC system at peak performance levels so as to minimize any disruption in toll revenue; and

“WHEREAS, legislation previously enacted by the respective States, which was never approved by Congress, would permit the Commission in such a circumstance to enter into a contract with TransCore, LP without the requirement of public bidding; and

“NOW, THEREFORE, be it resolved, that the Delaware River Joint Toll Bridge Commission, at it’s Regular Meeting assembled this 25th day of February 2008, that the Commission, via this

DELAWARE RIVER JOINT TOLL BRIDGE COMMISSION

Meeting of February 25, 2008

Resolution, authorizes the Executive Director to issue a sole source purchase order to TransCore, LP in the sum of \$105,550.00 to provide replacement DVAS servers and spare parts to support the continuing operation of the electronic toll collection system., and identify the Operating Reserve Fund as the source of funds required for payment and all disbursements.”

Chairman DeGerolamo invited further questions on the Resolution, but no further questions were presented. The Resolution was unanimously adopted.

GEDP-SPONSORSHIP AGREEMENT

R: 1501-02-08 – ADM-05-02-08

Chairman DeGerolamo addressed the Meeting and asked the Commission Members if, after their review, there were any questions.

At the conclusion of the review Commissioner Sumners moved and Commissioner Alfano seconded the adoption of the following Resolution:

“RESOLVED, By The Delaware River Joint Toll Bridge Commission, at it’s Regular Meeting assembled this 25th day of February 2008, that the Commission, via this Resolution, authorize the Executive Director to execute a Sponsorship Agreement with the Greater Easton Development Partnership (GEDP) to provide support to the “Block-Block Ambassador Program” in the amount of \$50,000; and

“FURTHER RESOLVED, Identify the Operating Fund as the source of funds required for any and all disbursements; and

Chairman DeGerolamo invited further questions on the Resolution, but no further questions were presented. The Resolution was unanimously adopted.

APPROVAL FOR PAYMENT OF INVOICES FLORIO, PERRUCCI, STEINHARDT AND FADER

R: 1502-02-08 - ACCT-01-02-08

Chairman DeGerolamo addressed the meeting and asked the Commission Members if, after their review, there were any questions.

At the conclusion of the review Commissioner Alfano and Commissioner Hodas seconded the adoption of the following Resolution:

“RESOLVED, By The Delaware River Joint Toll Bridge Commission, at it’s Regular Meeting assembled this 25th day of February 2008, that the Commission, via this Resolution, authorizes payment of invoices numbers #12318, #14374 and #14099 dated November 5, 2007, February 4, 2008, and February 5, 2008 in the total amount due of \$7,526.40 for Capital and Non Capital Improvements to Florio, Perrucci, Steinhardt and Fader, NJ Legal Counsel; and

DELAWARE RIVER JOINT TOLL BRIDGE COMMISSION

Meeting of February 25, 2008

“FURTHER RESOLVED, identifying the Appropriate Funds as shown on the invoice distribution sheet as the source required for any and all disbursements.”

Chairman DeGerolamo invited questions on the Resolution, but no questions were presented. The Resolution was unanimously adopted.

APPROVAL FOR PAYMENT OF INVOICE FOX ROTHSCHILD, PENNSYLVANIA LEGAL COUNSEL

R: 1503-02-08 - ACCT-02-02-08

Chairman DeGerolamo addressed the meeting and asked the Commission Members if, after their review, there were any questions.

At the conclusion of the review Commissioner Alfano moved and Commissioner Hodas seconded the adoption of the following Resolution:

“RESOLVED, By The Delaware River Joint Toll Bridge Commission, at it's Regular Meeting Assembled this 25th day of February 2008, that the Commission, via this Resolution, Authorizes payment of invoice numbers #999696, #999685, #999699, #999702, #983964, #999682, #999684, #999686, #999705, #999698, #999689, #999692, #999688, #999701, and #999687 dated November 20, 2007 and January 31, 2008 in the total amount due of \$21,830.61 for Capital and Non Capital Improvements to Fox Rothschild PA Legal Counsel; and

“FURTHER RESOLVED, identifying the Appropriate Funds as shown on the invoice distribution sheet as the source required for any and all disbursements.”

Chairman DeGerolamo invited questions on the Resolution, but no questions were presented. The Resolution was unanimously adopted.

APPROVAL FOR PAYMENT OF INVOICES WOLFF AND SAMSON, NJ LABOR COUNSEL

R: 1504-02-08 - ACCT-03-03-08

Chairman DeGerolamo addressed the meeting and asked the Commission Members if, after their review, there were any questions.

At the conclusion of the review Commissioner Alfano moved and Commissioner Hodas seconded the adoption of the following Resolution:

“RESOLVED, By The Delaware River Joint Toll Bridge Commission, at it's Regular Meeting assembled this 25th day of February 2008, that the Commission, via this Resolution, Authorizes

DELAWARE RIVER JOINT TOLL BRIDGE COMMISSION

Meeting of February 25, 2008

payment of invoices dated February 6, 2008 and February 8, 2008 in the amount of \$5,650.00 to Wolff and Samson, New Jersey Labor Counsel; and

“FURTHER RESOLVED, identifying the Operating Fund as the source of funds required for any and all disbursements.”

Chairman DeGerolamo invited questions on the Resolution, but no questions were presented. The Resolution was unanimously adopted.

INTRODUCE ANY COMMENTS FROM THE PUBLIC

Chairman DeGerolamo addressed the meeting and invited any comments from the Public or Press.

SCHEDULING OF THE MARCH 2008 MEETING

Chairman DeGerolamo addressed the Meeting and stated that the Commission's next meeting will be held March 31, 2008.

The Meeting will be called to Order at 10:30 a.m. at The Inn at Lambertville Station in the Riverside Room located at 11 Bridge Street, Lambertville, NJ 08530.


Executive Director McCartney assured the Commission Members that an “Official Notice of Meeting” would be forwarded to each and every Member of the Commission.

ADJOURNMENT

Chairman DeGerolamo invited a motion for Adjournment.

Commissioner Zikas then moved that the Meeting be adjourned and Commissioner Prevoznik seconded the motion. The voice vote was unanimously affirmative and the Meeting was adjourned at 12:40 p.m., Monday, February 25, 2008.

Prepared and submitted by:


WENDY VADOLA READING
Assistant Secretary Treasurer to the Commission

Approved by:


FRANK G. McCARTNEY
Executive Director

DELAWARE RIVER JOINT TOLL BRIDGE COMMISSION

Meeting of February 25, 2008

**FINANCE, INSURANCE AND MANAGEMENT OPERATIONS
COMMITTEE REPORT**

DONALD HART (Chairman), (New Jersey)

HARRY ZIKAS, (New Jersey)

GAETAN ALFANO, (Pennsylvania)

J. ALAN FOWLER, (Pennsylvania)

The following pages reflect a report on those items assigned to the Finance, Insurance and Management Committee.

Each item is reported separately and page numbered accordingly hereunder.

DELAWARE RIVER JOINT TOLL BRIDGE COMMISSION

Meeting of February 25, 2008

SUBJECT	DESCRIPTION	PAGE NUMBER
Accounting	Status of Cash Balances at January 31, 2008	1
Accounting	Status of Bond Retirement at January 31, 2008	2
Accounting	Status of Investments at January 31, 2008	3-16
Accounting	Status of Toll Traffic and Revenue & Toll Supported Traffic Month of January 2008 Compared with Month of January 2007	17-29
Accounting	Statistical Summary of Expenditures on Toll Bridges and Toll Supported Bridges Accounts for the Period January 1, 2008 through January 31, 2008	30-42
Accounting	Statement of Revenue and Expenses; One Month Period ending January 31, 2008	43
Accounting	Comparative Analysis of Toll Overages and Shortages Month of January 2008	44

DELAWARE RIVER JOINT TOLL BRIDGE COMMISSION

Meeting of February 25, 2008

**There follows Cash Balances of the Commission at January 31, 2008 for the
information and review of the Members:**

COMMISSION CASH DEPOSITS

Wachovia Bank

Revenue Fund	4,057,191
Payroll Fund	89,412

TOTAL	\$	4,146,603
--------------	-----------	------------------

CASH DEPOSIT GUARANTEES

WACHOVIA BANK	WACHOVIA BANK	FULL BALANCE	WACHOVIA BANK
	PA ACT 72		

DELAWARE RIVER JOINT TOLL BRIDGE COMMISSION

Meeting of February 25, 2008

STATUS OF BRIDGE SYSTEM REVENUE BONDS at January 31, 2008

Maturity	SERIES 2003				SERIES 2005A				SERIES 2007A				SERIES 2007B				Total	
	Yield	Principal Amount	Maturities & Calls	Yield	Principal Amount	Maturities & Calls	Yield	Principal Amount	Yield	Principal Amount	Maturities & Calls	Yield	Principal Amount	Maturities & Calls	Yield	Principal Amount	Average Yield	Remaining Outstanding
7/1/2003	1.25%	\$ 3,010,000	\$ 3,010,000		N/A			N/A	3.53%	\$ 470,000			N/A		4.23%	\$ 3,350,000	3.48%	\$ 9,900,000
7/1/2004	1.58%	4,330,000	4,330,000		N/A			N/A	3.53%	1,615,000			N/A		4.23%	3,350,000	3.66%	11,340,000
7/1/2005	1.84%	4,455,000	4,455,000	2.35%	\$ 330,000	\$ 330,000		N/A	3.53%	1,410,000			N/A		4.23%	3,650,000	3.83%	11,740,000
7/1/2006	2.23%	4,635,000	4,635,000	2.50%	895,000	895,000		N/A	3.54%	1,545,000			N/A		4.23%	3,850,000	3.96%	12,420,000
7/1/2007	2.65%	4,865,000	4,865,000	2.76%	930,000	930,000		N/A	3.56%	1,670,000			N/A		4.23%	3,950,000	4.05%	13,015,000
7/1/2008	3.09%	5,115,000		2.90%	965,000				3.58%	1,660,000					4.23%	4,200,000	4.13%	13,650,000
7/1/2009	3.46%	5,370,000		3.06%	1,005,000				3.62%	1,450,000					4.23%	4,350,000	4.14%	13,795,000
7/1/2010	3.76%	5,635,000		3.23%	1,045,000				3.66%	1,920,000					4.23%	4,450,000	4.12%	14,735,000
7/1/2011	3.99%	5,930,000		3.39%	1,095,000				3.73%	1,760,000					4.23%	4,800,000	4.23%	15,420,000
7/1/2012	4.16%	6,245,000		3.53%	1,150,000				3.80%	2,000,000					4.23%	4,950,000	4.26%	16,275,000
7/1/2013	4.30%	6,580,000		3.66%	1,210,000				3.88%	2,010,000					4.23%	5,250,000	4.27%	17,090,000
7/1/2014	4.91%	6,915,000	3,920,000	3.76%	5,000,000				3.96%	2,135,000					4.23%	5,450,000	4.12%	14,065,000
7/1/2015	4.67%	7,270,000	4,125,000	3.85%	5,220,000				4.03%	2,275,000					4.23%	5,650,000	4.15%	14,765,000
7/1/2016	4.94%	7,665,000	4,345,000	3.96%	5,540,000				4.08%	2,260,000					4.23%	5,950,000	4.47%	15,645,000
7/1/2017	4.98%	8,060,000	4,570,000	4.02%	5,835,000				4.12%	2,400,000					4.23%	6,250,000	4.50%	16,460,000
7/1/2018	4.94%	8,490,000	4,815,000	4.04%	6,155,000				4.17%	2,490,000					4.23%	6,550,000	4.52%	17,245,000
7/1/2019	4.99%	5,060,000	5,060,000	4.09%	6,480,000				4.21%	2,640,000					4.23%	6,800,000	4.55%	18,060,000
7/1/2020	4.96%	5,330,000	5,330,000	4.13%	6,840,000				4.25%	2,710,000					4.23%	7,150,000	4.58%	18,910,000
7/1/2021	4.98%	5,610,000		4.14%	1,825,000				4.27%	2,855,000					4.23%	7,450,000	4.62%	19,810,000
7/1/2022	5.03%	5,890,000		4.19%	1,920,000				4.30%	2,925,000					4.23%	7,800,000	4.62%	20,695,000
7/1/2023	5.07%	6,185,000		4.23%	2,020,000				4.35%	3,050,000					4.23%	8,200,000	4.63%	21,705,000
7/1/2024	5.10%	6,495,000		4.35%	2,125,000				4.35%	3,200,000					4.23%	8,550,000	4.34%	14,425,000
7/1/2025	5.14%	6,815,000		4.35%	2,235,000				4.35%	3,375,000					4.23%	8,900,000	4.34%	15,070,000
7/1/2026	5.14%	7,160,000		4.67%	2,345,000				4.35%	3,475,000					4.23%	9,350,000	4.26%	12,825,000
7/1/2027	5.14%	7,520,000		4.67%	2,450,000				4.39%	3,595,000					4.23%	9,800,000	4.27%	13,395,000
7/1/2028	5.14%	7,895,000		4.67%	2,560,000				4.39%	14,000,000						N/A	4.39%	14,000,000
7/1/2029		N/A		4.67%	2,675,000				4.39%	14,700,000						N/A	4.39%	14,700,000
7/1/2030		N/A		4.67%	2,795,000				4.39%	15,435,000						N/A	4.39%	15,435,000
7/1/2031		N/A			N/A				4.60%	16,205,000						N/A	4.60%	16,205,000
7/1/2032		N/A			N/A				4.60%	16,935,000						N/A	4.60%	16,935,000
7/1/2033		N/A			N/A													
7/1/2034		N/A			N/A													
7/1/2035		N/A			N/A													
7/1/2036		N/A			N/A													
7/1/2037		N/A			N/A													
		\$ 158,530,000	\$ 53,460,000		\$ 72,645,000	\$ 2,155,000		\$ 134,170,000		\$ 150,000,000	\$ -		\$ 459,730,000					

DELAWARE RIVER JOINT TOLL BRIDGE COMMISSION

Meeting of February 25, 2008

INVESTMENTS

There follows an analysis of investments for the month of January 31, 2008.

OPERATING FUND

No Activity

RESERVE MAINTENANCE FUND

No Activity

DEBT SERVICE FUND

No Activity

DEBT SERVICE RESERVE FUND SERIES 2003

Investment by the Commission on January 28, 2008 of \$3,972,097.78 in a FNMA note.

Investment by the Commission on January 28, 2008 of \$3,971,351.11 in a FHLB note.

Investment by the Commission on January 28, 2008 of \$3,972,933.33 in a FHLMC note.

DEBT SERVICE RESERVE FUND SERIES 2005

Investment by the Commission on January 28, 2008 of \$993,024.44 in a FNMA note.

Investment by the Commission on January 28, 2008 of \$1,886,391.78 in a FHLB note.

DEBT SERVICE RESERVE FUND SERIES 2007

Investment by the Commission on January 28, 2008 of \$3,972,097.78 in a FNMA note.

Investment by the Commission on January 28, 2008 of \$4,666,337.56 in a FHLB note.

Investment by the Commission on January 28, 2008 of \$2,979,700.00 in a FHLMC note.

GENERAL RESERVE FUND

Investment by the Commission on January 30, 2008 of \$14,998,500.00 in a FHLB note.

Investment by the Commission on January 30, 2008 of \$15,000,000.00 in a FHLMC note.

CONSTRUCTION FUND SERIES 2005

Investment by the Commission on January 28, 2008 of \$2,959,290.00 in a FNMA note.

Investment by the Commission on January 28, 2008 of \$2,979,073.33 in a FNMA note.

Investment by the Commission on January 28, 2008 of \$3,847,675.00 in a FHLMC note.

Investment by the Commission on January 28, 2008 of \$2,978,513.33 in a FHLB note.

CONSTRUCTION FUND SERIES 2007

Investment by the Commission on January 28, 2008 of \$39,457,200.00 in a FNMA note.

Investment by the Commission on January 28, 2008 of \$39,463,333.33 in a FHLMC note.

Investment by the Commission on January 28, 2008 of \$34,749,322.22 in a FHLB note.

Investment by the Commission on January 29, 2008 of \$27,622,738.89 in a FHLB note.

Investment by the Commission on January 30, 2008 of \$29,997,000.00 in a FHLB note.

Investment by the Commission on January 30, 2008 of \$30,000,000.00 in a FHLMC note.

Delaware River Joint Toll Bridge Commission
Operating Fund
Investments at January 31, 2008

Par Value	Security Description	Rate	Maturity Date	Cost	Market Value	Yield	Percentage of Assets
1,000,000.00	FHLB	4.50%	5-Nov-08	1,000,000.00	1,004,690.00	4.50%	25.67%
2,895,966.34	MONEY MKT	3.46%	1-Feb-08	2,895,966.34	2,895,966.34	3.46%	74.33%
\$ 3,895,966.34	Total Portfolio			\$ 3,895,966.34	\$ 3,900,656.34	3.73%	100.00%

**Delaware River Joint Toll Bridge Commission
Reserve Maintenance Fund
Investments at January 31, 2008**

Par Value	Security Description	Rate	Maturity Date	Cost	Market Value	Yield	Percentage of Assets
2,209,753.98	MONEY MKT	3.46%	1-Feb-08	2,209,753.98	2,209,753.98	3.46%	100.00%
\$ 2,209,753.98	Total Portfolio			\$ 2,209,753.98	\$ 2,209,753.98	3.46%	100.00%

Delaware River Joint Toll Bridge Commission
Debt Service Fund
Investments at January 31, 2008

Par Value	Security Description	Rate	Maturity Date	Cost	Market Value	Yield	Percentage of Assets
\$ 1,993,320.18	MONEY MKT	3.46%	1-Feb-08	\$ 1,993,320.18	\$ 1,993,320.18	3.46%	100.00%
\$ 1,993,320.18	Total Portfolio			\$ 1,993,320.18	\$ 1,993,320.18	3.46%	100.00%

Delaware River Joint Toll Bridge Commission
Debt Service Reserve Fund Series 2003
Investments at January 31, 2008

Par Value	Security Description	Rate	Maturity Date	Cost	Market Value	Yield	Percentage of Assets
4,000,000.00	FHLMC	0.00%	21-Apr-08	\$ 3,972,933.33	\$ 3,976,800.00	2.97%	32.77%
4,000,000.00	FNMA	0.00%	23-Apr-08	3,972,097.78	3,976,000.00	2.99%	32.77%
4,000,000.00	FHLB	0.00%	25-Apr-08	3,971,351.11	3,975,600.00	3.00%	32.77%
207,187.12	MONEY MKT	3.46%	1-Feb-08	207,187.12	207,187.12	3.46%	1.70%
\$ 12,207,187.12	Total Portfolio			\$ 12,123,569.34	\$ 12,135,587.12	2.99%	100.00%

**Delaware River Joint Toll Bridge Commission
Debt Service Reserve Fund Series 2005A
Investments at January 31, 2008**

Par Value	Security Description	Rate	Maturity Date	Cost	Market Value	Yield	Percentage of Assets
1,000,000.00	FNMA	0.00%	23-Apr-08	\$ 993,024.44	\$ 994,000.00	2.99%	33.54%
1,900,000.00	FHLB	0.00%	25-Apr-08	\$ 1,886,391.78	\$ 1,888,410.00	3.00%	63.73%
81,301.94	MONEY MKT	3.46%	1-Feb-08	81,301.94	81,301.94	3.46%	2.73%
\$ 2,981,301.94	Total Portfolio			\$ 2,960,718.16	\$ 2,963,711.94	3.01%	100.00%

Delaware River Joint Toll Bridge Commission
Debt Service Reserve Fund Series 2007
Investments at January 31, 2008

Par Value	Security Description	Rate	Maturity Date	Cost	Market Value	Yield	Percentage of Assets
3,000,000.00	FHLMC	0.00%	21-Apr-08	\$ 2,979,700.00	\$ 2,982,600.00	2.97%	25.38%
4,000,000.00	FNMA	0.00%	23-Apr-08	\$ 3,972,097.78	\$ 3,976,000.00	2.99%	33.84%
4,700,000.00	FHLB	0.00%	25-Apr-08	\$ 4,666,337.56	\$ 4,671,330.00	3.00%	39.76%
121,241.00	MONEY MKT	3.46%	1-Feb-08	121,241.00	121,241.00	3.46%	1.03%
\$ 11,821,241.00	Total Portfolio			\$ 11,739,376.34	\$ 11,751,171.00	2.99%	100.00%

Delaware River Joint Toll Bridge Commission
General Reserve Fund
Investments at January 31, 2008

Par Value	Security Description	Rate	Maturity Date	Cost	Market Value	Yield	Percentage of Assets
\$ 1,178,089.81	PA INVEST	3.95%	1-Feb-08	\$ 1,178,089.81	\$ 1,178,089.81	3.95%	0.68%
6,000,000.00	FHLMC	0.00%	5-May-08	5,872,395.00	5,959,800.00	4.39%	3.46%
5,000,000.00	FHLB	4.42%	8-May-08	5,000,000.00	5,020,300.00	4.42%	2.88%
6,200,000.00	FHLMC	3.88%	15-Jun-08	6,190,204.00	6,223,250.00	4.17%	3.57%
5,000,000.00	FHLB	5.25%	13-Aug-08	5,000,000.00	5,004,700.00	5.25%	2.88%
5,000,000.00	FNMA	3.25%	15-Aug-08	4,970,400.00	5,012,500.00	4.10%	2.88%
6,500,000.00	FHLB	4.50%	6-Nov-08	6,500,000.00	6,530,485.00	4.50%	3.74%
15,000,000.00	FHLB	2.88%	30-Jan-09	14,998,500.00	15,018,750.00	2.89%	8.64%
15,000,000.00	FHLMC	2.81%	30-Jan-09	15,000,000.00	15,012,300.00	2.81%	8.64%
5,000,000.00	FHLB	5.25%	5-Feb-09	5,000,000.00	5,001,550.00	5.24%	2.88%
5,000,000.00	FNMA	5.30%	20-Feb-09	5,000,000.00	5,007,800.00	5.30%	2.88%
5,000,000.00	FHLMC	5.30%	27-Feb-09	4,998,437.50	5,009,650.00	5.32%	2.88%

Delaware River Joint Toll Bridge Commission
General Reserve Fund
Investments at January 31, 2008

Par Value	Security Description	Rate	Maturity Date	Cost	Market Value	Yield	Percentage of Assets
4,000,000.00	FHLMC	3.76%	18-Mar-09	3,999,560.00	4,047,520.00	3.76%	2.30%
2,300,000.00	FNMA	5.25%	15-Apr-09	2,300,000.00	2,305,750.00	5.25%	1.33%
1,000,000.00	FFCB	3.75%	10-Jun-09	999,850.00	1,015,000.00	3.76%	0.58%
5,000,000.00	FHLB	5.30%	14-Aug-09	5,000,000.00	5,004,700.00	5.30%	2.88%
5,000,000.00	FHLB	5.13%	28-Aug-09	5,000,000.00	5,009,400.00	5.13%	2.88%
4,000,000.00	FHLB	4.50%	5-Nov-09	4,000,000.00	4,038,760.00	4.50%	2.30%
6,000,000.00	FHLB	4.55%	20-Nov-09	6,000,000.00	6,035,640.00	4.55%	3.46%
3,000,000.00	FHLB	4.25%	3-Dec-09	3,000,000.00	3,040,320.00	4.25%	1.73%
5,000,000.00	FHLB	5.40%	12-Feb-10	4,997,656.25	5,004,700.00	5.42%	2.88%
5,000,000.00	FHLB	4.60%	5-May-10	5,000,000.00	5,046,900.00	4.60%	2.88%
5,000,000.00	FHLB	4.50%	14-May-10	5,000,000.00	5,068,750.00	4.50%	2.88%

**Delaware River Joint Toll Bridge Commission
General Reserve Fund**

Investments at January 31, 2008

Par Value	Security Description	Rate	Maturity Date	Cost	Market Value	Yield	Percentage of Assets
2,000,000.00	FHLB	4.48%	14-May-10	2,000,000.00	2,026,880.00	4.48%	1.15%
2,000,000.00	FHLB	4.63%	5-Nov-10	2,000,000.00	2,026,260.00	4.63%	1.15%
5,000,000.00	FHLB	4.80%	5-Nov-10	5,000,000.00	5,025,000.00	4.80%	2.88%
5,000,000.00	FHLB	4.75%	8-Nov-10	5,000,000.00	5,025,000.00	4.75%	2.88%
3,000,000.00	FHLB	4.80%	16-Nov-10	3,000,000.00	3,016,890.00	4.80%	1.73%
31,389,954.60	MONEY MKT	3.46%	1-Feb-08	31,389,954.60	31,389,954.60	3.46%	18.09%
\$ 173,568,044.41	Total Portfolio			\$ 173,395,047.16	\$ 174,106,599.41	4.16%	100.00%

**Delaware River Joint Toll Bridge Commission
Construction Fund Series 2005A
Investments at January 31, 2008**

Par Value	Security Description	Rate	Maturity Date	Cost	Market Value	Yield	Percentage of Assets
3,000,000.00	FHLB	5.25%	1-Feb-08	3,000,000.00	3,000,000.00	5.24%	6.95%
2,000,000.00	FHLB	5.20%	15-Feb-08	2,000,000.00	2,001,880.00	5.20%	4.63%
3,000,000.00	FNMA	0.00%	23-Apr-08	2,979,073.33	2,982,000.00	2.99%	6.95%
3,000,000.00	FHLB	0.00%	25-Apr-08	2,978,513.33	2,981,700.00	3.00%	6.95%
5,000,000.00	FHLMC	4.30%	5-May-08	4,972,650.00	5,018,150.00	5.07%	11.58%
3,900,000.00	FHLMC	0.00%	21-Jul-08	3,847,675.00	3,853,980.00	2.84%	9.03%
3,000,000.00	FNMA	0.00%	23-Jul-08	2,959,290.00	2,964,300.00	2.84%	6.95%
5,000,000.00	FNMA	0.00%	28-Jul-08	4,851,483.33	4,938,500.00	4.18%	11.58%
5,000,000.00	FHLB	5.15%	15-Aug-08	5,000,000.00	5,004,700.00	5.15%	11.58%
5,000,000.00	FHLB	4.50%	5-Nov-08	5,000,000.00	5,023,450.00	4.50%	11.58%
5,000,000.00	FHLB	4.50%	7-Nov-08	5,000,000.00	5,023,450.00	4.50%	11.58%

**Delaware River Joint Toll Bridge Commission
Construction Fund Series 2005A
Investments at January 31, 2008**

Par Value	Security Description	Rate	Maturity Date	Cost	Market Value	Yield	Percentage of Assets
283,100.71	MONEY MKT	3.46%	1-Feb-08	283,100.71	283,100.71	3.46%	0.66%
\$ 43,183,100.71	Total Portfolio			\$ 42,871,785.70	\$ 43,075,210.71	4.21%	100.00%

**Delaware River Joint Toll Bridge Commission
Construction Fund Series 2007
Investments at January 31, 2008**

Par Value	Security Description	Rate	Maturity Date	Cost	Market Value	Yield	Percentage of Assets
35,000,000.00	FHLB	0.00%	25-Apr-08	34,749,322.22	34,786,500.00	3.00%	12.84%
40,000,000.00	FHLMC	0.00%	21-Jul-08	39,463,333.33	39,528,000.00	2.84%	14.68%
40,000,000.00	FNMA	0.00%	23-Jul-08	39,457,200.00	39,524,000.00	2.80%	14.68%
28,000,000.00	FHLB	0.00%	25-Jul-08	27,622,738.89	27,661,200.00	2.81%	10.27%
30,000,000.00	FHLB	2.88%	30-Jan-09	29,997,000.00	30,037,500.00	2.89%	11.01%
30,000,000.00	FHLMC	2.81%	30-Jan-09	30,000,000.00	30,024,600.00	2.81%	11.01%
69,527,990.85	MONEY MKT	3.46%	1-Feb-08	69,527,990.85	69,527,990.85	3.46%	25.51%
\$ 272,527,990.85	Total Portfolio			\$ 270,817,585.29	\$ 271,089,790.85	3.01%	100.00%
\$ 524,387,906.53	Grand Total			\$ 522,007,122.49	\$ 523,225,801.53	3.50%	

DELAWARE RIVER JOINT TOLL BRIDGE COMMISSION

Meeting of February 25, 2008

STATISTICS OF TOLL TRAFFIC AND REVENUE MONTH AND YEAR-TO-DATE PERIOD ENDING JANUARY 31, 2008 COMPARED WITH MONTH AND YEAR-TO-DATE PERIOD ENDING JANUARY 31, 2007

The following provides a comparison of toll direction traffic volumes for the month and year-to-date periods ending January 31, 2008, as compared with the month and year-to-date periods ending January 31, 2007.

Traffic Volume Comparisons – January 2008 versus January 2007

In the month of January, total vehicular toll traffic for the Commission's seven (7) toll bridges decreased by 68,700 vehicles or 2.3%, as compared to January 2007. Total recorded westbound traffic volume at the 11 vehicular toll supported bridges increased by 46,300 vehicles or 1.9% as compared to the previous year.

In District I, toll traffic at Trenton-Morrisville (TM) for January 2008 decreased by 41,400 cars and increased by 1,800 trucks as compared to January 2007, resulting in a 6.8% decrease in total toll traffic. It is noted that roadway construction work for the Trenton – Morrisville Toll Bridge Rehabilitation and One Auxiliary Northbound Lane (T-380B) began in January 2007. At New Hope-Lambertville (NHL), a decrease of 20,700 cars combined with a decrease of 300 trucks generated an overall decrease in total toll traffic of 12.7% for January 2008 as compared to January 2007. Beginning on November 16, 2007, the outer (right) lanes in each direction of the New Hope – Lambertville Toll Bridge were closed pending the completion of repair work.

In District II, a 9,100 decrease in cars combined with a decrease of 2,700 trucks resulted in a 1.5% decrease in total toll traffic at I-78 for the month of January 2008 as compared to January 2007. The Easton-Phillipsburg (EP) Toll Bridge experienced an increase in traffic volume. An increase of 11,400 passenger vehicles and a decrease of 700 trucks generated an overall increase of 2.2% in total toll traffic for January 2008.

In District III, total toll traffic at Portland-Columbia (PC) reflected a decrease of 5.6% for the month of January 2008 as a result of a decrease of 5,700 automobiles and a decrease of 400 trucks. At the Delaware Water Gap (DWG) Toll Bridge, a decrease of 1,700 passenger vehicles combined with an increase of 1,700 trucks generated a 0.0% increase in total toll traffic for the month as compared to January 2007. Milford-Montague (MM) experienced a decrease of approximately 1,000 passenger vehicles and an increase of less than 100 trucks, resulting overall in a 1.0% decrease in toll traffic for the month.

E-Z Pass Penetration Rates

The following table provides a summary of E-Z Pass penetration rates experienced at the Commission's seven (7) toll bridges during January 2008, January 2007, 2008 year-to-date (YTD), and 2007 year-to-date. E-Z Pass penetration rates for all of the Commission's toll bridges was 58.7% for the month of January 2008 and is 58.7% 2008 year-to-date. Overall E-Z Pass penetration rates increased by 2.5% in January 2008 as compared to January 2007; including an increase of 2.4% in autos and an increase of 2.8% in trucks.

		E-Z Pass Penetration Rates					
		January 2008	January 2007	Change in Monthly Percent	YTD 2008	YTD 2007	Change in YTD Percent
All Toll Bridges	Cars	56.51%	54.13%	2.38%	56.51%	54.13%	2.38%
	Trucks	72.07%	69.29%	2.78%	72.07%	69.29%	2.78%
	Total	58.71%	56.23%	2.48%	58.71%	56.23%	2.48%
Trenton - Morrisville	Cars	55.52%	53.10%	2.42%	55.52%	53.10%	2.42%
	Trucks	82.24%	80.83%	1.41%	82.24%	80.83%	1.41%
	Total	57.55%	54.98%	2.57%	57.55%	54.98%	2.57%
New Hope - Lambertville	Cars	65.53%	61.10%	4.43%	65.53%	61.10%	4.43%
	Trucks	75.06%	72.35%	2.71%	75.06%	72.35%	2.71%
	Total	66.09%	61.70%	4.39%	66.09%	61.70%	4.39%
I-78	Cars	56.45%	54.62%	1.83%	56.45%	54.62%	1.83%
	Trucks	72.57%	69.79%	2.78%	72.57%	69.79%	2.78%
	Total	60.56%	58.48%	2.08%	60.56%	58.48%	2.08%
Easton - Phillipsburg	Cars	59.84%	57.87%	1.97%	59.84%	57.87%	1.97%
	Trucks	72.43%	69.40%	3.03%	72.43%	69.40%	3.03%
	Total	60.78%	58.77%	2.01%	60.78%	58.77%	2.01%
Portland - Columbia	Cars	53.41%	49.44%	3.97%	53.41%	49.44%	3.97%
	Trucks	70.52%	67.77%	2.75%	70.52%	67.77%	2.75%
	Total	54.33%	50.44%	3.89%	54.33%	50.44%	3.89%
Delaware Water Gap	Cars	53.79%	51.23%	2.56%	53.79%	51.23%	2.56%
	Trucks	67.56%	64.58%	2.98%	67.56%	64.58%	2.98%
	Total	55.99%	53.34%	2.65%	55.99%	53.34%	2.65%
Milford - Montague	Cars	54.16%	52.28%	1.88%	54.16%	52.28%	1.88%
	Trucks	72.92%	65.18%	7.74%	72.92%	65.18%	7.74%
	Total	54.71%	52.64%	2.07%	54.71%	52.64%	2.07%

DELAWARE RIVER JOINT TOLL BRIDGE COMMISSION

ALL TOLL BRIDGES

COMPARATIVE STATEMENT OF TOLL TRAFFIC AND REVENUE

JANUARY 2008

JANUARY 1, 2007			JANUARY 1, 2008			MONTH OF			MONTH OF		
JANUARY 31, 2007			JANUARY 31, 2008			JANUARY 31, 2008			JANUARY 2007		
31 DAYS			31 DAYS			31 DAYS			31 DAYS		
NUMBER OF VEHICLES	TOTAL REVENUE		NUMBER OF VEHICLES	TOTAL REVENUE	VEHICLE CLASS	NUMBER OF VEHICLES	TOTAL REVENUE		NUMBER OF VEHICLES	TOTAL REVENUE	
2,571,959	1,727,300.55		2,503,917	1,672,490.85	Passenger	2,503,917	1,672,490.85		2,571,959	1,727,300.55	
-	(33,477.71)		-	(34,902.99)	Discounts *	-	(34,902.99)		-	(33,477.71)	
2,571,959	1,693,822.84	\$	2,503,917	1,637,587.86	TOTAL PASSENGER	2,503,917	1,637,587.86	\$	2,571,959	1,693,822.84	\$
66,146	317,678.50		66,185	317,317.25	2-Axle Trucks	66,185	317,317.25		66,146	317,678.50	
27,962	218,742.19		29,183	269,335.66	3-Axle Trucks	29,183	269,335.66		27,962	218,742.19	
24,949	256,517.25		25,026	304,494.45	4-Axle Trucks	25,026	304,494.45		24,949	256,517.25	
288,386	3,765,999.05		286,138	4,405,150.97	5-Axle Trucks	286,138	4,405,150.97		288,386	3,765,999.05	
5,983	92,239.42		6,237	112,915.73	6-Axle Trucks	6,237	112,915.73		5,983	92,239.42	
208	4,494.89		221	5,553.31	7-Axle Trucks	221	5,553.31		208	4,494.89	
4	228.60		7	373.44	Permits	7	373.44		4	228.60	
413,638	4,655,899.90	\$	412,897	5,415,140.81	TOTAL TRUCKS	412,897	5,415,140.81	\$	413,638	4,655,899.90	\$
2,985,597	6,349,722.74	\$	2,916,914	7,052,728.67	TOTAL TOLL VEHICLES	2,916,914	7,052,728.67	\$	2,985,597	6,349,722.74	\$
96,310	204,829.77	\$	94,094	227,507.38	DAILY AVERAGE	94,094	227,507.38	\$	96,310	204,829.77	\$

Rate Change	
Traffic (toll)	-2.30%
Autos	-2.65%
Trucks	-0.15%
Revenue	11.07%
Autos	-3.32%
Trucks	16.31%
EZPass Penetration	
Cars	56.51%
Trucks	72.07%
Total	58.71%

Rate Change	
Traffic (toll)	-2.30%
Autos	-2.65%
Trucks	-0.15%
Revenue	11.07%
Autos	-3.32%
Trucks	16.31%
EZPass Penetration	
Cars	56.51%
Trucks	72.07%
Total	58.71%

* Discounts represents rebates for commuter discounts earned when a customer crosses the Commission's bridges 20 times in a 35 day period as well as discounts for employee's and commission vehicle's non-revenue crossings.

Notes: Significant construction at the Trenton-Morrisville Toll Bridge is causing moderate diversion to the local toll-supported bridges.

DELAWARE RIVER JOINT TOLL BRIDGE COMMISSION

TRENTON - MORRISVILLE TOLL BRIDGE

COMPARATIVE STATEMENT OF TOLL TRAFFIC AND REVENUE

JANUARY 2008

JANUARY 1, 2007 JANUARY 31, 2007 31 DAYS			JANUARY 1, 2008 JANUARY 31, 2008 31 DAYS			MONTH OF JANUARY 2008 31 DAYS			MONTH OF JANUARY 2007 31 DAYS		
NUMBER OF VEHICLES	TOTAL REVENUE	NUMBER OF VEHICLES	TOTAL REVENUE	VEHICLE CLASS	NUMBER OF VEHICLES	TOTAL REVENUE	NUMBER OF VEHICLES	TOTAL REVENUE	NUMBER OF VEHICLES	TOTAL REVENUE	
539,731	362,468.70 (6,284.85)	498,375	332,877.00 (5,961.17)	Passenger	498,375	332,877.00	539,731	362,468.70			
-	(6,284.85)	-	(5,961.17)	Discounts *	-	(5,961.17)	-	(6,284.85)			
539,731	\$ 356,183.85	498,375	\$ 326,915.83	TOTAL PASSENGER	498,375	\$ 326,915.83	539,731	\$ 356,183.85			
14,448	69,138.75	14,690	70,304.25	2-Axle Trucks	14,690	70,304.25	14,448	69,138.75			
5,745	45,065.94	6,856	63,343.31	3-Axle Trucks	6,856	63,343.31	5,745	45,065.94			
3,839	39,911.85	5,475	67,429.70	4-Axle Trucks	5,475	67,429.70	3,839	39,911.85			
15,128	195,938.28	13,893	212,254.67	5-Axle Trucks	13,893	212,254.67	15,128	195,938.28			
131	2,050.65	143	2,631.09	6-Axle Trucks	143	2,631.09	131	2,050.65			
3	55.83	2	44.36	7-Axle Trucks	2	44.36	3	55.83			
-	-	-	-	Permits	-	-	-	-			
39,294	\$ 352,161.30	41,059	\$ 416,007.38	TOTAL TRUCKS	41,059	\$ 416,007.38	39,294	\$ 352,161.30			
579,025	\$ 708,345.15	539,434	\$ 742,923.21	TOTAL TOLL VEHICLES	539,434	\$ 742,923.21	579,025	\$ 708,345.15			
18,678	\$ 22,849.84	17,401	\$ 23,965.26	DAILY AVERAGE	17,401	\$ 23,965.26	18,678	\$ 22,849.84			
Rate Change											
Traffic (toll)			Rate Change			Traffic (toll)			Rate Change		
Autos			Autos			Autos			Autos		
Trucks			Trucks			Trucks			Trucks		
Revenue			Revenue			Revenue			Revenue		
Autos			Autos			Autos			Autos		
Trucks			Trucks			Trucks			Trucks		
EZPass Penetration			EZPass Penetration			EZPass Penetration			EZPass Penetration		
Cars			Cars			Cars			Cars		
Trucks			Trucks			Trucks			Trucks		
Total			Total			Total			Total		

Rate Change	
Traffic (toll)	-6.84%
Autos	-7.66%
Trucks	4.49%
Revenue	4.88%
Autos	-8.22%
Trucks	18.13%
EZPass Penetration	
Cars	55.52%
Trucks	82.24%
Total	57.55%

Rate Change	
Traffic (toll)	-6.84%
Autos	-7.66%
Trucks	4.49%
Revenue	4.88%
Autos	-8.22%
Trucks	18.13%
EZPass Penetration	
Cars	55.52%
Trucks	82.24%
Total	57.55%

* Discounts represents rebates for commuter discounts earned when a customer crosses the Commission's bridges 20 times in a 35 day period as well as discounts for employee's and commission vehicle's non-revenue crossings.

Note: Significant construction at the Trenton-Morrisville Toll Bridge is causing moderate diversion to the local toll-supported bridges.

COMPARATIVE STATEMENT OF TOLL TRAFFIC AND REVENUE

Note: Temporary closures of the Centre Bridge-Stockton Toll Supported Bridge for a rehabilitation project increased traffic volumes in 2007.

DELAWARE RIVER JOINT TOLL BRIDGE COMMISSION

178 TOLL BRIDGE

COMPARATIVE STATEMENT OF TOLL TRAFFIC AND REVENUE

JANUARY 2008

JANUARY 1, 2007			JANUARY 1, 2008			MONTH OF			MONTH OF		
JANUARY 31, 2007			JANUARY 31, 2008			JANUARY 2008			JANUARY 2007		
31 DAYS			31 DAYS			31 DAYS			31 DAYS		
NUMBER OF VEHICLES	TOTAL REVENUE		NUMBER OF VEHICLES	TOTAL REVENUE	VEHICLE CLASS	NUMBER OF VEHICLES	TOTAL REVENUE		NUMBER OF VEHICLES	TOTAL REVENUE	
580,855	380,934.35		571,782	383,239.95	Passenger	571,782	383,239.95		580,855	380,934.35	
-	(5,850.99)		-	(7,357.37)	Discounts *	-	(7,357.37)		-	(5,850.99)	
580,855 \$	385,083.36		571,782 \$	375,882.58	TOTAL PASSENGER	571,782 \$	375,882.58		580,855 \$	385,083.36	
17,915	86,019.50		18,111	86,717.75	2-Axle Trucks	18,111	86,717.75		17,915	85,019.50	
7,663	59,894.53		7,931	73,027.34	3-Axle Trucks	7,931	73,027.34		7,663	59,894.53	
10,456	106,543.80		9,294	111,885.15	4-Axle Trucks	9,294	111,885.15		10,456	106,543.80	
158,609	2,067,551.36		156,366	2,402,812.27	5-Axle Trucks	156,366	2,402,812.27		158,609	2,067,551.36	
3,608	55,325.97		3,783	68,057.48	6-Axle Trucks	3,783	68,057.48		3,608	55,325.97	
89	1,946.68		119	2,902.72	7-Axle Trucks	119	2,902.72		89	1,946.68	
-	-		-	-	Permits	-	-		-	-	
198,340 \$	2,377,281.84		195,604 \$	2,745,402.71	TOTAL TRUCKS	195,604 \$	2,745,402.71		198,340 \$	2,377,281.84	
779,195 \$	2,762,365.20		767,386 \$	3,121,285.29	TOTAL TOLL VEHICLES	767,386 \$	3,121,285.29		779,195 \$	2,762,365.20	
25,135 \$	89,108.55		24,754 \$	100,686.62	DAILY AVERAGE	24,754 \$	100,686.62		25,135 \$	89,108.55	

Rate Change	
Traffic (toll)	-1.52%
Autos	-1.56%
Trucks	-1.38%
Revenue	12.99%
Autos	-2.39%
Trucks	15.48%
EZPass Penetration	
Cars	56.45%
Trucks	72.57%
Total	60.56%

Rate Change	
Traffic (toll)	-1.52%
Autos	-1.56%
Trucks	-1.38%
Revenue	12.99%
Autos	-2.39%
Trucks	15.48%
EZPass Penetration	
Cars	56.45%
Trucks	72.57%
Total	60.56%

* Discounts represents rebates for commuter discounts earned when a customer crosses the Commission's bridges 20 times in a 35 day period as well as discounts for employee's and commission vehicle's non-revenue crossings.

DELAWARE RIVER JOINT TOLL BRIDGE COMMISSION

EASTON - PHILLIPSBURG TOLL BRIDGE

COMPARATIVE STATEMENT OF TOLL TRAFFIC AND REVENUE

JANUARY 2008

JANUARY 1, 2007		JANUARY 1, 2008		MONTH OF		MONTH OF	
JANUARY 31, 2007		JANUARY 31, 2008		JANUARY 2008		JANUARY 2007	
31 DAYS		31 DAYS		31 DAYS		31 DAYS	
NUMBER OF VEHICLES	TOTAL REVENUE	NUMBER OF VEHICLES	TOTAL REVENUE	VEHICLE CLASS	NUMBER OF VEHICLES	TOTAL REVENUE	TOTAL REVENUE
456,511	303,459.30	467,911	309,580.20	Passenger	467,911	309,580.20	303,459.30
-	(5,917.56)	-	(6,355.18)	Discounts *	-	(6,355.18)	(5,917.56)
456,511 \$	297,541.74	467,911 \$	303,225.02	TOTAL PASSENGER	467,911 \$	303,225.02	297,541.74
13,348	64,239.25	13,027	62,601.75	2-Axle Trucks	13,027	62,601.75	64,239.25
4,425	34,625.08	4,512	41,865.31	3-Axle Trucks	4,512	41,865.31	34,625.08
4,295	44,611.60	4,191	51,482.60	4-Axle Trucks	4,191	51,482.60	44,611.60
16,004	209,954.11	15,684	242,635.47	5-Axle Trucks	15,684	242,635.47	209,954.11
231	3,635.78	215	3,984.56	6-Axle Trucks	215	3,984.56	3,635.78
3	64.08	5	121.40	7-Axle Trucks	5	121.40	64.08
-	-	-	-	Permits	-	-	-
38,306 \$	357,129.90	37,634 \$	402,491.09	TOTAL TRUCKS	37,634 \$	402,491.09	357,129.90
494,817 \$	654,671.64	505,545 \$	705,716.11	TOTAL TOLL VEHICLES	505,545 \$	705,716.11	654,671.64
15,962 \$	21,118.44	16,308 \$	22,765.04	DAILY AVERAGE	16,308 \$	22,765.04	21,118.44

Rate Change	
Traffic (toll)	2.17%
Autos	2.50%
Trucks	-1.75%
Revenue	7.80%
Autos	1.91%
Trucks	12.70%
EZPass Penetration	
Cars	59.84%
Trucks	72.43%
Total	60.78%

Rate Change	
Traffic (toll)	2.17%
Autos	2.50%
Trucks	-1.75%
Revenue	7.80%
Autos	1.91%
Trucks	12.70%
EZPass Penetration	
Cars	59.84%
Trucks	72.43%
Total	60.78%

* Discounts represents rebates for commuter discounts earned when a customer crosses the Commission's bridges 20 times in a 35 day period as well as discounts for employee's and commission vehicle's non-revenue crossings.

PORTLAND - COLUMBIA TOLL BRIDGE

COMPARATIVE STATEMENT OF TOLL TRAFFIC AND REVENUE

JANUARY 2008

JANUARY 1, 2007 JANUARY 31, 2007 31 DAYS			JANUARY 1, 2008 JANUARY 31, 2008 31 DAYS			MONTH OF JANUARY 2008 31 DAYS			MONTH OF JANUARY 2007 31 DAYS		
NUMBER OF VEHICLES	TOTAL REVENUE	NUMBER OF VEHICLES	TOTAL REVENUE	VEHICLE CLASS	NUMBER OF VEHICLES	TOTAL REVENUE	NUMBER OF VEHICLES	TOTAL REVENUE	NUMBER OF VEHICLES	TOTAL REVENUE	
104,277	70,790.85 (2,016.08)	98,537	66,258.30 (2,481.35)	Passenger	98,537	66,258.30 (2,481.35)	104,277	70,790.85 (2,016.08)			
104,277 \$	68,774.77	98,537 \$	63,776.95	Discounts *	-	-	-	(2,016.08)			
				TOTAL PASSENGER	98,537	63,776.95	104,277	68,774.77			
2,365	11,416.25	2,320	11,181.75	2-Axle Trucks	2,320	11,181.75	2,365	11,416.25			
690	5,473.23	768	7,204.46	3-Axle Trucks	768	7,204.46	690	5,473.23			
532	5,616.60	344	4,306.90	4-Axle Trucks	344	4,306.90	532	5,616.60			
2,355	30,863.53	2,138	33,187.64	5-Axle Trucks	2,138	33,187.64	2,355	30,863.53			
67	1,071.04	29	545.13	6-Axle Trucks	29	545.13	67	1,071.04			
-	-	2	44.36	7-Axle Trucks	2	44.36	-	-			
-	-	-	-	Permits	-	-	-	-			
6,009 \$	54,440.65	5,601 \$	56,470.24	TOTAL TRUCKS	5,601	56,470.24	6,009	54,440.65			
110,286 \$	123,215.42	104,138 \$	120,247.19	TOTAL TOLL VEHICLES	104,138	120,247.19	110,286	123,215.42			
3,558 \$	3,974.69	3,359 \$	3,878.94	DAILY AVERAGE	3,359	3,878.94	3,558	3,974.69			

Rate Change	
Traffic (toll)	-5.57%
Autos	-5.50%
Trucks	-6.79%
Revenue	-2.41%
Autos	-7.27%
Trucks	3.73%
EZPass Penetration	
Cars	53.41%
Trucks	70.52%
Total	54.33%

Rate Change	
Traffic (toll)	-5.57%
Autos	-5.50%
Trucks	-6.79%
Revenue	-2.41%
Autos	-7.27%
Trucks	3.73%
EZPass Penetration	
Cars	53.41%
Trucks	70.52%
Total	54.33%

* Discounts represents rebates for commuter discounts earned when a customer crosses the Commission's bridges 20 times in a 35 day period as well as discounts for employee's and commission vehicle's non-revenue crossings.

Note: Temporary closures of the Riverton-Belvidere Toll Supported Bridge for a rehabilitation project increased traffic volumes in 2007.

COMPARATIVE STATEMENT OF TOLL TRAFFIC AND REVENUE

- * Discounts represents rebates for commuter discounts earned when a customer crosses the Commission's bridges 20 times in a 35 day period as well as discounts for employee's and commission vehicle's non-revenue crossings.

MILFORD - MONTAGUE TOLL BRIDGE

COMPARATIVE STATEMENT OF TOLL TRAFFIC AND REVENUE

JANUARY 2008

JANUARY 1, 2007			JANUARY 1, 2008			MONTH OF			MONTH OF		
JANUARY 31, 2007			JANUARY 31, 2008			JANUARY 2008			JANUARY 2007		
31 DAYS			31 DAYS			31 DAYS			31 DAYS		
NUMBER OF VEHICLES	TOTAL REVENUE		NUMBER OF VEHICLES	TOTAL REVENUE	VEHICLE CLASS	NUMBER OF VEHICLES	TOTAL REVENUE		NUMBER OF VEHICLES	TOTAL REVENUE	
92,011	62,084.10		91,055	61,186.05	Passenger	91,055	61,186.05		92,011	62,084.10	
-	(2,225.34)		-	(2,129.61)	Discounts *	-	(2,129.61)		-	(2,225.34)	
92,011 \$	59,858.76		91,055 \$	59,056.44	TOTAL PASSENGER	91,055	59,056.44		92,011 \$	59,858.76	
1,702	8,196.75		1,835	8,775.75	2-Axle Trucks	1,835	8,775.75		1,702	8,196.75	
229	1,832.21		201	1,894.14	3-Axle Trucks	201	1,894.14		229	1,832.21	
82	866.25		99	1,223.30	4-Axle Trucks	99	1,223.30		82	866.25	
671	8,776.51		585	9,025.18	5-Axle Trucks	585	9,025.18		671	8,776.51	
3	47.86		5	92.65	6-Axle Trucks	5	92.65		3	47.86	
1	22.00		-	-	7-Axle Trucks	-	-		1	22.00	
-	-		-	-	Permits	-	-		-	-	
2,688 \$	19,741.58		2,725 \$	21,011.02	TOTAL TRUCKS	2,725	21,011.02		2,688 \$	19,741.58	
94,669 \$	79,600.34		93,780 \$	80,067.46	TOTAL TOLL VEHICLES	93,780	80,067.46		94,699 \$	79,600.34	
3,055 \$	2,567.75		3,025 \$	2,582.82	DAILY AVERAGE	3,025	2,582.82		3,055 \$	2,567.75	
Rate Change											
Traffic (toll)											
Autos											
Trucks											
Revenue											
Autos											
Trucks											
EZPass Penetration											
Cars											
Trucks											
Total											
Rate Change											
Traffic (toll)											
Autos											
Trucks											
Revenue											
Autos											
Trucks											
EZPass Penetration											
Cars											
Trucks											
Total											

* Discounts represents rebates for commuter discounts earned when a customer crosses the Commission's bridges 20 times in a 35 day period as well as discounts for employee's and commission vehicle's non-revenue crossings.

Delaware River Joint Toll Bridge Commission
Toll Supported Bridge - Two Way Traffic Counts
January 2008

Bridge	Total Volume					
	January 2008	January 2007	% Change	YTD 2008	YTD 2007	% Change
Lower Trenton	549,171	524,204	4.76%	549,171	524,204	4.76%
Calhoun Street	546,405	542,687	0.69%	546,405	542,687	0.69%
Scudder Falls	1,713,675	1,685,485	1.67%	1,713,675	1,685,485	1.67%
Washington Crossing	212,292	192,444	10.31%	212,292	192,444	10.31%
New Hope - Lambertville	401,420	419,839	-4.39%	401,420	419,839	-4.39%
Centre Bridge - Stockton ¹	118,394	41,725	NA	118,394	41,725	NA
Uhlerstown - Frenchtown	107,030	109,786	-2.51%	107,030	109,786	-2.51%
Upper Black Eddy - Milford	104,657	105,158	-0.48%	104,657	105,158	-0.48%
Riegelsville	100,513	96,816	3.82%	100,513	96,816	3.82%
Northampton Street	684,793	693,543	-1.26%	684,793	693,543	-1.26%
Riverton - Belvidere ²	136,459	118,486	NA	136,459	118,486	NA
Total ³	4,419,956	4,369,962	1.14%	4,419,956	4,369,962	1.14%

NOTES:

1. Bridge closures for Bridge Rehabilitation project (TS-429A) beginning January 2007.
2. Sunday / Monday bridge closures for Bridge Rehabilitation project (TS-371A) starting October 2006 through July 2007.
3. Total does not include the Centre Bridge - Stockton and Riverton - Belvidere Toll Supported Bridges

Delaware River Joint Toll Bridge Commission Toll Supported Bridge - Westbound Traffic Counts January 2008

Bridge	Westbound Volume					
	January 2008	January 2007	% Change	YTD 2008	YTD 2007	% Change
Lower Trenton	386,499	388,381	-0.48%	386,499	388,381	-0.48%
Calhoun Street	268,788	274,168	-1.96%	268,788	274,168	-1.96%
Scudder Falls	883,272	872,383	1.25%	883,272	872,383	1.25%
Washington Crossing	128,217	109,476	17.12%	128,217	109,476	17.12%
New Hope - Lambertville	187,876	191,451	-1.87%	187,876	191,451	-1.87%
Centre Bridge - Stockton ¹	53,932	22,772	NA	53,932	22,772	NA
Uhlertown - Frenchtown	52,725	54,209	-2.74%	52,725	54,209	-2.74%
Upper Black Eddy - Milford	50,168	47,330	6.00%	50,168	47,330	6.00%
Riegelsville	48,312	45,248	6.77%	48,312	45,248	6.77%
Northampton Street	396,053	411,861	-3.84%	396,053	411,861	-3.84%
Riverton - Belvidere ²	72,675	64,947	NA	72,675	64,947	NA
Total ³	2,401,910	2,394,507	0.31%	2,401,910	2,394,507	0.31%

NOTES:

1. Bridge closures for Bridge Rehabilitation project (TS-429A) beginning January 2007.
2. Sunday / Monday bridge closures for Bridge Rehabilitation project (TS-371A) starting October 2006 through July 2007.
3. Total does not include the Centre Bridge - Stockton and Riverton - Belvidere Toll Supported Bridges

Delaware River Joint Toll Bridge Commission **Toll Bridge - Two Way Traffic Counts**

January 2008

Bridge	Total Volume (all classes)					
	January 2008	January 2007	% Change	YTD 2008	YTD 2007	% Change
Trenton - Morrisville	1,592,836	1,620,580	-1.71%	1,592,836	1,620,580	-1.71%
New Hope - Lambertville ¹	277,977	315,954	-12.02%	277,977	315,954	-12.02%
Interstate 78	1,570,891	1,607,194	-2.26%	1,570,891	1,607,194	-2.26%
Easton - Phillipsburg	1,133,362	1,122,102	1.00%	1,133,362	1,122,102	1.00%
Portland - Columbia ²	211,527	226,935	-6.79%	211,527	226,935	-6.79%
Delaware Water Gap	1,538,046	1,536,863	0.08%	1,538,046	1,536,863	0.08%
Milford - Montague	218,772	222,228	-1.56%	218,772	222,228	-1.56%
Total	6,543,411	6,651,856	-1.63%	6,543,411	6,651,856	-1.63%

NOTES:

1. Temporary closures of the Centre Bridge - Stockton Toll Supported Bridge for rehabilitation project (TS-429A) increased traffic volumes in 2007.

2. Temporary closures of the Riverton - Belvidere Toll Supported Bridge for rehabilitation project (TS-371A) increased traffic volumes in 2007.

DELAWARE RIVER JOINT TOLL BRIDGE COMMISSION

Meeting of February 25, 2008

STATISTICAL SUMMARY OF EXPENDITURES

There follows reports entitled “**Budget vs Actual**” covering the month of January 2008 , the first month of operations of fiscal year 2008 relative to Toll Bridges, Toll Supported Bridges and Administration departments.

Total expense plus encumbrance totaled \$3,877,621 for the month. This expense represents 88.7% of the 2008 year-to-date operating budget or 8.3% of the full 2008 operating budget. The expense for the first month of each fiscal year is traditionally the most expensive for a number of line items because contracts for road salt, fuel and heating oil are encumbered for the entire year during the month.

All expense line items are well within their budgets. There were no unusual/unanticipated expenditures for the month of January.

Delaware River Joint Toll Bridge Commission
Budget vs Actual
For the Month Ending January 31, 2008

TOTAL COMMISSION

	Budget 2008	Expended for the Month	Expended Year to Date	Encumbered	Budget Remaining Balance
Regular Employees Salaries	\$17,228,285	\$1,331,236	\$1,331,236	\$0	\$15,897,049
Temporary/Summer Salaries	609,170	38,374	38,374	0	570,796
Overtime Wages	395,000	30,325	30,325	0	364,675
Pension Contributions	667,833	44,256	44,256	0	623,577
Social Security Contributions	1,436,117	106,099	106,099	0	1,330,018
Health Care Benefits	5,349,696	385,379	385,379	0	4,964,317
Life Insurance	132,622	10,022	10,022	0	122,600
Retiree Benefits	2,323,000	176,618	176,618	0	2,146,382
Unemployment Compensation	30,000	25,930	25,930	0	4,070
Utility Expense	744,591	73,090	73,090	30,989	640,512
Office Expense	289,155	11,024	11,024	13,489	264,642
Communication	400,900	36,122	36,122	320	364,458
Information Technology	352,836	1,790	1,790	11,948	339,098
Education and Training	317,750	20,142	20,142	4,600	293,008
Vehicle Maint. & Equipment	324,800	10,061	10,061	102,334	212,405
Operations Maintenance	1,144,198	99,433	99,433	299,130	745,635
Commission	30,800	2,929	2,929	173	27,698
Toll Collection	115,200	7,574	7,574	0	107,626
Uniforms	84,600	1,210	1,210	11,217	72,173
Business Insurance	3,578,414	256,665	256,665	0	3,321,749
Civil Claim- Kennedy	15,000	0	0	0	15,000
Licenses & Inspections	4,570	321	321	0	4,249
Advertising	137,000	3,288	3,288	0	133,712
Professional Services	1,347,613	73,874	73,874	0	1,273,739
State Police Bridge Security	4,018,500	299,895	299,895	0	3,718,605
EZPass Equipment/Maintenance	1,275,000	89,472	89,472	0	1,185,528
General Contingency	320,000	0	0	0	320,000
EZPass Operating Expense	3,988,275	268,292	268,292	0	3,719,983
Total	\$46,660,925	\$3,403,421	\$3,403,421	\$474,200	\$42,783,304

**Delaware River Joint Toll Bridge Commission
Budget vs Actual
For the Month Ending January 31, 2008**

ADMINISTRATION*

	Budget 2008	Expended for the Month	Expended Year to Date	Encumbered	Budget Remaining Balance
Regular Employees Salaries	\$2,974,967	\$185,576	\$185,576	\$0	\$2,789,391
Temporary/Summer Salaries	38,014	2,336	2,336	0	35,678
Overtime Wages	11,400	20	20	0	11,380
Pension Contributions	112,540	5,622	5,622	0	106,918
Social Security Contributions	231,365	14,135	14,135	0	217,230
Health Care Benefits	661,964	44,291	44,291	0	617,673
Life Insurance	21,271	1,459	1,459	0	19,812
Retiree Benefits	418,837	31,844	31,844	0	386,993
Unemployment Compensation	30,000	25,930	25,930	0	4,070
Office Expense	190,200	9,098	9,098	8,735	172,367
Communication	93,850	3,003	3,003	0	90,847
Information Technology	305,201	1,790	1,790	11,948	291,463
Education and Training	213,100	16,987	16,987	4,600	191,513
Vehicle Maint. & Equipment	2,100	80	80	0	2,020
Commission	30,800	2,929	2,929	173	27,698
Business Insurance	357,920	10,595	10,595	0	347,325
Advertising	122,000	3,288	3,288	0	118,712
Professional Services	1,190,500	54,048	54,048	0	1,136,452
General Contingency	320,000	0	0	0	320,000
Total	\$7,326,029	\$413,031	\$413,031	\$25,456	\$6,887,542

* Includes Executive, Human Resources, Accounting, EZPass, Purchasing, Information Technology and Community Affair.

**Delaware River Joint Toll Bridge Commission
Budget vs Actual
For the Month Ending January 31, 2008**

ADMINISTRATION - OPERATIONS*

	Budget 2008	Expended for the Month	Expended Year to Date	Encumbered	Budget Remaining Balance
Regular Employees Salaries	\$984,416	\$122,238	\$122,238	\$0	\$862,178
Overtime Wages	0	101	101	0	(101)
Pension Contributions	59,949	3,827	3,827	0	56,122
Social Security Contributions	121,564	9,344	9,344	0	112,220
Health Care Benefits	295,908	19,809	19,809	0	276,099
Life Insurance	11,530	830	830	0	10,700
Office Expense	45,500	398	398	0	45,102
Communication	22,500	1,109	1,109	0	21,391
Information Technology	1,000	0	0	0	1,000
Education and Training	72,800	1,882	1,882	0	70,918
Vehicle Maint. & Equipment	2,000	0	0	0	2,000
Operations Maintenance	5,000	2,380	2,380	0	2,620
Business Insurance	46,788	0	0	0	46,788
Advertising	15,000	0	0	0	15,000
Professional Services	157,113	19,826	19,826	0	137,287
Total	\$1,841,068	\$181,744	\$181,744	\$0	\$1,659,324

* Includes Engineering, Security, Safety & Training, Policy & Planning, Plant & Facility, Electronic Security & Surveillance and Compact Authorized Investment.

Delaware River Joint Toll Bridge Commission
Budget vs Actual
For the Month Ending January 31, 2008

TRENTON - MORRISVILLE TOLL BRIDGE

	Budget 2008	Expended for the Month	Expended Year to Date	Encumbered	Budget Remaining Balance
Regular Employees Salaries	\$1,472,807	\$111,405	\$111,405	\$0	\$1,361,402
Temporary/Summer Salaries	65,925	3,191	3,191	0	62,734
Overtime Wages	35,800	895	895	0	34,905
Pension Contributions	58,190	3,600	3,600	0	54,590
Social Security Contributions	119,914	8,789	8,789	0	111,125
Health Care Benefits	498,371	36,779	36,779	0	461,592
Life Insurance	11,192	837	837	0	10,355
Retiree Benefits	219,756	16,708	16,708	0	203,048
Utility Expense	154,000	13,205	13,205	8,863	131,932
Office Expense	3,450	0	0	0	3,450
Communication	49,640	4,304	4,304	0	45,336
Information Technology	25,035	0	0	0	25,035
Education and Training	4,500	0	0	0	4,500
Vehicle Maint. & Equipment	53,000	847	847	16,013	36,140
Operations Maintenance	161,700	10,297	10,297	24,901	126,502
Toll Collection	24,500	1,110	1,110	0	23,390
Uniforms	15,000	185	185	0	14,815
Business Insurance	324,719	25,017	25,017	0	299,702
Licenses & Inspections	480	0	0	0	480
State Police Bridge Security	514,770	38,417	38,417	0	476,353
EZPass Equipment/Maintenance	182,143	14,912	14,912	0	167,231
EZPass Operating Expense	706,324	47,515	47,515	0	658,809
Total	\$4,701,216	\$338,013	\$338,013	\$49,777	\$4,313,426

**Delaware River Joint Toll Bridge Commission
Budget vs Actual
For the Month Ending January 31, 2008**

NEW HOPE - LAMBERTVILLE TOLL BRIDGE

	Budget 2008	Expended for the Month	Expended Year to Date	Encumbered	Budget Remaining Balance
Regular Employees Salaries	\$972,601	\$74,968	\$74,968	\$0	\$897,633
Temporary/Summer Salaries	16,205	276	276	0	15,929
Overtime Wages	18,000	2,516	2,516	0	15,484
Pension Contributions	35,059	2,469	2,469	0	32,590
Social Security Contributions	76,893	6,021	6,021	0	70,872
Health Care Benefits	295,918	23,742	23,742	0	272,176
Life Insurance	6,424	585	585	0	5,839
Retiree Benefits	139,845	10,632	10,632	0	129,213
Utility Expense	97,000	20,741	20,741	6,522	69,737
Office Expense	13,300	309	309	0	12,991
Communication	36,890	1,069	1,069	0	35,821
Information Technology	3,600	0	0	0	3,600
Education and Training	3,200	610	610	0	2,590
Vehicle Maint. & Equipment	52,000	2,144	2,144	35,373	14,483
Operations Maintenance	127,500	8,190	8,190	30,194	89,116
Toll Collection	16,000	412	412	0	15,588
Uniforms	1,000	99	99	122	779
Business Insurance	247,148	17,617	17,617	0	229,531
Licenses & Inspections	240	0	0	0	240
State Police Bridge Security	110,509	8,247	8,247	0	102,262
EZPass Equipment/Maintenance	145,714	9,941	9,941	0	135,773
EZPass Operating Expense	234,511	15,776	15,776	0	218,735
Total	\$2,649,557	\$206,364	\$206,364	\$72,211	\$2,370,982

Delaware River Joint Toll Bridge Commission
Budget vs Actual
For the Month Ending January 31, 2008

INTERSTATE - 78 TOLL BRIDGE

	Budget 2008	Expended for the Month	Expended Year to Date	Encumbered	Budget Remaining Balance
Regular Employees Salaries	\$2,159,230	\$170,446	\$170,446	\$0	\$1,988,784
Temporary/Summer Salaries	93,614	8,699	8,699	0	84,915
Overtime Wages	76,400	4,872	4,872	0	71,528
Pension Contributions	81,391	6,250	6,250	0	75,141
Social Security Contributions	177,354	13,982	13,982	0	163,372
Health Care Benefits	731,983	45,005	45,005	0	686,978
Life Insurance	15,654	1,328	1,328	0	14,326
Retiree Benefits	312,908	23,790	23,790	0	289,118
Utility Expense	99,000	5,234	5,234	15,604	78,162
Office Expense	5,750	482	482	0	5,268
Communication	33,640	917	917	0	32,723
Information Technology	3,600	0	0	0	3,600
Education and Training	3,050	157	157	0	2,893
Vehicle Maint. & Equipment	56,000	1,905	1,905	26,362	27,733
Operations Maintenance	185,300	35,770	35,770	61,560	87,970
Toll Collection	12,000	335	335	0	11,665
Uniforms	10,000	376	376	4,006	5,618
Business Insurance	583,841	54,514	54,514	0	529,327
Licenses & Inspections	400	91	91	0	309
State Police Bridge Security	598,355	44,654	44,654	0	553,701
EZPass Equipment/Maintenance	255,000	17,397	17,397	0	237,603
EZPass Operating Expense	1,099,169	73,941	73,941	0	1,025,228
Total	\$6,593,639	\$510,145	\$510,145	\$107,532	\$5,975,962

Delaware River Joint Toll Bridge Commission
Budget vs Actual
For the Month Ending January 31, 2008

EASTON - PHILLIPSBURG TOLL BRIDGE

	Budget 2008	Expended for the Month	Expended Year to Date	Encumbered	Budget Remaining Balance
Regular Employees Salaries	\$1,539,212	\$121,210	\$121,210	\$0	\$1,418,002
Temporary/Summer Salaries	83,526	6,613	6,613	0	76,913
Overtime Wages	47,000	3,622	3,622	0	43,378
Pension Contributions	59,427	4,105	4,105	0	55,322
Social Security Contributions	127,012	10,012	10,012	0	117,000
Health Care Benefits	498,339	39,032	39,032	0	459,307
Life Insurance	11,430	948	948	0	10,482
Retiree Benefits	213,019	16,196	16,196	0	196,823
Utility Expense	101,600	3,775	3,775	0	97,825
Office Expense	11,000	382	382	4,426	6,192
Communication	38,140	10,415	10,415	0	27,725
Information Technology	3,600	0	0	0	3,600
Education and Training	3,000	16	16	0	2,984
Vehicle Maint. & Equipment	32,000	841	841	14,702	16,457
Operations Maintenance	194,548	10,001	10,001	95,006	89,541
Toll Collection	15,000	1,438	1,438	0	13,562
Uniforms	9,000	93	93	784	8,123
Business Insurance	234,037	18,741	18,741	0	215,296
Licenses & Inspections	500	55	55	0	445
State Police Bridge Security	398,635	29,750	29,750	0	368,885
EZPass Equipment/Maintenance	182,143	12,427	12,427	0	169,716
EZPass Operating Expense	676,810	45,529	45,529	0	631,281
Total	\$4,478,978	\$335,201	\$335,201	\$114,918	\$4,028,859

Delaware River Joint Toll Bridge Commission
Budget vs Actual
For the Month Ending January 31, 2008

PORTLAND - COLUMBIA TOLL BRIDGE

	Budget 2008	Expended for the Month	Expended Year to Date	Encumbered	Budget Remaining Balance
Regular Employees Salaries	\$742,058	\$60,743	\$60,743	\$0	\$681,315
Temporary/Summer Salaries	50,237	2,406	2,406	0	47,831
Overtime Wages	27,400	3,125	3,125	0	24,275
Pension Contributions	25,832	2,134	2,134	0	23,698
Social Security Contributions	62,299	4,998	4,998	0	57,301
Health Care Benefits	233,612	16,988	16,988	0	216,624
Life Insurance	4,968	396	396	0	4,572
Retiree Benefits	99,889	7,595	7,595	0	92,294
Utility Expense	64,790	3,570	3,570	0	61,220
Office Expense	3,775	95	95	0	3,680
Communication	26,840	848	848	0	25,992
Information Technology	3,600	0	0	0	3,600
Education and Training	3,400	0	0	0	3,400
Vehicle Maint. & Equipment	21,500	916	916	0	20,584
Operations Maintenance	77,000	6,376	6,376	27,015	43,609
Toll Collection	13,500	746	746	0	12,754
Uniforms	5,500	0	0	0	5,500
Business Insurance	149,596	11,114	11,114	0	138,482
Licenses & Inspections	350	0	0	0	350
State Police Bridge Security	84,790	6,328	6,328	0	78,462
EZPass Equipment/Maintenance	109,286	7,456	7,456	0	101,830
EZPass Operating Expense	138,792	9,337	9,337	0	129,455
Total	\$1,949,014	\$145,171	\$145,171	\$27,015	\$1,776,828

Delaware River Joint Toll Bridge Commission
Budget vs Actual
For the Month Ending January 31, 2008

DELAWARE WATER GAP TOLL BRIDGE

	Budget 2008	Expended for the Month	Expended Year to Date	Encumbered	Budget Remaining Balance
Regular Employees Salaries	\$2,258,155	\$172,680	\$172,680	\$0	\$2,085,475
Temporary/Summer Salaries	184,673	11,872	11,872	0	172,801
Overtime Wages	59,500	4,164	4,164	0	55,336
Pension Contributions	89,264	5,880	5,880	0	83,384
Social Security Contributions	189,545	14,428	14,428	0	175,117
Health Care Benefits	763,131	58,281	58,281	0	704,850
Life Insurance	17,168	1,381	1,381	0	15,787
Retiree Benefits	326,149	24,797	24,797	0	301,352
Utility Expense	75,410	12,449	12,449	0	62,961
Office Expense	7,850	157	157	327	7,366
Communication	40,690	10,850	10,850	320	29,520
Information Technology	3,600	0	0	0	3,600
Education and Training	3,400	260	260	0	3,140
Vehicle Maint. & Equipment	49,400	803	803	0	48,597
Operations Maintenance	103,145	10,915	10,915	35,026	57,204
Toll Collection	20,700	2,445	2,445	0	18,255
Uniforms	13,000	159	159	0	12,841
Business Insurance	445,085	33,833	33,833	0	411,252
Licenses & Inspections	700	60	60	0	640
State Police Bridge Security	575,851	42,975	42,975	0	532,876
EZPass Equipment/Maintenance	291,429	19,883	19,883	0	271,546
EZPass Operating Expense	999,063	67,207	67,207	0	931,856
Total	\$6,516,908	\$495,479	\$495,479	\$35,673	\$5,985,756

Delaware River Joint Toll Bridge Commission
Budget vs Actual
For the Month Ending January 31, 2008

MILFORD - MONTAGUE TOLL BRIDGE

	Budget 2008	Expended for the Month	Expended Year to Date	Encumbered	Budget Remaining Balance
Regular Employees Salaries	\$771,346	\$57,324	\$57,324	\$0	\$714,022
Temporary/Summer Salaries	50,237	2,983	2,983	0	47,254
Overtime Wages	29,800	4,999	4,999	0	24,801
Pension Contributions	26,968	2,051	2,051	0	24,917
Social Security Contributions	64,723	4,914	4,914	0	59,809
Health Care Benefits	233,612	17,122	17,122	0	216,490
Life Insurance	7,261	419	419	0	6,842
Retiree Benefits	99,889	7,595	7,595	0	92,294
Utility Expense	61,050	6,271	6,271	0	54,779
Office Expense	3,750	103	103	0	3,647
Communication	28,140	1,940	1,940	0	26,200
Information Technology	3,600	0	0	0	3,600
Education and Training	3,400	230	230	0	3,170
Vehicle Maint. & Equipment	24,300	2,525	2,525	602	21,173
Operations Maintenance	98,450	7,702	7,702	23,517	67,231
Toll Collection	13,500	1,088	1,088	0	12,412
Uniforms	5,500	120	120	0	5,380
Business Insurance	115,099	7,907	7,907	0	107,192
Licenses & Inspections	400	0	0	0	400
State Police Bridge Security	87,603	6,538	6,538	0	81,065
EZPass Equipment/Maintenance	109,286	7,456	7,456	0	101,830
EZPass Operating Expense	133,607	8,988	8,988	0	124,619
Total	\$1,971,521	\$148,275	\$148,275	\$24,119	\$1,799,127

**Delaware River Joint Toll Bridge Commission
Budget vs Actual
For the Month Ending January 31, 2008**

SOUTHERN DIVISION TOLL SUPPORTED BRIDGES

	Budget 2008	Expended for the Month	Expended Year to Date	Encumbered	Budget Remaining Balance
Regular Employees Salaries	\$1,831,293	\$137,441	\$137,441	\$0	\$1,693,852
Temporary/Summer Salaries	22,320	0	0	0	22,320
Overtime Wages	52,200	3,601	3,601	0	48,599
Pension Contributions	65,705	4,540	4,540	0	61,165
Social Security Contributions	145,795	10,537	10,537	0	135,258
Health Care Benefits	622,942	45,071	45,071	0	577,871
Life Insurance	15,434	975	975	0	14,459
Retiree Benefits	272,953	20,753	20,753	0	252,200
Utility Expense	53,200	5,314	5,314	0	47,886
Office Expense	3,580	0	0	0	3,580
Communication	18,670	931	931	0	17,739
Education and Training	5,700	0	0	0	5,700
Vehicle Maint. & Equipment	17,500	0	0	2,690	14,810
Operations Maintenance	139,480	4,211	4,211	250	135,019
Uniforms	15,200	82	82	6,305	8,813
Business Insurance	716,202	52,228	52,228	0	663,974
Civil Claim- Kennedy	15,000	0	0	0	15,000
Licenses & Inspections	900	0	0	0	900
State Police Bridge Security	1,247,744	93,117	93,117	0	1,154,627
Total	\$5,261,818	\$378,801	\$378,801	\$9,245	\$4,873,772

Delaware River Joint Toll Bridge Commission
Budget vs Actual
For the Month Ending January 31, 2008

NORTHERN DIVISION TOLL SUPPORTED BRIDGES

	Budget 2008	Expended for the Month	Expended Year to Date	Encumbered	Budget Remaining Balance
Regular Employees Salaries	\$1,522,199	\$117,206	\$117,206	\$0	\$1,404,993
Temporary/Summer Salaries	4,420	0	0	0	4,420
Overtime Wages	37,500	2,410	2,410	0	35,090
Pension Contributions	53,508	3,777	3,777	0	49,731
Social Security Contributions	119,655	8,939	8,939	0	110,716
Health Care Benefits	513,918	39,259	39,259	0	474,659
Life Insurance	10,291	865	865	0	9,426
Retiree Benefits	219,756	16,708	16,708	0	203,048
Utility Expense	38,541	2,531	2,531	0	36,010
Office Expense	1,000	0	0	0	1,000
Communication	11,900	738	738	0	11,162
Education and Training	2,200	0	0	0	2,200
Vehicle Maint. & Equipment	15,000	0	0	6,594	8,406
Operations Maintenance	52,075	3,592	3,592	1,661	46,822
Uniforms	10,400	97	97	0	10,303
Business Insurance	357,981	25,099	25,099	0	332,882
Licenses & Inspections	600	115	115	0	485
State Police Bridge Security	400,243	29,870	29,870	0	370,373
Total	\$3,371,187	\$251,206	\$251,206	\$8,255	\$3,111,726

DELAWARE RIVER JOINT TOLL BRIDGE COMMISSION SYSTEM
STATEMENT OF REVENUE AND EXPENSES FOR THE ONE MONTH ENDED JANUARY 31, 2008

TOLL REVENUE	T-M	NH-L	I-78	E-P	P-C	DWG	M-M	SDTS	NDTS	ADM	TOTAL 2008	% of REVENUE	TOTAL 2007	% of REVENUE
EXPENSE	\$ 749,179	\$ 160,050	\$ 3,125,674	\$ 706,905	\$ 120,389	\$ 2,132,130	\$ 80,246	\$ -	\$ -	\$ -	\$ 7,074,573	18.82%	\$ 6,365,198	18.82%
Salaries & Wages	111,405	74,968	170,446	121,210	60,743	172,680	57,324	137,441	117,206	307,813	1,331,236	0.54%	1,302,007	0.54%
Temporary/Summer Salaries	3,191	276	8,699	6,613	2,406	11,872	2,983	-	-	2,336	36,374	0.18%	34,157	0.18%
Overtime Wages	895	2,516	4,872	3,622	3,125	4,164	4,999	3,601	2,410	121	30,325	0.43%	11,588	0.43%
PA Pension	3,600	2,469	6,250	4,105	2,134	5,880	2,051	4,540	3,777	9,449	44,256	0.63%	41,851	0.63%
Social Security	8,789	6,021	13,982	10,012	4,998	14,428	4,914	10,537	8,939	23,478	106,099	1.53%	101,044	1.53%
Health Care Benefits	36,779	23,742	45,005	39,032	16,988	58,281	17,122	45,071	39,259	64,100	383,379	5.45%	343,555	5.40%
Life Insurance Benefits	837	585	1,328	948	395	1,381	419	975	865	2,289	10,022	0.14%	12,728	0.20%
Retiree Health Benefits	16,708	10,632	23,790	16,196	7,595	24,797	7,595	20,753	16,708	31,844	176,618	2.50%	201,792	3.17%
Unemployment Benefits	-	-	-	-	-	-	-	-	-	25,930	25,930	0.37%	16,302	0.26%
Heat and Utilities	13,205	20,741	5,234	3,775	3,570	12,449	6,271	5,314	2,531	9,496	73,090	1.03%	39,156	0.62%
Office Expense	4,304	309	482	382	95	157	103	931	738	4,112	11,024	0.16%	18,244	0.29%
Communications Expense	-	1,069	917	10,415	848	10,850	1,940	-	-	1,790	36,122	0.51%	19,081	0.30%
Information Technology	-	-	-	-	-	-	-	-	-	-	1,790	0.03%	1,468	0.02%
Education & Training Expense	-	610	157	16	-	260	230	-	-	18,868	20,142	0.28%	25,362	0.40%
Vehicle Maint & Equip Expense	847	2,144	1,905	841	916	803	2,525	-	-	80	10,061	0.14%	11,317	0.18%
Operation's Maintenance Expense	10,297	8,190	33,770	10,001	6,376	10,915	7,702	4,211	3,592	2,380	99,433	1.41%	68,085	1.07%
Commission Expense	-	-	-	-	-	-	-	-	-	2,929	2,929	0.04%	5,692	0.09%
Toll Collection Expense	1,110	412	335	1,438	746	2,445	1,088	82	97	-	7,574	0.11%	5,987	0.09%
Uniform Expense	185	99	376	93	-	159	120	52,228	25,099	10,595	256,665	3.63%	256,382	4.04%
Business Insurance	25,017	17,617	54,514	18,741	11,114	33,833	7,907	-	-	-	-	0.00%	-	0.00%
Civil Claims - Kennedy	-	-	-	-	-	-	-	-	115	3,288	321	0.00%	68	0.00%
License & Inspection Expense	-	-	91	55	-	60	-	-	-	-	3,288	0.05%	5,535	0.09%
Advertising Expense	-	-	-	-	-	-	-	-	-	73,874	73,874	1.04%	54,560	0.86%
Professional Services	-	-	-	-	-	-	-	-	-	-	-	0.00%	-	0.00%
Research and Development	-	-	-	-	-	-	-	-	-	-	299,895	4.24%	352,844	5.54%
State Police Bridge Security	38,417	8,247	44,654	29,750	6,328	42,975	6,538	93,117	29,870	-	89,472	1.26%	86,184	1.35%
EZPass Equipment & Maintenance	14,912	9,941	17,397	12,427	7,456	19,863	7,456	-	-	-	-	0.00%	-	0.00%
General Contingency	-	-	-	-	-	-	-	-	-	-	268,292	3.79%	245,936	3.86%
Retire-Workmen's Compensation	-	-	-	-	-	-	-	-	-	-	3,403,421	48.11%	3,283,892	51.28%
EZ Pass Operating Expense	47,515	15,776	73,941	45,529	9,337	67,207	8,988	-	-	-	-	0.00%	-	0.00%
TOTAL OP., MAINT. & ADM	338,013	206,364	510,145	335,201	145,171	495,479	148,275	378,801	251,206	594,775	3,403,421	48.11%	3,283,892	51.28%
OTHER EXPENSES	-	-	-	-	-	-	-	-	-	-	-	-	-	-
Emergency Repairs	338,013	206,364	510,145	335,201	145,171	495,479	148,275	378,801	251,206	594,775	3,403,421	48.11%	3,283,892	51.28%
TOTAL EXPENSES	\$ 411,166	\$ (46,314)	\$ 2,615,529	\$ 371,704	\$ (24,782)	\$ 1,636,651	\$ (68,029)	\$ (378,801)	\$ (251,206)	\$ (594,775)	\$ 3,671,152	51.89%	\$ 3,101,306	48.72%
NET OPERATING REVENUE	-	-	-	-	-	-	-	-	-	-	-	-	-	-
OTHER INCOME	(976)	(134)	(919)	(194)	(89)	(1,736)	(57)	-	-	-	(4,105)	-0.06%	(1,162)	-0.02%
Cash Toll Over/(Short)	(7,991)	(617)	(4,637)	(1,167)	(183)	(2,955)	(158)	-	-	-	(17,708)	-0.25%	(13,858)	-0.22%
EZPass Over/(Short)	-	-	-	-	-	-	-	-	-	-	-	0.00%	-	0.00%
Toll Waivers	-	-	-	-	-	-	-	-	-	-	-	0.00%	-	0.00%
Other Income	-	-	-	-	-	-	-	-	-	-	-	0.00%	-	0.00%
TOTAL OTHER INCOME	(8,967)	(751)	(5,556)	(1,361)	(272)	(4,691)	(215)	-	-	164,422	164,422	2.32%	127,627	2.01%
Admin. Allocated Expense	(47,846)	(32,276)	(72,238)	(49,183)	(24,592)	(73,775)	(21,518)	(59,942)	(49,183)	430,353	142,609	2.02%	112,607	1.77%
OPERATING REVENUE/(LOSS)	\$ 354,553	\$ (79,341)	\$ 2,537,735	\$ 321,160	\$ (49,646)	\$ 1,568,185	\$ (89,762)	\$ (438,743)	\$ (300,389)	\$ -	\$ 3,813,761	53.91%	\$ 3,213,913	50.49%
Interest Expense	-	-	-	-	-	-	-	-	-	-	-	-	-	-
Investment Return	-	-	-	-	-	-	-	-	-	-	-	-	-	-
Revenue Fund	-	-	-	-	-	-	-	-	-	-	-	-	-	-
Operating Fund	-	-	-	-	-	-	-	-	-	-	-	-	-	-
Debt Service Fund	-	-	-	-	-	-	-	-	-	-	-	-	-	-
Debt Service Reserve Fund	-	-	-	-	-	-	-	-	-	-	-	-	-	-
Reserve Maintenance Fund	-	-	-	-	-	-	-	-	-	-	-	-	-	-
Construction Fund	-	-	-	-	-	-	-	-	-	-	-	-	-	-
General Reserve Fund	-	-	-	-	-	-	-	-	-	-	-	-	-	-
RETURNS ON INVESTMENTS	-	-	-	-	-	-	-	-	-	-	-	-	-	-
NET INCOME	-	-	-	-	-	-	-	-	-	-	-	-	-	-

COMPARATIVE ANALYSIS OF TOLL OVERAGES AND SHORTAGES

BRIDGE FACILITY	JAN	FEB	MAR	APR	MAY	JUN	JUL	AUG	SEP	OCT	NOV	DEC	TOTALS	YTD REVENUE	PER CENT OF REVENUE
TRENTON-MORRISVILLE															
Toll Lanes	(783)	-	-	-	-	-	-	-	-	-	-	-	(783)	749,179	-1.20%
EZ Pass	(7,991)	-	-	-	-	-	-	-	-	-	-	-	(7,991)		
Rejected Items	(193)	-	-	-	-	-	-	-	-	-	-	-	(193)		
													(8,967)		
NEW HOPE - LAMBERTVILLE															
Toll Lanes	(92)	-	-	-	-	-	-	-	-	-	-	-	(92)	160,050	-0.47%
EZ Pass	(617)	-	-	-	-	-	-	-	-	-	-	-	(617)		
Rejected Items	(42)	-	-	-	-	-	-	-	-	-	-	-	(42)		
													(751)		
INTERSTATE - 78															
Toll Lanes	(204)	-	-	-	-	-	-	-	-	-	-	-	(204)	3,125,674	-0.18%
EZ Pass	(4,637)	-	-	-	-	-	-	-	-	-	-	-	(4,637)		
Rejected Items	(715)	-	-	-	-	-	-	-	-	-	-	-	(715)		
													(5,556)		
EASTON - PHILLIPSBURG															
Toll Lanes	(20)	-	-	-	-	-	-	-	-	-	-	-	(20)	706,905	-0.19%
EZ Pass	(1,167)	-	-	-	-	-	-	-	-	-	-	-	(1,167)		
Rejected Items	(174)	-	-	-	-	-	-	-	-	-	-	-	(174)		
													(1,361)		
PORTLAND - COLUMBIA															
Toll Lanes	(59)	-	-	-	-	-	-	-	-	-	-	-	(59)	120,389	-0.23%
EZ Pass	(183)	-	-	-	-	-	-	-	-	-	-	-	(183)		
Rejected Items	(30)	-	-	-	-	-	-	-	-	-	-	-	(30)		
													(272)		
DELAWARE WATER GAP															
Toll Lanes	(1,302)	-	-	-	-	-	-	-	-	-	-	-	(1,302)	2,132,130	-0.22%
EZ Pass	(2,955)	-	-	-	-	-	-	-	-	-	-	-	(2,955)		
Rejected Items	(434)	-	-	-	-	-	-	-	-	-	-	-	(434)		
													(4,691)		
MILFORD - MONTAGUE															
Toll Lanes	(37)	-	-	-	-	-	-	-	-	-	-	-	(37)	80,246	-0.27%
EZ Pass	(158)	-	-	-	-	-	-	-	-	-	-	-	(158)		
Rejected Items	(20)	-	-	-	-	-	-	-	-	-	-	-	(20)		
													(215)		
ADMINISTRATION															
	-	-	-	-	-	-	-	-	-	-	-	-	-	-	-
TOTALS	(21,813)	-	-	-	-	-	-	-	-	-	-	-	(21,813)	7,074,573	-0.31%

Bracketed figures = shortages
Rejected items are EZ Pass transactions which are uncollectable for various reasons.

DELAWARE RIVER JOINT TOLL BRIDGE COMMISSION

Meeting of February 25, 2008

SUBJECT	DESCRIPTION	PAGE NUMBER
Purchasing	Monthly Purchasing Report Covering the Month of January 2008	1 - 8
Purchasing	Supplemental Monthly Purchase Report Lessor's Maintenance and Service Contracts Expiring Between March 2008 and May 2008	9 - 10

DELAWARE RIVER JOINT TOLL BRIDGE COMMISSION

Meeting of February 25, 2008

MONTHLY PURCHASING REPORT

January 2008

This report itemizes all orders for purchases made for the month of December 2007, showing the divisions chargeable for the expensed and the source of authority for issuance of the purchase order. This authority is broken into three categories:

- (1) By authority of the Commission.
- (2) By authority of the Executive Director or his designate.
- (3) By authority of the Superintendent.

The purchasing activities for the month culminated in the preparation and placement of 137 purchase orders. To secure competitive prices on items being purchased, 73 price inquiries were sent out on 36 groups of inquiries during the month, or an average of 2.3 inquiries for each item or group of items.

In addition to the practices employed incidental to purchase of materials, etc., from vendors on a direct basis, the Commission also purchases via direct utilization of the purchasing processes of the State of New Jersey, and the Commonwealth of Pennsylvania.

* * *

DELAWARE RIVER JOINT TOLL BRIDGE COMMISSION
REPORT OF PURCHASING ACTIVITIES
JANUARY 2008

PO Number	VendorName	Description	Contract / Resolution	** BY AUTHORITY OF **		
				Commission	Director	Dist. Supt.
0034767	INTERNATIONAL SALT COMPANY LLC	SODIUM CHLORIDE ROCK SALT	NJ 70270		69,348.60	
0034768	INTERNATIONAL SALT COMPANY LLC	SODIUM CHLORIDE ROCK SALT	NJ 70270		19,827.50	
0034769	INTERNATIONAL SALT COMPANY LLC	SODIUM CHLORIDE ROCK SALT	NJ 70270		59,716.50	
0034771	E-PLUS TECHNOLOGY OF PA	SERVICE WIDE AREA NETWORK			9,576.00	
0034772	NICHOLAS J BEGOVICH	TOWER RENTAL FOX GAP			15,912.00	
0034774	LEHIGH VALLEY JNTRL SUPPLY CO	ICE MELT			1,462.50	
0034775	CORE MECHANICAL, INC.	HVAC REPAIRS	NJ 64294		600.00	
0034776	CORE MECHANICAL, INC.	HVAC REPAIRS	NJ 64294		564.40	
0034777	DIEBOLD	VAULT REPAIR				237.00
0034778	CRESTON INC.	LIGHT FIXTURE				225.00
0034779	CORE MECHANICAL, INC.	HEATING REPAIR	NJ 64294		673.84	
0034780	THE EXPRESS TIMES	NEWSPAPER SUBSCRIPTION				157.15
0034781	STARR UNIFORM	TOLL UNIFORMS	01-06-07	85.79		
0034782	LANDSMAN UNIFORMS, INC.	MAINTENANCE UNIFORMS	03-06-07	5,499.00		
0034783	STARR UNIFORM	MAINTENANCE UNIFORMS	02-06-07	805.74		
0034784	WOODBURY CEMENT PRODUCTS	CONCRETE			1,800.00	
0034785	CHRIN BROTHERS	CONTRACT FOR TRASH PICK-UP			4,201.32	
0034786	OTIS ELEVATOR COMPANY	CONTRACT FOR ELEVATOR			5,124.32	
0034787	EASTERN TIME, INC.	CONTRACT FOR FIRE ALARM SYSTEM			1,063.00	
0034788	PIPELINE PETROLEUM	CONTRACT FOR GASOLINE	17-03-07	11,999.99		
0034789	PIPELINE PETROLEUM	CONTRACT HEATING OIL	10-03-07	24,999.71		

PO Number	VendorName	Description		Contract / Resolution	** BY AUTHORITY OF **	
					Commission Director	Dist. Supt.
0034790	TUSTIN MECHANICAL SERVICES	CONTRACT HVAC SYSTEM	178			1,920.00
0034791	FARM & HOME OIL COMPANY	CONTRACT DIESEL FUEL	178	12-03-07	21,999.95	
0034792	QUENCH	CONTRACT WATER COOLERS	178			1,440.00
0034793	SIMPLEX GRINNELL	CONTRACT MASTER CLOCK	178			220.00
0034795	CUMMINS-ALLISON CORPORATION	CONTRACT BANKING ROOM MACHINES	178			1,103.00
0034796	CUMMINS-ALLISON CORPORATION	CONTRACT BANKING ROOM MACHINES	EP			1,103.00
0034797	ASSOCIATED FIRE EQUIPMENT	FIRE EXTINGUISHER INSPECTIONS	PC,DWG,MM			1,638.80
0034798	QUENCH	CONTRACT WATER COOLERS	ADM,TM,NHL			2,880.00
0034799	INTERNATIONAL SALT COMPANY LLC	SODIUM CHLORIDE ROCK SALT	TM	NJ 70270		21,792.00
0034800	NAUGHTON ENERGY CORP.	CONTRACT HEATING OIL	TM	08-03-07	23,999.99	
0034801	FARM & HOME OIL COMPANY	CONTRACT GASOLINE	NHL	16-03-07	21,600.00	
0034802	FARM & HOME OIL COMPANY	CONTRACT DIESEL FUEL	NHL	12-03-07	14,400.00	
0034803	FARM & HOME OIL COMPANY	CONTRACT HEATING OIL	NHL	09-03-07	35,999.99	
0034804	EAGLES PEAK	CONTRACT BOTTLED WATER	NHL			1,125.00
0034805	OTIS ELEVATOR COMPANY	CONTRACT FOR ELEVATOR	EP			7,457.13
0034806	AIM EXTERMINATION	CONTRACT PEST CONTROL	EP			4,120.00
0034807	AIM EXTERMINATION	CONTRACT PEST CONTROL	DWG			1,036.00
0034808	AIM EXTERMINATION	CONTRACT PEST CONTROL	178			518.00
0034809	THE PENN CITY ELEVATOR CO INC	CONTRACT FOR ELEVATOR	NHL			1,821.17
0034811	CUMMINS-ALLISON CORPORATION	CONTRACT BANKING ROOM MACHINES	TM			762.00
0034812	GARDA CL ATLANTIC	CONTRACT ARMORED COURIER	ALL DISTRICTS			23,724.06
0034813	ASSOCIATED IMAGING SOLUTIONS	CONTRACT LEASE COPIER/FAX	ADM, TM			24,417.24

PO Number	VendorName	Description		Contract / Resolution	** BY AUTHORITY OF **		
					Commission	Director	Dist. Supt.
0034814	KEY EQUIPMENT FINANCE	CONTRACT LEASE COPIER/FAX	NHL			4,320.00	
0034815	ASSOCIATED IMAGING SOLUTIONS	CONTRACT LEASE COPIER/FAX	EP			2,340.00	
0034816	ASSOCIATED IMAGING SOLUTIONS	CONTRACT LEASE COPIER/FAX	178			3,663.00	
0034817	ASSOCIATED IMAGING SOLUTIONS	CONTRACT LEASE COPIER/FAX	PC,DWG,MM			4,020.00	
0034818	FRANK CONNELL ASSOCIATES	CONTRACT BANKING ROOM MACHINES	MM			890.00	
0034819	FRANK CONNELL ASSOCIATES	CONTRACT BANKING ROOM MACHINES	PC			547.41	
0034820	FRANK CONNELL ASSOCIATES	CONTRACT BANKING ROOM MACHINES	DWG			2,109.70	
0034821	GENESYS CONFERENCE	CONTRACT CONFERENCE CALLS	ADM			4,600.00	
0034822	SERVICE ELECTRIC CABLE TV, INC	CONTRACT TOWER RENTAL	EP			7,680.00	
0034823	CHARLES E. STEUHL & SONS INC.	CONTRACT TRASH PICK-UP	MM			1,200.00	
0034824	TULPEHOCKEN SPRING WATER	CONTRACT BOTTLED WATER	DWG			2,538.96	
0034825	QUENCH	CONTRACT WATER COOLER	EP			1,440.00	
0034826	SENTURY PEST CONTROL	CONTRACT PEST CONTROL	TM			1,080.00	
0034827	HARRY PENN'S GATE POWER	GATE REPAIR	178			2,885.73	
0034828	STARR UNIFORM	TOLL UNIFORMS	178	01-06-07	190.74		
0034829	LEHIGH VALLEY INT'L SUPPLY CO	ICE MELT	EP			2,925.00	
0034830	SOLARWINDS.NET, INC.	CONTRACT MAINTENANCE RENEWAL	IT			359.00	
0034831	DELL MARKETING LP	COMPUTER HARDWARE	IT	NJ 81247		6,397.45	
0034832	MOUNTAIN FUELS	CONTRACT HEATING OIL	MM	11-03-07	22,949.99		
0034833	MOUNTAIN FUELS	CONTRACT DIESEL	MM	14-03-07	9,298.80		
0034834	MOUNTAIN FUELS	CONTRACT GASOLINE	MM	18-03-07	3,999.93		
0034835	MOUNTAIN FUELS	CONTRACT HEATING OIL	DWG	11-03-07	26,450.00		

PO Number	VendorName	Description		Contract / Resolution	** BY AUTHORITY OF **	
					Commission	Director Dist. Supt.
0034836	MOUNTAIN FUELS	CONTRACT DIESEL FUEL	DWG	14-03-07	16,899.99	
0034837	MOUNTAIN FUELS	CONTRACT DIESEL FUEL	PC	14-03-07	8,499.99	
0034838	PIPELINE PETROLEUM	CONTRACT HEATING OIL	PC	10-03-07	20,000.00	
0034839	PIPELINE PETROLEUM	CONTRACT GASOLINE	PC	17-03-07	3,999.93	
0034840	PIPELINE PETROLEUM	CONTRACT GASOLINE	DWG	17-03-07	7,999.86	
0034841	DFM ENTERPRISES, INC.	BRIDGEMASTER INSPECTION	PC,DWG,MM			9,400.00
0034843	GRAINGER	WATER HEATER	TM			3,117.60
0034844	TROIL ENTERPRISES	MOTOR OIL	TM			522.50
0034845	TUSTIN MECHANICAL SERVICES	BOILER REPAIR	178			207.00
0034846	METZ COMPANY	CONTRACT HVAC SYSTEM	EP			1,140.00
0034847	WAYMAN FIRE PROTECTION, INC.	CONTRACT FIRE ALARM	EP			835.00
0034848	MCCARTHY TIRE SERVICE	TIRES	EP			244.70
0034849	OFSI	CONTRACT LEASE COLOR COPIER	PRINT SHOP			5,364.00
0034850	OCE IMAGISTICS INC.	CONTRACT COLOR COPIES	PRINT SHOP			4,410.00
0034851	MUNICIPAL MAINTENANCE CO., INC	MAINTENANCE INSPECTION	178			1,025.00
0034852	ALLSTATE SEPTIC SYSTEMS	RENTAL OF PORTABLE TOILET	EP			510.00
0034853	INTERNATIONAL SALT COMPANY LLC	SODIUM CHLORIDE ROCK SALT	NH	NJ 70270		21,992.00
0034854	CUMMINS POWER SYSTEMS INC	CONTRACT EMERGENCY GENERATOR	NHL			1,350.00
0034855	PIPELINE PETROLEUM	CONTRACT GASOLINE	EP	17-03-07	10,000.00	
0034856	PIPELINE PETROLEUM	CONTRACT DIESEL FUEL	EP	13-03-07	7,000.00	
0034857	NAUGHTON ENERGY CORP.	CONTRACT GASOLINE	TM	15-03-07	17,999.99	
0034858	FARM & HOME OIL COMPANY	CONTRACT DIESEL FUEL	TM	12-03-07	12,000.00	

PO Number	Vendor Name	Description	Contract / Resolution	Commission	Director	Dist. Supt.
0034859	THE HON COMPANY	OFFICE CHAIR	DWG		327.08	
0034860	BIRD CONTROL SERVICES	CONTRACT BIRD CONTROL	PC,DWG,MM		1,011.00	
0034861	BIRD CONTROL SERVICES	CONTRACT BIRD CONTROL	EP		2,361.00	
0034862	WILSON PRODUCTS COMPRESSED GAS	ACETYLENE & OXYGEN	178		932.62	
0034863	WILSON PRODUCTS COMPRESSED GAS	ACETYLENE, OXYGEN & PROPANE	EP		533.16	
0034864	CUMMINS-ALLISON CORPORATION	CURRENCY COUNTER	NHL		3,033.57	
0034865	CUMMINS-ALLISON CORPORATION	CURRENCY COUNTER & JETSORT	TM		9,435.00	
0034866	PISCOPO BROS. GARAGE	PA INSPECTIONS	TM			225.21
0034867	LINCOLN SUPPLY	PLUMBING SUPPLIES	TM		425.03	
0034868	CORE MECHANICAL, INC.	HEATING REPAIR	NHL		599.69	
0034869	SET RITE CORPORATION	GARAGE DOOR REPAIR	TM		316.00	
0034870	S & G WATER CONDITIONING	QUARTERLY WATER TESTING	NHL			235.00
0034871	J. WALTER LIVEZEY & SONS	ROOF REPAIR	NHL			200.00
0034872	COMMERCIAL INTERIORS DIRECT	CARPET INSTALLATION	ADM		2,725.85	
0034873	MILLER SAFETY & FIRST AID PROD	SAFETY SUPPLIES	TM		480.71	
0034874	SUPERHEAT	CONTRACT HVAC SYSTEM	PC,DWG,MM		7,200.00	
0034875	JOHNSTONE SUPPLY	HEATING SYSTEM PUMP	DWG		178.96	
0034876	THE HOME DEPOT	PORTABLE TOILET	NHL		1,603.85	
0034877	THE HON COMPANY	OFFICE FURNITURE	EP	PA COSTARS	4,426.24	
0034878	THE HON COMPANY	OFFICE FURNITURE	ADM	PA COSTARS	345.28	
0034879	INDUSTRIAL SUPPLIES COMPANY	TOOLS	EP		538.88	
0034880	MILLER SAFETY & FIRST AID PROD	FIRST AID SUPPLIES	EP		1,289.13	

PO Number	VendorName	Description	Contract / Resolution	Commission	Director	Dist. Supt.
0034881	GRAINGER	TOOLS TM			1,045.04	
0034882	S & S IND EQUIPMENT SUPPLY CO	TOOLS EP			220.46	
0034883	SIGNAL CONTROL PRODUCTS	TRAFFIC SIGNALS NHL			174.00	
0034884	A & M INDUSTRIAL	TOOLS EP	NJ 66328		168.56	
0034885	MONTAGUE TOOL & SUPPLY CO INC	TOOLS DWG			1,173.12	
0034886	EAST COAST EMERGENCY LIGHTING	POWER SUPPLIES NHL			621.26	
0034887	A & M INDUSTRIAL	TOOLS EP	NJ 66328		208.31	
0034888	STAPLES BUSINESS ADVANTAGE	OFFICE SUPPLIES ADM			1,073.55	
0034889	HORLE'S OFFICE SUPPLIES	OFFICE SUPPLIES EP			240.60	
0034890	EMERGENCY SYSTEMS SER CO	CONTRACT EMERGENCY GENERATORS PC,DWG,MM			1,848.85	
0034891	TRANSCORE	RADIO REPAIR DWG				247.50
0034892	SEELY EQ/MODERN CONST. CO GENERAL RESERVE	JETTER HOSE EP			1,475.00	
0034893	METZ COMPANY	BOILER REPAIR EP			859.84	
0034894	LANDSMAN UNIFORMS, INC.	MAINTENANCE UNIFORMS 178	03-06-07	3,142.94		
0034895	STARR UNIFORM	TOLL UNIFORMS 178	01-06-07	799.74		
0034896	STOCKER'S COLLISION SERVICE	AUTO BODY REPAIR EP			1,595.20	
0034897	MARK IV IVHS, INC.	CIRCUIT BOARD REPAIRS ADM			868.04	
0034898	SET RITE CORPORATION	MAINTENANCE GARAGE DOORS EP			1,800.00	
0034899	CRAFCO	ASPHALT SEALER EP			4,250.00	
0034900	DELL MARKETING LP	COMPUTERS IT	NJ 81247		6,263.20	
0034901	CUMMINS POWER SYSTEMS INC	CONTRACT EMERGENCY GENERATORS TM			2,395.00	
0034902	WASTE MANAGEMENT OF SE PA	CONTRACT TRASH PICK-UP NHL			3,546.12	

PO Number	VendorName	Description	Contract / Resolution	** BY AUTHORITY OF **		
				Commission	Director	Dist. Supt.
0034903	WASTE MANAGEMENT OF PA INC	CONTRACT TRASH PICK-UP	TM		4,851.00	
0034904	WASTE MANAGEMENT	CONTRACT TRASH PICK-UP	PC		1,131.00	
0034905	WASTE MANAGEMENT	CONTRACT TRASH PICK-UP	DWG		3,120.00	
0034906	WARREN COUNTY SERVICE CTR INC	GARDEN TOOLS	PC		515.00	
0034907	INDUSTRIAL SUPPLY II:S COMPANY	TOOLS	TM		550.68	
0034908	S & S IND EQUIPMENT SUPPLY CO	TOOLS	TM		309.34	
GRAND TOTALS				332,622.06	460,233.65	1,733.86

DELAWARE RIVER JOINT TOLL BRIDGE COMMISSION

Meeting of February 25, 2008

**SUPPLEMENTAL MONTHLY PURCHASING REPORT
LESSOR'S MAINTENANCE AND SERVICE CONTRACTS
EXPIRING BETWEEN MARCH 2008 AND MAY 2008**

As requested by Commission Members at the August 31, 1998 meeting, reproduced hereunder are all lessor's maintenance and service contracts that will expire within a three-month period, from March 2008 through May 2008.

A compendium of existing lessor's maintenance and service contracts has been transmitted to all Commission Members under separate cover.

ACTION RECOMMENDED

Adopt a Resolution authorizing receipt and filing of the report.

LESSOR'S, MAINTENANCE AND SERVICE CONTRACTS ADMINISTRATION			
LESSOR	CONTRACT AMOUNT	DESCRIPTION OF SERVICES	CONTRACT PERIOD
Brittain-Parnell Signs Inc	\$11,590.00	Maintenance contract for Trenton Makes Sign	5/1/07 through 4/30/08 (1 st year of a 2 year contract) (Optional 3 rd year)

LESSOR'S MAINTENANCE AND SERVICE CONTRACTS TRENTON-MORRISVILLE			
LESSOR	CONTRACT AMOUNT	DESCRIPTION OF SERVICES	CONTRACT PERIOD
Otis Elevator Company	\$7,823.92	Service contract for elevator	5/1/07 through 4/30/08

LESSOR'S, MAINTENANCE AND SERVICE CONTRACTS EASTON-PHILLIPSBURG			
LESSOR	CONTRACT AMOUNT	DESCRIPTION OF SERVICES	CONTRACT PERIOD
Bird Control Services	\$2,220.00	Bird control for EP toll bridge and district 2 toll supported bridges	4/1/07 through 3/31/08

DELAWARE RIVER JOINT TOLL BRIDGE COMMISSION

Meeting of February 25, 2008

COMMUNICATIONS REPORT

SUBJECT	DESCRIPTION	PAGE NUMBER
Communications	Communications Report	1

DELAWARE RIVER JOINT TOLL BRIDGE COMMISSION

COMMUNICATIONS REPORT

February 2008

- **COMMISSION AWARENESS EFFORTS :**

Annual Report: The Commission's annual report has been printed and is in the process of being distributed to key elected officials within the Commission's jurisdiction and officials with neighboring transportation agencies. I would ask all departments to keep in mind that we have additional copies of the annual report and I would encourage you to bring them with you to any public events, such as E-ZPass sign ups, community meetings, or meetings with elected officials..

Website updates: The Communications Department has revised various portions of the website in an effort to provide the public with the most up to date website. We are also working with the IT and Engineering Departments to expand the Doing Business section of the website, with the eventual goal of posting contract bid information in addition to the existing procurements for professional services.

Scudder Falls Toll Supported Bridge: Communications worked to provide WZBN in Trenton with historical information and photographs of the Scudder Falls Bridge for a historical segment on the bridge

- **MEDIA RELATIONS:**

Hot Topics: I-78, Milford-Montague and various CAI projects;

- **CAPITAL IMPROVEMENT PROGRAM ACTIVITIES:** The Communications Department continues to work with engineering in advancing capital projects and highlighting the start and completion of projects. In January, Communications attended the partnering session and a progress meeting for the Milford-Montague Toll Bridge rehabilitation project, as well as progress meetings on the Electronic Surveillance/Detection System, and a workshop on establishing guidelines for future public involvement programs in connection with the capital improvement program.
- **COMMUNITY AFFAIRS:** (Please refer to Community Affairs Report)
- **E-ZPASS ACTIVITIES:** (Please refer to E-ZPass Report)

DELAWARE RIVER JOINT TOLL BRIDGE COMMISSION

Meeting of February 25, 2008

**COMMUNITY AFFAIRS REPORT
MONTH OF JANUARY 2008**

SUBJECT	DESCRIPTION	PAGE NUMBER
Community Affairs	Community Affairs Report For the month of January	1

DELAWARE RIVER JOINT TOLL BRIDGE COMMISSION

Meeting of February 25, 2008

COMMUNITY AFFAIRS REPORT MONTH OF JANUARY 2008

The following activities under the general heading of community relations/governmental affairs have recently taken place.

- ❖ A second meeting under Public Involvement Guidelines Task Order Agreement C-449B-5 to review and provide suggestions for revision of draft guidelines on public involvement guidelines for capital projects that is being prepared for presentation to the Commission was held on January 29. The meeting included Commission staff and consultants with experience in previous capital project public involvement efforts. Information from this meeting will be used to refine the existing draft further to make it a useful tool for the preparation and planning of future capital projects.
- ❖ Community Affairs staff participated in ongoing progress meetings for T424A I-78 roadway resurfacing and contributed to the development of plans to communicate speed limit and lane changes along the entire construction zone.
- ❖ Community Affairs staff participated in a series of progress meetings and a Senior Partnering Meeting for the T-380B Trenton Morrisville Toll Bridge Rehab. In addition the staff, in cooperation with the project's Resident Engineer met with, and resolved the concerns of, area residents who had expressed problems with aspects of the bridge construction which impacted the local neighborhood.
- ❖ Community Affairs staff represented the Commission at monthly meeting of the Lower Bucks Chamber of Commerce Transportation Committee.
- ❖ The Community Affairs Department participated in the partnering meeting and subsequent progress meeting for the T-430A Milford Montague Toll Bridge Rehab as well as led a strategy session for the development of public official briefing materials for presentation to municipal officials near the bridge site in February.
- ❖ Community Affairs staff evaluated a proposal for Commission support of a major symposium by the Delaware River Greenway on the river's ecological, historical and cultural impacts on life along the river with a recommendation for participation in both support and participation

Delaware River Joint Toll Bridge Commission
Meeting of January 28, 2008

**January 2008
E-ZPass Report**

**ACS CUSTOMER SERVICE CENTER (CSC)
OPERATION REPORT FOR THE E-ZPASS SYSTEM**

SUBJECT	DESCRIPTION	PAGE NUMBER
Management Operations	Management Operations Report E-ZPass Report January	1-5

Delaware River Joint Toll Bridge Commission
Meeting of January 28, 2008

**January 2008
E-ZPass Report**

**ACS CUSTOMER SERVICE CENTER (CSC)
OPERATION REPORT FOR THE E-ZPASS SYSTEM**

ACS has submitted an Operations Report that summarizes E-ZPass tag and account information for January. Key statistics presented in the report are as follows:

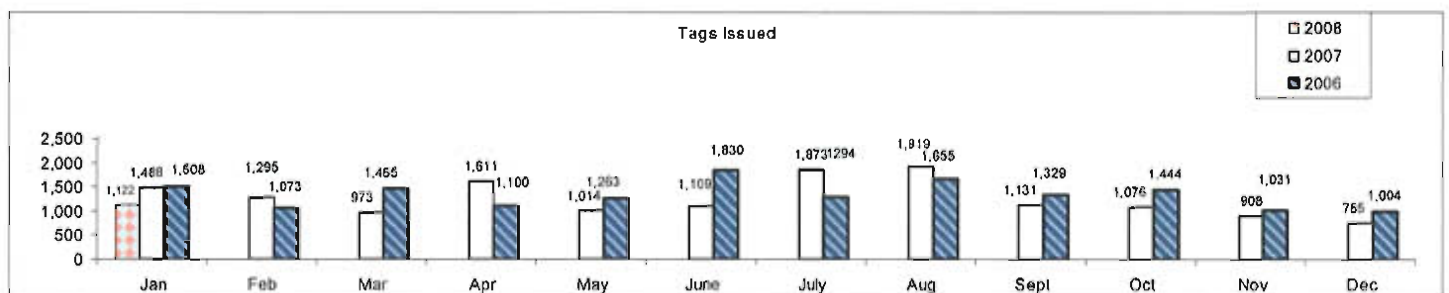
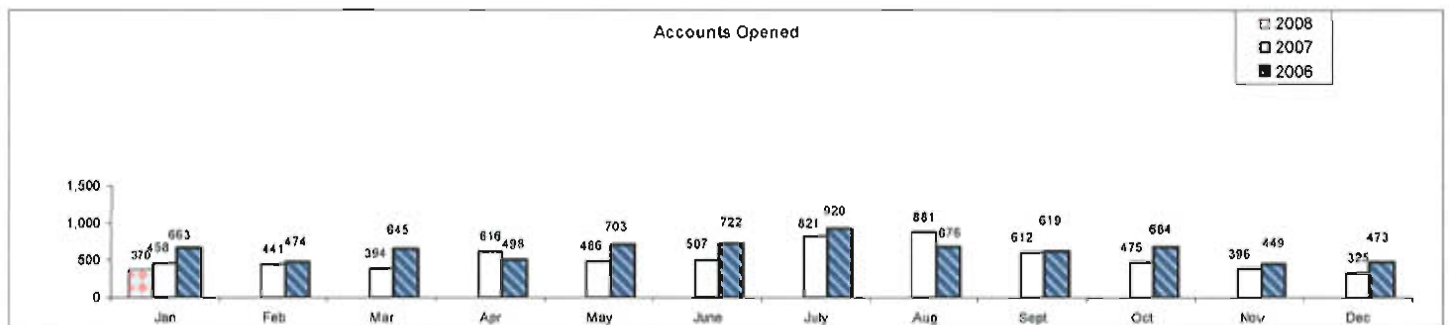
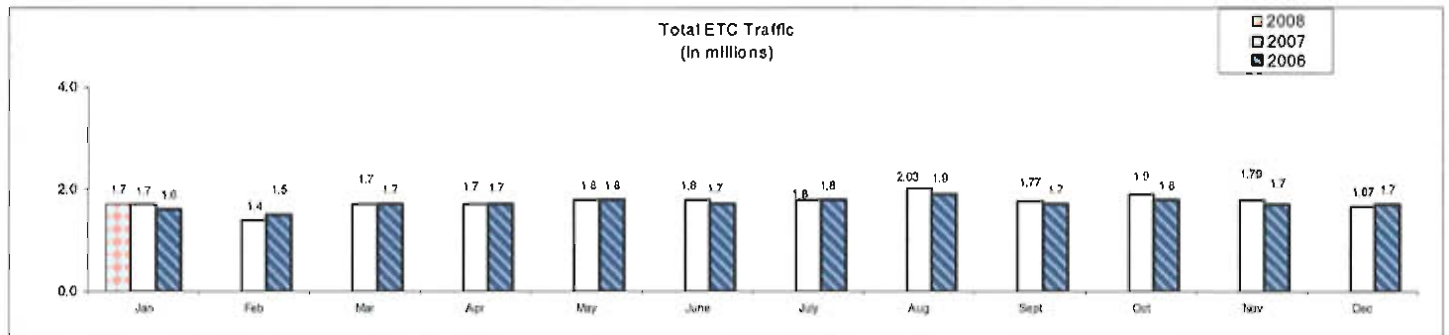
ACS CSC January 2008 Reported Activity	January
Total Active Tags	114,133
Total Accounts	62,676
% Private Accts	97.6%
% Business Accts	2.1%
% Non Revenue Accts	0.3%
Avg. No. of Tags Issued per Day	53
Avg. No. of Accounts Opened per Day	18
Avg. No. of Calls per Day	367
Mail-in Applications	98
Phone and Web Applications	272

Reviewing Tag Activity from December to January indicates an increase in Total Active Tags of 954. An increase in Total Accounts was reported with 370 for the same time period.

Delaware River Joint Toll Bridge Commission
Meeting of January 28, 2008

**January 2008
E-ZPass Report**

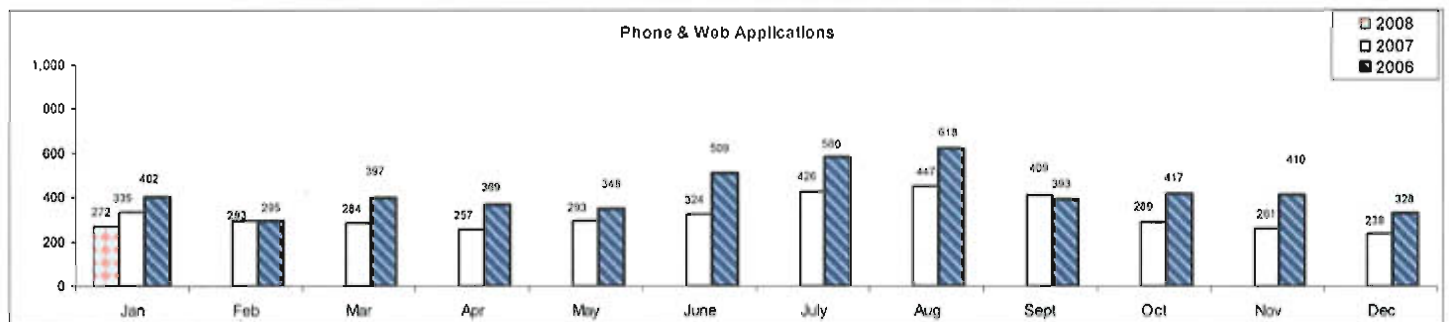
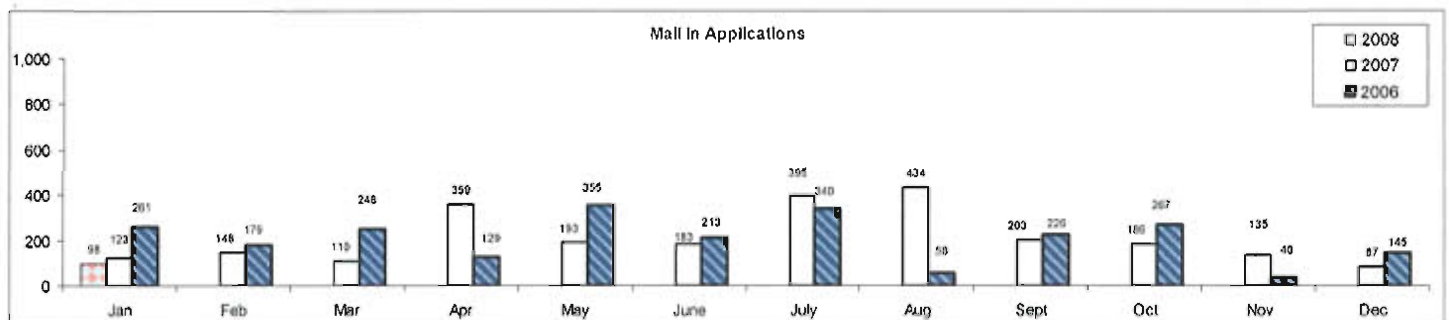
**ACS CUSTOMER SERVICE CENTER (CSC)
OPERATION REPORT FOR THE E-ZPASS SYSTEM**



Delaware River Joint Toll Bridge Commission
Meeting of January 28, 2008

**January 2008
E-ZPass REPORT**

**ACS CUSTOMER SERVICE CENTER (CSC)
OPERATION REPORT FOR THE E-ZPASS SYSTEM
(Continued)**



Delaware River Joint Toll Bridge Commission
Meeting of January 28, 2008

**January 2008
E-ZPass REPORT**

**E-ZPASS DEPARTMENT
OPERATION REPORT FOR THE E-ZPASS SYSTEM
(Continued)**

The E-ZPass Department has submitted an Operations Report that summarizes E-ZPass customer service call activity for the month of January. Key statistics in the report are as follows:

<u>E-ZPASS DEPARTMENT CSC CALL ACTIVITY</u>	Total Calls for the Month of January
Calls Referred to ACS	61
Replenishment Inquiries	23
Billing Inquiries	22
Account Modification Requests	16
E-ZPass Inquiries	12
Individual Applications Requested	7
Commercial Applications Requested	0
Transponder Returns	4
RV Overcharge	0
Toll Dispute	1
DRJTBC Inquiries	3
I-78 Welcome Center E-ZPass QuickStart	0
I-78, I-80 Traffic Calls	1
Crossings Premium Outlet Center E-ZPass QuickStart	0
Fairless Hills Elks Lodge E-ZPass QuickStart	0
Toll Rate	1
Token Redemption	1
Total Number of Calls	76

Delaware River Joint Toll Bridge Commission
Meeting of January 28, 2008

**January 2008
E-ZPass REPORT**

**E-ZPASS DEPARTMENT
OPERATION REPORT FOR THE E-ZPASS SYSTEM
(Continued)**

E-ZPass QuickStart Outreach Campaigns	Date of Event	Transponders Issued
Fairless Hills Elks Lodge Morrisville, Pa	1/4/08	7
I-78 Welcome Center Northampton County, Pa	1/10/08	9
I-78 Welcome Center Northampton County, Pa	1/11/08	26
Fairless Hills Elks Lodge Morrisville, Pa	1/11/08	13
I-78 Welcome Center Northampton County, Pa	1/17/08	1
I-78 Welcome Center Northampton County, Pa	1/18/08	8
Fairless Hills Elks Lodge Morrisville, Pa	1/18/08	10
I-78 Welcome Center Northampton County, Pa	1/31/08	12
		Total
		86

In January, the E-ZPass Department provided preprogrammed transponders to motorists at the Fairless Hills Elks Lodge and the I-78 Welcome Center. The Commission issued 86 preprogrammed transponders.

E-ZPass campaigns will continue in Districts I, II and III.

DELAWARE RIVER JOINT TOLL BRIDGE COMMISSION

Meeting of February 25, 2008

POLICY AND PLANNING REPORT

January 2008

SUBJECT	DESCRIPTION	PAGE NUMBER
Policy and Planning	Policy and Planning Report Month of January 2008	1 - 2

DELAWARE RIVER JOINT TOLL BRIDGE COMMISSION

Meeting of February 25, 2008

POLICY AND PLANNING REPORT

JANUARY 2008

During the month of January, 2008 the Director of Policy and Planning participated in a number of communications and meetings that explored the following:

The Director met with Lehigh County Executive Don Cunningham.

The Greater Lehigh Valley Chamber of Commerce Transportation Committee viewed and heard a presentation by the Pennsylvania Turnpike Commission concerning the I-80 Toll Conversion Improvement Project.

The Greater Pocono Chamber of Commerce Government Affairs Committee heard an update by Pennsylvania State Representative Mike Carroll (D-118) concerning the I-80 Toll Conversion Improvement Project. A member of State Senator Lisa Boscola's (D-18) staff discussed her ice and snow bill.

The Delaware Valley Regional Planning Commission's Planning Coordinating Committee and Regional Transportation Committee viewed and heard a presentation dealing with PhillyCarShare.

The Greater Pocono Chamber of Commerce Economic Development / Transportation Committee heard and discussed a presentation by the Pocono Mountains Economic Development Corporation concerning the Wall Street West Project.

The Director attended the Delaware River Joint Toll Bridge Commission's I-78 Roadway Rehabilitation Progress and Schedule Update Meeting.

The Greater Lehigh Valley Chamber of Commerce Public Policy Committee discussed Pennsylvania tax reform, healthcare, and transportation issues.

The Pike County Road Task Force was given an update by the Director concerning our Milford-Montague Toll Bridge Rehabilitation Project. PennDOT District 4 discussed current area projects including winter maintenance.

The Lehigh Valley Transportation Study Technical Committee discussed their Draft 2009-2012 Transportation Improvement Program (TIP) for bridges, highways, and Act 44 projects.

The Delaware Valley Regional Planning Commission's Board and Executive Committee's Meetings included the adoption of the Fiscal Year 2009 Unified Planning Work Program, the adoption of the Public Participation Plan: A Strategy for Citizen Involvement, and a contract authorization for a public awareness campaign to Taft and Partners of Princeton, New Jersey.

DELAWARE RIVER JOINT TOLL BRIDGE COMMISSION

Meeting of February 25, 2008

The Warren County Regional Chamber of Commerce Economic Development / Transportation Council were given an update by the Director concerning the I-78 Roadway Rehabilitation Project, and we were also given a report on the status of countywide economic development related efforts.

The Greater Lehigh Valley Chamber of Commerce 6th Annual Economic Outlook Luncheon & Community Investment Awards Presentation was highlighted by Dr. John Silvia, Wachovia's Chief Economist, who stated that the United States is on the edge of economic recession but the Lehigh Valley region is holding up fairly well.

EXTERNAL MEETINGS FOR JANUARY

Meeting with Lehigh County Executive Don Cunningham
Greater Lehigh Valley Chamber of Commerce Transportation Committee
Greater Pocono Chamber of Commerce Government Affairs Committee
Delaware Valley Regional Planning Commission Planning Coordinating Committee
Delaware Valley Regional Planning Commission Regional Transportation Committee
Greater Pocono Chamber of Commerce Economic Development / Transportation Committee
Delaware River Joint Toll Bridge Commission I-78 Roadway Rehabilitation Progress and Schedule Update Meeting
Greater Lehigh Valley Chamber of Commerce Public Policy Committee
Pike County Road Task Force
Lehigh Valley Transportation Study Technical Committee
Delaware Valley Regional Planning Commission Board Meeting
Delaware Valley Regional Planning Commission Executive Committee
Warren County Regional Chamber of Commerce Economic Development / Transportation Council
Greater Lehigh Valley Chamber of Commerce 6th Annual Economic Outlook Luncheon & Community Investment Awards Presentation.

DELAWARE RIVER JOINT TOLL BRIDGE COMMISSION

Meeting of February 25, 2008

**HUMAN RESOURCE AFFIRMATIVE ACTION AND SECURITY,
SAFETY AND TRAINING**

**WILLIAM HODAS (Chairman), (New Jersey)
THOMAS SUMNERS, (New Jersey)
BERNARD GRIGGS, (Pennsylvania)
J. ALAN FOWLER, (Pennsylvania)**

The following pages reflect a report on those items assigned to the Human Resources Committee.

Each item is reported separately and page numbered accordingly hereunder.

DELAWARE RIVER JOINT TOLL BRIDGE COMMISSION

Meeting of February 25, 2008

DEPARTMENT OF SECURITY, SAFETY & TRAINING

JANUARY 2008

SUBJECT	DESCRIPTION	PAGE NUMBER
Department of Security, Safety & Training	Month of January Status Reports	1 - 3

DELAWARE RIVER JOINT TOLL BRIDGE COMMISSION

Meeting of February 25, 2008

DEPARTMENT OF SECURITY, SAFETY & TRAINING

JANUARY 2008

The following is a list of activities involving the Security Safety and Training Department for the month of January 2008.

January 2nd Meeting of T-380B T-M Toll Bridge Rehabilitation
January 4th SDTS/NDTS Bridge Officer training at New Hope Lambertville, training was Nomenclature of Bridge presented by Engineering Department and Slip and Fall Safety suggestions.
January 8th Green Team Meeting at Easton/Phillipsburg
January 8th conference call on Safety Audit on Road Construction
January 9th Workman's compensation Meeting with PMA Group in Allentown Pa. on process of initiating the Beyond Zero Tolerance Policy
January 10th T-424A I-78 Roadway Rehabilitation Project meeting at Phillipsburg
January 11th DRJTBC Staff meeting at New Hope Lambertville
January 17th T-430A Milford Montague Partnering meeting New Hope
January 18th Meeting with new Station Commander NJSP Washington
January 24th Superintendents Operations Meeting Easton / Phillipsburg
January 28th DRJTBC Commission Meeting
January 28th NHL small conference room Trooper coverage for ESS project
January 30th NJSP Radio Technology meeting at the ROIC Trenton NJ
January 31st Workplace Safety Committee Meeting at Easton/Phillipsburg

The workplace safety committee at its regular monthly meeting digested the roll out of the Beyond Zero tolerance initiative, with suggestions that in place of the Savings bond for a suggestion that is adopted by the Commission, a \$50.00 gift card be used instead. The first item in workman's compensation injury reports that the committee will research and focus on was Slips and Falls, as identified as the largest cause for concern by the PMA group. Awaiting input from the district Superintendents to finalize the process in adopting the effort behind the Beyond Zero approach.

January 2008

Bridges	N/R Accidents		Traffic Accidents		Motorist Assists		Other	
	NJ	PA	NJ	PA	NJ	PA	NJ	PA
Milford-Montague 40	0	0	0	0	0	0	1	0
Delaware Water Gap 41	0	0	0	0	2	0	0	3
Portland Pedestrian 42	0	0	0	0	0	0	0	0
Portland – Columbia 43	0	0	0	0	0	0	0	0
Riverton – Belvidere 44	0	0	0	0	0	0	2	0
Rt 22 EP 45	0	1	0	0	4	0	30	1
Northampton St 46	0	0	0	0	0	0	6	1
I-78 47	0	2	0	1	16	2	370	15
Riegelwsville	0	0	0	0	0	0	0	0
Upper Black Eddy Milford 49		0		0		0		0
Uhlerstown Frenchtown 50	0	0	0	0	0	0	0	0
Lumberville Raven Rock 51	0	0	0	0	0	0	0	0
Centre Bridge Stockton 52	0	0	0	0	0	0	1	0
New Hope Lambertville Toll 53	0	0	0	0	0	0	13	1
New Hope Lambertville 54	0	0	0	0	0	0	5	1
Washington Crossing	0	1	0	0	0	0	2	1

55								
Scudder Falls 56	0	1	0	0	4	3	4	2
Lower Trenton 58							1	
Morrisville Trenton 59	0	7	0	0	0	0	1	5

	Citations	Warnings	Security Checks
New Jersey State Police	91	42	1,041
Pennsylvania State Police	425	227	1,295

DELAWARE RIVER JOINT TOLL BRIDGE COMMISSION

Meeting of February 25, 2008

Operations Report Index

ELECTRONIC SECURITY AND SURVEILLANCE REPORT

Subject	Description	Page Numbers
Electronic Security and Surveillance	Status Report for the Month of January 2008	1-3

DELAWARE RIVER JOINT TOLL BRIDGE COMMISSION

Meeting of February 25, 2008

ELECTRONIC SECURITY AND SURVEILLANCE REPORT MONTH OF JANUARY 2008

The below-listed items represent meetings, communications, tasks, and projects involving Electronic Security and Surveillance:

- On January 3, 2008, attended a pre-activity meeting for the ESS camera survey at the Delaware Water Gap. In attendance were representatives from District III, MEC, Siemens, and J. Fletcher Creamer. During this meeting it was noted that MEC had not received an approved NJDOT MPT.

Also met with Superintendent Hill and Foreman Chirico, District III, to review the employee access rights for security points at Delaware Water Gap, Milford-Montague, and Portland-Columbia.

- Created camera survey sheet to prioritize the viewing schedule for the cameras installed on the various bridges and infrastructure. To date, a tentative priority viewing schedule has been created for the following bridges:
 - Delaware Water Gap
 - Milford-Montague
 - Easton-Phillipsburg
 - Northampton
 - I-78
- On January 4, 2008, met with the IT Department to discuss access rights to IT rooms and Telco rooms located in various DRJTBC facilities.
- On January 7, 2008, met with Mr. Tolotta to discuss the current and future radio system to be utilized by the DRJTBC. Subsequent to this meeting research was conducted concerning the feasibility of repairing the existing DRJTBC radio system or partnering with the New Jersey State Police to utilize their current 800 MHz radio system. Preliminary analysis conducted by Jacobs, Edwards, and Kelsey of the DRJTBC radio system was acquired. Thereafter, direction was received to pursue partnering with the New Jersey State Police.
- On January 8, 2008, attended an ESS progress meeting at New Hope with Jacobs, Edwards, and Kelsey, Mass. Electric Company, and DRJTBC Engineering personnel. Traffic management plans and camera layouts were discussed.

DELAWARE RIVER JOINT TOLL BRIDGE COMMISSION

Meeting of February 25, 2008

ELECTRONIC SECURITY AND SURVEILLANCE REPORT MONTH OF JANUARY 2008

- On January 10, 2008, attended the first ESS camera design review meeting at Mass. Electric Company, Frenchtown, N.J.
- On January, 16, 2008, attended a project status meeting at Jacobs, Edwards, and Kelsey, concerning the progress of the ESS. Discussed traffic management plans, back up power supplies for the ESS, placement of electrical conduit, and the design and placement of camera junction boxes. Cameras manufactured by Bosch were selected by Mass. Electric Company to be utilized in the ESS project.
- On January, 18, 2008, attended an internal meeting with Engineering regarding ESS. At this meeting it was determined that recommendations and operational concerns regarding the ESS project would be reported to Engineering (Roy Little).
- Arranged for ESS, Security, Safety, and Training personnel to attend a seminar being sponsored by the New Jersey Office of Homeland Security and Protection on February 20, 2008, regarding threats to bridges and tunnels.
- Prepared a PowerPoint presentation for the Superintendent's/Operation's meeting on January 24, 2008, regarding the camera survey being utilized to prioritize the camera viewing schedule of each bridge, and the prospective radio system to be utilized by the DRJTBC.
- Arranged for, and coordinated a traffic slow down for the ESS contractor on January 23, 2008, utilizing the New Jersey State Police, to accomplish a video assessment survey at the Delaware Water Gap.
- On January, 24, 2008, attended a Superintendent's/Operation's meeting at Easton-Phillipsburg. Presented a PowerPoint presentation concerning ESS, camera surveys, and the prospective DRJTBC/New Jersey State Police radio system.
- On January 28, 2008, attended a meeting at New Hope Toll with Mr. Tolotta, Engineering, Accounting, and Security, Safety, and Training personnel regarding the payment/reimbursement of money paid to both State Police agencies for MPT performed during ESS surveys and construction.

DELAWARE RIVER JOINT TOLL BRIDGE COMMISSION

Meeting of February 25, 2008

ELECTRONIC SECURITY AND SURVEILLANCE REPORT MONTH OF JANUARY 2008

- On January 30, 2008, attended a meeting with Frank Tolotta, Frank Beruta, and Michael Cane, at the New Jersey State Police (NJSP) Regional Operations Intelligence Center (ROIC) to discuss the DRJTBC utilizing the State Police 800 MHz radio system to replace the existing DRJTBC radio system. During this meeting the State Police agreed to allow the DRJTBC to utilize their radio system and offered the DRJTBC however many radio channels deemed necessary. The State Police also confirmed their commitment to monitor the ESS system and provide dispatching services to the DRJTBC. All commitments will be consummated by use of an MOU in July 2008.
- On January 31, 2008, attended a design and project status meeting at Mass. Electric Company concerning the ESS. During the meeting various submittals were discussed, along with the new access system and camera designs at the Delaware Water Gap and I-78. An ambitious target date of February 25, 2008, has been set for the start of ESS construction at the Delaware Water Gap.
- During the month, continuous work has been performed on evaluating the existing DRJTBC radio system. An inventory of the current radios is being completed by all three Districts. An assessment of the DRJTBC's future radio needs is also being conduct. Future meetings are scheduled with the New Jersey State Police Radio and Electronic Maintenance Unit to discuss and determine the radio channels that will be utilized by the DRJTBC.
- Accompanied the ESS contractor(s) on video surveys at the following bridges:
 - Delaware Water Gap (survey complete)
 - Easton-Phillipsburg (survey complete)
 - Northampton (survey complete)
 - I-78 (survey complete)
 - Scudder Falls (survey complete)
 - Calhoun Street (survey complete)
 - Lower Trenton (survey complete)
 - Portland-Columbia (survey complete)
 - Trenton-Morrisville (pending)

DELAWARE RIVER JOINT TOLL BRIDGE COMMISSION

Meeting of February 25, 2008

PROJECTS, PROPERTY AND EQUIPMENT COMMITTEE REPORT

BERNARD GRIGGS (Chairman), (Pennsylvania)

GAETAN ALFANO, (Pennsylvania)

DONALD HART, (New Jersey)

WILLIAM HODAS, (New Jersey)

The following pages reflect a report on those items assigned to the Projects, Property and Equipment Committee.

Each item is reported separately and page numbered accordingly hereunder.

DELAWARE RIVER JOINT TOLL BRIDGE COMMISSION

Meeting of February 25, 2008

CONTRACT NUMBER	CONTRACT DESCRIPTION	PAGE NUMBER
380A/B <i>CTH/DGF</i>	Trenton-Morrisville (Route 1) Toll Bridge Rehabilitation and Addition of One Auxiliary Northbound Lane <ul style="list-style-type: none"> Design C-380A CM/CI CM-380B Construction T-380B 	1-2
393A <i>GGA</i>	Preliminary Engineering and Environmental Documentation for I-95/Scudder Falls Toll Supported Bridge <ul style="list-style-type: none"> Study C-393A 	2
395A <i>WMC/RWL</i>	Northerly Crossing Corridor Congestion Mitigation Study <ul style="list-style-type: none"> Study C-395A 	3
396A <i>WMC/RWL</i>	Electronic Surveillance / Detection System Program Manager <ul style="list-style-type: none"> Program Manager C-396A Design-Build-Maintain DB-396A 	3-4
397B <i>RJZ/RWL</i>	New Hope-Lambertville Toll Bridge Administration Building Renovations and Addition <ul style="list-style-type: none"> Design C-397B Construction Administration CM-397B Construction T-397B 	4-5
412A <i>CAS/GGA</i>	Inter-Agency Group RFP Consultant <ul style="list-style-type: none"> C-412A-11 	5

Project Manager Legend

GGA – G. Alexandridis
CAB – C. Baker
WMC – W. Cane
JMD – J. Dargan
JBK – J. Fazio
VMF – V. Fischer
CTH – C. Harney
RJL – R. Lamb

RWL – R. Little
RSL – R. Luciani
MEM – M. McCandless
RLM – R. McClellan
CLR – C. Rood
CAS – C. Straccioli
RJZ – R. Zakharia

Program Area Manager Legend

GGA – G. Alexandridis
DGF – D. Faust
RWL – R. Little
CLR – C. Rood
LMS – L. Spalinski

Note: The first set of initials indicate the Project Manager and the second set of initial indicate the Program Area Manager

DELAWARE RIVER JOINT TOLL BRIDGE COMMISSION

Meeting of February 25, 2008

CONTRACT NUMBER	CONTRACT DESCRIPTION	PAGE NUMBER
424A <i>CLR/DGF</i>	I-78 Roadway Rehabilitation Contract <ul style="list-style-type: none"> Design C-424A CM/CI CM-424A Construction T-424A 	6
425A <i>JMD/RWL</i>	NJDEP & PADEP Municipal Storm Water Compliance Program Consulting Services <ul style="list-style-type: none"> Portland Borough Sewer Force Main Connection Location Design C-425A-9 	7
427B <i>CAS/RWL</i>	I-78 Open Road Tolling Lanes Design Contract <ul style="list-style-type: none"> Design C-427B 	8
430A <i>RJL/CLR/DGF</i>	Milford-Montague Toll Bridge Rehabilitation Design Contract <ul style="list-style-type: none"> Design C-430A (<i>RJL/DGF</i>) CM/CI CM-430A (<i>RJL/CLR</i>) Construction T-430A (<i>RJL/CLR</i>) 	9
442A <i>CTH/DGF</i>	Washington Crossing Toll Supported Bridge Phase 1 Rehabilitation & Concept Study	9
444A <i>RJL/DGF</i>	Upper Black Eddy-Milford Toll Supported Bridge Rehabilitation Contract <ul style="list-style-type: none"> Design C-444A 	10
447A <i>MEM/DGF</i>	Structural Analysis of the Calhoun Street Toll Supported Bridge <ul style="list-style-type: none"> Study C-447A 	10

Project Manager Legend

GGA – G. Alexandridis
 CAB – C. Baker
 WMC – W. Cane
 JMD – J. Dargan
 JBF – J. Fazio
 VMF – V. Fischer
 CTH – C. Harney
 RJL – R. Lamb

RWL – R. Little
 RSL – R. Luciani
 MEM – M. McCandless
 RLM – R. McClellan
 CLR – C. Rood
 CAS – C. Stracciolini
 RJZ – R. Zakharia

Program Area Manager Legend

GGA – G. Alexandridis
 DGF – D. Faust
 RWL – R. Little
 CLR – C. Rood
 LMS – L. Spalinski

Note: The first set of initials indicate the Project Manager and the second set of initial indicate the Program Area Manager

DELAWARE RIVER JOINT TOLL BRIDGE COMMISSION

Meeting of February 25, 2008

CONTRACT NUMBER	CONTRACT DESCRIPTION	PAGE NUMBER
449A <i>JBF/RWL/RJL/DGF</i>	Structural/Civil Task Order Agreement Consultant – PA Assignment <ul style="list-style-type: none"> Milford-Montague Toll Plaza Canopy Feasibility Study Design C-449A-6 	10
449B <i>JBF/RWL/RLM</i>	Structural/Civil Task Order Agreement Consultant – NJ Assignment <ul style="list-style-type: none"> New Hope-Lambertville Toll Supported Bridge Interim Inspection and Repair Design C-449B-4 (<i>JBF/RWL</i>) Community Involvement Guidelines C-449B-5 (<i>RLM/LMS</i>) 	11-12
450A <i>RJZ/RWL</i>	New Hope-Lambertville Toll Bridge Administration Building Back-up Power and Audio Visual Systems Improvements <ul style="list-style-type: none"> Concept Study C-450A-1 	12
451A <i>CLR</i>	Construction Management/Construction Inspection Task Order Agreement Consultant Engineering Project Manager <ul style="list-style-type: none"> Staff Augmentation C-451A-4 	12
457 <i>CTH/RWL</i>	New Hope-Lambertville Toll Supported Bridge Pier 2 Apron Priority Repairs – 2007 <ul style="list-style-type: none"> Design/Build DB-457A 	13
C-07-02 <i>JBF/RWL</i>	Year 2007 General Engineering Consultant – Annual Inspections <ul style="list-style-type: none"> 2007 Toll Bridge Inspections C-07-02A 2008 Toll Supported Bridge Inspections C-07-02B 	13-14

Project Manager Legend

GGA – G. Alexandridis
CAB – C. Baker
WMC – W. Cane
JMD – J. Dargan
JBF – J. Fazio
VMF – V. Fischer
CTH – C. Harney
RJL – R. Lamb

RWL – R. Little
RSL – R. Luciani
MEM – M. McCandless
RLM – R. McClellan
CLR – C. Rood
CAS – C. Stracciolini
RJZ – R. Zakharia

Program Area Manager Legend

GGA – G. Alexandridis
DGF – D. Faust
RWL – R. Little
CLR – C. Rood
LMS – L. Spalinski

Note: The first set of initials indicate the Project Manager and the second set of initial indicate the Program Area Manager

DELAWARE RIVER JOINT TOLL BRIDGE COMMISSION

Meeting of February 25, 2008

CONTRACT NUMBER	CONTRACT DESCRIPTION	PAGE NUMBER
C-07-03 CAS/RWL	Year 2007 Traffic Engineering Consultant Agreement	14

Project Manager Legend

GGA – G. Alexandridis
CAB – C. Baker
WMC – W. Cone
JMD – J. Dargan
JBF – J. Fazio
VMF – V. Fischer
CTH – C. Harney
RLL – R. Lamb

RWL – R. Little
RSL – R. Luciani
MEM – M. McCandless
RLM – R. McClellan
CLR – C. Rood
CAS – C. Stracciolini
RJZ – R. Zakharia

Program Area Manager Legend

GGA – G. Alexandridis
DGF – D. Faust
RWL – R. Little
CLR – C. Rood
LMS – L. Spalinski

Note: The first set of initials indicate the Project Manager and the second set of initial indicate the Program Area Manager

DELAWARE RIVER JOINT TOLL BRIDGE COMMISSION

Meeting of February 25, 2008 PROJECT STATUS REPORT

TRENTON-MORRISVILLE (ROUTE 1) TOLL BRIDGE REHABILITATION AND ADDITION OF ONE NB AUXILIARY LANE

DESIGN Contract No. C-380A

The Design Consultant, The Louis Berger Group, continues to provide services through the post-design/construction phase of the project.

CONSTRUCTION MANAGEMENT/CONSTRUCTION INSPECTION Contract No. CM-380B

The Construction Management/Construction Inspection Consultant, Hill International, has been coordinating field activities with the contractor, reviewing contractor schedules, conducting bi-weekly progress and scheduling meetings, preparing daily reports, tracking project submittals and developing public involvement and outreach efforts.

Hill's Public Involvement Consultant, Bergmaier Associates, continues to update the project website, answer customer generated questions via the toll free number and updating the quarterly newsletter.

As a result of the initial OSHA Compliance Inspection that took place in July 2007 one of the recommendations moving forward was for the Commission to perform follow-up safety inspections of the Contract T-380B, Rehabilitation of the Trenton-Morrisville Toll Bridge and One Auxiliary Lane, jobsite.

Hill has hired an experienced Safety Professional (Applegate Associates, Inc.) to perform periodic OSHA Compliance Inspections on the Trenton-Morrisville Toll Bridge Rehabilitation construction site. At the conclusion of each site visit, Applegate will be providing the Commission with a report of their findings. The inspections have taken place in October, November and December 2007 as well as January 2008. For the remainder of the project inspections will be scheduled bi-monthly.

DELAWARE RIVER JOINT TOLL BRIDGE COMMISSION

Meeting of February 25, 2008 PROJECT STATUS REPORT

CONSTRUCTION Contract No. T-380B

Construction work is progressing on schedule. Stage 1 is underway and expected to last until the spring of 2008. Stage 1 work includes the rebuilding of the toll plaza, construction of the head house that connects the main building to the new toll tunnel, as well as demolition and rebuilding the downstream portions of the main river bridge. Deck demolition has been completed on the downriver portion of the main river bridge. Pier cap extensions have been constructed and new structural steel has been set. The contractor has placed new deck and is curing the remaining spans in all the main river spans in the widened locations. The toll plaza demolition continues with the removal of portions of the existing canopy and toll booths. New toll islands, booths and canopy sections are currently being installed. New structural steel girders have been placed on the widened portion of the PennDOT viaduct over Conrail & Delaware Canal adjacent to Pennsylvania Avenue. Sound barrier wall has been constructed along Ramp G from Pennsylvania Ave to Route 1 NB. Numerous Commission owned overpass structures are also being reconstructed on both sides of the river.

A progress "Partnering Meeting" was held on January 28, 2008 at the Construction Manager's field office. Representatives from the Commission, Berger, Hill and Conti were in attendance. The session was run by a facilitator, FMI Corporation.

PRELIMINARY ENGINEERING AND ENVIRONMENTAL DOCUMENTATION FOR I-95/SCUDDER FALLS TOLL SUPPORTED BRIDGE

STUDY Contract No. C-393A

The Environmental Assessment (EA) and the Section 4(f) documents were submitted to the Commission, the New Jersey Department of Transportation (NJDOT), the Pennsylvania Department of Transportation (PennDOT), and the Federal Highway Administration (FHWA) for reviews on February 1, 2008. The reviews by these agencies will be concurrent to shorten the schedule. Subsequent to the comment resolutions received from these agencies, the EA will be distributed to the public and other interested agencies for review and comment in April. A public hearing/Open House is currently being scheduled for early May. The final decision document is expected by August 2008.

The preliminary Preferred Alternative is the inside widening of I-95 in Pennsylvania, Option 2 at Taylorsville Road and Option 1c – Modified (Roundabout) at Route 29. The Preferred Alternative also includes a total replacement of the Scudder Falls Bridge with the new bridge containing 5 northbound and 4 southbound lanes on an upstream alignment.

DELAWARE RIVER JOINT TOLL BRIDGE COMMISSION

**Meeting of February 25, 2008
PROJECT STATUS REPORT**

NORTHERLY CROSSINGS CORRIDOR CONGESTION MITIGATION STUDY

STUDY
Contract No. C-395A

A Memorandum of Understanding (MOU) has been developed in accordance with the workshops held with both PennDOT and NJDOT. This MOU will be provided to each of the two (2) DOTs for their review, acceptance and ultimately their execution.

ELECTRONIC SURVEILLANCE / DETECTION SYSTEM

PROGRAM MANAGER
Contract No. C-396A

The Program Manager, Jacobs Edwards & Kelcey (E&K), has been coordinating site survey activities with the DBM Team, reviewing DBM Team schedules, tracking and reviewing project submittals, conducting bi-weekly progress meetings and design review meetings, and coordinating communications with the traveling public.

E&K continues to assist the Commission, together with Counsel, in discussions with Advanced Wireless Services (AWS) license holders who have bought rights to regional wireless frequencies through an FCC auction and determined that their proposed AWS networks will potentially interfere with the Commission's microwave communications system. Negotiations are in progress for an agreement to compensate the Commission for vacating its licenses to operate in the affected frequencies.

DELAWARE RIVER JOINT TOLL BRIDGE COMMISSION

Meeting of February 25, 2008 PROJECT STATUS REPORT

DESIGN-BUILD-MAINTAIN PROJECT DB-396A

Mass. Electric Construction Company (MECC) has been actively addressing preliminary matters associated with the start-up of work associated with the Electronic Surveillance / Detection System Design-Build-Maintain Project.

MECC continues to conduct site surveys documenting existing electrical infrastructure and existing utilities at each bridge as well as identifying potential electrical and electronic surveillance equipment locations and proposed electrical and fiber optic conduit routing.

Bi-weekly Design Review Meetings are held to review the site surveys in preparation of documenting the results of the same and initiating the preparation of design drawings.

Additional work activities include the submission of weekly project schedules, coordinating MPT activities associated with site surveys, and preparation of project material submissions.

NEW HOPE – LAMBERTVILLE TOLL BRIDGE ADMINISTRATION BUILDING RENOVATIONS AND ADDITION

DESIGN Contract No. C-397B

Final construction bid documents were received from VITETTA on September 10, 2007. Conformed Contract Documents were received from VITETTA on January 20, 2008. Five (5) Bids were received on October 18, 2007. Interior Design Services is being finalized.

DELAWARE RIVER JOINT TOLL BRIDGE COMMISSION

Meeting of February 25, 2008 PROJECT STATUS REPORT

CONSTRUCTION ADMINISTRATION Contract No. CM-397B

A Request for Letters of Interest (RFLOI) for this project was posted on the Commission's website on November 13, 2007. A non-mandatory Pre-LOI meeting was held on November 20, 2007 with five (5) firms in attendance. Letters of Interest were received on November 30, 2007.

Notice of Award and Limited Notice to Proceed was issued on January 22, 2008. The Contract Award was ratified by the full Commission on January 28, 2008. STV Construction Inc.'s continues the Construction Administration Services processing Contractor's Submittals and monitoring construction field activities.

CONSTRUCTION Contract No. T-397B

Bid award was made to Twining Construction Co. Inc. at the Commission November 19th meeting for an amount of \$ 4,529,102.00. Notice of Award was issued on November 20, 2007.

Notice to Proceed effective date was December 21, 2007; and a Pre-Construction Meeting was held on January 07, 2008. Bucks County Pre-Construction Conference was conducted on January 10, 2008. Demolition work has started.

IAG RFP CONSULTANT

Contract No. C-412A-11

Commission and STV comments that were developed from the review of the Inter-Agency Group's (IAG) E-ZPass Request for Proposals to Furnish and Provide Electronic Toll Technology and Associated Services for the Operation of an E-ZPass System were compiled and provide to the IAG.

DELAWARE RIVER JOINT TOLL BRIDGE COMMISSION

**Meeting of February 25, 2008
PROJECT STATUS REPORT**

I-78 ROADWAY REHABILITATION CONTRACT

**DESIGN
Contract No. C-424A**

PB Americas, Incorporated (PB) continues to provide post design support for the project. PB is continuing to respond to Contractor requests-for-information (RFIs), reviewing and responding to shop drawings and other submissions from the contractor and attending the bi-weekly Progress Meetings as needed. PB also continues to have on site representation for the four (4) Drilling and Slurry Grouting Trial Areas with Trial Area # 1 completed and the remaining 3 trial areas underway.

**CONSTRUCTION MANAGEMENT/CONSTRUCTION INSPECTION
Contract No. CM-424A**

Greenman-Pedersen, Inc (GPI) continues to provide CM/CI services for this contract which includes monitoring and coordinating field activities with the contractor, reviewing contractor schedule updates, preparation and processing of contractor invoicing, conducting bi-weekly Progress and Scheduling Meetings and preparing minutes of such, preparing daily reports, tracking both RFIs and project submittals along with public information efforts. The CM/CI field offices have been completely established. The development of the first project newsletter continues as has the responding to customer generated questions obtained via the toll free project hotline phone number, the number which continues to be displayed on site via two variable message boards. Contact has been made to the local officials to advise them of the status of the ongoing construction.

**CONSTRUCTION
Contract No. T-424A**

Tilcon New York, Inc. has completed establishing the CM/CI field office. Milling and repaving of the shoulders in advance of shifting traffic onto the shoulders for Stage 1 work was completed with the videoing and inspecting and subsequent lining of the drainage laterals continuing. Work on the drainage channel stabilization along County Route 519 under I-78 has been completed. Catch basin cover change outs, along with drilling and slurry grouting also continues. Also continuing is the replacement of the median drainage. The implementation of a project wide speed reduction from 65 MPH to 50 MPH was put into effect in early February with speed enforcement implemented. The contractor's composite baseline construction schedule (CPM) was approved and continues to be updated bi-weekly.

DELAWARE RIVER JOINT TOLL BRIDGE COMMISSION

**Meeting of February 25, 2008
PROJECT STATUS REPORT**

NJDEP & PADEP MUNICIPAL STORM WATER COMPLIANCE PROGRAM CONSULTING SERVICES

Contract No. C-425A

DESIGN Assignment #9

The Borough of Portland has been ordered by the PA DEP to provide a sewage treatment plant to service residential and other facilities within the Borough. The Borough has requested an easement to construct a sewer force main to the treatment plant within Commission property. The Commission and Commission Counsel have been working with the Borough to prepare the requested easement documentation.

The Commission requested T & M Associates prepare a proposal to review the proposed sewer force main plans prepared by the Borough engineering consultant, Brinjac Engineering, and determine the best location for stub connection to which the Commission will ultimately connect our P-C Toll facility. As part of the connection, the Commission is required to install a grinder pump provided by the Borough, and construct a lateral connection from our building to the sewer tap location.

The final report was submitted and additional questions/comments have been addressed by T & M Associates and are being reviewed by the Commission. It is expected that this Task Order Assignment will be closed upon clarification the outstanding questions/comments.

DELAWARE RIVER JOINT TOLL BRIDGE COMMISSION

**Meeting of February 25, 2008
PROJECT STATUS REPORT**

I-78 OPEN ROAD TOLLING (ORT) LANES DESIGN

DESIGN
Contract No. C-427B

I-78 ORT Lanes Design (Infrastructure Project)

As a result of the 60% Plans, Specifications and Estimate (PS&E) submission, HNTB and the Commission met to discuss the significant increase in the engineer's estimate as compared to the concept study estimate. The estimated construction cost increase is primarily related to the proposed retaining walls along the I-78 eastbound lanes. Both the lengths and heights of the two (2) proposed retaining walls have increased from that developed during the concept level. As a result of this increase, the Commission has requested that HNTB provide an engineer estimate for alternatives that would reduce the cost of the retaining walls. The Commission is currently reviewing this information.

DelVal Soil & Environmental Consultants Inc. Testing completed the percolation testing and rock boring sample collections. HNTB will review the information and the storm drainage design concept will be revisited and analyzed to see if the stormwater requirements can be met. HNTB is proceeding with the roadway lighting design, final pavement repair and construction plans, and ORT and tunnel work. They have not proceeded with all design items as a result of the concern related to the current engineer's estimate.

Customer Service Center/Violation Processing Center Design-Build-Operate-Maintain Project

HNTB is revising the CSC/VPC RFP to address comments discussed during a concentrated page-turn effort to revise the fee structure of the RFP.

In-Lane Toll System Design-Build-Maintain Project

TransCore submitted a draft scope of work to maintain the existing ETC Software for three (3) years plus two (2) additional one (1) year options and to coordinate and cooperate with the selected ORT/VES system integrator to integrate a proposed ORT/VES system with the existing ETC system. The scope of work is currently under review. This proposal will ultimately be included in the In-Lane Toll System DBM RFP as an allowance to the vendor.

DELAWARE RIVER JOINT TOLL BRIDGE COMMISSION

Meeting of February 25, 2008 PROJECT STATUS REPORT

MILFORD-MONTAGUE TOLL BRIDGE REHABILITATION CONTRACT

DESIGN

Contract No. C-430A

The Design Engineer, Modjeski and Masters, Inc., (M&M) is performing Post Design Services. They have been responding to RFI's and reviewing shop drawing submittals through the use of the FTP site. The site permits rapid response to RFI's and rapid reviews and approvals of shop drawings.

CONSTRUCTION MANAGEMENT/CONSTRUCTION INSPECTION

Contract No. CM-430A

The CM/CI Consultant, STV Incorporated, has established the Project Field Office in Montague, New Jersey. During mobilization by the contractor, the office will be staffed full time by the Resident Engineer and/or the Assistant Resident Engineer during all construction hours. The consultant continues to log RFI's and Shop Drawing submittals and coordinate activities through resolution. Schedule Update Meetings and Progress Meetings are conducted in the Project Field Office biweekly.

CONSTRUCTION

Contract No. T-430A

The contractor, IEW Construction Group, is fully mobilized. Advance warning signs, including VMS, have been erected. Construction of the under-deck work platform has commenced. Community officials of Milford Borough, Milford Township and Montague Township were apprised of the project construction highlights and construction schedule during their regularly scheduled February municipal meetings.

WASHINGTON CROSSING TOLL SUPPORTED BRIDGE PHASE 1 REHABILITATION & CONCEPT STUDY

Contract C-442A

A Request for Letters of Interest (RFLOI) for this project was posted on the Commission's website on November 13, 2007. A pre-LOI meeting was held on November 20, 2007 with eighteen firms in attendance. LOI's are due on December 10, 2007. The TEC reviewed the LOI's and met with the SSC in mid-January to present their findings. The Professional Services Committee has provided the names of four short-listed firms. A Request for Proposal (RFP) was sent to the four firms on February 15, 2008.

DELAWARE RIVER JOINT TOLL BRIDGE COMMISSION

**Meeting of February 25, 2008
PROJECT STATUS REPORT**

UPPER BLACK EDDY-MILFORD TOLL SUPPORTED BRIDGE REHABILITATION CONTRACT

**DESIGN
Contract No. C-444A**

The Technical Evaluation Committee reviewed the Letters of Interest and arrived at a short list of firms to be invited to submit a proposal for the design contract. A Request for Proposal was sent to the short listed firms. Evaluation of proposals, negotiations and selection are anticipated for March and April.

STRUCTURAL ANALYSIS OF THE CALHOUN STREET TOLL SUPPORTED BRIDGE

**STUDY
Contract No. C-447A**

This project is for the in-depth inspection, structural analysis and comprehensive concept study for the Calhoun Street Bridge. It is anticipated that the concept study will be used to develop the scope of a future design and subsequent construction contract. The Consulting Engineering Agreement was executed October 24, 2007.

Lichtenstein Consulting Engineers have submitted the Condition Assessment and Load rating Report and is meeting with the Commission to discuss Alternative for rehabilitation. The consultant has commenced working on the development of the Concept Study Report.

STRUCTURAL / CIVIL TASK ORDER AGREEMENT CONSULTANT Contract No. C-449A

MILFORD-MONTAGUE TOLL PLAZA CANOPY FEASIBILITY STUDY

**DESIGN
Assignment #6**

Under this Task Order Assignment the Commission asked The Louis Berger Group, Incorporated to determine the feasibility of adding LED Full Color Lane Assignment Display signs to the designed toll plaza canopy structure. The consultant will provide the Commission with the basis to decide if we should proceed with implementing the addition.

Work on this Task Order is underway.

DELAWARE RIVER JOINT TOLL BRIDGE COMMISSION

**Meeting of February 25, 2008
PROJECT STATUS REPORT**

STRUCTURAL / CIVIL TASK ORDER AGREEMENT CONSULTANT
Contract No. C-449B

NEW HOPE LAMBERTVILLE TOLL BRIDGE INTERIM INSPECTION AND REPAIR DESIGN

Assignment #4

Subsequent to the GEC inspection of the New Hope - Lambertville Toll Bridge (NHLTB) in August, a letter report was submitted to the Commission outlining the inspection findings. The report noted that ten (10) cantilever floor beam brackets exhibited small cracks in the tie-plate/top flange connections. The report recommended an interim inspection within (3) months.

The purpose of this Task Order Agreement Assignment is to implement the recommendations made by the GEC to inspect and design interim repairs for the superstructure. This assignment will include an In-Depth Interim Inspection focusing on the cantilever floor beam brackets recommendations for a means of arresting the existing cracks, design and post design services for the crack repairs and recommendations for all necessary floor beam bracket retrofit repairs. The assignment will also include a second Interim Inspection following the repairs.

During the week of November 5, 2007 TranSystems | Lichtenstein (TS|L) performed an interim inspection of the bridge. A meeting was held with the Consultant on November 15, 2007 to discuss the inspection findings. Five (5) additional small cracks were discovered in the cantilever floor beam brackets during the interim inspection. As a precautionary measure, the right lanes in each direction of the bridge, which are partially supported by the cantilever brackets, were closed to traffic on November 16, 2007. Those lanes will remain closed until repairs have been implemented. No adverse traffic impacts are expected from the lane closures due to the light traffic volumes on the bridge.

TS|L submitted their final Interim Inspection report on February 5, 2008. The Interim Inspection report included recommendations on how the Commission should proceed with a retrofit plan and the associated construction work. The report concludes that it is necessary to perform controlled load testing and stress level analysis in order to assess the connections at the cantilever floorbeams. The testing and analysis is necessary to determine the number of floorbeams requiring retrofit and the type of structural retrofit details needed. Following the testing and analysis, design plans and specifications will be developed for a construction contract to be let for the permanent retrofits.

DELAWARE RIVER JOINT TOLL BRIDGE COMMISSION

**Meeting of February 25, 2008
PROJECT STATUS REPORT**

COMMUNITY INVOLVEMENT GUIDELINES

Assignment #5

Under this Task Order Assignment the Commission requested Greenman-Pedersen, Incorporated to develop a series of guidelines or best practices for community involvement based on contractor's public participation experiences with a series of past commission projects.

Questionnaires have been sent to Commission staff and outside contractors responsible for community outreach on a roster of selected projects. The responses from those instruments were used to structure two workshops to review a proposed draft of the guidelines.

The guidelines are now in the process of second draft preparation, with another meeting with commission staff for final review before being submitted to the Commission for approval.

NEW HOPE – LAMBERTVILLE TOLL BRIDGE ADMINISTRATION BUILDING BACK – UP POWER AND AUDIO VISUAL SYSTEMS IMPROVEMENTS

**CONCEPT STUDY
Contract No. C-450A-1**

Task Order Assignment was executed on January 04, 2008. Brinjac Engineering attended a Project Kick-Off meeting on January 07, 2008. Project Progress Meeting was held on January 31, 2008; and a Draft Concept Study Report is being reviewed.

CONSTRUCTION MANAGEMENT/CONSTRUCTION INSPECTION TASK ORDER AGREEMENT CONSULTANT

Contract No. C-451A

ENGINEERING PROJECT MANAGER

**Staff Augmentation
Assignment #4**

Under this Task Order Assignment the Consultant, Remington, Vernick & Arango Engineers, Incorporated (RVA), continues to provide a Project Manager for staff augmentation of the Commission's construction management staff.

DELAWARE RIVER JOINT TOLL BRIDGE COMMISSION

**Meeting of February 25, 2008
PROJECT STATUS REPORT**

NEW HOPE – LAMBERTVILLE TOLL SUPPORTED BRIDGE PIER 2 APRON PRIORITY REPAIRS - 2007 Contract DB-457A

In accordance with Resolution ENG-08-09-07, New Hope - Lambertville Toll Supported Bridge, Pier 2 Priority Repairs – 2007, Contract No. DB-457A was awarded to W.J. Castle P.E. & Associates, P.C.

The project includes Design-Build services to be provided by specialty engineer/contractor to perform high priority repairs of the New Hope – Lambertville Toll Supported Bridge. Services include engineering inspection, design, permitting, and construction for the repair of damage to the apron of Pier 2 to avoid possible significant additional deterioration from a future flood event.

Project kick-off meeting and follow-up progress meetings have been held. Underwater inspection work has been completed; design details prepared and repairs are near completion. Underwater work has been slowed due to unexpected high water. The remaining work is expected to be complete by the end of February.

GENERAL ENGINEERING CONSULTANT - ANNUAL INSPECTIONS C-07-02

2007 TOLL BRIDGE INSPECTIONS

Assignment #2A

This Task Order Assignment which has been awarded to TranSystems | Lichtenstein (formerly Lichtenstein Consulting Engineers) includes the 2007 Inspection of the Commission's Toll Bridges and related facilities. Inspections of all the Commission's Toll Bridge Facilities have been completed. Vehicle & Equipment Inspections for each District have also performed. This information will be incorporated into the Annual Inspection Report.

The Final DRAFT Annual Inspection Report was sent to the Commissioners in early February. The Final DRAFT Annual Inspection Report and the Final DRAFT Annual Maintenance Report have been reviewed by the Commission's engineering staff. Comments from the Commission's review have been given to the Consultant for incorporation into the Final version of the Reports. The Final Annual Inspection Report will be provided at the February Commission meeting for review and approval.

DELAWARE RIVER JOINT TOLL BRIDGE COMMISSION

Meeting of February 25, 2008 PROJECT STATUS REPORT

2008 TOLL SUPPORTED BRIDGE INSPECTIONS

Assignment #2B

A proposal for this Task Order Assignment was received from the current General Engineering Consultant (GEC), TranSystems | Lichtenstein. The proposal has been reviewed by the Commission's engineering staff and it is recommended for approval from the Commission. The scope of this assignment includes the 2008 Inspection of the Commission's Toll Supported Bridges and related facilities. Vehicle & Equipment Inspections for each District will also be performed as part of this assignment. This information will be incorporated into the 2008 Annual Inspection Report.

YEAR 2007 TRAFFIC ENGINEERING CONSULTANT AGREEMENT

STUDY

Contract No. C-07-03

The 2007 Traffic Engineering Report Year 2008 Toll Bridge Traffic Volume and Revenue Projections was accepted at the January 28, 2008 Commission Meeting. Pennoni Associated submitted all hardcopies and electronic files for this report.

DELAWARE RIVER JOINT TOLL BRIDGE COMMISSION

Meeting of February 25, 2008

**Operations Report Index
For
Supplemental Projects Report**

SUBJECT	DESCRIPTION	PAGE NUMBER
Projects	Supplemental Projects Report Overview Report of General Upkeep, Preventative Maintenance and Maintenance Projects District I, II and III Month of January 2008	1 - 5

DELAWARE RIVER JOINT TOLL BRIDGE COMMISSION

Meeting of February 25, 2008

SUPPLEMENTAL PROJECTS REPORT

**OVERVIEW REPORT OF GENERAL UPKEEP, PREVENTATIVE MAINTENANCE
AND MAINTENANCE PROJECTS**

DISTRICT I, II AND III

MONTH OF JANUARY 2008

Report as shown directly hereunder and have been submitted by Frank J. Tolotta, Deputy Executive Director of Operations, to keep the Commission Members apprised of the above captioned items at all three districts.

District I

John B. Prior, Acting Superintendent

David Burd, Acting Asst. Superintendent

James B. Ley, Foreman of Maintenance, Trenton-Morrisville

Daniel Pascuillo, Foreman of Maintenance, New Hope-Lambertville

Administration

Task	JAN	FEB	MAR	APR	MAY	JUN	JUL	AUG	SEP	OCT	NOV	DEC	Total Man-hours
Bridge Maintenance													0
Bldg./Facilities Maintenance	625												625
Grounds Maintenance	20												20
Road Maintenance	25												25
Snow/Ice Maintenance	32												32
Vehicle Maintenance	135												135
Miscellaneous	180												180
Total Man-hours	1,017												1,017

Trenton-Morrisville Toll Bridge

Task	JAN	FEB	MAR	APR	MAY	JUN	JUL	AUG	SEP	OCT	NOV	DEC	Total Man-hours
Bridge Maintenance													0
Bldg./Facilities Maintenance	180												180
Grounds Maintenance	80												80
Road Maintenance	60												60
Snow/Ice Maintenance	25												25
Vehicle Maintenance	150												150
Miscellaneous	145												145
Total Man-hours	640												640

New Hope-Lambertville Toll Bridge

Task	JAN	FEB	MAR	APR	MAY	JUN	JUL	AUG	SEP	OCT	NOV	DEC	Total Man-hours
Bridge Maintenance	0												0
Bldg./Facilities Maintenance	608												608
Grounds Maintenance	168												168
Road Maintenance	8												8
Snow/Ice Maintenance	0												0
Vehicle Maintenance	216												216
Miscellaneous	416												416
Total Man-hours	1,416												1,416

Southern Division Toll Supported Bridges

Task	JAN	FEB	MAR	APR	MAY	JUN	JUL	AUG	SEP	OCT	NOV	DEC	Total Man-hours
Bridge Maintenance	32												32
Bldg./Facilities Maintenance	354												354
Grounds Maintenance	168												168
Road Maintenance	70												70
Snow/Ice Maintenance	18												18
Vehicle Maintenance	0												0
Miscellaneous	33												33
Total Man-hours	675												675

District II
 Lendell Jones, Superintendent
 James Shelly Asst. Superintendent
 Robert Varju, Foreman of Maintenance, I-78
 Mark W. Dilts, Foreman of Maintenance, Easton-Phillipsburg

Easton-Phillipsburg Toll Bridge

Task	JAN	FEB	MAR	APR	MAY	JUN	JUL	AUG	SEP	OCT	NOV	DEC	Total Man-hours
Bridge Maintenance	42												42
Bldg./Facilities Maintenance	327												327
Grounds Maintenance	74												74
Road Maintenance	320												320
Snow/Ice Maintenance	14												14
Vehicle Maintenance	316												316
Miscellaneous	16												16
Total Man-hours	1,109												1,109

I-78 Toll Bridge

Task	JAN	FEB	MAR	APR	MAY	JUN	JUL	AUG	SEP	OCT	NOV	DEC	Total Man-hours
Bridge Maintenance	0												0
Bldg./Facilities Maintenance	1,461												1,461
Grounds Maintenance	677												677
Road Maintenance	104												104
Snow/Ice Maintenance	34												34
Vehicle Maintenance	154												154
Miscellaneous	0												0
Total Man-hours	2,430												2,430

Northern Division Toll Supported Bridges

Task	JAN	FEB	MAR	APR	MAY	JUN	JUL	AUG	SEP	OCT	NOV	DEC	Total Man-hours
Bridge Maintenance	30												30
Bldg./Facilities Maintenance	834												834
Grounds Maintenance	147												147
Road Maintenance	286												286
Snow/Ice Maintenance	18												18
Vehicle Maintenance	48												48
Miscellaneous	32												32
Total Man-hours	1,395												1,395

District III
 Bryan L. Hill, Superintendent
 Jeanne M. Pomager, Assistant Superintendent
 Thomas Chirico, Foreman of Maintenance

Portland-Columbia Toll Bridge

Task	JAN	FEB	MAR	APR	MAY	JUN	JUL	AUG	SEP	OCT	NOV	DEC	Total Man-hours
Bridge Maintenance	28												28
Bldg./Facilities Maintenance	244												244
Grounds Maintenance	98												98
Road Maintenance	18												18
Snow/Ice Maintenance	83												83
Vehicle Maintenance	148												148
Miscellaneous	15												15
Total Man-hours	634												634

Portland-Columbia Toll Supported Bridge

Task	JAN	FEB	MAR	APR	MAY	JUN	JUL	AUG	SEP	OCT	NOV	DEC	Total Man-hours
Bridge Maintenance	0												0
Bldg./Facilities Maintenance	0												0
Grounds Maintenance	42												42
Road Maintenance	0												0
Snow/Ice Maintenance	12												12
Vehicle Maintenance	0												0
Miscellaneous	0												0
Total Man-hours	54												54

Delaware Water Gap Toll Bridge

Task	JAN	FEB	MAR	APR	MAY	JUN	JUL	AUG	SEP	OCT	NOV	DEC	Total Man-hours
Bridge Maintenance	0												0
Bldg./Facilities Maintenance	654												654
Grounds Maintenance	130												130
Road Maintenance	206												206
Snow/Ice Maintenance	50												50
Vehicle Maintenance	320												320
Miscellaneous	100												100
Total Man-hours	1,460												1,460

Milford-Montague Toll Bridge

Task	JAN	FEB	MAR	APR	MAY	JUN	JUL	AUG	SEP	OCT	NOV	DEC	Total Man-hours
Bridge Maintenance	0												0
Bldg./Facilities Maintenance	310												310
Grounds Maintenance	74												74
Road Maintenance	36												36
Snow/Ice Maintenance	72												72
Vehicle Maintenance	195												195
Miscellaneous	159												159
Total Man-hours	846												846

DELAWARE RIVER JOINT TOLL BRIDGE COMMISSION

MONTHLY ACTIVITY SERVICES RENDERED REPORT

DISTRICT SOUTHERN DIVISION

YEAR 2008

ACTIVITY/SERVICE	CS	WC	NH-L	LT	CB-S	L-R	TOTAL
Disabled Vehicle Removal	3	0	0	2	0	0	5
Shift/Hours On Duty	776	756.5	1280	680	88	0	3580.5
Patrols/Crossovers	383	375	602	345	34	0	1739
Complaints Received	14	5	0	15	0	0	34
Co-Operation W/Other Agencies	0	26	2	0	4	0	32
Services Rendered	114	183	326	60	4	0	687
First Aid	1	0	1	0	0	0	2
Advisories: Pedestrians, Bikers & Automobiles	116	72	211	44	0	0	443
Traffic Control Assistance	53	35	16	29	5	0	138
River Readings	125	123	93	6	18	0	365
Vehicles Refused Passage	108	13	52	57	2	0	232
Medical Emergencies (911 Calls)	0	0	0	0	0	0	0
Calls For Assistance (State Police)	3	1	0	1	2	0	7
TOTAL	1696	1589.5	2583	1239	157	0	7264.5

NOTES:

CS	CALHOUN STREET
WC	WASHINGTON CROSSING
NH-L	NEW HOPE-LAMBERTVILLE
LT	LOWER TRENTON
CB-S	CENTER BRIDGE-STOCKTON
L-R	LUMBERVILLE-RAVEN ROCK (PED)

DELAWARE RIVER JOINT TOLL BRIDGE COMMISSION

Meeting of February 25, 2008

Operations Report Index

Plants and Facilities

SUBJECT	DESCRIPTION	PAGE NUMBER
Plants and Facilities	Status report Month of January 2008	1-2

DELAWARE RIVER JOINT TOLL BRIDGE COMMISSION

Meeting of February 25, 2008

PLANTS AND FACILITIES REPORT MONTH OF JANUARY 2008

- Attended a Pre-Construction Meeting with Bryan Hill, District 3 Superintendent, on January 4, 2008 at the Portland, Pa. Borough Hall to discuss the Portland Borough Sewer Force Main Project.
- Assisted/coordinated efforts with District I Personnel involving the relocation of the New Hope-Lambertville administrative personnel and the vacating of various storage rooms in preparation for the New Hope-Lambertville Toll Bridge Administration Building Renovations & Addition Project.
- Attended a Pre-Construction Meeting on January 7, 2008 at the New Hope-Lambertville Administration Building to discuss the NH/L Toll Bridge Administration Building Renovations & Addition Project.
- As Chairperson, conducted the Green Team Bi-Monthly Meeting on January 8, 2008 at the Easton-Phillipsburg Administration Building. Topics included the facility recycling infopath form and long-term initiatives. Also, a tour of the Phillipsburg Early Childhood Learning Center was provided after the regular meeting. The facility earned a LEED 2.0 Silver Certification.
- Participated in a meeting on January 11, 2008 at the New Hope-Lambertville Administration Building to discuss the Trenton-Morrisville Elevator Modernization/Upgrade Project.
- Attended the Phillipsburg Rotary Club Meeting on January 16, 2008 at Flynn's Catering Facility, Phillipsburg, N.J. A power presentation of the Commission's Compact Authorized Investment Program was given by Julio Guridy, Director of the Compact Authorized Investment Program.
- Participated in the Partnering Meeting for the Milford-Montague Toll Bridge Rehabilitation Project on January 17, 2008 at Occasions located in New Hope, Pa.
- Attended a meeting on January 22, 2008 at the Trenton-Morrisville Administration Building to discuss the final draft of the General Engineering Consultant Annual Inspection Report.
- Attended the Superintendent's/Operations Meeting on January 24, 2008 at the Easton-Phillipsburg Administration Building to discuss various operational issues.

DELAWARE RIVER JOINT TOLL BRIDGE COMMISSION

Meeting of February 25, 2008

- Continued site visits of Commission Facilities to review plant operations, maintenance operating procedures and related issue.
- Attended a meeting on January 28, 2008 at the New Hope-Lambertville Administration Building to discuss strategy regarding the Delaware Water Gap Toll Bridge Facility Maintenance Addition/Expansion/Space Utilization Project.
- Attended a meeting on January 30, 2008 at the New Jersey State Police Regional Operations Intelligence Center located in West Trenton, N.J. to discuss the Commission-wide radio communications system.

DELAWARE RIVER JOINT TOLL BRIDGE COMMISSION

Meeting of February 25, 2008

COMPACT AUTHORIZED INVESTMENT

DAVID DEGEROLAMO (Chairman), (New Jersey)

GAETAN ALFANO, (Pennsylvania)

DONALD HART, (New Jersey)

J. ALAN FOWLER, (Pennsylvania)

The following pages reflect a report on those items assigned to the Compact Authorized Investment Committee.

Each item is reported separately and page numbered accordingly hereunder.

DELAWARE RIVER JOINT TOLL BRIDGE COMMISSION

Meeting of February 25, 2008

**OPERATION REPORT INDEX
FOR
COMPACT AUTHORIZED INVESTMENT**

SUBJECT	DESCRIPTION	PAGES NUMBER
Compact Authorized Investment	Status Report Month of February 2008	1-6

DELAWARE RIVER JOINT TOLL BRIDGE COMMISSION

Meeting of February 25, 2008

COMPACT AUTHORIZED INVESTMENT

General

During the month of January, 2008 the CAI director presented three CAI applications to the Commissioners for their consideration. One was a new application for Kline's Court road reconstruction project in Lambertville, and the other two were supplements for existing grants in Pennsylvania. The supplements for New Hope, PA and Bristol Borough, PA were both granted for increases to their original awards on their CAI projects. With these new additional awards, the DRJTBC Commissioners have granted over \$36,000,000 for CAI transportation related projects to 31 municipalities in Pennsylvania and New Jersey. In January two new applications were received by the CAI Department; one of the applications was from Knowlton Township, NJ and the second from Lambertville, NJ. Both of these applications will be discussed in the respective municipality summary. In addition, two grant supplement requests were also received; one from Solebury Township in PA and the other from Stockton Borough in NJ. Details of these requests will also be covered in the municipalities' summaries below.

Update of some of the most significant efforts with the grantees during this month

Pennsylvania

1. Milford Borough, PA – This project construction was completed in December, 2007, and just needs minor punch-list items that will be completed this spring as soon as the weather gets warmer. Also, final Penn DOT inspection will have to be completed before a formal closed out of the project.
2. Smithfield, PA – In January, this Township received the required Highway Occupancy Permit for the road work that needs to be completed on River Road under the Route I-80 over pass. The municipality also resolved its concerns with the probable drainage problems in the work area. The project is almost ready to advertise for bids. A status meeting will be scheduled in the near future with the key stake holders of the project.
3. Delaware Water Gap, PA –The CAI department attended a project progress status meeting on January 15, 2008. The only item pending for this project to advertise for bids is an approval of a Highway Occupancy Permit. The project is to advertise in February and anticipates a project construction award in early March, 2008.
4. Portland Borough, PA – On January 16th, the CAI director and the due diligence engineer held a meeting with Mayor Kay Bucci, the Borough's engineer to discuss both CAI projects and the pending invoice submitted by Portland. The budget of the Park and Walk had changed from its last revision, but the budget total was still under the total amount granted for the project. This project is reaching its final phase prior to advertisement. However, the original site for the Park and Ride project was no longer available and the owner, Mr. Frank Russo was not forthcoming with needed details of their schedules. Hence, Mayor Bucci was exploring a new site that has similar dimension as the original one for this project. An offer will be made to the property owner to see if it would be feasible to start the process of building the Park and Ride project this year. The Mayor feels that the Park and Ride project can still be built this year. The CAI department will continue to closely monitor this project as it progresses.

DELAWARE RIVER JOINT TOLL BRIDGE COMMISSION

Meeting of February 25, 2008

Pennsylvania Continued

5. Lower Mount Bethel, PA – Richard Schilling resigned his post as a part-time township manager, but the rest of the project team continues to move forward with the project and it opened its bids in January. The projects were bided with several alternatives. The ornamental lights and solar power panel did not make it under the current budget, so the Township is looking for alternative funds to be able to include those items. The bids are to be awarded on February 4th.
6. Williams Township, PA – The Township received all its necessary permits and the project has been awarded to TELCO and they have already started working on it. The CAI department received the bids for this project, which came in at approximately \$55,822 under the budgeted construction phase. The project is to be completed by June 2008. The CAI department is waiting for a copy of the executed construction contract between the Township and Telco construction and for the construction schedule.

Easton, PA – Becky Bradley has assumed the duties of the position formerly held by Barb Kowitz and Dave Hopkins, the City Director of Public Works indicated that he will be assisting her in completing the DRJTBC grant requirements in as timely a manner as possible. Becky and Dave met with Pat Boyle to develop a plan that will be acceptable for the Bridge commission and one that is capable of being completed by this fall if not sooner. The City indicated that it is waiting for materials costs from their vendor for pedestrian signals and expect them by next by the end of January. The CAI department is expecting the City to submit a fairly complete scope of work that will include detailed pricing for crosswalks, lighting, and the pedestrian improvements hopefully within in February.

City of Easton Status Report as of 1-15-08

The City of Easton has been granted a total of \$3,120,000 to complete three (3) separate projects. These projects are summarized below:

- A. Riverwalk Intermodal Center (Grant Amount: \$2,700,000, Reimbursement to date: \$600,000). The actual low bid for the project exceeded the budget, and at a meeting with the project stakeholders on November 28th, the group decided that a Value Engineering Analysis would be performed to see if there are any design modifications and/or reduction in the anticipated size of the building that would be feasible to reduce the cost to be within the available budget. The latest conversations with the Mayor and representatives of the Parking Authority indicate that the project will go on at a smaller scale, but no details have been presented yet. We anticipate receipt of further details regarding the revised design and proposed budget within the next 2 weeks (on or about January 30, 2008). In any case, this project will not be completed prior to the current December 31, 2008 grant agreement deadline.
- B. Trolley (Grant Amount: \$80,000, Reimbursement to date: \$53,816.66). The grant funding to date has been used to refurbish two (2) trolleys, develop and install signage, and operate the trolleys for the 2007 season. The feedback received from the City has been that the trolley program is successful and has received positive recognition. As previously noted to the City, it is uncertain if the remaining funds in the grant amount will enable the operation of the complete 2008 season and there is no funding plan in place to maintain and operate the trolley beyond the grant funding.

DELAWARE RIVER JOINT TOLL BRIDGE COMMISSION

Meeting of February 25, 2008

Pennsylvania Continued

- C. Larry Holmes Drive/Northampton Street Pedestrian & Bicycle Trail Improvements (Grant Amount: \$340,000, Reimbursement to date: \$0). This project was envisioned to provide upgraded pedestrian signals and crosswalks at the signalized intersections along Larry Holmes Drive and provide an improved trail system that will link the existing Riverfront Park trail system to the Bushkill Creek Corridor system. The project was originally awarded as two (2) separate grant projects, but the City has requested that they be combined into one (1) project. The CAI Department is currently awaiting a detailed scope of work and concept plan for the revised project, and for a request for an extension for the RiverWalk project, but to date have not received this information.
7. Riegelsville Borough, PA – The Borough continues to work out some details with DCNR on the bridge design. DCNR is requiring the bridge to have a specific façade and the Borough is working with the prefab bridge manufacturer to determine if the façade can be provided and what the cost will be. Once that is ironed out, the Borough will be submitting the plans and right-of way application to DCNR for their review. All of the other details have been finalized for the project. In the meantime, the Borough has submitted their Joint Permit application to PA DEP for their review. They met with Verizon and Met Ed on site to review relocating an existing utility pole and wires. The engineer has also has prepared preliminary easement drawings and have submitted them to the Borough for their review. A new Reimbursement Request was submitted by the Borough and a letter to formally request to reallocate \$11,000.00 in the budget to the Design and Permitting Category from the Contingency Category.
 8. Solebury Township, PA – The Township is still working on the project and bridge design. However, the Township submitted a letter requesting an additional \$3.14 million to the grant awarded to them of \$1,755,150. The project team attributes the need for additional money to increasing material cost, mandate from the state for storm water management and drainage improvements and landscaping improvement. The project completion date is still very close to the contract agreement due date of December 31, 2008 and the CAI department continues to monitor this project. The Township is also working on a resolution for the right of way transfer/easement of the DRJTBC property where the pedestrian bridge will be placed over the canal. The CAI due diligence engineer and Atty. Kim Freimuth from Fox Rothschild have been assisting in the coordination of this process.
 9. New Hope Borough, PA – At its January meeting, the Commissioners granted the Borough its additional request of \$176,404 to cover overage of the construction estimates. The upgrade of the traffic signals project is now \$426,404 and it continues on course to be completed by this summer.
 11. Falls Township, PA – No significant changes this month. The CAI department is still waiting for reimbursement request from them to close out the project.
 12. Upper Makefield Township, PA – This project is ready to commence and there will be a preconstruction meeting with Penn DOT on 02/07/08 to discuss the construction details. The commencement of construction is still on scheduled for March, 2008 with duration thru October, 2008.

DELAWARE RIVER JOINT TOLL BRIDGE COMMISSION

Meeting of February 25, 2008

Pennsylvania Continued

13. Lower Makefield, PA –The Traffic signal project is completed and the Township is still getting all the necessary paper work together for a close out. The final deliverables have been sent by the Township and are being processed. The Township has alluded that it wants to send another project application, but the CAI department is still to receive it.
14. Bristol Borough, PA – During its January meeting the Commission awarded Bristol Borough an additional \$334,950 in grant funding to upgrade 11 traffic signals starting at every intersection from Pond Street and Jefferson Avenue to Mill Street and including the intersections of Beth and Buckley streets, Mulberry and Radcliff streets, and Farragut Street and Green Lane. The additional funding brings the total amount of grant funding for this project to \$1,334,450.
15. Yardley, PA – The Borough provided a summary of the bids received for the project. The lowest responsible bidder was Harris Blacktopping at \$504,423.76. The Commission grant will cover \$234,217 of this cost. The project is on schedule and should be completed on time. The CAI department is awaiting the correct insurance certificate from the Borough. No other significant changes occurred during the month of January.
16. Morrisville, PA – West Bridge St. plans are fine and Penn DOT HOP was approved for West Bridge Street Curb & Sidewalk Replacement Pennsylvania Avenue to Cox St. The municipality is in process of advertising this project. The municipality continues to move ahead with this project and the other 3 projects it that was granted. This project is ready to be awarded and to start its construction.

New Jersey

1. Montague, NJ – The CAI department received its contract agreement back from the municipality with all the necessary signatures and it is fully executed. This project is ready to move forward. A meeting with the Township will be scheduled in the near future to discuss its project status.
2. Knowlton, NJ – The CAI Department received an additional application from the Township for a Traffic Management Improvement – Part II project. This improvement is at the intersections of Route 605 and 94 and it will develop a clearly marked truck turnaround on Route 94. Although this project was submitted by the Township of Knowlton, it is being proposed in coordination with the County of Warren. The initial engineering for this project has already been completed by the County engineering Department. This project is to be completed in approximately 4 months and it would meet the requirements of the CAI characteristics. The other Knowlton projects are also moving forward.
3. Belvidere, NJ – Following a meeting with the CAI director, the NJ due diligence engineer and with the Borough's and County's representatives on January 4th to discuss the submission of the revised application and any changes made from the prior revision, a revised grant application was submitted by the Borough and presented to the Commissioners at their January meeting. The

DELAWARE RIVER JOINT TOLL BRIDGE COMMISSION

Meeting of February 25, 2008

New Jersey (continued)

Commissioners took no action on this application and continue to evaluate it as it was submitted. Part of the reason for the revision of this application and its cost estimate increase were the repaving of the parking lot that was not part of the original application, replacing the entire sidewalk as opposed to a portion of it, and the underground conduit for future utility relocation.

4. Phillipsburg, NJ – All permits for this project have been obtained by Phillipsburg and the Town has awarded the project to Top Line Construction Corp. for \$2,809,665.90. However, the CAI department was not made aware that the project was going to be awarded, nor did the CAI department was given the opportunity to review the bids prior to the award as required by the contract Agreement and to make sure that the reconstruction of Union square could be include in the bids as an alternate. The CAI department is in the process of obtaining the necessary documentation and deliverables from the Town of Phillipsburg to satisfy the agreement requirements. The Town had a preconstruction meeting where the CAI NJ due diligence engineer was present. A meeting is being scheduled to discuss the construction process and the desire of the Commission of resurfacing the jurisdictional portion of Union Square with the contractor hired by the Town.
5. Pohatcong, NJ – The Township has submitted its bid documents for its project to the CAI department for review. The construction will directly impact Commission facilities on the NJ side of the Riegelsville Bridge, so this is the last chance to review them. These documents are being reviewed by the Commissioner's engineering department and would require a "no objection" to bid letter, if everything is okay. The Township is still planning to award the project for construction during the spring of 2008. The township desires to advertise in mid February and open bids on March 12th.
6. Milford, NJ – Since the December 27th meeting there have no other significant action on this project. The engineering plans are 98% complete. The construction project will be advertised for bids in February and bids to be opened by mid February. The Utility relocation should start in mid February.
7. Frenchtown, NJ – There was a reimbursement request submitted for the engineering work done on this project. Bimonthly meetings will be held with the Borough to monitor the projects progress status. A status update report meeting is being scheduled for February.
8. Lambertville, NJ – During their January meeting, the Commissioners awarded a new \$70,000 grant to the City of Lambertville for its Kline's Court project application. A new application has been submitted for the reconstruction of Jefferson Street. All other projects in the City are on target with all its projects.
9. Stockton, NJ – During the project status review meeting that was held with the municipality in January, it was revealed that the project had exceeded its total amount by \$257,000 due to the requirement made by SHPO to use blue stone material and to acquire it from its only approved quarry. A short fall supplement request was given to the CAI director for commissioner's consideration.

DELAWARE RIVER JOINT TOLL BRIDGE COMMISSION

Meeting of February 25, 2008

New Jersey (Continued)

10. Ewing, NJ – The CAI department is working in the execution of the CAI agreement which indicated the Commissioners new grant award to Ewing Township for \$1.8 million for its 2008 Roadway Resurfacing project, which includes improvements to an estimated 55 roadways throughout the township. Improvements include new asphalt, surface course, traffic striping and the installation of handicap ramps. This grant replaces an earlier grant in the same amount to the township. The Commission rescinded that grant award at the request of the township.
11. Trenton, NJ – Following the executive meeting with representatives of the City of Trenton, of NJDOT, and DRJTBC that was held on December 19th at NHL regarding the projects status and constraints and several possible solutions that were suggested by the three entities; follow up letters were received from the City of Trenton to request that the DRJTBC consider an extension of completion date of the project and that the Commission included the project construction to the current Conti Route 1 reconstruction contract with Conti. An internal meeting has been scheduled for February 4th to discuss these requests.
12. Delaware Twp., NJ – The current funded project is still pending close outs as there are still some punchlist items that need to be completed. No further significant progress was made during this period
13. Hopewell, NJ – Agreement has been sent to Hopewell for completion and the Township is working on having it fully executed. A meeting will be scheduled in the near future to review the project status. Hopewell is also contemplating submitting a new application for a moveable bridge over the DC& R Canal. The CAI department has not received that application to date.
14. West Amwell, N.J. – The Commission awarded West Amwell Township a second grant for \$365,000 for the reconstruction of a section of Rocktown Lambertville Road. Storm drainage will be installed as part of the reconstruction and the storm drainage ditch will be improved. The first project is still under status review for its completion. The CAI department is working on processing the CAI Agreement with the municipality.
15. Holland, NJ – The CAI department is completing the execution of the CAI agreement for the Township CAI project.

The CAI Director attended other CAI related meetings within the targeted communities. Two of these meetings included an economic forecast sponsored by the Greater Lehigh Valley Chamber of Commerce, with Director Glenn Reibman and the other to do a power Point presentation about the CAI program to the Phillipsburg Chamber of Commerce that was coordinated by Director Frank Beruta.

DELAWARE RIVER JOINT TOLL BRIDGE COMMISSION

Meeting of February 25, 2008

PROFESSIONAL SERVICES COMMITTEE REPORT

GAETAN ALFANO (Chairman), (Pennsylvania)

MELISSA HELLER, (Pennsylvania)

THOMAS SUMNERS, (New Jersey)

HARRY ZIKAS, (New Jersey)

There are not matters for the Professional Services Committee for review at this time.

DELAWARE RIVER JOINT TOLL BRIDGE COMMISSION

Meeting of February 25, 2008

NEW BUSINESS

SUBJECT	DESCRIPTION	PAGE NUMBER
New Business	Letter of Commendation	1 - 2

DELAWARE RIVER JOINT TOLL BRIDGE COMMISSION

Meeting of February 25, 2008

NEW BUSINESS

**NEW HOPE
LETTER OF THANKS FOR CAI GRANT**

New Hope-letter of thanks for CAI Grant is reproduced directly hereunder and are self-explanatory.



NEW HOPE BOROUGH

41 NORTH MAIN STREET
NEW HOPE, BUCKS COUNTY, PA 18938

215-862-3347
FAX: 215-862-8022

LAURENCE D. KELLER
MAYOR

SHARYN KEISER
PRESIDENT

CLAIRE SHAW
VICE PRESIDENT

JOHN BURKE
BOROUGH MANAGER

February 1, 2008

David R. DeGerolamo, Chairman and
Gaetan J. Alfano, Vice Chairman
Delaware River Joint Toll Bridge Commission
110 Wood Street
Morrisville, PA 19037

Dear Chairman DeGerolamo and Vice Chairman Alfano:

New Hope Borough wishes to thank you, the Commission, and its staff for your generous support of the Borough's efforts to upgrade its aging traffic signal installations.

The Compact Authorized Investment Grant will be utilized to replace the existing traffic signals at Bridge and Main and Bridge and Sugan. The modern signal replacements will be accessible and incorporate the latest software designed to accommodate the ever-increasing number of vehicles utilizing the Bridge Street Corridor leading to the free bridge between New Hope and Lambertville.

I wish to personally thank the Commission for its commitment to the communities that it so capably serves in Pennsylvania and New Jersey. The Commission's Compact Authorized Investment Grant Program has provided these communities with an unexpected, yet substantial source of funds to replace and upgrade our public works infrastructures.

Sincerely,

Laurence D. Keller
Mayor
New Hope Borough

Cc: Borough Council
File