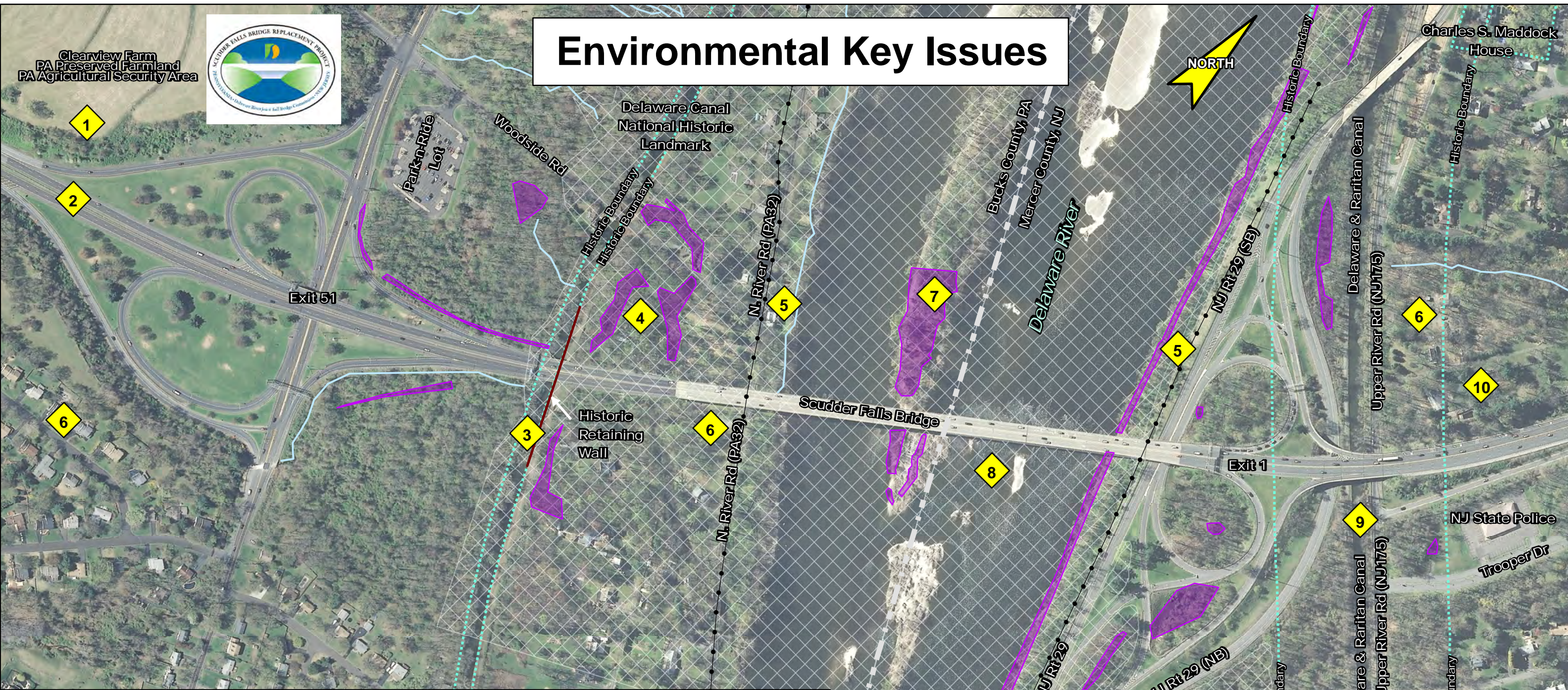


Clearview Farm  
PA Preserved Farmland  
PA Agricultural Security Area



# Environmental Key Issues

NORTH



## Environmental Key Issues

1. Coordinate with Lower Makefield Farm Preservation Corporation to minimize impacts to Clearview Farm.
2. Incorporate rain gardens and other low impact development strategies in the Stormwater Management Design.
3. A. Develop a construction protection plan to minimize recreational closures, protect the historic retaining wall, and avoid impacts to the Delaware Canal prism.  
B. Coordinate aesthetic treatments (pier, noise walls, landscaping, etc.) with jurisdictional agencies.  
C. Adhere to Feb 15 to July 31 in-canal work moratorium for the Delaware Canal.
4. Wetland mitigation site. Minimize impacts to optimize available land.
5. Minimize tree removal in the riparian zone.
6. Complete final design noise wall analysis.
7. Minimize vegetation clearing and ground disturbance on Park Island to avoid impacts to Ptelea trifoliata and potential red belly turtle nesting habitat.
8. A. Adhere to all in-water timing restrictions.  
B. Implement environmental construction monitoring plans and Spill Prevention Control and Countermeasure Plans.  
C. Coordinate navigation restrictions with PAFBC  
D. Use turbidity barriers.  
E. Do not commence construction or demolishing during peregrine falcon nesting period.  
F. Minimize fill in the floodplain/floodway.
9. A. Adhere to March 15 to June 15 restriction for work within the Delaware & Raritan Canal.  
B. Develop a construction protection plan to minimize recreational closures and avoid impacts to the canal prism.  
C. Coordinate aesthetic treatments (pier noise walls, landscaping, etc.) with jurisdictional agencies.
10. Perform tree clearing outside of Indiana bat restriction period between April 1 and September 30.

## Legend

- Wetland
- Stream
- Riparian Zone
- Cultural Resource
- 100-yr Floodplain

DELAWARE RIVER JOINT TOLL  
BRIDGE COMMISSION

Michael Baker  
INTERNATIONAL