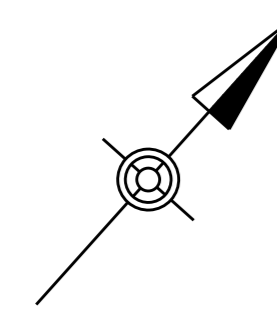
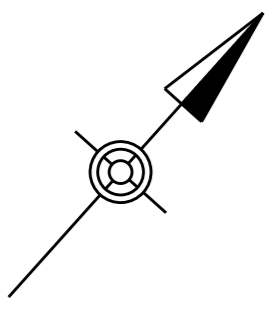
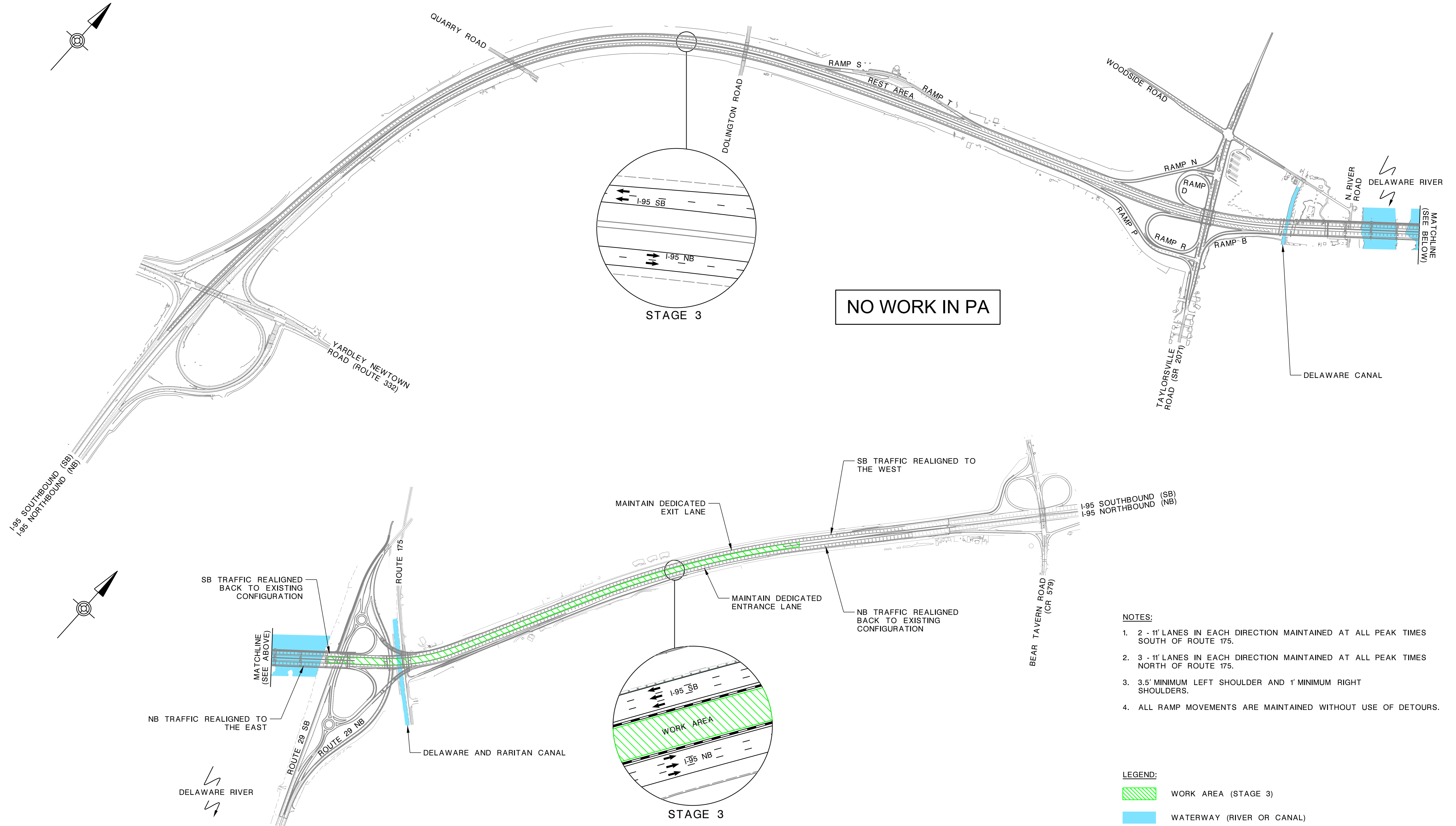


Traffic Control - Stage 3

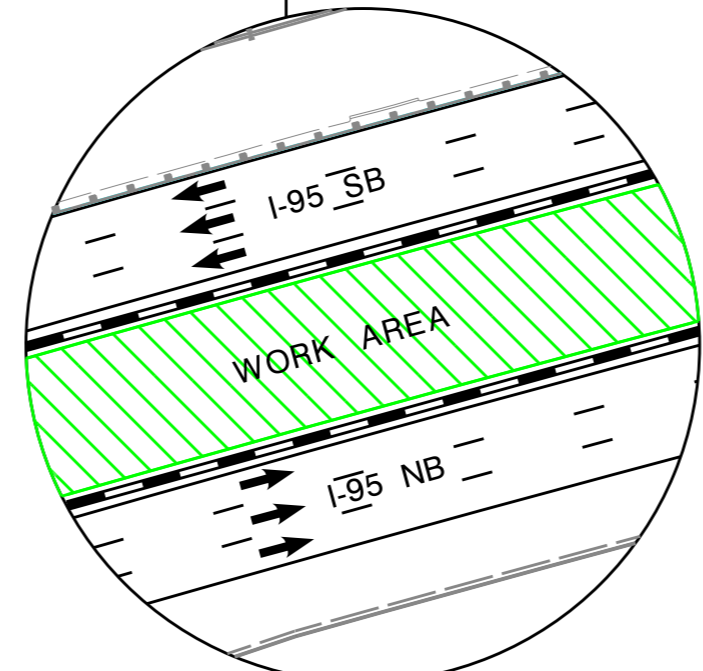


TOWNSHIP OF LOWER MAKEFIELD
TOWNSHIP OF EWING

COUNTY OF BUCKS
COUNTY OF MERCER



NO WORK IN PA



- NOTES:**
- 2 - 11' LANES IN EACH DIRECTION MAINTAINED AT ALL PEAK TIMES SOUTH OF ROUTE 175.
 - 3 - 11' LANES IN EACH DIRECTION MAINTAINED AT ALL PEAK TIMES NORTH OF ROUTE 175.
 - 3.5' MINIMUM LEFT SHOULDER AND 1' MINIMUM RIGHT SHOULDERS.
 - ALL RAMP MOVEMENTS ARE MAINTAINED WITHOUT USE OF DETOURS.

- LEGEND:**
- WORK AREA (STAGE 3)
 - WATERWAY (RIVER OR CANAL)

STAGE 3 - I-95 (I-95 MEDIAN CONSTRUCTION - NJ ONLY)