

**DELAWARE RIVER JOINT TOLL BRIDGE COMMISSION
EXECUTIVE OFFICES
2492 RIVER ROAD
NEW HOPE, PENNSYLVANIA 18938-9519**

**CONTRACT NO. T-668A, CAPITAL PROJECT 0301A
THE SCUDDER FALLS BRIDGE REPLACEMENT PROJECT**

ADDENDUM NO. 9

This **Addendum No. 9** gives additional information in connection with **Contract No. T-668A, Capital Project 0301A** and is hereby made a part of the Contract. This Addendum is to be signed by the Contractor and this **Page AD9-1** is to be attached to the bid proposal.

This Addendum including pages **AD9-1** through **AD9-7** is hereby accepted and agreed that it shall become part of the **Contract No. T-668A, Capital Project 0301A** Documents.

(DATE)

(CONTRACTOR'S NAME)

(SEAL)

BY: _____

ATTEST: _____

A. Revisions to previously issues Responses:

Inquiry 179: Section 103.04 of the General Provisions, as modified by Addendum No. 3, requires the contractor who is awarded the contract to furnish a Performance Bond in an amount equal to 100% of the contract price and a Payment Bond in the amount of 100% of the contract price. Section 103.04 also provides that each participant in a joint venture is to submit a separate Performance Bond and a separate Payment Bond. The result of this requirement is that for a joint venture composed of three partners, for example, the Commission would receive three Performance Bonds in an amount totaling 300% of the contract price and three Payment Bonds in an amount totaling 300% of the contract price, which is excessive and unnecessary. It would also cause joint ventures to incur higher bond costs, putting them at a competitive disadvantage relative to bidders who are not joint ventures. In addition, one of the reasons joint ventures are typically formed for projects of this size is because the members of the joint venture may not individually have the bonding capacity to pursue the project, but they do have the bonding capacity to collectively pursue the project. Will the Commission modify this bonding provision such that joint ventures are permitted to submit one Performance Bond and one Payment Bond, each in an amount equal to 100% of the contract price, rather than requiring each joint venture participant to submit separate bonds?

Original Response 179: This bonding provision will remain unchanged. Your attention is directed to Contract General Provision SECTION 103, sub-section 103.04 SURETY BONDS for compliance with this requirement.

1st Revision to Response 179: This bonding provision will remain unchanged. Your attention is directed to Contract General Provision SECTION 103, sub-section 103.04 SURETY BONDS for compliance with this requirement. To clarify, each participant in a Joint Venture shall submit a separate Performance Bond and a separate Payment Bond equal to the amount of the contract for which they are responsible. The sum of these separate Performance Bonds must equal the contract bid amount. The sum of the separate Payment Bonds must also equal the contract bid amount. In addition, the sum of the Maintenance Bonds from the Joint Venture participants must equal 5% of the contract amount, with each participant submitting a separate Maintenance Bond equal to their portion of the contract for which they are responsible.

***2nd Revision to Response 179:** The bonding provision is revised as follows: A Performance Bond and a Payment Bond may be submitted for the Joint Venture entity equal to the contract amount, or a Performance Bond and a Payment Bond may be submitted by each participant of the Joint Venture equal to the amount of the contract for which they are responsible. The sum of these separate Performance Bonds must equal the contract amount.

***3rd Revision to Response 179:** The bonding provision is revised as follows: A Performance Bond and a Payment Bond may be submitted for the Joint Venture entity equal to the contract amount, or a Performance Bond and a Payment Bond may be submitted by each participant of the Joint Venture equal to the amount of the contract for which they are responsible. The sum of these separate Performance Bonds must equal the contract amount. A single Maintenance Bond from the Joint Venture may be provided, and must be equal to 5% of the contract amount; or, separate Maintenance Bonds may be submitted by each participant of the Joint Venture for the work for which they are responsible. The sum of these separate Maintenance Bonds must equal 5% of the contract amount.

END OF INQUIRIES

ADDENDUM NO. 9

I. CHANGES TO THE CONTRACT INDEX

No changes in this Addendum

II. CHANGES TO THE NOTICE TO CONTRACTOR

No changes in this Addendum

III. CHANGES TO THE CONTRACT PROPOSAL

1. Please be advised that with the issuance of the Schedule of Prices of Contract Proposal in electronic format (Excel spreadsheet file provided in Addendum No. 8 and Addendum No. 9), the total number of pages have changed from A-1 through A-65 to A-1 through A-47, as noted in Addendum No. 8 (page AD8-35). All responses to Inquiries and addendum changes through Addendum No. 9 refer to the page numbers from the original bid documents (i.e., pages A-1 to A-65). For the CONTRACT PROPOSAL (Schedule of Prices), the Contractor shall utilize the Item Number and Sequence Number for locating the associated pay item for changes noted in Addendum No. 8 and Addendum No. 9 and not rely on the referenced page number. Excel spreadsheet provided in Addendum No. 9 reflects all revisions made to date.
2. On Sheet A-26, Replace entries for Item No., Description, Unit, and Quantity for Item No. 1201-1600 (Sequence Number 331) as follows: Item No.: "9999-XXXX"; Description: NO ITEM; Unit: "--"; and Quantity: "--".
3. On Sheet A-40, for Item No. 9000-0062 (Sequence No. 568), change the Description from "Impervious Liner" to "Clay Core", the Units from "SY" to "CY", and the Quantity from "4,098" to "4,650".
4. On Sheet A-45, Change the Description for Item No. 9910-3001 (Sequence Number 660) from "CONDUIT SLEEVE" to "4" CONDUIT SLEEVE".

IV. CHANGES TO THE CONTRACT

1. On Sheet D-14, Change the Quantity for Item No. 4850-0024 (Sequence Number 165) from "843" to "128".
2. On Sheet D-24, Replace entries for Item No., Description, Unit, and Quantity for Item No. 1201-1600 (Sequence Number 331) as follows: Item No.: "9999-XXXX"; Description: NO ITEM; Unit: "--"; and Quantity: "--".
3. On Sheet D-38, for Item No. 9000-0062 (Sequence No. 568), change the Description from "Impervious Liner" to "Clay Core", the Units from "SY" to "CY", and the Quantity from "4,098" to "4,650".
4. On Sheet D-43, Change the Description for Item No. 9910-3001 (Sequence Number 660) from "CONDUIT SLEEVE" to "4" CONDUIT SLEEVE".

V. CHANGES TO THE GENERAL PROVISIONS

No changes in this Addendum

VI. CHANGES TO THE SECTION 100 SPECIAL PROVISIONS

1. On page SP-5 under Section 100 SPECIAL PROVISIONS, PROJECT MILESTONE DATES, under I-295 Signing Implemented, replace the first sentence as follows: The Milestone Date for the I-295 signing implementation is April 02, 2018.
2. On page SP-9 under Section 100 SPECIAL PROVISIONS, LIQUIDATED DAMAGES, (d) Project Milestone Dates Liquidated Damages, replace the first bullet as follows: The Milestone Date for the I-295 signing implementation is April 02, 2018. Liquidated Damages will be assessed at \$5,000.00 per day.

VII. CHANGES TO THE SPECIAL PROVISIONS – PACKAGE A

1. On Page SP A-29 in Package A Special Provisions, add the following paragraph after the 6th paragraph in Section MATERIALS – (a) Precast Concrete Face Panels.
“The area of MSE wall panels shall not exceed 30 square foot for all MSE walls in the project.”
2. On Page SP A-48 in Package A Special Provisions, add the following paragraph after the 6th paragraph in Section MATERIALS – (a) Precast Concrete Face Panels.
“The area of MSE wall panels shall not exceed 30 square foot for all MSE walls in the project.”
3. On Page SP A-63 in Package A Special Provisions, add the following paragraph after the 6th paragraph in Section MATERIALS – (a) Precast Concrete Face Panels.
“The area of MSE wall panels shall not exceed 30 square foot for all MSE walls in the project.”

VIII. CHANGES TO THE SPECIAL PROVISIONS – PACKAGE B

1. On Page SP B-54 in Package B Special Provisions, add the following bullet #4 in Section
513.02.01 MATERIALS
For MSE Walls:
For Precast Facing Panels:
“4. The area of MSE wall panels shall not exceed 30 square foot for all MSE walls in the project.”

IX. CHANGES TO THE SPECIAL PROVISIONS – PACKAGE C

No changes in this Addendum

X. CHANGES TO THE PLANS – GENERAL PLANS

No changes in this Addendum

XI. CHANGES TO THE PLANS – PACKAGE A

PART 1

1. On Sheet 61 of 280 in Package A, Part 1, for Item No. 9000-0062 (Sequence No. 568), change the Description from “Impervious Liner” to “Clay Core”, the Units from “SY” to “CY”, and the Quantity from “4,098” to “4,650”.
2. On Sheet 137 of 280 in Package A, Part 1, for Item No. 9000-0062, change the Description from “Impervious Liner” to “Clay Core” and the Units from “SY” to “CY”.

3. On Sheet 137 of 280 in Package A, Part 1, change the quantity for Item No. 9000-0062 on line 245+00.00 RT from “2849” to “3525”.
4. On Sheet 137 of 280 in Package A, Part 1, change the quantity for Item No. 9000-0062 on line 246+50.00 LT from “1249” to “1125”.
5. On Sheet 137 of 280 in Package A, Part 1, change the total for Item No. 9000-0062 from “4098” to “4650”.

PART 2

6. On Sheet 2 of 173 in Package A, Part 2, replace the first sentence of note 52 as follows: “IT IS ANTICIPATED THAT DURING CONSTRUCTION THE RE-DESIGNATION OF I-95 TO I-295 WILL BE IMPLEMENTED ON APRIL 02, 2018.”

PART 5:

Taylorsville Rd. Bridge, S-36222

7. On Sheet 22 of 62 in Package A – Part 5, in TYPICAL SECTION – MSE ABUTMENT view:
“H, VARIES” dimensions will be revised to show height to the top of deck.
8. On Sheet 22 of 62 in Package A – Part 5, in TYPICAL SECTION – MSE WINGWALLS view:
“H, VARIES” dimensions will be revised to show height to the edge of shoulder.

PA Canal Bridge, S-36221

9. On Sheet 21 of 62 in Package A – Part 5, in TYPICAL SECTION – MSE ABUTMENT view:
“H, VARIES” dimensions will be revised to show height to the top of deck.
10. On Sheet 21 of 62 in Package A – Part 5, in TYPICAL SECTION – MSE WINGWALLS view:
“H, VARIES” dimensions will be revised to show height to the edge of shoulder.

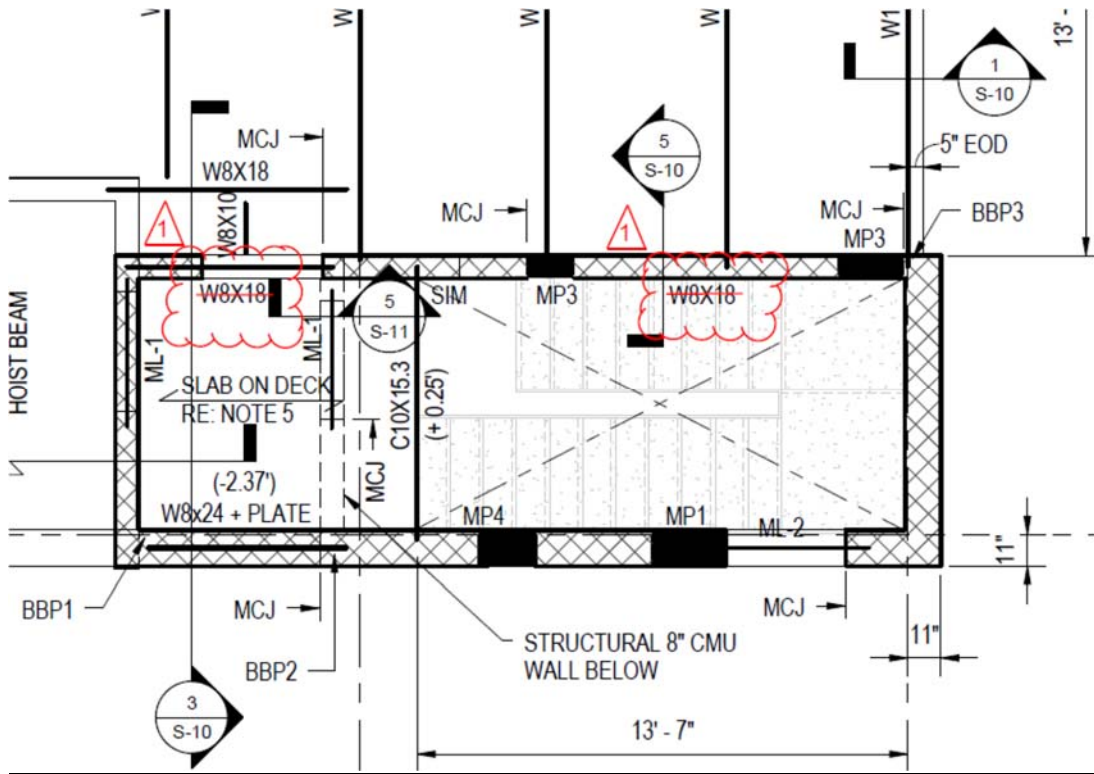
XII. CHANGES TO THE PLANS – PACKAGE B

PART 2

1. On Sheet 220 of 1020 in Package B, Part 2, replace the first sentence of note 56 as follows: “IT IS ANTICIPATED THAT DURING CONSTRUCTION THE RE-DESIGNATION OF I-95 TO I-295 WILL BE IMPLEMENTED ON APRIL 02, 2018.”

XIII. CHANGES TO THE PLANS – PACKAGE C

1. On Sheet S-7 of S-19 in Package C, remove the W8X18 notations that is indicated in two (2) places as shown below.



XIV. ATTACHMENTS

ATTACHMENT 1:

General Specifications - Proposal

- a) Sheets A-1 through A-47

ATTACHMENT 2:

SCHEDULE OF PRICES (Microsoft Office – Excel file)

- a) T-668A Pages A-7 to A-46

XV. REVISION TO ADDENDUM NO. 8:

- 1. In Section VII, move signature block shown below:

“These record plans have been completed and certified by _____ as reflecting constructed conditions with Field changes incorporated. Responsibility for accuracy of the record plan rests with the above engineer.”

“Engineer’s Signature and Certification”

from Revision Number 14 to the end of Revision Number 12.

2. In Section XI, change Revision Number 408 from “For changes to Sheets 190 of 426 to 233 of 426 in Package A, Part 7, see the attached plans”. to “For changes to Sheets 199 to 227 of 426 in Package A, Part 7, see the attached plans”.
3. In Section XIV, ATTACHMENT 1, 1.Revised Plan Sheets change entry i) from “Package A, Part 7: Cross Sections Sheets 190 through 223 and 260 through 274 of 426” to “Package A, Part 7: Cross Sections Sheets 199 through 227 of 426”

END OF ADDENDUM NO. 9