

ELECTRICAL 1Ø PANEL SCHEDULE

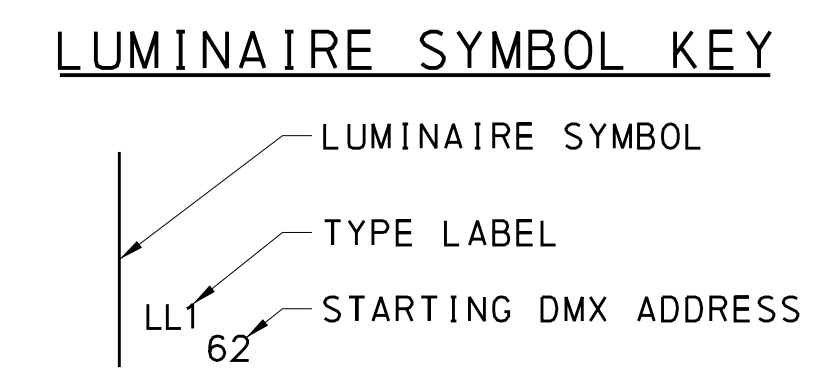
DESIGNATION: LCP
RATING: 120/240V, 1Ø, 3W
BUS RATING: 100 AMPS

LOCATION: BRIDGE STRUCTURE
 MAIN LUGS ONLY
 MAIN CIRCUIT BREAKER: 100 AMPS

SERVICE	KVA		BKR. AMP.	CKT. No.	A B	CKT. No.	BKR. AMP.	KVA		SERVICE
	ØA	ØB						ØA	ØB	
LETTERS 'T', 'R', & 'E'	1.20		20	1		2	20	0.72		LETTER 'W'
LETTERS 'O' & 'N'		1.20		3		4		1.20	1.20	LETTERS 'T', 'H' & 'E'
LETTERS 'N' & 'T'	0.72			5		6		1.20		LETTERS 'O' & 'R'
LETTER 'M'		0.72		7		8		0.72		LETTERS 'L' & 'D'
LETTERS 'A' & 'K'	1.20			9		10		1.20		LETTERS 'T', 'E', & 'S'
LETTERS 'E' & 'S'		0.96		11		12		1.20		LETTERS 'A' & 'K'
MAIN	6.24		60	13		14		--		SPARE
		6.00		15		16		--		SPARE
MAIN	6.44		100	17		18	20	0.20		RECEPTACLE
		6.40		19		20		0.40		TIME CLOCK/CONTROL
CONTACTOR	6.24		60	21		22		--		SPARE
		6.00		23		24		--		SPARE

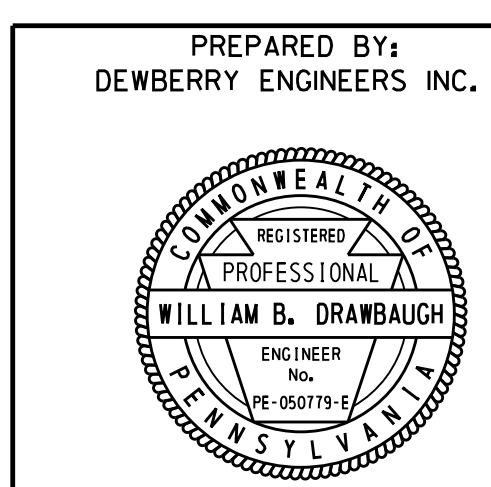
LOAD- ØA: 6.44 KVA
TOTAL: ØB: 6.40 KVA
12.84 KVA

MOUNTING: SURFACE POLES: 24
MIN. SHORT CIRCUIT RATING: 22,000 AIC
MANUFACTURER: SQUARE D (BASIS OF DESIGN)
TYPE: NQ0D
SPLIT-BUS PANELBOARD



DELAWARE RIVER JOINT TOLL BRIDGE COMMISSION
MORRISVILLE BOROUGH, BUCKS COUNTY, PENNSYLVANIA
AND
CITY OF TRENTON, MERCER COUNTY, NEW JERSEY

**LOWER TRENTON TOLL-SUPPORTED
BRIDGE REPLACEMENT OF SIGN
LIGHTING ELEMENTS**



SIGN DETAIL

SCALE: AS SHOWN	CONTRACT NO. TS-687A	DWG. NO. 4 OF 6	SHEET NO. 7 OF 12
DATE: MAR 28, 2017			

Mark	Description	By	Chk'd	Recm'd	Date
REVISIONS					

g:\50067197\CAD\Civil\Plans\Lighting\tdr01.dgn 3/21/2017 10:33:32 AM