

DELAWARE RIVER
JOINT TOLL BRIDGE COMMISSION
MINUTES
MEETING OF MAY 20, 2013

DELAWARE RIVER JOINT TOLL BRIDGE COMMISSION

MEMBERS OF THE COMMISSION

NEW JERSEY

HONORABLE DAVID R. DEGEROLAMO
Chairman

HONORABLE GEOFFREY S. STANLEY

HONORABLE EDWARD J. SMITH

HONORABLE WILLIAM J. HODAS

HONORABLE YUKI MOORE LAURENTI

PENNSYLVANIA

HONORABLE GAETAN J. ALFANO
Vice Chairman

VACANT

HONORABLE JOESEPH ULIANA

HONORABLE DANIEL GRACE
Secretary-Treasurer

HONORABLE JACK MUEHLHAN

DELAWARE RIVER JOINT TOLL BRIDGE COMMISSION

STANDING COMMITTEES

PERSONNEL COMMITTEE

PENNSYLVANIA: Daniel Grace*, Joseph Uliana**

NEW JERSEY: William Hodas, Geoffrey Stanley

PROJECTS COMMITTEE

PENNSYLVANIA: Joseph Uliana*, Daniel Grace**,

NEW JERSEY: David DeGerolamo, William Hodas

FINANCE COMMITTEE

NEW JERSEY: Yuki Moore Laurenti*, Edward Smith

PENNSYLVANIA: Gaetan Alfano, Jack Muehlhan

PROFESSIONAL SERVICES COMMITTEE

NEW JERSEY: David DeGerolamo*, Yuki Moore Laurenti

PENNSYLVANIA: Gaetan Alfano, Jack Muehlhan

AUDIT COMMITTEE

PENNSYLVANIA: Gaetan Alfano*, Joseph Uliana

NEW JERSEY: David DeGerolamo, Edward Smith

ADMINISTRATIVE COMMITTEE

NEW JERSEY: Yuki Moore Laurenti*, Geoffrey Stanley

PENNSYLVANIA: Jack Muehlhan, Daniel Grace
Odessa Jenkins, John Anderson, Sean McNeeley

SELECTION COMMITTEE

PENNSYLVANIA: Daniel Grace, Joseph Uliana

NEW JERSEY Edward Smith, William Hodas

*Chairman of Committee

** Temporary assignment do to the vacancy of Melissa Heller

X:\Wendy's Files\Commission Mtgs from.2003 to present\2013\Committee Pages updated April 2012\Standing Committecs- 8-01-12.doc

Wednesday, May 29, 2013

**DELAWARE RIVER JOINT TOLL BRIDGE COMMISSION
RECAPITULATION OF COMMITTEE MEMBERSHIP**

DeGerolamo	(1) Projects Committee (2) Professional Services Committee (Chairman) (4) Audit Committee
Alfano	(1) Finance Committee (2) Professional Services Committee (3) Audit Committee (Chairman)
Grace	(1) Personnel Committee (Chairman) (2) Administrative Committee (3) Selection Committee (4) Projects Committee *
Vacant*	(1) Projects Committee (2) Personnel Committee
Hodas	(1) Projects Committee (2) Personnel Committee (3) Selection Committee
Laurenti	(1) Finance Committee (Chairman) (2) Professional Services Committee (3) Administrative Committee (Chairman)
Muehlhan	(1) Finance Committee (2) Professional Services (3) Administrative Committee
Smith	(1) Finance Committee (2) Audit Committee (3) Selection Committee
Stanley	(1) Personnel Committee (2) Administrative Committee
Uliana	(1) Projects Committee (Chairman) (2) Audit Committee (3) Selection Committee (4) Personnel Committee*

DELAWARE RIVER JOINT TOLL BRIDGE COMMISSION

PROFESSIONAL ASSOCIATES

CONSULTING ENGINEERS

TRANSYSTEMS CONSULTING ENGINEERS

Paramus, New Jersey

LEGAL COUNSEL

STRADLEY, RONON, STEVENS & YOUNG

Philadelphia, Pennsylvania

FLORIO, PERRUCCI, STEINHARDT & FADER

Phillipsburg, New Jersey

EMPLOYMENT COUNSEL

STEVENS & LEE

Philadelphia, Pennsylvania

WOLFF AND SAMSON

West Orange, New Jersey

AUDITOR

BOWMAN & COMPANY

Voorhees, New Jersey

FINANCIAL ADVISOR

NW FINANCIAL GROUP

Jersey City, New Jersey

COMMUNICATIONS CONSULTANT

BRABENDER COX

Pittsburg, Pennsylvania

INVESTMENT ADVISOR

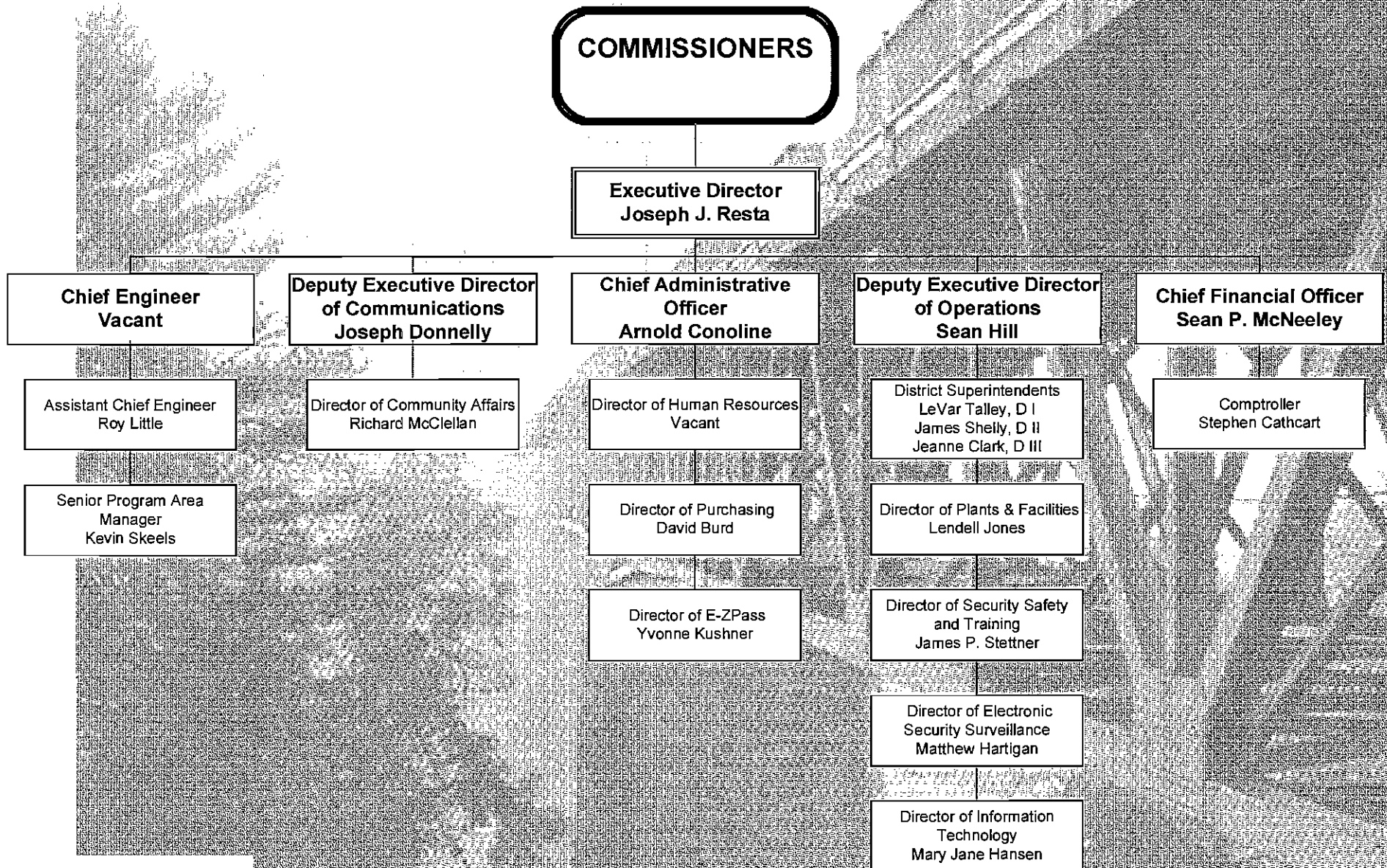
PFM BANK

Pennsylvania

Revised 2012

DELAWARE RIVER JOINT TOLL BRIDGE COMMISSION

ORGANIZATION CHART



Delaware River
Joint Toll Bridge
Commission

DELAWARE RIVER JOINT TOLL BRIDGE COMMISSION

Meeting of May 20, 2013

INDEX TO MINUTES

	PAGE
1. Call to Order	1
2. Appearances.....	1 - 2
3. Roll Call.....	2
4. Welcome Remarks of Chairman	2
5. Introduce any Comments from the Public	2
6. Executive Director's Report	2 - 4
7. Proclamation to Cairn University-100 Anniversary.....	4 - 5
7. Approval of Minutes for Commission Meeting held April 29, 2013.....	5 - 6
8. Approval of Operations Report for the Month April 2013	6
9. Sunesys, LLC License Agreement for Centre Bridge Stockton Toll Supported Bridge	6 - 7
10. Sunesys, LLC License Agreement of Calhoun Street Toll Supported Bridge Crossing.....	7
11. Service Electric Cable TV License Agreement-Portland Columbia Pedestrian Bridge Crossing	7 - 8
12. Verizon Crossing-Lower Trenton Toll Supported Bridge Agreement Execution-Back Up Payments.....	8 - 9
13. Riverton-Belvidere Toll Supported Bridge Maintenance Garage Roof Replacement TS-523A, Rejection of Single Bid Received, Revising Scope and Rebidding.....	9

DELAWARE RIVER JOINT TOLL BRIDGE COMMISSION

Meeting of May 20, 2013

14.	Treadle Frame Repair and Replacement at I-78 and Delaware Water Gap (I-80) Toll Bridges, Contract TO-427C			10
9.	Appointment of Kellie Marie Thoms, Toll Collector, Delaware Water Gap Toll Bridge-District III	10	-	11
26.	Approval for Payment of Invoice Stradley Ronon, PA Legal Counsel			11
27.	Approval for Payment of Invoice Florio, Perrucci, Steinhardt and Fader, NJ Legal Counsel.....			11
28.	Approval for Payment of Invoice Stevens & Lee, PA Labor Counsel			12
29.	Approval of Payment of Invoice Wolff & Samson, NJ Labor Counsel			12
30.	Election of Officers May 2013 Meeting			13
31.	Nomination of David DeGerolamo as Chairman, Gaetan Alfano, as Vice Chairman, and Yuki Moore Laurenti, Secretary Treasurer			13
32.	Other Nominations.....			13
33.	Casting of the Unanimous Ballot.....	13	-	15
30.	Invite Comments from Public.....	15	-	16
31.	Scheduling of the June 2013 Meeting.....	16	-	17
32.	Adjournment			17

DELAWARE RIVER JOINT TOLL BRIDGE COMMISSION

Meeting of May 20, 2013

CALL TO ORDER

The Regular Monthly Meeting of the Delaware River Joint Toll Bridge Commission was called to Order at the New Hope Executive Offices, 2492 River Road, New Hope, PA. 18938-9519, on Monday May 20, 2013 at 10:30 a.m. pursuant to notice properly forwarded to each member in compliance with the By-laws. David DeGerolamo, Chairman, presided at this Meeting. The Commission met in Executive Session to discuss legal and personnel matters prior to this meeting.

APPEARANCES

COMMISSION MEMBERS:

Hon. Gaetan Alfano (Pennsylvania)
Hon. David DeGerolamo (New Jersey)
Hon. Daniel Grace (Pennsylvania)
Hon. William Hodas (New Jersey)
Hon. Yuki Moore Laurenti (New Jersey) (Via Conference Call)
Hon. Jack Muehlhan (Pennsylvania)
Hon. Edward J. Smith (New Jersey)
Hon. Geoffrey S. Stanley (New Jersey) (Via Conference Call)
Hon. Joseph Uliana (Pennsylvania)

COMMISSION GENERAL COUNSEL:

Jonathan Bloom, Stradley, Ronon, Stevens & Young Pennsylvania
Keith Barrack, Perrucci, Steinhardt & Fader, New Jersey

COMMISSION LABOR COUNSEL:

John Casey, Wolff and Samson, New Jersey
William Payne, Stevens and Lee, Pennsylvania

GOVERNORS REPRESENTATIVES:

Peter Simon, NJ Assistant Counsel Authorities Unit-(Via Conference Call)
Chris Sullivan, PA Deputy General Counsel

REPRESENTING THE COMMISSION'S COMMUNICATIONS CONSULTANTS: BRABENDER COX

Ethan Vickers, Brabender Cox
Nina Tinani, Brabender Cox

COMMISSION STAFF MEMBERS:

Joseph J. Resta, Executive Director

DELAWARE RIVER JOINT TOLL BRIDGE COMMISSION

Meeting of May 20, 2013

Sean Hill, Deputy Executive Director of Operations
Arnold J. Conoline, Chief Administrative Officer
Roy Little, Assistant Chief Engineer
Stephen Cathcart, Comptroller
Joseph Donnelly, Deputy Executive Director of Communications
Wendy Reading, Administrative Services Director/ Assistant Secretary Treasurer to the Commission

OTHERS:

Ryan Bevitz, Representative Santarsiero's Office
Andrew George, Express Times
Dan Dipalo, KS Engineers

ROLL CALL

Joseph Resta, Executive Director, in his capacity as Secretary for this Meeting called the roll, and at the conclusion thereof, reported that there was a quorum present-there being three members present from the Commonwealth of Pennsylvania and four members present from the State New Jersey.

WELCOMING REMARKS OF CHAIRMAN

Chairman DeGerolamo welcomed those persons whose identities are set forth hereinabove under "Appearances".

INTRODUCE ANY COMMENTS FROM THE PUBLIC

Chairman DeGerolamo addressed the meeting and invited any comments from the public on items pertaining to today's Agenda.

EXECUTIVE DIRECTOR'S REPORT

With the continuing warm up of spring, the construction season is now in full swing with projects underway in all three of our districts

The Lumberville-Raven Rock footbridge was reopened for public use as scheduled on May 3, and all remaining work on the bridge is to be completed as scheduled this Friday. The project involved, Miscellaneous structural steel repairs, suspension-system repairs, replacement of suspender plates, concrete deck repairs with a new overlay, new pedestrian railing, cleaning and painting of the superstructure, reconstruction of the retaining wall on the Pennsylvania side, and lighting and electrical upgrades

This popular pedestrian crossing looks as good as when it was originally constructed in 1947 by John A. Roebling's Sons Company of Trenton, N.J.

DELAWARE RIVER JOINT TOLL BRIDGE COMMISSION

Meeting of May 20, 2013

To mark the occasion, we are organizing a Friday morning rededication ceremony that will include dignitaries, representatives from the two canals linked by the bridge, and a descendent of the famous bridge-building Roebling family

We have seen significant progress over the past couple months on the I-78 Toll Bridge PA Approach Paving Improvements Project. The use of uninterrupted 39-hour single-lane traffic configurations on weekends came to an end earlier this month. We are nearing the point in the project where only off-peak and overnight paving work will be taking place. Three lanes will be available in each direction of I-78 during peak periods so the highway can handle overflow from the Easton-Phillipsburg (Route 22) Toll Bridge, which will begin a rehabilitation project later next month.

As work on I-78 winds down, we are now preparing for the upcoming Easton-Phillipsburg project, the engineering department has already hosted a kick-off meeting and a scheduling conference meanwhile, a nearly all-day partnering meeting is scheduled for tomorrow (Tuesday). This multi-faceted project involves two construction seasons; with substantial completion not until 2015. In addition to the main bridge rehabilitation, other areas of scope to be addressed will be; the viaduct leading to the bridge on the New Jersey side; the smaller box-beam bridge that crosses Route 611 on the Pennsylvania side; the overpass that crosses Third Street in Easton; the various ramps to and from Route 22 immediately west of the toll bridge in Easton; The approach roadways on both ends of the crossing; and the toll plaza on the New Jersey side. The real challenge on this project is how work will take place – in confined areas with traffic being maintained through the project area at all times. By necessity, Route 22 traffic will be limited to single lanes of travel in each direction through the construction zone for roughly 15 of the next 18 months, resulting in peak-period delays for Route 22 motorists. Because of this, we will be urging folks to use I-78 as an alternative route whenever possible as a means of avoiding the construction, traffic and delays at the Easton-Phillipsburg Toll Bridge. A specific start date for traffic restrictions has yet to be determined, but it's anticipated that it will be in mid-June.

Moving to other matters, the Commission received a New Jersey Historic Preservation Award last week. This is the second time in three years that the Commission has received such an honor from New Jersey. The latest award is for the archaeological research that was conducted in Ewing, N.J. as part of our I-95/Scudder Falls Bridge Replacement Project. There are a lot of people who helped to make this award possible in terms of planning, excavation and research and cataloging. First, is our Scudder Falls project team who guided this effort as part of the compliance process for the National Environmental Policy Act, second, are the archaeologists from AECOM, Inc. who did the field work, the follow-up research and the preparation of materials for permanent safekeeping at the New Jersey State Museum.

Congratulations are also warranted today for an entirely different set of individuals -- the men and women who helped manage two competing gun rallies in the vicinity of the Lower Trenton Bridge in Morrisville on the 11th, the emotionally charged situation in which gun enthusiasts and gun-control advocates were competing to demonstrate on or near our facilities commanded not only our attention, but a well-planned course of action as well. The advance coordination the Commission had with Morrisville Police and the State Police in both New Jersey and Pennsylvania helped to make for a good outcome for everyone involved. There is a lot of credit

DELAWARE RIVER JOINT TOLL BRIDGE COMMISSION

Meeting of May 20, 2013

to spread around. At the Commission, virtually every department was involved to some degree or another. In particular, I want to mention, District I Superintendent LeVar Talley and his team. We are fortunate to be able to exploit the collective former police experience of JP Stettner and his team, and Matt Hartigan and his team, and Arnie Conoline; Community Affairs Director Richard McClellan provided invaluable information as he scoured the internet for the latest updates from the competing groups. What really carried the day, however, was the police presence that was deployed, our liaisons from NJ Sergeant First Class Bob Sagan and PA Sergeant Mike Minsavage recognized early on that this event was extraordinary for the Commission and based on their recommendations, enabled the increased trooper presence, led in the field by Sergeant. John Nedorastack of the PA State Police. In addition, I want to thank the Morrisville Police Department and, in particular, the municipality's acting police chief, Lt. Tom Herron

Safe and efficient crossing was our primary concern with the competing gun events on the 11th and Safe and efficient crossing will be operative for this coming three-day Memorial Day holiday weekend. Our simple advice for travelers is to plan ahead and allow extra time to reach their destinations

Mr. Chairman that concludes my report

PROCLAMATION TO CAIRN UNIVERSITY-100 ANNIVERSARY

Chairman DeGerolamo addressed the meeting and presented to Commission Muehlhan, Cairn University Trustee a proclamation congratulating them on their 100 year anniversary. Chairman DeGerolamo then read the Proclamation and requested it be included in the official minutes of this meeting.

Whereas, the Delaware River Joint Toll Bridge Commission is a bistate transportation agency serving a 140-mile jurisdiction from the Philadelphia/Bucks County line in the south to the New Jersey/New York boundary in the north; and

Whereas, Bucks County, Pennsylvania hosts 12 of the Commission's bridges – the most of any county in the Commission's service area; and

Whereas, Cairn University is a renowned institution of higher learning in Langhorne, Bucks County, Pennsylvania, with an institutional lineage dating back to 1913; and

Whereas, Cairn University has a long and distinguish record of guiding, inspiring and educating young Americans by fostering their intellectual development and spiritual maturation; and

Whereas, Cairn University's development and mission of enlightenment was enhanced by the 1951 merger forged by the Bible Institute of Philadelphia and the Philadelphia School of the Bible and the Philadelphia Bible Institute; and

DELAWARE RIVER JOINT TOLL BRIDGE COMMISSION

Meeting of May 20, 2013

Whereas, this formed the Philadelphia Bible Institute and later the Philadelphia College of Bible, eventually relocating from Center City Philadelphia to Langhorne in 1979; and

Whereas, the Commonwealth of Pennsylvania granted approval for university status and the institution changed its name to the Philadelphia Biblical University in 2000; and

Whereas, the University's Board of Trustees changed its name to Cairn University last year; and

Whereas, Cairn University's core commitment is to prepare students for Christian service and teaching the Bible; and

Whereas, Cairn University also provides students with the opportunity to earn degrees in business, education, music and social work; and

Whereas, Cairn University has earned the respect and admiration of the Commission as a distinguished private Christian university with a reputation for academic excellence and the ability to prepare students for professional service in the church, society and the world; and

Whereas, 2013 is Cairn University's hundredth-anniversary year.

Now, Therefore, Be It Resolved by the Delaware River Joint Toll Bridge Commission assembled for a Meeting at New Hope, Pennsylvania this 20th day of May 2013: That this Commission hereby Congratulates

Cairn University

Commends its century-long legacy of nurturing young biblically minded, well-educated, and professional men and women; and

Be It Further Resolved: That this Resolution be included in the Minutes of this Meeting and a duly authenticated ceremonial copy be transmitted to Cairn University by Commission member and Cairn University Trustee Jack Muehlhan .

APPROVAL OF MINUTES FOR COMMISSION MEETING HELD APRIL 29, 2013

R: 2293-05-13- ADM-01-05-13

Chairman DeGerolamo addressed the meeting and requested the adoption of a Resolution approving the minutes of the Commission Meeting held April 29, 2013.

At the conclusion of the review, Commissioner Smith moved and Commissioner Uliana seconded the adoption of the following Resolution:

DELAWARE RIVER JOINT TOLL BRIDGE COMMISSION

Meeting of May 20, 2013

"RESOLVED, by the Delaware River Joint Toll Bridge Commission at its' Regular Meeting assembled this 20th day of May, 2013, that the minutes of the Regular Commission Meeting held on April 29, 2013 be and the same hereby are approved."

Chairman DeGerolamo then invited any further questions on the Resolution. No further questions were presented and the Resolution was unanimously adopted.

APPROVAL OF OPERATIONS REPORT FOR THE MONTH OF APRIL 2013

R: 2294-05-13- ADM-02-05-13

Chairman DeGerolamo addressed the meeting and asked if there were any questions on any of the reports contained in the "Operations Report.

At the conclusion of the review, Commissioner Smith moved and Commissioner Uliana seconded the adoption of the following Resolution:

"RESOLVED, by the Delaware River Joint Toll Bridge Commission at its Regular Meeting assembled this 20th day of May, 2013, that the Operations Report, which reflects Commission activity for the month of April, 2013 is hereby approved."

Chairman DeGerolamo invited questions on the Resolution. No questions were presented and the Resolution was unanimously adopted.

SUNESYS, LLC LICENSE AGREEMENT FOR CENTRE BRIDGE STOCKTON TOLL SUPPORTED BRIDGE

R: 2295-05-13- FIN-01-05-13

Chairman DeGerolamo addressed the meeting and asked the Commission members if, after their review, there were any questions.

At the conclusion of the review, Commissioner Alfano moved and Commissioner Uliana seconded the adoption of the following Resolution:

"RESOLVED, by the Delaware River Joint Toll Bridge Commission at its Regular Meeting assembled this 20th day of May, 2013, via this resolution, that the Commission approve a utility crossing License Agreement with SUNESYS, LLC of Warrington, PA for their continued crossing of the Centre Bridge-Stockton Toll-supported Bridge and the adjacent property of the Delaware River Joint Toll Bridge Commission. The annual revenue during the initial five-year term of this Agreement is \$20,462.00; and

"RESOLVED, the revenue generated is to be deposited into General Ledger Account 4600, Other Income; and

"RESOLVED, the Executive Director is hereby authorized to approve and execute all necessary contracts on behalf of the Commission."

DELAWARE RIVER JOINT TOLL BRIDGE COMMISSION

Meeting of May 20, 2013

Chairman DeGerolamo invited questions on the Resolution. No questions were presented and the Resolution was unanimously adopted.

SUNESYS LLC LICENSE AGREEMENT FOR CALHOUN STREET TOLL SUPPORTED BRIDGE CROSSING

R:2296-05-13 – FIN-02-05-13

Chairman DeGerolamo addressed the meeting and asked the Commission members if, after their review, there were any questions.

At the conclusion of the review, Commissioner Grace moved and Vice Chairman Alfano seconded the adoption of the following Resolution:

“RESOLVED, by the Delaware River Joint Toll Bridge Commission at its Regular Meeting assembled this 20th day of May 2013, that the Commission approve a utility crossing License Agreement with SUNESYS, LLC of Warrington, PA for their continued crossing of the Calhoun Street Toll-supported Bridge and the adjacent property of the Delaware River Joint Toll Bridge Commission. The annual revenue during the initial five-year term of this Agreement is \$18,512.00; and

“RESOLVED, the revenue generated is to be deposited into General Ledger Account 4600, Other Income; and

“RESOLVED, the Executive Director is hereby authorized to approve and execute all necessary contracts on behalf of the Commission.”

Chairman DeGerolamo invited questions on the Resolution. No questions were presented and the Resolution was unanimously adopted.

SERVICE ELECTRIC CABLE TV LICENSE AGREEMENT-PORTLAND COLUMBIA PEDESTRIAN BRIDGE CROSSING

R: 2297-05-13- FIN-03-05-13

Chairman DeGerolamo addressed the meeting and asked the Commission members if, after their review, there were any questions.

At the conclusion of the review, Commissioner Muehlhan moved and Commissioner Uliana seconded the adoption of the following Resolution:

“RESOLVED, by the Delaware River Joint Toll Bridge Commission at its Regular Meeting assembled this 20th Day of May 2013, that the Commission approve a utility crossing License Agreement with Service Electric Cable T.V., Inc. of Allentown, PA for their continued crossing of the Portland-Columbia Pedestrian Bridge and the adjacent property of the Delaware River Joint Toll Bridge Commission. The annual revenue during the initial five-year term of this Agreement is \$10,660.00; and

DELAWARE RIVER JOINT TOLL BRIDGE COMMISSION

Meeting of May 20, 2013

“RESOLVED, the revenue generated is to be deposited into General Ledger Account 4600, Other Income; and

“RESOLVED, the Executive Director is hereby authorized to approve and execute all necessary contracts on behalf of the Commission.”

Commissioner Uliana addressed the meeting and said:

“Just to expand on this, we are trying to standardize our utility crossing rates in order to bring them in line with what the marketplace is, because most of this has been happening over a several year period at the Commission. This is a culmination of a lot of that activity in order to bring our crossing fees in line with what should be market rate and those fees in were on an annual rate, and now they are based per foot rate.”

Chairman DeGerolamo invited questions on the Resolution. No questions were presented and the Resolution was unanimously adopted.

VERIZON CROSSING-LOWER TRENTON TOLL SUPPORTED BRIDGE AGREEMENT EXECUTION –BACK-UP PAYMENTS

R-2298-05-13 – FIN-04-05-13

Chairman DeGerolamo addressed the meeting and asked the Commission members if, after their review, there were any questions.

At the conclusion of the review, Commissioner Grace moved and Commissioner Uliana seconded the adoption of the following Resolution:

“RESOLVED, by the Delaware River Joint Toll Bridge Commission at its Regular Meeting assembled this 20th Day of May 2013, that the Commissioners authorize legal counsel to formally demand that Verizon execute the Commission’s Standard form of Utility Crossing License Agreement and pay, based on the Commission’s approved rate schedule, all outstanding licenses fees that have accrued since Verizon’s last payment in 2007, and that Verizon be further advised that if the License Agreement is not executed and the arrearage is not paid within 30 days, that the Commissioners will authorize by separate resolution that counsel take the necessary steps to enforce the removal of Verizon’s facilities from the Lower Trenton Toll-Supported Bridge and seek restitution for Verizon’s use of the Bridge since 2008.”

Vice Chairman Alfano addressed the meeting, and said:

“If I could, I think it is the sense of this Commission that it's inequitable that Verizon has utilized our crossing since 2008 and not paid anything in connection with that use. Someone pointed out on committee day, if that had been someone using a Verizon service, they certainly wouldn't had been able to go five years without paying for it. So what we have authorized counsel to do is essentially give Verizon their best and final chance to resolve this with us. If they can't resolve it

DELAWARE RIVER JOINT TOLL BRIDGE COMMISSION

Meeting of May 20, 2013

with us, take whatever legal action is appropriate including a court order requiring Verizon to move their facilities from our facilities, as well as suing Verizon for any past due amounts that they owe this Commission."

Commissioner Uliana addressed the meeting and said:

"Also part of the fairness is that they paid the same rate as the three others who were just approved to pay who were all different companies in the same telecommunications business as Verizon. So we are trying to treat everybody fairly here. It's unfair they would, one: seek to avoid paying that and, two: really receive free services for almost six years."

Commissioner Smith addressed the meeting and said:

"I too was quite surprised to find that there has been no payment, and there certainly has been a service provided by this Commission that is entitled to be compensated for and that there had been no payments made for that long from a company of such a magnitude. I find that quite surprising and wholeheartedly support this resolution and hopefully we can resolve this in an equitable manner without it becoming more complicated."

Chairman DeGerolamo invited questions on the Resolution. No questions were presented and the Resolution was unanimously adopted.

RIVERTON-BELVIDERE TOLL SUPPORTED BRIDGE MAINTENANCE GARAGE ROOF REPLACEMENT TS-523A, REJECTION OF SINGLE BID RECEIVED, REVISING SCOPE AND REBIDDING

R: 2299-05-13-ENG-01-05-13

Chairman DeGerolamo addressed the meeting and asked the Commission members if, after their review, there were any questions.

At the conclusion of the review, Commissioner Hodas moved and Commissioner Uliana seconded the adoption of the following Resolution:

"RESOLVED, by the Delaware River Joint Toll Bridge Commission at its' Regular Meeting assembled this 20th day of May 2013, that the Commission reject the bid received and publicly opened on April 30, 2013 from D.A. Nolt for construction contract T-523A Riverton-Belvidere Toll Supported Bridge Maintenance Garage Roof Replacement; and

"RESOLVED, the Executive Director is hereby authorized to reject the bid received on behalf of the Commission."

Chairman DeGerolamo invited questions on the Resolution. No questions were presented and the Resolution was unanimously adopted.

DELAWARE RIVER JOINT TOLL BRIDGE COMMISSION

Meeting of May 20, 2013

TREADLE FRAME REPAIR AND REPLACEMENT AT I-78 AND DELAWARE WATER GAP (I-80) TOLL BRIDGES, CONTRACT TO-427C

R-2300-05-13 - ENG-02-05-13

Chairman DeGerolamo addressed the meeting and asked the Commission members if, after their review, there were any questions.

At the conclusion of the review, Commissioner Muehlhan moved and Commissioner Grace seconded the adoption of the following Resolution:

“RESOLVED, by the Delaware River Joint Toll Bridge Commission at its Regular Meeting assembled this 20th day of May 2013, via this resolution, award the construction Contract No. CM-543A, Construction Management and Construction Inspection Services for New Hope-Lambertville Toll Bridge Pavement Rehabilitation and Approach Bridges Repairs, to JMT of Trenton, New Jersey for a not-to-exceed amount of \$752,729.58 and;

“RESOLVED, Identify the General Reserve Fund as the source of funds required for payment of any invoices and;

“BE IT FURTHER RESOLVED, The Executive Director is hereby authorized to approve and execute all necessary contracts on behalf of the Commission.”

Chairman DeGerolamo invited questions on the Resolution. No questions were presented and the Resolution was unanimously adopted

APPOINTMENT OF KELLIE MARIE THOMS, TOLL COLLECTOR, DWG TOLL BRIDGE, DISTRICT III

R-2301-05-13-PER-01-05-13

Chairman DeGerolamo addressed the meeting and asked the Commission members if, after their review, there were any questions.

At the conclusion of the review, Commissioner Hodas moved and Commissioner Grace seconded the adoption of the following Resolution:

“RESOLVED, by the Delaware River Joint Toll Bridge Commission at its Regular Meeting assembled this 20th day of May 2013, via this resolution, authorizes the appointment of Kellie Marie Thoms to the position of Toll Collector at the Delaware Water Gap Toll Bridge with starting compensation set at \$36,704 per annum. Which is the minimum step in the pay range for the Toll Collector Position (\$36,704- \$46,847) pending satisfactory completion of the required personnel processing; and

“RESOLVED, that the Commission authorizes the Executive Director to effect the appointment of Kellie Marie Thoms to the Toll Collector position, pending satisfactory completion of the required personnel processing.”

DELAWARE RIVER JOINT TOLL BRIDGE COMMISSION

Meeting of May 20, 2013

Chairman DeGerolamo invited questions on the Resolution. No questions were presented and the Resolution was unanimously adopted.

APPROVAL FOR PAYMENT OF INVOICE STRADLEY RONON, PA LEGAL COUNSEL

R: 2302-05-13- ACCT -01-05-13

Chairman DeGerolamo addressed the meeting and asked the Commission members if, after their review, there were any questions.

At the conclusion of the review, Vice Chairman Alfano moved and Commissioner Grace seconded the adoption of the following Resolution:

“RESOLVED, by the Delaware River Joint Toll Bridge Commission at its Regular Meeting assembled this 20th day of May, 2013, via this Resolution authorizing approval for payment of invoice # 10305428, and #10305437 in the total amount of \$ 6,833.00 for Professional Services Rendered to Stradley Ronon, PA Legal Counsel; and

“RESOLVED: identifying the Operating Fund as the source of funds required for any and all disbursements.”

Chairman DeGerolamo invited questions on the Resolution. No questions were presented and the Resolution was unanimously adopted.

APPROVAL FOR PAYMENT OF INVOICE FLORIO, PERRUCCI, STEINHARDT AND FADER, NJ LEGAL COUNSEL

R: 2303-05-13- ACCT -02-05-13

Chairman DeGerolamo addressed the Meeting and asked the Commission Members if, after their review, there were any questions.

At the conclusion of the review, Vice Chairman Alfano moved and Commissioner Grace seconded the adoption of the following Resolution:

“RESOLVED, by the Delaware River Joint Toll Bridge Commission at its Regular Meeting assembled this 20th day of May, 2013, via this Resolution authorizing approval of invoices # 79529, #79530, # 79535, and # 79532 in the total amount due of \$ 7,497.58 for Capital and Non-Capital Professional Services to Florio, Perrucci, Steinhardt and Fader, NJ Legal Counsel; and

RESOLVED: identifying the Operating Fund as the source of funds required for any and all disbursements.”

Chairman DeGerolamo invited questions on the Resolution. No questions were presented and the Resolution was unanimously adopted.

DELAWARE RIVER JOINT TOLL BRIDGE COMMISSION

Meeting of May 20, 2013

APPROVAL FOR PAYMENT OF INVOICE STEVENS & LEE, PA LABOR COUNSEL

R: 2304-05-13- ACCT -03-05-13

Chairman DeGerolamo addressed the meeting and asked the Commission members if, after their review, there were any questions.

At the conclusion of the review, Vice Chairman Alfano moved and Commissioner Grace seconded the adoption of the following Resolution:

"RESOLVED, by the Delaware River Joint Toll Bridge Commission at its Regular Meeting assembled this 20th day of May, 2013, via this Resolution, and authorizes payment of invoice # 390439 in the amount due of \$ 15,239.61 for Professional Services Rendered to Stevens & Lee, PA Labor Counsel.

"RESOLVED: identifying the Operating Fund as the source of funds required for any and all disbursements."

Chairman DeGerolamo invited questions on the Resolution. No questions were presented and the Resolution was unanimously adopted.

APPROVAL FOR PAYMENT OF INVOICE WOLFF & SAMSON, NJ LABOR COUNSEL

R: 2305-05-13- ACCT -04-05-13

Chairman DeGerolamo addressed the meeting and asked the Commission members if, after their review, there were any questions.

At the conclusion of the review, Vice Chairman Alfano moved and Commissioner Grace seconded the adoption of the following Resolution:

"RESOLVED, by the Delaware River Joint Toll Bridge Commission at its Regular Meeting assembled this 20th day of May, 2013, via this Resolution authorizing payment of invoice # 281585, # 281586, and #281588 in the total amount due of \$3,961.00 for professional services rendered to Wolff and Samson, New Jersey Labor Counsel and;

"RESOLVED: identifying the Operating Fund as the source of funds required for any and all disbursements."

Chairman DeGerolamo addressed the meeting and requested to be recorded as abstaining from this vote.

Chairman DeGerolamo then invited questions on the Resolution. No questions were presented and the Resolution was adopted.

DELAWARE RIVER JOINT TOLL BRIDGE COMMISSION

Meeting of May 20, 2013

ELECTION OF OFFICERS MAY 2013 MEETING

R: 2014-05-10

Chairman DeGerolamo addressed the Meeting and said:

"We have now progressed our meeting to the point where we undertake the Annual Election of Officers. The minutes of the last Commission Meeting demonstrated compliance by the Chairman of the Commission's By-Laws and the Chairman now requests the Chairman of the nominating committee to introduce nominations to fill the office of Chairman, Vice-Chairman and Secretary-Treasurer to serve for the ensuing year. At this time I'll turn the gavel over to Commissioner Uliana, Chairman of the Nominating Committee."

NOMINATION OF DAVID DEGEROLAMO AS CHAIRMAN, GAETAN ALFANO, VICE CHAIRMAN AND YUKI MOORE LAURENTI, SECRETARY TREASURER

Commissioner Uliana addressed the meeting and said:

" Mr. Chairman, the Nominating Committee has convened, and we fully discussed all the ramifications involved in our efforts to achieve and accept this on those Commission members who are to be nominated and elected to office for the ensuing year. From that meeting it is my honor to nominate the Honorable David DeGerolamo, member of the Commission from the State of New Jersey, to serve, as the Commission's Chairman, Honorable Gaetan Alfano, member of the Commonwealth of Pennsylvania as the Commissions Vice Chairman, and Honorable Yuki Moore Laurenti, member of the State of New Jersey to service as Secretary Treasurer, for the ensuing year."

OTHER NOMINATIONS

No other nominations except the ones reported hereinabove were made.

CASTING OF THE UNANIMOUS BALLOT

R: 2015-05-10

Executive Director Resta then addressed the Commission and stated that since the nominations for the Offices of CHAIRMAN, VICE CHAIRMAN, and SECRETARY-TREASURER were made, and since no additional nominations had been made for anyone other than DAVID DEGEROLAMO for Chairman; GAETAN ALFANO for Vice Chairman; and YUKI MOORE LAURENTI for Secretary-Treasurer; and further, since motions had been unanimously passed authorizing closure of the nominations, since the nominations were unopposed, he respectfully requested the adoption of a Resolution casting the unanimous ballot for Mr. DeGerolamo, Mr. Alfano, and Ms. Laurenti.

DELAWARE RIVER JOINT TOLL BRIDGE COMMISSION

Meeting of May 20, 2013

Commissioner Muehlhan the moved and Commissioner Grace seconded the adoption of the following Resolution:

Commissioner Smith addressed the meeting and requested being recorded as abstaining from this vote.

Executive Director Resta, then called the Roll:

<u>NEW JERSEY</u>	<u>Yea</u>	<u>Nay</u>	<u>PENNSYLVANIA</u>	<u>Yea</u>	<u>Nay</u>
Mr. Hodas	X		Mr. Grace	X	
Ms. Laurenti	X		Mr. Uliana	X	
Mr. Smith	Abstain		Mr. Muehlhan	X	
Mr. Stanley	X				

Executive Director Resta reported that there were three affirmative votes from Pennsylvania, three affirmative votes from New Jersey, and one abstention. The vote was passed.

"WHEREAS, the By-Laws of the Delaware River Joint Toll Bridge Commission, adopted at its Regular Meeting in 1956 and amended in 1962, 1965, 1969 and 1970, among other things, require the holding of an 'Annual Meeting' in May of each year, at which time, the election of the Commission Members to the Office of Chairman, Vice Chairman and Secretary-Treasurer, may take place; and

"WHEREAS, the Delaware River Joint Toll Bridge Commission has convened on this 20th day of May 2013, in compliance with the By-Laws; and

"WHEREAS, the Commission's By-Laws also provide that the 'Nominating Committee' of the Commission shall consist of all the Commissioners, except the Commissioner holding the Offices of the Chairman and Vice Chairman; and

"WHEREAS, DAVID DEGEROLAMO, a Member of the Commission from the State of New Jersey, has been nominated for the Office of Chairman; and

"WHEREAS, GAETAN ALFANO, a member of the Commission from the Commonwealth of Pennsylvania, has been nominated for the Office of Vice Chairman; and

"WHEREAS, YUKI MOORE LAURENTI, a member of the State of New Jersey has been nominated for the Office of Secretary-Treasurer; --each to serve in such Office for the ensuing year; and

"WHEREAS, no further nominations for the said Offices were made, and motions authorizing closure of said nominations were passed unanimously; and

"WHEREAS, the Commission Members, by the above-described actions have indicated their intent to unanimously elect DAVID DEGEROLAMO as Chairman; GAETAN ALFANO, as Vice Chairman; and YUKI MOORE LAURENTI as Secretary-Treasurer;

DELAWARE RIVER JOINT TOLL BRIDGE COMMISSION

Meeting of May 20, 2013

"NOW THEREFORE, BE IT RESOLVED, by the Delaware River Joint Toll Bridge Commission at this 'Annual Meeting' assembled this 20th day of May 2013, that Commissioner Uliana, in his capacity as Chairman of the Nominating Committee, for this 'Annual Meeting' be, and he hereby is authorized and directed, on behalf of the Commission Members, to cast a unanimous ballot of (1) DAVID DEGEROLAMO, who will serve as Chairman; (2) GAETAN ALFANO, who will serve as Vice Chairman; and (3) YUKI MOORE LAURENTI, who will serve as Secretary-Treasurer of the Delaware River Joint Toll Bridge Commission for the ensuing year, and the said DAVID DEGEROLAMO, GAETAN ALFANO and YUKI MOORE LAURENTI will (effective immediately) assume all authorities, powers and duties vested respectively in the Offices of Chairman, Vice Chairman and Secretary-Treasurer, as set forth in (1) the By-Laws of the Commission; (2) the Minutes of previous Commission Meetings; and (3) the Trust Indenture."

The motion for closure of nominations for David DeGerolamo, Chairman, Gaetan Alfano, Vice Chairman and Daniel Grace, Secretary Treasurer was passed by acclamation.

INVITE ANY COMMENTS FROM PUBLIC

Chairman DeGerolamo addressed the meeting and invited any comments from the Public. There were no comments from the public.

Chairman DeGerolamo then addressed the meeting and said:

"Before I get to the schedule of the June 2013 meeting, I would just like to make a couple brief statements. First, I would like to welcome to our new Deputy Executive Director Mr. Sean Hill. Mr. Hill comes to us with a wealth of information related to the transportation industry, and he will be an asset to us moving forward in relation to everything that we do here from an operation standpoint, even being able to lend a hand in to the engineering side of the world because of his background as an engineer and his work at the parkway and turnpike authority.

It was a very interesting process we went through in going through the interviews. Some of the candidates were very good. Some of the candidates were okay, but when it comes to the end of the day, Mr. Hill was exemplary and rose to the top in regard to all of our Commissioners. So, again, congratulations and welcome aboard.

I just wanted to say thank you to my fellow Commissioners who, although I serve as chair, I look at each and every one of you as associates working together. My role as chair is just to lead us on committee day and Commission day, but your input, each and every one of you, and the various debates that we have from time to time are very important in how we continue to move this Commission forward and how we present ourselves to the public. Regardless of what may be reported from time to time, I am very proud of the transparency of this Commission. I'm

DELAWARE RIVER JOINT TOLL BRIDGE COMMISSION

Meeting of May 20, 2013

very proud of the actions that are taken by this Commission, and I'm very proud of every one of you as Commissioners and the position you have taken and the debate that has taken place to make sure that we do things right. I have been here since January of 2006, and it is an honor for me to serve under the Christie administration, and I look forward to the next year working with each and every one of you as we find a way to move certain projects forward, and as we find a way to make this Commission, this agency, even more effective in how we handle ourselves. So I would just like to thank all of you for your support, and I look forward to the next 12 months working with each and every one of you. And that goes to staff as well. I would be remiss if I did not tell staff that have been here for some time now, some longer, some shorter than me, but the staff that we have in place I think is exemplary as well. I know I used that word on Mr. Hill, but I thank each and every one of you in this room. I thank each and every toll collector, maintenance worker, support staff, bridge officer, I think we put our best foot forward when we put our foot forward in those that work underneath us and with us, and so I thank each and every one of you as well. So again, thank you."

Vice Chairman Alfano addressed the meeting and stated:

"I don't think you could be any better a leader for us. I'm happy that you are re-elected and look forward to working with you. Thank you."

SCHEDULING OF THE JUNE 2013 MEETING

Chairman DeGerolamo addressed the Meeting and stated that the Commission's next meeting will be held June 24, 2013.

The Meeting will be called to Order at 10:30 a.m. in the Boardroom at the New Hope Executive Offices, New Hope Pennsylvania 18938-9519.

Executive Director Resta assured the Commission Members that an "Official Notice of Meeting" would be forwarded to each and every Member of the Commission.

Chairman DeGerolamo addressed the meeting and said:

"I would also like to indicate to my fellow Commissioners that I will be meeting with my Vice-Chair Gaetan Alfano, Joe Resta, Executive Director, and we will be realigning the committees, and I also would like to suggest that we change the way the committee schedule works. I believe it is important for each and every one of us to hear what is being discussed, and there is a way that we can do it by still meeting independently as committees where we can meet consecutively at such time in the morning and then running those meetings one after the other. Having those members that are assigned to specific committees, be the ones that would have the voice in those committees, but the rest of the Commissioners would be able to sit in and listen so as to not have a quorum, we would not be

DELAWARE RIVER JOINT TOLL BRIDGE COMMISSION

Meeting of May 20, 2013

able to make any comment. We will get the schedule out to you and revise suggested committee day membership."

ADJOURNMENT

Chairman DeGerolamo invited a motion for Adjournment.

Vice Chairman Alfano then moved that the Meeting be adjourned and Commissioner Muehlhan seconded the motion. The voice vote was unanimously affirmative and the Meeting was adjourned at 11:00 a.m., Monday, May 20, 2013.

Prepared and submitted by:



WENDY WADOLA READING

Assistant Secretary Treasurer to the Commission

Approved by:



JOSEPH J. RESTA

Executive Director

DELAWARE RIVER JOINT TOLL BRIDGE COMMISSION

Meeting of May 20, 2013

FINANCE

The following pages reflect a report on those items assigned to the Finance, Insurance and Management Committee.

Each item is reported separately and page numbered accordingly hereunder.

DELAWARE RIVER JOINT TOLL BRIDGE COMMISSION

Meeting of May 20, 2013

SUBJECT	DESCRIPTION	PAGE NUMBER
Accounting	Status of Cash Balances at April 30, 2013	1
Accounting	Status of Bond Retirement at April 30, 2013	2
Accounting	Status of Investments at April 30, 2013	3-6
Accounting	Status of Toll Traffic and Revenue & Toll Supported Traffic Month of April 2013 Compared with Month of April 2012	7-20
Accounting	Statistical Summary of Expenditures on Toll Bridges and Toll Supported Bridges Accounts for the Period April 1, 2013 through April 30, 2013	21-33
Accounting	Statement of Revenue and Expenses: Four Months Period ending April 30, 2013	34

DELAWARE RIVER JOINT TOLL BRIDGE COMMISSION

Meeting of May 20, 2013

**There follows Cash Balances of the Commission at April 30, 2013 for the
information and review of the Members:**

COMMISSION CASH DEPOSITS

Wells Fargo Bank, N. A.

Revenue Fund	12,239,411
Payroll Fund	48,773
Insurance Clearing Account	450,000
TOTAL	\$ 12,738,184

CASH DEPOSIT GUARANTEES

Wells Fargo Bank	PA ACT 72	FULL BALANCE
-------------------------	------------------	---------------------

DELAWARE RIVER JOINT TOLL BRIDGE COMMISSION

Meeting of May 20, 2013

STATUS OF BRIDGE SYSTEM REVENUE BONDS at April 30, 2013

SERIES 2005A				SERIES 2007A			SERIES 2007B			SERIES 2012A			SERIES 2012B			Total	
Maturity	Yield	Principal Amount	Maturities & Calls	Yield	Principal Amount	Maturities & Calls	Yield	Principal Amount	Maturities & Calls	Yield	Principal Amount	Maturities & Calls	Yield	Principal Amount	Maturities & Calls	Average Yield	Remaining Outstanding
7/1/2003		N/A			N/A			N/A									-
7/1/2004		N/A			N/A			N/A									-
7/1/2005	2.35%	\$ 330,000	\$ 330,000		N/A			N/A									-
7/1/2006	2.50%	895,000	895,000		N/A			N/A									-
7/1/2007	2.76%	930,000	930,000		N/A			N/A									-
7/1/2008	2.90%	965,000	965,000	3.53%	\$ 470,000	\$ 470,000	4.23%	\$ 3,350,000	\$ 3,350,000								-
7/1/2009	3.06%	1,005,000	1,005,000	3.53%	1,615,000	1,615,000	4.23%	3,350,000	3,350,000								-
7/1/2010	3.23%	1,045,000	1,045,000	3.53%	1,410,000	1,410,000	4.23%	3,650,000	3,650,000								-
7/1/2011	3.39%	1,095,000	1,095,000	3.54%	1,545,000	1,545,000	4.23%	3,850,000	3,850,000								-
7/1/2012	3.53%	1,150,000	1,150,000	3.56%	1,670,000	1,670,000	4.23%	3,950,000	3,950,000								-
7/1/2013	3.66%	1,310,000		3.58%	1,660,000		4.23%	4,200,000		0.35%	4,435,000		0.60%	3,430,000		2.13%	14,935,000
7/1/2014	3.76%	1,000,000		3.62%	1,450,000		4.23%	4,350,000			N/A		1.01%	3,360,000		3.24%	14,160,000
7/1/2015	3.85%	5,220,000		3.66%	1,920,000		4.23%	4,450,000			N/A		1.30%	3,385,000		3.36%	14,975,000
7/1/2016	3.96%	5,540,000	1,415,000	3.73%	1,760,000		4.23%	4,800,000		0.85%	1,030,000		1.61%	3,440,000		3.27%	15,155,000
7/1/2017	4.02%	5,835,000	1,485,000	3.80%	2,000,000		4.23%	4,950,000		1.09%	1,065,000		1.84%	3,490,000		3.38%	15,855,000
7/1/2018	4.04%	6,155,000	1,565,000	3.88%	2,010,000		4.23%	5,250,000		1.33%	1,100,000		2.18%	3,560,000		3.50%	16,510,000
7/1/2019	4.09%	6,480,000	1,645,000	3.96%	2,135,000		4.23%	5,450,000		1.61%	1,145,000			N/A		3.92%	17,565,000
7/1/2020	4.13%	6,840,000	1,735,000	4.03%	2,275,000		4.23%	5,650,000		1.90%	1,195,000			N/A		3.97%	14,225,000
7/1/2021	4.14%	1,825,000	1,825,000	4.08%	2,260,000		4.23%	5,950,000		2.14%	6,825,000			N/A		3.26%	15,035,000
7/1/2022	4.19%	1,920,000	1,920,000	4.12%	3,400,000		4.23%	6,250,000		2.33%	4,000,000			N/A		3.61%	12,650,000
7/1/2023										2.33%	3,165,000			N/A		2.33%	3,165,000
7/1/2023	4.23%	2,020,000	2,020,000	4.17%	2,490,000		4.23%	6,550,000		2.50%	7,445,000			N/A		3.44%	16,485,000
7/1/2024	4.35%	2,125,000	2,125,000	4.21%	2,640,000		4.23%	6,800,000		2.60%	7,815,000			N/A		3.49%	17,255,000
7/1/2025	4.35%	2,235,000	2,235,000	4.25%	2,710,000		4.23%	7,150,000		2.67%	8,205,000			N/A		3.52%	18,065,000
7/1/2026	4.67%	2,345,000	2,345,000	4.27%	2,855,000		4.23%	7,450,000		2.73%	5,000,000			N/A		3.75%	15,305,000
7/1/2026										3.01%	3,620,000			N/A		3.01%	3,620,000
7/1/2027	4.67%	2,450,000	2,450,000	4.30%	2,925,000		4.23%	7,800,000		3.06%	7,015,000			N/A		3.78%	17,740,000
7/1/2027										3.12%	2,000,000			N/A		3.12%	2,000,000
7/1/2028	4.67%	2,560,000	2,560,000	4.35%	3,050,000		4.23%	8,200,000		3.17%	9,355,000			N/A		3.77%	20,605,000
7/1/2029	4.67%	2,675,000	2,675,000	4.35%	3,200,000		4.23%	8,550,000		3.21%	1,345,000			N/A		4.15%	13,095,000
7/1/2030	4.67%	2,795,000	2,795,000	4.35%	3,375,000		4.23%	8,900,000		3.27%	1,385,000			N/A		4.16%	13,660,000
7/1/2031		N/A		4.35%	3,475,000		4.23%	9,350,000			N/A			N/A		4.26%	12,825,000
7/1/2032		N/A		4.39%	3,595,000		4.23%	9,800,000			N/A			N/A		4.27%	13,395,000
7/1/2033		N/A		4.39%	14,000,000			N/A			N/A			N/A		4.39%	14,000,000
7/1/2034		N/A		4.39%	14,700,000			N/A			N/A			N/A		4.39%	14,700,000
7/1/2035		N/A		4.39%	15,435,000			N/A			N/A			N/A		4.39%	15,435,000
7/1/2036		N/A		4.60%	16,205,000			N/A			N/A			N/A		4.60%	16,205,000
7/1/2037		N/A		4.60%	16,955,000			N/A			N/A			N/A		4.60%	16,955,000
		\$ 72,645,000	\$ 38,210,000		\$ 134,170,000	\$ 6,710,000		\$ 150,000,000	\$ 18,150,000		\$ 77,145,000	\$ -		\$ 20,665,000	\$ -		\$ 391,555,000

Footnote:

2012 Series Bonds Refunded remaining balance of 2003A Series and \$30,795,000 of the 2005A Series Bonds.



Delaware River
Joint Toll Bridge
Commission

Delaware River Joint TBC
Purchases Report
Sorted by Fund - Maturity Date
April 1, 2013 - April 30, 2013

DRJTBC

CUSIP	Investment #	Fund	Sec. Type	Original Par Value	Payment Periods	Principal Purchased	Accrued Interest at Purchase	Rate at Purchase	Maturity Date	YTM	Ending Book Value
-------	--------------	------	--------------	-----------------------	-----------------	------------------------	---------------------------------	---------------------	------------------	-----	----------------------

No Activity

3



Delaware River
Joint Toll Bridge
Commission

Delaware River Joint TBC
Investment Classification
Sorted by Fund - Maturity Date
April 30, 2013

DRJTBC

CUSIP	Investment #	Fund	Issuer	Investment Class	Par Value	YTM	Maturity Date	Market Price	Market Date	Market Value	Book Value	Reported Value
Debt Service Fund												
38145C752	10113	01DSF	Goldman Sachs Illa Fed Port	Amort	1,507,289.36	0.006		100.000	04/30/2013	1,507,289.36	1,507,289.38	1,507,289.36
Subtotal					1,507,289.36	0.006				1,507,289.36	1,507,289.38	1,507,289.36
General Reserve Fund												
38145C752	10115	01GRF	Goldman Sachs Illa Fed Port	Amort	13,294,850.21	0.006		100.000	04/30/2013	13,294,850.21	13,294,850.21	13,294,850.21
PAINVEST	10050	01GRF	PA Inwast	Amort	5,073,765.13	0.052		100.000	04/30/2013	5,073,765.13	5,073,765.13	5,073,765.13
4662JOS60	10283	01GRF	JP Morgan Chase & Co CP	Fair	5,000,000.00	0.265	05/08/2013	99.834	04/30/2013	4,994,722.22	4,999,826.38	4,994,722.22
31398AJ94	10096	01GRF	Federal National Mtg Assn	Fair	3,500,000.00	1.517	06/07/2013	100.027	04/30/2013	3,500,945.00	3,500,131.91	3,500,945.00
06536BTH6	10272	01GRF	BANK TOKYO MITSUBISHI	Fair	5,000,000.00	0.240	06/17/2013	99.918	04/30/2013	4,995,933.33	4,998,433.33	4,996,933.33
3133XXYX9	10151	01GRF	Federal Home Loan Bank	Fair	7,659,125.00	0.923	06/21/2013	100.250	04/30/2013	7,659,125.00	7,659,987.77	7,659,125.00
9033E0V11	10273	01GRF	US Bank NA Commercial Paper	Fair	6,889,242.68	0.180	08/01/2013	99.916	04/30/2013	6,889,242.68	6,891,826.30	6,889,242.68
313374Y61	10207	01GRF	Federal Home Loan Bank	Fair	3,980,000.00	0.349	08/28/2013	100.135	04/30/2013	3,985,373.00	3,981,944.68	3,985,373.00
3133X1BV6	10197	01GRF	Federal Home Loan Bank	Fair	3,230,000.00	0.385	09/18/2013	101.855	04/30/2013	3,283,458.50	3,279,605.63	3,283,458.50
912828PL6	10269	01GRF	U.S. Treasury	Fair	10,041,000.00	0.170	12/15/2013	100.410	04/30/2013	10,041,000.00	10,036,154.09	10,041,000.00
31398A5W8	10183	01GRF	Federal National Mtg Assn	Fair	5,230,000.00	0.678	12/18/2013	100.422	04/30/2013	5,252,070.60	5,232,410.02	5,252,070.60
313371UC8	10188	01GRF	Federal Home Loan Bank	Fair	1,889,381.20	0.513	12/27/2013	100.499	04/30/2013	1,889,381.20	1,884,425.71	1,889,381.20
313371UC8	10206	01GRF	Federal Home Loan Bank	Fair	3,964,685.55	0.432	12/27/2013	100.499	04/30/2013	3,964,685.55	3,956,370.65	3,964,685.55
31398AVZ2	10188	01GRF	Federal National Mtg Assn	Fair	3,310,000.00	0.531	03/19/2014	102.273	04/30/2013	3,385,238.30	3,373,157.17	3,385,238.30
31398AXJ6	10206	01GRF	Federal National Mtg Assn	Fair	3,810,000.00	0.549	05/15/2014	102.450	04/30/2013	3,903,345.00	3,886,602.81	3,903,345.00
912828QS2	10245	01GRF	U.S. Treasury	Fair	4,988,892.20	0.284	06/15/2014	100.684	04/30/2013	4,988,892.20	4,980,815.06	4,988,892.20
912828TA8	10262	01GRF	U.S. Treasury	Fair	11,294,100.00	0.233	06/30/2014	100.125	04/30/2013	11,294,100.00	11,282,291.72	11,294,100.00
912828TA8	10270	01GRF	U.S. Treasury	Fair	10,012,500.00	0.215	08/30/2014	100.125	04/30/2013	10,012,500.00	10,003,984.37	10,012,500.00
3135G0BY6	10218	01GRF	Federal National Mtg Assn	Fair	4,500,000.00	0.391	08/28/2014	100.927	04/30/2013	4,541,715.00	4,528,635.42	4,541,715.00
31398AZV7	10190	01GRF	Federal National Mtg Assn	Fair	1,847,960.40	0.760	11/20/2014	103.818	04/30/2013	1,847,960.40	1,830,823.11	1,847,960.40
31398AZV7	10199	01GRF	Federal National Mtg Assn	Fair	2,908,904.00	0.667	11/20/2014	103.818	04/30/2013	2,908,904.00	2,884,097.07	2,908,904.00
912828RV4	10261	01GRF	U.S. Treasury	Fair	3,503,430.00	0.258	12/15/2014	100.098	04/30/2013	3,503,430.00	3,499,581.76	3,503,430.00
3135G0FY4	10218	01GRF	Federal National Mtg Assn	Fair	4,539,510.00	0.432	12/19/2014	100.878	04/30/2013	4,539,510.00	4,523,200.25	4,539,510.00
3135G0FY4	10268	01GRF	Federal National Mtg Assn	Fair	10,087,800.00	0.287	12/19/2014	100.878	04/30/2013	10,087,800.00	10,076,359.64	10,087,800.00
31359MA45	10220	01GRF	Federal National Mtg Assn	Fair	3,807,745.85	0.485	04/15/2015	109.261	04/30/2013	3,807,745.85	3,789,141.59	3,807,745.85
912828NL0	10221	01GRF	U.S. Treasury	Fair	6,214,280.00	0.508	05/30/2015	103.571	04/30/2013	6,214,280.00	6,175,859.04	6,214,280.00
313380L96	10271	01GRF	Federal Home Loan Bank	Fair	10,048,400.00	0.438	11/20/2015	100.484	04/30/2013	10,048,400.00	10,015,701.51	10,048,400.00

Delaware River Joint TBC
Investment Classification
April 30, 2013

Page 2

CUSIP	Investment #	Fund	Issuer	Investment Class	Par Value	YTM	Maturity Date	Market Price	Market Date	Market Value	Book Value	Reported Value
				Subtotal	184,698,616.34	0.368				185,918,349.17	186,638,984.34	185,916,349.17
Operating Fund												
38145C752	10108	01OF	Goldman Sachs Illa Fed Port	Amort	169,810.83	0.006		100.000	04/30/2013	165,810.63	165,810.63	165,810.63
912828JW1	10237	01OF	U.S. Treasury	Fair	1,875,000.00	0.223	12/31/2013	100.930	04/30/2013	1,892,437.50	1,890,822.74	1,892,437.50
313381H24	10274	01OF	Federal Home Loan Bank	Fair	1,975,000.00	0.300	01/16/2015	100.094	04/30/2013	1,976,856.50	1,973,312.63	1,976,856.50
				Subtotal	4,015,810.63	0.252				4,036,104.63	4,030,046.90	4,035,104.63
Reserve Maintenance Fund												
38145C752	10108	01RMF	Goldman Sachs Illa Fed Port	Amort	90,516.30	0.006		100.000	04/30/2013	90,516.30	90,516.30	90,516.30
912828JW1	10238	01RMF	U.S. Treasury	Fair	935,000.00	0.223	12/31/2013	100.930	04/30/2013	943,685.50	942,940.14	943,685.50
313381H24	10275	01RMF	Federal Home Loan Bank	Fair	1,085,000.00	0.300	01/16/2015	100.094	04/30/2013	1,086,019.90	1,084,072.96	1,086,019.90
				Subtotal	2,110,516.30	0.253				2,120,231.70	2,117,528.40	2,120,231.70
Construction Fund 2005A												
38145C752	10112	05CF05	Goldman Sachs Illa Fed Port	Amort	2,621,604.49	0.006		100.000	04/30/2013	2,621,604.49	2,621,604.49	2,621,604.49
				Subtotal	2,621,604.49	0.008				2,621,604.49	2,621,604.49	2,621,604.49
Debt Service Reserve 2005A												
38145C752	10110	05DSRF05	Goldman Sachs Illa Fed Port	Amort	46,771.50	0.006		100.000	04/30/2013	46,771.50	46,771.50	46,771.50
912828JW1	10247	05DSRF05	U.S. Treasury	Fair	1,485,000.00	0.284	08/15/2014	100.684	04/30/2013	1,495,157.40	1,492,736.71	1,495,157.40
3135G0FY4	10211	05DSRF05	Federal National Mtg Assn	Fair	1,445,000.00	0.574	12/19/2014	100.878	04/30/2013	1,457,687.10	1,449,089.75	1,457,687.10
				Subtotal	2,975,771.50	0.421				2,999,616.00	2,988,597.96	2,988,616.00
Construction Fund 2007												
38145C752	10114	06CF07	Goldman Sachs Illa Fed Port	Amort	41,329,394.80	0.006		100.000	04/30/2013	41,329,394.80	41,329,394.80	41,329,394.80
3133XQU34	10258	06CF07	Federal Home Loan Bank	Fair	5,000,000.00	0.170	05/29/2013	100.275	04/30/2013	5,013,750.00	5,013,419.21	5,013,750.00
912828JW1	10259	06CF07	U.S. Treasury	Fair	10,000,000.00	0.172	05/31/2013	100.297	04/30/2013	10,029,700.00	10,027,360.52	10,029,700.00
085388TH8	10285	06CF07	BANK TOKYO MITSUBISHI	Fair	6,000,000.00	0.240	06/17/2013	99.918	04/30/2013	5,995,120.00	5,998,120.00	5,995,120.00
3133XXYX9	10202	06CF07	Federal Home Loan Bank	Fair	4,840,000.00	0.316	06/21/2013	100.250	04/30/2013	4,852,100.00	4,850,443.33	4,852,100.00
09233GUF1	10268	06CF07	TOYOTA Motor Credit CP	Fair	6,000,000.00	0.210	07/15/2013	99.812	04/30/2013	5,994,750.00	5,997,375.00	5,994,750.00
36959HVE4	10267	06CF07	General Elec Cap Corp	Fair	6,000,000.00	0.240	08/14/2013	99.880	04/30/2013	5,992,800.00	5,995,800.00	5,992,800.00
				Subtotal	78,169,394.80	0.107				79,207,614.80	79,211,912.66	79,207,614.80
Debt Service Reserve Fund 12A												
38145C752	10260	06DSRF12A	Goldman Sachs Illa Fed Port	Amort	17,841.98	0.006		100.000	04/30/2013	17,841.98	17,841.98	17,841.98
3135G0NV1	10264	06DSRF12A	Federal National Mtg Assn	Fair	2,845,000.00	0.368	09/28/2015	100.429	04/30/2013	2,857,205.05	2,853,969.51	2,857,205.05

Run Date: 05/03/2013 - 05:40

Portfolio DRJ
AP
IC (PRF_IC) 7.1.1
Report Ver. 7.3.2

Delaware River Joint TBC
Investment Classification
April 30, 2013

Page 3

CUSIP	Investment #	Fund	Issuer	Investment Class	Par Value	YTM	Maturity Date	Market Price	Market Date	Market Value	Book Value	Reported Value
				Subtotal	2,862,841.98	0.365				2,875,047.03	2,871,611.49	2,875,047.03
Debt Service Reserve Fund 07A												
38145C752	10111	06DSRF7A	Goldman Sachs Iia Fed Port	Amort	303,532.85	0.006		100.000	04/30/2013	303,532.85	303,532.85	303,532.85
912828QS2	10248	06DSRF7A	U.S. Treasury	Fair	5,750,000.00	0.284	08/15/2014	100.584	04/30/2013	5,789,330.00	5,779,956.94	5,789,330.00
3135G0FY4	10212	06DSRF7A	Federal National Mtg Assn	Fair	5,780,000.00	0.574	12/19/2014	100.878	04/30/2013	5,830,748.40	5,796,359.00	5,830,748.40
				Subtotal	11,833,632.85	0.418				11,923,611.25	11,879,848.79	11,923,611.25
				Total	251,696,377.25	0.284				263,206,468.43	262,867,804.59	263,206,468.43

DELAWARE RIVER JOINT TOLL BRIDGE COMMISSION
Meeting of May 20, 2013
TOLL TRAFFIC AND REVENUE STATISTICS (April, 2013)

Summary: The Commission experienced an increase in total toll revenue for April 2013 in comparison to April 2012. Total toll traffic however reflected a slight decrease for the month as the result of the decrease in automobile traffic.

Analysis of April 2013 / April 2012 toll revenue data comparison:

- An overall toll revenue increase of 5.21 percent was recorded at the Commission's seven toll bridges for the month.
- Commercial-vehicle toll revenue reflected a 7.87 percent increase.
- Passenger-vehicle toll revenue generated a 1.69 percent decrease.

Analysis of April 2013 / April 2012 traffic data comparison:

- Total toll traffic decreased by 9,607 vehicles, or 0.31 percent for the month.
- Commercial-vehicle traffic increased by 33,746 vehicles, or 8.37 percent.
- Passenger-vehicle toll traffic decreased by 43,353 vehicles, or 1.62 percent.
- Total recorded westbound traffic volume at the 11 vehicular toll supported bridges for April 2013 increased by 21,232 vehicles, or 0.81 percent as compared to April 2012.

Traffic analysis for 2013 YTD:

- Average daily toll traffic for the Commission's seven toll bridges for April 2013 was 102,588 total vehicles as compared to 102,908 total vehicles in April 2012.
- Recorded westbound traffic on the 11 toll supported bridges is reflecting a 2.19% decrease for the first four months of 2013 as compared to the same period in 2012.

District 1

Total toll traffic at Trenton-Morrisville (TM) for April 2013 reflected a 2.98 percent increase as the result of increases of 12,214 cars and 7,174 trucks when compared to April 2012. At New Hope-Lambertville (NHL), the increase of 4,583 cars and the decrease of 111 trucks generated an overall increase in total toll traffic of 2.85 percent for April 2013 as compared to April 2012.

District II

The I-78 Toll Bridge experienced a decrease of 5.33 percent in total toll traffic for the month of April 2013 compared to April 2012 as the result of the decrease of 59,863 cars and the increase of 12,148 trucks. At the Easton-Phillipsburg (EP) Toll Bridge, increases of 17,310 passenger vehicles and 6,573 trucks combined to generate a 5.33 percent increase in total toll traffic for April 2013.

District III

Portland-Columbia (PC) experienced a 9.08 percent decrease in total toll traffic during April 2013 as a result of decreases of 9,874 automobiles and 221 trucks compared to April 2012. At the Delaware Water Gap (DWG) Toll Bridge, the decrease of 6,773 passenger vehicles combined with the increase of 7,891 trucks to generate a 0.15 percent increase in total toll traffic for April 2013 as compared to April 2012. At Milford-Montague (MM), the decrease of 950 passenger vehicles and the increase of 292 trucks combined to produce an overall 0.69 percent decrease in total toll traffic for the month of April 2013.

E-ZPass Penetration Rates

The table below provides a comparison of the *E-ZPass* penetration rates for the Commission's seven (7) toll bridges for the months of April, 2013 and April, 2012, and the year-to-date periods ending April 30, 2013 and April 30, 2012.

		<i>E-ZPass</i> PENETRATION RATES					
		Apr-13	Apr-12	Change in Monthly Percentage	YTD 2013	YTD 2012	Change in YTD Percentage
All Toll Bridges	Cars	62.91	61.01	1.90	63.18	61.56	1.62
	Trucks	81.02	78.97	2.05	81.14	79.27	1.87
	Total	64.65	62.62	2.03	64.94	63.18	1.76
Trenton - Morrisville	Cars	60.28	58.66	1.62	60.35	58.80	1.55
	Trucks	88.31	86.60	1.71	88.07	86.32	1.75
	Total	62.31	60.43	1.88	62.30	60.54	1.76
New Hope - Lambertville	Cars	74.15	72.10	2.05	74.81	72.99	1.82
	Trucks	78.83	77.78	1.05	80.29	79.00	1.29
	Total	74.44	72.47	1.97	75.14	73.35	1.79
I-78	Cars	62.41	60.72	1.69	62.82	61.14	1.68
	Trucks	80.90	79.32	1.58	81.20	79.54	1.66
	Total	67.18	65.01	2.17	67.53	65.57	1.96
Easton - Phillipsburg	Cars	65.54	63.33	2.21	65.61	64.19	1.42
	Trucks	81.15	77.33	3.82	80.24	77.67	2.57
	Total	66.71	64.23	2.48	66.60	65.03	1.57
Portland - Columbia	Cars	56.64	55.74	0.90	57.25	56.25	1.00
	Trucks	81.28	80.69	0.59	81.06	79.85	1.21
	Total	58.41	57.41	1.00	58.73	57.73	1.00
Delaware Water Gap	Cars	59.16	57.50	1.66	60.00	58.31	1.69
	Trucks	78.49	75.99	2.50	78.52	76.60	1.92
	Total	62.19	60.20	1.99	62.84	61.04	1.80
Milford - Montague	Cars	56.63	55.61	1.02	57.12	55.91	1.21
	Trucks	72.40	69.31	3.09	78.19	72.53	5.66
	Total	57.11	55.99	1.12	57.69	56.36	1.33

DELAWARE RIVER JOINT TOLL BRIDGE COMMISSION

ALL TOLL BRIDGES

COMPARATIVE STATEMENT OF TOLL TRAFFIC AND REVENUE

APRIL, 2013

JANUARY 1, 2012 APRIL 30, 2012 121 DAYS		JANUARY 1, 2013 APRIL 30, 2013 120 DAYS		VEHICLE CLASS	MONTH OF APRIL 2013 30 DAYS		MONTH OF APRIL 2012 30 DAYS	
NUMBER OF VEHICLES	TOTAL REVENUE	NUMBER OF VEHICLES	TOTAL REVENUE		NUMBER OF VEHICLES	TOTAL REVENUE	NUMBER OF VEHICLES	TOTAL REVENUE
10,242,886	\$ 10,287,106.25	9,975,068	\$ 10,019,763.00	Passenger	2,640,626	\$ 2,656,363.50	2,683,979	\$ 2,698,882.00
-	(361,662.04)	-	(344,927.88)	Discounts *	-	(97,698.54)	-	(96,054.98)
10,242,886	\$ 9,925,444.21	9,975,068	\$ 9,674,835.12	TOTAL PASSENGER	2,640,626	\$ 2,558,664.96	2,683,979	\$ 2,602,827.02
252,970	1,632,329.40	264,224	1,704,397.70	2-Axis Trucks	70,385	454,136.15	64,793	418,124.85
110,095	1,303,338.15	118,404	1,402,152.80	3-Axis Trucks	34,548	408,906.00	29,523	348,474.80
95,691	1,481,284.80	108,126	1,687,426.80	4-Axis Trucks	30,700	479,524.80	24,807	383,827.20
1,080,068	21,180,047.50	1,088,332	21,543,312.00	5-Axis Trucks	291,767	5,724,002.00	276,727	5,429,880.00
28,315	858,440.80	34,860	808,853.60	6-Axis Trucks	8,702	202,401.60	6,931	181,321.80
2,460	88,481.60	3,733	103,210.40	7-Axis Trucks	915	25,386.80	889	19,258.60
6	289.00	12	681.58	Permits	1	64.08	2	108.80
1,569,604	\$ 25,344,201.25	1,627,491	\$ 27,248,034.88	TOTAL TRUCKS	437,016	\$ 7,294,421.43	403,272	\$ 6,761,896.85
11,812,490	\$ 36,269,645.46	11,602,559	\$ 38,922,870.10	TOTAL TOLL VEHICLES	3,077,644	9,853,186.39	3,087,251	9,384,823.87
97,624	\$ 295,749.14	96,688	\$ 307,890.58	DAILY AVERAGE	102,588	\$ 328,439.55	102,908	\$ 312,180.80
Rate Change				Rate Change				
Traffic (toll)				Traffic (toll)				-0.31%
Autos				Autos				-1.82%
Trucks				Trucks				8.97%
Revenue				Revenue				5.21%
Autos				Autos				-1.89%
Trucks				Trucks				7.87%

* Discounts represents rebates for commuter discounts earned when a customer crosses the Commission's bridges 20 times in a 35 day period as well as discounts for employee's and Commission vehicle's non-revenue crossings.

NOTE: It is noted that since 2012 was a leap year, the year-to-date totals for 2012 reflect activity for 121 days as compared to 120 days for 2013.

DELAWARE RIVER JOINT TOLL BRIDGE COMMISSION
TRENTON - MORRISVILLE TOLL BRIDGE
COMPARATIVE STATEMENT OF TOLL TRAFFIC AND REVENUE

APRIL, 2013

JANUARY 1, 2012 APRIL 30, 2012 121 DAYS		JANUARY 1, 2013 APRIL 30, 2013 120 DAYS		MONTH OF APRIL 2013 30 DAYS		MONTH OF APRIL 2012 30 DAYS		
NUMBER OF VEHICLES	TOTAL REVENUE	NUMBER OF VEHICLES	TOTAL REVENUE	VEHICLE CLASS	NUMBER OF VEHICLES	TOTAL REVENUE	NUMBER OF VEHICLES	TOTAL REVENUE
2,376,581	\$ 2,382,142.25 (76,751.89)	2,355,375	\$ 2,381,021.25 (87,887.93)	Passenger Discounts *	622,432	\$ 624,428.50 (19,180.90)	610,218	\$ 611,988.00 (20,385.93)
2,376,581	\$ 2,305,390.28	2,355,375	\$ 2,293,133.32	TOTAL PASSENGER	622,432	\$ 605,247.60	610,218	\$ 591,632.07
66,098	420,684.40	57,914	439,085.75	2-Axis Trucks	17,799	115,069.50	16,304	105,388.40
16,314	230,400.15	28,056	311,066.40	3-Axis Trucks	7,880	94,125.60	4,902	58,460.40
17,294	271,810.40	23,071	384,028.60	4-Axis Trucks	5,227	98,415.00	4,489	70,812.80
58,925	1,159,379.00	60,367	1,184,398.00	5-Axis Trucks	16,488	323,596.00	15,569	306,306.00
459	10,802.40	533	12,578.00	6-Axis Trucks	162	3,832.80	119	2,812.80
9	256.00	8	228.00	7-Axis Trucks Permits	4	112.00	3	84.00
161,099	\$ 2,030,411.35	177,949	\$ 2,311,382.95	TOTAL TRUCKS	48,560	\$ 635,151.90	41,386	\$ 543,694.40
2,537,680	\$ 4,399,801.61	2,533,324	\$ 4,604,516.27	TOTAL TOLL VEHICLES	670,992	\$ 1,240,399.50	651,604	\$ 1,135,326.47
20,973	\$ 36,353.73	21,111	\$ 38,370.97	DAILY AVERAGE	22,366	\$ 41,346.65	21,720	\$ 37,844.22
Rate Change					Rate Change			
Traffic (toll)		-0.17%			Traffic (toll)		2.98%	
Autos		-0.89%			Autos		2.00%	
Trucks		10.48%			Trucks		17.33%	
Revenue		4.68%			Revenue		8.25%	
Autos		-0.53%			Autos		2.30%	
Trucks		10.41%			Trucks		16.82%	

* Discounts represents rebates for commuter discounts earned when a customer crosses the Commission's bridges 20 times in a 35 day period as well as discounts for employee's and Commission vehicle's non-revenue crossings.

DELAWARE RIVER JOINT TOLL BRIDGE COMMISSION

NEW HOPE - LAMBERTVILLE TOLL BRIDGE

COMPARATIVE STATEMENT OF TOLL TRAFFIC AND REVENUE

APRIL, 2013

JANUARY 1, 2012 APRIL 30, 2012 121 DAYS			JANUARY 1, 2013 APRIL 30, 2013 120 DAYS			MONTH OF APRIL 2013 30 DAYS			MONTH OF APRIL 2012 30 DAYS			
NUMBER OF VEHICLES	TOTAL REVENUE		NUMBER OF VEHICLES	TOTAL REVENUE		VEHICLE CLASS	NUMBER OF VEHICLES	TOTAL REVENUE		NUMBER OF VEHICLES	TOTAL REVENUE	
552,282	\$	554,881.25 (25,828.39)	548,401	\$	551,120.50 (24,910.61)	Passenger Discounts *	151,048	\$	152,004.00 (6,112.44)	145,465	\$	147,405.00 (6,810.03)
552,282	\$	529,232.86	548,401	\$	527,109.89	TOTAL PASSENGER	151,048	\$	145,891.56	146,485	\$	140,794.97
17,220		111,469.15	18,020		116,591.80	2-Axis Trucks	5,158		33,400.25	4,991		31,862.15
6,341		75,567.60	5,426		84,710.00	3-Axis Trucks	1,568		18,586.40	1,994		23,796.00
2,625		40,784.00	2,558		39,734.40	4-Axis Trucks	763		11,881.60	669		10,424.00
8,983		177,172.00	8,999		176,986.00	5-Axis Trucks	2,575		50,722.00	2,613		51,506.00
153		3,874.40	170		4,065.60	6-Axis Trucks	49		1,173.60	51		1,217.60
18		524.00	12		346.40	7-Axis Trucks	-		-	6		188.00
			-			Permits	-					
35,351	\$	409,391.15	35,185	\$	402,444.20	TOTAL TRUCKS	10,113	\$	115,883.85	10,224	\$	118,779.75
587,633	\$	938,624.01	583,586	\$	929,554.09	TOTAL TOLL VEHICLES	161,161	\$	261,755.41	156,689	\$	259,588.72
4,858	\$	7,757.22	4,863	\$	7,748.28	DAILY	5,372	\$	8,725.18	5,223	\$	8,652.29
Rate Change												
Traffic (toll)		-0.89%								Rate Change		
Autos		-0.70%								Traffic (toll)		2.85%
Trucks		-0.47%								Autos		3.13%
Revenue		-0.97%								Trucks		-1.09%
Autos		-0.40%								Revenue		0.84%
Trucks		-1.70%								Autos		3.62%
										Trucks		-2.45%

* Discounts represents rebates for commuter discounts earned when a customer crosses the Commission's bridges 20 times in a 35 day period as well as discounts for employee's and Commission vehicle's non-revenue crossings.

DELAWARE RIVER JOINT TOLL BRIDGE COMMISSION
178 TOLL BRIDGE
COMPARATIVE STATEMENT OF TOLL TRAFFIC AND REVENUE

APRIL, 2013

JANUARY 1, 2012 APRIL 30, 2012 121 DAYS			JANUARY 1, 2013 APRIL 30, 2013 120 DAYS			MONTH OF APRIL 2013 30 DAYS			MONTH OF APRIL 2012 30 DAYS			
NUMBER OF VEHICLES		TOTAL REVENUE	NUMBER OF VEHICLES		TOTAL REVENUE	VEHICLE CLASS	NUMBER OF VEHICLES		TOTAL REVENUE	NUMBER OF VEHICLES		TOTAL REVENUE
2,559,042		\$ 2,575,385.00 (88,081.88)	2,439,252		\$ 2,456,105.25 (95,265.68)	Passenger Discounts *	529,490		\$ 634,998.00 (28,588.18)	689,353		\$ 894,401.50 (23,519.21)
2,559,042		\$ 2,487,303.12	2,439,252		\$ 2,360,839.57	TOTAL PASSENGER	628,490		\$ 606,400.82	689,353		\$ 670,882.29
72,577		467,202.45	74,512		479,725.60	2-Axle Trucks	19,384		124,779.20	18,504		119,113.15
37,777		446,452.00	43,629		513,981.60	3-Axle Trucks	12,240		143,797.60	9,973		117,607.20
42,805		663,436.80	46,415		718,982.40	4-Axle Trucks	12,899		199,865.60	10,514		163,128.00
638,152		12,506,933.00	650,561		12,752,150.00	5-Axle Trucks	168,194		3,297,802.00	162,607		3,187,800.00
18,025		417,487.20	22,277		517,358.40	6-Axle Trucks	5,275		122,361.60	4,409		102,141.60
1,943		53,714.80	3,078		84,442.40	7-Axle Trucks	709		19,550.80	544		15,137.60
3		156.80	1		-	Permits			-	2		108.80
811,282		\$ 14,554,383.05	840,473		\$ 15,066,640.40	TOTAL TRUCKS	218,701		\$ 3,908,146.80	208,553		\$ 3,705,036.35
3,370,324		\$ 17,041,686.17	3,279,725		\$ 17,427,479.97	TOTAL TOLL VEHICLES	848,191		\$ 4,514,547.62	695,906		\$ 4,375,918.64
27,854		\$ 140,640.38	27,331		\$ 145,229.00	DAILY AVERAGE	28,273		\$ 150,484.92	29,864		\$ 145,863.95
Rate Change						Rate Change						
Traffic (toll)						Traffic (toll)						
Autos						Autos						
Trucks						Trucks						
Revenue						Revenue						
Autos						Autos						
Trucks						Trucks						

* Discounts represents rebates for commuter discounts earned when a customer crosses the Commission's bridges 20 times in a 35 day period as well as discounts for employee's and Commission vehicle's non-revenue crossings.

DELAWARE RIVER JOINT TOLL BRIDGE COMMISSION
EASTON - PHILLIPSBURG TOLL BRIDGE
COMPARATIVE STATEMENT OF TOLL TRAFFIC AND REVENUE

APRIL, 2013

JANUARY 1, 2012 APRIL 30, 2012 121 DAYS		JANUARY 1, 2013 APRIL 30, 2013 120 DAYS		VEHICLE CLASS	MONTH OF APRIL 2013 30 DAYS		MONTH OF APRIL 2012 30 DAYS	
NUMBER OF VEHICLES	TOTAL REVENUE	NUMBER OF VEHICLES	TOTAL REVENUE		NUMBER OF VEHICLES	TOTAL REVENUE	NUMBER OF VEHICLES	TOTAL REVENUE
1,648,899	\$ 1,653,962.50 (81,191.60)	1,612,566	\$ 1,617,517.75 (50,838.02)	Passenger Discounts *	436,734	\$ 438,734.75 (13,664.67)	419,424	\$ 421,342.75 (18,177.16)
1,648,899	\$ 1,582,770.90	1,612,566	\$ 1,566,679.73	TOTAL PASSENGER	436,734	\$ 425,069.88	419,424	\$ 405,165.59
43,800	283,158.60	45,003	290,634.10	2-Axle Trucks	12,587	81,338.40	11,181	72,289.76
13,135	155,532.00	13,343	157,975.20	3-Axle Trucks	4,070	48,258.90	3,361	39,734.40
9,942	156,384.00	11,380	179,424.00	4-Axle Trucks	3,542	55,806.00	2,663	41,822.40
42,694	839,684.75	47,053	922,692.00	5-Axle Trucks	14,868	291,574.00	11,410	224,400.00
518	12,218.40	612	14,208.00	6-Axle Trucks	225	5,169.60	118	2,750.40
10	288.00	16	453.20	7-Axle Trucks	8	224.00	4	112.00
		-		Permits	-			
110,102	\$ 1,447,285.75	117,407	\$ 1,565,388.50	TOTAL TRUCKS	35,308	\$ 482,370.80	28,735	\$ 381,108.95
1,759,001	\$ 3,040,058.66	1,729,973	\$ 3,132,066.23	TOTAL TOLL VEHICLES	472,042	\$ 907,440.68	448,159	\$ 786,274.54
14,537	\$ 25,124.44	14,416	\$ 26,100.55	DAILY AVERAGE	15,735	\$ 30,248.02	14,939	\$ 26,209.15
Rate Change:				Rate Change:				
Traffic (toll)				Traffic (toll)				
Autos				Autos				5.33%
Trucks				Trucks				4.13%
Revenue				Revenue				22.87%
Autos				Autos				15.41%
Trucks				Trucks				4.81%
								26.67%

* Discounts represents rebates for commuter discounts earned when a customer crosses the Commission's bridges 20 times in a 35 day period as well as discounts for employee's and Commission vehicle's non-revenue crossings.

DELAWARE RIVER JOINT TOLL BRIDGE COMMISSION
 PORTLAND - COLUMBIA TOLL BRIDGE
 COMPARATIVE STATEMENT OF TOLL TRAFFIC AND REVENUE
 APRIL, 2013

JANUARY 1, 2012 APRIL 30, 2012 121 DAYS		JANUARY 1, 2013 APRIL 30, 2013 120 DAYS		VEHICLE CLASS	MONTH OF APRIL 2013 30 DAYS		MONTH OF APRIL 2012 30 DAYS	
NUMBER OF VEHICLES	TOTAL REVENUE	NUMBER OF VEHICLES	TOTAL REVENUE		NUMBER OF VEHICLES	TOTAL REVENUE	NUMBER OF VEHICLES	TOTAL REVENUE
385,281	\$ 387,409.50 (18,004.22)	348,326	\$ 350,141.75 (16,593.42)	Passenger Discounts *	93,818	\$ 94,517.75 (4,183.03)	103,692	\$ 104,454.50 (4,124.92)
385,281	\$ 371,405.28	348,326	\$ 333,548.33	TOTAL PASSENGER	93,818	\$ 90,334.72	103,692	\$ 100,338.58
8,332	54,017.80	8,222	53,233.70	2-Axle Trucks	2,335	15,144.35	2,215	14,360.45
4,628	55,255.20	3,023	36,061.20	3-Axle Trucks	1,001	11,943.60	1,382	15,525.20
3,071	49,022.40	3,315	52,961.60	4-Axle Trucks	1,272	20,334.40	846	15,104.00
8,454	187,774.00	8,409	167,002.00	5-Axle Trucks	2,623	52,082.00	2,892	57,456.00
213	5,102.40	121	2,896.80	6-Axle Trucks	25	600.00	42	1,005.60
		-	-	7-Axle Trucks	-	-		
				Permits				
25,698	\$ 351,171.60	23,090	\$ 312,155.30	TOTAL TRUCKS	7,256	\$ 100,104.35	7,477	\$ 104,451.25
410,979	\$ 722,578.88	371,416	\$ 645,703.63	TOTAL TOLL VEHICLES	101,074	\$ 190,439.07	111,169	\$ 204,790.83
3,397	\$ 5,971.71	3,095	\$ 5,380.85	DAILY AVERAGE	3,369	\$ 6,347.97	3,706	\$ 6,826.36
Rate Change					Rate Change			
Traffic (toll)					Traffic (toll)			
Autos					Autos			
Trucks					Trucks			
Revenue					Revenue			
Autos					Autos			
Trucks					Trucks			

* Discounts represents rebates for commuter discounts earned when a customer crosses the Commission's bridges 20 times in a 35 day period as well as discounts for employee's and Commission vehicle's non-revenue crossings.

DELAWARE RIVER JOINT TOLL BRIDGE COMMISSION
DELAWARE WATER GAP TOLL BRIDGE
COMPARATIVE STATEMENT OF TOLL TRAFFIC AND REVENUE

APRIL, 2013

JANUARY 1, 2012 APRIL 30, 2012 121 DAYS		JANUARY 1, 2013 APRIL 30, 2013 120 DAYS		VEHICLE CLASS	MONTH OF APRIL 2013 30 DAYS		MONTH OF APRIL 2012 30 DAYS	
NUMBER OF VEHICLES	TOTAL REVENUE	NUMBER OF VEHICLES	TOTAL REVENUE		NUMBER OF VEHICLES	TOTAL REVENUE	NUMBER OF VEHICLES	TOTAL REVENUE
2,373,230	\$ 2,383,676.75	2,335,425	\$ 2,346,350.50	Passenger	614,972	\$ 618,777.50	621,745	\$ 625,339.25
	(79,335.16)	-	(75,975.28)	Discounts *	-	(21,930.42)	-	(21,368.07)
2,373,230	\$ 2,304,341.59	2,335,425	\$ 2,270,375.22	TOTAL PASSENGER	614,972	\$ 596,847.08	621,745	\$ 603,971.18
40,084	257,888.15	44,427	285,636.65	2-Axle Trucks	11,405	73,372.00	10,212	65,682.50
28,028	330,703.20	26,214	309,831.20	3-Axle Trucks	7,467	88,249.20	7,626	89,923.20
19,386	300,822.40	20,848	323,876.40	4-Axle Trucks	5,790	89,984.00	5,141	79,819.20
319,584	8,274,003.75	320,910	8,299,700.00	5-Axle Trucks	86,363	1,695,160.00	80,988	1,589,528.00
8,920	208,560.00	10,933	255,417.60	6-Axle Trucks	2,960	69,120.00	2,191	51,324.00
477	13,630.40	815	17,644.40	7-Axle Trucks	192	5,444.00	131	3,732.80
2	512.20	11	681.68	Permits	1	64.08	-	-
416,481	\$ 7,385,720.10	423,959	\$ 7,492,787.93	TOTAL TRUCKS	114,178	\$ 2,021,393.28	106,287	\$ 1,880,909.70
2,789,711	\$ 8,690,061.69	2,759,384	\$ 8,783,163.15	TOTAL TOLL VEHICLES	729,150	\$ 2,618,240.36	728,032	\$ 2,483,980.88
23,055	\$ 80,083.15	22,995	\$ 81,359.69	DAILY AVERAGE	24,305	\$ 87,274.68	24,268	\$ 82,799.36
Rate Change				Rate Change				
Traffic (toll)				Traffic (toll)				0.15%
Autos				Autos				-1.09%
Trucks				Trucks				7.42%
Revenue				Revenue				5.41%
Autos				Autos				-1.18%
Trucks				Trucks				7.52%

* Discounts represents rebates for commuter discounts earned when a customer crosses the Commission's bridges 20 times in a 35 day period as well as discounts for employee's and Commission vehicle's non-revenue crossings.

DELAWARE RIVER JOINT TOLL BRIDGE COMMISSION
MILFORD - MONTAGUE TOLL BRIDGE
COMPARATIVE STATEMENT OF TOLL TRAFFIC AND REVENUE

APRIL, 2013

JANUARY 1, 2012 APRIL 30, 2012 121 DAYS		JANUARY 1, 2013 APRIL 30, 2013 120 DAYS		VEHICLE CLASS	MONTH OF APRIL 2013 30 DAYS		MONTH OF APRIL 2012 30 DAYS	
NUMBER OF VEHICLES	TOTAL REVENUE	NUMBER OF VEHICLES	TOTAL REVENUE		NUMBER OF VEHICLES	TOTAL REVENUE	NUMBER OF VEHICLES	TOTAL REVENUE
347,571	\$ 349,669.00 (14,668.80)	335,723	\$ 337,508.00 (14,368.94)	Passenger Discounts *	92,132	\$ 92,902.00 (3,928.70)	93,082	\$ 93,931.00 (3,889.66)
347,571	\$ 335,000.20	335,723	\$ 323,149.06	TOTAL PASSENGER	92,132	\$ 88,973.30	93,082	\$ 90,041.34
5,858	37,919.05	5,126	39,490.10	2-Axle Trucks	1,707	11,032.45	1,486	9,628.45
672	10,428.00	713	8,527.20	3-Axle Trucks	322	3,656.80	285	3,398.40
567	6,324.80	539	8,419.20	4-Axle Trucks	207	3,235.20	185	2,916.80
2,276	45,092.00	2,053	40,374.00	5-Axle Trucks	658	13,066.00	650	12,884.00
17	396.00	14	331.20	6-Axle Trucks	8	144.00	3	69.60
3	76.40	3	96.00	7-Axle Trucks	2	56.00	1	25.20
				Permits	-	-		
9,591	\$ 102,836.25	9,428	\$ 97,237.70	TOTAL TRUCKS	2,902	\$ 31,390.45	2,610	\$ 28,922.45
357,162	\$ 437,638.45	345,151	\$ 420,366.76	TOTAL TOLL VEHICLES	95,034	\$ 120,363.75	95,692	\$ 118,963.79
2,952	\$ 3,618.50	2,876	\$ 3,503.22	DAILY AVERAGE	3,168	\$ 4,012.13	3,190	\$ 3,965.48
Rate Change							Rate Change	
Traffic (toll)	-3.36%						Traffic (toll)	-0.69%
Autos	-3.41%						Autos	-1.02%
Trucks	-1.70%						Trucks	11.18%
Revenue	-3.99%						Revenue	1.16%
Autos	-3.54%						Autos	-1.19%
Trucks	-5.45%						Trucks	8.53%

* Discounts represents rebates for commuter discounts earned when a customer crosses the Commission's bridges 20 times in a 35 day period as well as discounts for employee's and Commission vehicle's non-revenue crossings.

Delaware River Joint Toll Bridge Commission **Toll Supported Bridge - Westbound Traffic Counts**

April 2013

Bridge	Westbound Volume					
	April 2013	April 2012	% Change	YTD 2013	YTD 2012	% Change
Lower Trenton	385,964	380,035	1.56%	1,463,247	1,501,983	-2.58%
Calhoun Street	266,060	260,413	2.17%	1,013,582	1,008,136	0.54%
Scudder Falls	948,934	948,063	0.09%	3,570,346	3,674,403	-2.83%
Washington Crossing ¹	133,649	125,585	6.42%	509,282	475,405	7.13%
New Hope - Lambertville	201,345	201,732	-0.19%	743,602	762,708	-2.51%
Centre Bridge - Stockton	67,864	67,443	0.62%	236,318	248,346	-4.84%
Uhlerstown - Frenchtown	62,922	61,164	2.87%	226,403	234,210	-3.33%
Upper Black Eddy - Milford	48,920	54,460	-10.17%	177,633	202,783	-12.40%
Riegelsville	65,231	61,485	6.09%	235,796	231,201	1.99%
Northampton Street	399,837	403,006	-0.79%	1,515,022	1,577,028	-3.93%
Riverton - Belvidere	73,194	69,302	5.62%	266,322	264,535	0.68%
Total	2,653,920	2,632,688	0.81%	9,957,552	10,180,738	-2.19%

NOTES:

(1) Counter down 4-12-13 to 4-30-13. April 2012 data interpolated.

Delaware River Joint Toll Bridge Commission
Toll Supported Bridge - Two Way Traffic Counts
April 2013

Bridge	Total Volume					
	April 2013	April 2012	% Change	YTD 2013	YTD 2012	% Change
Lower Trenton	502,554	495,441	1.44%	1,898,015	1,953,404	-2.84%
Calhoun Street	524,620	508,970	3.07%	1,989,724	1,976,205	0.68%
Scudder Falls	1,800,434	1,813,583	-0.73%	6,765,454	7,005,791	-3.43%
Washington Crossing ¹	228,209	219,137	4.14%	850,424	825,142	3.06%
New Hope - Lambertville	428,626	429,274	-0.15%	1,596,887	1,636,148	-2.40%
Centre Bridge - Stockton	147,236	146,949	0.20%	515,562	540,198	-4.56%
Uhlerstown - Frenchtown	125,910	121,262	3.83%	452,362	465,279	-2.78%
Upper Black Eddy-Milford	99,358	109,151	-8.97%	358,985	404,958	-11.35%
Riegelsville	108,449	102,018	6.30%	392,474	385,769	1.74%
Northampton Street	624,219	632,293	-1.28%	2,351,605	2,468,113	-4.72%
Riverton - Belvidere	136,711	133,459	2.44%	494,639	513,370	-3.65%
Total	4,726,326	4,711,537	0.31%	17,666,131	18,174,377	-2.80%

NOTES:

(1) Counter down 4-12-13 to 4-30-13. April 2012 data interpolated.

Delaware River Joint Toll Bridge Commission
Toll Bridge - Two Way Traffic Counts
April 2013

Bridge	Total Volume (all classes)					
	April 2013	April 2012	% Change	YTD 2013	YTD 2012	% Change
Trenton - Morrisville	1,697,544	1,639,436	3.54%	6,417,373	6,410,842	0.10%
New Hope - Lambertville	322,334	310,987	3.65%	1,161,212	1,168,637	-0.64%
Interstate 78 ¹	1,768,241	1,861,717	-5.02%	6,771,836	6,943,510	-2.47%
Easton - Phillipsburg	1,128,693	1,060,214	6.46%	4,116,388	4,175,313	-1.41%
Portland - Columbia	211,026	227,203	-7.12%	773,414	849,850	-8.99%
Delaware Water Gap	1,458,086	1,471,202	-0.89%	5,517,250	5,530,808	-0.25%
Milford - Montague	176,197	174,715	0.85%	639,311	656,700	-2.65%
Total	6,762,121	6,745,474	0.25%	25,396,783	25,735,660	-1.32%

NOTES:

(1) Counter down 4-1-13 to 4-30-13 due to paving contract T506A. April 2012 data interpolated and decreased by 5%.

DELAWARE RIVER JOINT TOLL BRIDGE COMMISSION

Meeting of May 20, 2013

STATISTICAL SUMMARY OF EXPENDITURES

This includes reports entitled "**Budget vs Actual**" covering the month of April 2013 and the four month year-to-date operations of fiscal year 2013 relative to Toll Bridges, Toll Supported Bridges and Administration departments.

Total expense plus encumbrance totaled \$4,245,902 for the month of April. For the 2013 fiscal year-to-date period, total expense plus encumbrances amounted to \$15,134,894 or 91.0% of the year-to-date budget. All of the expense line items are well within their line item budget.

During the month of April, there was a larger dollar amount than usual of Encumbrances (Purchase Orders) posted to the financials. This was due to the final approval of the operating budget in March 2013. Normally, most of the annual encumbrances are posted to the financials in January and February of each year.

Delaware River Joint Toll Bridge Commission
Budget vs Actual
For the Four Months Ending April 30, 2013

TOTAL COMMISSION

	Budget 2013	Expended For The Month	Expended Year To Date	Encumbered	Budget Remaining Balance
Regular Employees Salaries	\$17,464,068	\$1,351,644	\$5,318,180	\$0	\$12,145,888
Temporary/Summer Salaries	524,195	33,389	136,029	0	388,167
Overtime Wages	339,437	13,006	120,070	0	219,367
Pension Contributions	2,392,058	144,295	587,556	0	1,804,502
Social Security Contributions	1,479,259	111,747	446,004	0	1,033,255
Health Care Benefits	7,713,106	684,616	2,515,443	0	5,197,663
Life Insurance	117,826	9,702	38,793	0	79,034
Unemployment Compensation	45,000	5,397	12,902	0	32,098
Utility Expense	925,841	84,481	324,843	108,393	492,604
Office Expense	258,621	17,628	58,477	40,018	160,126
Communication	648,570	39,261	170,448	21,453	456,669
Information Technology	418,100	29,633	118,156	11,384	288,561
Education Training	156,690	5,535	41,047	0	115,643
Vehicle Maint. & Equipment	384,244	27,295	119,708	158,900	105,637
Operations Maintenance	2,318,791	130,854	520,952	426,140	1,371,699
Commission	22,500	907	4,116	0	18,384
Toll Collection	65,300	6,046	14,586	3,561	47,152
Uniform Expense	65,900	3,028	10,908	1,034	53,958
Business Insurance	2,885,859	221,601	879,103	0	2,006,756
Licenses & Inspections	5,120	130	1,215	0	3,905
Advertising	50,500	675	2,400	1,000	47,100
Professional Services	1,183,950	23,492	178,746	17,438	987,766
State Police Bridge Security	4,525,601	341,321	1,329,117	0	3,196,485
EZPass Equipment/Maintenance	1,073,820	78,367	291,616	0	782,205
General Contingency	300,000	5,520	6,239	1,319	292,442
EZPass Operating Expense	3,787,737	207,614	1,097,602	0	2,690,135
Total	\$49,152,094	\$3,577,184	\$14,344,254	\$790,640	\$34,017,200

Delaware River Joint Toll Bridge Commission
Budget vs Actual
For the Four Months Ending April 30, 2013

ADMINISTRATION*

	Budget 2013	Expended For The Month	Expended Year To Date	Encumbered	Budget Remaining Balance
Regular Employees Salaries	\$3,163,040	\$237,539	\$938,486	\$0	\$2,224,554
Temporary/Summer Salaries	8,196	0	0	0	8,196
Overtime Wages	1,200	18	126	0	1,074
Pension Contributions	400,709	20,317	82,897	0	317,811
Social Security Contributions	243,610	18,092	71,517	0	172,092
Health Care Benefits	986,769	83,482	298,083	0	688,686
Life Insurance	19,754	1,577	6,245	0	13,509
Unemployment Compensation	45,000	5,397	12,902	0	32,098
Office Expense	205,600	14,677	49,108	28,786	127,705
Communication	160,396	15,494	47,379	0	113,017
Information Technology	390,000	29,633	118,156	11,384	260,461
Education Training	115,420	3,426	34,300	0	81,120
Vehicle Maint. & Equipment	2,824	0	0	0	2,824
Commission	22,500	907	4,116	0	18,384
Business Insurance	257,885	8,785	34,906	0	222,980
Advertising	50,500	675	2,400	1,000	47,100
Professional Services	948,950	23,492	178,296	0	770,654
General Contingency	300,000	5,520	6,239	1,319	292,442
TOTAL	\$7,322,353	\$469,029	\$1,885,156	\$42,489	\$5,394,708

* Includes Executive, Human Resources, Accounting, EZPass, Purchasing, Information Technology, and Community Affairs.

Delaware River Joint Toll Bridge Commission
Budget vs Actual
For the Four Months Ending April 30, 2013

ADMINISTRATION - OPERATIONS*

	Budget 2013	Expended For The Month	Expended Year To Date	Encumbered	Budget Remaining Balance
Regular Employees Salaries	\$958,241	\$60,483	\$236,962	\$0	\$721,279
Overtime Wages	9,000	4	2,161	0	6,839
Pension Contributions	235,555	13,636	55,533	0	180,022
Social Security Contributions	141,911	10,123	40,691	0	101,219
Health Care Benefits	495,937	44,075	165,092	0	330,845
Life Insurance	11,388	934	3,782	0	7,605
Office Expense	17,250	107	379	0	16,871
Communication	85,554	4,657	20,816	908	63,830
Education Training	28,550	1,445	3,613	0	24,937
Vehicle Maint. & Equipment	7,440	6	126	0	7,314
Operations Maintenance	1,300,000	90,562	355,460	79,950	864,590
Uniform Expense	3,000	0	180	0	2,820
Business Insurance	50,846	4,022	16,075	0	34,771
Professional Services	235,000	0	451	17,438	217,112
TOTAL	\$3,579,672	\$230,054	\$901,321	\$98,295	\$2,580,056

* Includes Engineering, Security, Safety & Training, Plant & Facility, and Electronic Security & Surveillance.

Delaware River Joint Toll Bridge Commission
Budget vs Actual
For the Four Months Ending April 30, 2013

TRENTON - MORRISVILLE TOLL BRIDGE

	Budget 2013	Expended For The Month	Expended Year To Date	Encumbered	Budget Remaining Balance
Regular Employees Salaries	\$1,482,695	\$136,338	\$481,598	\$0	\$1,001,097
Temporary/Summer Salaries	86,993	4,326	22,237	0	64,756
Overtime Wages	30,000	892	9,636	0	20,364
Pension Contributions	194,934	12,871	52,194	0	142,740
Social Security Contributions	123,524	10,750	39,373	0	84,151
Health Care Benefits	726,561	65,395	244,578	0	481,983
Life Insurance	9,093	895	3,598	0	5,495
Utility Expense	154,950	23,825	57,390	27,995	69,565
Office Expense	5,650	129	435	816	4,399
Communication	64,044	3,847	18,849	9,192	36,003
Information Technology	7,400	0	0	0	7,400
Education Training	1,500	102	1,402	0	98
Vehicle Maint. & Equipment	67,080	3,080	22,397	26,187	18,496
Operations Maintenance	148,995	3,127	22,442	43,806	82,748
Toll Collection	13,000	949	3,466	882	8,652
Uniform Expense	11,400	198	271	0	11,129
Business Insurance	272,319	22,141	88,580	0	183,740
Licenses & Inspections	480	0	195	0	285
State Police Bridge Security	624,534	47,102	183,418	0	441,116
EZPass Equipment/Maintenance	157,915	15,854	47,090	0	110,825
EZPass Operating Expense	766,259	42,021	222,134	0	544,125
TOTAL	\$4,949,326	\$393,843	\$1,521,283	\$108,878	\$3,319,164

**Delaware River Joint Toll Bridge Commission
Budget vs Actual
For the Four Months Ending April 30, 2013**

NEW HOPE - LAMBERTVILLE TOLL BRIDGE

	Budget 2013	Expended For The Month	Expended Year To Date	Encumbered	Budget Remaining Balance
Regular Employees Salaries	\$1,006,131	\$88,292	\$327,002	\$0	\$679,129
Temporary/Summer Salaries	36,296	2,086	8,762	0	27,534
Overtime Wages	24,800	1,090	10,911	0	13,889
Pension Contributions	131,547	8,643	34,793	0	96,754
Social Security Contributions	81,643	6,969	25,703	0	55,940
Health Care Benefits	453,990	42,122	156,879	0	297,111
Life Insurance	6,172	552	2,209	0	3,963
Utility Expense	151,990	20,519	62,579	15,762	73,649
Office Expense	1,500	102	346	816	138
Communication	51,992	2,548	14,547	0	37,445
Information Technology	7,900	0	0	0	7,900
Education Training	1,120	0	0	0	1,120
Vehicle Maint. & Equipment	66,760	1,263	15,873	38,300	12,587
Operations Maintenance	140,800	6,509	34,710	34,011	72,079
Toll Collection	6,200	1,191	2,688	294	3,217
Uniform Expense	3,000	215	1,055	0	1,945
Business Insurance	209,563	16,939	66,952	0	142,611
Licenses & Inspections	240	65	130	0	110
State Police Bridge Security	123,096	9,284	36,152	0	86,944
EZPass Equipment/Maintenance	126,332	4,537	29,611	0	96,721
EZPass Operating Expense	219,310	12,042	63,641	0	155,669
TOTAL	\$2,850,381	\$224,967	\$894,744	\$89,183	\$1,866,454

Delaware River Joint Toll Bridge Commission
Budget vs Actual
For the Four Months Ending April 30, 2013

INTERSTATE - 78 TOLL BRIDGE

	Budget 2013	Expended For The Month	Expended Year To Date	Encumbered	Budget Remaining Balance
Regular Employees Salaries	\$2,167,956	\$159,322	\$669,740	\$0	\$1,498,216
Temporary/Summer Salaries	96,400	6,100	23,955	0	70,445
Overtime Wages	49,000	3,577	19,360	0	29,640
Pension Contributions	284,798	17,344	71,325	0	213,473
Social Security Contributions	178,119	12,809	54,145	0	123,974
Health Care Benefits	1,028,436	89,958	326,682	0	701,754
Life Insurance	13,216	1,157	4,624	0	8,591
Utility Expense	136,000	5,924	42,922	31,859	61,219
Office Expense	8,950	392	1,735	2,359	4,856
Communication	55,500	2,143	13,442	0	42,058
Information Technology	4,000	0	0	0	4,000
Education Training	2,000	0	90	0	1,910
Vehicle Maint. & Equipment	72,380	4,659	21,255	38,665	12,460
Operations Maintenance	185,722	501	14,877	98,801	72,045
Toll Collection	12,000	1,307	3,041	644	8,315
Uniform Expense	7,000	125	712	0	6,288
Business Insurance	482,903	39,482	155,594	0	327,308
Licenses & Inspections	1,000	0	65	0	935
State Police Bridge Security	747,629	56,386	219,570	0	528,059
EZPass Equipment/Maintenance	221,081	23,612	67,764	0	153,316
EZPass Operating Expense	1,141,245	62,596	330,886	0	810,359
TOTAL	\$6,895,334	\$487,394	\$2,043,785	\$172,328	\$4,679,221

Delaware River Joint Toll Bridge Commission
Budget vs Actual
For the Four Months Ending April 30, 2013

EASTON - PHILLIPSBURG TOLL BRIDGE

	Budget 2013	Expended For The Month	Expended Year To Date	Encumbered	Budget Remaining Balance
Regular Employees Salaries	\$1,533,419	\$120,512	\$476,171	\$0	\$1,057,248
Temporary/Summer Salaries	110,300	8,793	28,627	0	81,673
Overtime Wages	35,500	1,168	9,370	0	26,130
Pension Contributions	201,244	13,376	54,281	0	146,963
Social Security Contributions	129,950	9,912	39,637	0	90,313
Health Care Benefits	706,177	60,409	218,701	0	487,476
Life Insurance	9,646	853	3,378	0	6,268
Utility Expense	137,000	10,161	38,059	0	98,941
Office Expense	6,200	261	1,087	1,543	3,570
Communication	71,500	3,550	19,498	11,353	40,648
Information Technology	2,200	0	0	0	2,200
Education Training	2,050	485	673	0	1,377
Vehicle Maint. & Equipment	45,800	6,532	16,204	19,487	10,109
Operations Maintenance	130,104	1,270	27,017	41,106	61,982
Toll Collection	13,000	766	1,613	468	10,919
Uniform Expense	6,000	185	2,418	597	2,985
Business Insurance	192,831	15,419	62,685	0	130,147
Licenses & Inspections	1,600	0	245	0	1,355
State Police Bridge Security	415,903	31,367	122,146	0	293,757
EZPass Equipment/Maintenance	157,915	11,379	42,615	0	115,300
EZPass Operating Expense	549,979	30,166	159,461	0	390,518
TOTAL	\$4,458,318	\$326,564	\$1,323,888	\$74,553	\$3,059,877

Delaware River Joint Toll Bridge Commission
Budget vs Actual
For the Four Months Ending April 30, 2013

PORTLAND - COLUMBIA TOLL BRIDGE

	Budget 2013	Expended For The Month	Expended Year To Date	Encumbered	Budget Remaining Balance
Regular Employees Salaries	\$731,165	\$52,468	\$216,502	\$0	\$514,663
Temporary/Summer Salaries	35,655	1,433	6,171	0	29,484
Overtime Wages	20,945	1,082	8,718	0	12,227
Pension Contributions	95,969	5,772	23,572	0	72,397
Social Security Contributions	60,264	4,181	17,321	0	42,943
Health Care Benefits	323,437	27,465	99,765	0	223,672
Life Insurance	4,496	378	1,511	0	2,985
Utility Expense	74,020	3,311	25,593	13,008	35,419
Office Expense	3,423	175	1,085	1,399	939
Communication	42,462	1,862	10,733	0	31,729
Information Technology	2,200	0	0	0	2,200
Education Training	900	0	99	0	801
Vehicle Maint. & Equipment	19,720	1,931	10,529	6,892	2,299
Operations Maintenance	77,845	19,111	33,311	16,923	27,611
Toll Collection	7,900	478	1,279	317	6,303
Uniform Expense	3,500	361	486	0	3,014
Business Insurance	124,060	9,967	39,921	0	84,139
Licenses & Inspections	50	65	130	0	(80)
State Police Bridge Security	88,249	6,656	25,918	0	62,331
EZPass Equipment/Maintenance	94,749	2,437	21,136	0	73,613
EZPass Operating Expense	117,799	6,457	34,135	0	83,663
TOTAL	\$1,928,808	\$145,589	\$577,914	\$38,539	\$1,312,355

Delaware River Joint Toll Bridge Commission
Budget vs Actual
For the Four Months Ending April 30, 2013

DELAWARE WATER GAP TOLL BRIDGE

	Budget 2013	Expended For The Month	Expended Year To Date	Encumbered	Budget Remaining Balance
Regular Employees Salaries	\$2,296,180	\$177,334	\$688,890	\$0	\$1,607,290
Temporary/Summer Salaries	118,200	8,490	31,443	0	86,757
Overtime Wages	37,230	2,068	18,617	0	18,613
Pension Contributions	304,906	19,754	80,069	0	224,837
Social Security Contributions	192,119	14,276	56,817	0	135,302
Health Care Benefits	1,071,561	94,871	356,065	0	715,496
Life Insurance	18,817	1,246	4,977	0	13,840
Utility Expense	91,300	8,008	31,587	17,081	42,632
Office Expense	5,649	1,365	2,984	2,899	(234)
Communication	52,756	2,435	12,234	0	40,522
Information Technology	2,200	0	0	0	2,200
Education Training	900	42	736	0	164
Vehicle Maint. & Equipment	54,500	5,366	20,681	17,605	16,214
Operations Maintenance	116,870	1,834	749	52,126	63,996
Toll Collection	7,900	814	1,188	400	6,313
Uniform Expense	10,000	1,191	2,504	280	7,216
Business Insurance	376,788	29,820	118,658	0	258,130
Licenses & Inspections	170	0	190	0	(20)
State Police Bridge Security	603,263	45,498	177,171	0	426,091
EZPass Equipment/Maintenance	221,081	18,267	62,420	0	158,661
EZPass Operating Expense	882,922	48,416	255,940	0	626,981
TOTAL	\$6,465,311	\$481,094	\$1,923,918	\$90,391	\$4,451,002

Delaware River Joint Toll Bridge Commission
Budget vs Actual
For the Four Months Ending April 30, 2013

MILFORD - MONTAGUE TOLL BRIDGE

	Budget 2013	Expended For The Month	Expended Year To Date	Encumbered	Budget Remaining Balance
Regular Employees Salaries	\$764,673	\$60,082	\$241,528	\$0	\$523,146
Temporary/Summer Salaries	32,155	2,162	12,834	0	19,321
Overtime Wages	24,250	1,758	14,145	0	10,105
Pension Contributions	100,667	6,450	26,260	0	74,406
Social Security Contributions	62,812	4,869	20,148	0	42,664
Health Care Benefits	323,437	30,027	111,484	0	211,953
Life Insurance	4,699	418	1,672	0	3,027
Utility Expense	56,950	4,025	35,279	2,688	18,983
Office Expense	3,398	420	1,073	1,399	926
Communication	35,366	1,509	8,217	0	27,149
Information Technology	2,200	0	0	0	2,200
Education Training	900	35	134	0	766
Vehicle Maint. & Equipment	25,120	3,385	9,710	8,752	6,659
Operations Maintenance	80,735	375	13,373	35,283	32,079
Toll Collection	5,300	541	1,310	556	3,434
Uniform Expense	4,500	528	857	0	3,643
Business Insurance	87,844	6,851	27,716	0	60,128
Licenses & Inspections	50	0	0	0	50
State Police Bridge Security	72,862	5,495	21,399	0	51,463
EZPass Equipment/Maintenance	94,749	2,280	20,980	0	73,769
EZPass Operating Expense	110,223	5,917	31,404	0	78,819
TOTAL	\$1,892,891	\$137,128	\$599,521	\$48,678	\$1,244,691

Delaware River Joint Toll Bridge Commission
Budget vs Actual
For the Four Months Ending April 30, 2013

SOUTHERN DIVISION TOLL SUPPORTED BRIDGES

	Budget 2013	Expended For The Month	Expended Year To Date	Encumbered	Budget Remaining Balance
Regular Employees Salaries	\$1,842,686	\$141,632	\$570,927	\$0	\$1,271,759
Overtime Wages	56,320	541	14,074	0	42,246
Pension Contributions	242,313	14,805	59,996	0	182,317
Social Security Contributions	145,274	10,780	44,623	0	100,651
Health Care Benefits	885,239	80,808	295,626	0	589,613
Life Insurance	11,277	912	3,711	0	7,566
Utility Expense	69,240	4,973	16,905	0	52,335
Communication	8,100	480	1,992	0	6,108
Education Training	2,250	0	0	0	2,250
Vehicle Maint. & Equipment	14,300	0	829	0	13,471
Operations Maintenance	96,120	2,408	10,899	9,654	75,567
Uniform Expense	12,200	223	1,989	120	10,091
Business Insurance	555,314	45,775	179,301	0	376,013
Licenses & Inspections	900	0	195	0	705
State Police Bridge Security	1,422,849	107,311	417,874	0	1,004,975
TOTAL	\$5,364,382	\$410,649	\$1,618,942	\$9,774	\$3,735,666

Delaware River Joint Toll Bridge Commission
Budget vs Actual
For the Four Months Ending April 30, 2013

NORTHERN DIVISION TOLL SUPPORTED BRIDGES

	Budget 2013	Expended For The Month	Expended Year To Date	Encumbered	Budget Remaining Balance
Regular Employees Salaries	\$1,517,881	\$117,644	\$470,375	\$0	\$1,047,506
Overtime Wages	51,192	810	12,952	0	38,240
Pension Contributions	199,417	11,327	46,634	0	152,783
Social Security Contributions	120,034	8,986	36,029	0	84,005
Health Care Benefits	711,562	66,004	242,488	0	469,074
Life Insurance	9,268	780	3,085	0	6,184
Utility Expense	54,391	3,734	14,530	0	39,861
Office Expense	1,000	0	43	0	957
Communication	20,900	735	2,740	0	18,160
Education Training	1,100	0	0	0	1,100
Vehicle Maint. & Equipment	8,320	1,074	2,105	3,011	3,204
Operations Maintenance	41,600	5,158	8,116	14,482	19,002
Uniform Expense	5,300	0	435	38	4,828
Business Insurance	275,507	22,399	88,716	0	186,790
Licenses & Inspections	630	0	65	0	565
State Police Bridge Security	427,216	32,221	125,469	0	301,747
TOTAL	\$3,445,317	\$270,873	\$1,053,782	\$17,531	\$2,374,004

DELAWARE RIVER JOINT TOLL BRIDGE COMMISSION SYSTEM STATEMENT OF REVENUE AND EXPENSES FOR THE FOUR MONTHS ENDED APRIL 30, 2013

	T-M	NH-L	1-78	E-P	P-C	DWG	M-M	SDTS	NDTS	ADM	TOTAL 2013	% of Revenue	TOTAL 2012	% of Revenue
TOLL REVENUE														
Net Toll Revenue	4,609,177	927,071	17,493,823	3,124,153	647,365	9,707,001	418,893	-	-	-	37,089,381		36,415,007	
EZPass Fee	57,020	16,313	85,926	40,852	8,729	65,866	8,194	-	-	1,740	284,549		280,565	
Net Violation Fee Income	82,551	17,952	197,703	53,046	8,937	114,675	7,795	-	-	-	483,758		672,383	
REVENUE FROM TOLL ACTIVITY	\$ 4,748,748	\$ 960,435	\$ 17,775,350	\$ 3,322,051	\$ 664,931	\$ 9,969,542	\$ 434,882	\$ -	\$ -	\$ 1,740	\$ 37,177,679		\$ 37,367,954	
OPERATING EXPENSE														
Regular Employee Salaries	481,598	327,002	669,740	476,171	216,503	688,890	244,238	570,727	478,373	1,375,448	5,312,180	14.08%	5,418,979	14.50%
Temporary/Summer Salaries	22,237	8,762	25,955	25,627	4,171	31,443	14,524	-	-	-	136,029	0.36%	136,064	0.36%
Overtime Wages	9,636	10,911	19,860	9,370	8,718	18,617	14,145	14,074	12,952	2,186	120,070	0.32%	73,380	0.20%
Pension Contributions	59,194	34,793	71,275	34,281	23,572	80,869	25,260	46,634	59,596	136,431	387,151	1.04%	387,151	1.04%
Social Security Contributions	39,373	25,703	54,145	39,437	17,321	56,817	30,148	44,623	36,029	112,899	446,004	1.19%	453,017	1.21%
Health Care Benefits	244,578	156,499	326,682	218,701	99,765	386,065	111,484	295,636	242,488	483,174	2,514,445	6.66%	2,104,383	5.63%
Life Insurance	3,598	3,209	4,624	3,378	1,511	4,977	1,672	3,711	3,885	10,027	38,793	0.10%	38,459	0.10%
Relief Benefits	-	-	-	-	-	-	-	-	-	-	-	0.00%	-	0.00%
Unemployment Compensation	-	-	-	-	-	-	-	-	-	11,903	12,002	0.03%	11,390	0.03%
Utility Expense	97,378	62,579	122,522	100,089	15,993	31,247	35,279	16,905	14,540	-	324,843	0.86%	263,548	0.71%
Office Expense	433	546	1,735	1,087	1,605	2,964	1,673	40	40	49,408	50,477	0.15%	43,765	0.11%
Communication	18,849	14,547	13,422	19,498	10,733	31,234	8,217	1,993	2,740	69,195	170,448	0.45%	130,472	0.37%
Information Technology	-	-	-	-	-	-	-	-	-	118,156	118,156	0.31%	98,176	0.26%
Education Training	1,402	-	90	673	59	736	134	-	-	37,913	61,047	0.16%	58,483	0.15%
Vehicle Maint. & Equipment	22,397	18,873	21,255	16,204	10,529	20,681	9,710	829	2,105	126	119,700	0.31%	83,223	0.22%
Operations Maintenance	21,443	34,710	1,4377	27,817	33,311	749	13,373	10,899	8,116	3,954,460	576,952	1.58%	492,293	1.32%
Communication	-	-	-	-	-	-	-	-	-	4,116	4,116	0.01%	5,972	0.02%
Toll Collection	3,466	3,618	3,841	1,613	1,279	1,188	1,310	-	-	-	14,586	0.04%	14,017	0.04%
Uniform Expense	271	1,055	712	2,418	486	2,584	857	1,959	435	188	10,908	0.03%	32,531	0.09%
Business Insurance	84,580	66,952	155,594	62,685	39,921	118,658	27,716	179,301	84,716	50,381	879,103	2.33%	823,633	2.20%
Licenses & Inspection	195	130	65	245	138	190	-	195	65	-	1,215	0.00%	3,998	0.01%
Advertising	-	-	-	-	-	-	-	-	-	2,489	2,489	0.01%	5,034	0.01%
Professional Services	-	-	-	-	-	-	-	-	-	178,746	178,746	0.47%	257,737	0.69%
State Police Bridge Security	102,418	36,192	219,570	122,146	25,918	177,171	24,399	417,974	125,469	-	1,229,117	3.25%	1,350,833	3.62%
EZPass Equipment/Maintenance	47,090	25,611	67,764	42,415	21,156	67,470	29,280	-	-	-	291,616	0.77%	309,840	0.83%
General Contingency	-	-	-	-	-	-	-	-	-	6,239	6,239	0.02%	-	0.00%
EZPass Operating Expense	221,134	62,641	330,806	159,261	34,128	255,940	31,404	-	-	-	1,097,633	2.91%	1,003,633	2.68%
TOTAL OP., MAINT., & ADM	\$ 1,571,383	\$ 896,744	\$ 2,603,765	\$ 1,323,280	\$ 577,914	\$ 1,932,918	\$ 599,531	\$ 1,418,942	\$ 1,083,702	\$ 2,786,477	\$ 14,544,354	37.77%	\$ 13,713,631	36.70%
NET OPERATING REVENUE	\$ 3,227,465	\$ 65,692	\$ 15,791,566	\$ 1,698,763	\$ 87,017	\$ 8,045,624	\$ (164,650)	\$ (1,618,943)	\$ (1,083,702)	\$ (2,784,177)	\$ 23,433,125	62.00%	\$ 23,654,323	63.30%
OTHER OPERATING INC/EXP														
Other Operating Income	-	-	73	110	-	-	-	-	-	44,206	44,209	0.12%	85,826	0.23%
TOTAL OTHER OPERATING INC	\$ 0.00	\$ (209,377)	\$ (408,483)	\$ (318,990)	\$ (119,407)	\$ (468,357)	\$ (338,493)	\$ (408,633)	\$ (228,863)	\$ 2,740,571	\$ 23,433,125	0.12%	\$ 23,654,323	63.30%
NET OPERATING INC	\$ (143,685)	\$ (143,685)	\$ (143,685)	\$ (143,685)	\$ (143,685)	\$ (143,685)	\$ (143,685)	\$ (143,685)	\$ (143,685)	\$ (143,685)	\$ (143,685)	0.37%	\$ (143,685)	0.37%
NON-OPERATING REV/EXP														
Interest Revenue	-	-	-	-	-	-	-	-	-	-	272,086	0.72%	593,377	1.59%
Other Non-Operating Revenue	-	-	-	-	-	-	-	-	-	-	11,544	-0.03%	7,477	-0.02%
Emergency Repair	-	-	-	-	-	-	-	-	-	-	(5,918,153)	-13.67%	(6,720,449)	-17.97%
Interest Expense	-	-	-	-	-	-	-	-	-	-	(3,940,289)	-9.41%	(3,940,289)	-9.41%
Depreciation Expense	-	-	-	-	-	-	-	-	-	-	(4,614,423)	-10.52%	(4,614,423)	-10.52%
OPER Asset Expense	-	-	-	-	-	-	-	-	-	-	-	0.00%	-	0.00%
TOTAL NON-OPERATING REV/EXP	\$ (143,685)	\$ (143,685)	\$ (143,685)	\$ (143,685)	\$ (143,685)	\$ (143,685)	\$ (143,685)	\$ (143,685)	\$ (143,685)	\$ (143,685)	\$ (143,685)	0.37%	\$ (143,685)	0.37%
CHANGE IN NET ASSETS	\$ (143,685)	\$ (143,685)	\$ (143,685)	\$ (143,685)	\$ (143,685)	\$ (143,685)	\$ (143,685)	\$ (143,685)	\$ (143,685)	\$ (143,685)	\$ (143,685)	0.37%	\$ (143,685)	0.37%

DELAWARE RIVER JOINT TOLL BRIDGE COMMISSION

Meeting of May 20, 2013

ADMINISTRATION

The following Pages reflect the reports on those items assigned to the Administration Department. Each item is reported separately and page numbered accordingly.

DELAWARE RIVER JOINT TOLL BRIDGE COMMISSION

Meeting of May 20, 2013

PURCHASING REPORT INDEX

MONTH OF APRIL 2013

SUBJECT	DESCRIPTION	PAGE NUMBER
Purchasing	Monthly Purchasing Report Covering the Month of APRIL 2013	1-5
Purchasing	Supplemental Monthly Purchase Report Lessors, Maintenance and Service Contracts Expiring Between June 2013 and August 2013	6-7

DELAWARE RIVER JOINT TOLL BRIDGE COMMISSION

Meeting of May 20, 2013

MONTHLY PURCHASING REPORT

April 2013

This report itemizes all orders for purchases made for the month of April 2013, showing the divisions chargeable for the expense and the source of authority for issuance of the purchase order. This authority is broken into three categories:

- (1) By authority of the Commission
- (2) By authority of the Executive Director or his designate
- (3) By authority of the Superintendent

The purchasing activities for the month culminated in the preparation and placement of 63 purchase orders. To secure competitive prices on items being purchased, 80 price inquiries were sent out for 29 of the requisitions leading to purchase orders, an average of 2.75 per order (80÷29). Some of the larger procurements of over \$5,000.00 during the period are shown below:

- A Purchase Order was issued, in the total amount of \$25,633.80, for roadway salt for the Easton-Phillipsburg Toll Bridge and Toll-Supported facilities in District II for the period April through December 31, 2013.
- A Purchase Order was issued, in the total amount of \$10,550.00, for HVAC preventative maintenance services to our seven (7) Toll Facilities for 2013.
- A Purchase Order was issued, in the total amount of \$9,390.00, for eight (8) portable emergency generators, as part of the post-Super Storm Sandy review of areas for enhancement.
- A Purchase Order was issued, in the total amount of \$7,827.50, for an attenuator repair at the I-78 Toll Plaza.
- A Purchase Order was issued, in the total amount of \$7,430.66 for the Armored Truck Service Contract for cash pick-up from our seven (7) Toll Facilities for the period March through May 31, 2013.

In addition to the practices employed incidental to purchase of materials, etc., from vendors on a direct basis, the Commission also purchases via direct utilization of the purchasing processes of the State of New Jersey, the Commonwealth of Pennsylvania and other joint purchasing arrangements.

* * *

DELAWARE RIVER JOINT TOLL BRIDGE COMMISSION
REPORT OF PURCHASING ACTIVITIES
April 2013

PO Number	Vendor Name	General Description	Req Dept	Contract/Resolution/ Comment	** BY AUTHORITY OF **		
					Commission	Director	Dist. Supt.
20130119	GARDA CL ATLANTIC, INC	ARMORED TRUCK SERVICE	MULTI			7,430.06	
20130120	CDW-G	HP ENVY X2 TEST TABLET	IT			685.00	
20130121	INTEGRITY MECHANICAL INC.	NO HEAT BOILER REPAIR	PC			252.00	
20130122	TILLEY FIRE EQUIPMENT INC.	FIRE ALARM ANNL TEST & INSPECT	MULTI			2,666.32	
20130123	ALTEC INDUSTRIES	REPAIRS TO LIFT TRUCK	TM			1,203.99	
20130124	CUMMINS-ALLISON CORPORATION	PM CONTRT-CURRENCY COUNTERS	TM			1,176.00	
20130125	B&B ARMR	ACCESS GATE REPLACEMENT MOTOR	DWG			1,869.56	
20130126	FRANK CONNELL ASSOCIATES	BANKING MACHINE REPAIR	MM			345.00	
20130127	INTERNATIONAL SALT COMPANY LLC	ROADWAY SALT-EP	EP	NJ T-0213		25,633.80	
20130128	FRED BEANS FLEET GROUP	SIDE VIEW MIRROR REPLACEMENT	NHL			344.83	
20130129	GEORGE ALLEN WASTEWATER	PUMP OUT SEPTIC TANK	NHL			355.00	
20130130	BIRD CONTROL SERVICES	BIRD CONTROL - DII (NDST)	EP			1,374.00	
20130131	SIMPLEX GRINNELL	BACKFLOW PREVENTION INSPECTION	I78			234.50	
20130132	JOHNSON DISTRIBUTING, INC.	VEHICLE CLEANER	DWG			404.62	
20130133	QUEEN CITY ELECTRICAL SUPPLY	MAINT. BUILDING TRANSFORMER	I78			1,670.00	
20130134	BOUNTIFUL ACRES CAPITAL RESERVE	TREES/PLANTS RT. 1 LANDSCAPING	TM	ENG 2200-12-12	2,660.00		
20130135	BRITTON INDUSTRIES CAPITAL RESERVE	WOOD CHIPS-RT. 1 LANDSCAPING	TM	ENG 2200-12-12	647.50		
20130136	ENNIS PAINT INC	ROADWAY LINE PAINT	NHL	PA 4600014835		1,253.25	
20130137	A & B WIPERS	WIPING RAGS	TM			340.00	
20130138	FYR-FYTER SALES & SERVICE, INC.	ANNL FIRE EXTINGUISHER INSPECT	DWG	NJ T-0576		810.03	
20130139	SPECIALTY INDUSTRIAL PRODUCTS	VELCRO LOCKING TABS	E2P			1,332.00	

DELAWARE RIVER JOINT TOLL BRIDGE COMMISSION
REPORT OF PURCHASING ACTIVITIES
April 2013

PO Number	Vendor Name	General Description	Req Dept	Contract/Resolution/ Comment	** BY AUTHORITY OF **		
					Commission	Director	Dist. Supt.
20130140	FTESIAN	BREEZE ANEMOMETER-1	ESS			1,318.77	
20130141	AIM EXTERMINATION	SPIDER & ANT CONTROL SERVICE	DWG			1,225.00	
20130142	CENTURY PEST CONTROL	SPIDER & ANT CONTROL SERVICE	TM			770.00	
20130143	ARAMSCO	FIRST AID SUPPLIES	EP			241.39	
20130144	LEHIGH VALLEY JNTRL SUPPLY CO	PAPER & PLASTIC PRODUCTS	EP			2,989.47	
20130145	LEHIGH VALLEY JNTRL SUPPLY CO	JANITORIAL SUPPLIES	EP			714.40	
20130146	LEHIGH VALLEY JNTRL SUPPLY CO	PAPER & PLASTIC PRODUCTS	TM			3,453.43	
20130147	DELL MARKETING LP	LAPTOP UPGRADE FOR DED	IT	PA COSTARS 3		2,098.25	
20130148	FIRESTONE TIRE	PATROL VEHICLE TIRES	DWG			555.96	
20130149	MOTOROLA INC.	RADIO BATTERIES	ESS	NJ 53804		907.50	
20130150	STARK UNIFORM	CLOTHING; OFFICERS	TM	PA COSTARS 12		120.00	
20130151	CAMDEN BAG & PAPER CO.	PAPER & PLASTIC PRODUCTS	NHL			1,459.44	
20130152	GRAINGER	FIRST AID SUPPLIES	NHL			329.72	
20130153	CAMDEN BAG & PAPER CO.	PAPER & PLASTIC PRODUCTS	DWG			2,034.62	
20130154	LEHIGH VALLEY JNTRL SUPPLY CO	JANITORIAL EQUIPMENT& SUPPLIES	NHL			1,171.42	
20130155	CAMDEN BAG & PAPER CO.	JANITORIAL EQUIPMENT& SUPPLIES	DWG			475.15	
20130156	LEHIGH VALLEY JNTRL SUPPLY CO	JANITORIAL EQUIPMENT& SUPPLIES	DWG			972.32	
20130157	SIT ON IT C/O CORPORATE FACILITIES	24/7/365 STOOL W/ BRKAWY ARMS	MM	PA Contract 4400004343		1,488.24	
20130158	GREEN POND NURSERY INC.	LANDSCAPE MATERIALS	EP			900.00	
20130159	NORTHAMPTON FARM BUREAU	LANDSCAPE MATERIALS	EP			1,631.00	
20130160	LEHIGH VALLEY JNTRL SUPPLY CO	PAPER & PLASTIC PRODUCTS	I78			3,218.70	

DELAWARE RIVER JOINT TOLL BRIDGE COMMISSION
REPORT OF PURCHASING ACTIVITIES
April 2013

PO Number	Vendor Name	General Description	Req Dept	Contract/Resolution/ Comment	** BY AUTHORITY OF **		
					Commission	Director	Dist. Supt.
20130161	CAMDEN BAG & PAPER CO.	JANITORIAL EQUIPMENT& SUPPLIES	I78			689.05	
20130162	LEHIGH VALLEY JNTRL SUPPLY CO	JANITORIAL EQUIPMENT& SUPPLIES	I78			1,354.73	
20130163	WHITEHALL TURF EQUIPMENT	PUSH LAWN MOWERS-3	NHL			546.00	
20130164	ARAMSCO	FIRST AID SUPPLIES	TM			432.35	
20130165	GARDEN STATE HIGHWAY PRODUCTS	HIGHWAY SAFETY SIGNS	PC	NJ T-0121		879.60	
20130166	KUCKER-HANEY PAINT CO.	PAINTING EQUIPMENT & SUPPLIES	I78	NJ T-0927		953.04	
20130167	SIMPLEX GRINNELL	BOILER REPAIR	I78			1,386.00	
20130168	EMR POWER SYSTEMS LLC	EMERGENCY GENERATOR SERVICES	MULTI			9,390.00	
20130169	INTEGRITY MECHANICAL INC.	HVAC PREVENTATIVE MAINTENANCE	MULTI			10,550.00	
4 20130170	JC EHRLICH PEST CONTROL	SPIDER & ANT CONTROL	MULTI			2,156.00	
20130171	HILLTOP SALES & SERVICE, INC.	JOHN DEERE MOWER PARTS	I78			1,073.26	
20130172	WARREN COUNTY SERVICE CTR INC	LAWN MAINTENANCE EQUIPMENT	EP			2,121.84	
20130173	KUCKER-HANEY PAINT CO.	PAINTING EQUIPMENT	EP	NJ T-0927		675.00	
20130174	KUCKER-HANEY PAINT CO.	PAINTING EQUIPMENT & ACCESSORIES	TM	NJ T-0927		1,062.60	
20130175	M.H. CORBIN	ATTENUATOR FENDER PANELS	DWG			1,950.00	
20130176	WE RENT EQUIPMENT LLC	FERRIS MOWER PARTS	I78			286.80	
20130177	METALS USA	ANNUAL STEEL ORDER	TM			1,828.00	
20130178	COLLINSON, INC.	ATTENUATOR REPAIR	I78			7,827.50	
20130179	COLLINSON, INC.	GUIDE RAIL REPAIR	I78			2,300.00	
20130180	COLLINSON, INC.	GUIDE RAIL REPAIR	I78			5,482.50	
20130181	COLLINSON, INC.	GUIDE RAIL REPAIR	SDTS			2,950.00	

DELAWARE RIVER JOINT TOLL BRIDGE COMMISSION
REPORT OF PURCHASING ACTIVITIES
April 2013

PO Number	Vendor Name	General Description	Req Dept	Contract/Resolution/ Comment	** BY AUTHORITY OF **		
					Commission	Director	Dist. Supt.
Purchase Order Count: 63				AUTHORITY TOTALS:	\$3,307.50	\$133,349.01	\$0.00
				GRAND TOTAL:	\$136,656.51		

DELAWARE RIVER JOINT TOLL BRIDGE COMMISSION

Meeting of May 20, 2013

**SUPPLEMENTAL MONTHLY PURCHASING REPORT
LESSORS, MAINTENANCE AND SERVICE CONTRACTS
EXPIRING BETWEEN JUNE 2013 AND AUGUST 2013**

As requested by Commission Members at the August 31, 1998 meeting, reproduced hereunder are all lessors, maintenance and service contracts that will expire within a three-month period, from June 2013 through August 2013.

A compendium of existing lessors, maintenance and service contracts has been transmitted to all Commission Members under separate cover.

ACTION RECOMMENDED

Adopt a Resolution authorizing receipt and filing of the report.

DELAWARE RIVER JOINT TOLL BRIDGE COMMISSION

MEETING OF MAY 20, 2013

LESSOR'S, MAINTENANCE AND SERVICE CONTRACTS

No Report

Delaware River Joint Toll Bridge Commission
Meeting of May 20, 2013

**E-Z PASS REPORT
ETC CUSTOMER SERVICE CENTER (CSC)
OPERATION REPORT FOR THE E-ZPASS SYSTEM
APRIL 2013**

SUBJECT	DESCRIPTION	PAGE NUMBER
Management Operations	Management Operations Report E-ZPass Report April	1-4

Delaware River Joint Toll Bridge Commission
Meeting of May 20, 2013

**E-Z PASS REPORT
ETC CUSTOMER SERVICE CENTER (CSC)
OPERATION REPORT FOR THE E-ZPASS SYSTEM
APRIL 2013**

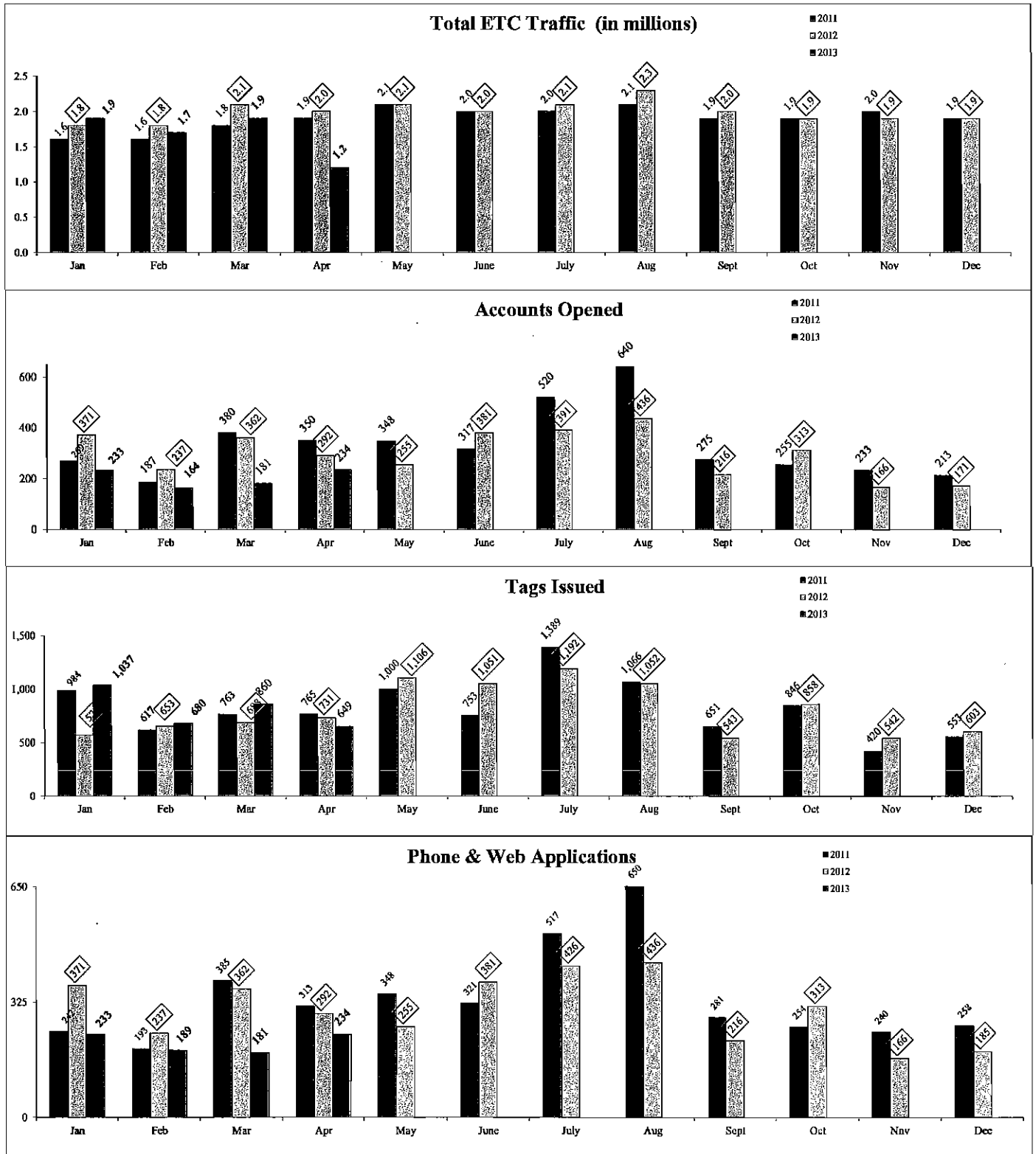
ETC has submitted an Operations Report that summarizes E-ZPass transponder and account information for April.

Key statistics presented in the report are as follows:

ETC Customer Service Center Reported Transponder and Account Activity	April 2013
Total Number of Active (029)Transponders	136,027
Total Number of Accounts	66,953
Average Number of Transponders Issued Per Day	28
Average Number of Accounts Opened Per Day	10
Average Number of Calls Per Day	509
Total Number of Applications Processed	234

Delaware River Joint Toll Bridge Commission
Meeting of May 20, 2013

E-Z PASS REPORT
ETC CUSTOMER SERVICE CENTER (CSC)
OPERATION REPORT
APRIL 2013



Delaware River Joint Toll Bridge Commission
Meeting of May 20, 2013

**E-Z PASS REPORT
ETC CUSTOMER SERVICE CENTER (CSC)
OPERATION REPORT FOR THE E-ZPASS SYSTEM
APRIL 2013**

The E-ZPass Department has submitted an Operations Report that summarizes E-ZPass Customer Service Call Activity for April. Key statistics in this report are as follows:

<u>E-ZPASS DEPARTMENT CSC CALL ACTIVITY</u>	Total Calls for the Month of March
Calls Referred to ETC	116
Replenishment Inquiries	14
Billing Inquiries	20
Account Modification Requests	40
Requests to Close Account	4
Violation Notification Inquires	38
DRJTBC Inquiries	9
Calls referred to Other Departments (Human Resources and Engineering)	9
Total Number of Calls for April	125

Delaware River Joint Toll Bridge Commission
Meeting of May 20, 2013

**E-Z PASS REPORT
ETC CUSTOMER SERVICE CENTER (CSC)
OPERATION REPORT FOR THE E-ZPASS SYSTEM
APRIL 2013**

Total Number of E-ZPass QuickStart Transponders Issued to Patrons
District I, II and III

	Jan	Feb	Mar	April	May	June	July	Aug	Sept	Oct	Nov	Dec	Total
2010	54	21	89	158	96	87	190	109	83	51	67	55	1,060
2011	39	137	72	86	98	157	322	224	62	61	51	72	1,381
2012	164	107	109	92	58	151	376	209	85	101	48	64	1,564
2013	88	79	67	55									234

E-ZPass QuickStart events are scheduled on select days in District I at the Trenton-Morrisville Administrative Office, District II at the I-78 Welcome Center and District III at the Delaware Water Gap Welcome Center. DRJTBC's E-ZPass QuickStart schedule is posted on the Commission's website.

E-ZPass Customer Service Center and In-Lane Meetings and Conference Calls

E-ZPass Customer Service Center/Violation Processing Center DBM (Contract No. DB-427D)

1. Moderate and participate in bi-weekly conference calls with DRJTBC and ETC staff to discuss customer service, finance and toll audit items.
2. Moderate and participate in Quarterly Operations Meetings with DRJTBC and ETC staff to discuss customer service, finance and toll audit items.

E-ZPass In-Lane Toll System DBM (Contract No. DB-427C) and E-ZPass Customer Service Center/Violation Processing Center DBM (Contract No. DB-427D)

1. Moderate and participate in Quarterly Operations and Maintenance conference calls to discuss general electronic toll collection items with ACS, TransCore, ETC and DRJTBC staff.

IAG Reciprocity Committee and IAG PR & Marketing Committee

1. Represent the Commission at the IAG Reciprocity and PR & Marketing Committee Meetings.

E-ZPass CSC/VPC Price Proposal Updates (PTC & NJTA)

On Thursday, May 2nd, Commission staff and representatives from the Pennsylvania Turnpike Commission reviewed and discussed questions relative to the PTC's E-ZPass CSC/VPC Price Proposal. Commission staff and representatives from the New Jersey Turnpike Authority are scheduled to meeting on Tuesday, May 7th to review and discuss the NJTA's E-ZPass CSC/VPC Price Proposal.

DELAWARE RIVER JOINT TOLL BRIDGE COMMISSION

Meeting of May 20, 2013

ELECTRONIC TOLL COLLECTION PROGRAM

MONTH OF APRIL 2013

SUBJECT	DESCRIPTION	PAGE NUMBER
ETC PROGRAM	Electronic Toll Collection Program Report	1-2

DELAWARE RIVER JOINT TOLL BRIDGE COMMISSION

Meeting of May 20, 2013

ELECTRONIC TOLL COLLECTION PROGRAM MONTH OF APRIL 2013

The following items were recently initiated, accomplished or performed during the above noted month:

Activities for the In-Lane Toll System

1. Xerox is preparing the annual ORT System Certification.
2. Xerox submitted a cost proposal for the replacement of treadle frames in the conventional toll lanes at the I-78 Toll Bridge (lanes 2 & 3), the Delaware Water Gap Toll Bridge (lanes 5, 6 and 7) and a repair of a treadle frame at the I-78 Toll Bridge (lane 4). The cost proposal is under review by Commission Staff and if found acceptable will be submitted at the May 2013 Commission Meeting.
3. Xerox submitted the 2013 ETC spare parts/consumable quotation. A resolution to purchase the spare parts was passed at the April 2013 Commission Meeting. Commission Staff will prepare and issue a purchase order to Xerox.
4. Xerox responded to the I-78 toll facility lightning strike. In addition to the damage to the Commission facility, the lightning strike destroyed both overhead laser scanners installed in the Open Road Tolling (ORT) lanes making the lanes operate in a degraded mode. With an ORT lane closure provided by the Commission Maintenance Department, Xerox replaced the damaged laser scanners with two (2) units from the spare parts inventory and returned the lanes to full functioning operations.

Activities for the E-ZPass Customer Service Center/Violation Processing Center

1. ETC participated in weekly CSC/VPC Operations Calls.
2. Commission staff has prepared a letter to ETC informing them that a resolution was passed at the April 2013 Commission Meeting exercising the second, 1-year option that is included in the agreement. This option will allow for the continued operation of the CSC/VPC from June 1, 2013 to May 31, 2014.

General Electronic Toll Collection Program Activities

1. Commission Staff participated in the IAG E-ZPass Policy and the Executive Management Committee meetings.
2. Commission Staff is working with Commission PA General Counsel on draft legislation being prepared by the Pennsylvania Turnpike Commission that provides the ability to toll agencies to request PennDOT to suspend an individual's vehicle registration for non-payment of tolls. The owner of the vehicle would have to have six or more toll violations or owe more than \$500 in outstanding tolls, fees or costs, looking back a maximum of

DELAWARE RIVER JOINT TOLL BRIDGE COMMISSION

Meeting of May 20, 2013

three years. We are requesting that language be added to the definition of tolling entity to ensure that the Commission falls under the definition.

3. Commission Staff received price proposals from the Pennsylvania Turnpike Commission's (PTC) and New Jersey Turnpike Authority (NJTA) for the potential transition into the Pennsylvania or New Jersey Regional CSC/VPC. The proposals were reviewed by Commission Staff. Commission Staff has provided a list of clarification questions to each agency and has scheduled meetings that will allow for an exchange of information in order to fine tune the proposals.

DELAWARE RIVER JOINT TOLL BRIDGE COMMISSION

Meeting of May 20, 2013

**OPERATION REPORT INDEX
FOR
TRANSITION AND EFFICIENCY OFFICER**

SUBJECT	DESCRIPTION	PAGE NUMBER
Transition and Efficiency Officer	Status Report Month of April 2013	1

DELAWARE RIVER JOINT TOLL BRIDGE COMMISSION

Meeting of May 20, 2013

INTERIM TRANSITION AND EFFICIENCY OFFICER

May 20, 2013

During the March 2013 Commissioners' Committee meeting, the Interim Transition and Efficiency Officer (ITEO) gave an update presentation to the commissioners highlighting the progress made in first three months of the survey.

Over the course of the last four months, the ITEO conducted over twenty (20) on-site interviews with Department Managers and District Superintendents and found them to be candid and forthcoming with their assessments of what the organization does well and were enthusiastic in identifying potential areas of improvement. Interviews followed a written managerial survey with open-ended questions, and afforded supervisors the opportunity to go into more depth in a confidential setting.

On April 2013, the ITEO completed collecting the efficiency questionnaires and conducting interviews with the managerial staff. In addition, the ITEO started contacting peer agencies to gather more information that may be useful to the DRJTBC as this report is being effectively developed.

As informational data continues to be gathered and analyzed in a comprehensive manner, it is being compiled into a report that will be presented to the Commissioners.

On April 30, 2013, during a meeting with Mr. Joseph Resta and Mr. Arnold Conoline, the first rough draft of the report was discussed and constructive guidance and enhancements were identified for the development of the final document that will include findings from the managers, executive team input, and any efficient practices from peer agencies in the field deemed compatible with DRJTBC operations.

During the months of May and June, the ITEO is expecting to finalize the Transition and Efficiency report and will follow the guidance of the Executive Director and commissioners.

DELAWARE RIVER JOINT TOLL BRIDGE COMMISSION

Meeting of May 20, 2013

COMMUNICATIONS

The following Pages reflect the reports on those items assigned to the Communications Department. Each item is reported separately and page numbered accordingly.

DELAWARE RIVER JOINT TOLL BRIDGE COMMISSION

Meeting of May 20, 2013

**Operation Index
For
Communications**

SUBJECT	DESCRIPTION	PAGE NUMBER
Communication	Status Report Month of April	1-4

DELAWARE RIVER JOINT TOLL BRIDGE COMMISSION

Meeting of May 20, 2013

COMMUNICATIONS REPORT

April 2013

- **COMMISSION AWARENESS EFFORTS :**

Conveyance of Steel Components from Lumberville-Raven Rock Pedestrian Bridge to Roebling Museum – Conceived coordinated and executed a small-scale media event to raise public awareness of the Commission's historic preservation and community partnering efforts. The event involved the transfer of two steel components – suspension hanger plates and wire-rope sleeves – that had been removed from the Lumberville-Raven Rock Toll-Supported Bridge as part of the rehabilitation project that began in early March. The items were transported to the Roebling Museum in Florence, N.J. and handed over by Executive Director Joseph Resta and Assistant Chief Engineer Roy Little to the facility's executive director and chairman. The "photo op" attracted both a reporter and photographer from the Burlington County Times. The Commission also issued its own press release and photographs the following day, generating coverage in both weekly and daily newspapers and Internet outlets. The event also is expected to be highlighted in a future edition of the museum's newsletter. One residual benefit of the publicity was that it helped reinforced the bridge-is-closed message at time when potential visits tend to spike due to warming weather. Other tasks: draft Commission invite e-mail; secure photographer; make pre-event site visit; attend and stage event; and conducted follow-up with Burlington County Times reporter.

Contract Awards for Easton-Phillipsburg (Route 22) Toll Bridge Rehabilitation Project – Announced the Commission's construction and CM/CI contract awards for the upcoming Easton-Phillipsburg Toll Bridge Rehabilitation Project, which is expected to get underway in June. While the contract awards were the news angle, the press release used the occasion to stress the traffic impacts that are likely to arise once construction gets underway.

Scudder Falls Bridge Archaeological Dig: The Ewing Observer/Mercer Space.com published a detailed article on the results of the archaeological dig that was conducted in the vicinity of the Scudder Falls Bridge in 2010 and 2011. The article, which included photographs provided by the Commission, concentrated on the archaeological record, the recovered artifacts and what life was for nomadic Indians who roamed the river and the surrounding region before European colonization. Archaeologists employed by the engineering consulting firm AECOM figured prominently in the article.

- **MEDIA RELATIONS:**

Hot Topics: Weekend single-lane travel configurations for the I-78 Toll Bridge PA Approaches Paving Improvement Project; closure of parking lot to overnight parking at I-78 Welcome Center; Lumberville-Raven Rock Bridge

DELAWARE RIVER JOINT TOLL BRIDGE COMMISSION

Meeting of May 20, 2013

rehabilitation project reaches halfway point (with photographs of enshrouded bridge); Star-Ledger columnist Paul Mulshine opines on electronic tolling and all-electronic tolling; four-hour closure of the New Hope-Lambertville Toll-Supported Bridge to overweight vehicle; Commission donation of Lumberville-Raven Rock Bridge artifacts to Roebling Museum; missing Hopewell man found in Delaware-Raritan Canal might jump from the L-RR-TSPB; traffic diverted to DWGTB after police chase; I-78 tractor trailer crash; New Hope councilwoman proposes to light up the NH-LTSB; neighbors object to Riegelsville Bridge plan; DRJTBC and PA right to know law; NH-LTB approaches project contract; E-PTB rehab project contract.

- **E-ZPASS ACTIVITIES:**

Shad Fest: Worked with community affairs to update, edit and proofread updated fact sheets for various Commission projects: Lumberville-Raven Rock; Easton-Philipsburg (Route 22) Toll Bridge; New Hope-Lambertville (Route 202) Toll Bridge approach roadways, bridges and ramps; and the I-95/Scudder Falls Bridge Improvement Project.

Website Alert: Created a PDF document to help guide E-ZPass account holders who may periodically encounter difficulty logging into the www.ezpassdrjtbc.com website. The troubleshooting instructions outline a series of steps for the customer to follow to clear their computer caches that may be blocking entry to the website.

- **COMMUNITY AFFAIRS:**

Easton-Phillipsburg Toll Bridge Rehabilitation Project: Assigned a variety of tasks in preparation for a campaign to raise public awareness about the traffic impacts and travel delays that are likely to arise from the Easton-Phillipsburg Toll Bridge Rehabilitation Project. These tasks are part of a plan that involves meetings, direct communications, publicity, signage and social media to get the public prepared for the onset of long-term lane closures on the heavily used bridge.

Lumberville-Raven Rock Bridge Rededication Ceremony: Initiate preparations for rededication ceremony for Lumberville-Raven Rock Bridge. Make initial invitations. Edit plaque draft and insert historical language and corrections. Issue tentative hold-the-date. Attend organization meeting arranged by Rich McClellan.

- **CAPITAL IMPROVEMENT PROGRAM**

I-78 Toll Bridge PA Approach Paving Improvements: Assisted project team and engineers in seeking to raise awareness of 39-hour single-lane travel restrictions on weekends in along the Commission's 2.25-mile portion of I-78 in Pennsylvania. This involved relaying VMS and 511 post info to PennDOT, making direct postings on NJ511, issuing press releases, and updating featured website entries. Also handled a variety of customer calls on this project

DELAWARE RIVER JOINT TOLL BRIDGE COMMISSION
Meeting of May 20, 2013

throughout the month. Initiated concerted effort to advise truckers of approaching overnight closures of I-78 Welcome Center parking lot, including distributions to NJ and PA trucking organizations and national outlets like Dave Nemo's satellite-radio trucking program.

Overnight Closures of I-78 Welcome Center: Working with media consultant Brabender Cox, initiated a concerted effort to warn long-haul truckers about overnight closures of the parking lot for the I-78 Welcome Center adjacent to the Commission toll plaza. The parking lot is frequently used by truckers as an overnight resting spot. The parking lot is undergoing improvements and paving as part of the project currently taking place along the Commission's PA segment of I-78.

- **WEBSITE:**

Lumberville-Raven Rock Project Page: Updated the project entry and provided work-related photographs that were uploaded to further update the page.

Engineering Assistance: Post bid results for E-P construction contract.

Revise I-78 Toll Bridge PA Approach Paving Improvements: Update webpage throughout the month to reflect weekend 39-hour closures and other changes.

INTERNAL/EXTERNAL COMMUNICATIONS

- Drafted RFP for new website service provider and circulated the document for review and comments; incorporated insurance requirements.
- Handled Trentonian reporter inquiry regarding bridge video footage of Sarah Majoras, the Lambertville woman who apparently died after falling into the frozen canal during a winter cold snap; respond to Paul Mulshine E-ZPass inquiry; fielded Hunterdon Democrat, Trenton Times and Doylestown Intelligencer calls on NH-LTSB four-hour closure; and addressed Infra-Americas reporter Paul Tilt inquiry on Scudder Falls P3 status..
- Provided responses for Pocono Record inquiry regarding the Delaware Water Gap Toll Bridge.
- Compiled multi-element public awareness plan for the upcoming Easton-Phillipsburg Toll Bridge Rehabilitation Project and assigned various tasks to Community Affairs, Operations, website consultant Liquid INT, and Brabender Cox.
- Review response letter to Lumberville business regarding Commission's toll house.
- Acquired bridge photographs from executive director of Delaware & Lehigh National Heritage Corridor.
- Attend meeting on suicide crisis-intervention signs and bridge-jumping warning signs.

DELAWARE RIVER JOINT TOLL BRIDGE COMMISSION
Meeting of May 20, 2013

- Responded to high school student's inquiry about working on the I-78 project as a means of getting engineering experience.
- Negotiated reduced membership fee for the Greater Lehigh Valley Chamber of Commerce.
- Initiated further outreach with area bicycling clubs to help raise awareness of continuing Lumberville-Raven Rock bridge closure in advance of spring warming trend.
- Edit Lumberville-Raven Rock stakeholder letter.
- Cull various bridge project icons for purposes of creating an icon specific to the Easton-Phillipsburg Toll Bridge.
- Participate in phone conference on tree/vegetation removal along Route 1 in Trenton's Mill Hill neighborhood.
- Draft talking points for executive director for NJ Trans Con meeting.
- Facilitated response to truck customer call on incorrect receipt for passage at T-M bridge.
- Responded to CBS 60 Minutes call regarding Nurse Collins murder case in NJ.
- Six NJ 511 traffic posts for the month.
- Draft Commission invite e-mail for Roebling Museum event; secure photographer; make pre-event site visit; attend event.
- Send various historical photos of Easton-Phillipsburg Toll Bridge to Lehigh Valley historian Leonard S. Buscemi.
- Attend Green Team meeting.
- Attend meeting regarding competing gun issue demonstrations.
- Meet with Lendell Jones on countdown/progress thermometer sign for E-P project.
- Meet with Ethan Vickers to revise outline of 2012 annual report.
- Set up online subscriptions for Trenton Times and Pocono Record.
- Phone call with Bon Pento of PennDOT to set up PA511 construction/lane closure alerts for Easton-Phillipsburg Toll Bridge Project.
- Edit various executive director communications.
- Meet with Rich McClellan on Easton-Phillipsburg Project/traffic impacts PowerPoint presentation.
- Phone inquiry from Pocono Mountains Visitors Center executive director Carl Wilgus regarding sequestration cuts at the Delaware Water Gap National Recreation Area.
- Handle constituent-related phone call from PA Rep. Quinn's office regarding CAI-funded canal footbridge in Riegelsville.
- Assign Ethan Vickers responsibility for creating easy-to-understand lane closure map for Easton-Phillipsburg Toll Bridge and easy-to-remember 800 call-in number; provide various traffic schematics to Ethan.
- Recorded 14,093 visits to the Commission's website, www.dritbc.org.
- Issued 11 press releases/travel alerts for the month – the bulk for I-78.

DELAWARE RIVER JOINT TOLL BRIDGE COMMISSION

Meeting of May 20, 2013

**Operation Index
For
Community Affairs**

SUBJECT	DESCRIPTION	PAGE NUMBER
Community Affairs	Community Affairs Report April 2013	1-2

DELAWARE RIVER JOINT TOLL BRIDGE COMMISSION

Meeting of May 20, 2013

COMMUNITY AFFAIRS REPORT

April 2013

The following activities under the general heading of community relations/governmental affairs were recently initiated, accomplished or performed:

- ❖ **Easton-Phillipsburg Toll Bridge**
 - Refined the compilation of historical photos for inclusion in a photo montage on the history of the bridge for inclusion in the project web site and for use in a project PowerPoint presentation.
 - Completed the compilation of an upgrade to the project's potential stakeholder list to supplement the contractor's responsibilities in this regard.
 - Attended the construction contract bid opening meeting for the project.
- ❖ **Lumberville-Raven Rock Toll-Supported Pedestrian Bridge Rehabilitation**
 - Continued to coordinate Commission response to the operator of the Black Bass Hotel regarding his request to enter into negotiations for a long-term lease for the bridge's former gatekeeper building.
 - Participated in project progress meetings.
 - Responded to several inquiries from the public regarding aspects of the project.
 - Supervised the drafting, production and distribution of a project progress letter to stakeholders.
 - Began preparations for rededication ceremonies to mark the completion of the project.
- ❖ **Alerted Commission staff to plans by competing gun issue advocacy groups to conduct demonstration activities on or near the Lower Trenton TSB and participated in planning meetings to address Commission responses to those plans. Provided background material as to the intentions of the groups and advised as to changes in the intentions of the organizations involved.**
- ❖ **Delaware Water Gap Maintenance Garage Expansion Project**
 - Participated in project progress meetings.
- ❖ **New Hope-Lambertville Toll Bridge Approaches Project**
 - Participated in project kick-off meeting.
- ❖ **I-78 Toll Bridge PA Approach Paving Improvements**
 - Continued management of a Twitter information feed for interested bridge patrons. This included a special notice of an unusual "drive time" lane restriction and an overnight closure of the Welcome Center Parking areas. The Twitter program for this project now has over 700 followers who regularly receive timely information about lane closures, safety messages and construction activities.
 - Participated in project progress meetings.

DELAWARE RIVER JOINT TOLL BRIDGE COMMISSION
Meeting of May 20, 2013

- ❖ Riverton-Belvidere TSB Water Street Improvements
 - Completed successful Commission response to project issues regarding lighting and drainage and communicated the resolution of these items to the Mayor and members of the Belvidere Council. Also, informed same of the upcoming plans for the replacement of the roof structure for the maintenance building on site.
 - Assisted the Municipal Clerk in initiating the process for approving use of the bridge facility in connection with an event planned by the local VFW chapter.
 - Responded to an inquiry from the public regarding closing aspects of the project.
 - Attended the bid opening for the maintenance building roof replacement project.
- ❖ I-95/Scudder Falls Bridge Improvement Project
 - Continued to assist project staff in consulting with the Lower Makefield Township manager regarding a potential issue involving access to private property to conduct necessary core drilling sampling for the project.
 - Attended a briefing presentation on the project for the Delaware & Raritan Canal Commission and discussed the project with Commission members.
- ❖ Conducted a follow-up response to inquiries from the Morrisville, PA Environmental Advisory regarding the DRJTBC response to an earlier inquiry regarding commission property at the corner of Bridge Street and Delmorr Avenue.
- ❖ Continued refinement of the design of signage to potentially be used to discourage self-destructive jumpers from Commission bridges.
- ❖ Produced updated fact sheets for four Commission projects to be used as informational handouts at the Commission's E-ZPass table at the Lambertville Shad Fest
- ❖ Produced an informational insert for the E-ZPass trifold brochure announcing the addition of a new addition to the network of states and agencies honoring E-ZPass
- ❖ Assisted in Commission response to complaints from residents along the Route 1 approach to the Trenton-Morrisville Toll Bridge regarding the removal of tree overgrowth obscuring directional signage.
- ❖ Participated in presentation ceremonies to deliver artifacts from the Lumberville-Raven Rock TSPB rehabilitation project to the Roebling Museum in Florence, NJ
- ❖ Processed a records request form from a vendor in connection with a Commission bridge project.

DELAWARE RIVER JOINT TOLL BRIDGE COMMISSION

Meeting of May 20, 2013

ENGINEERING

The following Pages reflect the reports on those items assigned to the Engineering Department. Each item is reported separately and page numbered accordingly.

DELAWARE RIVER JOINT TOLL BRIDGE COMMISSION

Meeting of May 20, 2013

FACILITY	PM/PAM	CONTRACT DESCRIPTION	PAGE NO.
Scudder Falls Toll Supported Bridge	KMS/RWL	Improvement Project <ul style="list-style-type: none"> Preliminary Engineering and Environmental Documentation for I-95/Scudder Falls Toll Supported Bridge – Study, Contract C-393A Financial / Legal Advisory Services for a P3 for Scudder Falls Bridge Replacement Project – Study, Contract C-393G-1R Capital Program Management Consultant (CPMC) & Design Management Consultant (DMC) Services for the I-95/Scudder Falls Bridge Improvement Project <ul style="list-style-type: none"> CPMC Services – Year 2012, C-502A-1G CPMC Services – Year 2013, C-502A-1H DMC Tolling Strategy, Development & Implementation Support Services, C-502A-2C DMC Advanced Engineering Support Services for Priority Items of Work, C-502A-2D Staff Augmentation – P3 Support Services, C-502A-2E 	1-4
New Hope-Lambertville Toll Bridge	VMF/WCB/KMS	Pavement Rehabilitation & Approach Bridges Repairs <ul style="list-style-type: none"> Design, C-543A Construction Management/Construction Inspection, CM-506A Construction, T-543A 	4-5
Lumberville-Raven Rock Toll Supported Bridge	CTH/RWL	Rehabilitation & Retaining Wall Reconstruction <ul style="list-style-type: none"> Design, C-443A 	5
	VMF/CLR/KMS	<ul style="list-style-type: none"> Construction Management, CM-443A Construction, TS-443A 	5-6
I-78 Toll Bridge	WMC/RWL	I-78 PA Approach Paving Improvements <ul style="list-style-type: none"> Concept Study, Preliminary Design, Final Design and Post Design, C-506A 	6
	VMF/CLR/KMS	<ul style="list-style-type: none"> Construction Management, CM-506A Construction, T-506A Emergency Inspection Services, C-599B-2 	6-7
	RJZ/RWL	I-78 Rock Slide Mitigation <ul style="list-style-type: none"> Long Term, C-454B-5 	8

Notes:

Facilities are listed South to North

The first set of initials indicate the Project Manager and the second set of initial indicate the Program Area Manager

Project Manager Legend

WMC – M. Cane
 VMF – V. Fischer
 CTH – C. Harney
 RSL – R. Luciani
 RJZ – R. Zakharia

Program Area Manager Legend

RWL – R. Little
 KMS – K. Skeels
 CAS – C. Stracciolini
 RLR – R. Rash
 CLR – C. Rood

DELAWARE RIVER JOINT TOLL BRIDGE COMMISSION

Meeting of May 20, 2013

FACILITY	PM/PAM	CONTRACT DESCRIPTION	PAGE NO.
Easton-Phillipsburg Toll Bridge	CTH/RWL	Rehabilitation Scoping/Concept Study <ul style="list-style-type: none"> Preliminary, Final, and Post Design Services, C-437B Construction Management, CM-437A Construction, T-437A 	8-9
Riverton-Belvidere Toll Supported Bridge	VMF/CLR/KMS	Maintenance Garage Roof Replacement <ul style="list-style-type: none"> Design, C-599A-4 	9
Delaware Water Gap Toll Bridge	RJZ/RWL	Maintenance Garage Expansion – PA Assignment <ul style="list-style-type: none"> Final, Post and Construction Support Services, C-474A Construction Management/Construction Inspection, CM-474A Construction, T-474A Code Compliance Plan Review and Inspections, C-598A-3 CM/CI Services Staff Support, C-598A-4 	10-11
	VMF/CLR/KMS	River Road Improvements <ul style="list-style-type: none"> Design, C-599A-1 Construction, T-624A 	11-12
	CLR/CAS	Open Road Tolling (ORT) Construction <ul style="list-style-type: none"> Construction Management/Construction Inspection, CM-440B 	12
Multiple Facilities and/or Commission-Wide	WMC/RWL	Electronic Surveillance/ Detection System <ul style="list-style-type: none"> Design-Build-Maintain, DB-396A RFP development, Procurement Support and Transition Services, C-539A-5 BSS Maintenance Contract, DB-575A 	12-13
	CAS/RWL	Electronic Toll Collection <ul style="list-style-type: none"> In-Lane Toll System Design-Build-Maintain, DB-427C Customer Service Center/ Violation Processing Center Design-Build-Operate-Maintain, DB-427D 	13-14

Notes:

Facilities are listed South to North

The first set of initials indicate the Project Manager and the second set of initial indicate the Program Area Manager

Project Manager Legend

WMC – M. Cane
 VMF – V. Fischer
 CTH – C. Harney

RSL – R. Luciani
 RJZ – R. Zakharina

Program Area Manager Legend

RWL – R. Little
 KMS – K. Skeels
 CAS – C. Stracciolini

RLR – R. Rash
 CLR – C. Road

DELAWARE RIVER JOINT TOLL BRIDGE COMMISSION

Meeting of May 20, 2013

FACILITY	PM/PAM	CONTRACT DESCRIPTION	PAGE NO.
	RSL/CAS	Electronic Toll Collection / Tolling Task Order Consultant <ul style="list-style-type: none"> Traffic Count Program Design, C-538A-8 	14
	CAS/RWL	<ul style="list-style-type: none"> In-Lane Toll System and CSC/VPC Procurements, C-538A-9 	14-15
Multiple Facilities and/or Commission-Wide	RJZ/RWL	Facilities, District 1 <ul style="list-style-type: none"> Strategic Planning Study, C-454A-8 	15
	CTH/RWL	General Engineering Consultant Annual Inspections <ul style="list-style-type: none"> 2013 Toll Bridge Inspections & Interim Inspections for Load-Posted Bridges, C-07-11C 	16
	CAS/RWL	General Engineering Consultant Traffic Engineering <ul style="list-style-type: none"> 2012 Traffic Engineering Consultant, C-17-11 	16

Notes:

Facilities are listed South to North

The first set of initials indicate the Project Manager and the second set of initial indicate the Program Area Manager

Project Manager Legend

WMC – M. Cane
 VMF – V. Fischer
 CTH – C. Harney

RSL – R. Luciani
 RJZ – R. Zakaria

Program Area Manager Legend

RWL – R. Little
 KMS – K. Skeels
 CAS – C. Stracciolini

RLR – R. Rash
 CLR – C. Rood

DELAWARE RIVER JOINT TOLL BRIDGE COMMISSION

Meeting of May 20, 2013 PROJECT STATUS REPORT

PRELIMINARY ENGINEERING AND ENVIRONMENTAL DOCUMENTATION FOR I-95/SCUDDER FALLS TOLL SUPPORTED BRIDGE

STUDY Contract No. C-393A

On June 14, 2012 FHWA issued the NEPA decision a Finding of No Significant Impact (FONSI) for the I-95/Scudder Falls Bridge Improvement Project in Bucks County, Pennsylvania and Mercer County in New Jersey. This is a determination that the Proposed Action will have no significant impact on the human environment.

The Commission submitted a formal request for the Final approval of the project Point of Access Study Report on July 6, 2012. A conditional approval of this report was issued by NJDOT, PennDOT and FHWA in November 2011. This conditional approval permitted the circulation of the Addendum to the Environmental Assessment for public review in December 2011. Final approval of this document typically occurs after the NEPA decision for a project. On September 21st correspondence was received from PennDOT accepting the Final Point of Access Report for the I-95/Scudder Falls Bridge Improvement Project. NJDOT acceptance of the Final Point of Access Report was received via letter dated November 19, 2012. The PennDOT and NJDOT approval letters have been packaged with the Final Point of Access Report and submitted to FHWA – Pennsylvania Division for their final approval.

The final invoice for this contract has been submitted and the contract is in the process of being closed out.

FINANCIAL/LEGAL ADVISORY SERVICES FOR A P3 FOR SCUDDER FALLS BRIDGE REPLACEMENT PROJECT

STUDY Contract No. C-393G-1R

The Commission's Financial/Legal Advisory Services consultant KPMG/Nossaman, completed their analysis of the P3 project delivery method on schedule, and presented their preliminary findings to the Commission in November 2011. These findings are currently under review by the Commission with a final decision pending.

DELAWARE RIVER JOINT TOLL BRIDGE COMMISSION

Meeting of May 20, 2013 PROJECT STATUS REPORT

CAPITAL PROGRAM MANAGEMENT CONSULTANT (CPMC) & DESIGN MANAGEMENT CONSULTANT (DMC) SERVICES FOR THE I-95/SCUDDER FALLS BRIDGE IMPROVEMENT PROJECT

CPMC SERVICES – YEAR 2012 Task Order Assignment No. C-502A-1G

Capital Program Management Consultant (CPMC) Services and Design Management Consultant Services (DMC) for the SFB Project have continued through the 2012 year under this Task Order Assignment. The CPMC is continuing to support the Commission in its Capital Improvement Program by providing program management and project management services for various engineering and construction contracts. The DMC continues to support the Commission in advancing the Scudder Falls Bridge Improvement Project through to design and construction, including supporting the Commission through a traditional Design-Bid-Build procurement or a P3 procurement. The services include ongoing coordination efforts with the Transportation Agencies (FHWA, PennDOT and NJDOT) and development of the documentation (reports, agreements, etc.) that is necessary to advance the project.

CPMC services on this Task Order Assignment concluded in April 2013 and all work remaining to be performed in 2013 will be done under new Task Order Assignment C-502A-1H.

DMC Services continued through April and included agency coordination, public involvement support, continued development of the conceptual construction staging plans for the Project, and overall project management for the environmental permitting effort. This effort includes development of the grading and drainage plans associated with each construction stage for the work in PA. This is required for the Bucks County Soil Erosion Permit and the PADEP permit process. During this reporting period AECOM was scheduled to begin the soil borings and monitoring well installation work associated with the PA wetlands mitigation site but had to delay the start of the work pending resolution of issues with the property owner. Draft Memorandum of Agreements (MOAs) were forwarded to PennDOT and NJDOT for review and comment on April 4, 2013. A draft MOA was also prepared by AECOM that addresses the maintenance and operation of the Pedestrian/Bicycle Facility in New Jersey by the various effected agencies. The draft MOA was distributed to the various NJDEP agencies and NJDOT for review and comment on April 23, 2013. AECOM has also submitted an updated construction cost estimate for the project that is currently being reviewed by Engineering.

DELAWARE RIVER JOINT TOLL BRIDGE COMMISSION

Meeting of May 20, 2013 PROJECT STATUS REPORT

CPMC SERVICES – YEAR 2013 Task Order Assignment No. C-502A-1H

Capital Program Management Consultant (CPMC) Services are continuing in year 2013 under this Task Order Assignment. The CPMC is continuing to support the Commission in its Capital Improvement Program by providing program management and project management services for various engineering and construction contracts. CPMC Staff began work on this new Task Order Assignment in April 2013.

DMC TOLLING STRATEGY DEVELOPMENT & IMPLEMENTATION SUPPORT SERVICES

Task Order Assignment No. C-502A-2C

The federal transportation funding reauthorization (MAP-21). Signed into law on July 6, 2012, eliminates the need for a tolling agreement. In a letter dated September 21, 2012 the FHWA confirmed that a tolling agreement is not required for the project. With the issuance of the FONSI for the Project, all work under this Task Order Assignment is complete. The final invoice for this assignment has been submitted and this Task Order Assignment is now in the process of being closed out.

DMC ADVANCED ENGINEERING SERVICES FOR PRIORITY ITEMS OF WORK

Task Order Assignment No. C-502A-2D

Environmental Permitting - During the month of April AECOM developed responses to additional questions from NJDEP in conjunction with the NJDEP permit application package that was submitted back in January of this year. Addendum No. 2 to the NJ Stormwater Management Report was submitted to NJDEP on April 26, 2013. Work was ongoing throughout the month with the development of the Delaware & Raritan Canal Commission (D&RCC) Certificate of Approval plans and back-up report. Engineering's comments on the draft plans and permit application package were returned to AECOM for incorporation into the final application package. Engineering is also reviewing the New Jersey wetlands and riparian zone mitigation options recommendation memo prepared by AECOM. A project presentation was made at the April 17, 2013 D&RCC Meeting. The presentation was made as a precursor to the permit application submission planned for May.

DELAWARE RIVER JOINT TOLL BRIDGE COMMISSION

Meeting of May 20, 2013 PROJECT STATUS REPORT

AECOM continued to perform **Public Involvement** activities, including monitoring of the Project Hotline and Project Website.

The ROW impacts have been reassessed for the proposed project, based on the final grading and drainage plans that have been developed. The draft easement language for the existing NJDEP – Green Acres easements over the D&R Canal was submitted to NJDEP – Green Acres on April 24, 2013 for review and comment. The DRJTBC is planning on expanding the existing easement over the canal as part of the NJDEP – Green Acres property diversion process. The process for moving forward with the ROW acquisition process, including property owner outreach and Legal Counsel involvement, is currently being planned internally by Commission staff. ROW efforts beyond those of AECOM and Commission staff are on hold pending a GO/NO-GO decision on the P3 procurement process.

STAFF AUGMENTATION – P3 SUPPORT SERVICES Task Order Assignment No. C-502A-2E

AECOM was issued a Notice to Proceed on the Task Order Agreement (TOA) on November 16, 2010. Under this TOA, AECOM provided professional services, in a staff augmentation format, in support of the P3 Financial/Legal Advisory Services contract C-393G-1R. Efforts on this task order assignment are currently on hold pending a GO/NO-GO decision on the P3 procurement process.

NEW HOPE-LAMBERTVILLE TOLL BRIDGE PAVEMENT REHABILITATION & APPROACH BRIDGES REPAIRS

DESIGN Contract No. C-543A

Cherry, Weber and Associate's (CWA) Final Design Plans and Specifications for Contract T-543A were received by the Commission and the contract let for bidding on January 29. CWA reviewed the six (6) bids received and recommended awarding the construction contract to the low bidder James D. Morrissey, Inc. (JDM). CWA prepared conformed plans and specifications and has started the post design phase of their contract. CWA has started the submittal review process and participated in a foamed asphalt field meeting on April 19, 2013

DELAWARE RIVER JOINT TOLL BRIDGE COMMISSION

Meeting of May 20, 2013 PROJECT STATUS REPORT

CONSTRUCTION MANAGEMENT / CONSTRUCTION INSPECTION Contract No. CM-506A

Johnson, Mirmiran & Thompson, Inc. (JMT) was awarded Contract T-543A at the Commission's April meeting. JMT's Notice of Award/Limited Notice to Proceed was issued on April 29th effective April 30th. A Kick-Off Meeting with JMT was held April 30.

CONSTRUCTION Contract No. T-543A

James D. Morrissey, Inc. (JDM) was awarded this construction contract at the Commission's March meeting and full Notice to Proceed was issued effective April 30, 2013. JDM participated in a scheduling conference held on April 2nd and has started the submittal process. JDM held a field meeting with their recycled asphalt subcontractor on April 19th and is currently setting up the field office facilities. The Contract Pre-Construction Meeting was held on April 30th.

LUMBERVILLE-RAVEN ROCK TOLL SUPPORTED BRIDGE REHABILITATION & RETAINING WALL RECONSTRUCTION

DESIGN Contract No. C-443A

The engineering design firm of Amman & Whitney (A&W) continues to provide post-design services until the construction phase of the project is complete.

CONSTRUCTION MANAGEMENT/CONSTRUCTION INSPECTION Contract No. CM-443A

STV Inc. as the CM/CI continues tracking RFIs, submittals, correspondence and coordinating the flow of information among the construction contractor, design engineer and the Commission. STV continues holding bi-weekly schedule update and progress meetings at the field office. STV has staffed the project for construction monitoring commensurate with the field work which includes, cleaning and painting of the bridge structure, concrete bridge deck and steel repairs, retaining wall construction and lighting upgrades. A CM/CI Status meeting was held in April.

DELAWARE RIVER JOINT TOLL BRIDGE COMMISSION

Meeting of May 20, 2013 PROJECT STATUS REPORT

CONSTRUCTION Contract No. TS-443A

James J. Anderson Construction Company, Inc. (JJA) was awarded this construction contract at the Commission's November 19, 2012 meeting. JJA closed the pedestrian bridge as scheduled on March 4, 2013 and has completed the bridge structure cleaning and painting operation. The majority of the steel repair work and masonry repointing is complete. JJA has completed the submission of shop drawings and the majority of RFIs (requests for information). The Delaware Canal tow path was closed in early March for the construction of a new retaining wall behind the Commission's bridge house along the canal. The drilling/pouring of the support caissons and reinforced concrete wall are complete. The installation of the stone veneer for this retaining wall has begun. The bridge is on schedule to re-open in early-May.

I-78 TOLL BRIDGE PA APPROACH PAVING IMPROVEMENTS

CONCEPT STUDY, PRELIMINARY DESIGN, FINAL DESIGN AND POST DESIGN Contract No. C-506A

KS Engineers continues to provide post design services in support of the construction phase of the project. Activities included addressing requests for information and review / approval of construction contractor submissions.

CONSTRUCTION MANAGEMENT / CONSTRUCTION INSPECTION Contract No. CM-506A

Johnson, Mirmiran & Thompson, Inc. (JMT) as the CM/CI, continues tracking RFIs, submittals, correspondence and coordinating the flow of information among the construction contractor, design engineer and the Commission. JMT has staffed the project for construction monitoring commensurate with the field work. JMT continues inspecting the contractors remaining drilling and grouting activities and the remaining rock slide mitigation work. The inspection of the roadway dowel bar retrofits and structural spall repairs at overpass bridges is complete. JMT is overseeing the reconstruction of the main line roadway pavement transition areas and the upgrades/repairs to the Welcome Center parking area and coordinating lane closures and State Police assistance with lane restrictions. JMT continues holding bi-weekly schedule update and progress meetings and as needed pre-activity meetings for major work activities of the contract.

DELAWARE RIVER JOINT TOLL BRIDGE COMMISSION

Meeting of May 20, 2013 PROJECT STATUS REPORT

CONSTRUCTION Contract No. T-506A

HRI Infrastructure of State College, PA has completed the drilling/grouting for roadway slab stabilization and installing the roadway dowel bar retrofits, structural spall repairs and concrete patching. Full depth concrete slab replacements and work on the rock slide mitigation is nearing completion. HRI is nearing completion on the eight (8) mainline roadway transition areas with full depth asphalt replacement and work in the PA Welcome Center parking area. HRI continues participating in the bi-weekly schedule update and progress meetings and as needed pre-activity meetings for major work activities of the contract. The Commission is working with HRI to provide extended double-lane closure hours in an effort to assist HRI in their completion of the full-depth transition pavement replacements, in a cooperative effort to maintain the substantial completion date. HRI began and continues with the placement of the first lift of overlay asphalt. HRI continues to work with a commitment toward meeting the substantial completion date of May 23, 2013.

I-78 TOLL BRIDGE PA APPROACH PAVING IMPROVEMENTS – EMERGENCY INSPECTION SERVICES

Task Order Assignment No. C-599B-2

Under this Task Order Assignment (TOA) the Consultant, Greenman-Pedersen, Inc. (GPI) provided emergency inspection services of the Commission's facilities and property that was damaged by fire. These facilities which include the Commission's Restricted Access Ramp Structure S-15954 (over the PA Welcome Center Employee Access Roadway) were exposed to a fire of the I-78 TB PA Approach Paving Improvements contractor's stored materials and equipment on October 23, 2012. The final summary report of the findings from this inspection was submitted and accepted by Commission Staff. All work associated with this TOA has been completed. GPI is preparing their final invoice for submission and once submitted and approved this TOA will be closed out.

DELAWARE RIVER JOINT TOLL BRIDGE COMMISSION

Meeting of May 20, 2013 PROJECT STATUS REPORT

I-78 ROCK SLIDE MITIGATION – LONG TERM

FINAL DESIGN, POST DESIGN AND CONSTRUCTION SUPPORT SERVICES Task Order Assignment No. C-454B-5

This Task Order Assignment is for Final Design, Post Design and Construction Support Services as related to mitigation work to provide long term improvements to the stability of the rock face along I-78. The Task Order Assignment also includes monthly reviews of the Inspection Reports as prepared by the Commission staff and conducts bi-monthly site visits of the rock slopes at the I-78 East Bound Pennsylvania approach.

A Final Submission of bid documents for this rock face work was received on April 24, 2012 and was shared with KS Engineers for incorporation into the I-78 Toll Bridge – PA Approach Paving Improvements Contract Bid Documents Contract T-506A. These plans and specifications are now part of Contract T-506A prepared by KSE and awarded to HRI at the July Commission Meeting. The Consultant is currently providing post-design services, reviewing the Contractor's submissions, attending project progress meetings, responding to Requests for Information and conducting site visits to review the construction progress. The Consultant participated in a partial final walk through inspection of the rock slope work.

EASTON-PHILLIPSBURG TOLL BRIDGE REHABILITATION, PRELIMINARY, FINAL & POST DESIGN SERVICES

DESIGN Contract No. C-437B

This project was awarded to Parsons Brinckerhoff (PB) at the February 28, 2012 Commission meeting. PB provided the Commission their final design submission on February 22, 2013. Construction bids were received on April 11, 2013. PB has been providing post-design services and will be participating in kick-off and partnering meetings during the month of May 2013.

DELAWARE RIVER JOINT TOLL BRIDGE COMMISSION

Meeting of May 20, 2013 PROJECT STATUS REPORT

CONSTRUCTION MANAGEMENT Contract No. CM-437A

This project was awarded to Greenman-Pedersen, Inc (GPI) at the April 29, 2013 Commission meeting. GPI was provided with a Notice of Award the following day and is scheduled to participate in a scheduling conference, kick-off and partnering meetings during the month of May 2013.

CONSTRUCTION Contract No. T-437A

J.D. Eckman, Inc. (JDE) was awarded this construction contract at the Commission's April 29, 2013 meeting. JDE was provided a Notice of Award/Limited Notice-to-Proceed the following day. JDE is scheduled to participate in a scheduling conference, kick-off and partnering meetings during the month of May 2013.

RIVERTON-BELVIDERE TOLL-SUPPORTED BRIDGE, MAINTENANCE GARAGE ROOF REPLACEMENT

DESIGN Task Order Assignment No. C-599A-4

Under this task order assignment the Consultant, McCormick Taylor (MT), is developing final design plans and specifications for the replacement of the existing corrugated transite roof panels on the Riverton-Belvidere Toll-Supported Bridge Maintenance Garage on Water Street in Belvidere, NJ with a coated steel-paneled roof system as recommended in their earlier study from Task Order Assignment C-599A-2. MT submitted the final design plans and specifications on March 15th and the project was advertised for bid on April 1, 2013. MT participated in the non-mandatory pre-bid meeting on April 10, 2013 at the maintenance garage. MT has developed Addendum No. 1 in response to contractor inquiries and the Addendum was posted on the Commission's website on April 23, 2013. A public bid opening for the roof replacement was held on April 30, 2013. One bid was received and is under evaluation.

DELAWARE RIVER JOINT TOLL BRIDGE COMMISSION

Meeting of May 20, 2013 PROJECT STATUS REPORT

DELAWARE WATER GAP MAINTENANCE GARAGE EXPANSION

FINAL DESIGN, POST DESIGN AND CONSTRUCTION SUPPORT SERVICES Contract No. C-474A

Final Bid Documents were submitted by the Design Consultant, Brinjac, on October 4th. The contract was publically advertised for bids on October 9th. Bids were publically opened on November 7, 2012. The Design Consultant reviewed the bids received and a Construction Contract Award was made to the lowest responsible bidder at the Commission's November monthly meeting.

The Consultant attended the Construction Contract Kick-Off Meeting on December 7, 2012 and is currently reviewing the Contractor's submissions, responding to requests for information, and attending Project Progress Meetings.

CONSTRUCTION MANAGEMENT / CONSTRUCTION INSPECTION Contract No. CM-474A

STV, Inc. was awarded Contract CM-474A at the Commission April Meeting. All pre-requisites to the Contract execution were received from the Consultant and a Notice to Proceed was issued effective April 15, 2003. The Consultant attended construction Progress Meeting No. 8 on April 17, 2013 and started tracking Requests for Information, submittals, preparing minutes of meetings, review and process payment applications, among other administrative contract requirements. STV is currently providing construction inspection services of all construction activities to confirm contractor's compliance with the Contract Documents.

CONSTRUCTION Contract T-474A

Bracy Contracting, Inc. was issued a Notice of Award on November 20, 2012, and a Notice to Proceed for this project was issued effective December 3, 2012. Bracy continues to provide contract required submittals for review by the Consultant.

The construction work is proceeding on schedule. Footings and foundations are complete. Steel erection, roof deck, and exterior masonry walls have been completed. Electrical and plumbing rough-ins are in progress. All long lead items have been ordered and expected to be received on schedule.

DELAWARE RIVER JOINT TOLL BRIDGE COMMISSION

Meeting of May 20, 2013 PROJECT STATUS REPORT

CODE COMPLIANCE PLAN REVIEW AND INSPECTIONS Task Order Assignment No. C-598A-3

This Task Order Assignment is for a third party building code compliance plan review and inspection for the Delaware Water Gap Maintenance Garage Expansion Project. A notice to Proceed was issued to Burns Engineering, Inc. effective June 28, 2012. Comments on the Pre-Final Code Compliance Review report was presented to Brinjac Engineering and incorporated into the Final Design.

The Consultant completed its code compliance review of the conformed contract documents on November 15, 2012, attended the Construction Contract Kick-Off Meeting on December 7, 2012 and is currently providing code compliance inspections.

CM/CI SERVICES STAFF SUPPORT Task Order Assignment No. C-598A-4

Under this task order assignment Burns Engineering, Inc., continues to provide schedule update reviews assisting the construction management Consultant for Contract T-474A Delaware Water Gap Maintenance Garage Expansion. Burns' Notice to Proceed was issued effective January 28, 2013.

DELAWARE WATER GAP TOLL BRIDGE RIVER ROAD IMPROVEMENTS

DESIGN Task Order Assignment No. C-599A-1

Under this task order assignment the Consultant, McCormick Taylor (MT), designed roadway improvements for a 650-foot section of River Road adjacent to the New Jersey approach to the Delaware Water Gap/I-80 river bridge. The final plans/specification submission was provided on February 5th and advertised for bids on February 7, 2013. MT reviewed the four (4) bids that were received and opened on March 7, 2013 and recommended award to the low bidder, Sparwick Contracting, Inc. MT has conformed the plans and specifications and participated in the preconstruction meeting on April 16, 2013. MT has their post design phase of their contract and has begun reviewing submittals and shop drawings.

DELAWARE RIVER JOINT TOLL BRIDGE COMMISSION

Meeting of May 20, 2013 PROJECT STATUS REPORT

CONSTRUCTION Contract No. T-624A

Sparwick Contracting, Inc. was awarded the construction contract for the River Road Improvements at the Commission's March meeting and given the Notice to Proceed effective April 24, 2013. A scheduling conference was held on March 27th and a pre-construction meeting on April 16, 2013. Sparwick mobilized to the project site in late April, set up the field trailer and has started submitting shop drawings and material submittals.

DELAWARE WATER GAP TOLL BRIDGE (I-80) OPEN ROAD TOLLING (ORT) CONSTRUCTION

CONSTRUCTION MANAGEMENT/CONSTRUCTION INSPECTION Contract No. CM-440B

All work is complete. The Consultant's final invoice is being processed and once paid the Close Out Modification will be done and the project closed out.

ELECTRONIC SURVEILLANCE / DETECTION SYSTEM

DESIGN-BUILD-MAINTAIN PROJECT Contract No. DB-396A

Mass Electric Construction Co. continues to support the Maintenance phase of the project under the direction of the Commission's Electronic Security and Surveillance Staff which operates the system from the Primary Control Center located at the New Jersey State Police's Regional Operation and Information Center (ROIC) in West Trenton, NJ.

RFP DEVELOPMENT, PROCUREMENT SUPPORT AND TRANSITION SERVICES Task Order Assignment No. C-539A-5

URS Corporation is currently supporting the Commission's Technical Evaluation Committee in reviewing the Technical Proposal as submitted by Schneider Electric in response to the Commission's Request for Proposal (RFP). This contract is to procure a vendor to provide maintenance and other related services for the Electronic Surveillance / Detection System (ESS) at the conclusion of the Maintenance phase of the contract between the Commission and Mass Electric Construction Co. (MECC).

DELAWARE RIVER JOINT TOLL BRIDGE COMMISSION

Meeting of May 20, 2013 PROJECT STATUS REPORT

ESS MAINTENANCE CONTRACT Contract No. DB-575A

On April 24, 2013, after public advertising, the Commission took receipt of one (1) proposal from Schneider Electric of Horsham, PA to provide preventative and corrective maintenance for all components that comprise its existing Electronic Surveillance / Detection System (ESS). The services include the lease of a wide area network that interconnects the various sites, and technology updates to servers and workstations of the ESS for a period of three (3) years, with two (2) additional one (1) year options.

The proposal is currently under review by Commission staff.

ELECTRONIC TOLL COLLECTION SYSTEM DESIGN-BUILD Contract No. DB-427

In-Lane Toll System Design-Build-Maintain Project TO-427C

Xerox continues to perform preventative maintenance for the electronic toll collection system and violation enforcement system.

Xerox is preparing the annual ORT System Certification. Xerox submitted a cost proposal for the replacement of treadle frames in the conventional toll lanes at the I-78 Toll Bridge (lanes 2 & 3), the Delaware Water Gap Toll Bridge (lanes 5, 6 and 7) and a repair of a treadle frame at the I-78 Toll Bridge (lane 4). The cost proposal is under review by Commission Staff and if found acceptable will be submitted at the May 2013 Commission Meeting.

Xerox submitted the 2013 ETC spare parts/consumable quotation. A resolution to purchase the spare parts was passed at the April 2013 Commission Meeting. Commission Staff will prepare and issue a purchase order to Xerox.

Xerox responded to the I-78 toll facility lightning strike. In addition to the damage to the Commission facility, the lightning strike destroyed both overhead laser scanners installed in the Open Road Tolling (ORT) lanes making the lanes operate in a degraded mode. With an ORT lane closure provided by the Commission Maintenance Department, Xerox replaced the damaged laser scanners with two (2) units from the spare parts inventory and returned the lanes to full functioning operations.

DELAWARE RIVER JOINT TOLL BRIDGE COMMISSION

Meeting of May 20, 2013 PROJECT STATUS REPORT

Customer Service Center/Violation Processing Center Design-Build-Operate-Maintain Project TO-427D

Customer Service Center (CSC) operation bi-weekly conference calls with Commission staff and ETC continue so all parties may discuss on-going and upcoming efforts, as well as issues and their resolution. Commission staff has prepared a letter to ETC informing them that a resolution was passed at the April 2013 Commission Meeting exercising the second, 1-year option that is included in the agreement. This option will allow for the continued operation of the CSC/VPC from June 1, 2013 to May 31, 2014.

Commission Staff is working with Commission PA General Counsel on draft legislation being prepared by the Pennsylvania Turnpike Commission that provides the ability to toll agencies to request PennDOT to suspend an individual's vehicle registration for non-payment of tolls. The owner of the vehicle would have to have six or more toll violations or owe more than \$500 in outstanding tolls, fees or costs, looking back a maximum of three years. We are requesting that language be added to the definition of tolling entity to ensure that the Commission falls under the definition.

ELECTRONIC TOLL COLLECTION / TOLLING TASK ORDER CONSULTANT

TRAFFIC COUNT PROGRAM DESIGN Task Order Assignment No. C-538A-8

The Commission's Purchasing Department is working with the Commonwealth of Pennsylvania Department of General Services to determine if the equipment needed by the Commission can be acquired through the State's system. A new contract that was procured by the Commonwealth of Pennsylvania may include all needed equipment for the installation of a count station at each Commission facility. The list of equipment from the Commonwealth's contract was submitted to STV Inc. for review.

IN-LANE TOLL SYSTEM AND CSC/VPC PROCUREMENTS Task Order Assignment No. C-538A-9

Commission Staff received price proposals from the Pennsylvania Turnpike Commission's (PTC) and New Jersey Turnpike Authority (NJTA) for the potential transition into the Pennsylvania or New Jersey Regional CSC/VPC. The proposals were reviewed by Commission Staff. Commission Staff has provided a list of clarification questions to each agency and has scheduled meetings that will allow for an exchange of information in order to fine tune the proposals.

DELAWARE RIVER JOINT TOLL BRIDGE COMMISSION

Meeting of May 20, 2013 PROJECT STATUS REPORT

DISTRICT I FACILITIES STRATEGIC PLANNING

STUDY

Task Order Assignment No. C-454A-8

This Task Order Assignment is for a concept study for District 1 facilities strategic planning for needed improvements. The purpose of this assignment is to provide the Commission with guidance for future facilities projects in order to account for administrative, operation and maintenance projected needs.

The Concept Study Report will also provide the framework for a subsequent study in greater detail with focus on specific space requirements and potential building space improvement options for addressing those needs.

A Final Draft Presentation was submitted by the Consultant and presented to the Commission Senior Staff on May 7, 2012. Until such time as the strategic plan is discussed with the Commissioners and finalized, only the first phase of improvements to address building system deficiencies at the Trenton-Morrisville Administration Building will be initiated.

DELAWARE RIVER JOINT TOLL BRIDGE COMMISSION

Meeting of May 20, 2013 PROJECT STATUS REPORT

GENERAL ENGINEERING CONSULTANT (GEC) ANNUAL INSPECTIONS

2013 TOLL BRIDGE INSPECTIONS & INTERIM INSPECTIONS FOR LOAD- POSTED BRIDGES Assignment C-07-11C

TranSystems (TS) was provided with Notice to Proceed for the 2013 inspections on March 28, 2013. Interim inspections of the load-posted (toll-supported) bridges began March 28. Inspections have been completed at Riverton – Belvidere, Lower Trenton, Calhoun Street, Washington Crossing and Centre Bridge - Stockton Toll Supported Bridges. In addition, TS completed the interim inspection at the New Hope - Lambertville Toll Supported Bridge on April 18, a day after an overweight truck crossing shut down the bridge for approximately 5 hours. No damage from the crossing was found. Uhlerstown – Frenchtown and Riegelsville Toll Supported Bridges are scheduled to be inspected during the first week of May.

Toll Bridge facility inspections are expected to begin in early May and continue through early July, weather permitting. TS will coordinate lane closings for inspections with the upcoming T-543A New Hope-Lambertville Toll Bridge Pavement Rehabilitation and Approach Bridges Repair and T-624A Delaware Water Gap River Road Improvements contract. TS will be required to update the PennDOT BMS system for each of the scheduled bridges within 30 days of the completion of the field inspection of each bridge.

Additional work added to this year's annual inspection includes interim inspection of the load-posted bridges as per PennDOT requirements and additional efforts to perform sign retroreflectivity testing at the Toll Bridge and I-95/Scudder Falls facilities. Sign retroreflectivity testing will take place over three nights and has been added to the GEC scope due to recent updates to the Manual on Uniform Traffic Control Devices (MUTCD).

Facilities inspections have been tentatively scheduled for mid-July in Districts 1, 2 & 3. Sign retroreflectivity testing has been tentatively scheduled for the Toll Bridges and I-95/Scudder Falls in mid to late September.

GENERAL ENGINEERING CONSULTANT TRAFFIC ENGINEERING YEAR 2012 TRAFFIC ENGINEERING CONSULTANT Assignment C-17-11

There is no activity to report on this contract. Annual Report update activities will commence in late summer.

DELAWARE RIVER JOINT TOLL BRIDGE COMMISSION

Meeting of May 20, 2013

OPERATIONS

The following Pages reflect the reports on those items assigned to the Operations Department. Each item is reported separately and page numbered accordingly.

DELAWARE RIVER JOINT TOLL BRIDGE COMMISSION

Meeting of May 20th 2013

**Operation Report Index
For
Department of Security, Safety & Training**

SUBJECT	DESCRIPTION	PAGE NUMBER
Department of Security, Safety & Training	Month of April Status Reports	1-3

DELAWARE RIVER JOINT TOLL BRIDGE COMMISSION

Meeting of May 20th, 2013

April

April 2nd Attended meeting with Pennsylvania State Police in reference to I-78 project issues.

April 11th Attended the DRJTBC Staff meeting at the New Hope facility.

April 11th Attended the I-78 Progress Meeting at the Easton Pa construction facility.

April 16th conducted training for Suicide Prevention and Active shooter at the Delaware Water Gap facility.

April 18th Attended and facilitated the Workplace Safety Meeting at the Trenton Morrisville facility and audits of the Toll supported Bridge Shelters.

April 19th Conducted the Toll Supported Bridge Officer and OIC training class at the New Hope Facility, on suicide prevention and active shooter.

April 19th Attended the DRJTBC Green Team meeting at the New Hope facility.

April 22nd Attended a CPA/CGOBC anticipated Rally to be conducted at the Lower Trenton Bridge on May 11th at the T/M facility.

April 24th Attended the I-78 Progress meeting at the Easton Pa construction facility.

April 26th Meeting with State Police agencies at the Delaware Water Gap facility on construction projects slated for May.

April 29th conducted the position of foreman Pre- Test review at the Trenton Morrisville training room facility.

April 30th conducted training for suicide Prevention and Active Shooter at the Delaware Water Gap facility.

April 30th conducted training for suicide Prevention and Active Shooter at the Milford Montague facility.

DELAWARE RIVER JOINT TOLL BRIDGE COMMISSION

Meeting of May 20th, 2013

During the month of April 2013; State Police (via state police liaisons coverage) were requested for details on (67) different Traffic/Construction/Events. The request were scheduled, supplied and verified, there were (6) scheduled and cancelled events. During the month interaction between both State Police Agencies and our Project Managers from the engineering Department on ongoing construction projects throughout the commission.

The SST department coordinated with the ESS department and several local and state police agencies on active investigations and request for video footage in relation to criminal activity at or near our bridges.

April 2013

Bridges	N/R Accidents		Traffic Accidents		Motorist Assists		Other	
	NJ	PA	NJ	PA	NJ	PA	NJ	PA
Milford-Montague 40	0	0	2	0	0	0	4	0
Delaware Water Gap 41	0	1	0	0	4	0	12	0
Portland Pedestrian 42	0	0	0	0	0	0	0	0
Portland-Columbia 43	0	0	1	0	0	1	10	0
Riverton – Belvidere 44	0	0	1	0	0	0	6	0
Rt 22 EP 45	0	2	2	0	0	2	14	0
Northampton St 46	0	0	1	0	0	0	35	0
I-78 47	0	2	11	0	23	0	77	10
Riegelsville 48	0	0	0	0	0	0	1	0
Upper Black Eddy-Milford 49	0	0	0	0	0	0	8	0
Uhlerstown Frenchtown 50	0	0	1	0	0	0	1	0
Lambertville-Raven Rock 51	0	0	0	0	0	0	0	0
Centre Bridge Stockton 52	0	0	0	0	0	0	7	0
New Hope-Lambertville Toll 53	0	0	0	0	1	0	1	0
New Hope Lambertville 54	0	0	0	0	0	0	24	0
Washington Crossing 55	0	0	0	0	0	0	2	1
Scudder Falls 56	0	1	11	2	2	1	12	0
Calhoun St 57	0	0	0	0	0	0	31	0
Lower Trenton 58	0	1	1	0	1	0	44	6
Morrisville Trenton 59	0	2	3	1	1	0	27	1

	Citations	Warnings	Security Checks
New Jersey State Police	57	61	922
Pennsylvania State Police	96	124	905

DELAWARE RIVER JOINT TOLL BRIDGE COMMISSION

Meeting of May 20, 2013

Operations Report Index

ELECTRONIC SECURITY AND SURVEILLANCE REPORT

Subject	Description	Page Numbers
Electronic Security and Surveillance	Status Report for the Month of April 2013	1 - 5

DELAWARE RIVER JOINT TOLL BRIDGE COMMISSION

Meeting of May 20, 2013

ELECTRONIC SECURITY AND SURVEILLANCE REPORT MONTH OF APRIL 2013

The below-listed items represent meetings, communications, tasks, and projects involving the Electronic Security and Surveillance Department:

Radio System

- On April 25, 2013, ESS personnel worked with radio technicians from the New Jersey State Police to troubleshoot a radio issue at the Primary Control Center.
- On April 26, 2013, ESS personnel worked with radio technicians from the New Jersey State Police to identify and correct a radio problem at the Secondary Control Center.
- ESS personnel also investigated various other DRJTBC radio issues both during and after normal working hours and continued updating the Cartegraph radio inventory database.

Access Control System

- On April 10, 2013, the I-78 Toll Bridge Maintenance Facility was struck by lightning. The lightning strike damaged and disabled the access control system. ESS personnel worked with Siemens over the next several days to repair the system.
- During the month of April 2013, ESS personnel worked with General Supply (Commission's lock smith) to address various lock issues within the Districts.
- In April 2013, ESS personnel created ID badges for new employees and consultants. Additionally, ESS continued making "Essential Employee" ID badges for current employees.
- During the month of April the ACS database was audited and the system was purged of invalid employee and contractor cards. Various other employee ACS rights were updated and/or changed at the request of supervisors.
- Various door alarms and ACS issues were addressed both during and after normal working hours.

DELAWARE RIVER JOINT TOLL BRIDGE COMMISSION

Meeting of May 20, 2013

ELECTRONIC SECURITY AND SURVEILLANCE REPORT MONTH OF APRIL 2013

ESS

- On April 17, 2013, ESS personnel met with MEC to review the pending ESS maintenance issues.
- On April 21, 2013, ESS personnel worked with MEC to troubleshoot the Primary Control Center going down. The Secondary Control Center at the New Hope-Lambertville Toll Bridge Facility was activated and utilized until the problem was repaired by Verizon on April 23, 2013.
- On April 29, 2013, ESS personnel started reviewing the ESS maintenance proposal submitted by Schneider Electric.
- During the month of April 2013, ESS personnel programmed various alarm notifications into the ESS system to alert the Primary Control Center of fire alarm activations and panic alarms. Various cameras were also programmed to work in conjunction with the aforementioned alarms and forced door alarms.
- During the month of April 2013, ESS personnel continued to work with URS and MEC to investigate various camera issues involving the I-78/611 wireless network.
- During the month of April ESS personnel reviewed the various changes and proposed updates to the new ESS Maintenance RFP and provided answers and documentation regarding various questions posed by potential bidders.
- ESS personnel reviewed and purged the ESS video storage database that contains copies of videos requested by DRJTBC personnel and outside agencies.
- ESS personnel worked during, and after normal working hours on numerous ESS issues and problems raised by Commission members.
- The ESS Primary Control Center continues to operate 24/7 and detected, documented, and assisted the District bridges with various emergencies, traffic, and security related incidents.
- During the month of April 2013, ESS personnel investigated and processed the following ten video requests:

DELAWARE RIVER JOINT TOLL BRIDGE COMMISSION

Meeting of May 20, 2013

ELECTRONIC SECURITY AND SURVEILLANCE REPORT MONTH OF APRIL 2013

1. On 04/01/13, District I requested a video search from the Lower Trenton Toll Supported Bridge regarding a missing employee.
2. On 04/01/13, the Falls Twp., PA Police Department requested a video search from the Trenton-Morrisville Toll Bridge regarding an armed robbery.
3. On 04/09/13, District II requested a video search from the Northampton Street Toll Supported Bridge regarding a hit and run accident.
4. On 04/11/13, the Phillipsburg, NJ Police Department requested a video search from the Northampton Street Toll Supported Bridge regarding a stabbing suspect that fled into Pennsylvania.
5. On 04/14/13, the Frenchtown, NJ Police Department requested a video search from the Ulherstown-Frenchtown Toll Supported Bridge regarding a motor vehicle accident.
6. On 04/17/13, ESS requested a video search from the I-78 Toll Bridge regarding lighting that struck the I-78 Maintenance Facility and damaged various operational systems such as the access control, cameras, etc.
7. On 04/19/13, the PA State Police requested a video search from the Riegelsville Toll Supported Bridge regarding an overweight crossing.
8. On 04/23/13, the PA State Police requested a video search from the I-78 Toll Bridge regarding a motor vehicle accident.
9. On 4/25/13, District I requested a video search from the Trenton-Morrisville Toll Bridge regarding a motor vehicle accident.
10. On 4/30/13, District II requested a video search from the Riegelsville Toll Supported Bridge regarding a motor vehicle accident.

DELAWARE RIVER JOINT TOLL BRIDGE COMMISSION

Meeting of May 20, 2013

ELECTRONIC SECURITY AND SURVEILLANCE REPORT MONTH OF APRIL 2013

Miscellaneous

- On April 1, 2013, ESS personnel assisted District I in locating an employee who was reported missing.
- On April 1-3, 2013, ESS personnel worked with the Hamilton, NJ Police Department in positively identifying a body found in the river below the Trenton-Morrisville Toll Bridge as the individual that jumped from the New Hope-Lambertville Toll Bridge on December 21, 2012.
- On April 2, 2013, ESS personnel prepared for Mr. Resta a video containing the various bridge jumper deaths that occurred on Commission bridges in 2012.
- On April 4, 2013, ESS personnel conducted a fire drill at the New Hope-Lambertville Toll Bridge Facility.
- On April 5, 2013, ESS personnel conducted a fire drill at the Trenton-Morrisville Toll Bridge Facility.
- On April 8, 2013, ESS personnel worked with Solebury, PA and Hopewell, NJ Police Departments to confirm the identity of a body recovered from the canal north of Stockton, NJ on April 7, 2013. The body was subsequently identified as that of an individual whose mother feared he committed suicide by jumping from the Lumberville-Raven Rock Toll Supported Pedestrian Bridge.
- On April 9, 2013, ESS personnel conducted fire drills at the I-78 and Easton-Phillipsburg Toll Bridge Facilities.
- On April 11, 2013, ESS personnel attended the DRJTBC Staff Meeting at New Hope Headquarters. Furthermore, on this date ESS personnel dealt with a disgruntled citizen that was recently arrested by the Lambertville, NJ Police Department. The subject was requesting the use of Commission property to organize a venture to "take back Lambertville."
- On April 16, 2013, ESS personnel processed MEC's March invoice for the ESS Maintenance Contract.
- On April 17, 2013, ESS personnel conducted a fire drill at the Delaware Water Gap Toll Bridge Facility. Later this evening, ESS personnel responded to the

DELAWARE RIVER JOINT TOLL BRIDGE COMMISSION

Meeting of May 20, 2013

ELECTRONIC SECURITY AND SURVEILLANCE REPORT MONTH OF APRIL 2013

New Hope-Lambertville Toll Supported Bridge after it was closed due to an overweight crossing.

- On April 22 and 23, 2013, ESS personnel participated in a meeting concerning possible opposing demonstrations at the Lower Trenton Toll Supported Bridge regarding the right to bear arms.
- ESS personnel continued updating Primary Control Center contact information for state, county, and local Offices of Emergency Management (OEM) up and down the river.
- ESS personnel continued interviewing candidates for possible part-time employment at the ESS Primary Control Center.
- ESS personnel worked with Mr. Donnelly regarding posting crisis intervention signs on specific Commission bridges.

DELAWARE RIVER JOINT TOLL BRIDGE COMMISSION

Meeting of May 20, 2013

OPERATIONS REPORT INDEX

FOR

SUPPLEMENTAL PROJECTS REPORT

MONTH OF APRIL 2013

SUBJECT	DESCRIPTION	PAGE NUMBER
Projects	Supplemental Projects Report-Overview Report of General Upkeep, Preventative Maintenance, Maintenance Projects and Update of Motor Assistance Program District I, II and III for the Month of April 2013	1 – 7

DELAWARE RIVER JOINT TOLL BRIDGE COMMISSION

Meeting of May 20, 2013

SUPPLEMENTAL PROJECTS REPORT

**OVERVIEW REPORT OF GENERAL UPKEEP, PREVENTATIVE MAINTENANCE,
MAINTENANCE PROJECTS AND UPDATE OF MOTOR ASSIST PROGRAM**

DISTRICT I, II AND III

MONTH OF MARCH 2013

Report as shown directly hereunder and have been submitted by Lendell Jones, Director of Plants and Facilities, to keep the Commission Members apprised of the above captioned items at all three districts.

District I
LeVar Talley, Superintendent
Michele Gara, Asst. Superintendent

 , Foreman of Maintenance, Trenton-Morrisville
Daniel Pascuillo, Foreman of Maintenance, New Hope-Lambertville

Trenton-Morrisville Toll Bridge

[illegible]

New Hope-Lambertville Toll Bridge

[illegible]

Southern Division Toll Supported Bridges

[illegible]

District II
James Shelly, Superintendent
Harry Brown, Asst. Superintendent
Robert Varju, Foreman of Maintenance, I-78
Mark W. Dilts, Foreman of Maintenance, Easton-Phillipsburg

Easton-Phillipsburg Toll Bridge

[illegible]

I-78 Toll Bridge

[illegible]

Northern Division Toll Supported Bridges

[illegible]

District III

Jeanne P. Clark, Superintendent

Richard Taitt, Assistant Superintendent

Steve Cerra, Foreman of Maintenance

Portland-Columbia Toll Bridge

[illegible]

Delaware Water Gap Toll Bridge

[illegible]

Milford-Montague Toll Bridge

[illegible]

DELAWARE RIVER JOINT TOLL BRIDGE COMMISSION

MONTHLY ACTIVITY SERVICES RENDERED REPORT

DISTRICT NORTHERN DIVISION

YEAR 2013

ACTIVITY/SERVICE	U-F	M-UBE	R-R	B-R	NS	P-C	TOTAL
Disabled Vehicle Removal	0	0	0	0	2	0	2
Shift/Hours On Duty	576	208	3826	2660.5	5119	0	12389.5
Patrols/Crossovers	298	107	1405	1440	3214	0	6464
Complaints Received	2	2	0	2	3	0	9
Co-Operation W/Other Agencies	90	5	441	85	162	0	783
Services Rendered	150	45	892	321	3220	0	4628
First Aid	0	0	0	0	3	0	3
Advisories: Pedestrians, Bikers & Automobiles	79	21	621	169	705	0	1595
Traffic Control Assistance	47	2	84	86.5	1013	0	1232.5
River Readings	93	14	378	364	441	0	1290
Vehicles Refused Passage	5	1	102	128	855	0	1091
Medical Emergencies (911 Calls)	0	0	0	1	2	0	3
Calls For Assistance (State Police)	0	0	2	5	3	0	10
TOTAL	1340	405	7751	5262	14742	0	29500

NOTES:



DELAWARE RIVER JOINT TOLL BRIDGE COMMISSION

MONTHLY ACTIVITY SERVICES RENDERED REPORT

DISTRICT SOUTHERN DIVISION

YEAR _____

ACTIVITY/SERVICE	CS	WC	NH-L	LT	CB-S	L-R	TOTAL
Disabled Vehicle Removal	8	0	0	1	0	0	9
Shift/Hours On Duty	1056	520	4	160	144	0	1884
Patrols/Crossovers	455	224	892	79	61	0	1711
Other Inspections	0	1	396	0	0	0	397
Complaints Received	21	0	0	3	0	0	24
Co-Operation W/Other Agencies	2	10	7	26	0	0	45
Services Rendered	172	81	185	19	2	0	459
First Aid	0	0	4	1	0	0	5
Advisories: Pedestrians, Bikers & Automobiles	159	41	138	14	2	0	354
Traffic Control Assistance	74	10	5	18	1	0	108
River Readings	102	65	54	0	7	0	228
Vehicles Refused Passage	160	7	25	2	1	0	195
Medical Emergencies (911 Calls)	0	0	2	0	0	0	2
Calls For Assistance (State Police)	3	1	4	21	0	0	29
Other Incidents	0	0	0	0	0	0	0
TOTAL	2212	960	1716	344	218	0	5450

NOTES:





**Monthly Motor Assistance Program Report
April 2013**

			AAA Called	Tire Ass't	Cleared Vehicle	Unleaded Gas	Diesel Fuel	Jump Start	Radiator Fill	Washer Fill	Cell Phone	Traffic Control	Transport Motorist	Other
4/2013	1	TM	1	2	3							1		
		Dist Total	1	2	3							1		
	2	EP		1	1							1		
		I78	4	2	4	1		1				7		1
		Dist Total	4	3	5	1		1				8		1
	3	DWG	3		2			3	1			2		1
		Dist Total	3		2			3	1			2		1
	Grand Total		8	5	10	1		4	1			11		2

DELAWARE RIVER JOINT TOLL BRIDGE COMMISSION

Meeting of May 20, 2013

USE OF FACILITIES REQUEST REPORT

MONTH OF APRIL 2013

SUBJECT	DESCRIPTION	PAGE NUMBER
Use of Facilities	Use of Facilities Request-Month of APRIL, 2013	1

DELAWARE RIVER JOINT TOLL BRIDGE COMMISSION

Meeting of May 20, 2013

PROPERTY REPORT

Use of Commission Facilities

Facility	Organization	Date/Time	Description of Use
Commission Bucket Truck	City of Easton	April 4, 2013 through April 5, 2013	Assist City of Easton with the installation of lights at Bob Rute Baseball fields.
New Hope Lambertville Toll Bridge	Lambertville Area Chamber of Commerce	April 27, 2013 through April 28, 2013	Install banners on Bridge St. and Union St. for Sad Fest

DELAWARE RIVER JOINT TOLL BRIDGE COMMISSION

Meeting of May 20, 2013

Operations Report Index

Plants and Facilities

SUBJECT	DESCRIPTION	PAGE NUMBER
Plants and Facilities	Status report Month of April, 2013	1-2

DELAWARE RIVER JOINT TOLL BRIDGE COMMISSION

Meeting of May 20, 2013

PLANTS AND FACILITIES REPORT MONTH OF APRIL 2013

- **Oversaw and monitored activities for the Motorist Assistance Program during the month of April 2013. Forwarded the monthly report to the acting Executive Director of Operations.**
- **Attended C-07-11C 2013 Toll Bridge Inspections & Interim Inspections for Load-Posted Bridges (GEC Kick-off Meeting) at the Delaware Water Gap Toll Bridge Facility.**
- **Conducted District I Toll Sergeant and Corporal Oral Interviews with five Toll Sergeant Candidates and three Toll Corporal Candidates in the Trenton-Morrisville boardroom.**
- **Attended Senior Staff meeting to discuss and finalize agenda for monthly committee meeting.**
- **Attended the monthly Commission meeting at the New Hope – Lambertville Toll Bridge Facility.**
- **Attended Committee Agenda Review meeting at the New Hope Lambertville Toll Bridge Facility.**
- **Attended meeting to discuss CPA/CGOBC Rally scheduled for May 11, 2013 at the lower Trenton Toll Supported Bridge.**
- **Attended meeting to discuss Initial Planning Meeting for Rededication Ceremonies for Lumberville-Raven Rock Pedestrian Bridge.**
- **Completed New Jersey Department of Environmental Protection Underground Storage Tank Facility Certification Questionnaire to receive yearly certificate for Easton Phillipsburg Underground Storage Tank.**
- **Chaired the quarterly Green Team Meeting at the New Hope Lambertville Toll Bridge. Topics discussed were Wildflower project, Recycling Quantities, planting and removal of trees and shrubs on Commission property and Municipal Storm water Compliance.**

DELAWARE RIVER JOINT TOLL BRIDGE COMMISSION

Meeting of May 20, 2013

- **Scheduled preventative maintenance for HVAC unit at New Hope Lambertville Toll Bridge Facility.**
- **Scheduled three year periodic testing for the I-78 Toll Administration building elevator as defined in section 405.8 of the Uniform Construction Code.**
- **Reviewed the Accident Log/Property Damage Reports for the month of April 2013. Forwarded the monthly report to the Director of Human Resources, Insurance Administrator, Comptroller and the acting Deputy Executive Director of Operations.**
- **Continued site visits of Commission Facilities during the month of April 2013 to review plant operations, maintenance procedures and related issues**
- **Forwarded the Use of Commission Facilities Requests for the month of April 2013 to the acting Deputy Executive Director of Operations.**

DELAWARE RIVER JOINT TOLL BRIDGE COMMISSION

Meeting of May 20th, 2013

INFORMATION TECHNOLOGY DEPARTMENT REPORT

MONTH OF APRIL 2013

SUBJECT	DESCRIPTION	PAGE NUMBER
Information Technology	Monthly Information Technology Department Report Covering the Month of April 2013	1 - 2

DELAWARE RIVER JOINT TOLL BRIDGE COMMISSION
Meeting of May 20th, 2013

Information Technology Department Report
Month of April 2013

The following activities under the general heading of Information Technology were recently initiated, accomplished, or performed:

▮ Helpdesk/Communications/Network/desktops:

- Record commission meeting and provided file to executive office.
- Processed 148 help desk work orders for the month April. Work orders include all software support including MUNIS, Cartegraph and KRONOS. Printer issues, hardware and office software support, job postings, news posting, postings to the external web site, processing of IT security forms, and telephone support.

▮ Projects:

- MUNIS
 - Ongoing support for MUNIS including user support and issues.
 - Apply MUNIS software program updates nightly. Averages 6 per day.
- CIPAce
 - No status to report
- Cartegraph
 - Beginning process of implementing BridgeView
 - FEMA work Order created. Process for maintenance is being developed. Equipment is being marked as FEMA equipment.
 - Beginning in May IT will be training OIC's on using Cartegraph WO form.
 - Continual monitoring of system to determine user usage
 - Pool Vehicle Fuel log report modified and updated.
 - IT deployed a process to retire assets
- KRONOS Time and Attendance
 - Accrual module configured and full implementation will be at beginning of April. All accruals will be calculated in KRONOS rather than ADP.
 - Schedule patterns have been developed and maintained by IT
 - Continued meetings with KRONOS to resolve issues.
 - IT will update schedules now instead of Assistant Supers. Assistants will update part time schedules. Schedule patterns have been developed and maintained by IT
 - IT preparing training manuals to train Assist. Supers, Supers and KRONOS managers.

DELAWARE RIVER JOINT TOLL BRIDGE COMMISSION
Meeting of May 20th, 2013

➤ **External Website**

- Working with communications to develop RFP for website redesign and hosting.
- Provide requirement for website job posting.

➤ Intranet:

- Update news clipping and engineering requests.
- Update all documentation and forms on internal website including maintaining morning report program
- Maintain all job postings on Intranet

➤ Recycle/Green initiative:

- Attended meeting at NHL on 4/19/13.

➤ Miscellaneous:

- Scan, and approve Verizon communications invoices for payment.
- 2 bad microphones needed replaced for the boardroom. The current microphones are no longer being supported. Refurbished Mics are now being used.
- Develop and maintain InfoPath forms and Access DB for commission operations reporting functions.
- Recycling of computer equipment will be scheduled in June.

DELAWARE RIVER JOINT TOLL BRIDGE COMMISSION

Meeting of May 20, 2013

NEW BUSINESS

LETTER OF COMMENDATIONS

Letters of commendation are reproduced directly hereunder and is self-explanatory.

DELAWARE RIVER JOINT TOLL BRIDGE COMMISSION

Meeting of May 20, 2013

NEW BUSINESS

LETTER OF COMMENDATION

SUBJECT	DESCRIPTION	PAGE NUMBER
New Business	Letter of Commendation	1

BOROUGH OF PORTLAND

570-897-0559 Fax 570-897-7909
portlandboroughpa@gmail.com

P. O. Box 476
206 Division Street
Portland, PA 18351

April 16, 2013

Ms. Jeanne M. Pomager-Clark
District 3 Superintendent
P. O. Box 377
Portland, PA 18351

Dear Ms. Pomager-Clark,

The Borough of Portland PA and the Borough Street Department Chairperson, Mr. Steve Knott, thank you for your generosity for supplying the necessary equipment and manpower to clean the streets of our municipality.

We appreciate the cooperation between the DRJTBC (our good neighbors) and the officials of the Borough of Portland.

Sincerely,

Carol A. Hummel

Carol A. Hummel, Secretary

cc. Portland Borough Council
Lance J. Prator, Mayor