

SCUDDER FALLS BRIDGE

REPLACEMENT
PROJECT



Commissioners Committee Meeting | 2/21/18



SCUDDER FALLS BRIDGE REPLACEMENT PROJECT

Construction Progress Photos

January - February 2018



SCUDDER FALLS BRIDGE REPLACEMENT PROJECT

PENNSYLVANIA APPROACH



PA Approach Median Drainage



PA Approach Median Barrier





PA Approach Median Barrier



SCUDDER FALLS BRIDGE REPLACEMENT PROJECT

Bridge Monitor/
AET Building Site



I-95 Bridge over Delaware Canal



I-95 Bridge over Delaware Canal



Roadway Retaining Walls

Roadway Retaining Walls





Roadway Retaining Walls

84" Sleeve "Jack & Bore" Operation





84" Sleeve Install Boring

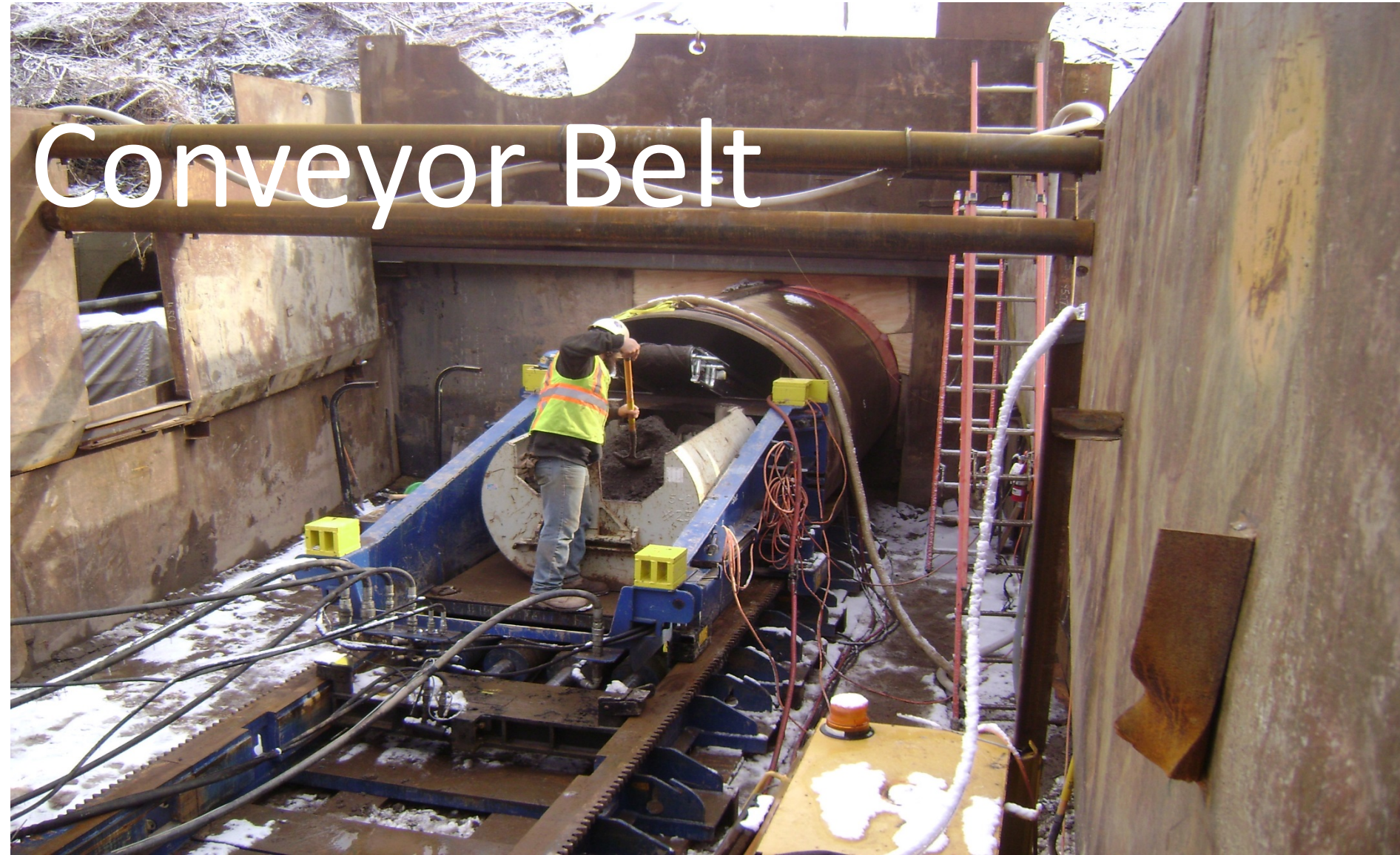




Clearing Excavation



Conveyor Belt



Jack Next 20 ft Section





Weld 84" Sections



SCUDDER FALLS BRIDGE REPLACEMENT PROJECT

MAIN RIVER BRIDGE



Phase 1 Causeway





PIER 2 – Cofferdam Construction





PIER 3 – Causeway Finger Construction



PIER 4 – Causeway Construction

Abutment 2 (NJ) – Back Wall







PIER 6 – Stems & Cap



One-Line Assembly of MRB Structural Steel



Main River Bridge – Girder Delivery





MRB Girder Lift Crane



MRB Girder Lift Crane



ABUTMENT 2 (NJ)

SPAN 7



SPAN 7 - Temporary Supports



SPAN 7 - Temporary Supports



PIER 6 / Span 7







PIER 5 - Stems



PIER 5 – Cap Reinforcing Cage



PIER 5 – Cap Reinforcing Cage Placement



PIER 5 – Cap Reinforcing Cage Placement





PIER 5 — Cap Concrete Pour



SCUDDER FALLS BRIDGE REPLACEMENT PROJECT

NEW JERSEY







