

**Delaware River Joint Toll Bridge Commission**

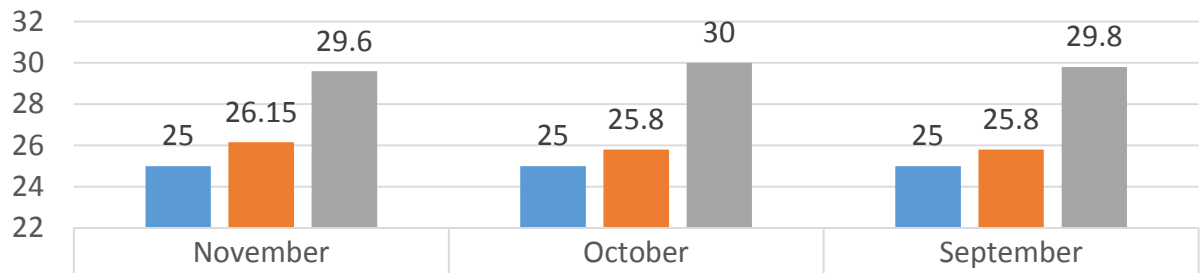
**Meeting of December 19, 2016**

**CONTRACT COMPLIANCE REPORT INDEX**

**Month of November 2016**

**IBE QUARTERLY REPORT**  
**September 1, 2016 to November 30, 2016**

**IBE QUARTERLY PERCENTAGES**



■ TARGET	25	25	25
■ COMMITMENT	26.15	25.8	25.8
■ ACTUAL	29.6	30	29.8

■ TARGET ■ COMMITMENT ■ ACTUAL

**Delaware River Joint Toll Bridge Commission**

**Meeting of December 19, 2016**

**COMPLIANCE OVERVIEW REPORT**

Number of Contracts	<b>28</b>
Total Contract Value	<b>\$93,781,660</b>
Total Payments	<b>\$38,715,893</b>
Total Payments For Credit	<b>\$11,460,937</b>
Target	<b>26.15%</b>
Actual	<b>29.60%</b>

Report Run: 12/01/16

Contract Number	Contract Title	Business Name	Date Start	Date End	Status	Contract Value	Payments Total Prime	Payments Total For Credit	Target	Actual
CI-566A	Portland Columbia Toll Bridge Construction Inspection Services	Jacobs Engineering	2/23/2015	10/15/2016	Open	\$532,349	\$476,992	\$75,079	36.4%	15.7%
T-566A	PORTLAND COLUMBIA TOLL BRIDGE APPROACH ROADWAY IMPROVEMENTS	INTERCOUNTY PAVING ASSOCIATES LLC	2/23/2015	11/30/2016	Closed	\$6,317,000	\$6,193,334	\$1,940,819	27.2%	31.3%
TS-639B	LOWER TRENTON TOLL SUPPORTED BRIDGE APPROACH AND ROADWAY IMPROVEMENTS	Mount Construction Company	1/30/2015	7/17/2016	Open	\$2,731,688	\$2,090,794	\$2,090,794	100.0%	100.0%
C-657A	Building Construction Management Task Order	Joseph Jingoli & Son, Inc.	10/27/2014	10/26/2017	Open	\$300,000	\$142,436	\$53,328	25.0%	37.4%
C-684A-1	Professional Engineering Services General Engineering Consultant 2015-2016 Annual Inspection	Cherry, Weber & Associate, PC	2/23/2015	12/31/2017	Open	\$420,000	\$376,694	\$86,811	25.0%	23.0%
C-660A	Scudder Falls Bridge Replacement Project Design Services	Michael Baker International	2/23/2015	12/31/2022	Open	\$22,490,000	\$19,362,281	\$4,719,027	25.2%	24.4%

## Delaware River Joint Toll Bridge Commission

Meeting of December 19, 2016

Contract Number	Contract Title	Business Name	Date Start	Date End	Status	Contract Value	Payments Total Prime	Payments Total For Credit	Target	Actual
T-661A	Scudder Falls Bridge Replacement Subsurface Boring & Sampling	TRC Engineers, Inc.	5/18/2015	5/18/2017	Open	\$1,559,275	\$1,433,942	\$234,466	26.0%	16.4%
TS-677A	Scudder Falls Toll-Supported Bridge Interim Deck Repairs	Sparwick Contracting, Inc	5/18/2015	11/20/2018	Open	\$916,696	\$715,578	\$715,578	100.0%	100.0%
T-514A	District 3 Toll Bridge Facilities Emergency Standby Generators Improvements	West Side Electrical	7/27/2015	1/8/2017	Closed	\$680,480	\$644,686	\$197,339	29.0%	30.6%
C-508A	DRJTBC Professional Engineering Services for I-78 Maintenance Garage Expansion	Burns Engineering, Inc	7/27/2015	9/30/2018	Open	\$686,117	\$585,820	\$272,509	44.5%	46.5%
C-663A	Pre-Construction Traffic Study for the SFB Replacement Project	PENNONI ASSOCIATES INC	7/27/2015	4/20/2017	Open	\$248,468	\$219,339	\$0	36.5%	0.0%
C-662A	Public Involvement Consultant Services Scudder Falls Interim Deck Repairs	McCormick Taylor, Inc.	9/28/2015	12/30/2021	Open	\$1,800,017	\$343,927	\$38,186	45.0%	11.1%
DB-540A	Electronic Toll Collection System Replacement Design, Build and Maintain	TransCore, LP	9/28/2015	9/13/2021	Open	\$24,047,349	\$1,904,044	\$358,534	11.3%	18.8%
C-696A	Professional Engineering Services for Facilities Task Order Agreement - PA Assignment	Johnson, Mirmiran & Thompson, Inc.	10/26/2015	10/26/2017	Open	\$500,000	\$10,077	\$0	30.0%	0.0%
C-650A	Riverton-Belvidere TSB Critical Members Strengthening Design	AMMANN & WHITNEY CONSULTING ENGINEERS PC	10/26/2015	1/16/2017	Open	\$517,539	\$400,762	\$86,439	25.8%	21.6%

**Delaware River Joint Toll Bridge Commission**

**Meeting of December 19, 2016**

Contract Number	Contract Title	Business Name	Date Start	Date End	Status	Contract Value	Payments Total Prime	Payments Total For Credit	Target	Actual
T-667A	TREE CLEARING CONTRACT SCUDDER FALLS BRIDGE	AP CONSTRUCTION , INC	11/25/2015	1/6/2017	Open	\$1,814,999	\$632,979	\$407,025	25.0%	64.3%
T-641A	E P Toll Bridge Ramp Stabilization	Merco Inc	12/28/2015	6/2/2016	Closed	\$1,130,000	\$998,300	\$0	100.0%	0.0%
CM-508A	I-78 Maintenance Garage Expansion, CMS	STV Incorporated	3/1/2016	11/1/2017	Open	\$586,403	\$91,113	\$1,229	31.8%	1.3%
CM-664A	Construction Management and Constructability Review Svcs. for the Scudder Falls Bridge PA Noise Walls Construction	GREENMAN-PEDERSEN INC	2/29/2016	3/30/2017	Open	\$912,693	\$377,913	\$7,368	29.8%	1.9%
C-644A	Design Svcs. for the I78 Bridges and Approach Slab Rehabilitation	Gannett Fleming, Inc.	2/29/2016	11/23/2016	Open	\$651,157	\$104,381	\$0	25.0%	0.0%
C-701A	Electronic Toll Collection/Tolling Task Order Assignment Consultant (PA Assignment)	Rummel, Klepper & Kahl, LLP	3/28/2016	3/28/2018	Open	\$500,000	\$0	\$0	25.0%	0.0%
T-705A	I-78 Toll Plaza Bumper Block Replacement	Sparwick Contracting, Inc	3/28/2016	5/22/2016	Open	\$160,006	\$0	\$0	0.0%	0.0%
T-666A	PA NOISE WALLS SCUDDER FALLS BRIDGE (SFB)	PKF-MARK III INCORPORATED	3/1/2016	4/20/2017	Open	\$11,394,750	\$1,584,489	\$176,407	25.0%	11.1%
T-508A	I-78 Maintenance Garage Expansion	Bracy Construction	6/28/2016	10/27/2016	Open	\$10,049,000	\$0	\$0	22.8%	0.0%
CI-665A	Construction Inspection Services for SFB PA Noise Walls Construction	Jacobs Engineering	3/29/2016	1/13/2017	Open	\$626,965	\$26,013	\$0	25.3%	0.0%
TS-650A	Riverton-Belvidere TSB Critical Member Strengthening	Road -Con, Inc	7/19/2016	11/11/2016	Open	\$708,707	\$0	\$0	11.2%	0.0%
C-696B	Facilities Task Order Agreement - NJ Assignment	FRENCH & PARRELLO ASSOCIATES, PA	7/18/2016	7/31/2018	Open	\$500,000	\$0	\$0	0.0%	0.0%

**Delaware River Joint Toll Bridge Commission**

**Meeting of December 19, 2016**

<b>Contract Number</b>	<b>Contract Title</b>	<b>Business Name</b>	<b>Date Start</b>	<b>Date End</b>	<b>Status</b>	<b>Contract Value</b>	<b>Payments Total Prime</b>	<b>Payments Total For Credit</b>	<b>Target</b>	<b>Actual</b>
C-702B	Structural/Civil Task Order Agreement - NJ Assignment	IH Engineers PC	10/31/2016	10/31/2018	Open	\$1,000,000	\$0	\$0	60.0%	0.0%

---

# Delaware River Joint Toll Bridge Commission

Meeting of December 19, 2016

## PRIMES AND SUBCONTRACTORS ON ACTIVE CONTRACTS

Contract Number	Contract Description	Prime Contractor	Contract Type	Vendor Type	Sub-contractor	Ethnicity	Gender	For Credit	Contract Amount	Contract Goal Percent	Subcontract Award	Subcontract Percent
C-508A	DRJTBC Professional Engineering Services for I-78 Maintenance Garage Expansion	Burns Engineering, Inc	Professional Services	Prime	Burns Engineering, Inc			No	\$686,117	44.50%		
			Professional Services	Sub-contractor	American Engineers Group, LLC	Asian Indian	Male	Yes			\$24,014	3.50%
			Professional Services	Sub-contractor	Malick & Scherer, PC	Asian Indian	Male	Yes			\$109,779	16.00%
			Professional Services	Sub-contractor	Sowinski Sullivan	Caucasian	Female	Yes			\$171,529	25.00%
C-644A	Design Svcs. for the I78 Bridges and Approach Slab Rehabilitation	Gannett Fleming, Inc.	Professional Services	Prime	Gannett Fleming, Inc.	Other		No	\$651,157	25.00%		
			Professional Services	Sub-contractor	Malick & Scherer, PC	Asian Indian	Male	Yes			\$65,116	10.00%
			Professional Services	Sub-contractor	SJH Engineering, PC	Asian Pacific	Male	Yes			\$97,674	15.00%
C-650A	Riverton-Belvidere Tool-Supported Bridge Critical Members Strengthening Design	AMMANN & WHITNEY CONSULTING ENGINEERS PC	Professional Services	Prime	AMMANN & WHITNEY CONSULTING ENGINEERS PC			No	\$517,539	25.80%		
			Professional Services	Sub-contractor	Pickering, Corts & Summerson			Yes			\$133,525	25.80%
C-657A	Building Construction Management Task Order	Joseph Jingoli & Son, Inc.	Professional Services - Task Order	Prime	Joseph Jingoli & Son, Inc.			No	\$300,000	25.00%		
			Professional Services - Task Order	Sub-contractor	Burriss Engineers, Inc.	Black	Male	Yes			\$0	0.00%
			Professional Services - Task Order	Sub-contractor	JBC Associates, Inc.	Caucasian	Female	Yes			\$0	0.00%
			Professional Services - Task Order	Sub-contractor	STPCX, LLC	Hispanic	Male	Yes			\$0	0.00%
			Professional Services - Task Order	Sub-contractor	USA Architects Panners and Interior Designers			Yes			\$0	0.00%
C-660A	Scudder Falls Bridge Replacement Project Design Services	Michael Baker International	Professional Services	Prime	Michael Baker International			No	\$22,490,000	25.20%		

# Delaware River Joint Toll Bridge Commission

## Meeting of December 19, 2016

Contract Number	Contract Description	Prime Contractor	Contract Type	Vendor Type	Sub-contractor	Ethnicity	Gender	For Credit	Contract Amount	Contract Goal Percent	Subcontract Award	Subcontract Percent
			Professional Services	Sub-contractor	AMY S GREENE ENVIRONMENTAL CONSULTANTS, INC.	Caucasian	Female	Yes			\$449,800	2.00%
			Professional Services	Sub-contractor	French & Parrello Associates			Yes			\$1,506,830	6.70%
			Professional Services	Sub-contractor	IH Engineers PC	Asian Indian	Male	Yes			\$2,383,940	10.60%
			Professional Services	Sub-contractor	Naik Consulting Group, PC	Asian	Male	Yes			\$1,326,910	5.90%
			Professional Services	Sub-contractor	Stokes Creative Group, Inc.	Caucasian	Female	Yes			\$427,310	1.90%
C-662A	Public Involvement Consultant Services Scudder Falls Interim Deck Repairs	McCormick Taylor, Inc.	Professional Services	Prime	McCormick Taylor, Inc.			No	\$1,800,017	45.00%		
			Professional Services	Sub-contractor	Information Logistics, Inc	Caucasian	Female	Yes			\$180,002	10.00%
			Professional Services	Sub-contractor	Stokes Creative Group, Inc.	Caucasian	Female	Yes			\$630,006	35.00%
C-663A	Pre-Construction Traffic Study for the SFB Replacement Project	PENNONI ASSOCIATES INC	Professional Services	Prime	PENNONI ASSOCIATES INC			No	\$248,468	36.50%		
			Professional Services	Sub-contractor	Drive Engineering Corp.	Hispanic	Male	Yes			\$8,448	3.40%
			Professional Services	Sub-contractor	TechniQuest Corporation	Asian Indian	Male	Yes			\$90,691	36.50%
C-684A-1	Professional Engineering Services General Engineering Consultant 2015-2016 Annual Inspection	Cherry, Weber & Associate, PC	Professional Services	Prime	Cherry, Weber & Associate, PC			No	\$420,000	25.00%		
			Professional Services	Sub-contractor	SJH Engineering, PC	Asian Pacific	Male	Yes			\$105,000	25.00%
C-696A	Professional Engineering Services for Facilities Task Order agreement - PA Assignment	Johnson, Mirmiran & Thompson, Inc.	Professional Services - Task Order	Prime	Johnson, Mirmiran & Thompson, Inc.			No	\$500,000	30.00%		
			Professional Services - Task Order	Sub-contractor	ACT Engineers, Inc.	Caucasian	Female	Yes			\$25,000	5.00%
			Professional Services - Task Order	Sub-contractor	AMERICAN GEOTECHNICAL & ENVIRONMENTAL SERVICES INC. (AGES, INC.)			Yes			\$25,000	5.00%

## Delaware River Joint Toll Bridge Commission

### Meeting of December 19, 2016

Contract Number	Contract Description	Prime Contractor	Contract Type	Vendor Type	Sub-contractor	Ethnicity	Gender	For Credit	Contract Amount	Contract Goal Percent	Subcontract Award	Subcontract Percent
			Professional Services - Task Order	Sub-contractor	BATTA ENVIRONMENTAL ASSOCIATES, INC.	Asian Indian	Male	Yes			\$25,000	5.00%
			Professional Services - Task Order	Sub-contractor	Envision Consultants, LTD	Caucasian	Female	Yes			\$25,000	5.00%
			Professional Services - Task Order	Sub-contractor	SJH Engineering, PC	Asian Pacific	Male	Yes			\$25,000	5.00%
			Professional Services - Task Order	Sub-contractor	TRAFFIC PLANNING & DESIGN INC			Yes			\$25,000	5.00%
C-696B	Facilities Task Order Agreement - NJ Assignment	FRENCH & PARRELLO ASSOCIATES, PA		Prime	FRENCH & PARRELLO ASSOCIATES, PA			No	\$500,000	0.00%		
C-701A	Electronic Toll Collection / Tolling Task Order Assignment Consultant (PA Assignment)	Rummel, Klepper & Kahl, LLP	Professional Services - Task Order	Prime	Rummel, Klepper & Kahl, LLP			No	\$500,000	25.00%		
			Professional Services - Task Order	Sub-contractor	Fagan Consulting, LLC	Black	Male	Yes			\$50,000	10.00%
			Professional Services - Task Order	Sub-contractor	KS Engineers, PC	Asian	Male	Yes			\$35,000	7.00%
			Professional Services - Task Order	Sub-contractor	Spock Solutions, Inc.	Caucasian	Female	Yes			\$40,000	8.00%
C-702B	Structural/Civil Task Order Agreement - NJ Assignment	IH Engineers PC	Professional Services - Task Order	Prime	IH Engineers PC	Asian Indian	Male	No	\$1,000,000	60.00%		
CI-566A	Portland Columbia Toll Bridge Construction Inspection Services	Jacobs Engineering	Professional Services	Prime	Jacobs Engineering			No	\$532,349	36.42%		
			Professional Services	Sub-contractor	Amercom Corp. Consulting Engineers	Asian Pacific	Male	Yes			\$167,956	31.55%
			Professional Services	Sub-contractor	Naik Consulting Group, PC	Asian	Male	Yes			\$25,925	4.87%
CI-665A	Construction Inspection Services for SFB PA Noise Walls Construction	Jacobs Engineering	Professional Services	Prime	Jacobs Engineering			No	\$626,965	25.26%		
			Professional Services	Sub-contractor	IH Engineers PC	Asian Indian	Male	Yes			\$90,283	14.40%
			Professional Services	Sub-contractor	RIG Consulting, Inc.	Caucasian	Female	Yes			\$68,088	10.86%



## Delaware River Joint Toll Bridge Commission

### Meeting of December 19, 2016

Contract Number	Contract Description	Prime Contractor	Contract Type	Vendor Type	Sub-contractor	Ethnicity	Gender	For Credit	Contract Amount	Contract Goal Percent	Subcontract Award	Subcontract Percent
CM-508A	I-78 Maintenance Garage Expansion, CMS	STV Incorporated	Professional Services	Prime	STV Incorporated	Caucasian	Male	No	\$586,403	31.83%		
			Professional Services	Sub-contractor	Envision Consultants, LTD	Caucasian	Female	Yes			\$87,198	14.87%
			Professional Services	Sub-contractor	HRV CONFORMANCE VERIFICATION ASSOCIATES, INC.	Caucasian	Female	Yes			\$15,364	2.62%
			Professional Services	Sub-contractor	IH Engineers PC	Asian Indian	Male	Yes			\$84,090	14.34%
CM-664A	Construction Management and Constructability Review Svcs. for the Scudder Falls Bridge PA Noise Walls Construction	GREENMAN-PEDERSEN INC	Professional Services	Prime	GREENMAN-PEDERSEN INC			No	\$912,693	29.80%		
			Professional Services	Sub-contractor	Envision Consultants, LTD	Caucasian	Female	Yes			\$47,460	5.20%
			Professional Services	Sub-contractor	Keegan Technology & Testing Assocs., Inc.			Yes			\$33,770	3.70%
			Professional Services	Sub-contractor	Naik Consulting Group, PC	Asian	Male	Yes			\$167,023	18.30%
			Professional Services	Sub-contractor	SAFEGATE ASSOCIATES LLC D/B/A APPLGATE ASSOCIATES			Yes			\$23,730	2.60%
DB-540A	Electronic Toll Collection System Replacement Design, Build and Maintain	TransCore, LP	Professional Services	Prime	TransCore, LP			No	\$24,047,349	11.33%		
			Professional Services	Sub-contractor	All Points Communications, Inc.	Caucasian	Female	Yes			\$781,539	3.25%
			Professional Services	Sub-contractor	Arora Engineers, Inc.	Asian Indian	Male	Yes			\$16,112	0.07%
			Professional Services	Sub-contractor	Globe Electric Supply Company, Inc.	Caucasian	Female	Yes			\$543,470	2.26%
			Professional Services	Sub-contractor	Jen Electric, Inc.	Caucasian	Female	Yes			\$848,871	3.53%
			Professional Services	Sub-contractor	KS Engineers, PC	Asian	Male	Yes			\$110,618	0.46%
			Professional Services	Sub-contractor	Red Wagon Printing, LLC	Caucasian	Female	Yes			\$16,833	0.07%
			Professional Services	Sub-contractor	Sharpened Image, Inc.	Black	Female	Yes			\$149,094	0.62%

# Delaware River Joint Toll Bridge Commission

## Meeting of December 19, 2016

Contract Number	Contract Description	Prime Contractor	Contract Type	Vendor Type	Sub-contractor	Ethnicity	Gender	For Credit	Contract Amount	Contract Goal Percent	Subcontract Award	Subcontract Percent
			Professional Services	Sub-contractor	SJH Engineering, PC	Asian Pacific	Male	Yes			\$14,500	0.06%
			Professional Services	Sub-contractor	SJH Engineering, PC	Asian Pacific	Male	Yes			\$12,024	0.05%
			Professional Services	Sub-contractor	Traffic Control Services, LLC	Caucasian	Female	Yes			\$100,999	0.42%
T-508A	I-78 Maintenance Garage Expansion	Bracy Construction	Construction	Prime	Bracy Construction		Male	No	\$10,049,000	22.76%		
			Construction	Sub-contractor	CA Weiss Sales, LLC	Caucasian	Female	Yes			\$275,343	2.74%
			Construction	Sub-contractor	Central Penn Welding & Ironworks	Black	Male	Yes			\$7,286	0.07%
			Construction	Sub-contractor	Dewalt Plumbing		Male	No			(\$120,990)	-1.20%
			Construction	Sub-contractor	Duggan and Marcon			No			(\$59,792)	-0.60%
			Construction	Sub-contractor	Fox Quality Roofing		Male	No			(\$275,343)	-2.74%
			Construction	Sub-contractor	GAVER INDUSTRIES INC			Yes			\$1,216,934	12.11%
			Construction	Sub-contractor	Ida Yeager Sales, Inc.	Caucasian	Female	Yes			\$120,990	1.20%
			Construction	Sub-contractor	John F. Scanlan, Inc.	Caucasian	Female	Yes			\$13,064	0.13%
			Construction	Sub-contractor	Minority Contractors Inc.	Black	Male	Yes			\$87,426	0.87%
			Construction	Sub-contractor	Penn State Electric Mechanical Supply Co, Inc.	Asian	Male	Yes			\$117,875	1.17%
			Construction	Sub-contractor	Reeb Building Systems	Caucasian	Female	Yes			\$279,965	2.79%
			Construction	Sub-contractor	Steel Fab Enterprises		Male	No			(\$7,286)	-0.07%
			Construction	Sub-contractor	Tracorp	Caucasian	Female	Yes			\$51,250	0.51%
			Construction	Sub-contractor	Tri County Mechanical		Male	No			(\$279,965)	-2.79%
			Construction	Sub-contractor	V J Supply, Inc.	Asian Pacific	Male	Yes			\$59,792	0.60%
			Construction	Sub-contractor	Wind Gap Electric		Male	No			(\$117,875)	-1.17%
			Construction	Sub-contractor	YCP, Inc.	Caucasian	Female	Yes			\$28,137	0.28%

## Delaware River Joint Toll Bridge Commission

### Meeting of December 19, 2016

Contract Number	Contract Description	Prime Contractor	Contract Type	Vendor Type	Sub-contractor	Ethnicity	Gender	For Credit	Contract Amount	Contract Goal Percent	Subcontract Award	Subcontract Percent
T-514A	District 3 Toll Bridge Facilities Emergency Standby Generators Improvements	West Side Electrical	Construction	Prime	West Side Electrical			No	\$680,480	29.00%		
			Construction	Sub-contractor	Penn State Electric Mechanical Supply Co, Inc.	Asian	Male	Yes			\$197,339	29.00%
T-641A	Easton Phillipsburg Toll Bridge Ram PC Stabilization	Merco Inc	Construction	Prime	Merco Inc	Caucasian	Male	No	\$1,130,000	100.00%		
T-661A	Scudder Falls Bridge Replacement Subsurface Boring & Sampling Contract	TRC Engineers, Inc.	Construction	Prime	TRC Engineers, Inc.	Caucasian	Male	No	\$1,559,275	26.00%		
			Construction	Sub-contractor	Burgette Excavation, LLC t/a Traffic Regulators	Black	Male	Yes			\$233,891	15.00%
			Construction	Sub-contractor	Garden State Highway Products, Inc.	Caucasian	Female	Yes			\$171,520	11.00%
T-666A	PA NOISE WALLS SCUDDER FALLS BRIDGE (SFB)	PKF-MARK III INCORPORATED	Construction	Prime	PKF-MARK III INCORPORATED			No	\$11,394,750	25.00%		
			Construction	Sub-contractor	Sanders Construction Co., Inc.	Asian Pacific	Female	Yes			\$2,848,688	25.00%
T-667A	TREE CLEARING CONTRACT SCUDDER FALLS BRIDGE	AP CONSTRUCTION INC	Construction	Prime	AP CONSTRUCTION INC	Caucasian	Male	No	\$1,814,999	25.00%		
			Construction	Sub-contractor	Athena Contracting, Inc	Caucasian	Female	Yes			\$181,500	10.00%
			Construction	Sub-contractor	Sable Construction, Inc.	Black	Male	Yes			\$272,250	15.00%
T-705A	I-78 Toll Plaza Bumper Block Replacement	Sparwick Contracting, Inc		Prime	Sparwick Contracting, Inc	Caucasian	Male	No	\$160,006	0.00%		
TS-639B	LOWER TRENTON TOLL SUPPORTED BRIDGE APPROACH AND ROADWAY IMPROVEMENTS	Mount Construction Company	Construction	Prime	Mount Construction Company			Yes	\$2,731,688	100.00%		
			Construction	Prime Self Performing	Mount Construction Company			Yes			\$2,731,688	100.00%
TS-650A	Riverton-Belvidere TSB Critical Member Strengthening	Road -Con, Inc	Construction	Prime	Road -Con, Inc			No	\$708,707	11.23%		

## Delaware River Joint Toll Bridge Commission

### Meeting of December 19, 2016

Contract Number	Contract Description	Prime Contractor	Contract Type	Vendor Type	Sub-contractor	Ethnicity	Gender	For Credit	Contract Amount	Contract Goal Percent	Subcontract Award	Subcontract Percent
			Construction	Sub-contractor	DESILVIO & COMPANY, INC.	Caucasian	Female	Yes			\$18,426	2.60%
			Construction	Sub-contractor	Established Traffic Control, Inc.	Other	Female	Yes			\$5,174	0.73%
			Construction	Sub-contractor	RAM-T CORPORATION	Caucasian	Female	Yes			(\$4,252)	-0.60%
			Construction	Sub-contractor	Williams Flagger Logistics, LLC	Black	Male	Yes			\$41,814	5.90%
TS-677A	Scudder Falls Toll-Supported Bridge Interim Deck Repairs	Sparwick Contracting, Inc	Construction	Prime	Sparwick Contracting, Inc	Caucasian	Male	No	\$916,696	100.00%		
			Construction	Prime Self Performing	Sparwick Contracting, Inc	Caucasian	Male	Yes			\$916,696	100.00%