

**Delaware River Joint Toll Bridge Commission**

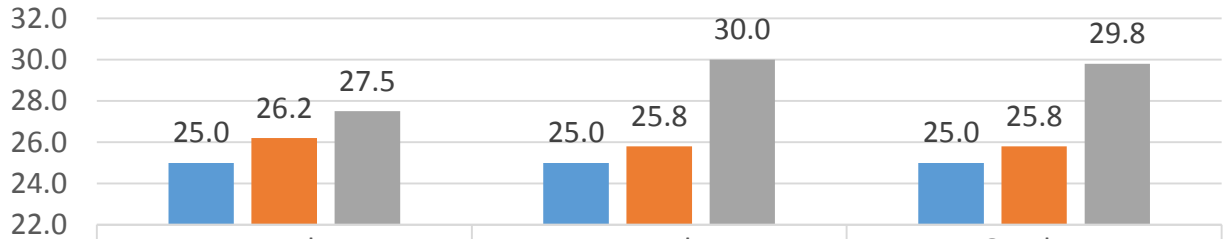
**Meeting of January 30, 2017**

**CONTRACT COMPLIANCE REPORT INDEX**

**Month of December 2016**

**IBE QUARTERLY REPORT  
October 1, 2016 to December 31, 2016**

**IBE QUARTERLY PERCENTAGES**



	December	November	October
■ TARGET	25.0	25.0	25.0
■ COMMITMENT	26.2	25.8	25.8
■ ACTUAL	27.5	30.0	29.8

■ TARGET ■ COMMITMENT ■ ACTUAL

# Delaware River Joint Toll Bridge Commission

Meeting of January 30, 2017

## COMPLIANCE OVERVIEW REPORT

Number of Contracts	<b>28</b>
Total Contract Value	<b>\$93,781,660</b>
Total Payments	<b>\$43,184,617</b>
Total Payments For Credit	<b>\$11,874,717</b>
Target	<b>26.15%</b>
Actual	<b>27.50%</b>

Report Run: 01/09/17

Contract Number	Contract Title	Business Name	Date Start	Date End	Status	Contract Value	Payments Total Prime	Payments Total For Credit	Goal	Util.
CI-566A	Portland Columbia Toll Bridge Construction Inspection Services	Jacobs Engineering	2/23/2015	10/15/2016	Open	\$532,349	\$476,992	\$75,079	36.4%	15.7%
T-566A	PORTLAND COLUMBIA TOLL BRIDGE APPROACH ROADWAY IMPROVEMENTS	INTERCOUNTY PAVING ASSOCIATES LLC	2/23/2015	11/30/2016	Closed	\$6,317,000	\$6,193,334	\$1,940,819	27.2%	31.3%
TS-639B	LOWER TRENTON TOLL SUPPORTED BRIDGE APPROACH AND ROADWAY IMPROVEMENTS	Mount Construction Company	1/30/2015	7/17/2016	Open	\$2,731,688	\$2,090,794	\$2,090,794	100.0%	100.0%
C-657A	Building Construction Management Task Order	Joseph Jingoli & Son, Inc.	10/27/2014	10/26/2017	Open	\$300,000	\$142,436	\$53,328	25.0%	37.4%
C-684A-1	Professional Engineering Services General Engineering Consultant 2015-2016 Annual Inspection	Cherry, Weber & Associate, PC	2/23/2015	12/31/2017	Open	\$420,000	\$382,540	\$86,811	25.0%	22.7%
C-660A	Scudder Falls Bridge Replacement Project Design Services	Michael Baker International, Inc.	2/23/2015	12/31/2022	Open	\$22,490,000	\$20,590,593	\$4,889,788	25.2%	23.7%
T-661A	Scudder Falls Bridge Replacement Subsurface Boring & Sampling Contract	TRC Engineers, Inc.	5/18/2015	5/18/2017	Open	\$1,559,275	\$1,433,942	\$234,466	26.0%	16.4%

## Delaware River Joint Toll Bridge Commission

### Meeting of January 30, 2017

Contract Number	Contract Title	Business Name	Date Start	Date End	Status	Contract Value	Payments Total Prime	Payments Total For Credit	Goal	Util.
TS-677A	Scudder Falls Toll-Supported Bridge Interim Deck Repairs	Sparwick Contracting, Inc	5/18/2015	11/20/2018	Open	\$916,696	\$715,578	\$715,578	100.0%	100.0%
T-514A	District 3 Toll Bridge Facilities Emergency Standby Generators Improvements	West Side Electrical	7/27/2015	1/8/2017	Open	\$680,480	\$644,686	\$197,339	29.0%	30.6%
C-508A	DRJTBC Professional Engineering Services for I-78 Maintenance Garage Expansion	Burns Engineering, Inc	7/27/2015	9/30/2018	Open	\$686,117	\$585,820	\$272,509	44.5%	46.5%
C-663A	Pre-Construction Traffic Study for the SFB Replacement Project	PENNONI ASSOCIATES INC	7/27/2015	4/20/2017	Open	\$248,468	\$219,339	\$0	36.5%	0.0%
C-662A	Public Involvement Consultant Services Scudder Falls Interim Deck Repairs	McCormick Taylor, Inc.	9/28/2015	12/30/2021	Open	\$1,800,017	\$422,320	\$38,186	45.0%	9.0%
DB-540A	Electronic Toll Collection System Replacement Design, Build and Maintain	TransCore, LP	9/28/2015	9/13/2021	Open	\$24,047,349	\$1,904,044	\$358,534	11.3%	18.8%
C-696A	Professional Engineering Services for Facilities Task Order agreement - PA Assignment	Johnson, Mirmiran & Thompson, Inc.	10/26/2015	10/26/2017	Open	\$500,000	\$10,077	\$0	30.0%	0.0%
C-650A	Riverton-Belvidere Toll-Supported Bridge Critical Members Strengthening Design	AMMANN & WHITNEY CONSULTING ENGINEERS P C	10/26/2015	1/16/2017	Open	\$517,539	\$419,333	\$86,439	25.8%	20.6%
T-667A	TREE CLEARING CONTRACT SCUDDER FALLS BRIDGE	A P CONSTRUCTION, INC	11/25/2015	1/6/2017	Open	\$1,814,999	\$742,152	\$446,275	25.0%	60.1%
T-641A	Easton Phillipsburg Toll Bridge Ramp C Stabilization	Merco Inc	12/28/2015	6/2/2016	Open	\$1,130,000	\$998,300	\$0	100.0%	0.0%

## Delaware River Joint Toll Bridge Commission

### Meeting of January 30, 2017

Contract Number	Contract Title	Business Name	Date Start	Date End	Status	Contract Value	Payments Total Prime	Payments Total For Credit	Goal	Util.
CM-508A	I-78 Maintenance Garage Expansion, CMS	STV Incorporated	3/1/2016	11/1/2017	Open	\$586,403	\$114,580	\$4,195	31.8%	3.7%
CM-664A	Construction Management and Constructability Review Svcs. for the Scudder Falls Bridge PA Noise Walls Construction	GREENMAN-PEDERSEN INC	2/29/2016	3/30/2017	Open	\$912,693	\$377,913	\$8,238	29.8%	2.2%
C-644A	Design Svcs. for the I78 Bridges and Approach Slab Rehabilitation	Gannett Fleming, Inc.	2/29/2016	11/23/2016	Open	\$651,157	\$104,381	\$0	25.0%	0.0%
C-701A	Electronic Toll Collection / Tolling Task Order Assignment Consultant (PA Assignment)	Rummel, Klepper & Kahl, LLP	3/28/2016	3/28/2018	Open	\$500,000	\$0	\$0	25.0%	0.0%
T-705A	I-78 Toll Plaza Bumper Block Replacement	Sparwick Contracting, Inc	3/28/2016	5/22/2016	Open	\$160,006	\$0	\$0	0.0%	0.0%
T-666A	PA NOISE WALLS SCUDDER FALLS BRIDGE (SFB)	PKF-MARK III INCORPORATED	3/1/2016	4/20/2017	Open	\$11,394,750	\$3,566,580	\$347,057	25.0%	9.7%
T-508A	I-78 Maintenance Garage Expansion	Bracy Construction	6/28/2016	10/27/2016	Open	\$10,049,000	\$763,968	\$0	22.8%	0.0%
CI-665A	Construction Inspection Services for SFB PA Noise Walls Construction	Jacobs Engineering	3/29/2016	1/13/2017	Open	\$626,965	\$113,444	\$29,282	25.3%	25.8%
TS-650A	Riverton-Belvidere TSB Critical Member Strengthening	Road -Con, Inc	7/19/2016	11/11/2016	Open	\$708,707	\$171,472	\$0	11.2%	0.0%
C-696B	Facilities Task Order Agreement - NJ Assignment	FRENCH & PARRELLO ASSOCIATES, PA	7/18/2016	7/31/2018	Open	\$500,000	\$0	\$0	0.0%	0.0%
C-702B	Structural/Civil Task Order Agreement - NJ Assignment	IH Engineers PC	10/31/2016	10/31/2018	Open	\$1,000,000	\$0	\$0	60.0%	0.0%

# Delaware River Joint Toll Bridge Commission

## Meeting of January 30, 2017

### PRIMES AND SUBCONTRACTORS ON ACTIVE CONTRACTS

Contract Number	Contract Description	Prime Contractor	Contract Type	Vendor Type	Subcontractor	Ethnicity	Gender	For Credit	Contract Amount	Contract Goal Percent	Sub-contract Award	Sub-contract Percent
C-508A	DRJTBC Professional Engineering Services for I-78 Maintenance Garage Expansion	Burns Engineering, Inc	Professional Services	Prime	Burns Engineering, Inc			No	\$686,117	44.50%		
			Professional Services	Subcontractor	American Engineers Group, LLC	AsianIndian	Male	Yes			\$24,014	3.50%
			Professional Services	Subcontractor	Malick & Scherer, P.C.	AsianIndian	Male	Yes			\$109,779	16.00%
			Professional Services	Subcontractor	Sowinski Sullivan Architects, PC	Caucasian	Female	Yes			\$171,529	25.00%
C-644A	Design Svcs. for the 178 Bridges and Approach Slab Rehabilitation	Gannett Fleming, Inc.	Professional Services	Prime	Gannett Fleming, Inc.	Other		No	\$651,157	25.00%		
			Professional Services	Subcontractor	Malick & Scherer, P.C.	AsianIndian	Male	Yes			\$65,116	10.00%
			Professional Services	Subcontractor	SJH Engineering, P.C.	AsianPacific	Male	Yes			\$97,674	15.00%
C-650A	Riverton-Belvidere Tool-Supported Bridge Critical Members Strengthening Design	AMMANN & WHITNEY CONSULTING ENGINEERS PC	Professional Services	Prime	AMMANN & WHITNEY CONSULTING ENGINEERS P C			No	\$517,539	25.80%		
			Professional Services	Subcontractor	Pickering, Corts & Summerson			Yes			\$133,525	25.80%
C-657A	Building Construction Management Task Order	Joseph Jingoli & Son, Inc.	Professional Services - Task Order	Prime	Joseph Jingoli & Son, Inc.			No	\$300,000	25.00%		
			Professional Services - Task Order	Subcontractor	Burriss Engineers, Inc.	Black	Male	Yes			\$0	0.00%
			Professional Services - Task Order	Subcontractor	JBC Associates, Inc.	Caucasian	Female	Yes			\$0	0.00%
			Professional Services - Task Order	Subcontractor	STPCX, LLC	Hispanic	Male	Yes			\$0	0.00%
			Professional Services - Task Order	Subcontractor	USA Architects Panners and Interior Designers			Yes			\$0	0.00%
C-660A	Scudder Falls Bridge Replacement Project Design Services	Michael Baker International, Inc.	Professional Services	Prime	Michael Baker International, Inc.			No	\$22,490,000	25.20%		
			Professional Services	Subcontractor	AMY S GREENE ENVIRONMENTAL CONSULTANTS, INC.	Caucasian	Female	Yes			\$449,800	2.00%
			Professional Services	Subcontractor	French & Parrello Associates			Yes			\$1,506,830	6.70%
			Professional Services	Subcontractor	IH Engineers PC	AsianIndian	Male	Yes			\$2,383,940	10.60%

## Delaware River Joint Toll Bridge Commission

### Meeting of January 30, 2017

Contract Number	Contract Description	Prime Contractor	Contract Type	Vendor Type	Subcontractor	Ethnicity	Gender	For Credit	Contract Amount	Contract Goal Percent	Sub-contract Award	Sub-contract Percent
			Professional Services	Subcontractor	Naik Consulting Group, P.C.	AsianIndian	Male	Yes			\$1,326,910	5.90%
			Professional Services	Subcontractor	Stokes Creative Group, Inc.	Caucasian	Female	Yes			\$427,310	1.90%
C-662A	Public Involvement Consultant Services Scudder Falls Interim Deck Repairs	McCormick Taylor, Inc.	Professional Services	Prime	McCormick Taylor, Inc.			No	\$1,800,017	45.00%		
			Professional Services	Subcontractor	Information Logistics, Inc	Caucasian	Female	Yes			\$180,002	10.00%
			Professional Services	Subcontractor	Stokes Creative Group, Inc.	Caucasian	Female	Yes			\$630,006	35.00%
C-663A	Pre-Construction Traffic Study for the SFB Replacement Project	PENNONI ASSOCIATES INC	Professional Services	Prime	PENNONI ASSOCIATES INC			No	\$248,468	36.50%		
			Professional Services	Subcontractor	Drive Engineering Corp.	Hispanic	Male	Yes			\$8,448	3.40%
			Professional Services	Subcontractor	TechniQuest Corporation	AsianIndian	Male	Yes			\$90,691	36.50%
C-684A-1	Professional Engineering Services General Engineering Consultant 2015-2016 Annual Inspection	Cherry, Weber & Associate, PC	Professional Services	Prime	Cherry, Weber & Associate, PC			No	\$420,000	25.00%		
			Professional Services	Subcontractor	SJH Engineering, P.C.	AsianPacific	Male	Yes			\$105,000	25.00%
C-696A	Professional Engineering Services for Facilities Task Order agreement - PA Assignment	Johnson, Mirmiran & Thompson, Inc.	Professional Services - Task Order	Prime	Johnson, Mirmiran & Thompson, Inc.			No	\$500,000	30.00%		
			Professional Services - Task Order	Subcontractor	ACT Engineers, Inc.	Caucasian	Female	Yes			\$25,000	5.00%
			Professional Services - Task Order	Subcontractor	AMERICAN GEOTECHNICAL & ENVIRONMENTAL SERVICES INC. (AGES, INC.)			Yes			\$25,000	5.00%
			Professional Services - Task Order	Subcontractor	BATTA ENVIRONMENTAL ASSOCIATES, INC.	Asian	Male	Yes			\$25,000	5.00%
			Professional Services - Task Order	Subcontractor	Envision Consultants, LTD	Caucasian	Female	Yes			\$25,000	5.00%
			Professional Services - Task Order	Subcontractor	SJH Engineering, P.C.	AsianPacific	Male	Yes			\$25,000	5.00%
			Professional Services - Task Order	Subcontractor	TRAFFIC PLANNING & DESIGN INC			Yes			\$25,000	5.00%
C-696B	Facilities Task Order Agreement - NJ Assignment	FRENCH & PARRELLO ASSOCIATES, PA		Prime	FRENCH & PARRELLO ASSOCIATES, PA			No	\$500,000	0.00%		

## Delaware River Joint Toll Bridge Commission

### Meeting of January 30, 2017

Contract Number	Contract Description	Prime Contractor	Contract Type	Vendor Type	Subcontractor	Ethnicity	Gender	For Credit	Contract Amount	Contract Goal Percent	Sub-contract Award	Sub-contract Percent
C-701A	Electronic Toll Collection / Tolling Task Order Assignment Consultant (PA Assignment)	Rummel, Klepper & Kahl, LLP	Professional Services - Task Order	Prime	Rummel, Klepper & Kahl, LLP			No	\$500,000	25.00%		
			Professional Services - Task Order	Subcontractor	Fagan Consulting, LLC	Black	Male	Yes			\$50,000	10.00%
			Professional Services - Task Order	Subcontractor	KS Engineers, P.C.	AsianIndian	Male	Yes			\$35,000	7.00%
			Professional Services - Task Order	Subcontractor	Navarro & Wright Consulting Engineers, Inc.	Hispanic	Male	Yes			\$25,000	5.00%
			Professional Services - Task Order	Subcontractor	Spock Solutions, Inc.	Caucasian	Female	Yes			\$40,000	8.00%
C-702B	Structural/Civil Task Order Agreement - NJ Assignment	IH Engineers PC	Professional Services - Task Order	Prime	IH Engineers PC	AsianIndian	Male	No	\$1,000,000	60.00%		
CI-566A	Portland Columbia Toll Bridge Construction Inspection Services	Jacobs Engineering	Professional Services	Prime	Jacobs Engineering			No	\$532,349	36.42%		
			Professional Services	Subcontractor	Amercom Corp. Consulting Engineers	AsianPacific	Male	Yes			\$167,956	31.55%
			Professional Services	Subcontractor	Naik Consulting Group, P.C.	AsianIndian	Male	Yes			\$25,925	4.87%
CI-665A	Construction Inspection Services for SFB PA Noise Walls Construction	Jacobs Engineering	Professional Services	Prime	Jacobs Engineering			No	\$626,965	25.26%		
			Professional Services	Subcontractor	IH Engineers PC	AsianIndian	Male	Yes			\$90,283	14.40%
			Professional Services	Subcontractor	RIG Consulting, Inc.	Caucasian	Female	Yes			\$68,088	10.86%
CM-508A	I-78 Maintenance Garage Expansion, CMS	STV Incorporated	Professional Services	Prime	STV Incorporated	Caucasian	Male	No	\$586,403	31.83%		
			Professional Services	Subcontractor	Envision Consultants, LTD	Caucasian	Female	Yes			\$87,198	14.87%
			Professional Services	Subcontractor	HRV CONFORMANCE VERIFICATION ASSOCIATES, INC.	Caucasian	Female	Yes			\$15,364	2.62%
			Professional Services	Subcontractor	IH Engineers PC	AsianIndian	Male	Yes			\$84,090	14.34%
CM-664A	Construction Management and Constructability Review Svcs. for the Scudder Falls Bridge PA Noise Walls Construction	GREENMAN-PEDERSEN INC	Professional Services	Prime	GREENMAN-PEDERSEN INC			No	\$912,693	29.80%		
			Professional Services	Subcontractor	Envision Consultants, LTD	Caucasian	Female	Yes			\$47,460	5.20%

## Delaware River Joint Toll Bridge Commission

### Meeting of January 30, 2017

Contract Number	Contract Description	Prime Contractor	Contract Type	Vendor Type	Subcontractor	Ethnicity	Gender	For Credit	Contract Amount	Contract Goal Percent	Sub-contract Award	Sub-contract Percent
			Professional Services	Subcontractor	Keegan Technology & Testing Assocs., Inc.			Yes			\$33,770	3.70%
			Professional Services	Subcontractor	Naik Consulting Group, P.C.	AsianIndian	Male	Yes			\$167,023	18.30%
			Professional Services	Subcontractor	SAFEGATE ASSOCIATES LLC D/B/A APPLGATE ASSOCIATES			Yes			\$23,730	2.60%
DB-540A	Electronic Toll Collection System Replacement Design, Build and Maintain	TransCore, LP	Professional Services	Prime	TransCore, LP			No	\$24,047,349	11.33%		
			Professional Services	Subcontractor	All Points Communications, Inc.	Caucasian	Female	Yes			\$781,539	3.25%
			Professional Services	Subcontractor	Arora Engineers, Inc.	AsianIndian	Male	Yes			\$16,112	0.07%
			Professional Services	Subcontractor	Globe Electric Supply Company, INC	Caucasian	Female	Yes			\$543,470	2.26%
			Professional Services	Subcontractor	Jen Electric, Inc.	Caucasian	Female	Yes			\$848,871	3.53%
			Professional Services	Subcontractor	KS Engineers, P.C.	AsianIndian	Male	Yes			\$110,618	0.46%
			Professional Services	Subcontractor	Red Wagon Printing, LLC	Caucasian	Female	Yes			\$16,833	0.07%
			Professional Services	Subcontractor	Sharpened Image, Inc.	Black	Female	Yes			\$149,094	0.62%
			Professional Services	Subcontractor	SJH Engineering, P.C.	AsianPacific	Male	Yes			\$12,024	0.05%
			Professional Services	Subcontractor	SJH Engineering, P.C.	AsianPacific	Male	Yes			\$14,500	0.06%
			Professional Services	Subcontractor	Traffic Control Services, LLC	Caucasian	Female	Yes			\$100,999	0.42%
T-508A	I-78 Maintenance Garage Expansion	Bracy Construction	Construction	Prime	Bracy Construction		Male	No	\$10,049,000	22.76%		
			Construction	Subcontractor	Ankiewicz Enterprises			No			(\$933,552)	-9.29%
			Construction	Subcontractor	CA Weiss Sales, LLC	Caucasian	Female	Yes			\$275,343	2.74%
			Construction	Subcontractor	Central Penn Welding & Ironworks	Black	Male	Yes			\$7,286	0.07%
			Construction	Subcontractor	Dewalt Plumbing		Male	No			(\$120,990)	-1.20%
			Construction	Subcontractor	Fox Quality Roofing		Male	No			(\$275,343)	-2.74%
			Construction	Subcontractor	GAVER INDUSTRIES INC			Yes			\$1,216,934	12.11%
			Construction	Subcontractor	Ida Yeager Sales, Inc.	Caucasian	Female	Yes			\$120,990	1.20%
			Construction	Subcontractor	Ida Yeager Sales, Inc.	Caucasian	Female	Yes			\$178,872	1.78%
			Construction	Subcontractor	Labe Sales, Inc.	Caucasian	Female	Yes			\$100,490	1.00%
			Construction	Subcontractor	Penn State Electric Mechanical Supply Co, Inc.	AsianIndian	Male	Yes			\$117,875	1.17%
			Construction	Subcontractor	Reeb Building Systems	Caucasian	Female	Yes			\$279,965	2.79%



# Delaware River Joint Toll Bridge Commission

## Meeting of January 30, 2017

Contract Number	Contract Description	Prime Contractor	Contract Type	Vendor Type	Subcontractor	Ethnicity	Gender	For Credit	Contract Amount	Contract Goal Percent	Sub-contract Award	Sub-contract Percent
			Construction	Subcontractor	Reeb Building Systems	Caucasian	Female	Yes			\$200,980	2.00%
			Construction	Subcontractor	Reeb Building Systems	Caucasian	Female	Yes			\$28,137	0.28%
			Construction	Subcontractor	Reeb Building Systems	Caucasian	Female	Yes			\$150,735	1.50%
			Construction	Subcontractor	Rubright Construction Inc			No			\$0	0.00%
			Construction	Subcontractor	Steel Fab Enterprises		Male	No			(\$7,286)	-0.07%
			Construction	Subcontractor	Supreme Ceilings Inc			No			\$0	0.00%
			Construction	Subcontractor	TA Silfies Masonry			No			\$100,490	1.00%
			Construction	Subcontractor	Tracorp	Caucasian	Female	Yes			\$51,250	0.51%
			Construction	Subcontractor	Tri County Mechanical		Male	No			(\$559,327)	-5.57%
			Construction	Subcontractor	TURTLE & HUGHES INC	Caucasian	Female	Yes			\$1,005	0.01%
			Construction	Subcontractor	Wind Gap Electric		Male	No			(\$118,880)	-1.18%
			Construction	Subcontractor	YCP, Inc.	Caucasian	Female	Yes			\$28,137	0.28%
T-514A	District 3 Toll Bridge Facilities Emergency Standby Generators Improvements	West Side Electrical	Construction	Prime	West Side Electrical			No	\$680,480	29.00%		
			Construction	Subcontractor	Penn State Electric Mechanical Supply Co, Inc.	AsianIndian	Male	Yes			\$197,339	29.00%
T-641A	Easton Phillipsburg Toll Bridge Ramp C Stabilization	Merco Inc	Construction	Prime	Merco Inc	Caucasian	Male	No	\$1,130,000	100.00%		
T-661A	Scudder Falls Bridge Replacement Subsurface Boring & Sampling Contract	TRC Engineers, Inc.	Construction	Prime	TRC Engineers, Inc.	Caucasian	Male	No	\$1,559,275	26.00%		
			Construction	Subcontractor	Burgette Excavation, LLC t/a Traffic Regulators	Black	Male	Yes			\$233,891	15.00%
			Construction	Subcontractor	Garden State Highway Products, Inc.	Caucasian	Female	Yes			\$171,520	11.00%
T-666A	PA NOISE WALLS SCUDDER FALLS BRIDGE (SFB)	PKF-MARK III INCORPORATED	Construction	Prime	PKF-MARK III INCORPORATED			No	\$11,394,750	25.00%		
			Construction	Subcontractor	Sanders Construction Co., Inc.	AsianPacific	Female	Yes			\$2,848,688	25.00%
T-667A	TREE CLEARING CONTRACT SCUDDER FALLS BRIDGE	A P CONSTRUCTION, INC	Construction	Prime	A P CONSTRUCTION, INC	Caucasian	Male	No	\$1,814,999	25.00%		
			Construction	Subcontractor	Athena Contracting, Inc	Caucasian	Female	Yes			\$181,500	10.00%
			Construction	Subcontractor	Sable Construction, Inc.	Black	Male	Yes			\$272,250	15.00%

## Delaware River Joint Toll Bridge Commission

### Meeting of January 30, 2017

Contract Number	Contract Description	Prime Contractor	Contract Type	Vendor Type	Subcontractor	Ethnicity	Gender	For Credit	Contract Amount	Contract Goal Percent	Sub-contract Award	Sub-contract Percent
T-705A	I-78 Toll Plaza Bumper Block Replacement	Sparwick Contracting, Inc		Prime	Sparwick Contracting, Inc	Caucasian	Male	No	\$160,006	0.00%		
TS-639B	LOWER TRENTON TOLL SUPPORTED BRIDGE APPROACH AND ROADWAY IMPROVEMENTS	Mount Construction Company	Construction	Prime	Mount Construction Company			Yes	\$2,731,688	100.00%		
			Construction	Prime Self Performing	Mount Construction Company			Yes			\$2,731,688	100.00%
TS-650A	Riverton-Belvidere TSB Critical Member Strengthening	Road -Con, Inc	Construction	Prime	Road -Con, Inc			No	\$708,707	11.23%		
			Construction	Subcontractor	DESILVIO & COMPANY, INC.	Caucasian	Female	Yes			\$18,426	2.60%
			Construction	Subcontractor	Established Traffic Control, Inc.	Other	Female	Yes			\$5,174	0.73%
			Construction	Subcontractor	RAM-T CORPORATION	Caucasian	Female	Yes			(\$4,252)	-0.60%
			Construction	Subcontractor	Williams Flagger Logistics, LLC	Black	Male	Yes			\$41,814	5.90%
TS-677A	Scudder Falls Toll-Supported Bridge Interim Deck Repairs	Sparwick Contracting, Inc	Construction	Prime	Sparwick Contracting, Inc	Caucasian	Male	No	\$916,696	100.00%		
			Construction	Prime Self Performing	Sparwick Contracting, Inc	Caucasian	Male	Yes			\$916,696	100.00%