

DELAWARE RIVER
JOINT TOLL BRIDGE COMMISSION
MINUTES
MEETING OF DECEMBER 20, 2010

DELAWARE RIVER JOINT TOLL BRIDGE COMMISSION

MEMBERS OF THE COMMISSION

NEW JERSEY

HONORABLE DAVID R. DEGEROLAMO
Chairman

HONORABLE DONALD HART

HONORABLE HARRY ZIKAS, JR

HONORABLE WILLIAM J. HODAS

HONORABLE YUKI MOORE LAURENTI

PENNSYLVANIA

HONORABLE GAETAN J. ALFANO
Vice Chairman

HONORABLE MELISSA HELLER

HONORABLE JAMES L. BROUGHAL
Secretary-Treasurer

HONORABLE BERNARD GRIGGS, JR.

HONORABLE JOHN PREVOZNIK

Revised 6/18/10

X:\Wendy's Files\Commission Mtgs from.2003 to present\Committee Pages\Current\Mbrs of the Commission (1) 6-29-09-
Corrected 6-18-10.doc

DELAWARE RIVER JOINT TOLL BRIDGE COMMISSION

STANDING COMMITTEES

FINANCE, INSURANCE, MANAGEMENT OPERATIONS

PENNSYLVANIA: Alfano, Broughal
NEW JERSEY: Hart*, Zikas
Chairman-Ex Officio

HUMAN RESOURCES, AFFIRMATIVE ACTION AND TRAINING AND SAFETY

PENNSYLVANIA: Griggs, Broughal
NEW JERSEY: Hodas*, Laurenti
Chairman and Vice Chairman Ex-Officio

PROJECTS, PROPERTY AND EQUIPMENT

PENNSYLVANIA: Griggs*, Alfano
NEW JERSEY: Hart, Hodas
Chairman – Ex-Officio

PROFESSIONAL SERVICES COMMITTEE

PENNSYLVANIA: Alfano*, Heller
NEW JERSEY: Laurenti, Zikas
Chairman – Ex Officio

AUDIT COMMITTEE

PENNSYLVANIA: Prevoznik*, Heller,
NEW JERSEY: Zikas, Hart
Chairman and Vice Chairman Ex-Officio

ADMINISTRATIVE COMMITTEE

PENNSYLVANIA: Griggs, Broughal,
NEW JERSEY: Laurenti*, Hodas
Chairman and Vice Chairman Ex-Officio

CAI COMMITTEE

PENNSYLVANIA: Alfano, Broughal
NEW JERSEY: DeGerolamo*, Hart

CONTRACTS SUB-COMMITTEE

PENNSYLVANIA: Griggs*, Alfano
NEW JERSEY: DeGerolamo, Hodas

*Chairman of Committee

**DELAWARE RIVER JOINT TOLL BRIDGE COMMISSION
RECAPITULATION OF COMMITTEE MEMBERSHIP**

DeGerolamo	(1)	Ex-Officio of all Committees
Alfano	(1)	Finance, Insurance, Management Operations Committee
	(2)	Projects, Property and Equipment Committee
	(3)	Contracts Sub-Committee
	(4)	Professional Services Committee
	*	Ex-Officio of all Committees
Broughal	(1)	Finance, Insurance, Management Operations Committee
	(2)	Human Resources, Affirmative Action and Training and Safety Committee
	(3)	CAI Committee
	(4)	Administrative Committee
Griggs	(1)	Human Resources, Affirmative Action and Training and Safety Committee
	(2)	Projects, Property and Equipment Committee (Chairman)
	(3)	Contracts Sub-Committee (Chairman)
	(4)	Administrative Committee
Hart	(1)	Finance, Insurance Management and Operations Committee (Chairman)
	(2)	Projects, Property and Equipment Committee
	(3)	CAI Committee
	(4)	Audit Committee
Heller	(1)	Professional Services Committee
	(2)	Audit Committee
Hodas	(1)	Human Resources, Affirmative Action and Training and Safety Committee (Chairman)
	(2)	Projects, Property and Equipment Committee
	(3)	Contracts Sub-Committee
	(4)	Administrative Committee
Laurenti	(1)	Human Resources, Affirmative Action and Training and Safety Committee
	(2)	Professional Services Committee
	(3)	Administrative Committee (Chairman)
Prevoznik	(1)	Audit Committee (Chairman)
Zikas	(1)	Finance, Insurance, Management Operations Committee
	(2)	Professional Services
	(2)	Audit Committee

DELAWARE RIVER JOINT TOLL BRIDGE COMMISSION

PROFESSIONAL ASSOCIATES

CONSULTING ENGINEERS

TRANSYSTEMS CONSULTING ENGINEERS
Paramus, New Jersey

LEGAL COUNSEL

FOX ROTHSCHILD, LLP
Philadelphia, Pennsylvania

FLORIO, PERRUCCI, STEINHARDT & FADER
Phillipsburg, New Jersey

EMPLOYMENT COUNSEL

STRADLEY, RONON, STEVENS & YOUNG
Philadelphia, Pennsylvania

WOLFF AND SAMSON
West Orange, New Jersey

AUDITOR

BOWMAN & COMPANY
Voorhees, New Jersey

FINANCIAL ADVISOR

NW FINANCIAL GROUP
Jersey City, New Jersey

COMMUNICATIONS CONSULTANT

BELLEVUE COMMUNICATIONS
Philadelphia, Pennsylvania

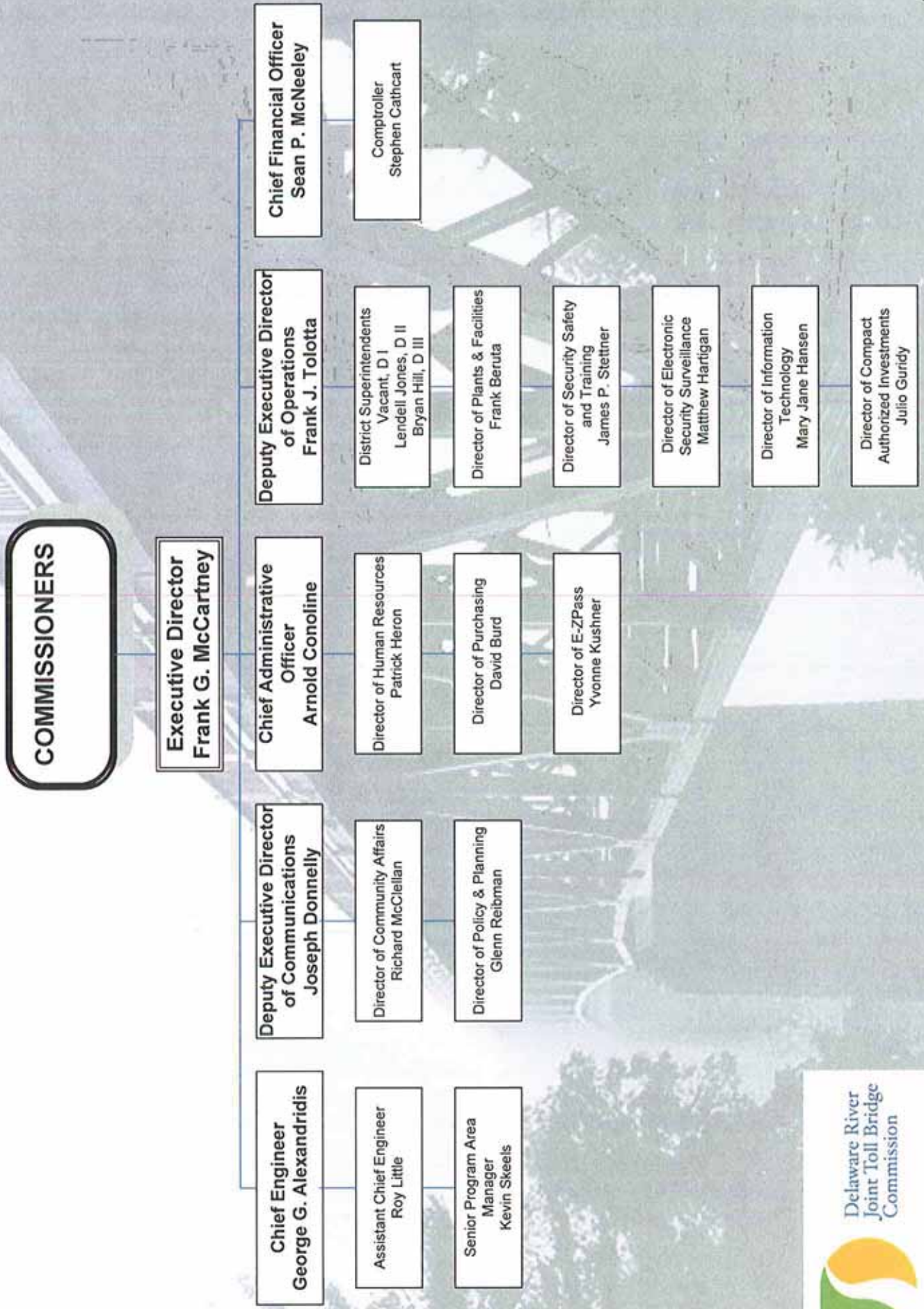
INVESTMENT ADVISOR

TD BANK
Pennsylvania

Revised 2009

DELAWARE RIVER JOINT TOLL BRIDGE COMMISSION

ORGANIZATION CHART



DELAWARE RIVER JOINT TOLL BRIDGE COMMISSION

Meeting of December 20, 2010

INDEX TO MINUTES

	PAGE
1. Call to Order	1
2. Appearances.....	1 - 2
3. Roll Call.....	2
4. Welcoming Remarks of Chairman	2
5. Introduce any Comments from the Public	2
6. Executive Director's Report	2 - 4
7. Approval of Minutes for Commission Meeting held November 22, 2010	4
8. Approval of Operations Report for The Month of November 2010	5
9. Approve the MBE/WBE/SBE Pilot Programs to permanent status.....	5 - 6
10. Increase weight limit on Riegelsville Toll Supported Bridge	6 - 7
11. Acceptance of 2010 Annual Inspection Report Submitted by the General Engineering Consultant	7
12. Award of Contract for I-78 Roadway Median Improvements-PA contract DB-526A, to M.L. Ruberton Construction	7

DELAWARE RIVER JOINT TOLL BRIDGE COMMISSION

Meeting of December 20, 2010

INDEX TO MINUTES

	PAGE
13. Award of Contract for I-78 Roadway Median Improvements-NJ Contract DB-563A, to Fletcher Creamer & Sons Inc.....	8
14. Approval of Temporary Budget for 2011	8 - 9
15. Approval of 2010 Other Post- Employment Benefits Trust contribution	9
16. Appointment of Bowman & Company To perform a Financial Audit for the 2010 Financial Year	9 - 10
17. Award of Contract for Consulting Services To review the Commission's Toll Revenue Reporting processes to Clifton Gunderson Inc.	10
18. Renewal of NEBCO Retiree Medical and Prescription Insurance 1/1/11-12/31/11	10 - 11
19. Appointment of AON, Broker of Record For business related insurance with a contract Term of 18 months.....	11
20. Approval for payment of invoice Wolff & Samson	12
21. Approval for Payment of Invoice Stradley Ronan, PA Labor Counsel	12
22. Approval for Payment of Invoice Florio, Perucci, Steinhart and Fader	13
23. Approval for Payment of Invoice Fox Rothschild, PA Legal Counsel.....	13
24. Approval for Payment of Invoice Citrin Cooperman & Company, LLP	14

DELAWARE RIVER JOINT TOLL BRIDGE COMMISSION

Meeting of December 20, 2010

INDEX TO MINUTES

	PAGE
25. Approval for Payment of Invoice Bowman & Company	14
26. Invite any Comments from Public	15
27. Scheduling of the January 2011 Meeting	15
28. Adjournment	15

DELAWARE RIVER JOINT TOLL BRIDGE COMMISSION

Meeting of December 20, 2010

CALL TO ORDER

The Regular Monthly Meeting of the Delaware River Joint Toll Bridge Commission was Called to Order at the New Hope Headquarters and Administration Building, 2492 River Road, New Hope, Pa. 18938-9579 in the Boardroom, on Monday, December 20, 2010, 2010 at 11:05 am pursuant to notice properly forwarded to each member in compliance with the By-Laws. David DeGerolamo, Chairman, presided at this Meeting. The Commission met in Executive Session to discuss legal and personnel matters prior to this meeting.

APPEARANCES

COMMISSION MEMBERS:

Hon. Gaetan Alfano (Pennsylvania) (Via Conference Call)
Hon. James L. Broughal (Pennsylvania)
Hon. David DeGerolamo (New Jersey)
Hon. Donald Hart (New Jersey)
Hon. Melissa Heller (Pennsylvania)
Hon. William Hodas (New Jersey)
Hon. Bernard Griggs (Pennsylvania)
Hon. John Prevoznik (Pennsylvania)
Hon. Yuki Moore Laurenti (New Jersey)
Hon. Harry Zikas, Jr. (New Jersey) (Via Conference Call)

COMMISSION GENERAL COUNSEL:

Marcel L. Groen, Fox Rothschild Pennsylvania Legal Counsel
Levin Czubaroff, Fox Rothschild Pennsylvania Legal Counsel

COMMISSION LABOR COUNSEL:

Jonathan Bloom, Stradley Ronon, Pennsylvania Labor Counsel
John Casey, Wolff and Samson, New Jersey Employment Counsel

GOVERNORS REPRESENTATIVES:

Maura Tully, NJ Governor's Authority Unit
Alex Ficken, Pennsylvania

REPRESENTING THE COMMISSION'S COMMUNICATIONS CONSULTANTS: BELLEVUE COMMUNICATIONS

Pete Peterson, Bellevue Communications

DELAWARE RIVER JOINT TOLL BRIDGE COMMISSION

Meeting of December 20, 2010

COMMISSION STAFF MEMBERS:

Frank G. McCartney, Executive Director
Frank J. Tolotta, Deputy Executive Director of Operations
George Alexandridis, Chief Engineer
Sean McNeeley, Chief Financial Officer
Stephen Cathcart, Comptroller
Patrick Heron, Director of Human Resources
Richard McClellan, Acting Director of Community Affairs
Arnold Conoline, Chief Administrative Officer
Superintendents of Districts I, II, III
Assistant Superintendents of Districts I, II, III

OTHERS:

Curt Yeske, Trenton Times
Ryan Bevitz, State Representative Steve Santasiero's Office

ROLL CALL

Frank G. McCartney, Executive Director, in his capacity as Secretary for this Meeting, called the Roll, and at the conclusion thereof, reported that there was a quorum present- there being five members present from the Commonwealth of Pennsylvania and five members present from the State New Jersey.

WELCOMING REMARKS OF CHAIRMAN

Chairman DeGerolamo welcomed those persons whose identities are set forth hereinabove under "Appearances".

INTRODUCE ANY COMMENTS FROM THE PUBLIC

Chairman DeGerolamo addressed the meeting and invited any comments from the Public on items pertaining to today's Agenda.

EXECUTIVE DIRECTORS REPORT

Good Morning.

Thank you, Mr. Chairman...

With 11 days left in 2010, I want to use this opportunity to briefly report on the Commission's many noteworthy accomplishments of this past year. We have much to be proud about. In May, the Commission went live with its implementation of its MUNIS Enterprise Resource Management software. This marked the culmination of an extensive two-year planning, acquisition, conversion and training effort. Accounting, purchasing, budgeting and treasury management features of the new system were the first to be converted, this was later followed by capital program management, human resources, and asset management. The expansive software

DELAWARE RIVER JOINT TOLL BRIDGE COMMISSION

Meeting of December 20, 2010

upgrade is improving our accountability and management functions, and it is enabling us to improve our paper-reduction efforts. There are many people to credit, but I want to single out Chief Financial Officer Sean McNeeley who served as the project manager. I would also like to thank Information Technology Director Mary Jane Hansen for working through the many technical challenges this conversion presented, Plants and Facilities Director Frank Beruta, Purchasing Director David Burd, Comptroller Steve Cathcart, Human Resources Director Pat Heron and Engineering Financial Coordinator Justin Bowers all helped to make this a success.

Another noteworthy 2010 accomplishment is the continued progress we saw in the execution of our Capital Improvement Program. Four projects were completed on time and within budget, including : The installation of two Express E-ZPass lanes at the I-78 Toll Bridge – our first Open Road Tolling facility, The Calhoun Street Toll-Supported Bridge Rehabilitation (We understand that this project will soon be cited for an award in the new year), The Washington Crossing Toll-Supported Bridge Near-Term Improvements Project (on Friday we were able to hand over keys to a boat ramp that we constructed for the repairs ,to George Washington, Washington Crossing State Park and Lower Makefield Township. This ramp will save the Friends of the Park up to 6 thousand dollars in crane rental for the Durham boats for General Washington's trek across the river Christmas Day but more importantly this ramp will provide emergency access to Lower Makefield emergency personal for river rescues up to 5 minutes faster.) and a new salt shed, at The Portland-Columbia Toll Bridge Facility will enable us to better fight ice and snow and protect the environment. We have achieved substantial completion this past month on two more projects: The Delaware Water Gap (I-80) Toll Bridge Express E-ZPass/Open Road Tolling and The Riegelsville Toll-Supported Bridge Rehabilitation (Mark your calendars for rededication ceremony at the bridge on January 5 – weather permitting, also, today's agenda has resolution to increase load rating to 3 tons).

We have started rehabilitation projects at the Delaware Water Gap Toll Bridge and Upper Black Eddy-Milford Toll-Supported Bridge. On our customer service front, we have completed first full year of the Motorist Assistance Program (MAP). We have surpassed the 70,000 E-ZPass accounts threshold. The E-ZPass Violation Processing Center is on line. The removal of gates at all toll plazas has been completed. Nine more CAI projects have been completed and 23 project grants have been awarded. Last but not least – we have advanced the Scudder Falls Bridge Replacement Project further through the planning process pipeline.

I have one additional accomplishment to report to you today, a resolution to bestow permanent program status to our Minority, Women and Small Business Enterprise programs. I would like to point out that our total MWSBE commitment dollars more than doubled in 2010 from just over \$4 million in 2009 to almost \$10 million in 2010. We are exceeding the goals in each MWSBE category. I would like to Commend Chief Administrator Officer Arnie Conoline and MWSBE Project Manager Christine Baker for this achievement.

In closing – A Thank You for All Employees. By any standard of measure, 2010 was a year of quality performance, service and success. I want to thank all employees for their dedication and efforts, whether the individual was a maintenance worker plowing a road or patching a pothole, an engineer executing a bridge project, a toll collector making change for a dollar bill, a bridge officer turning around an oversized or overweight vehicle at a century-old truss bridge, or a

DELAWARE RIVER JOINT TOLL BRIDGE COMMISSION

Meeting of December 20, 2010

clerical worker processing a purchase order. It was the people at every level of this agency who helped to make 2010 a year of accomplishment that we can all be proud of.

I wish everyone a safe and satisfying holiday season and a Happy New Year.

Chairman DeGerolamo addressed the meeting and asked that the following comments become part of the official minutes:

"I would like everyone to know that the Audit Committee and its members have been working diligently to put together a Whistleblower Policy for the Delaware River Joint Toll Bridge Commission. The Audit Committee has brought forth to the full Commission a policy, however from time to time we refer to and ask for guidance from the Governors offices of both New Jersey and Pennsylvania, so at this time we are not ready to move forward with this policy. I want to put on record that the Audit Committee is working in that direction with the full Commission and we hope to have something in the very near future, hopefully in January. I would also like to take a moment to thank the Administrative Committee who have been working diligently on the OPEB Trust, which we are going to take action on today, which again is another item to protect our retirees and their future benefits that they will receive from the Commission and protecting our liabilities going forward. I would also like to thank all those members as well as the Commission for the work they do, so on behalf of our host Communities and our Employees Thank You."

APPROVAL OF MINUTES

FOR COMMISSION MEETING HELD NOVEMBER 22, 2010

R: 2150-12-10 - ADM-01-12-10

Chairman DeGerolamo addressed the meeting and invited the introduction of a Resolution approving the Minutes of the Commission Meeting held November 22, 2010.

At the conclusion of the review, Commissioner Broughal moved and Commissioner Hart seconded the adoption of the following Resolution:

"RESOLVED, by the Delaware River Joint Toll Bridge Commission at its Regular Meeting assembled this 20th day of December 2010, that the Minutes of the Commission Meeting held on November 22, 2010 be and the same hereby are approved."

Chairman DeGerolamo invited questions on the Resolution. No further questions were presented and the Resolution was unanimously adopted.

DELAWARE RIVER JOINT TOLL BRIDGE COMMISSION

Meeting of December 20, 2010

APPROVAL OF OPERATIONS REPORT FOR THE MONTH OF NOVEMBER 2010

R: 2151-12-10- ADM-02-12-10

Chairman DeGerolamo addressed the meeting and asked if there were any questions on any of the reports contained in the "Operations Report".

At the conclusion of the review, Commissioner Broughal moved and Commissioner Hart seconded the adoption of the following Resolution:

"RESOLVED, by the Delaware River Joint Toll Bridge Commission, at it's Regular Meeting assembled this 20th day of December 2010, that the Commission, via this Resolution, acknowledges receipt, understanding and authorizes filing of the report entitled, 'Operations Report, Month of November 2010, as set forth in the Supplement to the Minutes of this Meeting."

Chairman DeGerolamo invited questions on the Resolution. No questions were presented and the Resolution was unanimously adopted.

APPROVAL THE MBE/WBE/SBE PILOT PROGRAMS TO PERMANENT PROGRAM STATUS

R: 2152-12-10- ADM-03-12-10

Chairman DeGerolamo addressed the Meeting and asked the Commission Members if, after their review, there were any questions.

At the conclusion of the review, Commissioner Laurenti moved and Commissioner Broughal seconded the adoption of the following Resolution:

"WHEREAS, the Delaware River Joint Toll Bridge Commission (the "Commission) was created, as a body corporate and politic, by a compact between the State of New Jersey and the Commonwealth of Pennsylvania, with the consent of the Congress of the United States (the "Compact"); and

"WHEREAS, the Commission is responsible, among other powers and duties, to maintain and operate seven toll, and thirteen toll supported, bridges which cross the Delaware River between New Jersey and Pennsylvania; and

"WHEREAS, the Commission is engaged in a major capital program for, among other efforts, the Rehabilitation and Enhancement of its bridge infrastructure system; and

"WHEREAS, in order to protect the substantial investment the Commission has made, and continues to make, in said infrastructure, the Commission desires to provide equal employment and

DELAWARE RIVER JOINT TOLL BRIDGE COMMISSION

Meeting of December 20, 2010

contracting opportunities for all persons regardless of race, color, religion, sex, national origin, age or non-job related disability; and

"WHEREAS, in order to afford equal opportunity to all qualified firms to participate in the contract process and not be discriminated against on grounds of race, color religion, national origin, or non-job-related disability in regard to any Consultant or Construction Contracts related to the implementation of its Capital Program; and

"NOW, THEREFORE, be it resolved as follows by the Delaware River Joint Toll Bridge Commission, at its Regular Meeting assembled this 20th day of December 2010, that the Commission adopts a Resolution as follows:

- (1) The effective date of the MBE/WBE/SBE Program for Consultant and/or Construction contracts related to the implementation of the Commission's Capital Program shall be December 20th 2010.
- (2) The participation goals for this MBE/WBE/SBE Program shall be:
 - a. For Pennsylvania Consulting and all Construction Contract- 7% MBE and 3% WBE.
 - b. For New Jersey Consulting Contracts- 25% race and gender neutral related to the implementation of its Capital Program.
- (3) Said program shall continue until modified or revoked by further resolution of the Commission."

Chairman DeGerolamo invited questions on the Resolution. No questions were presented and the Resolution was unanimously adopted.

INCREASE WEIGHT LIMIT ON RIEGELSVILLE TOLL SUPPORTED BRIDGE

R: 2153-12-10- ADM-04-12-10

Chairman DeGerolamo addressed the Meeting and asked the Commission Members if, after their review, there were any questions.

At the conclusion of the review, Commissioner Laurenti moved and Commissioner Prevoznik seconded the adoption of the following Resolution:

"RESOLVED, by the Delaware River Joint Toll Bridge Commission at it's Regular Meeting assembled this 20th day of December 2010, that the Commission, via this resolution, authorize the Executive Director to increase the weight limit posting on Riegelsville Toll Supported Bridge from 2.5 tons to 3.0 tons effective December 21, 2010."

DELAWARE RIVER JOINT TOLL BRIDGE COMMISSION

Meeting of December 20, 2010

Chairman DeGerolamo invited questions on the Resolution. No questions were presented and the Resolution was unanimously adopted.

ACCEPTANCE OF 2010 ANNUAL INSPECTION REPORT SUBMITTED BY THE GENERAL ENGINEERING CONSULTANT

R: 2154-12-10- ENG-01-12-10

Chairman DeGerolamo addressed the Meeting and asked the Commission Members if, after their review, there were any questions.

At the conclusion of the review, Commissioner Hodas moved and Commissioner Laurenti seconded the adoption of the following Resolution:

"RESOLVED, by the Delaware River Joint Toll Bridge Commission, at its Regular Meeting assembled this 20th day of December 2010, that the Commission, via this Resolution, authorizes receipt, filing and acceptance of 2010 Annual Inspection Report as prepared by the Commission's General Engineering Consultant, TransSystems."

Chairman DeGerolamo invited questions on the Resolution. No questions were presented and the Resolution was unanimously adopted.

AWARD OF CONTRACT FOR I-78 ROADWAY MEDIAN IMPROVEMENTS- PA, CONTRACT DB-562A, TO M.L. RUBERTON CONSTRUCTION

R: 2155-12-10- ENG-02-12-10

Chairman DeGerolamo addressed the Meeting and asked the Commission Members if, after their review, there were any questions.

At the conclusion of the review, Commissioner Broughal moved and Commissioner Hart seconded the adoption of the following Resolution:

"RESOLVED, by the Delaware River Joint Toll Bridge Commission, at it's Regular Meeting assembled this 20th day of December 2010, that the Commission, via this Resolution, award the design-build Contract No. DB-562A, I-78 Roadway Median Improvements- PA to the lowest responsible bidder, M.L. Ruberton Construction Co. from Folsom, NJ for the amount of \$409,492.68 and;

"RESOLVED, identify the General Reserve Fund as the source of funds required for payment of any invoices and be it;

"FURTHER RESOLVED: The Executive Director is hereby authorized to approve and execute all necessary contract on behalf of the DRJTBC."

Chairman DeGerolamo invited questions on the Resolution. No questions were presented and the Resolution was unanimously adopted.

DELAWARE RIVER JOINT TOLL BRIDGE COMMISSION

Meeting of December 20, 2010

AWARD OF CONTRACT, FOR I-78 ROADWAY MEDIAN IMPROVEMENTS- NJ, CONTRACT DB-563A, TO J. FLETCHER CREAMER & SONS INC.

R: 2156-12-10 – ENG-03-12-10

Chairman DeGerolamo addressed the Meeting and asked the Commission Members if, after their review, there were any questions.

Commissioner Hart addressed the meeting and requested to be recorded as abstaining from this vote

At the conclusion of the review, Commissioner Hodas moved and Commissioner Broughal seconded the adoption of the following Resolution:

"RESOLVED, by the Delaware River Joint Toll Bridge Commission, at it's Regular Meeting assembled this 20th day of December 2010, that the Commission, via this Resolution, award the design-build Contract No. DB-563A, I-78 Roadway Median Improvements- NJ to the lowest responsible bidder, J. Fletcher Creamer & Son, Inc. from Folsom, NJ for the amount of \$1,488,717.00 and;

"RESOLVED, identify the General Reserve Fund as the source of funds required for payment of any invoices and be it;

"FURTHER RESOLVED: The Executive Director is hereby authorized to approve and execute all necessary contract on behalf of the DRJTBC."

Chairman DeGerolamo invited questions on the Resolution. No questions were presented and the Resolution was adopted.

APPROVAL OF TEMPORARY BUDGET FOR 2011

R: 2157-12-10 – FIN-03-12-10

Chairman DeGerolamo addressed the Meeting and asked the Commission Members if, after their review, there were any questions.

At the conclusion of the review Commissioner Prevoznik moved and Commissioner Hodas seconded the adoption of the following Resolution:

"RESOLVED, by the Delaware River Joint Toll Bridge Commission, at it's Regular Meeting assembled this 20th day of December 2010, that the Commission, via this Resolution, adopts a Temporary Budget covering January 1, 2011 through March 31, 2011 to provide Delaware River Joint Toll Bridge Commission with operating funds until the adoption of the 2011 budget."

DELAWARE RIVER JOINT TOLL BRIDGE COMMISSION

Meeting of December 20, 2010

Chairman DeGerolamo invited questions on the Resolution. No questions were presented and the Resolution was unanimously adopted.

APPROVAL OF 2010 OTHER POST-EMPLOYMENT BENEFITS TRUST CONTRIBUTION

R: 2158-12-10 – FIN-04-12-10

Chairman DeGerolamo addressed the Meeting and asked the Commission Members if, after their review, there were any questions.

At the conclusion of the review Commissioner Laurenti moved and Commissioner Broughal seconded the adoption of the following Resolution:

"RESOLVED, by the Delaware River Joint Toll Bridge Commission, at it's Regular Meeting assembled this 20th day of December 2010, that the Commission, via this Resolution, is authorized to make an additional contribution of \$21,000,000 to the OPEB Trust, which contribution shall be made as soon as practicable prior to December 31, 2010."

Vice Chairman Alfano addressed the meeting and stated:

"I think it is important that everyone at the meeting appreciate the fact this issue was a very carefully thought out and highly debated among the Commission. In taking this step we are impacting our liquidity, particularly with our tolls at the current levels and with all the other expenses that we as a Commission are facing. Unfortunately we are not immune to the general economy. Due to the management of this Commission and the hard work of our employees we have certainly done better than most and are in a position to make this contribution. I believe it is a testament to the work of the Administrative Committee and a testament to the work of the Commission itself that we are able to do this and do it out of the commitment to our employees. In a perfect world it is an easier decision than it was, but I feel that everyone agrees this was the right decision."

Commissioner Prevostnik addressed the meeting and requested that he be recorded as casting a negative vote on this item.

Chairman DeGerolamo invited questions on the Resolution. No questions were presented and the Resolution was adopted.

APPOINTMENT OF BOWMAN & COMPANY TO PERFORM A FINANCIAL AUDIT FOR THE 2010 FINANCIAL YEAR

R: 2159-12-10 – FIN-05-12-10

Chairman DeGerolamo addressed the meeting and asked the Commission Members if, after their review, there were any questions.

DELAWARE RIVER JOINT TOLL BRIDGE COMMISSION

Meeting of December 20, 2010

At the conclusion of the review Commissioner Heller moved and Commissioner Hart seconded the adoption of the following Resolution:

"RESOLVED, by the Delaware River Joint Toll Bridge Commission, at it's Regular Meeting assembled this 20th day of December 2010, that the Commission, via this Resolution, authorizes the Executive Director to engage Bowman & Co. LLP to perform a financial audit for the 2010 financial year."

Chairman DeGerolamo invited questions on the Resolution, but no questions were presented. The Resolution was unanimously adopted.

AWARD OF CONTRACT FOR CONSULTING SERVICES TO REVIEW THE COMMISSION'S TOLL REVENUE REPORTING PROCESSES TO CLIFTON GUNDERSON INC.

R: 2160-12-10 – ADM-06-12-10

Chairman DeGerolamo addressed the meeting and asked the Commission Members if, after their review, there were any questions.

At the conclusion of the review Commissioner Prevost moved and Commissioner Heller seconded the adoption of the following Resolution.

"RESOLVED, by the Delaware River Joint Toll Bridge Commission, at it's Regular Meeting assembled this 20th day of December 2010, that the Commission, via this Resolution, award Contract No. C-587A, Consultant Services to Review the Commission's Toll Revenue Reporting Processes to Clifton Gunderson LLP, Inc. of Philadelphia, Pennsylvania for an amount not-to-exceed \$40,000.00 and;

"RESOLVED, identify the General Reserve Fund as the source of funds required for payment of any invoices and be it;

"FURTHER RESOLVED: The Executive Director is hereby authorized to approve and execute all necessary contract on behalf of the DRJTBC."

Chairman DeGerolamo invited questions on the Resolution, but no questions were presented. The Resolution was unanimously adopted.

RENEWAL OF NEBCO RETIREE MEDICAL AND PRESCRIPTION INSURANCE 1/1/11-12/31/11

R: 2161-12-10 - INS-01-12-10

Chairman DeGerolamo addressed the meeting and asked the Commission Members if, after their review, there were any questions.

DELAWARE RIVER JOINT TOLL BRIDGE COMMISSION

Meeting of December 20, 2010

At the conclusion of the review Commissioner Prevoznik moved and Commissioner Broughal seconded the adoption of the following Resolution:

"RESOLVED, by the Delaware River Joint Toll Bridge Commission, at it's Regular Meeting assembled this 20th day of December 2010, that the Commission, via this Resolution, authorizes the Executive Director to effect the renewal of the medical and prescription insurance plans provided through NEBCO with the incumbent medical and prescription insurer (United American Insurance Company) for supplemental coverage to Medicare for eligible retirees and dependents who are sixty-five years and older. That coverage is to be provided at the current benefit levels on a fully-insured premium basis at monthly rates of \$210.00 and \$325.00, respectively, for the one year period January 1, 2011 through December 31, 2011."

Commissioner Heller addressed the meeting and requested that she be recorded as casting a negative vote on this item.

Chairman DeGerolamo invited questions on the Resolution, but no questions were presented. The Resolution was adopted.

APPOINTMENT OF AON, BROKER OF RECORD FOR BUSINESS-RELATED INSURANCE WITH A CONTRACT TERM OF 18 MONTHS

R: 2162-12-10 - INS-02-12-10

Chairman DeGerolamo addressed the meeting and asked the Commission Members if, after their review, there were any questions.

Commissioner Hart addressed the meeting and requested to be recorded as abstaining from this vote.

At the conclusion of the review Commissioner Broughal moved and Commissioner Prevoznik seconded the adoption of the following Resolution:

"RESOLVED, by the Delaware River Joint Toll Bridge Commission, at it's Regular Meeting assembled this 20th day of December 2010, that the Commission, via this Resolution, authorizes the appointment of AON as the Commission's Broker of Record for our business-related insurance coverages including our property, casualty and liability insurances for a period of eighteen months through July 1, 2012."

Commissioner Heller addressed the meeting and requested that she be recorded as casting a negative vote on this item.

Chairman DeGerolamo invited questions on the Resolution, but no questions were presented. The Resolution was adopted

DELAWARE RIVER JOINT TOLL BRIDGE COMMISSION

Meeting of December 20, 2010

APPROVAL FOR PAYMENT OF INVOICE WOLFF AND SAMSON

R: 2163-12-10 - ACCT-01-12-10

Chairman DeGerolamo addressed the meeting and asked the Commission Members if, after their review, there were any questions.

At the conclusion of the review Commissioner Hodas moved and Commissioner Laurenti seconded the adoption of the following Resolution:

"RESOLVED, by the Delaware River Joint Toll Bridge Commission, at it's Regular Meeting assembled this 20th day of December 2010, that the Commission, via this Resolution, authorizes payment of invoice number #248144 in the total amount due of \$1,755.90 for professional services rendered to Wolff and Samson, New Jersey Labor Counsel and;

"RESOLVED: identifying the Operating Fund as the source of funds required for any and all disbursements."

Chairman DeGerolamo invited questions on the Resolution, but no questions were presented. The Resolution was unanimously adopted.

APPROVAL FOR PAYMENT OF INVOICE STRADLEY RONAN, PA LABOR COUNSEL

R: 2164-12-10 – ACCT-02-12-10

Chairman DeGerolamo addressed the meeting and asked the Commission Members if, after their review, there were any questions.

At the conclusion of the review Commissioner Hodas moved and Commissioner Laurenti seconded the adoption of the following Resolution:

"RESOLVED, by the Delaware River Joint Toll Bridge Commission, at it's Regular Meeting assembled this 20th day of December 2010, that the Commission, via this Resolution, authorizes approval for payment of #10253301, #10253300 and #10253299 in the total amount of \$8,823.76 for Professional Services Rendered to Stradley Ronon, PA Labor Counsel.

"RESOLVED: identifying the Operating Fund as the source of funds required for any and all disbursements."

Chairman DeGerolamo invited questions on the Resolution, but no questions were presented. The Resolution was unanimously adopted.

DELAWARE RIVER JOINT TOLL BRIDGE COMMISSION

Meeting of December 20, 2010

APPROVAL FOR PAYMENT OF INVOICE FLORIO, PERUCCI, STEINHART AND FADER

R: 2165-12-10 – ACCT-03-12-10

Chairman DeGerolamo addressed the meeting and asked the Commission Members if, after their review, there were any questions.

At the conclusion of the review Commissioner Hodas moved and Commissioner Laurenti seconded the adoption of the following Resolution:

"RESOLVED, by the Delaware River Joint Toll Bridge Commission, at it's Regular Meeting assembled this 20th day of December 2010, that the Commission, via this Resolution, authorizes payment of invoices #47027 and #47028 in the total amount due of \$1,080.00 for Capital and Non-Capital Professional Services to Florio, Perrucci, Steinhardt and Fader, NJ Legal Counsel.

"RESOLVED: identifying the Operating Fund as the source of funds required for any and all disbursements."

Chairman DeGerolamo invited questions on the Resolution, but no questions were presented. The Resolution was unanimously adopted.

APPROVAL FOR PAYMENT OF INVOICE FOX ROTHSCHILD, PA LEGAL COUNSEL

R: 2166-12-10 – ACCT-04-12-10

Chairman DeGerolamo addressed the meeting and asked the Commission Members if, after their review, there were any questions.

At the conclusion of the review Commissioner Hodas moved and Commissioner Laurenti seconded the adoption of the following Resolution:

"RESOLVED, by the Delaware River Joint Toll Bridge Commission, at it's Regular Meeting assembled this 20th day of December 2010, that the Commission, via this Resolution, authorizes payment of invoice numbers #1270521, #1270531 and #1270538 in the total amount due of \$560.29 for Capital and Non-Capital Improvements, to Fox Rothschild, PA Legal Counsel.

"RESOLVED: identifying the Appropriate Funds as shown on the invoice distribution sheet as the sources required for any and all disbursements."

Chairman DeGerolamo invited questions on the Resolution, but no questions were presented. The Resolution was unanimously adopted.

DELAWARE RIVER JOINT TOLL BRIDGE COMMISSION

Meeting of December 20, 2010

APPROVAL FOR PAYMENT OF INVOICE CITRIN COOPERMAN & COMPANY, LLP

R: 2167-12-10 – ACCT-05-12-10

Chairman DeGerolamo addressed the meeting and asked the Commission Members if, after their review, there were any questions.

At the conclusion of the review Commissioner Hodas moved and Commissioner Laurenti seconded the adoption of the following Resolution:

"RESOLVED, by the Delaware River Joint Toll Bridge Commission, at it's Regular Meeting assembled this 20th day of December 2010, that the Commission, via this Resolution, authorizes payment of invoices dated September 20, 2010 and November 20, 2010 in the total amount of \$4,125.00 to Citrin Cooperman & Company, LLP.

"RESOLVED: identifying the General Reserve Fund as the source of funds required for any and all disbursements."

Chairman DeGerolamo invited questions on the Resolution, but no questions were presented. The Resolution was unanimously adopted.

APPROVAL FOR PAYMENT OF INVOICE BOWMAN & COMPANY

R: 2168-12-10 – ACCT-06-12-10

Chairman DeGerolamo addressed the meeting and asked the Commission Members if, after their review, there were any questions.

At the conclusion of the review Commissioner Hodas moved and Commissioner Laurenti seconded the adoption of the following Resolution:

"RESOLVED, by the Delaware River Joint Toll Bridge Commission, at it's Regular Meeting assembled this 20th day of December 2010, that the Commission, via this Resolution, authorizes payment of invoice number #47453 in the total amount due of \$8,046.43 for professional services rendered to Bowman & Company LLP.

RESOLVED: identifying the Operating Fund as the source of funds required for any and all disbursements."

Chairman DeGerolamo invited questions on the Resolution, but no questions were presented. The Resolution was unanimously adopted.

DELAWARE RIVER JOINT TOLL BRIDGE COMMISSION

Meeting of December 20, 2010

INVITE ANY COMMENTS FROM PUBLIC

Chairman DeGerolamo addressed the meeting and invited any comments from the Public.

SCHEDULING OF THE JANUARY 2011 MEETING

Chairman DeGerolamo addressed the Meeting and stated that the Commission's next meeting will be held January 31, 2011.

The Meeting will be called to Order at 10:30 a.m. in the Boardroom at the New Hope Headquarters and Administration Building, New Hope Pennsylvania 18938-9579, on Monday, January 31, 2011.

Executive Director McCartney assured the Commission Members that an "Official Notice of Meeting" would be forwarded to each and every Member of the Commission.

ADJOURNMENT

Chairman DeGerolamo invited a motion for Adjournment.

Commissioner Hart then moved that the Meeting be adjourned and Commissioner Laurenti seconded the motion. The voice vote was unanimously affirmative and the Meeting was adjourned at 11:20 a.m., Monday, December 20, 2010.

Prepared and submitted by:



WENDY VADOLA READING

Assistant Secretary Treasurer to the Commission

Approved by:



FRANK G McCARTNEY
Executive Director

DELAWARE RIVER JOINT TOLL BRIDGE COMMISSION

Meeting of December 20, 2010

**FINANCE, INSURANCE AND MANAGEMENT OPERATIONS
COMMITTEE REPORT**

DONALD HART (Chairman), (New Jersey)

HARRY ZIKAS, (New Jersey)

GAETAN ALFANO, (Pennsylvania)

JAMES BROUGHAL, (Pennsylvania)

The following pages reflect a report on those items assigned to the Finance, Insurance and Management Committee.

Each item is reported separately and page numbered accordingly hereunder.

DELAWARE RIVER JOINT TOLL BRIDGE COMMISSION

Meeting of December 20, 2010

SUBJECT	DESCRIPTION	PAGE NUMBER
Accounting	Status of Cash Balances at November 30, 2010	1
Accounting	Status of Bond Retirement at November 30, 2010	2
Accounting	Status of Investments at November 30, 2010	3-6
Accounting	Status of Toll Traffic and Revenue & Toll Supported Traffic Month of November 2010 Compared with Month of November 2009	7-20
Accounting	Statistical Summary of Expenditures on Toll Bridges and Toll Supported Bridges Accounts for the Period November 1, 2010 through November 30, 2010	21-33
Accounting	Statement of Revenue and Expenses: Eleven Months Period ending November 30, 2010	34

DELAWARE RIVER JOINT TOLL BRIDGE COMMISSION

Meeting of December 20, 2010

**There follows Cash Balances of the Commission at November 30, 2010 for the
information and review of the Members:**

COMMISSION CASH DEPOSITS

Wachovia Bank

Revenue Fund	6,261,455
Payroll Fund	52,938

TOTAL	\$	6,314,393
--------------	-----------	------------------

CASH DEPOSIT GUARANTEES

WACHOVIA BANK	WACHOVIA BANK	FULL BALANCE	WACHOVIA BANK
	PA ACT 72		

DELAWARE RIVER JOINT TOLL BRIDGE COMMISSION

Meeting of December 20, 2010

STATUS OF BRIDGE SYSTEM REVENUE BONDS at November 30, 2010

Maturity	SERIES 2003				SERIES 2005A				SERIES 2007A				SERIES 2007B				Total	
	Yield	Principal Amount	Maturities & Calls		Yield	Principal Amount	Maturities & Calls		Yield	Principal Amount	Maturities & Calls		Yield	Principal Amount	Maturities & Calls	Average Yield	Remaining Outstanding	
7/1/2003	1.25%	\$ 3,010,000	\$ 3,010,000			N/A				N/A				N/A			-	
7/1/2004	1.58%	4,330,000	4,330,000			N/A				N/A				N/A			-	
7/1/2005	1.84%	4,455,000	4,455,000	2.35%	\$ 330,000	\$ 330,000	\$ 330,000			N/A				N/A			-	
7/1/2006	2.23%	4,635,000	4,635,000	2.50%	895,000	895,000	895,000			N/A				N/A			-	
7/1/2007	2.65%	4,865,000	4,865,000	2.76%	930,000	930,000	930,000			N/A				N/A			-	
7/1/2008	3.09%	5,115,000	5,115,000	2.90%	965,000	965,000	965,000	3.53%	\$ 470,000	\$ 470,000	\$ 470,000	\$ 3,350,000	\$ 3,350,000				-	
7/1/2009	3.46%	5,370,000	5,370,000	3.06%	1,005,000	1,005,000	1,005,000	3.53%	1,615,000	1,615,000	1,615,000	3,350,000	3,350,000				-	
7/1/2010	3.76%	5,635,000	5,635,000	3.23%	1,045,000	1,045,000	1,045,000	3.53%	1,410,000	1,410,000	1,410,000	3,650,000	3,650,000				-	
7/1/2011	3.99%	5,930,000		3.39%	1,095,000			3.54%	1,545,000			3,850,000				3.96%	12,420,000	
7/1/2012	4.16%	6,245,000		3.53%	1,150,000			3.56%	1,670,000			3,950,000				4.05%	13,015,000	
7/1/2013	4.30%	6,580,000		3.66%	1,210,000			3.58%	1,660,000			4,200,000				4.13%	13,650,000	
7/1/2014	4.91%	6,915,000	3,920,000	3.76%	5,000,000			3.62%	1,450,000			4,350,000				4.14%	13,795,000	
7/1/2015	4.67%	7,270,000	4,125,000	3.85%	5,220,000			3.66%	1,920,000			4,450,000				4.12%	14,735,000	
7/1/2016	4.94%	7,665,000	4,345,000	3.96%	5,540,000			3.73%	1,760,000			4,800,000				4.23%	15,420,000	
7/1/2017	4.98%	8,060,000	4,570,000	4.02%	5,835,000			3.80%	2,000,000			4,950,000				4.26%	16,275,000	
7/1/2018	4.94%	8,490,000	4,815,000	4.04%	6,155,000			3.88%	2,010,000			5,250,000				4.27%	17,090,000	
7/1/2019	4.99%	5,060,000	5,060,000	4.09%	6,480,000			3.96%	2,135,000			5,450,000				4.12%	14,065,000	
7/1/2020	4.96%	5,330,000	5,330,000	4.13%	6,840,000			4.03%	2,275,000			5,650,000				4.15%	14,765,000	
7/1/2021	4.98%	5,610,000		4.14%	1,825,000			4.08%	2,260,000			5,950,000				4.47%	15,645,000	
7/1/2022	5.03%	5,890,000		4.19%	1,920,000			4.12%	2,400,000			6,250,000				4.50%	16,460,000	
7/1/2023	5.07%	6,185,000		4.23%	2,020,000			4.17%	2,490,000			6,550,000				4.52%	17,245,000	
7/1/2024	5.10%	6,495,000		4.35%	2,125,000			4.21%	2,640,000			6,800,000				4.55%	18,060,000	
7/1/2025	5.14%	6,815,000		4.35%	2,235,000			4.25%	2,710,000			7,150,000				4.58%	18,910,000	
7/1/2026	5.14%	7,160,000		4.67%	2,345,000			4.27%	2,855,000			7,450,000				4.62%	19,810,000	
7/1/2027	5.14%	7,520,000		4.67%	2,450,000			4.30%	2,925,000			7,800,000				4.62%	20,695,000	
7/1/2028	5.14%	7,895,000		4.67%	2,560,000			4.35%	3,050,000			8,200,000				4.63%	21,705,000	
7/1/2029		N/A		4.67%	2,675,000			4.35%	3,200,000			8,550,000				4.34%	14,425,000	
7/1/2030		N/A		4.67%	2,795,000			4.35%	3,375,000			8,900,000				4.34%	15,070,000	
7/1/2031		N/A			N/A			4.35%	3,475,000			9,350,000				4.26%	12,825,000	
7/1/2032		N/A			N/A			4.39%	3,595,000			9,800,000				4.27%	13,395,000	
7/1/2033		N/A			N/A			4.39%	14,000,000			N/A				4.39%	14,000,000	
7/1/2034		N/A			N/A			4.39%	14,700,000			N/A				4.39%	14,700,000	
7/1/2035		N/A			N/A			4.39%	15,435,000			N/A				4.39%	15,435,000	
7/1/2036		N/A			N/A			4.60%	16,205,000			N/A				4.60%	16,205,000	
7/1/2037		N/A			N/A			4.60%	16,935,000			N/A				4.60%	16,935,000	
		\$ 158,530,000	\$ 69,580,000		\$ 72,645,000	\$ 5,170,000			\$ 134,170,000	\$ 3,495,000		\$ 150,000,000	\$ 10,350,000				\$ 426,750,000	



Delaware River Joint TBC
Purchases Report
Sorted by Fund - Maturity Date
November 1, 2010 - November 30, 2010

DRJTBC

CUSIP	Investment #	Fund	Sec. Type	Issuer	Original Par Value	Purchase Date	Payment Periods	Principal Purchased	Accrued Interest at Purchase	Rate at Purchase	Maturity Date	YTM	Ending Book Value
General Reserve Fund													
912795W80	10132	01GRF	ATD	USTR	25,000,000.00	11/09/2010	11/26 - At Maturity	24,998,583.33		0.120	11/26/2010	0.122	0.00
				Subtotal	25,000,000.00			24,998,583.33	0.00				0.00
				Total Purchases	25,000,000.00			24,998,583.33	0.00				0.00



Delaware River Joint TBC
Investment Classification
Sorted by Fund - Maturity Date
November 30, 2010

DRJTBC

CUSIP	Investment #	Fund	Issuer	Investment Class	Par Value	YTM	Maturity Date	Market Price	Market Date	Market Value	Book Value	Reported Value
Debt Service Fund												
38145C752	10113	01DSF	Goldman Sachs Illa Fed Port	Amort	697,963.58	0.007		100.000	11/30/2010	697,963.58	697,963.58	697,963.58
				Subtotal	697,963.58	0.007				697,963.58	697,963.58	697,963.58
General Reserve Fund												
38145C752	10115	01GRF	Goldman Sachs Illa Fed Port	Amort	36,552,795.07	0.007		100.000	11/30/2010	36,552,795.07	36,552,795.07	36,552,795.07
PAINVEST	10050	01GRF	PA Invest	Amort	5,066,493.68	0.138		100.000	11/30/2010	5,066,493.68	5,066,493.68	5,066,493.68
313398AK9	10063	01GRF	Federal Home Loan Mtg Corp	Fair	7,000,000.00	0.376	01/10/2011	99.651	11/30/2010	6,997,122.22	6,997,122.22	6,975,577.78
313588BJ3	10117	01GRF	Federal National Mtg Assn	Fair	8,000,000.00	0.233	02/02/2011	99.894	11/30/2010	7,991,568.90	7,996,780.00	7,991,568.90
31398APG1	10027	01GRF	Federal National Mtg Assn	Fair	7,500,000.00	3.272	04/11/2011	100.938	11/30/2010	7,570,350.00	7,488,479.85	7,570,350.00
31398AWQ1	10028	01GRF	Federal National Mtg Assn	Fair	5,000,000.00	1.111	04/28/2011	100.515	11/30/2010	5,025,775.00	5,005,311.24	5,025,775.00
3133XTJ64	10029	01GRF	Federal Home Loan Bank	Fair	5,000,000.00	1.319	05/16/2011	100.547	11/30/2010	5,027,350.00	5,001,253.45	5,027,350.00
3133XWCQ0	10094	01GRF	Federal Home Loan Bank	Fair	10,000,000.00	0.547	06/17/2011	100.234	11/30/2010	10,023,450.00	10,006,633.08	10,023,450.00
313588HF5	10100	01GRF	Federal National Mtg Assn	Fair	4,000,000.00	0.437	06/23/2011	99.698	11/30/2010	3,987,937.78	3,990,253.33	3,987,937.78
313384JW0	10116	01GRF	Federal National Mtg Assn	Fair	4,000,000.00	0.243	08/01/2011	99.761	11/30/2010	3,990,453.32	3,993,520.00	3,990,453.32
9127952K6	10127	01GRF	U.S. Treasury	Fair	5,000,000.00	0.213	10/20/2011	99.768	11/30/2010	4,988,429.17	4,990,579.16	4,988,429.17
31398AB43	10062	01GRF	Federal National Mtg Assn	Fair	7,000,000.00	0.980	01/12/2012	100.422	11/30/2010	7,029,540.00	6,991,896.11	7,029,540.00
3133XWW47	10082	01GRF	Federal Home Loan Bank	Fair	7,000,000.00	1.006	03/09/2012	100.812	11/30/2010	7,056,875.00	7,010,450.50	7,056,875.00
3128X9D80	10093	01GRF	Federal Home Loan Mtg Corp	Fair	5,000,000.00	1.138	04/25/2012	100.845	11/30/2010	5,042,250.00	4,999,095.03	5,042,250.00
3133XWKU2	10099	01GRF	Federal Home Loan Bank	Fair	4,000,000.00	0.779	06/08/2012	101.312	11/30/2010	4,052,500.00	4,035,869.37	4,052,500.00
31398AYM8	10118	01GRF	Federal National Mtg Assn	Fair	4,000,000.00	0.675	08/10/2012	102.078	11/30/2010	4,083,120.00	4,072,073.97	4,083,120.00
3134G1GQ1	10121	01GRF	Federal Home Loan Mtg Corp	Fair	4,000,000.00	0.652	08/28/2012	100.738	11/30/2010	4,029,520.00	4,024,016.42	4,029,520.00
31398A4T6	10126	01GRF	Federal National Mtg Assn	Fair	5,000,000.00	0.453	10/30/2012	99.891	11/30/2010	4,994,550.00	5,004,393.68	4,994,550.00
3133XVNT4	10061	01GRF	Federal Home Loan Bank	Fair	10,000,000.00	1.777	12/14/2012	102.203	11/30/2010	10,220,300.00	9,994,516.38	10,220,300.00
3137EACJ6	10092	01GRF	Federal Home Loan Mtg Corp	Fair	8,000,000.00	1.744	04/15/2013	102.172	11/30/2010	8,173,760.00	7,977,799.18	8,173,760.00
31398AJ94	10096	01GRF	Federal National Mtg Assn	Fair	6,000,000.00	1.517	05/07/2013	102.562	11/30/2010	6,153,750.00	6,033,015.32	6,153,750.00
				Subtotal	157,119,288.75	0.784				158,036,345.70	157,230,337.04	158,036,345.70
Operating Fund												
38145C752	10108	01OF	Goldman Sachs Illa Fed Port	Amort	3,998,926.99	0.007		100.000	11/30/2010	3,998,926.99	3,998,926.99	3,998,926.99
				Subtotal	3,998,926.99	0.007				3,998,926.99	3,998,926.99	3,998,926.99

Portfolio DRJ
AP
IC (PRF_IC) 7.1.1
Report Ver. 7.3.2

Delaware River Joint TBC
Investment Classification
November 30, 2010

Page 2

CUSIP	Investment #	Fund	Issuer	Investment Class	Par Value	YTM	Maturity Date	Market Price	Market Date	Market Value	Book Value	Reported Value
Reserve Maintenance Fund												
38145C752	10106	01RMF	Goldman Sachs Ila Fed Port	Amort	101,268.01	0.007	10/30/2010	100.000	11/30/2010	101,268.01	101,268.01	101,268.01
313588HF5	10098	01RMF	Federal National Mtg Assn	Fair	2,000,000.00	0.437	06/23/2011	99.698	11/30/2010	1,993,968.89	1,995,126.66	1,993,968.89
				Subtotal	2,101,268.01	0.416				2,095,236.90	2,096,394.67	2,095,236.90
Construction Fund 2005A												
38145C752	10112	05CF05	Goldman Sachs Ila Fed Port	Amort	15,713,172.67	0.007	10/30/2010	100.000	11/30/2010	15,713,172.67	15,713,172.67	15,713,172.67
912795UK5	10071	05CF05	U.S. Treasury	Fair	3,000,000.00	0.256	12/16/2010	99.778	11/30/2010	2,993,363.13	2,999,684.38	2,993,363.13
				Subtotal	18,713,172.67	0.047				18,706,535.80	18,712,857.05	18,706,535.80
Debt Service Reserve 2005A												
38145C752	10110	05DSRF05	Goldman Sachs Ila Fed Port	Amort	13,195.02	0.007	10/30/2010	100.000	11/30/2010	13,195.02	13,195.02	13,195.02
313588HF5	10101	05DSRF05	Federal National Mtg Assn	Fair	2,962,000.00	0.437	06/23/2011	99.698	11/30/2010	2,953,067.93	2,954,782.59	2,953,067.93
				Subtotal	2,975,195.02	0.435				2,966,262.95	2,967,977.61	2,966,262.95
Construction Fund 2007												
38145C752	10114	06CF07	Goldman Sachs Ila Fed Port	Amort	10,523,063.94	0.007	10/30/2010	100.000	11/30/2010	10,523,063.94	10,523,063.94	10,523,063.94
912795W98	10104	06CF07	U.S. Treasury	Fair	7,000,000.00	0.172	12/02/2010	99.928	11/30/2010	6,994,975.56	6,999,966.94	6,994,975.56
313588A72	10076	06CF07	Federal National Mtg Assn	Fair	12,000,000.00	0.365	01/18/2011	99.687	11/30/2010	11,962,447.61	11,994,240.00	11,962,447.61
313588BG9	10079	06CF07	Federal National Mtg Assn	Fair	12,000,000.00	0.365	01/31/2011	99.692	11/30/2010	11,963,040.00	11,992,680.00	11,963,040.00
9127952B6	10122	06CF07	U.S. Treasury	Fair	5,500,000.00	0.185	02/17/2011	99.919	11/30/2010	5,494,786.02	5,497,429.79	5,494,786.02
912795V99	10090	06CF07	U.S. Treasury	Fair	10,000,000.00	0.433	03/10/2011	99.676	11/30/2010	9,967,653.67	9,988,276.75	9,967,653.67
313588DQ5	10088	06CF07	Federal National Mtg Assn	Fair	12,000,000.00	0.508	03/28/2011	99.620	11/30/2010	11,954,500.02	11,980,500.00	11,954,500.02
313396DX8	10130	06CF07	Federal Home Loan Mtg Corp	Fair	6,500,000.00	0.192	04/04/2011	99.911	11/30/2010	6,494,215.00	6,495,746.11	6,494,215.00
313384GH6	10097	06CF07	Federal Home Loan Bank	Fair	9,000,000.00	0.529	06/01/2011	99.626	11/30/2010	8,966,375.02	8,976,340.00	8,966,375.02
912795X22	10105	06CF07	U.S. Treasury	Fair	7,000,000.00	0.307	06/30/2011	99.761	11/30/2010	6,983,289.47	6,987,589.10	6,983,289.47
313588KD6	10124	06CF07	Federal National Mtg Assn	Fair	15,000,000.00	0.304	08/08/2011	99.754	11/30/2010	14,963,125.00	14,968,750.00	14,963,125.00
9127952K6	10131	06CF07	U.S. Treasury	Fair	15,000,000.00	0.213	10/20/2011	99.768	11/30/2010	14,965,287.51	14,971,737.51	14,965,287.51
				Subtotal	122,523,063.94	0.307				122,232,758.82	122,376,320.14	122,232,758.82
Collateral Reserve 2007B												
38145C752	10109	06COL07B	Goldman Sachs Ila Fed Port	Amort	49,643.74	0.007	10/30/2010	100.000	11/30/2010	49,643.74	49,643.74	49,643.74
9127952K6	10128	06COL07B	U.S. Treasury	Fair	5,250,000.00	0.213	10/20/2011	99.768	11/30/2010	5,237,850.63	5,240,108.13	5,237,850.63
				Subtotal	5,299,643.74	0.211				5,287,494.37	5,289,751.87	5,287,494.37
Debt Service Reserve 2003												
38145C752	10119	06DSR03	Goldman Sachs Ila Fed Port	Amort	70,509.34	0.007	10/30/2010	100.000	11/30/2010	70,509.34	70,509.34	70,509.34

Portfolio DRJ
AP
IC (PRF JC) 7.1.1
Report Ver. 7.3.2

Delaware River Joint TBC
Investment Classification
November 30, 2010

Page 3

CUSIP	Investment #	Fund	Issuer	Investment Class	Par Value	YTM	Maturity Date	Market Price	Market Date	Market Value	Book Value	Reported Value
Debt Service Reserve 2003												
912795UX7	10065	06DSR03	U.S. Treasury	Fair	5,000,000.00	0.279	01/13/2011	99.748	11/30/2010	4,987,409.73	4,988,357.64	4,987,409.73
3128X9D80	10091	06DSR03	Federal Home Loan Mtg Corp	Fair	7,000,000.00	1.195	04/25/2012	100.845	11/30/2010	7,059,150.00	6,993,154.63	7,059,150.00
				Subtotal	12,070,509.34	0.811				12,117,069.07	12,062,021.61	12,117,069.07
Debt Service Reserve Fund 07A												
38145C752	10111	06DSRF7A	Goldman Sachs Ila Fed Port	Amort	85,087.71	0.007		100.000	11/30/2010	85,087.71	85,087.71	85,087.71
313588DQ5	10084	06DSRF7A	Federal National Mtg Assn	Fair	5,750,000.00	0.508	03/28/2011	99.620	11/30/2010	5,728,197.93	5,740,656.25	5,728,197.93
9127952K6	10129	06DSRF7A	U.S. Treasury	Fair	5,900,000.00	0.213	10/20/2011	99.768	11/30/2010	5,886,346.42	5,888,883.41	5,886,346.42
				Subtotal	11,735,087.71	0.356				11,699,632.06	11,714,627.37	11,699,632.06
				Total	337,234,119.75	0.532				337,838,226.24	337,147,177.93	337,838,226.24

DELAWARE RIVER JOINT TOLL BRIDGE COMMISSION
Meeting of December 20, 2010
TOLL TRAFFIC AND REVENUE STATISTICS (November, 2010)

Summary: The Commission experienced an increase in both total toll revenue and total toll traffic for November 2010 in comparison to the November 2009 traffic and revenue statistics. Toll Revenue increased 5.00% for the month of November and is up 2.94% in a full year comparison. Toll Traffic increased 2.09% for November 2010 and 3.96% in a full YTD comparison with 2009.

Analysis of November 2010/November 2009 toll revenue data comparison:

- An overall toll revenue increase of 5.00 percent was recorded at the Commission's seven toll bridges for the month.
- Commercial-vehicle toll revenue reflected a 5.50 percent increase.
- Passenger-vehicle toll revenue generated a 3.69 percent increase.

Analysis of November 2010/November 2009 traffic data comparison:

- Total toll traffic increased by 64,665 vehicles, or 2.09 percent for the month.
- Commercial-vehicle traffic increased by 22,584 vehicles, or 6.10 percent.
- Passenger-vehicle toll traffic increased by 42,081 vehicles, or 1.54 percent
- Total recorded westbound traffic volume at the 11 vehicular toll supported bridges for November 2010 increased by 1727 vehicles, or 0.07 percent as compared to November 2009.

Traffic analysis for 2010 YTD:

- Average daily toll traffic for the Commission's seven toll bridges through eleven months of 2010 was 106,435 total vehicles as compared to 102,381 total vehicles for January through November 2009, an increase of 3.96 percent.
- Recorded westbound traffic at the 11 toll supported bridges for YTD 2010 is reflecting a 1.90 percent decrease as compared to the same eleven month period in 2009.

District 1

Total toll traffic at Trenton-Morrisville (TM) for November 2010 reflected a 10.68 percent increase as a result of increases of 56,029 cars and 4,584 trucks when compared to November 2009. It should be noted that roadway construction work preparation for the Trenton – Morrisville Toll Bridge Rehabilitation and One Auxiliary Northbound Lane (T-380B) began in November 2006, with full lane closures commencing in November 2007. This project was substantially completed in November 2009. Also, closure of the Calhoun Street Toll-Supported Bridge for rehabilitation, resulted in diversion of normally non-toll bridge traffic onto the Trenton-Morrisville Toll Bridge during the period of May 24, 2010 through November 24th, when the bridge reopened to traffic. At New Hope-Lambertville (NHL), a decrease of 2,172 cars and an increase of 530 trucks combined to generate an overall decrease in total toll traffic of 0.98 percent for November 2010 as compared to November 2009.

District II

The I-78 Toll Bridge experienced an overall increase of 5.14 percent in total toll traffic for the month of November 2010 compared to November 2009 as the result of combined increases of 28,954 cars and 14,835 trucks. It should be noted that the two new ORT lanes at I78 opened on May 13, 2010. At the Easton-Phillipsburg (EP) Toll Bridge, decreases of 34,664 passenger vehicles and 2,028 trucks combined to generate a 7.11 percent decrease in total toll traffic for November 2010.

District III

Portland-Columbia (PC) experienced a 17.48 percent increase in total toll traffic during November 2010 as a result of increases of 17,114 automobiles and 1,366 trucks compared to November 2009. It should be noted that construction of the *E-ZPass* ORT lane at DWG has resulted in the diversion of traffic to Portland-Columbia. At the Delaware Water Gap (DWG) Toll Bridge, the decrease of 23,587 passenger vehicles and the increase of 3,206 trucks generated an overall 2.59 percent decrease in total toll traffic for November 2010 as compared to November 2009. It should be noted that DWG's *E-ZPass* ORT lane opened on November 20, 2010. At Milford-Montague (MM), an increase of 407 passenger vehicles combined with an increase of 91 trucks to produce a 0.49 percent increase in total toll traffic for the month of November 2010.

E-ZPass Penetration Rates

The table below provides a comparison of the *E-ZPass* penetration rates for the Commission's seven (7) toll bridges for the months of November, 2010 and November, 2009, and the year-to-date periods ending November 30, 2010 and November 30, 2009.

		<i>E-ZPass</i> PENETRATION RATES					
		NOV. 2010	NOV. 2009	Change in Monthly Percentage	YTD 2010	YTD 2009	Change in YTD Percentage
All Toll Bridges	Cars	58.19	56.17	2.02	57.09	55.97	1.12
	Trucks	73.66	73.07	0.59	72.89	72.86	0.03
	Total	60.10	58.19	1.91	59.03	58.07	0.96
Trenton - Morrisville	Cars	56.79	55.94	0.85	55.04	55.50	-0.46
	Trucks	84.38	83.46	0.92	83.88	83.39	0.49
	Total	58.49	57.59	0.90	56.82	57.29	-0.47
New Hope - Lambertville	Cars	69.71	66.65	3.06	68.36	65.69	2.67
	Trucks	73.54	73.71	-0.17	73.25	72.97	0.28
	Total	69.92	67.01	2.91	68.64	66.10	2.54
I-78	Cars	59.05	56.69	2.36	57.64	55.99	1.65
	Trucks	73.94	73.46	0.48	72.71	72.88	-0.17
	Total	62.31	60.25	2.06	61.00	59.70	1.30
Easton - Phillipsburg	Cars	61.92	58.28	3.64	61.31	59.55	1.76
	Trucks	73.08	74.59	-1.51	73.23	75.18	-1.95
	Total	62.62	59.29	3.33	62.13	60.72	1.41
Portland - Columbia	Cars	53.18	52.57	0.61	52.44	52.03	0.41
	Trucks	75.39	75.76	-0.37	75.53	73.54	1.99
	Total	54.53	53.92	0.61	53.85	53.29	0.56
Delaware Water Gap	Cars	54.67	52.76	1.91	54.16	52.54	1.62
	Trucks	69.58	68.63	0.95	69.04	68.71	0.33
	Total	56.81	54.90	1.91	56.25	54.75	1.50
Milford - Montague	Cars	54.48	53.79	0.69	54.31	54.30	0.01
	Trucks	67.15	63.41	3.74	68.27	67.36	0.91
	Total	54.81	54.03	0.78	54.68	54.66	0.02

DELAWARE RIVER JOINT TOLL BRIDGE COMMISSION

ALL TOLL BRIDGES

COMPARATIVE STATEMENT OF TOLL TRAFFIC AND REVENUE

JANUARY 1, 2009				JANUARY 1, 2010				MONTH OF			
NOVEMBER 30, 2009				NOVEMBER 30, 2010				NOVEMBER 2010			
334 DAYS				334 DAYS				30 DAYS			
NUMBER OF VEHICLES	TOTAL REVENUE	NUMBER OF VEHICLES	TOTAL REVENUE	NUMBER OF VEHICLES	TOTAL REVENUE	VEHICLE CLASS	NUMBER OF VEHICLES	TOTAL REVENUE	NUMBER OF VEHICLES	TOTAL REVENUE	
29,932,665	22,507,301.55	31,171,018	23,506,452.74	2,767,391	2,085,858.75	Passenger	2,767,391	2,085,858.75	2,725,310	2,055,501.75	
-	(712,117.73)	-	(893,694.96)	-	(83,433.80)	Discounts *	-	(83,433.80)	-	(124,283.10)	
29,932,665	\$ 21,795,183.82	31,171,018	\$ 22,612,757.78	2,767,391	\$ 2,002,424.95	TOTAL PASSENGER	2,767,391	\$ 2,002,424.95	2,725,310	\$ 1,931,218.65	
722,992	3,584,911.75	750,107	3,723,412.00	67,190	333,704.50	2-Axle Trucks	67,190	333,704.50	61,897	307,278.00	
301,430	2,899,857.91	316,081	3,045,353.64	29,170	280,767.09	3-Axle Trucks	29,170	280,767.09	26,054	251,104.86	
255,402	3,245,060.65	268,457	3,414,338.20	23,603	299,414.70	4-Axle Trucks	23,603	299,414.70	19,927	253,220.50	
2,916,292	46,498,517.30	2,967,890	47,380,558.84	265,826	4,243,054.60	5-Axle Trucks	265,826	4,243,054.60	256,894	4,099,792.04	
64,568	1,221,478.82	72,334	1,370,452.20	6,756	128,169.60	6-Axle Trucks	6,756	128,169.60	5,434	103,000.95	
1,950	48,474.72	3,297	78,402.92	410	9,511.49	7-Axle Trucks	410	9,511.49	170	4,265.65	
41	2,306.60	40	2,126.04	6	297.20	Permits	6	297.20	1	60.00	
4,262,675	\$ 57,500,607.75	4,378,206	\$ 59,014,643.84	392,961	\$ 5,294,919.18	TOTAL TRUCKS	392,961	\$ 5,294,919.18	370,377	\$ 5,018,722.00	
34,195,340	\$ 79,295,791.57	35,549,224	\$ 81,627,401.62	3,160,352	\$ 7,297,344.13	TOTAL TOLL VEHICLES	3,160,352	\$ 7,297,344.13	3,095,687	\$ 6,949,940.65	
102,381	\$ 237,412.55	106,435	\$ 244,393.42	105,345	\$ 243,244.80	DAILY AVERAGE	105,345	\$ 243,244.80	103,190	\$ 231,664.69	
35,552,224				35,552,224				Rate Change			
3,000				3,000				Traffic (toll)			
								Autos			
								Trucks			
								Revenue			
								Autos			
								Trucks			
								EZPass Penetration			
								Cars			
								Trucks			
								Total			
								Rate Change			
								Autos			
								Trucks			
								Revenue			
								Autos			
								Trucks			
								EZPass Penetration			
								Cars			
								Trucks			
								Total			
								Rate Change			
								Autos			
								Trucks			
								Revenue			
								Autos			
								Trucks			
								EZPass Penetration			
								Cars			
								Trucks			
								Total			
								Rate Change			
								Autos			
								Trucks			
								Revenue			
								Autos			
								Trucks			
								EZPass Penetration			
								Cars			
								Trucks			
								Total			
								Rate Change			
								Autos			
								Trucks			
								Revenue			
								Autos			
								Trucks			
								EZPass Penetration			
								Cars			
								Trucks			
								Total			
								Rate Change			
								Autos			
								Trucks			
								Revenue			
								Autos			
								Trucks			
								EZPass Penetration			
								Cars			
								Trucks			
								Total			
								Rate Change			
								Autos			
								Trucks			
								Revenue			
								Autos			
								Trucks			
								EZPass Penetration			
								Cars			
								Trucks			
								Total			
								Rate Change			
								Autos			
								Trucks			
								Revenue			
								Autos			
								Trucks			
								EZPass Penetration			
								Cars			
								Trucks			
								Total			
								Rate Change			
								Autos			
								Trucks			
								Revenue			
								Autos			
								Trucks			
								EZPass Penetration			
								Cars			
								Trucks			
								Total			
								Rate Change			
								Autos			
								Trucks			
								Revenue			
								Autos			
								Trucks			
								EZPass Penetration			
								Cars			
								Trucks			
								Total			
								Rate Change			
								Autos			
								Trucks			
								Revenue			
								Autos			
								Trucks			
								EZPass Penetration			
								Cars			
								Trucks			
								Total			
								Rate Change			
								Autos			
								Trucks			
								Revenue			
								Autos			
								Trucks			
								EZPass Penetration			
								Cars			
								Trucks			
								Total			
								Rate Change			
								Autos			
								Trucks			
								Revenue			
								Autos			
								Trucks			
								EZPass Penetration			
								Cars			
								Trucks			
								Total			
								Rate Change			
								Autos			
								Trucks			
								Revenue			
								Autos			
								Trucks			
								EZPass Penetration			
								Cars			
								Trucks			
								Total			
								Rate Change			
								Autos			
								Trucks			
								Revenue			
								Autos			
								Trucks			
								EZPass Penetration			
								Cars			
								Trucks			
								Total			
								Rate Change			
								Autos			
								Trucks			
								Revenue			
								Autos			
								Trucks			
								EZPass Penetration			
								Cars			
								Trucks			
								Total			
								Rate Change			
								Autos			
								Trucks			
								Revenue			
								Autos			
								Trucks			
								EZPass Penetration			
								Cars			
								Trucks			
								Total			
								Rate Change			
								Autos			
								Trucks			
								Revenue			
								Autos			
								Trucks			
								EZPass Penetration			
								Cars			
								Trucks			
								Total			
								Rate Change			
								Autos			
								Trucks			
								Revenue			
								Autos			
								Trucks			
								EZPass Penetration			
								Cars			
								Trucks			
								Total			
								Rate Change			
								Autos			
								Trucks			
								Revenue			
								Autos			
								Trucks			
								EZPass Penetration			
								Cars			
								Trucks			
								Total			
								Rate Change			
								Autos			
								Trucks			
								Revenue			
								Autos			
								Trucks			
								EZPass Penetration			
								Cars			
								Trucks			
								Total			
								Rate Change			
								Autos			
								Trucks			
								Revenue			
								Autos			
								Trucks			
								EZPass Penetration			
								Cars			
								Trucks			
								Total			
								Rate Change			
								Autos			
								Trucks			
								Revenue			
								Autos			
								Trucks			
								EZPass Penetration			
								Cars			
								Trucks			
								Total			
								Rate Change			
								Autos			
								Trucks			
								Revenue			
								Autos			
								Trucks			
								EZPass Penetration			
								Cars			
								Trucks			
								Total			
								Rate Change			
								Autos			
								Trucks			
								Revenue			
								Autos			
								Trucks			
								EZPass Penetration			
								Cars			
								Trucks			
								Total			
								Rate Change			
								Autos			
								Trucks			
								Revenue			
								Autos			
								Trucks			
								EZPass Penetration			
								Cars			
								Trucks			
								Total			
								Rate Change			
								Autos			
								Trucks			
								Revenue			
								Autos			
								Trucks			
								EZPass Penetration			
								Cars			
								Trucks			
								Total			
								Rate Change			
								Autos			
								Trucks			
								Revenue			
								Autos			
								Trucks			
								EZPass Penetration			
								Cars			
								Trucks			
								Total			
								Rate Change			
								Autos			
								Trucks			
								Revenue			
								Autos			
								Trucks			
								EZPass Penetration			
								Cars			
								Trucks			
								Total			
								Rate Change			
								Autos			
								Trucks			
								Revenue			
								Autos			
								Trucks			
								EZPass Penetration			
								Cars			
								Trucks			
								Total			
								Rate Change			
								Autos			
								Trucks			
								Revenue			
								Autos			
								Trucks			
								EZPass Penetration			
								Cars			
								Trucks			
								Total			
								Rate Change			
								Autos			
								Trucks			
								Revenue			
								Autos			
								Trucks			
								EZPass Penetration			
								Cars			
								Trucks			
								Total			
								Rate Change			
								Autos			
								Trucks			
								Revenue			
								Autos			
								Trucks			
								EZPass Penetration			
								Cars			
								Trucks			
								Total			
								Rate Change			
								Autos			
								Trucks			
								Revenue			
								Autos			
								Trucks			
								EZPass Penetration			
								Cars			
								Trucks			
								Total			
								Rate Change			
								Autos			
								Trucks			
								Revenue			
								Autos			
								Trucks			
								EZPass Penetration			
								Cars			
								Trucks			
								Total			
								Rate Change			
								Autos			
								Trucks			
								Revenue			
								Autos			
								Trucks			
								EZPass Penetration			
								Cars			
								Trucks			
								Total			
								Rate Change			
								Autos			
				</							

Rate Change	
Traffic (toll)	
Autos	3.96%
Trucks	4.14%
Revenue	2.71%
Autos	2.94%
Trucks	3.75%
EZPass Penetration	2.63%
Cars	57.09%
Trucks	72.89%
Total	59.03%

Rate Change	
Traffic (toll)	
Autos	2.09%
Trucks	1.54%
Revenue	6.10%
Autos	5.00%
Trucks	3.69%
EZPass Penetration	5.50%
Cars	58.19%
Trucks	73.66%
Total	60.10%

* Discounts represents rebates for commuter discounts earned when a customer crosses the Commission's bridges 20 times in a 35 day period as well as discounts for employee's and commission vehicle's non-revenue crossings.

Notes: (1) Three major snow events in February 2010 caused significant decreases in toll traffic in all three Districts.

(2) Closure of the Calhoun Street Toll-Supported Bridge for rehabilitation, has resulted in diversion of normally non-toll bridge traffic onto the Trenton-Morrisville Toll Bridge during the period beginning May 24, 2010 through the current date.

(3) Significant construction at the Trenton-Morrisville Toll Bridge caused moderate diversion to the local toll-supported bridges prior to September 2009.

DELAWARE RIVER JOINT TOLL BRIDGE COMMISSION

TRENTON - MORRISVILLE TOLL BRIDGE

COMPARATIVE STATEMENT OF TOLL TRAFFIC AND REVENUE

JANUARY 1, 2009 NOVEMBER 30, 2009 334 DAYS			JANUARY 1, 2010 NOVEMBER 30, 2010 334 DAYS			NOVEMBER 2010			MONTH OF NOVEMBER 2010 30 DAYS			MONTH OF NOVEMBER 2009 30 DAYS		
NUMBER OF VEHICLES	TOTAL REVENUE	NUMBER OF VEHICLES	TOTAL REVENUE	VEHICLE CLASS	NUMBER OF VEHICLES	TOTAL REVENUE	NUMBER OF VEHICLES	TOTAL REVENUE	NUMBER OF VEHICLES	TOTAL REVENUE	NUMBER OF VEHICLES	TOTAL REVENUE		
5,757,231	4,313,411.10 (130,793.22)	6,791,455	5,104,250.05 (167,545.29)	Passenger	589,281	443,073.75 (15,022.80)	533,252	401,006.25 (23,105.87)						
5,757,231	4,182,617.88	6,791,455	4,936,704.76	Discounts *	-	-	-	-						
				TOTAL PASSENGER	589,281	428,050.95	533,252	377,900.38						
154,125	784,176.00	177,594	881,903.50	2-Axle Trucks	16,166	80,345.50	13,634	67,735.50						
60,741	586,564.55	67,503	653,377.00	3-Axle Trucks	5,644	54,646.82	5,366	52,015.86						
45,155	577,594.55	53,477	685,488.70	4-Axle Trucks	4,545	57,799.30	4,024	51,535.90						
132,657	2,118,800.78	147,925	2,367,745.97	5-Axle Trucks	12,347	197,489.47	11,056	176,794.22						
1,401	26,740.56	1,618	31,205.85	6-Axle Trucks	80	1,544.40	120	2,281.50						
23	566.48	28	644.17	7-Axle Trucks	4	97.50	2	45.50						
-	-	-	-	Permits	-	-	-	-						
394,102	4,074,442.92	448,145	4,620,365.19	TOTAL TRUCKS	38,786	391,922.99	34,202	350,408.48						
6,151,333	8,257,060.80	7,239,600	9,557,069.95	TOTAL TOLL VEHICLES	628,067	819,973.94	567,454	728,308.86						
18,417	24,721.74	21,675	28,613.98	DAILY AVERAGE	20,936	27,332.46	18,915	24,276.96						
Rate Change														
Traffic (toll)														
Autos														
Trucks														
Revenue														
Autos														
Trucks														
EZPass Penetration														
Cars														
Trucks														
Total														
Rate Change														
Traffic (toll)														
Autos														
Trucks														
Revenue														
Autos														
Trucks														
EZPass Penetration														
Cars														
Trucks														
Total														

* Discounts represents rebates for commuter discounts earned when a customer crosses the Commission's bridges 20 times in a 35 day period as well as discounts for employee's and commission vehicle's non-revenue crossings.

Notes: (1) Closure of the Calhoun Street Toll- Supported Bridge for rehabilitation, has resulted in diversion of normally non-toll bridge traffic onto the Trenton-Morrisville Toll Bridge during the period beginning May 24, 2010 through the current date.

(2) Significant construction at the Trenton-Morrisville Toll Bridge caused moderate diversion to the local toll-supported bridges prior to September 2009.

DELAWARE RIVER JOINT TOLL BRIDGE COMMISSION

NEW HOPE - LAMBERTVILLE TOLL BRIDGE

COMPARATIVE STATEMENT OF TOLL TRAFFIC AND REVENUE

NOVEMBER 2010										
JANUARY 1, 2009 NOVEMBER 30, 2009 334 DAYS			JANUARY 1, 2010 NOVEMBER 30, 2010 334 DAYS			MONTH OF NOVEMBER 2010 30 DAYS		MONTH OF NOVEMBER 2009 30 DAYS		
NUMBER OF VEHICLES	TOTAL REVENUE	NUMBER OF VEHICLES	TOTAL REVENUE	VEHICLE CLASS	NUMBER OF VEHICLES	TOTAL REVENUE	NUMBER OF VEHICLES	TOTAL REVENUE	NUMBER OF VEHICLES	TOTAL REVENUE
1,703,485	\$ 1,279,248.30 (56,708.87)	1,672,972	1,261,747.65 (66,160.52)	Passenger	156,587	118,058.25	158,759	119,655.75		
1,703,485	\$ 1,222,539.43	1,672,972	\$ 1,195,587.13	Discounts *	-	(5,785.80)		(8,593.08)		
				TOTAL PASSENGER	156,587	112,272.45	158,759	111,062.67		
52,759	261,964.75	51,300	255,106.00	2-Axle Trucks	4,513	22,451.50	4,291	21,342.00		
18,289	177,015.56	18,117	175,518.46	3-Axle Trucks	1,583	15,353.74	1,479	14,328.10		
5,133	65,434.85	6,742	85,714.20	4-Axle Trucks	730	9,263.80	416	5,288.40		
23,843	381,714.44	23,736	380,713.92	5-Axle Trucks	2,128	34,140.98	2,256	36,144.84		
511	9,872.90	539	10,436.40	6-Axle Trucks	76	1,470.30	51	992.55		
38	906.75	44	1,061.16	7-Axle Trucks	2	43.23	9	227.50		
-	-	-	-	Permits	-	-	-	-		
100,573	\$ 896,909.25	100,478	\$ 908,550.14	TOTAL TRUCKS	9,032	\$ 82,723.55	8,502	\$ 78,323.39		
1,804,058	\$ 2,119,448.68	1,773,450	\$ 2,104,137.27	TOTAL TOLL VEHICLES	165,619	\$ 194,996.00	167,261	\$ 189,386.06		
5,401	\$ 6,345.65	5,310	\$ 6,299.81	DAILY	5,521	\$ 6,499.87	5,575	\$ 6,312.87		
Rate Change					Rate Change					
Traffic (toll)					Traffic (toll)					
Autos -1.70%					Autos -0.98%					
Trucks -1.79%					Trucks -1.37%					
Revenue -0.09%					Revenue 6.23%					
Autos -0.72%					Autos 2.96%					
Trucks -2.20%					Trucks 1.09%					
EZPass Penetration 1.30%					EZPass Penetration 5.62%					
Cars 68.36%					Cars 69.71%					
Trucks 73.25%					Trucks 73.54%					
Total 68.64%					Total 69.92%					

* Discounts represents rebates for commuter discounts earned when a customer crosses the Commission's bridges 20 times in a 35 day period as well as discounts for employee's and commission vehicle's non-revenue crossings.

DELAWARE RIVER JOINT TOLL BRIDGE COMMISSION

I 78 TOLL BRIDGE

COMPARATIVE STATEMENT OF TOLL TRAFFIC AND REVENUE

JANUARY 1, 2009				JANUARY 1, 2010				MONTH OF				
NOVEMBER 30, 2009				NOVEMBER 30, 2010				NOVEMBER 2010				
334 DAYS				334 DAYS				30 DAYS				
NUMBER OF VEHICLES	TOTAL REVENUE	NUMBER OF VEHICLES	TOTAL REVENUE	VEHICLE CLASS	NUMBER OF VEHICLES	TOTAL REVENUE	NUMBER OF VEHICLES	TOTAL REVENUE	NUMBER OF VEHICLES	TOTAL REVENUE	NUMBER OF VEHICLES	TOTAL REVENUE
7,158,151	5,400,857.55	7,321,778	5,536,031.93	Passenger	699,628	528,446.25	670,674	507,277.50	670,674	479,103.06	670,674	507,277.50
-	(155,031.59)	-	(199,299.40)	Discounts *	-	(18,758.49)	-	(28,174.44)	-	-	-	(28,174.44)
7,158,151	\$ 5,245,825.96	7,321,778	\$ 5,336,732.53	TOTAL PASSENGER	699,628	\$ 509,687.76	670,674	\$ 479,103.06	670,674	\$	670,674	\$ 479,103.06
198,879	985,340.25	195,455	968,870.00	2-Axle Trucks	18,400	91,227.00	17,882	88,655.00	17,882	88,655.00	17,882	88,655.00
86,328	828,833.59	90,025	865,707.02	3-Axle Trucks	9,250	88,897.40	7,963	76,564.49	7,963	76,564.49	7,963	76,564.49
96,806	1,219,934.95	113,490	1,434,400.50	4-Axle Trucks	10,746	135,908.50	8,141	102,679.20	8,141	102,679.20	8,141	102,679.20
1,588,796	25,313,182.88	1,644,562	26,230,805.24	5-Axle Trucks	152,891	2,438,835.25	143,418	2,286,378.06	143,418	2,286,378.06	143,418	2,286,378.06
40,967	773,411.53	43,363	818,879.10	6-Axle Trucks	4,239	80,166.45	3,529	66,691.95	3,529	66,691.95	3,529	66,691.95
1,105	26,700.67	2,395	55,552.09	7-Axle Trucks	343	7,812.99	101	2,509.67	101	2,509.67	101	2,509.67
10	575.08	6	310.60	Permits	-	-	-	-	-	-	-	-
2,012,891	\$ 29,147,978.95	2,089,296	\$ 30,374,524.55	TOTAL TRUCKS	195,869	\$ 2,842,847.59	181,034	\$ 2,623,478.37	181,034	\$	181,034	\$ 2,623,478.37
9,171,042	\$ 34,393,804.91	9,411,074	\$ 35,711,257.08	TOTAL TOLL VEHICLES	895,497	\$ 3,352,535.35	851,708	\$ 3,102,581.43	851,708	\$	851,708	\$ 3,102,581.43
27,458	\$ 102,975.46	28,177	\$ 106,919.93	DAILY AVERAGE	29,850	\$ 111,751.18	28,390	\$ 103,419.38	28,390	\$	28,390	\$ 103,419.38
Rate Change												
Traffic (toll)												
Autos												
Trucks												
Revenue												
Autos												
Trucks												
EZPass Penetration												
Cars												
Trucks												
Total												
Rate Change												
Traffic (toll)												
Autos												
Trucks												
Revenue												
Autos												
Trucks												
EZPass Penetration												
Cars												
Trucks												
Total												

Rate Change	
Traffic (toll)	2.62%
Autos	2.29%
Trucks	3.80%
Revenue	3.83%
Autos	1.73%
Trucks	4.21%
EZPass Penetration	
Cars	57.64%
Trucks	72.71%
Total	61.00%

Rate Change	
Traffic (toll)	5.14%
Autos	4.32%
Trucks	8.19%
Revenue	8.06%
Autos	6.38%
Trucks	8.36%
EZPass Penetration	
Cars	59.05%
Trucks	73.94%
Total	62.31%

* Discounts represents rebates for commuter discounts earned when a customer crosses the Commission's bridges 20 times in a 35 day period as well as discounts for employee's and commission vehicle's non-revenue crossings.

DELAWARE RIVER JOINT TOLL BRIDGE COMMISSION

EASTON - PHILLIPSBURG TOLL BRIDGE

COMPARATIVE STATEMENT OF TOLL TRAFFIC AND REVENUE

NOVEMBER 2010										
JANUARY 1, 2009 NOVEMBER 30, 2009 334 DAYS			JANUARY 1, 2010 NOVEMBER 30, 2010 334 DAYS			MONTH OF NOVEMBER 2010 30 DAYS			MONTH OF NOVEMBER 2009 30 DAYS	
NUMBER OF VEHICLES	TOTAL REVENUE	NUMBER OF VEHICLES	TOTAL REVENUE	VEHICLE CLASS	NUMBER OF VEHICLES	TOTAL REVENUE	NUMBER OF VEHICLES	TOTAL REVENUE	NUMBER OF VEHICLES	TOTAL REVENUE
5,259,468	3,943,547.25 (132,446.04)	5,339,245	4,017,523.60 (167,486.63)	Passenger	449,748	338,374.50	484,412	364,483.50 (23,884.79)		
5,259,468 \$	3,811,101.21	5,339,245 \$	3,850,036.97	Discounts *	-	(16,855.32)	-			
				TOTAL PASSENGER	449,748 \$	321,519.18	484,412 \$	340,598.71		
134,630	666,642.50	138,097	686,860.50	2-Axle Trucks	11,612	57,777.50	11,080	55,114.00		
44,929	432,331.42	43,812	421,954.22	3-Axle Trucks	3,589	34,537.82	3,411	32,910.96		
52,442	673,167.30	34,902	447,587.40	4-Axle Trucks	2,302	29,389.10	2,633	33,836.40		
193,036	3,080,260.59	173,589	2,782,383.51	5-Axle Trucks	12,258	195,941.16	14,574	232,962.18		
2,215	42,323.18	2,295	44,296.20	6-Axle Trucks	100	1,914.90	184	3,527.55		
59	1,451.14	41	923.48	7-Axle Trucks	2	52.00	9	208.98		
-		-		Permits	-	-	-	-		
427,311 \$	4,898,176.13	392,736 \$	4,384,005.31	TOTAL TRUCKS	29,863 \$	319,612.48	31,891 \$	358,560.07		
5,686,779 \$	8,709,277.34	5,731,981 \$	8,234,042.28	TOTAL TOLL VEHICLES	479,611 \$	641,131.66	516,303 \$	699,158.78		
17,026 \$	26,075.68	17,162 \$	24,652.82	DAILY AVERAGE	15,987 \$	21,371.06	17,210 \$	23,305.29		

Rate Change

Traffic (toll)

Autos 0.79%

Trucks 1.52%

Revenue -8.09%

Autos -5.46%

Trucks 1.02%

-10.50%

EZPass Penetration

Cars 61.31%

Trucks 73.23%

Total 62.13%

Rate Change

Traffic (toll)

Autos -7.11%

Trucks -7.16%

Revenue -6.36%

Autos -8.30%

Trucks -5.60%

-10.86%

EZPass Penetration

Cars 61.92%

Trucks 73.08%

Total 62.62%

* Discounts represents rebates for commuter discounts earned when a customer crosses the Commission's bridges 20 times in a 35 day period as well as discounts for employee's and commission vehicle's non-revenue crossings.

DELAWARE RIVER JOINT TOLL BRIDGE COMMISSION

PORTLAND - COLUMBIA TOLL BRIDGE

COMPARATIVE STATEMENT OF TOLL TRAFFIC AND REVENUE

JANUARY 1, 2009				JANUARY 1, 2010				MONTH OF				MONTH OF			
NOVEMBER 30, 2009				NOVEMBER 30, 2010				NOVEMBER 2010				NOVEMBER 2009			
334 DAYS				334 DAYS				30 DAYS				30 DAYS			
NUMBER OF VEHICLES	TOTAL REVENUE	NUMBER OF VEHICLES	TOTAL REVENUE	NUMBER OF VEHICLES	TOTAL REVENUE	VEHICLE CLASS	NUMBER OF VEHICLES	TOTAL REVENUE	NUMBER OF VEHICLES	TOTAL REVENUE	NUMBER OF VEHICLES	TOTAL REVENUE	NUMBER OF VEHICLES	TOTAL REVENUE	
1,145,360	862,699.00	1,218,831	921,113.25	116,688	88,065.00	Passenger	99,574	75,187.50	99,574	75,187.50					
	(41,005.53)	-	(47,039.53)	-	(4,007.43)	Discounts *	-	(5,778.82)	-	(5,778.82)					
1,145,360 \$	821,693.37	1,218,831 \$	874,073.72	116,688 \$	84,057.57	TOTAL PASSENGER	116,688	84,057.57	99,574 \$	69,408.68					
26,457	131,378.50	27,476	136,466.50	2,444	12,179.00	2-Axle Trucks	2,139	10,637.50	2,139	10,637.50					
8,550	83,035.75	10,410	101,201.65	919	8,935.03	3-Axle Trucks	919	7,155.63	736	7,155.63					
8,733	112,892.00	11,124	144,138.80	973	12,613.90	4-Axle Trucks	973	10,927.80	844	10,927.80					
27,136	437,090.17	29,519	475,837.87	3,126	50,467.02	5-Axle Trucks	3,126	38,931.09	2,415	38,931.09					
242	4,704.39	256	4,982.25	53	1,033.50	6-Axle Trucks	53	312.00	16	312.00					
45	1,055.11	8	191.75	1	22.75	7-Axle Trucks	1	-	-	-					
-	-	1	22.00	-	-	Permits	-	-	-	-					
71,163 \$	770,155.92	78,794 \$	862,940.82	7,516 \$	85,251.20	TOTAL TRUCKS	7,516	85,251.20	6,150 \$	67,964.02					
1,216,523 \$	1,591,839.29	1,297,625 \$	1,736,914.54	124,204 \$	169,308.77	TOTAL TOLL VEHICLES	124,204	169,308.77	105,724 \$	137,372.70					
3,642 \$	4,765.99	3,885 \$	5,200.34	4,140 \$	5,643.63	DAILY AVERAGE	4,140	5,643.63	3,524 \$	4,579.09					

Rate Change	
Traffic (toll)	17.48%
Autos	17.19%
Trucks	22.21%
Revenue	23.25%
Autos	21.11%
Trucks	25.44%
EZPass Penetration	
Cars	53.18%
Trucks	75.39%
Total	54.53%

Rate Change	
Traffic (toll)	17.48%
Autos	17.19%
Trucks	22.21%
Revenue	23.25%
Autos	21.11%
Trucks	25.44%
EZPass Penetration	
Cars	53.18%
Trucks	75.39%
Total	54.53%

* Discounts represents rebates for commuter discounts earned when a customer crosses the Commission's bridges 20 times in a 35 day period as well as discounts for employee's and commission vehicle's non-revenue crossings.

DELAWARE RIVER JOINT TOLL BRIDGE COMMISSION

DELAWARE WATER GAP TOLL BRIDGE

COMPARATIVE STATEMENT OF TOLL TRAFFIC AND REVENUE

JANUARY 1, 2009				JANUARY 1, 2010				MONTH OF				MONTH OF			
NOVEMBER 30, 2009				NOVEMBER 30, 2010				NOVEMBER 2010				NOVEMBER 2009			
334 DAYS				334 DAYS				30 DAYS				30 DAYS			
NUMBER OF VEHICLES	TOTAL REVENUE	NUMBER OF VEHICLES	TOTAL REVENUE	NUMBER OF VEHICLES	TOTAL REVENUE	VEHICLE CLASS	NUMBER OF VEHICLES	TOTAL REVENUE	NUMBER OF VEHICLES	TOTAL REVENUE	NUMBER OF VEHICLES	TOTAL REVENUE	NUMBER OF VEHICLES	TOTAL REVENUE	TOTAL REVENUE
7,744,767	5,829,504.00 (164,138.96)	7,648,186	5,773,989.76 (206,536.13)	7,648,186	5,567,453.63	Passenger Discounts *	656,553	495,011.25 (18,924.56)	680,140	513,459.00 (29,812.08)	680,140	483,646.92	680,140	513,459.00 (29,812.08)	513,459.00 (29,812.08)
7,744,767	5,665,365.04	7,648,186	5,567,453.63	7,648,186	5,567,453.63	TOTAL PASSENGER	656,553	476,086.69	680,140	483,646.92	680,140	483,646.92	680,140	483,646.92	483,646.92
135,364	670,069.25	139,652	691,945.00	139,652	691,945.00	2-Axle Trucks	12,374	61,341.50	11,305	55,991.00	11,305	55,991.00	11,305	55,991.00	55,991.00
79,085	758,010.49	83,119	797,573.27	83,119	797,573.27	3-Axle Trucks	7,971	76,319.48	6,880	66,003.30	6,880	66,003.30	6,880	66,003.30	66,003.30
45,746	578,136.65	47,265	598,157.30	47,265	598,157.30	4-Axle Trucks	4,201	53,064.70	3,764	47,600.80	3,764	47,600.80	3,764	47,600.80	47,600.80
943,828	15,055,289.56	942,224	15,041,758.30	942,224	15,041,758.30	5-Axle Trucks	82,484	1,316,683.84	82,563	1,318,771.11	82,563	1,318,771.11	82,563	1,318,771.11	1,318,771.11
19,144	362,725.86	24,182	459,090.45	24,182	459,090.45	6-Axle Trucks	2,201	41,903.55	1,528	29,078.40	1,528	29,078.40	1,528	29,078.40	29,078.40
672	17,617.11	774	19,875.56	774	19,875.56	7-Axle Trucks	58	1,483.02	48	1,251.25	48	1,251.25	48	1,251.25	1,251.25
31	1,731.52	33	1,793.44	33	1,793.44	Permits	6	297.20	1	60.00	1	60.00	1	60.00	60.00
1,223,870	17,443,580.44	1,237,249	17,610,193.32	1,237,249	17,610,193.32	TOTAL TRUCKS	109,295	1,551,093.29	106,089	1,518,755.86	106,089	1,518,755.86	106,089	1,518,755.86	1,518,755.86
8,968,637	23,108,945.48	8,885,435	23,177,646.95	8,885,435	23,177,646.95	TOTAL TOLL VEHICLES	765,848	2,027,179.98	786,229	2,002,402.78	786,229	2,002,402.78	786,229	2,002,402.78	2,002,402.78
26,852	69,188.46	26,603	69,394.15	26,603	69,394.15	DAILY AVERAGE	25,528	67,572.67	26,208	66,746.76	26,208	66,746.76	26,208	66,746.76	66,746.76

Rate Change	
Traffic (toll)	-0.93%
Autos	-1.25%
Trucks	1.09%
Revenue	0.30%
Autos	-1.73%
Trucks	0.96%
EZPass Penetration	
Cars	54.16%
Trucks	69.04%
Total	56.25%

Rate Change	
Traffic (toll)	-2.59%
Autos	-3.47%
Trucks	3.02%
Revenue	1.24%
Autos	-1.56%
Trucks	2.13%
EZPass Penetration	
Cars	54.67%
Trucks	69.58%
Total	56.81%

* Discounts represents rebates for commuter discounts earned when a customer crosses the Commission's bridges 20 times in a 35 day period as well as discounts for employee's and commission vehicle's non-revenue crossings.

DELAWARE RIVER JOINT TOLL BRIDGE COMMISSION

MILFORD - MONTAGUE TOLL BRIDGE

COMPARATIVE STATEMENT OF TOLL TRAFFIC AND REVENUE

NOVEMBER 2010											
JANUARY 1, 2009 NOVEMBER 30, 2009 334 DAYS			JANUARY 1, 2010 NOVEMBER 30, 2010 334 DAYS			MONTH OF NOVEMBER 2010 30 DAYS			MONTH OF NOVEMBER 2009 30 DAYS		
NUMBER OF VEHICLES	TOTAL REVENUE		NUMBER OF VEHICLES	TOTAL REVENUE	VEHICLE CLASS	NUMBER OF VEHICLES	TOTAL REVENUE		NUMBER OF VEHICLES	TOTAL REVENUE	
1,164,203	878,044.35		1,178,551	891,796.50	Passenger	98,906	74,829.75		98,499	74,432.25	
-	(31,993.42)		-	(39,627.46)	Discounts *	-	(4,079.40)		-	(4,934.02)	
1,164,203	846,050.93		1,178,551	852,169.04	TOTAL PASSENGER	98,906	70,750.35		98,499	69,498.23	
20,778	103,340.50		20,533	102,260.50	2-Axle Trucks	1,681	8,382.50		1,566	7,803.00	
3,508	34,066.55		3,095	30,022.02	3-Axle Trucks	214	2,076.80		219	2,126.52	
1,387	17,900.35		1,457	18,851.30	4-Axle Trucks	106	1,375.40		105	1,352.00	
6,996	112,178.88		6,335	101,314.03	5-Axle Trucks	592	9,496.88		612	9,810.54	
88	1,700.40		81	1,561.95	6-Axle Trucks	7	136.50		6	117.00	
8	177.46		7	154.71	7-Axle Trucks	-	-		1	22.75	
-	-		-	-	Permits	-	-		-	-	
32,765	269,364.14		31,508	254,164.51	TOTAL TRUCKS	2,600	21,468.08		2,509	21,231.81	
1,196,968	1,115,415.07		1,210,059	1,106,333.55	TOTAL TOLL VEHICLES	101,506	92,218.43		101,008	90,730.04	
3,584	3,339.57		3,623	3,312.38	DAILY AVERAGE	3,384	3,073.95		3,367	3,024.33	
Rate Change			Rate Change			Rate Change			Rate Change		
Traffic (toll)			Traffic (toll)			Traffic (toll)			Traffic (toll)		
Autos			Autos			Autos			Autos		
Trucks			Trucks			Trucks			Trucks		
Revenue			Revenue			Revenue			Revenue		
Autos			Autos			Autos			Autos		
Trucks			Trucks			Trucks			Trucks		
EZPass Penetration			EZPass Penetration			EZPass Penetration			EZPass Penetration		
Cars			Cars			Cars			Cars		
Trucks			Trucks			Trucks			Trucks		
Total			Total			Total			Total		

Rate Change	
Traffic (toll)	
Autos	1.09%
Trucks	1.23%
Revenue	-3.84%
Autos	-0.81%
Trucks	0.72%
EZPass Penetration	-5.64%
Cars	54.31%
Trucks	63.27%
Total	54.68%

Rate Change	
Traffic (toll)	
Autos	0.49%
Trucks	0.41%
Revenue	3.63%
Autos	1.64%
Trucks	1.80%
EZPass Penetration	1.11%
Cars	54.48%
Trucks	67.15%
Total	54.81%

* Discounts represents rebates for commuter discounts earned when a customer crosses the Commission's bridges 20 times in a 35 day period as well as discounts for employee's and commission vehicle's non-revenue crossings.

Delaware River Joint Toll Bridge Commission
Toll Supported Bridge - Westbound Traffic Counts
November 2010

Bridge	Westbound Volume					
	November 2010	November 2009	% Change	YTD 2010	YTD 2009	% Change
Lower Trenton	376,973	380,100	-0.82%	4,834,787	4,397,263	9.95%
Calhoun Street	234,264	273,138	-14.23%	1,750,634	3,046,896	-42.54%
Scudder Falls	918,078	898,162	2.22%	10,204,141	9,920,299	2.86%
Washington Crossing ¹	114,576	113,971	0.53%	1,101,964	1,353,459	-18.58%
New Hope - Lambertville	196,722	193,673	1.57%	2,263,049	2,115,014	7.00%
Centre Bridge - Stockton	82,922	59,616	39.09%	770,199	710,125	8.46%
Uhlerstown - Frenchtown	59,938	58,540	2.39%	701,136	668,137	4.94%
Upper Black Eddy - Milford	60,225	52,043	15.72%	633,177	584,592	8.31%
Riegelsville ²	28,643	60,421	-52.59%	628,068	616,726	1.84%
Northampton Street	378,706	348,663	8.62%	4,267,145	4,276,244	-0.21%
Riverton - Belvidere ³	64,161	75,155	-14.63%	873,425	882,305	-1.01%
Total	2,515,208	2,513,481	0.07%	28,027,724	28,571,060	-1.90%

Notes:

- (1) Counters down 11-1-10 to 11-30-10. July 2010 data interpolated decreased by 5%.
- (2) Bridge closed on weekends due to construction under Contract No. TS-445A.
- (3) Counters down 11-2-10 to 11-19-10. Data interpolated.

Delaware River Joint Toll Bridge Commission **Toll Supported Bridge - Two Way Traffic Counts**

November 2010

Bridge	Total Volume					
	November 2010	November 2009	% Change	YTD 2010	YTD 2009	% Change
Lower Trenton	500,631	513,799	-2.56%	6,831,262	6,107,698	11.85%
Calhoun Street	454,447	537,297	-15.42%	3,430,330	6,143,301	-44.16%
Scudder Falls	1,757,295	1,724,337	1.91%	19,550,544	19,128,795	2.20%
Washington Crossing ¹	203,246	198,432	2.43%	1,926,876	2,324,463	-17.10%
New Hope - Lambertville	419,620	411,658	1.93%	4,803,680	4,497,497	6.81%
Centre Bridge - Stockton	141,121	128,515	9.81%	1,616,032	1,541,592	4.83%
Uhlerstown - Frenchtown	119,611	116,369	2.79%	1,394,593	1,327,242	5.07%
Upper Black Eddy - Milford	120,105	108,037	11.17%	1,241,833	1,222,559	1.58%
Riegelsville ²	53,808	101,092	-46.77%	1,044,545	1,079,223	-3.21%
Northampton Street	609,965	585,296	4.21%	7,008,699	7,146,590	-1.93%
Riverton - Belvidere ³	125,704	139,078	-9.62%	1,622,070	1,625,941	-0.24%
Total	4,505,552	4,563,910	-1.28%	50,470,463	52,144,902	-3.21%

Notes:

(1) Counters down 11-1-10 to 11-30-10. July 2010 data interpolated decreased by 5%.

(2) Bridge closed on weekends due to construction under Contract No. TS-445A.

(3) Counters down 11-2-10 to 11-19-10. Data interpolated.

Delaware River Joint Toll Bridge Commission **Toll Bridge - Two Way Traffic Counts**

November 2010

Bridge	Total Volume (all classes)					
	November 2010	November 2009	% Change	YTD 2010	YTD 2009	% Change
Trenton - Morrisville	1,578,772	1,442,622	9.44%	18,251,229	17,023,238	7.21%
New Hope - Lambertville	323,389	364,086	-11.18%	3,504,043	3,948,726	-11.26%
Interstate 78	1,837,068	1,756,031	4.61%	19,670,320	18,982,204	3.63%
Easton - Phillipsburg ¹	1,111,197	1,151,665	-3.51%	12,762,874	12,811,991	-0.38%
Portland - Columbia	239,269	215,194	11.19%	2,623,645	2,478,316	5.86%
Delaware Water Gap ²	1,554,494	1,567,749	-0.85%	18,653,547	18,109,130	3.01%
Milford - Montague ³	183,351	188,009	-2.48%	2,199,255	2,653,346	-17.11%
Total	6,827,539	6,685,356	2.13%	77,664,913	76,006,952	2.18%

Notes:

- (1) Counter down 11-15-10 to 1-28-10. Data interpolated.
- (2) Counter down 11-1-10 to 11-30-10. November 2009 data interpolated and reduced by 2%.
- (3) Counter down 11-19-10 to 11-30-10. Data interpolated.

DELAWARE RIVER JOINT TOLL BRIDGE COMMISSION

Meeting of December 20, 2010

STATISTICAL SUMMARY OF EXPENDITURES

This includes reports entitled **"Budget vs Actual"** covering the month of November 2010 and the eleven month year-to-date operations of fiscal year 2010 relative to Toll Bridges, Toll Supported Bridges and Administration departments.

Total expense plus encumbrance totaled \$3,368,960 for the month of November. For the 2010 fiscal year-to-date period, total expense plus encumbrances amounted to \$39,930,549 or 95.0% of the year-to-date operating budget. Most of the expense line items are well within their year-to-date operating budget.

There are several line items that are currently running ahead of budget on a year-to-date basis. Health Care Benefit cost is 4.8% or \$265,000 due to higher than budgeted rates for the premium based healthcare plan. EZPass Operating expense is slightly ahead of budget due to higher credit card charges resulting from higher toll revenues collected. All other expense line items are within their budgets

There were two unusual credits to expense during the month of November. Professional Service Fees were reduced \$54,700 due to a reimbursement from the OPEB Trust for previously expensed legal fees and Communications Expense was reduced \$97,400 due to the reversal of an over accrual during the year.

Delaware River Joint Toll Bridge Commission
Budget vs Actual
For the Eleven Months Ending November 30, 2010

TOTAL COMMISSION

	Budget 2010	Expended For The Month	Expended Year To Date	Encumbered	Budget Remaining Balance
Regular Employees Salaries	\$17,959,963	\$1,381,205	\$15,856,138	\$0	\$2,103,824
Temporary/Summer Salaries	661,502	28,480	540,435	0	121,067
Overtime Wages	306,005	10,145	249,836	0	56,169
Pension Contributions	942,607	62,131	622,511	0	320,096
Social Security Contributions	1,510,495	106,550	1,306,038	0	204,457
Health Care Benefits	6,044,085	536,547	5,803,571	0	240,515
Life Insurance	120,998	10,155	109,362	0	11,636
Unemployment Compensation	45,000	1,839	23,222	0	21,778
Utility Expense	904,246	33,909	639,622	33,750	230,874
Office Expense	267,310	15,396	190,705	13,077	63,528
Communication	577,585	(56,995)	342,195	9,082	226,308
Information Technology	269,150	23,843	206,180	34,685	28,284
Education Training	154,761	3,773	105,084	150	49,527
Vehicle Maint. & Equipment	377,964	28,342	243,688	31,696	102,580
Operations Maintenance	2,361,509	126,591	1,552,206	207,088	602,215
Commission	22,500	1,823	20,352	730	1,418
Toll Collection	66,700	3,695	45,419	7,026	14,255
Uniform Expense	78,750	5,990	66,386	11,372	993
Business Insurance	3,667,830	237,900	2,770,608	0	897,221
Licenses & Inspections	3,595	570	2,977	0	618
Advertising	60,700	3,239	24,389	3,032	33,279
Professional Services	1,015,254	(27,590)	806,357	75,415	133,483
State Police Bridge Security	4,213,084	344,419	3,698,148	0	514,936
EZPass Equipment/Maintenance	1,365,566	106,718	1,154,097	72,000	139,469
General Contingency	300,000	0	15,825	0	284,175
EZPass Operating Expense	3,167,486	410,922	3,036,095	0	131,391
Total	\$46,464,646	\$3,399,595	\$39,431,447	\$499,102	\$6,534,097

Delaware River Joint Toll Bridge Commission
Budget vs Actual
For the Eleven Months Ending November 30, 2010

ADMINISTRATION*

	Budget 2010	Expended For The Month	Expended Year To Date	Encumbered	Budget Remaining Balance
Regular Employees Salaries	\$3,046,578	\$227,049	\$2,686,401	\$0	\$360,177
Temporary/Summer Salaries	8,196	0	10,929	0	(2,733)
Overtime Wages	1,200	0	154	0	1,046
Pension Contributions	152,631	9,056	95,719	0	56,913
Social Security Contributions	233,782	13,748	197,627	0	36,155
Health Care Benefits	725,463	64,330	683,917	0	41,546
Life Insurance	19,892	1,605	17,532	0	2,360
Unemployment Compensation	45,000	1,839	22,577	0	22,423
Office Expense	199,615	11,932	155,758	7,220	36,637
Communication	101,250	12,288	81,461	0	19,789
Information Technology	236,000	23,843	181,724	34,685	19,591
Education Training	110,955	2,704	78,360	150	32,445
Vehicle Maint. & Equipment	2,824	(124)	(340)	0	3,164
Commission	22,500	1,823	20,352	730	1,418
Business Insurance	288,282	9,844	183,228	0	105,054
Advertising	60,700	3,239	24,389	3,032	33,279
Professional Services	783,254	(27,590)	665,555	0	117,699
General Contingency	300,000	0	15,825	0	284,175
TOTAL	\$6,338,122	\$355,585	\$5,121,170	\$45,817	\$1,171,135

* Includes Executive, Human Resources, Accounting, EZPass, Purchasing, Information Technology, and Community Affairs.

Delaware River Joint Toll Bridge Commission
Budget vs Actual
For the Eleven Months Ending November 30, 2010

ADMINISTRATION - OPERATIONS*

	Budget 2010	Expended For The Month	Expended Year To Date	Encumbered	Budget Remaining Balance
Regular Employees Salaries	\$1,209,681	\$89,300	\$992,252	\$0	\$217,430
Overtime Wages	0	0	486	0	(486)
Pension Contributions	100,087	5,261	51,961	0	48,126
Social Security Contributions	155,085	9,147	125,961	0	29,123
Health Care Benefits	379,141	39,574	350,636	0	28,505
Life Insurance	13,191	1,097	10,713	0	2,478
Office Expense	27,900	766	8,861	4,420	14,619
Communication	53,349	(18,161)	25,960	0	27,389
Education Training	30,550	969	22,475	0	8,075
Vehicle Maint. & Equipment	9,640	0	0	0	9,640
Operations Maintenance	1,221,400	86,046	889,683	40,820	290,896
Uniform Expense	750	411	703	0	47
Business Insurance	62,479	5,032	51,548	0	10,931
Professional Services	232,000	0	140,801	75,415	15,784
TOTAL	\$3,495,253	\$219,441	\$2,672,040	\$120,655	\$702,557

* Includes Engineering, Security, Safety & Training, Policy and Planning, Plant & Facility, Electronic Security & Surveillance, and Compact Authorized Investment.

Delaware River Joint Toll Bridge Commission
Budget vs Actual
For the Eleven Months Ending November 30, 2010

TRENTON - MORRISVILLE TOLL BRIDGE

	Budget 2010	Expended For The Month	Expended Year To Date	Encumbered	Budget Remaining Balance
Regular Employees Salaries	\$1,534,827	\$124,158	\$1,351,000	\$0	\$183,826
Temporary/Summer Salaries	76,028	2,791	91,918	0	(15,890)
Overtime Wages	28,998	358	32,067	0	(3,069)
Pension Contributions	77,265	4,943	48,823	0	28,442
Social Security Contributions	125,449	9,643	113,778	0	11,671
Health Care Benefits	539,002	49,919	551,630	0	(12,628)
Life Insurance	9,870	867	9,717	0	154
Utility Expense	180,314	2,073	121,274	1,440	57,600
Office Expense	4,350	344	4,668	344	(662)
Communication	94,624	(7,518)	41,382	1,834	51,408
Information Technology	8,385	0	7,890	0	495
Education Training	1,500	0	0	0	1,500
Vehicle Maint. & Equipment	59,800	693	32,920	10,116	16,764
Operations Maintenance	172,294	11,192	113,005	23,769	35,519
Toll Collection	12,500	814	9,105	402	2,993
Uniform Expense	14,250	639	14,140	0	110
Business Insurance	342,034	23,003	256,124	0	85,910
Licenses & Inspections	480	50	240	0	240
State Police Bridge Security	558,655	45,670	490,375	0	68,280
EZPass Equipment/Maintenance	195,081	15,250	164,920	11,254	18,907
EZPass Operating Expense	564,446	73,226	541,032	0	23,414
TOTAL	\$4,600,151	\$358,116	\$3,996,007	\$49,159	\$554,984

Delaware River Joint Toll Bridge Commission
Budget vs Actual
For the Eleven Months Ending November 30, 2010

NEW HOPE - LAMBERTVILLE TOLL BRIDGE

	Budget 2010	Expended For The Month	Expended Year To Date	Encumbered	Budget Remaining Balance
Regular Employees Salaries	\$1,056,310	\$71,603	\$922,292	\$0	\$134,018
Temporary/Summer Salaries	35,971	0	25,758	0	10,213
Overtime Wages	14,580	1,170	32,513	0	(17,933)
Pension Contributions	53,033	3,391	33,494	0	19,539
Social Security Contributions	84,675	5,522	73,956	0	10,719
Health Care Benefits	373,807	27,868	343,048	0	30,759
Life Insurance	6,828	478	5,724	0	1,104
Utility Expense	120,150	4,050	91,890	657	27,604
Office Expense	7,700	225	2,191	105	5,404
Communication	52,220	(8,184)	35,100	0	17,120
Information Technology	9,250	0	6,446	0	2,804
Education Training	1,000	36	36	0	964
Vehicle Maint. & Equipment	70,840	8,817	48,639	3,523	18,678
Operations Maintenance	139,145	9,292	91,065	22,645	25,435
Toll Collection	9,900	40	6,729	386	2,786
Uniform Expense	5,000	442	3,652	1,101	246
Business Insurance	269,531	18,230	207,449	0	62,082
Licenses & Inspections	240	0	135	0	105
State Police Bridge Security	129,763	10,608	113,903	0	15,860
EZPass Equipment/Maintenance	156,065	12,198	131,913	9,000	15,151
EZPass Operating Expense	190,366	24,696	182,469	0	7,896
TOTAL	\$2,786,373	\$190,483	\$2,358,401	\$37,417	\$390,555

Delaware River Joint Toll Bridge Commission
Budget vs Actual
For the Eleven Months Ending November 30, 2010

INTERSTATE - 78 TOLL BRIDGE

	Budget 2010	Expended For The Month	Expended Year To Date	Encumbered	Budget Remaining Balance
Regular Employees Salaries	\$2,204,266	\$176,739	\$1,960,114	\$0	\$244,151
Temporary/Summer Salaries	116,402	4,493	87,338	0	29,064
Overtime Wages	51,228	1,090	37,767	0	13,461
Pension Contributions	111,422	8,573	86,979	0	24,443
Social Security Contributions	181,450	13,803	158,878	0	22,572
Health Care Benefits	805,845	73,769	799,735	0	6,111
Life Insurance	14,184	1,237	13,284	0	900
Utility Expense	128,000	6,841	90,941	5,116	31,944
Office Expense	7,750	280	4,801	274	2,675
Communication	64,470	(8,544)	26,083	0	38,387
Information Technology	3,103	0	2,024	0	1,079
Education Training	1,280	0	1,146	0	134
Vehicle Maint. & Equipment	64,240	5,772	47,864	1,819	14,558
Operations Maintenance	189,275	(7,564)	150,483	14,839	23,953
Toll Collection	10,000	400	7,287	1,960	753
Uniform Expense	9,750	282	8,473	1,008	269
Business Insurance	623,351	41,650	479,645	0	143,706
Licenses & Inspections	408	145	524	0	(116)
State Police Bridge Security	624,800	51,077	548,435	0	76,365
EZPass Equipment/Maintenance	273,113	21,344	230,819	9,000	33,294
EZPass Operating Expense	874,860	113,497	838,569	0	36,291
TOTAL	\$6,359,197	\$504,883	\$5,581,191	\$34,015	\$743,991

Delaware River Joint Toll Bridge Commission
Budget vs Actual
For the Eleven Months Ending November 30, 2010

EASTON - PHILLIPSBURG TOLL BRIDGE

	Budget 2010	Expended For The Month	Expended Year To Date	Encumbered	Budget Remaining Balance
Regular Employees Salaries	\$1,613,604	\$124,749	\$1,432,055	\$0	\$181,549
Temporary/Summer Salaries	129,720	5,171	89,321	0	40,399
Overtime Wages	38,076	1,094	25,465	0	12,611
Pension Contributions	81,656	5,640	55,991	0	25,664
Social Security Contributions	136,277	9,918	118,268	0	18,009
Health Care Benefits	554,470	47,492	546,469	0	8,001
Life Insurance	10,399	928	9,862	0	537
Unemployment Compensation	0	0	318	0	(318)
Utility Expense	117,856	8,142	100,987	0	16,869
Office Expense	7,800	249	5,254	249	2,297
Communication	50,670	(2,075)	31,732	1,280	17,658
Information Technology	3,103	0	2,024	0	1,079
Education Training	2,626	0	1,782	0	844
Vehicle Maint. & Equipment	42,860	306	31,167	2,994	8,699
Operations Maintenance	148,497	6,862	102,804	14,235	31,459
Toll Collection	11,500	1,443	8,706	383	2,410
Uniform Expense	9,000	279	8,978	14	8
Business Insurance	239,310	16,967	188,978	0	50,333
Licenses & Inspections	504	0	261	0	243
State Police Bridge Security	422,151	34,511	370,554	0	51,597
EZPass Equipment/Maintenance	195,081	15,250	164,920	11,254	18,907
EZPass Operating Expense	551,459	71,541	528,584	0	22,875
TOTAL	\$4,366,618	\$348,466	\$3,824,478	\$30,409	\$511,731

Delaware River Joint Toll Bridge Commission
Budget vs Actual
For the Eleven Months Ending November 30, 2010

PORTLAND - COLUMBIA TOLL BRIDGE

	Budget 2010	Expended For The Month	Expended Year To Date	Encumbered	Budget Remaining Balance
Regular Employees Salaries	\$751,023	\$58,365	\$660,311	\$0	\$90,713
Temporary/Summer Salaries	50,580	2,346	40,291	0	10,289
Overtime Wages	22,190	610	12,355	0	9,835
Pension Contributions	34,852	2,933	28,968	0	5,884
Social Security Contributions	63,020	4,654	53,759	0	9,261
Health Care Benefits	240,276	23,554	242,347	0	(2,071)
Life Insurance	4,395	398	4,147	0	247
Utility Expense	70,500	3,594	49,106	6,515	14,879
Office Expense	2,125	149	1,947	105	73
Communication	40,176	(3,454)	25,393	1,989	12,794
Information Technology	3,103	0	2,024	0	1,079
Education Training	900	0	37	0	863
Vehicle Maint. & Equipment	23,230	2,614	17,051	2,852	3,327
Operations Maintenance	85,595	2,794	38,869	22,305	24,421
Toll Collection	5,100	211	2,838	271	1,991
Uniform Expense	3,500	125	2,616	722	162
Business Insurance	153,761	10,394	119,794	0	33,967
Licenses & Inspections	350	0	170	0	180
State Police Bridge Security	81,313	6,647	71,374	0	9,938
EZPass Equipment/Maintenance	117,049	9,146	98,906	6,754	11,389
EZPass Operating Expense	102,944	13,355	98,673	0	4,271
TOTAL	\$1,855,981	\$138,435	\$1,570,975	\$41,514	\$243,492

Delaware River Joint Toll Bridge Commission
Budget vs Actual
For the Eleven Months Ending November 30, 2010

DELAWARE WATER GAP TOLL BRIDGE

	Budget 2010	Expended For The Month	Expended Year To Date	Encumbered	Budget Remaining Balance
Regular Employees Salaries	\$2,330,047	\$191,153	\$2,082,340	\$0	\$247,707
Temporary/Summer Salaries	194,700	13,127	169,721	0	24,979
Overtime Wages	48,195	2,409	21,824	0	26,371
Pension Contributions	115,726	8,078	79,782	0	35,944
Social Security Contributions	196,830	15,702	173,684	0	23,146
Health Care Benefits	816,706	75,633	817,046	0	(341)
Life Insurance	14,764	1,319	14,408	0	356
Utility Expense	100,418	3,614	58,655	18,885	22,877
Office Expense	4,100	517	4,434	213	(547)
Communication	58,416	(8,694)	39,796	1,989	16,631
Information Technology	3,103	0	2,024	0	1,079
Education Training	900	23	284	0	616
Vehicle Maint. & Equipment	51,820	9,479	39,480	2,794	9,546
Operations Maintenance	131,260	4,548	52,517	37,419	41,323
Toll Collection	10,700	565	6,408	3,313	979
Uniform Expense	11,000	109	10,472	477	51
Business Insurance	480,722	32,337	367,937	0	112,785
Licenses & Inspections	160	195	347	0	(187)
State Police Bridge Security	594,466	48,597	521,809	0	72,657
EZPass Equipment/Maintenance	312,129	24,385	263,711	17,986	30,433
EZPass Operating Expense	780,151	101,210	747,790	0	32,361
TOTAL	\$6,256,314	\$524,308	\$5,474,469	\$83,077	\$698,767

Delaware River Joint Toll Bridge Commission
Budget vs Actual
For the Eleven Months Ending November 30, 2010

MILFORD - MONTAGUE TOLL BRIDGE

	Budget 2010	Expended For The Month	Expended Year To Date	Encumbered	Budget Remaining Balance
Regular Employees Salaries	\$752,038	\$61,058	\$724,022	\$0	\$28,016
Temporary/Summer Salaries	49,905	552	25,158	0	24,747
Overtime Wages	24,135	1,211	17,781	0	6,354
Pension Contributions	40,265	2,817	27,821	0	12,444
Social Security Contributions	63,195	4,766	57,849	0	5,346
Health Care Benefits	273,774	23,534	256,876	0	16,898
Life Insurance	5,102	414	4,488	0	614
Utility Expense	57,290	183	44,446	0	12,844
Office Expense	2,600	378	2,174	145	281
Communication	33,160	(4,472)	22,001	1,989	9,170
Information Technology	3,103	0	2,024	0	1,079
Education Training	1,700	40	864	0	836
Vehicle Maint. & Equipment	28,520	786	14,555	6,425	7,539
Operations Maintenance	88,421	3,770	32,267	21,178	34,977
Toll Collection	7,000	222	4,346	311	2,343
Uniform Expense	4,500	1,589	3,264	1,203	33
Business Insurance	112,835	7,797	90,769	0	22,066
Licenses & Inspections	36	65	221	0	(185)
State Police Bridge Security	85,526	6,992	75,072	0	10,453
EZPass Equipment/Maintenance	117,049	9,146	98,906	6,754	11,389
EZPass Operating Expense	103,260	13,396	98,977	0	4,283
TOTAL	\$1,853,413	\$134,243	\$1,603,884	\$38,004	\$211,525

Delaware River Joint Toll Bridge Commission
Budget vs Actual
For the Eleven Months Ending November 30, 2010

SOUTHERN DIVISION TOLL SUPPORTED BRIDGES

	Budget 2010	Expended For The Month	Expended Year To Date	Encumbered	Budget Remaining Balance
Regular Employees Salaries	\$1,896,547	\$140,512	\$1,659,346	\$0	\$237,201
Overtime Wages	42,591	253	40,679	0	1,912
Pension Contributions	96,122	6,239	61,617	0	34,505
Social Security Contributions	148,344	10,667	127,280	0	21,064
Health Care Benefits	731,255	62,112	665,167	0	66,088
Life Insurance	12,271	977	10,567	0	1,704
Utility Expense	70,791	2,992	46,276	1,138	23,377
Office Expense	2,370	0	0	0	2,370
Communication	9,770	389	7,037	0	2,733
Education Training	2,250	0	0	0	2,250
Vehicle Maint. & Equipment	15,870	0	10,066	0	5,804
Operations Maintenance	134,906	9,390	64,763	8,664	61,479
Uniform Expense	15,200	1,428	9,902	5,179	119
Business Insurance	740,599	48,970	555,329	0	185,270
Licenses & Inspections	817	50	638	0	179
State Police Bridge Security	1,306,056	106,770	1,146,426	0	159,630
TOTAL	\$5,225,759	\$390,749	\$4,405,093	\$14,981	\$805,686

Delaware River Joint Toll Bridge Commission
Budget vs Actual
For the Eleven Months Ending November 30, 2010

NORTHERN DIVISION TOLL SUPPORTED BRIDGES

	Budget 2010	Expended For The Month	Expended Year To Date	Encumbered	Budget Remaining Balance
Regular Employees Salaries	\$1,565,043	\$116,519	\$1,386,006	\$0	\$179,036
Overtime Wages	34,812	1,949	28,744	0	6,068
Pension Contributions	79,549	5,200	51,357	0	28,192
Social Security Contributions	122,389	8,980	104,998	0	17,390
Health Care Benefits	604,346	48,763	546,699	0	57,647
Life Insurance	10,103	836	8,921	0	1,182
Unemployment Compensation	0	0	327	0	(327)
Utility Expense	58,927	2,420	36,047	0	22,880
Office Expense	1,000	554	618	0	382
Communication	19,480	(8,570)	6,250	0	13,230
Education Training	1,100	0	100	0	1,000
Vehicle Maint. & Equipment	8,320	0	2,286	1,171	4,863
Operations Maintenance	50,717	260	16,750	1,213	32,753
Uniform Expense	5,800	685	4,184	1,668	(53)
Business Insurance	354,926	23,676	269,809	0	85,117
Licenses & Inspections	600	65	441	0	159
State Police Bridge Security	410,354	33,546	360,200	0	50,155
TOTAL	\$3,327,465	\$234,884	\$2,823,739	\$4,052	\$499,674

DELAWARE RIVER JOINT TOLL BRIDGE COMMISSION SYSTEM STATEMENT OF REVENUE AND EXPENSES FOR THE ELEVEN MONTHS ENDED NOVEMBER 30, 2010

	T-M	NH-L	1-78	E-P	P-C	DWG	M-M	SDTS	NDTS	ADM	TOTAL 2010	% of Revenue	TOTAL 2009	% of Revenue
TOLL REVENUE														
Net Toll Revenue	9,552,505	2,098,520	36,085,396	8,321,675	1,606,197	23,217,805	1,102,979	-	-	-	81,885,077		79,248,346	
EZPass Fee	85,614	21,287	358,736	87,109	14,557	219,331	9,233	-	-	(80,000)	715,867		396,593	
Net Violation Fee Income	153,673	15,715	289,541	130,319	-	113,630	-	-	-	-	702,878		-	
REVENUE FROM TOLL ACTIVITY	\$ 9,791,791	\$ 2,135,522	\$ 36,733,674	\$ 8,439,104	\$ 1,620,754	\$ 23,550,766	\$ 1,112,212	\$ -	\$ -	\$ (80,000)	\$ 83,303,822		\$ 79,644,939	
OPERATING EXPENSE														
Regular Employees Salaries	1,351,000	922,292	1,960,114	1,432,055	660,311	2,082,340	724,022	1,659,346	1,386,006	3,678,653	15,856,138	19.03%	16,103,048	20.22%
Temporary/Summer Salaries	91,918	25,758	87,338	89,321	40,291	169,721	25,158	-	-	10,929	540,435	0.65%	612,005	0.77%
Overtime Wages	32,067	32,513	37,767	25,465	13,355	21,824	17,781	40,679	28,744	641	249,836	0.30%	222,022	0.28%
Pension Contributions	48,823	33,494	86,979	55,991	28,968	79,782	27,821	61,617	61,617	147,679	622,511	0.75%	534,329	0.67%
Social Security Contributions	113,778	73,956	158,878	118,268	53,759	173,684	57,849	127,280	104,998	323,583	1,306,038	1.57%	1,324,700	1.66%
Health Care Benefits	551,630	343,048	799,735	546,469	242,347	817,046	256,876	665,167	546,699	1,034,553	5,803,571	6.97%	5,228,466	6.56%
Life Insurance	9,717	5,724	13,284	9,862	4,147	14,408	4,488	10,567	8,921	28,245	109,362	0.13%	112,541	0.14%
Retiree Benefits	-	-	-	-	-	-	-	-	-	-	-	0.00%	1,969,031	2.47%
Unemployment Compensation	-	-	-	318	-	-	-	-	327	22,577	23,222	0.03%	32,123	0.04%
Utility Expense	121,274	91,890	90,941	100,987	49,106	58,655	44,446	46,276	36,047	-	639,622	0.77%	652,574	0.82%
Office Expense	4,668	2,191	4,801	5,254	1,947	4,434	2,174	-	618	164,619	190,705	0.23%	192,588	0.24%
Communication	41,382	35,100	26,083	31,732	25,393	39,796	22,001	7,037	6,250	107,421	342,195	0.41%	312,173	0.39%
Information Technology	7,890	6,446	2,024	2,024	2,024	2,024	2,024	-	-	181,724	206,180	0.25%	202,410	0.25%
Education Training	-	36	1,146	1,782	37	284	864	-	100	100,835	105,084	0.13%	107,980	0.14%
Vehicle Maint. & Equipment	32,920	48,639	47,864	31,167	17,051	39,480	14,555	10,066	2,286	(340)	243,688	0.29%	222,574	0.28%
Operations Maintenance	113,005	91,065	150,483	102,804	38,869	52,517	32,267	64,763	16,750	889,683	1,552,206	1.86%	934,281	1.17%
Commission	-	-	-	-	-	-	-	-	-	20,352	20,352	0.02%	19,230	0.02%
Toll Collection	9,105	6,729	7,287	8,706	2,838	6,408	4,346	-	-	-	45,419	0.05%	47,125	0.06%
Uniform Expense	14,140	3,652	8,473	8,978	2,616	10,472	3,264	9,902	4,184	703	66,386	0.08%	59,141	0.07%
Business Insurance	256,124	207,449	479,645	188,978	119,794	367,937	90,769	555,329	269,809	234,776	2,770,608	3.33%	2,726,091	3.42%
Licenses & Inspections	240	135	524	261	170	347	221	638	441	-	2,977	0.00%	1,869	0.00%
Advertising	-	-	-	-	-	-	-	-	-	24,389	24,389	0.03%	43,752	0.05%
Professional Services	-	-	-	-	-	-	-	-	-	866,357	866,357	0.97%	942,179	1.18%
State Police Bridge Security	490,375	113,903	548,435	370,554	71,374	521,809	75,072	-	360,200	-	3,698,148	4.44%	3,798,925	4.77%
EZPass Equipment/Maintenance	164,920	131,913	230,819	164,920	98,986	263,711	98,986	-	-	-	1,154,097	1.39%	984,197	1.24%
General Contingency	-	-	-	-	-	-	-	-	-	15,825	15,825	0.02%	1,250	0.00%
EZPass Operating Expense	541,032	182,469	838,569	528,584	98,673	747,790	98,977	-	-	-	3,036,095	3.64%	3,674,256	4.61%
TOTAL OP., MAINT., & ADM	\$ 3,996,007	\$ 2,358,401	\$ 5,581,191	\$ 3,824,478	\$ 1,570,975	\$ 5,474,469	\$ 1,603,884	\$ 4,405,093	\$ 2,823,739	\$ 7,793,209	\$ 39,431,447	47.33%	\$ 41,060,768	51.55%
NET OPERATING REVENUE	\$ 5,795,784	\$ (222,879)	\$ 31,152,483	\$ 4,614,625	\$ 49,779	\$ 18,076,297	\$ (491,672)	\$ (4,405,093)	\$ (2,823,739)	\$ (7,873,209)	\$ 43,872,375	52.67%	\$ 38,584,171	48.45%
OTHER OPERATING INC/EXP														
Other Operating Income	-	-	-	\$	-	-	-	-	-	153,827	153,832	0.18%	162,722	0.20%
TOTAL OTHER OPERATING INC	\$ (879,238)	\$ (521,830)	\$ (1,291,453)	\$ (879,238)	\$ (412,215)	\$ (1,345,488)	\$ (412,215)	\$ (1,098,468)	\$ (879,238)	\$ 7,719,382	\$ 153,832	0.18%	\$ 162,722	0.20%
Administration Allocated Expense	-	-	-	-	-	-	-	-	-	-	-	-	-	-
NET OPERATING INC	\$ 4,916,546	\$ (744,709)	\$ 29,861,030	\$ 3,735,393	\$ (362,436)	\$ 16,730,808	\$ (903,887)	\$ (5,503,561)	\$ (3,702,977)	\$ 15,592,602	\$ 44,026,207	52.85%	\$ 38,746,893	48.65%
NON-OPERATING REV/EXP														
Interest Revenue	-	-	-	-	-	-	-	-	-	-	2,637,021	3.17%	3,189,905	4.01%
Other Non-Operating Revenue	-	-	-	-	-	-	-	-	-	-	-	0.00%	44,722	-0.06%
Emergency Repair	-	-	-	-	-	-	-	-	-	-	-	0.00%	-	0.00%
Interest Expense	-	-	-	-	-	-	-	-	-	-	(19,082,015)	-22.91%	(20,176,199)	-25.33%
Depreciation Expense	-	-	-	-	-	-	-	-	-	-	(8,169,610)	-9.81%	(10,891,852)	-13.68%
OPEB Amort Expense	-	-	-	-	-	-	-	-	-	-	-	0.00%	-	0.00%
TOTAL NON-OPERATING REV/EXP	\$ -	\$ -	\$ -	\$ -	\$ -	\$ -	\$ -	\$ -	\$ -	\$ (24,614,605)	\$ (24,614,605)	29.55%	\$ (27,833,424)	34.95%
CHANGE IN NET ASSETS														
											\$ 19,411,602	23.30%	\$ 10,913,468	13.70%

* Retiree Benefit was reimbursed through OPEB Trust Fund and no longer classified as an operating expense since January 2010.

12/02/2010 3:40 pm

DELAWARE RIVER JOINT TOLL BRIDGE COMMISSION

Meeting of December 20, 2010

SUBJECT	DESCRIPTION	PAGE NUMBER
Purchasing	Monthly Purchasing Report Covering the Month of November 2010	1 - 4
Purchasing	Supplemental Monthly Purchase Report Lessors, Maintenance and Service Contracts Expiring Between January 2011 and March 2011	5 - 6

DELAWARE RIVER JOINT TOLL BRIDGE COMMISSION

Meeting of December 20, 2010

MONTHLY PURCHASING REPORT

November 2010

This report itemizes all orders for purchases made for the month of November 2010, showing the divisions chargeable for the expense and the source of authority for issuance of the purchase order. This authority is broken into three categories:

- (1) By authority of the Commission
- (2) By authority of the Executive Director or his designate
- (3) By authority of the Superintendent

The purchasing activities for the month culminated in the preparation and placement of 59 purchase orders. To secure competitive prices on items being purchased, 89 price inquiries were sent out for 48 of the requisitions leading to purchase orders, an average of 1.86 per order (89÷48). Significant procurements for the period are highlighted below:

- Three Purchase Orders were let, in the amount of \$30,632.80, at the request of IT for hardware and software.
- A Purchase Order was let, in the amount of \$8,185.00, for attenuator repairs at the I78 ORT. Third-party insurance reimbursement has been received.
- A Purchase Order in the amount of \$6,580.00 was issued for the removal of radio antennas on the Fox Gap Tower in Northampton County. These devices are no longer needed with our new radio system. As a result, the tower lease costs to the Commission will decrease.

In addition to the practices employed incidental to purchase of materials, etc., from vendors on a direct basis, the Commission also purchases via direct utilization of the purchasing processes of the State of New Jersey, the Commonwealth of Pennsylvania and other joint purchasing arrangements.

* * *

DELAWARE RIVER JOINT TOLL BRIDGE COMMISSION
REPORT OF PURCHASING ACTIVITIES
November 2010

PO Number	Vendor Name	General Description	Req Dept	Contract/Resolution/ Comment	Commission	Director	Dist. Supt.
** BY AUTHORITY OF **							
20100527	CAMDEN BAG & PAPER CO.	PAPER AND PLASTIC PRODUCTS	DWG		2,569.02		
20100528	CAMDEN BAG & PAPER CO.	JANITORIAL SUPPLIES-GENERAL	DWG		848.02		
20100529	WORLD OF WIPERS.COM	WIPING RAGS	DWG		111.25		
20100530	CAMDEN BAG & PAPER CO.	PAPER AND PLASTIC PRODUCTS	EP		2,055.97		
20100531	LEHIGH VALLEY JNTRL SUPPLY CO	PAPER AND PLASTIC PRODUCTS	EP		614.37		
20100532	PHILIP ROSENAU CO	PAPER AND PLASTIC PRODUCTS	EP		657.32		
20100533	DELL MARKETING LP	VIRTUAL SERVER MEMORY UPGRADES	IT	PA COSTARS 3	4,031.84		
20100534	CAMDEN BAG & PAPER CO.	PAPER TOWELS	NHL		424.32		
20100535	DELL MARKETING LP	MICE AND KEYBOARD INVENTORY	IT	PA COSTARS 3	590.00		
20100536	DELL MARKETING LP	WINDOWS 7 LICENSES	IT	PA COSTARS 6	9,081.00		
20100537	GOVCONNECTION, INC.	IT BACKUP TAPES	IT		1,720.50		
20100538	SOFTMART GOVERNMENT SERVICES	TONER/FLASH CARDS/MICE	IT		2,180.84		
20100539	SUNBURY MOTORS	AUTOMOTIVE PARTS	DWG		535.30		
20100540	STARR UNIFORM	CLOTHING: TOLL COLLECTOR	DWG	PUR 1313-06-07	569.00		
20100541	LANDSMAN UNIFORMS, INC.	CLOTHING: MAINTENANCE	DWG	PUR 1315-06-07	1,440.00		
20100542	SERVICE TIRE TRUCK CTRS	PATROL VEHICLE TIRES	MM		883.36		
20100543	H. WINTER & CO.	FLOOR TILES & ADHESIVE	MM		615.48		
20100544	CLARIDGE PRODUCTS & EQUIPMENT, INC. CAPITAL RESERVE	DISPLAY CASES FOR NH FACILITY	NHL	FIN 1932-01-10	4,564.38		
20100545	TYLER TECHNOLOGIES	TYLER CRYSTAL REPORT TRAINING	IT		150.00		
20100546	FROMM ELECTRIC SUPPLYING SOLUTIONS	COMBO AC/HEATER REPLACEMENT	DWG		766.25		
20100547	HAZLETON OIL & ENVIRON., INC.	PUMP & DISPOSAL OF TANK SLUDGE	MM		1,098.00		

DELAWARE RIVER JOINT TOLL BRIDGE COMMISSION
REPORT OF PURCHASING ACTIVITIES
November 2010

PO Number	Vendor Name	General Description	Req Dept	Contract/Resolution/ Comment	Commission	Director	Dist. Supt.
** BY AUTHORITY OF **							
20100548	WHITE BIRCH ENVIRONMENTAL INC	HAZARDOUS WASTE DISPOSAL	EP			491.00	
20100549	GRAINGER	SINK FOR TOLL KITCHEN	MM			318.38	
20100550	MARSHALL'S CREEK CARQUEST	GREASE PUMP (HEAVY DUTY)	MM			889.00	
20100551	JW SCOTT	FUEL PUMP HOSE	NHL			167.50	
20100552	NEW HOPE CRUSHED STONE	CRUSHED STONE	NHL			156.70	
20100553	SAFETY- KLEEN SYSTEMS, INC.	PARTS CLEANER	NHL			192.16	
20100554	THE PENN CITY ELEVATOR CO INC	ROUTINE ELEVATOR MAINTENANCE	NHL			151.77	
20100555	COMMUNICATION EQUIPMENT SPEC. CAPITAL RESERVE	LIGHT BAR INSTALLATIONS-3	NHL	FIN 1932-01-10	936.00		
20100556	CORE MECHANICAL, INC.	AIR CONDITIONER REPAIRS	NHL	NJ T1372		835.00	
20100557	CORE MECHANICAL, INC.	AIRCONDITIONER REPAIRS	NHL	NJ T1372		480.78	
20100558	PISCOPO BROS. GARAGE	REPAIRS TO PATROL VAN	TM			949.95	
20100559	CRESTON HYDRAULICS INC. CAPITAL RESERVE	SNOW PLOW	TM	FIN 1932-01-10	4,190.00		
20100560	PISCOPO BROS. GARAGE	REPAIR PATROL VAN	TM			854.54	
20100561	CONTROL PAPERS COMPANY	TOLL COLLECTION SUPPLIES	I78			1,519.80	
20100562	U.S. MUNICIPAL SUPPLY CO INC	SNOW PLOW PARTS	NHL			526.16	
20100563	BACK THRU THE FUTURE RECYCLING	COMPUTER EQUIPMENT RECYCLING	IT			1,371.00	
20100564	KISTLER O'BREIN	IT ROOM FIRE SYS INSPECTION	NHL			380.00	
20100565	STARR UNIFORM	CLOTHING: OFFICER	TM	PUR 1313-06-07	367.20		
20100566	MARIDO SERVICES, INC.	FILTERS FOR HVAC	DWG			190.00	
20100567	CORE MECHANICAL, INC.	HVAC MAINTENANCE	TM	NJ 2013		877.25	
20100568	LANDSMAN UNIFORMS, INC.	CLOTHING: MAINTENANCE	I78	PUR 1315-06-07	1,007.96		

**DELAWARE RIVER JOINT TOLL BRIDGE COMMISSION
REPORT OF PURCHASING ACTIVITIES**

November 2010

PO Number	Vendor Name	General Description	Req Dept	Contract/Resolution/ Comment	** BY AUTHORITY OF **		
					Commission	Director	Dist. Supt.
20100569	MERSON CONCRETE PROD., INC.	PRE CAST CONCRETE BLOCKS	TM			645.00	
20100570	BROWN-DAUB CHRYSLER/JEEP	REPAIRS TO '07 DODGE DURANGO	I78			495.00	
20100571	LANDSMAN UNIFORMS, INC.	CLOTHING: MAINTENANCE	EP	PUR 1315-06-07	1,357.94		
20100572	STARR UNIFORM	CLOTHING: TOLL COLLECTOR	EP	PUR 1313-06-07	310.24		
20100573	REED & PERRINE SALES INC.	LANDSCAPING MATERIALS	NHL			3,117.00	
20100574	S & S IND EQUIPMENT SUPPLY CO	TRAILER EQUIPMENT TIESDOWNS	NHL			714.54	
20100575	GRAINGER	AUTOMOTIVE ACCESSORIES	EP			409.11	
20100576	BRIDGETON PLUMBING SUPPLY CO.	SEWAGE PUMP STATION CUTTERS	I78			1,544.00	
20100577	GRAYBAR ELECTRIC	ACCESS INTERCOMS/CCTV MONITORS	ESS			838.00	
20100578	DELL MARKETING LP	DELL LAPTOPS	IT	PA COSTARS 3		5,393.16	
20100579	DELL MARKETING LP	DESKTOP COMPUTERS	IT	PA COSTARS 3		16,158.64	
20100580	MOTOROLA INC. CAPITAL RESERVE	REMOVAL OF TOWER ANTENNAS	ESS	NJ 53804	6,580.00		
20100581	TOTALFUNDS BY HASLER	POSTAGE TM	EO			2,000.00	
20100582	GOVCONNECTION, INC.	PRINTER SUPPLIES	ENG			1,335.04	
20100583	GRAINGER	GAS ENGINE HOPPER SPREADER	TM			765.00	
20100584	FRANK CONNELL ASSOCIATES	BANKING ROOM CURRENCY COUNTER	DWG			2,800.00	
20100585	COLLINSON, INC.	GUIDERAIL REPAIR AT ORT ENTRY	I78			8,185.00	
Purchase Order Count: 59							
AUTHORITY TOTALS:					\$21,322.72	\$83,683.32	\$0.00
GRAND TOTAL:					\$ 105,006.04		

DELAWARE RIVER JOINT TOLL BRIDGE COMMISSION

Meeting of December 20, 2010

**SUPPLEMENTAL MONTHLY PURCHASING REPORT
LESSORS, MAINTENANCE AND SERVICE CONTRACTS
EXPIRING BETWEEN JANUARY 2011 AND MARCH 2011**

As requested by Commission Members at the August 31, 1998 meeting, reproduced hereunder are all lessors, maintenance and service contracts that will expire within a four-month period, from January 2011 through March 2011.

A compendium of existing lessors, maintenance and service contracts has been transmitted to all Commission Members under separate cover.

ACTION RECOMMENDED

Adopt a Resolution authorizing receipt and filing of the report.
